

Deer and Elk Monitoring

Anis Aoude and Kyle Garrison
Game Division, Wildlife Program



Outline

- Management Criteria
- Geographic Distribution
- Monitoring Methods
- Trend Data



Elk Management Criteria

Criteria	Class of Elk Targeted by Season Change	Consider Liberalizing Season	Acceptable Range	Consider Restricting Season
Pre-hunt Bull:Cow Ratio	Antlered & Antlerless	Greater than 35 bulls:100 cows	15 to 35 bulls:100 cows	Less than 15 bulls:100 cows
Post-hunt Bull:Cow Ratio	Antlered & Antlerless	Greater than 20 bulls:100 cows	12 to 20 bulls:100 cows	Less than 12 bulls:100 cows
Estimated Bull Mortality	Antlered	Less than 40 %	Less than or equal to 50 %	Greater than 50 %
Percent 6-Point or Better Branch-Antlered Bulls In the Post-hunt Bull Sub-Population	Antlered	Greater than 10 %	2 to 10 %	Less than 2 %
Population Objective	Antlerless	Above Objective	At Objective	Below Objective



Deer Management Criteria

Level of Hunting Pressure	Post-season Buck Ratios
Liberal	15 to 19 bucks:100 does
Moderate	20 to 25 bucks:100 does
Conservative	25+ bucks:100 does

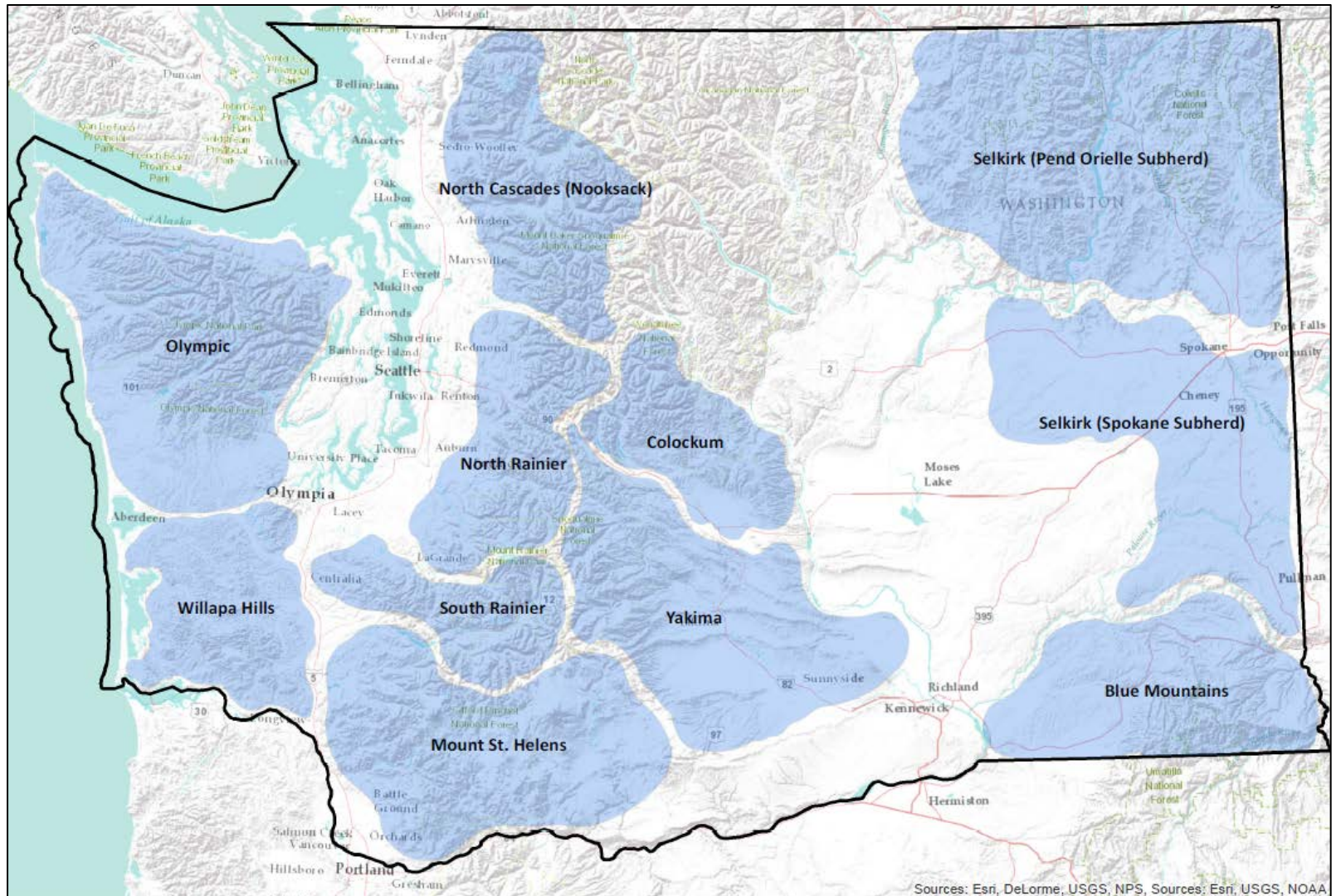




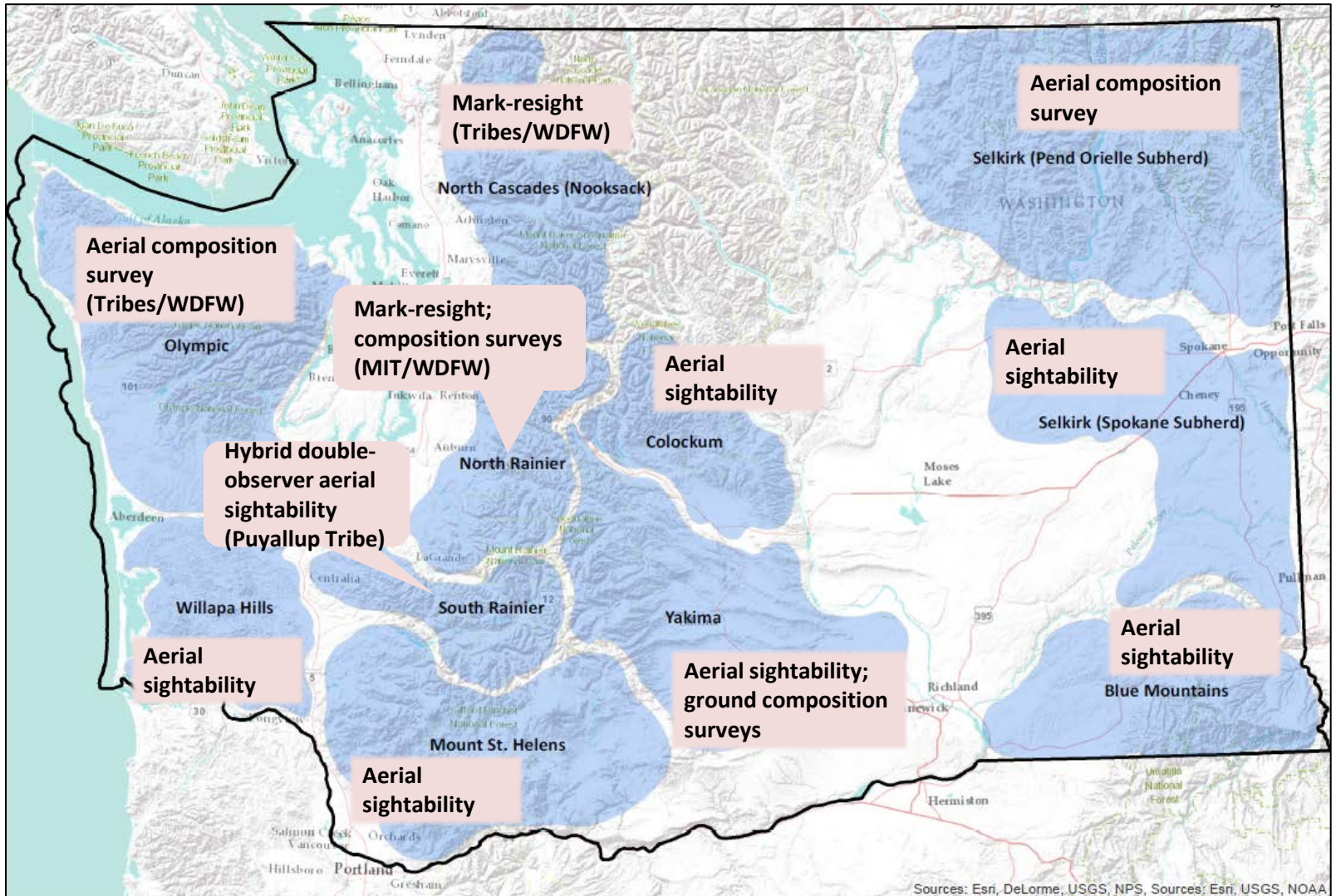
Elk



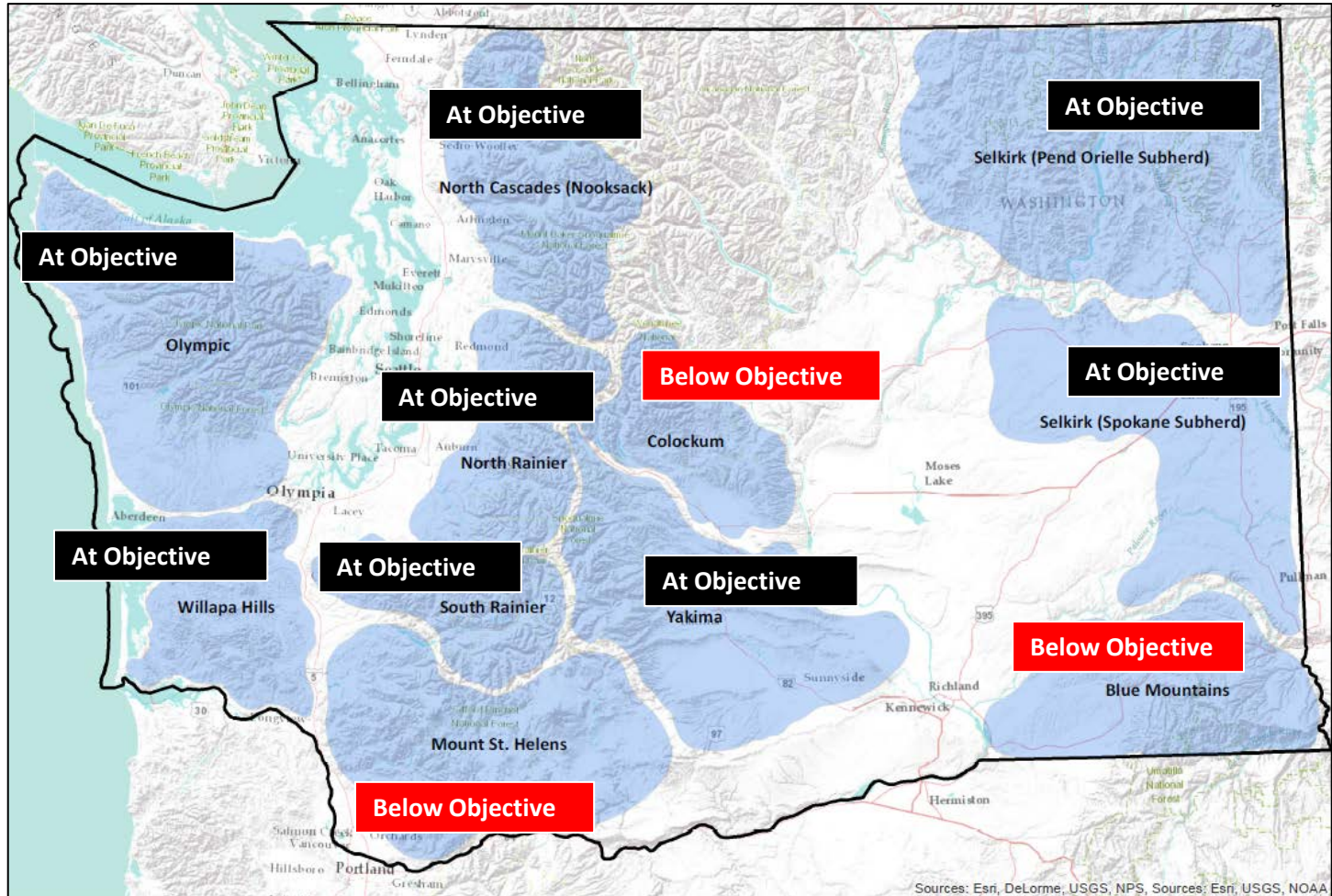
Elk



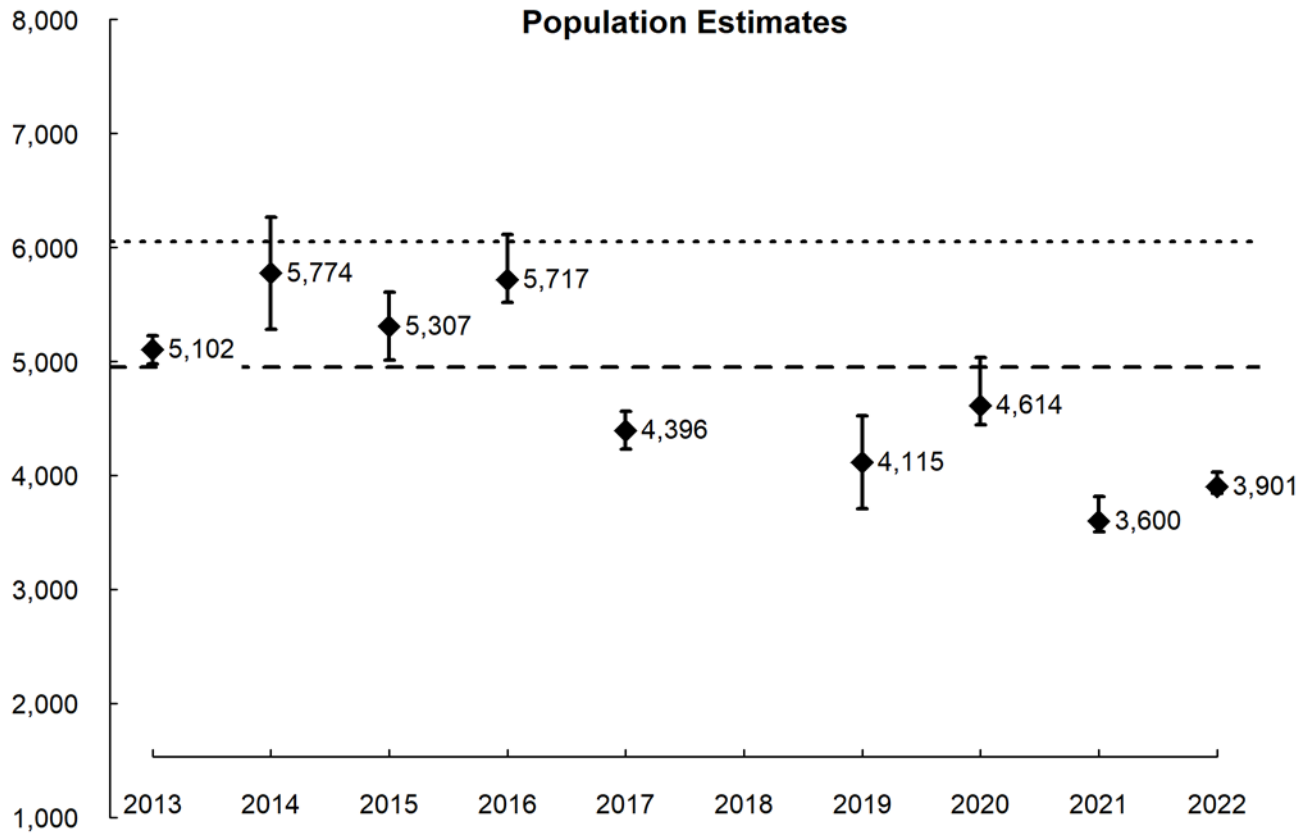
Elk



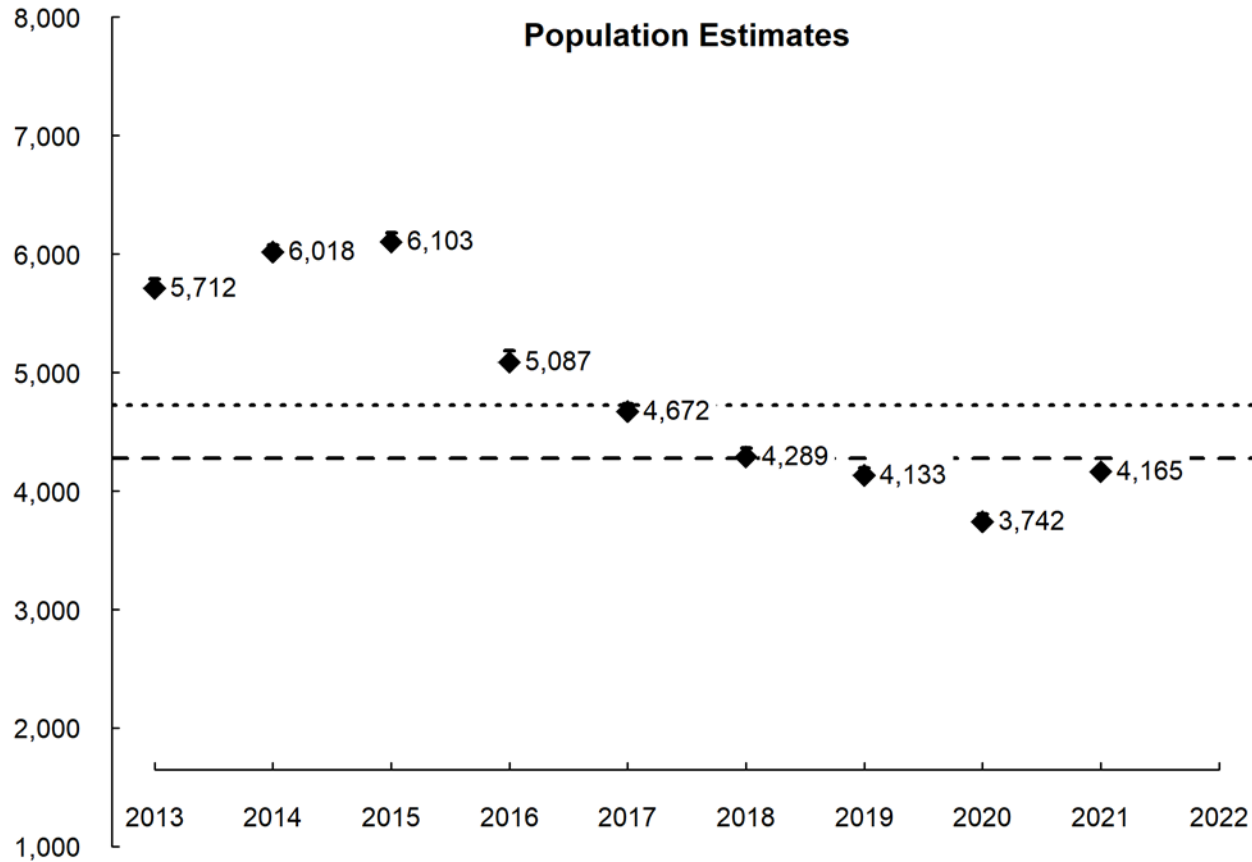
Elk Population Status



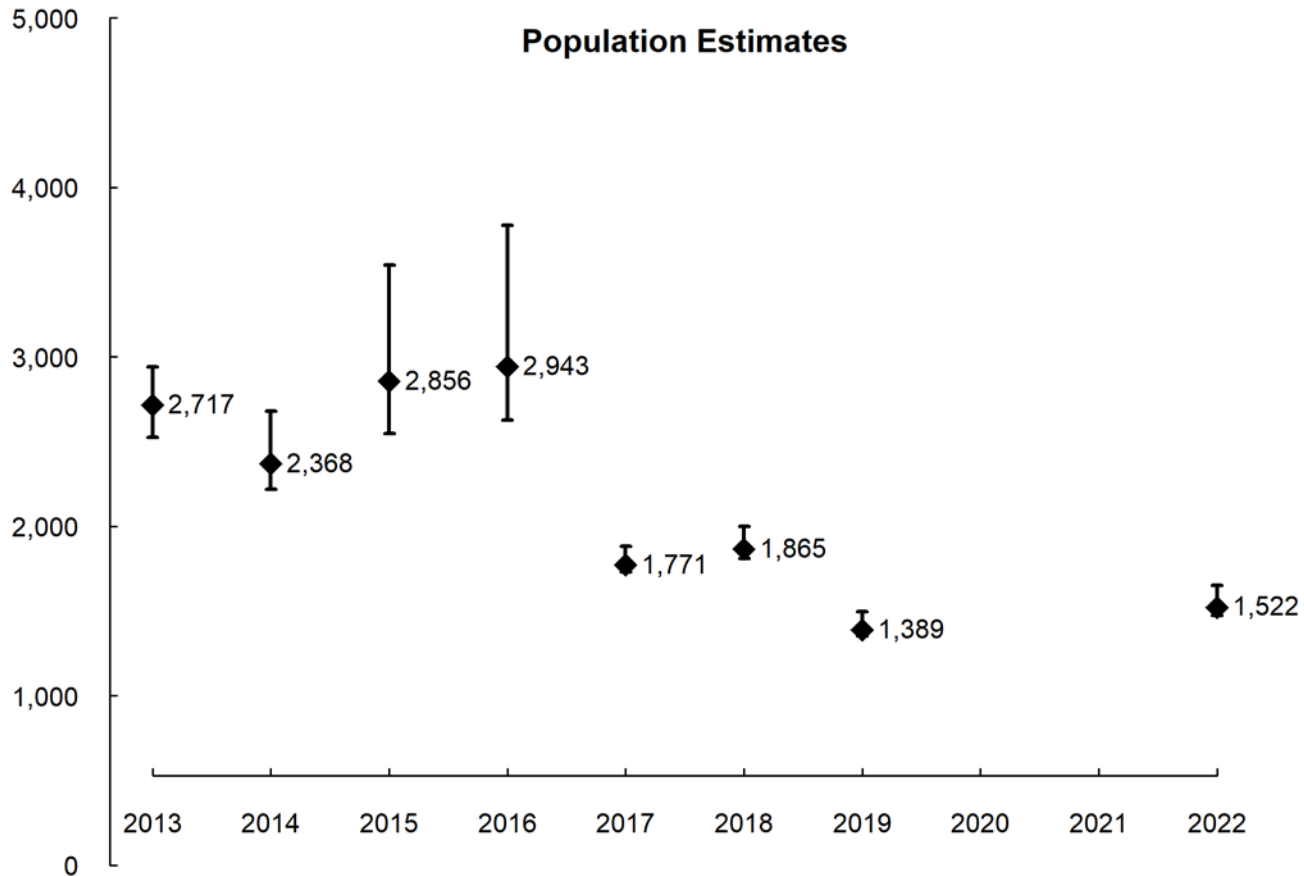
Blue Mountains Elk



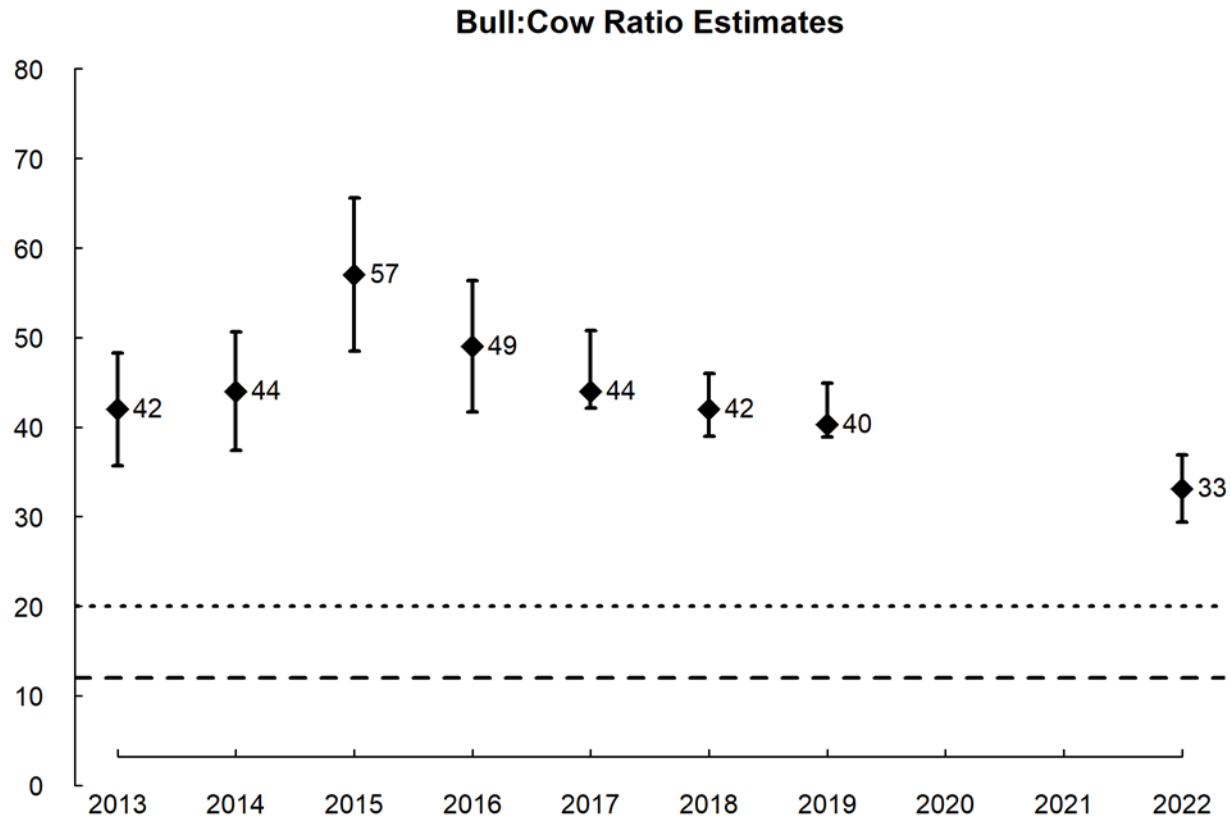
Colockum elk



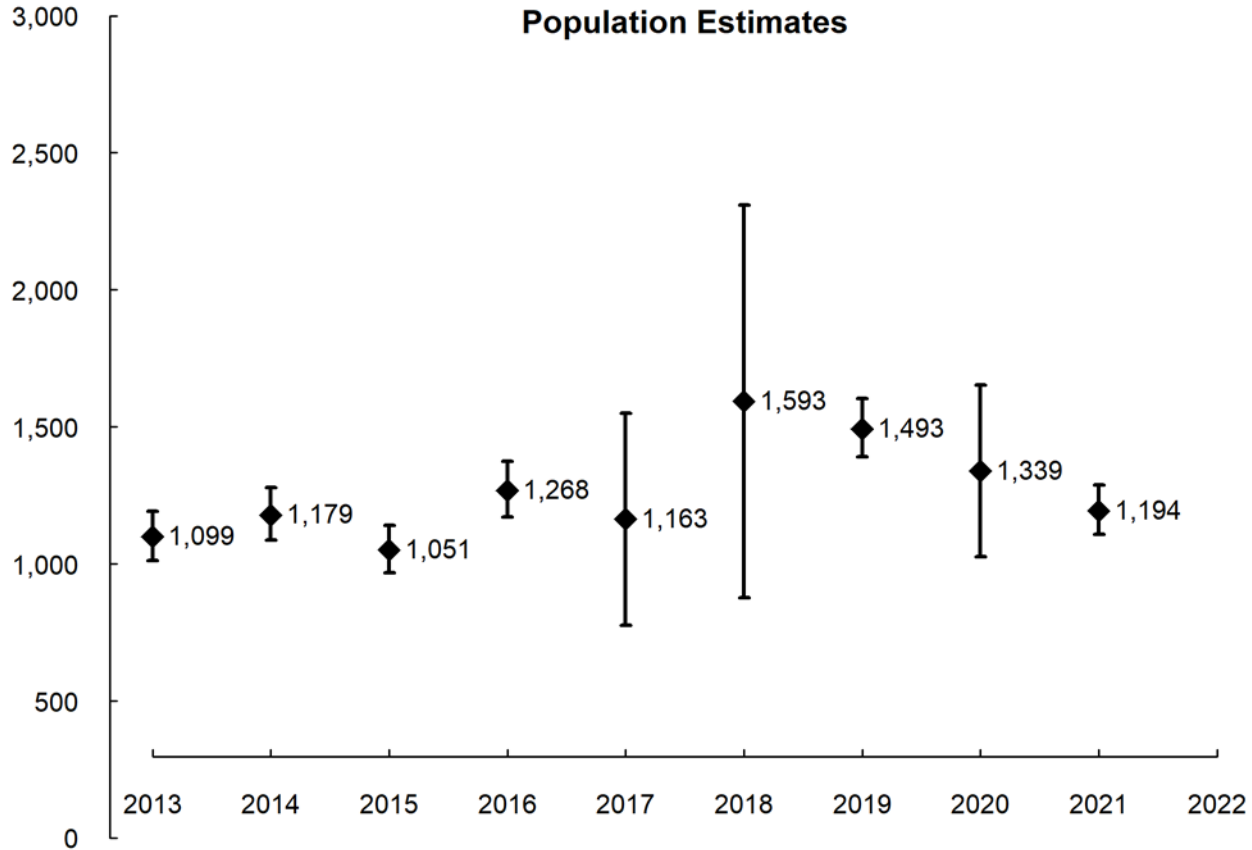
Mount St. Helens Elk



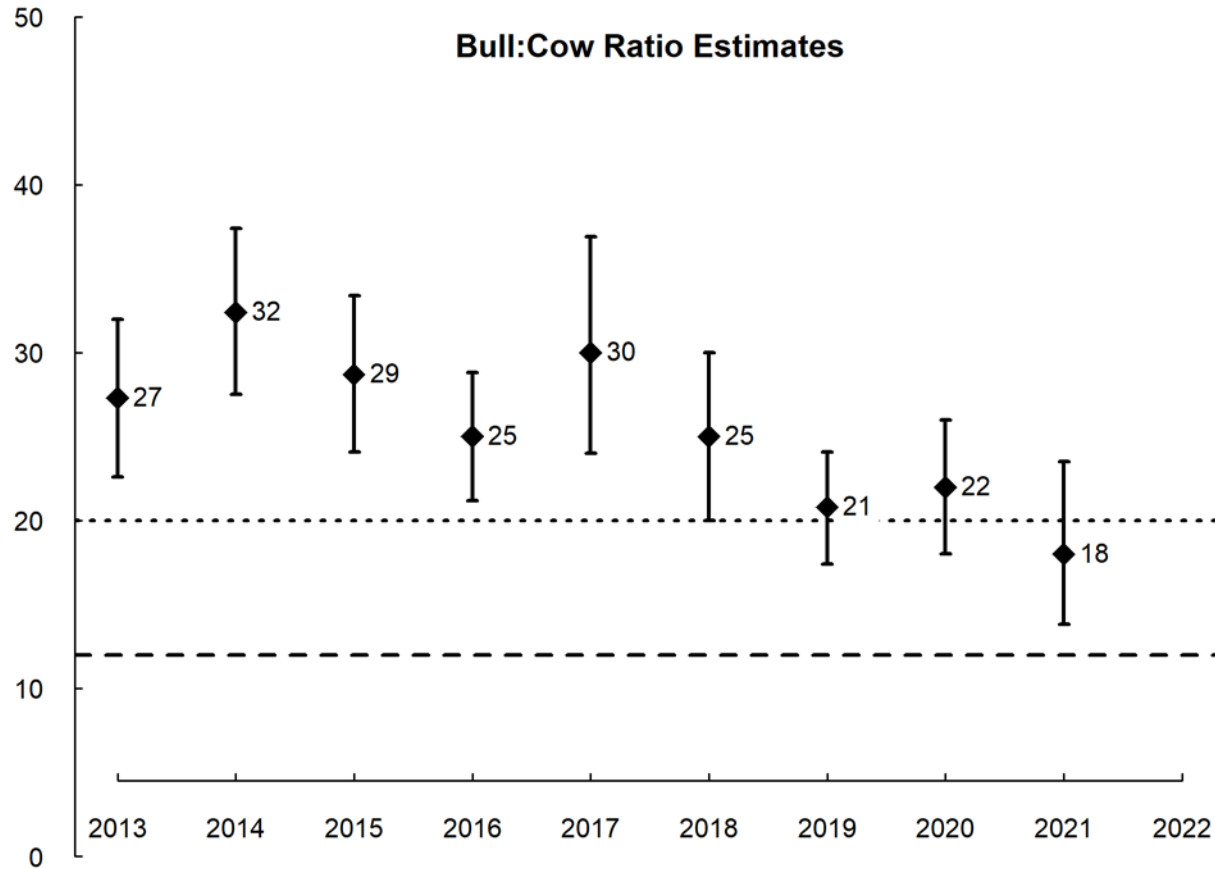
Mount St. Helens Elk



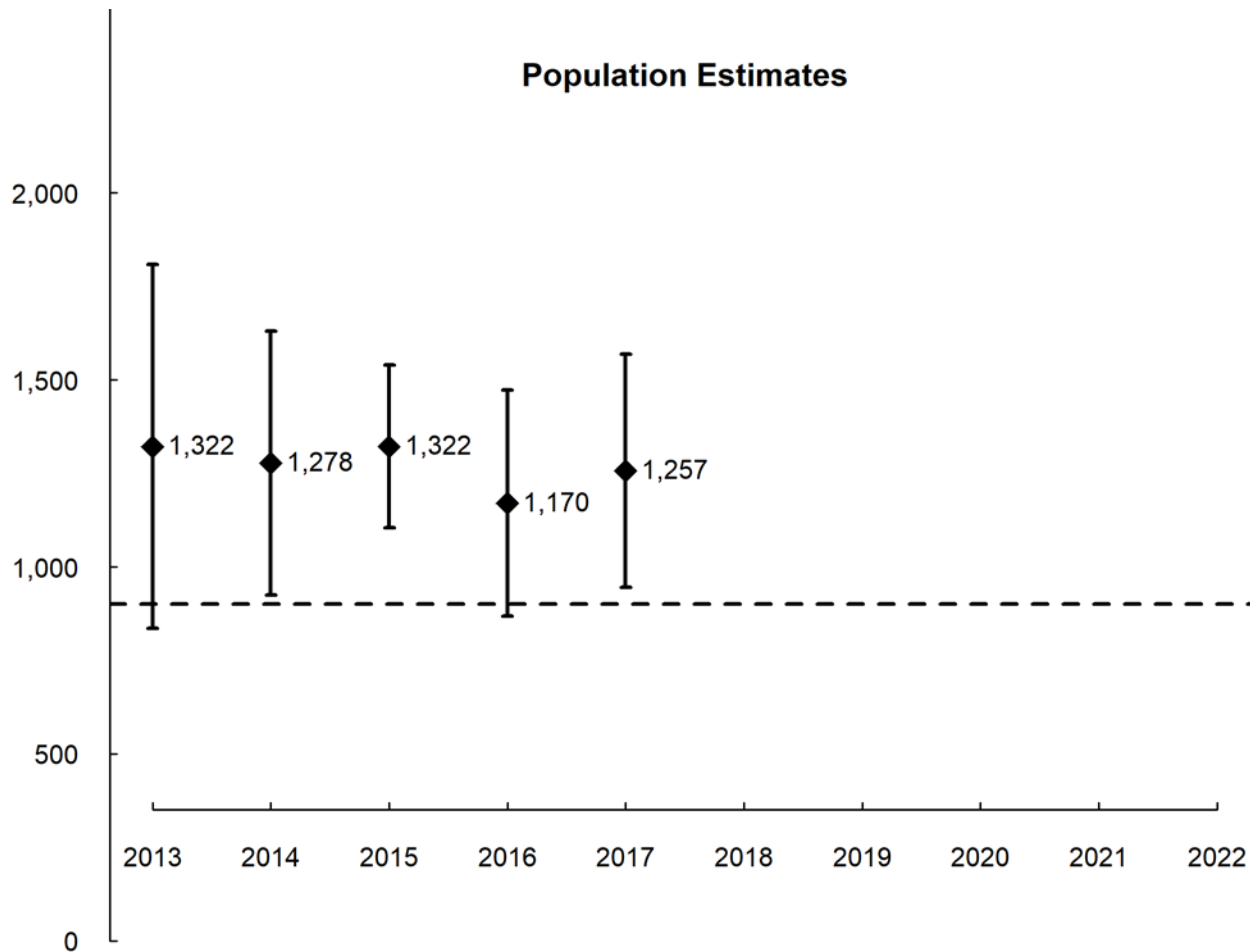
North Cascade Elk



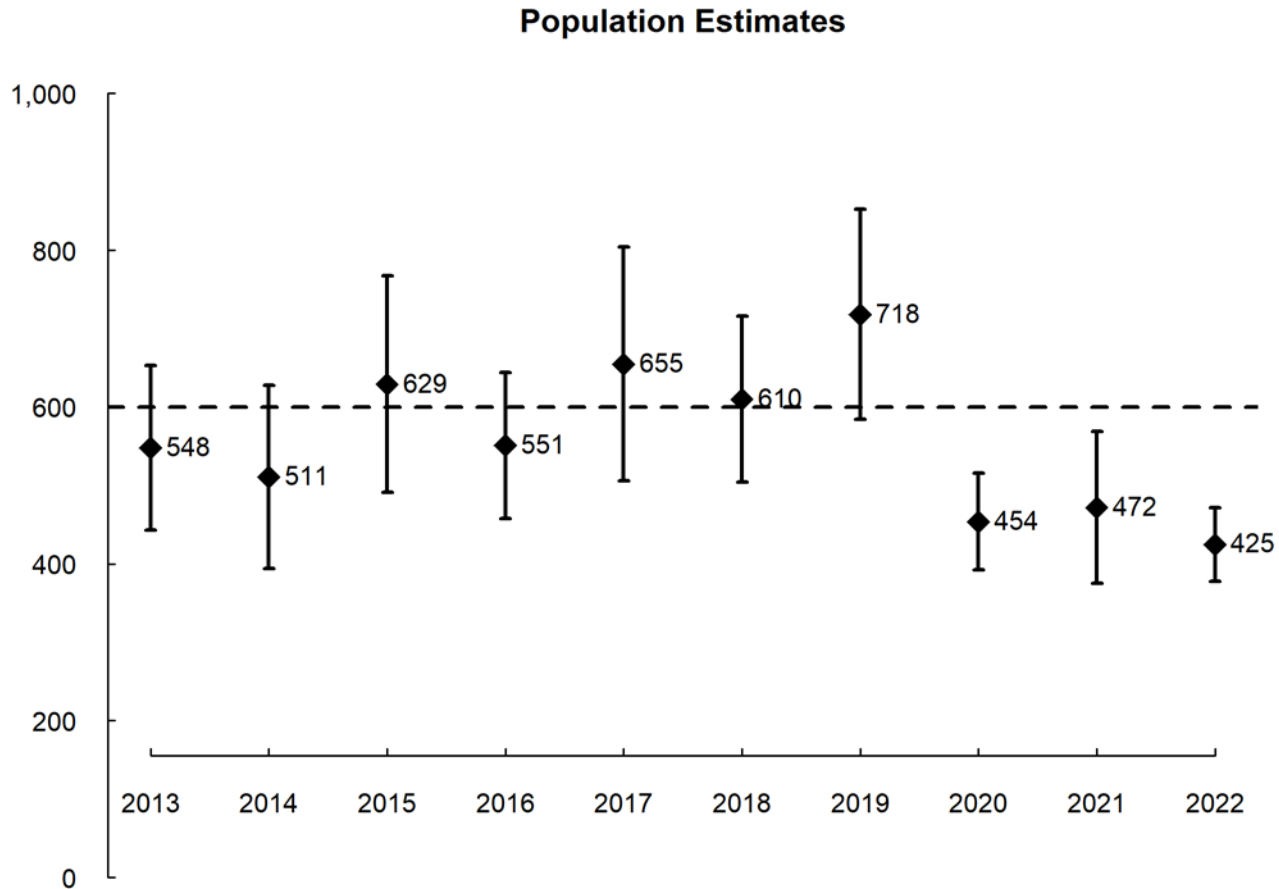
North Cascade Elk



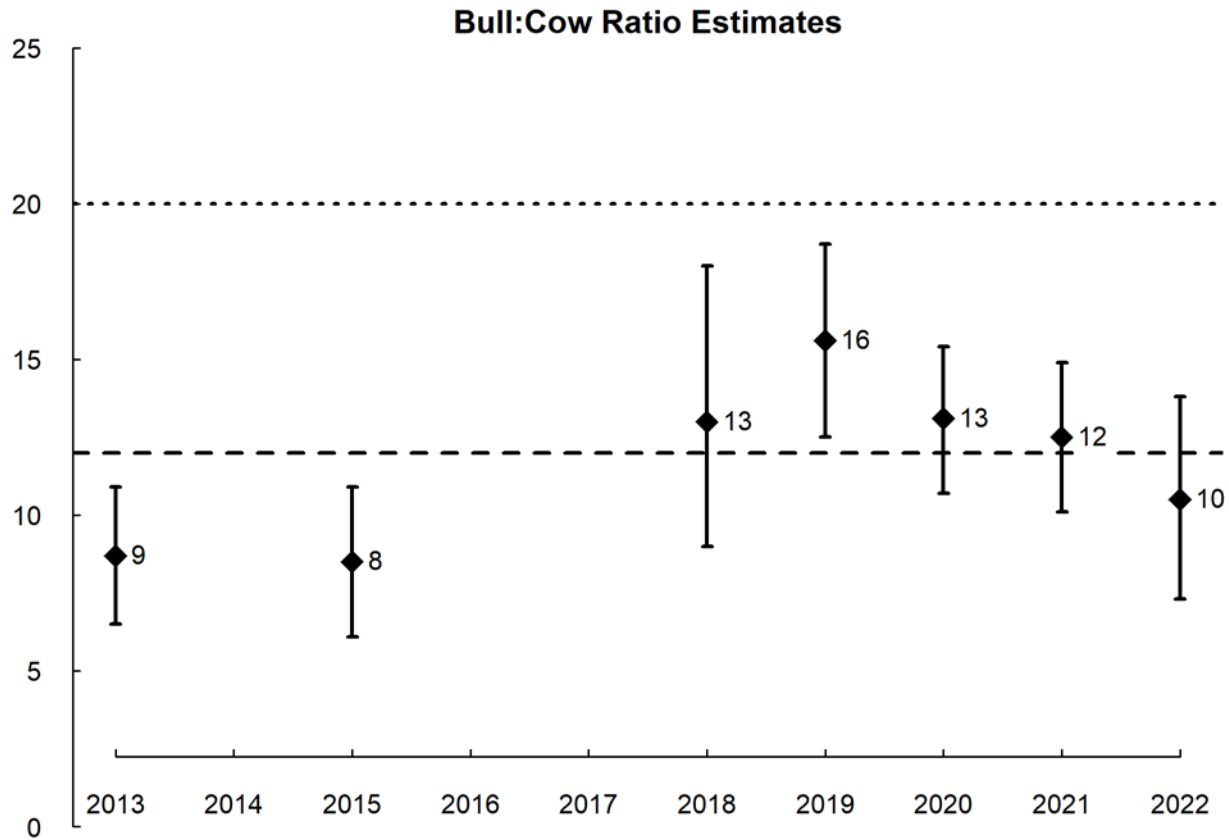
North Rainier Elk GMU 653 MIT



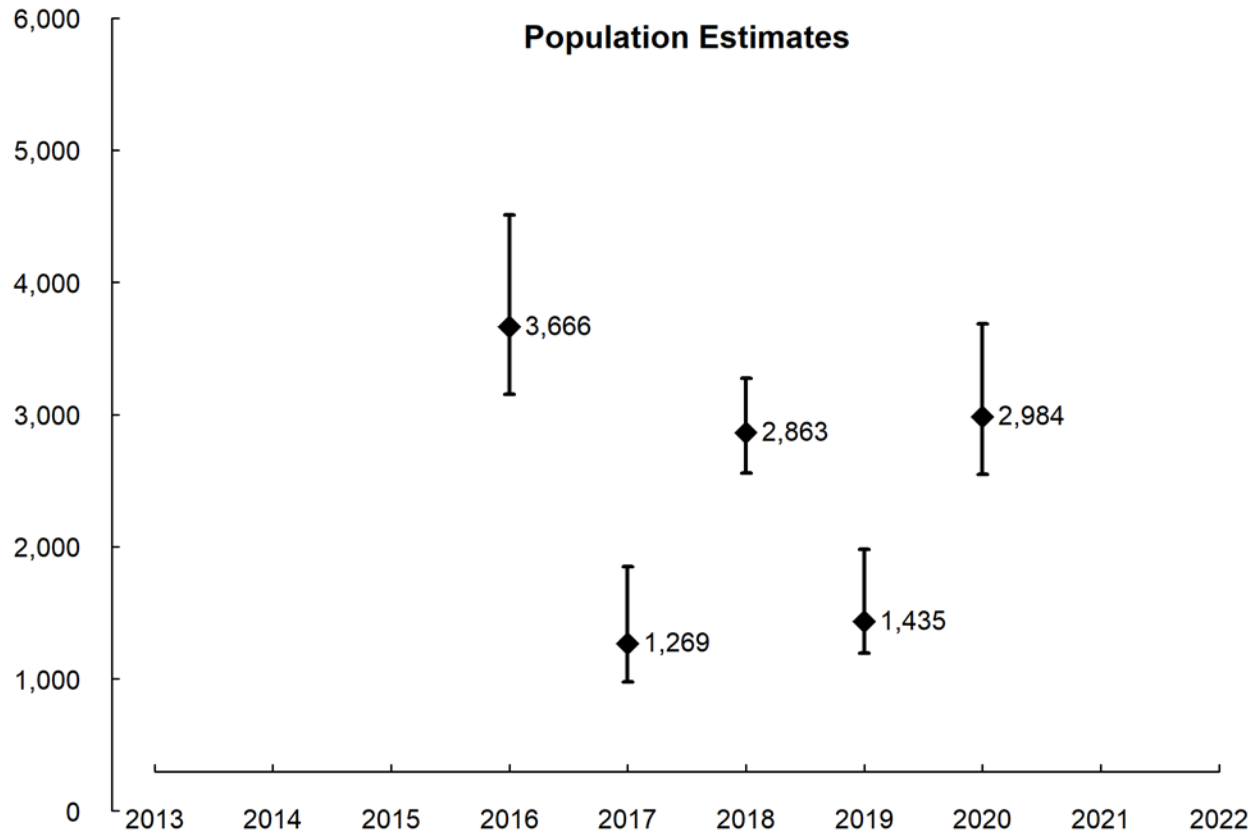
North Rainier Elk GMU 485 MIT



Olympic Elk

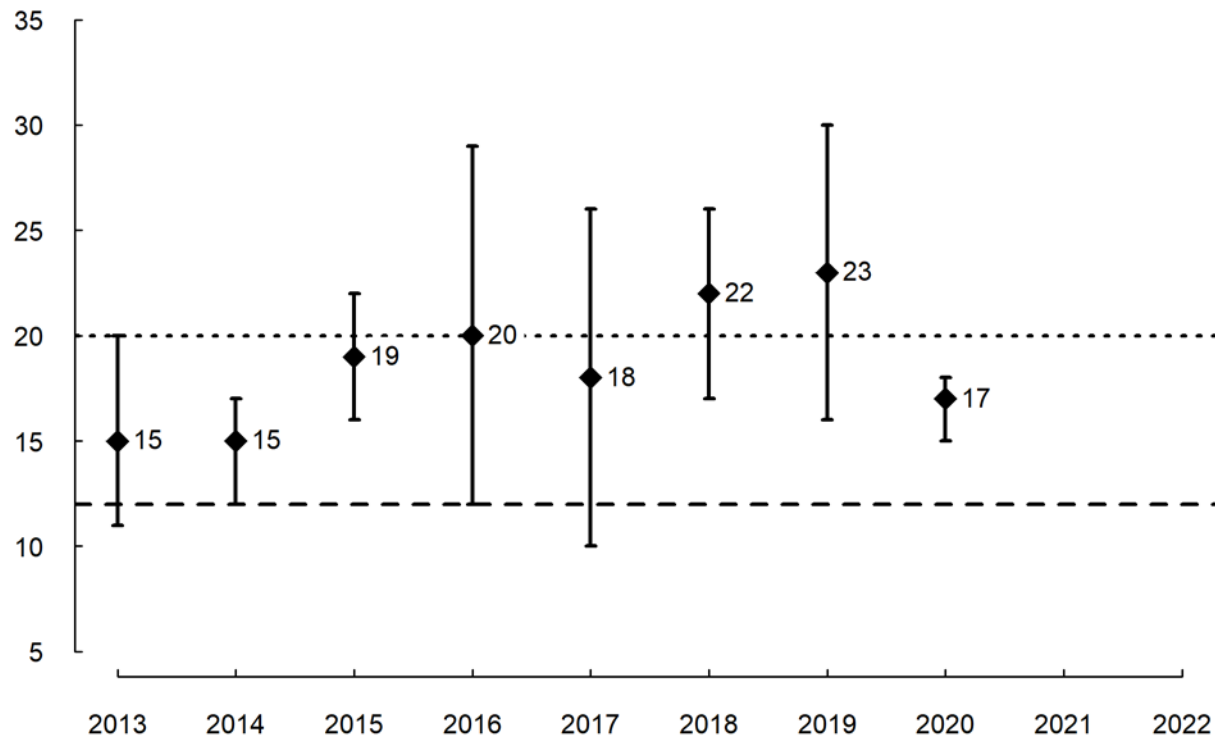


Willapa Elk

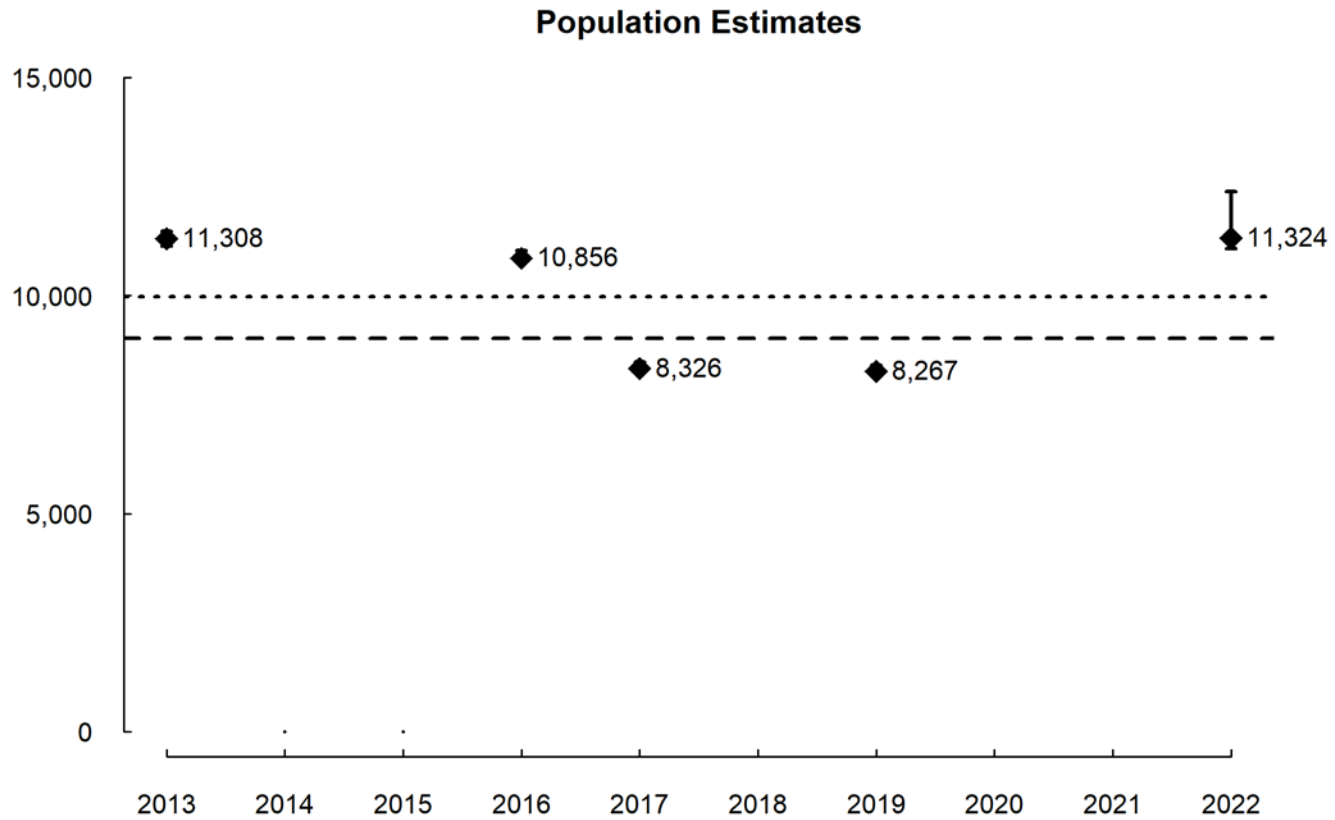


Willapa Elk

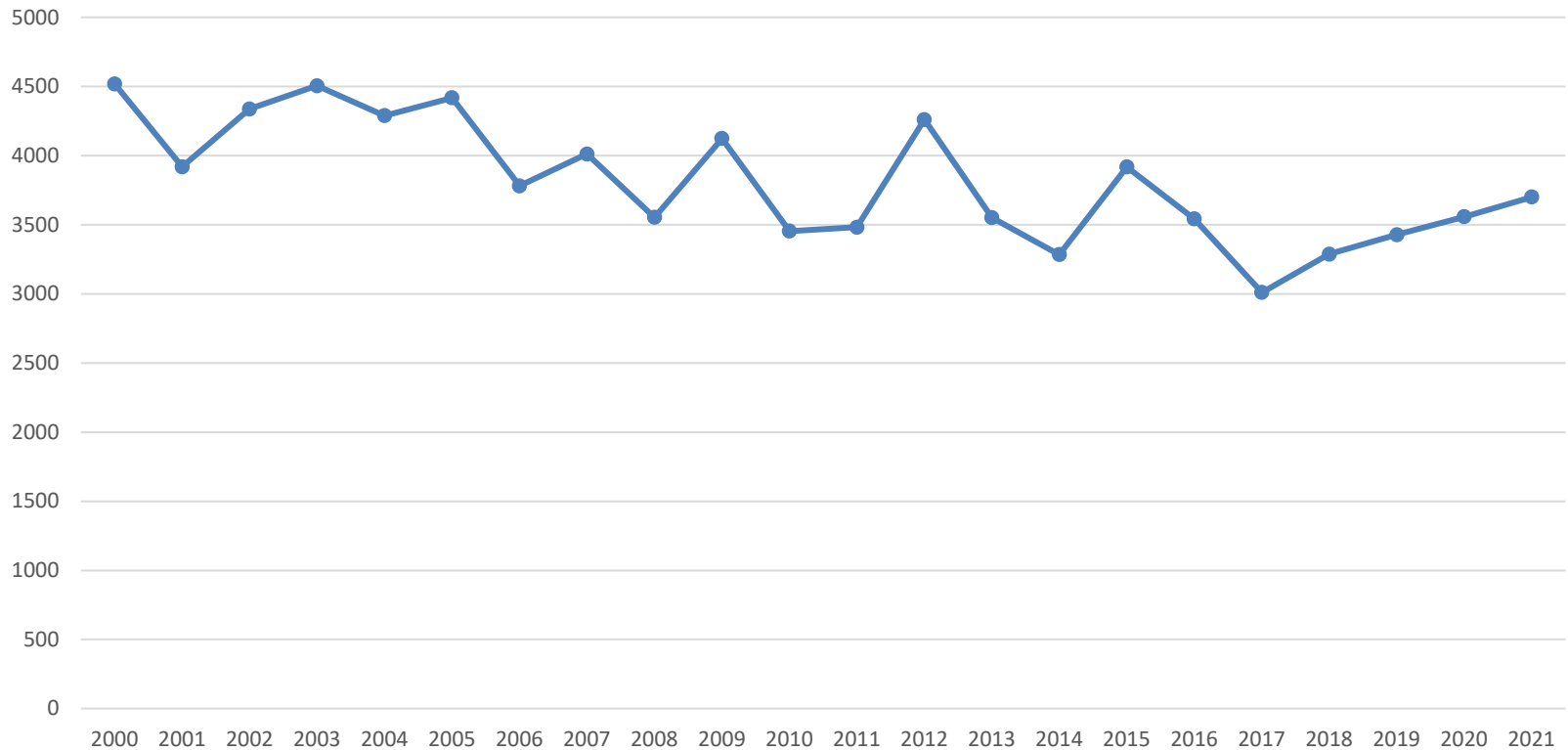
Bull:Cow Ratio Estimates



Yakima Elk



Statewide Bull Elk Harvest Trends



How Do We Compare

State	Elk Pop	People Per Square Mile	People Per Elk	Hunters Per Elk
Colorado	290,000	55	20	1
Montana	150,000	7	7	2
Oregon	133,000	43	32	2
Idaho	120,000	21	15	2
Wyoming	112,900	6	5	1
Utah	80,000	38	40	3
Washington	60,000	107	127	3
California	13,500	241	2927	21

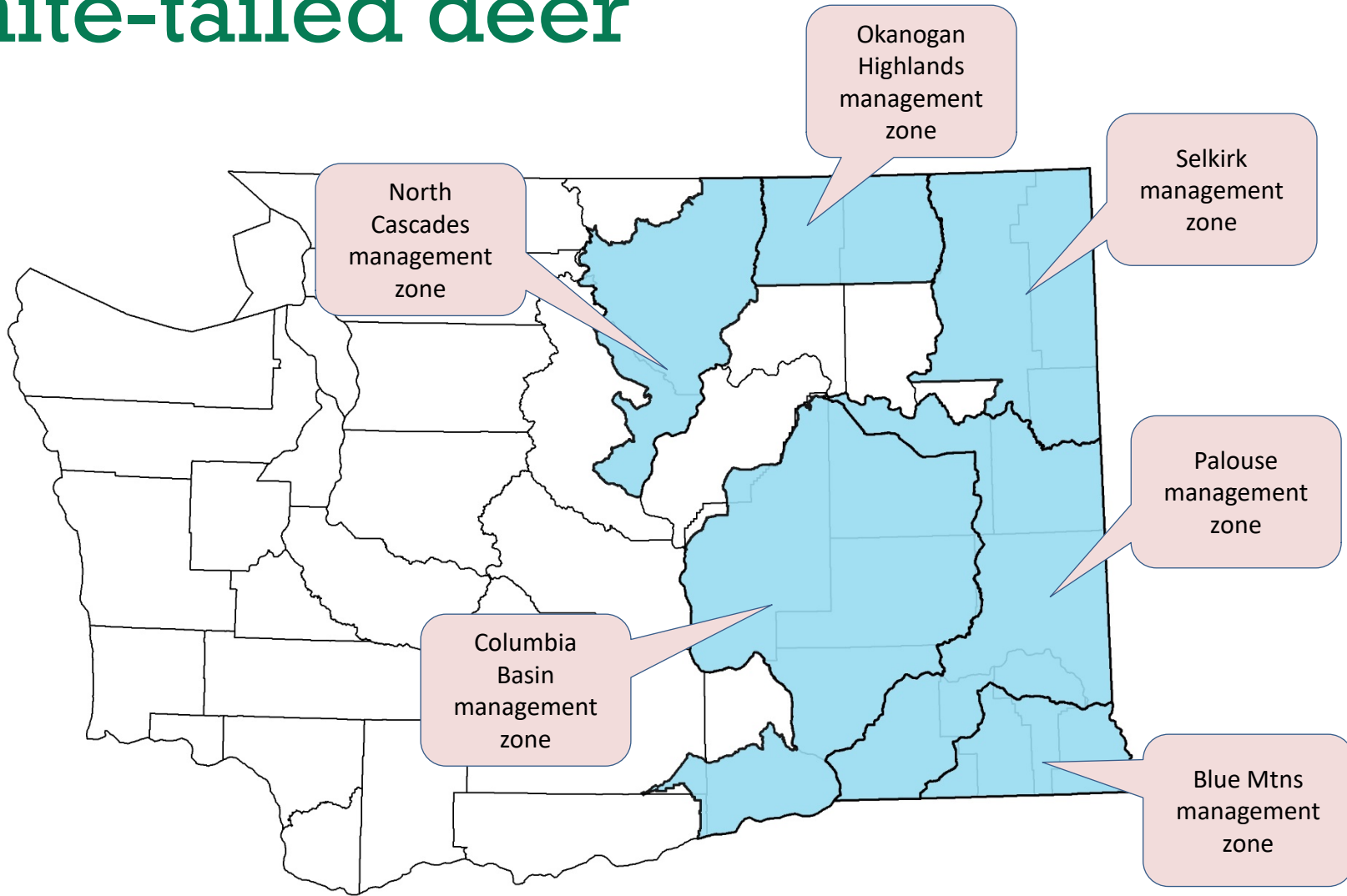




Deer



White-tailed deer



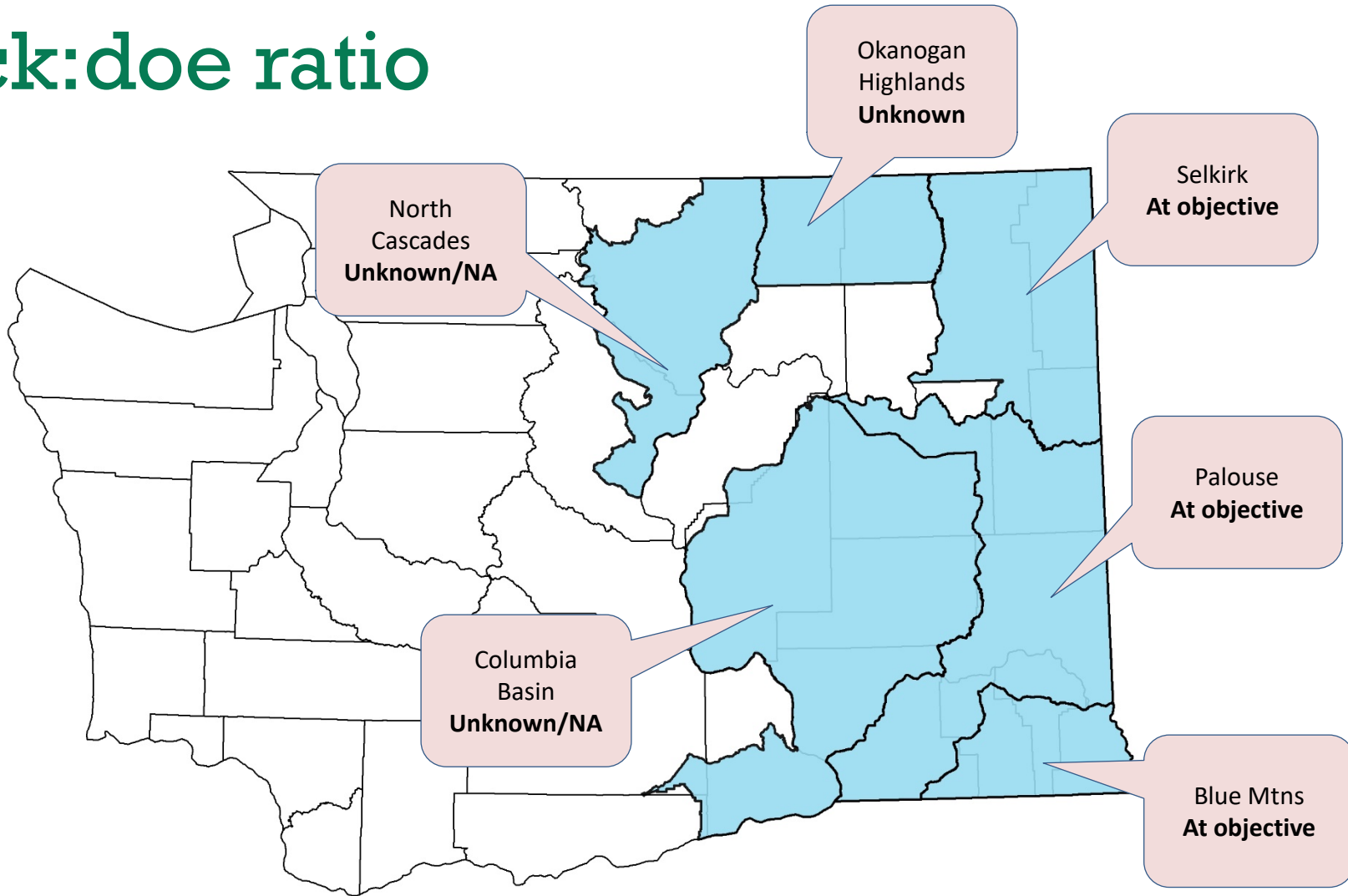
WTD Hunting Intensity Within Regions

Region	Liberal	Moderate	Conservative
Region 1	X	X	
Region 2	X		
Region 3	X		

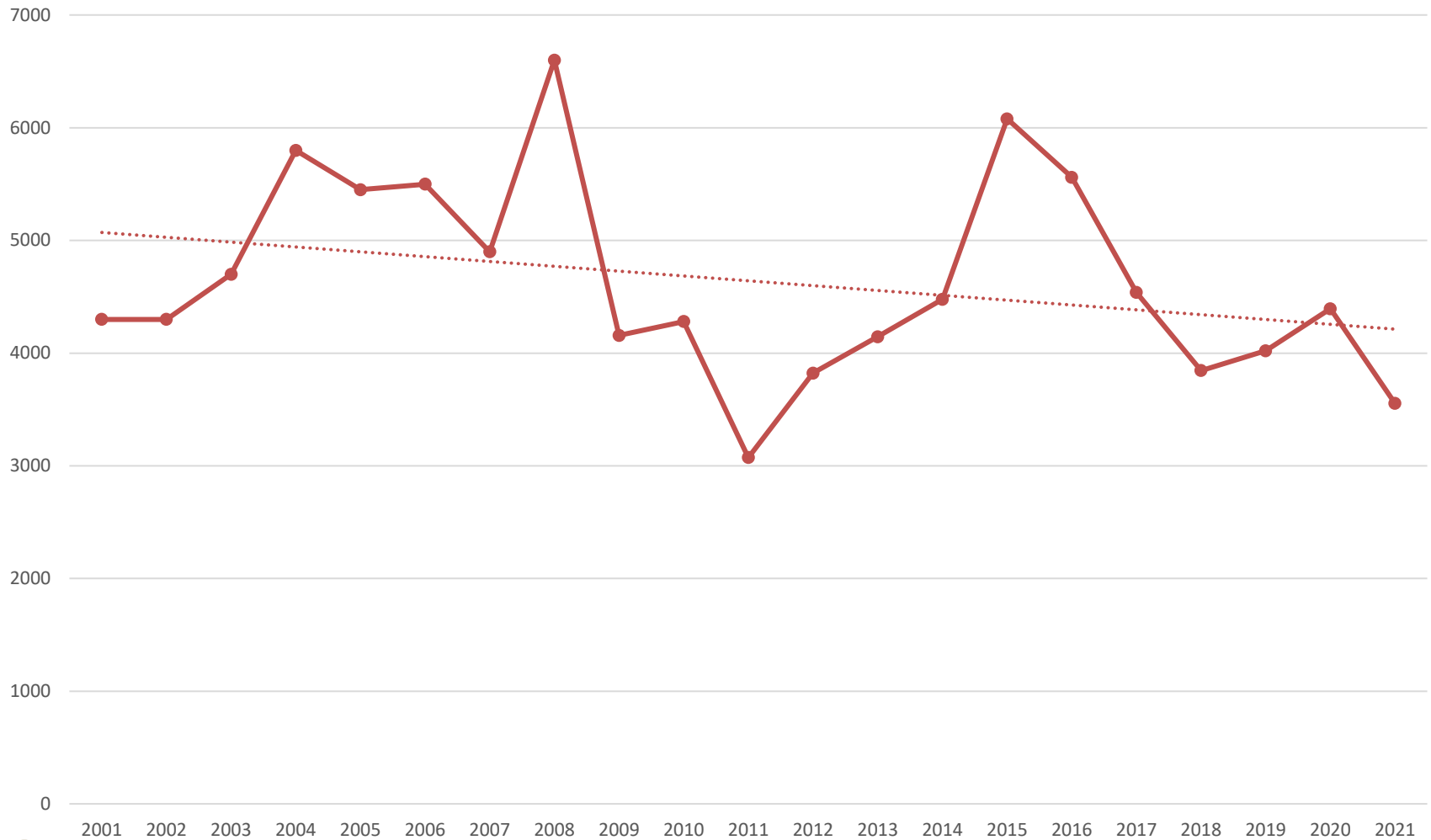


White-tailed deer

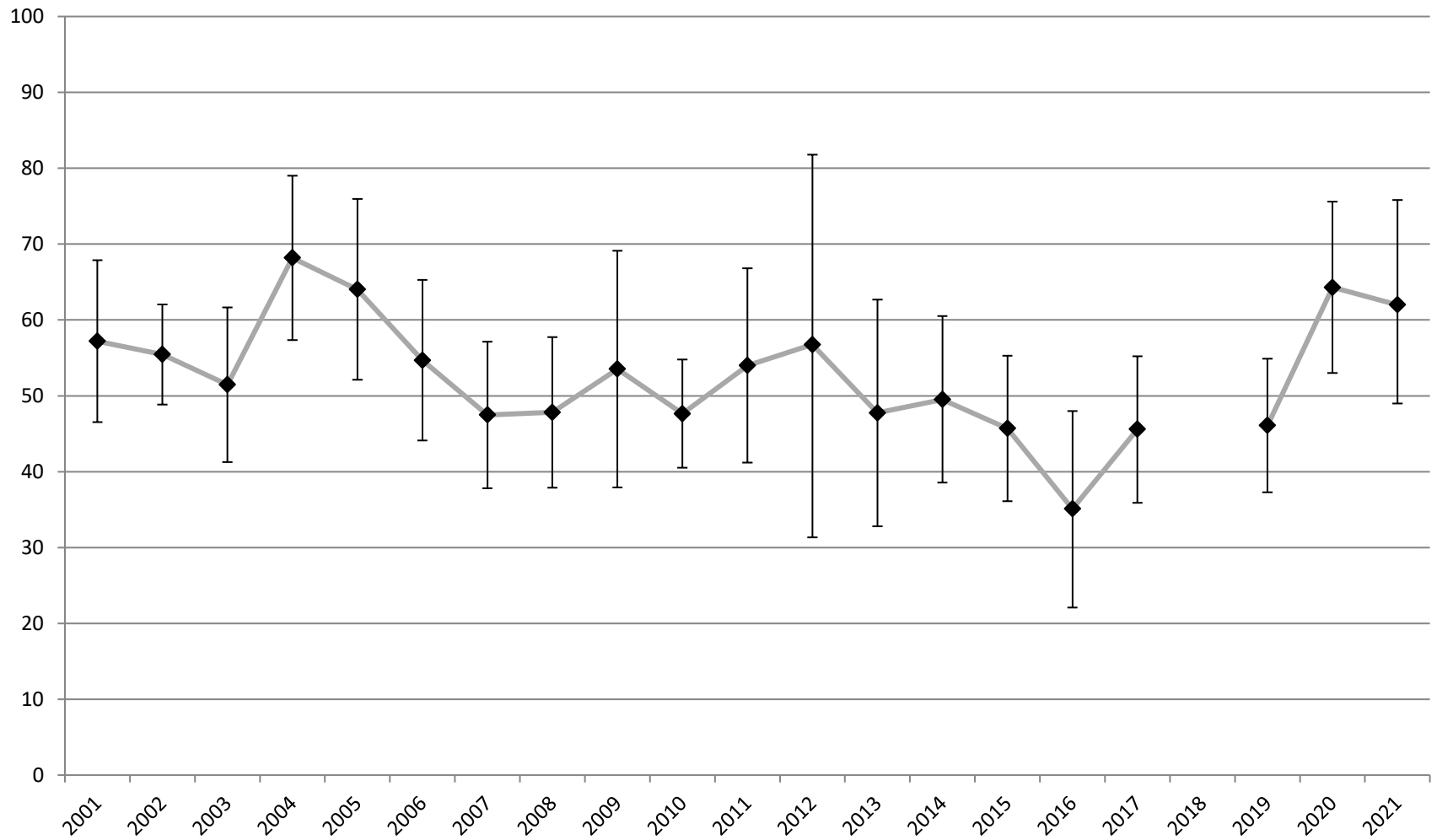
Buck:doe ratio



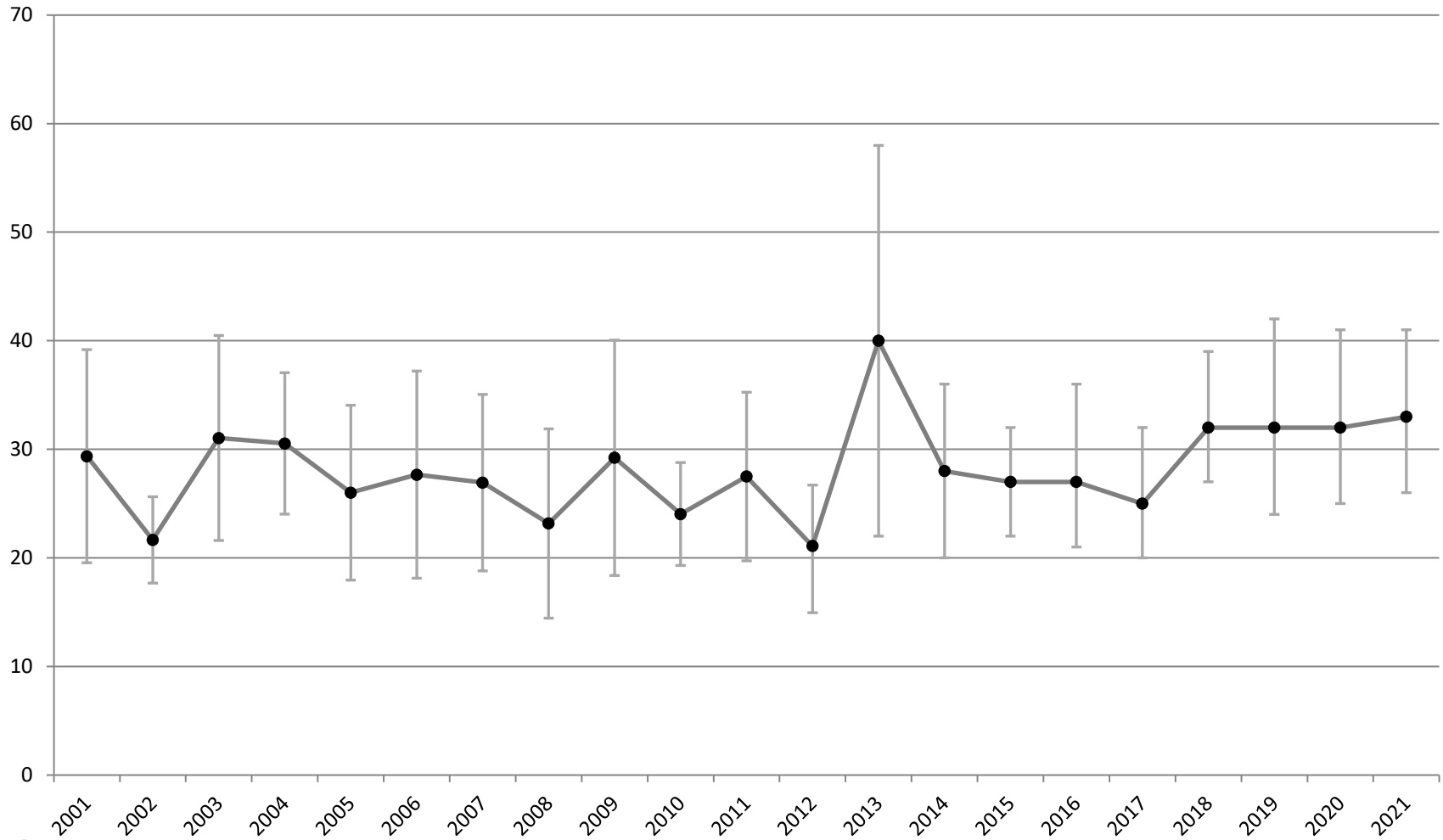
Buck Harvest Selkirk 2001-2021



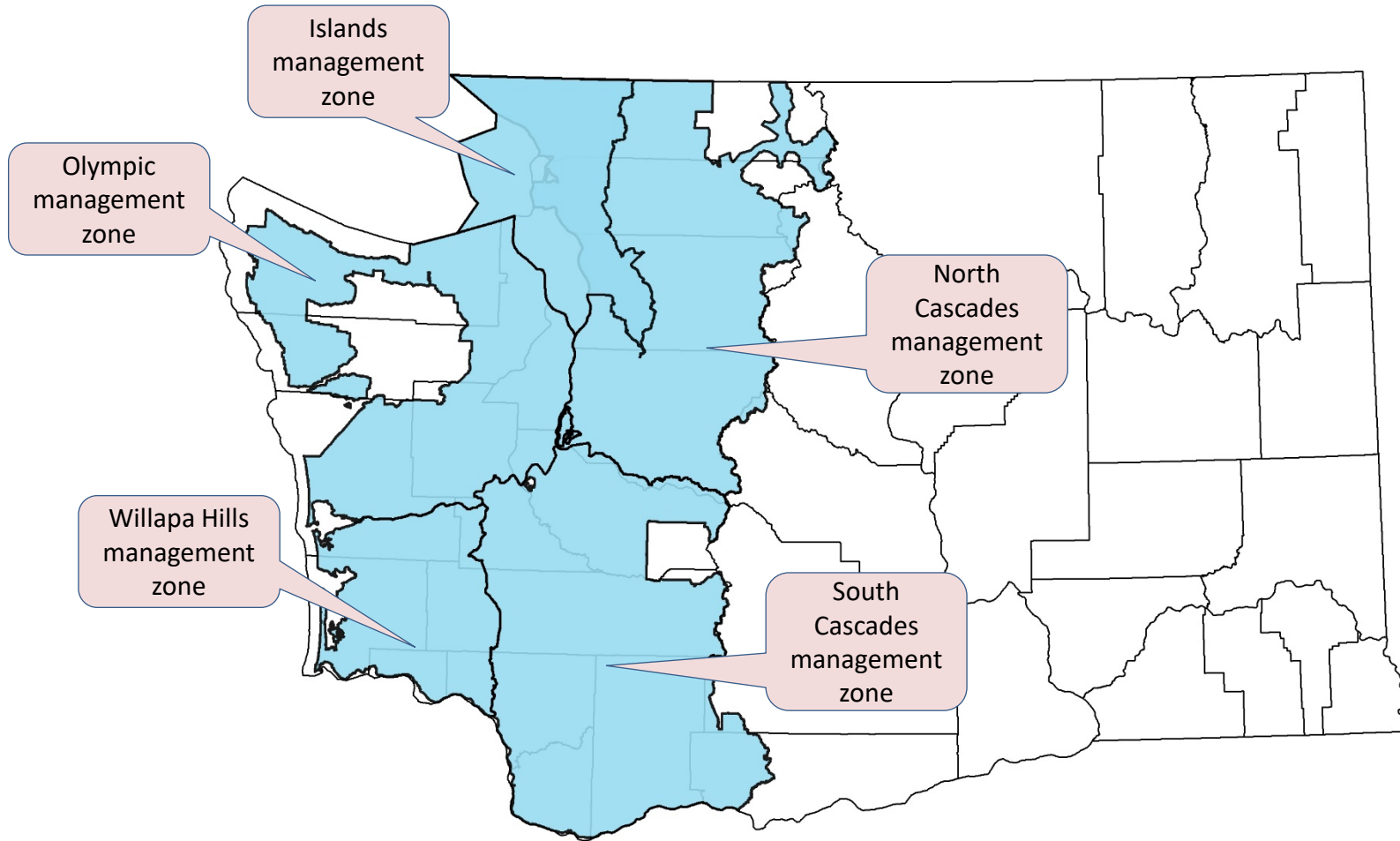
WTD Fawn Ratios GMUs 105-121



WTD Buck Ratios GMUs 105-121



Black-tailed deer



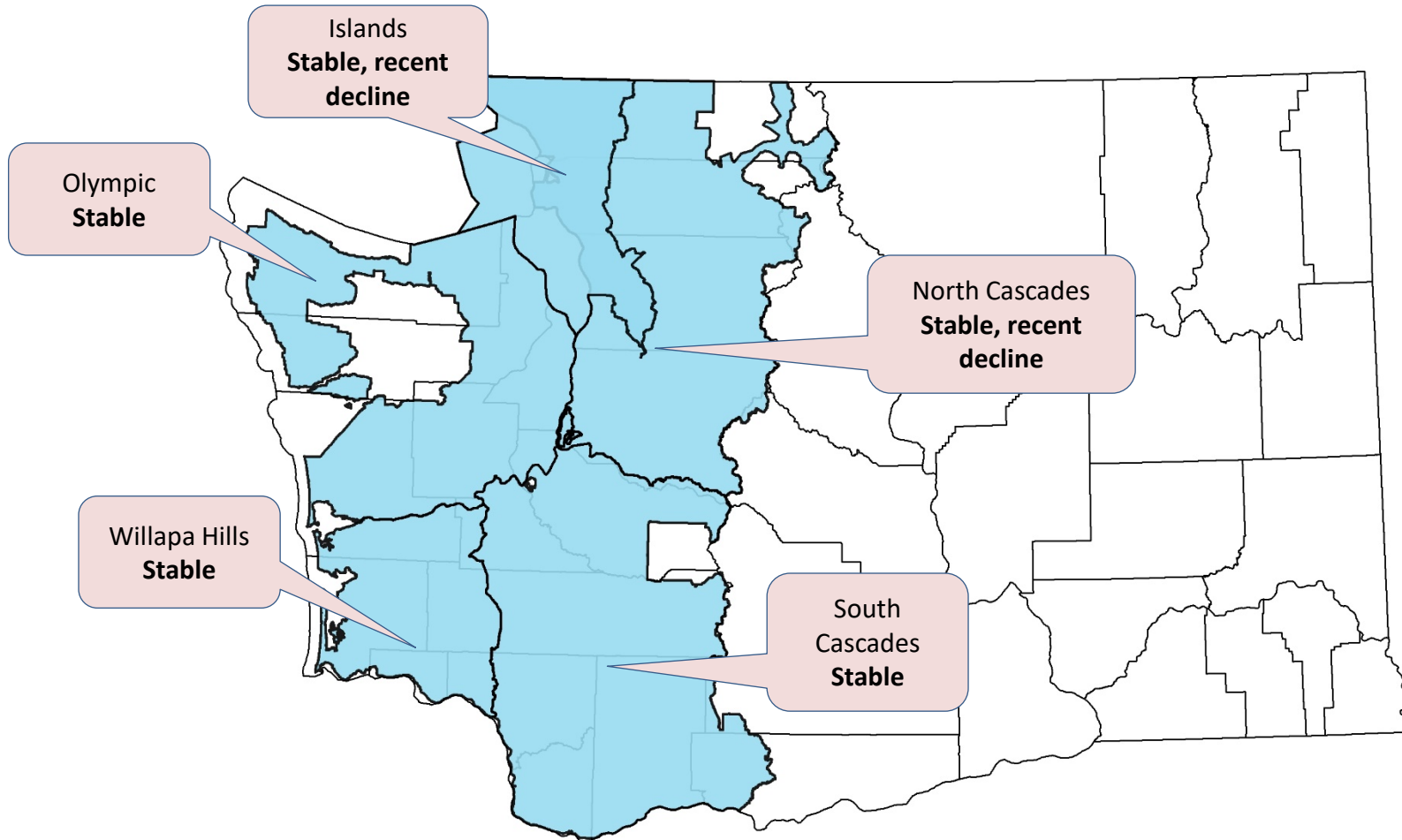
BTD Hunting Intensity Within Regions

Region	Liberal	Moderate	Conservative
Region 4	X	X	
Region 5	X		
Region 6	X		

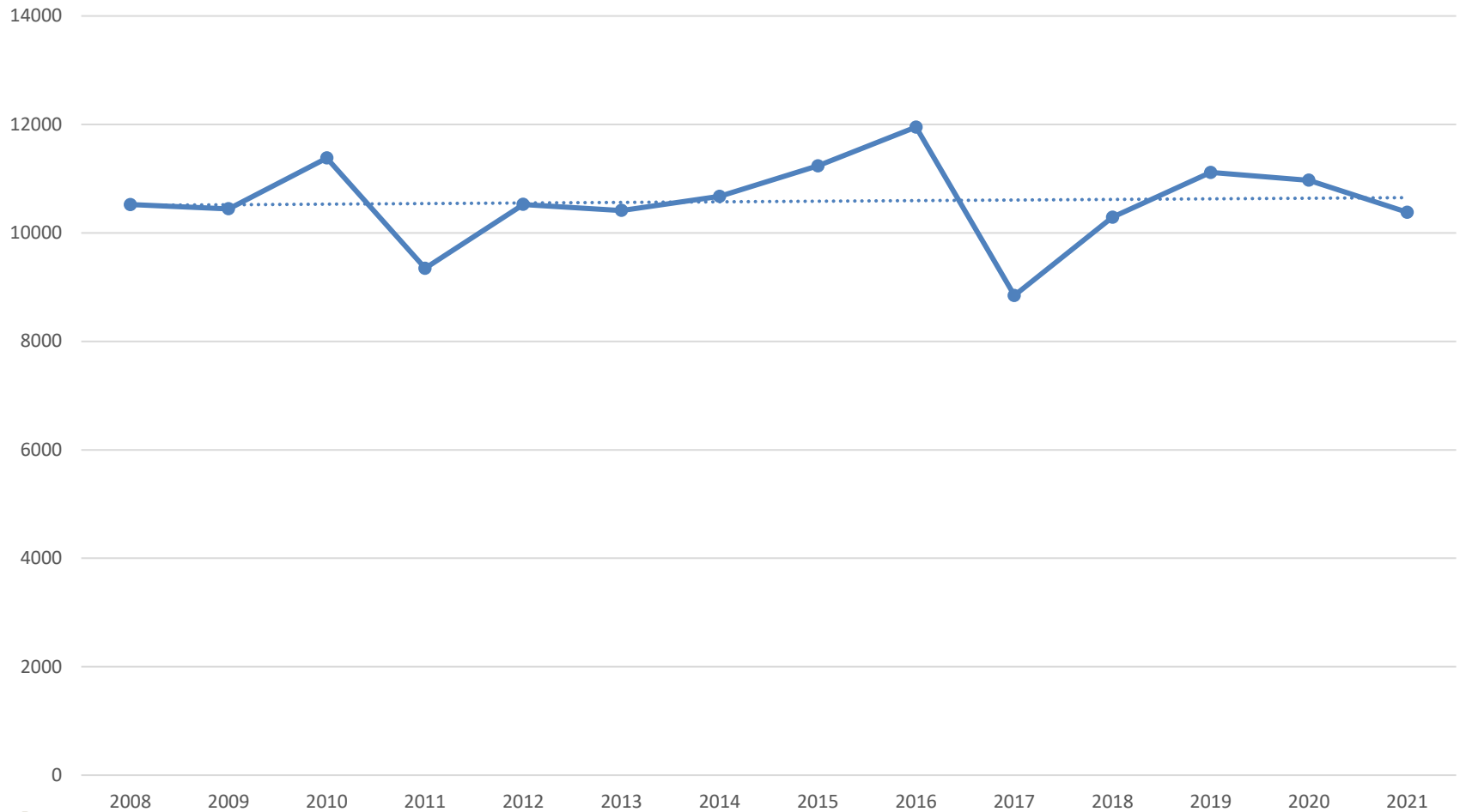


Black-tailed deer

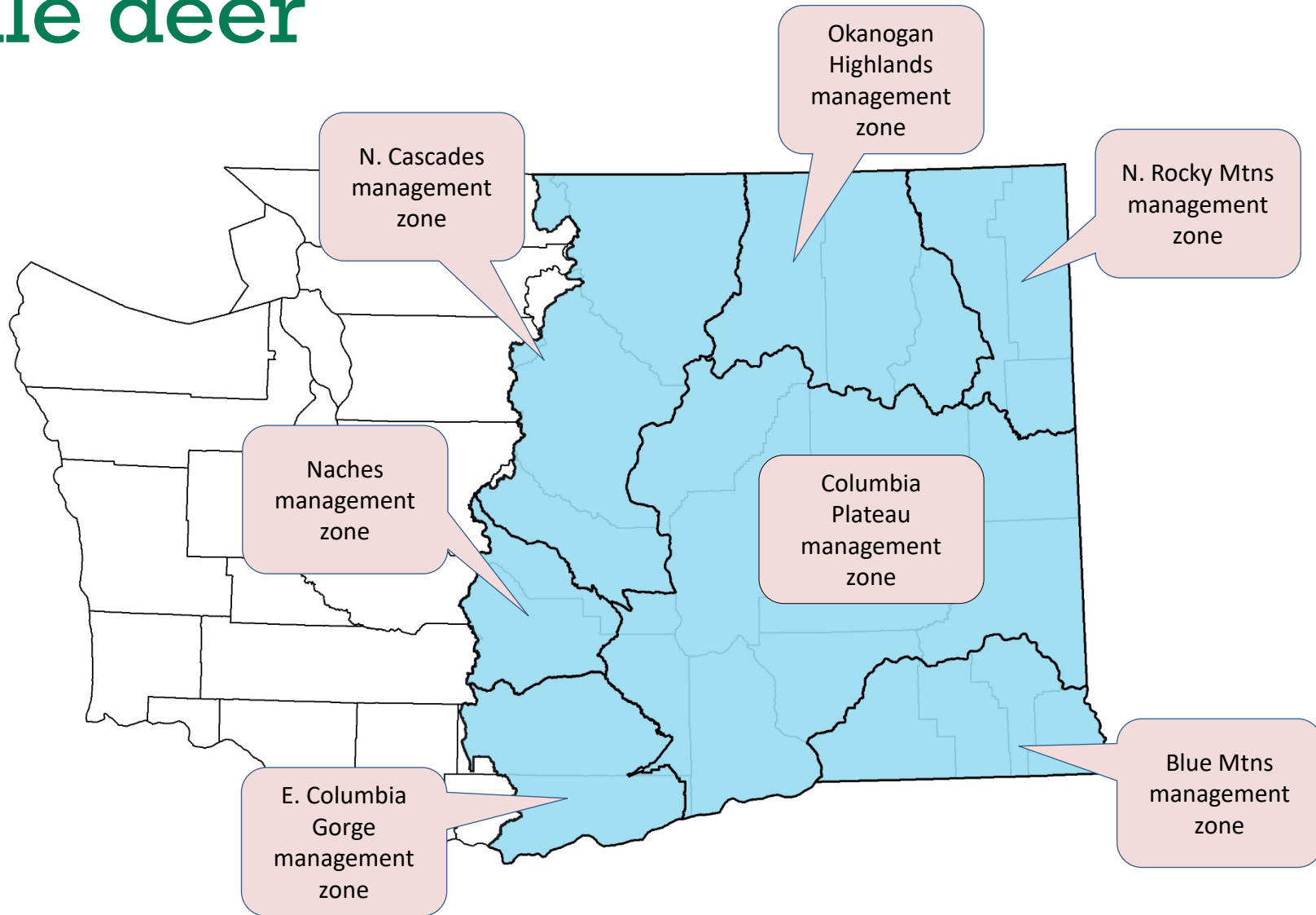
Harvest



BTD Buck Harvest Trends



Mule deer

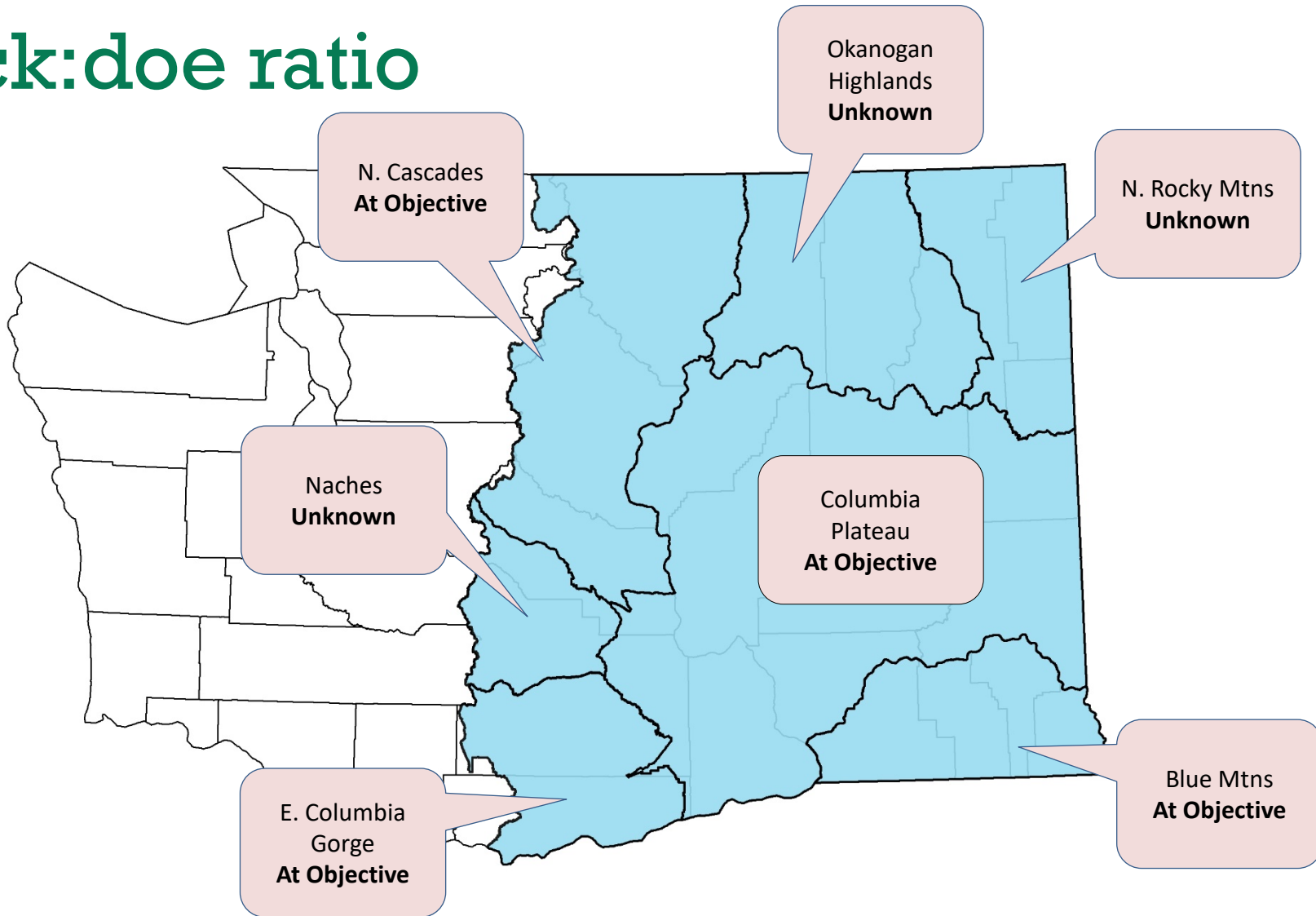


MD Hunting Intensity Within Regions

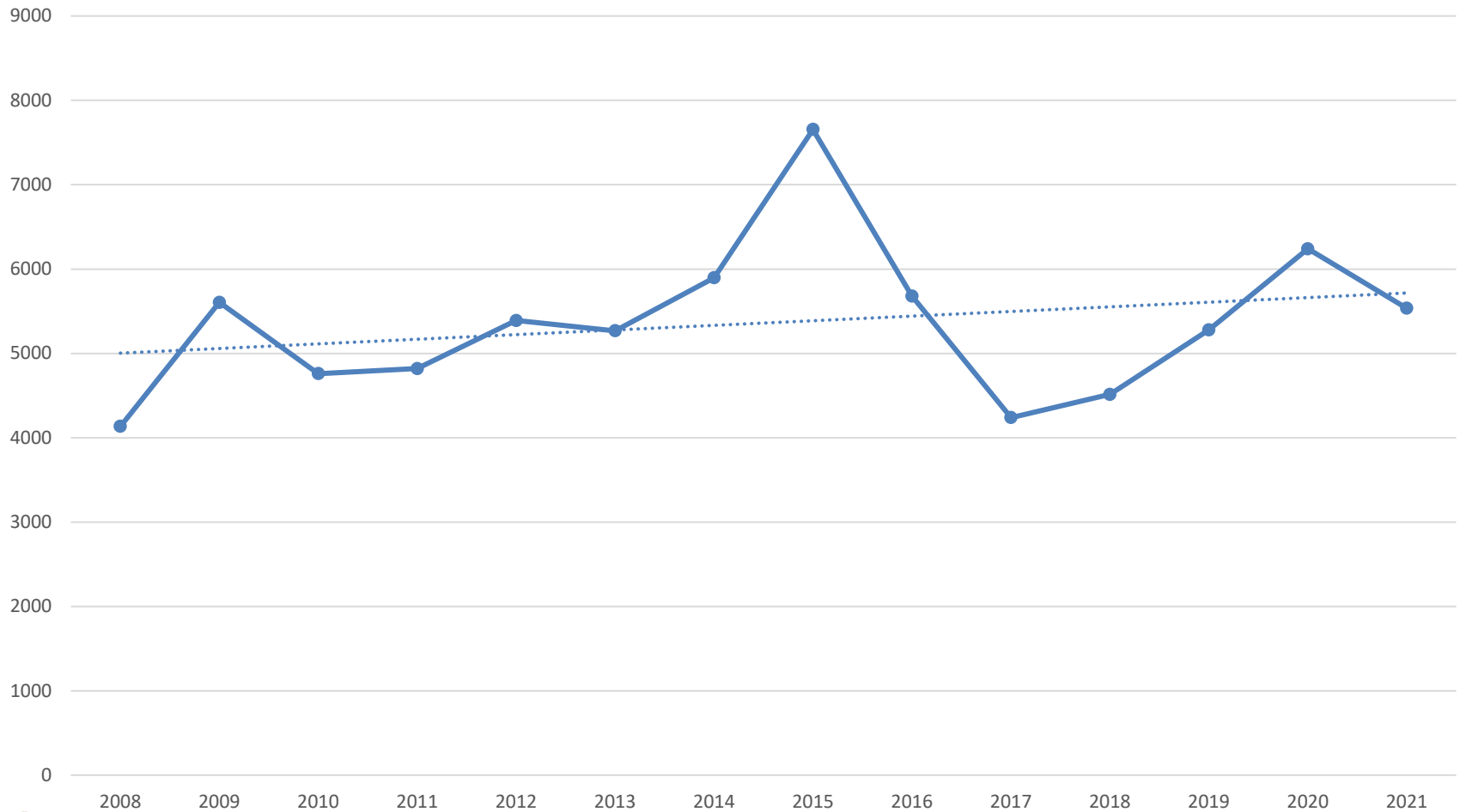
Region	Liberal	Moderate	Conservative
Region 1	X	X	
Region 2	X		X
Region 3	X	X	
Region 5	X		



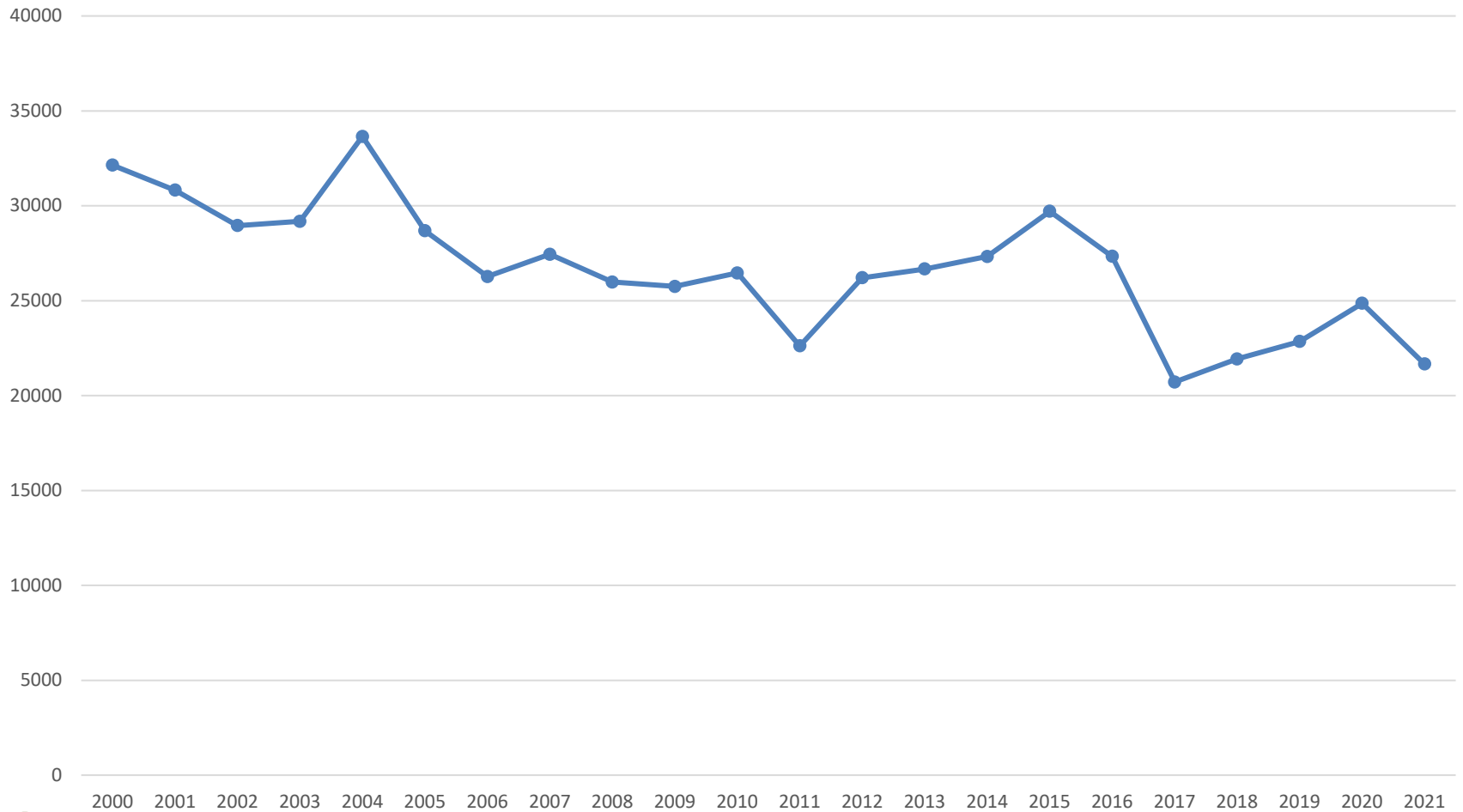
Mule deer Buck:doe ratio



Mostly MD Buck Harvest D4-D8

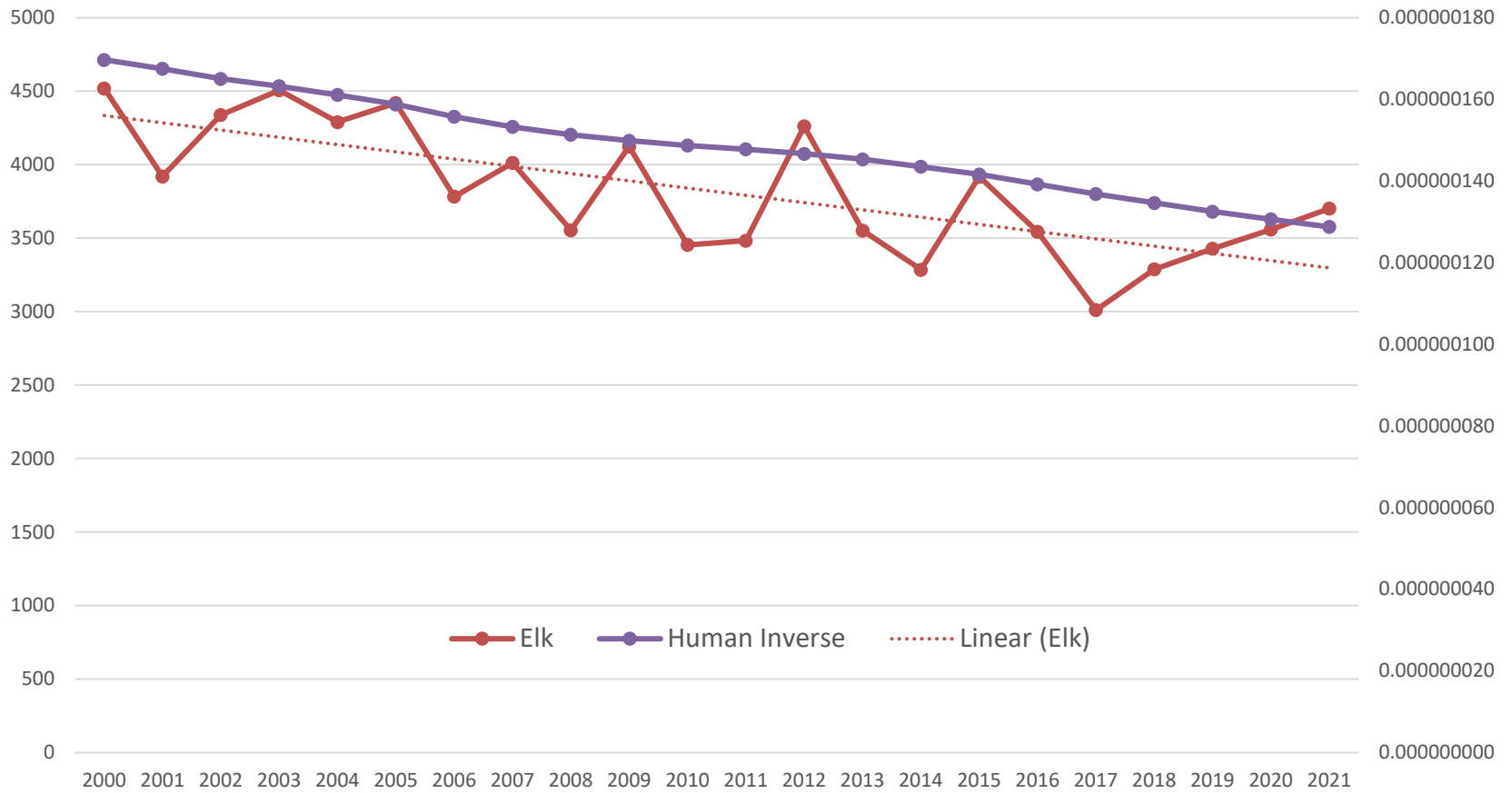


Statewide Buck Deer Harvest Trends



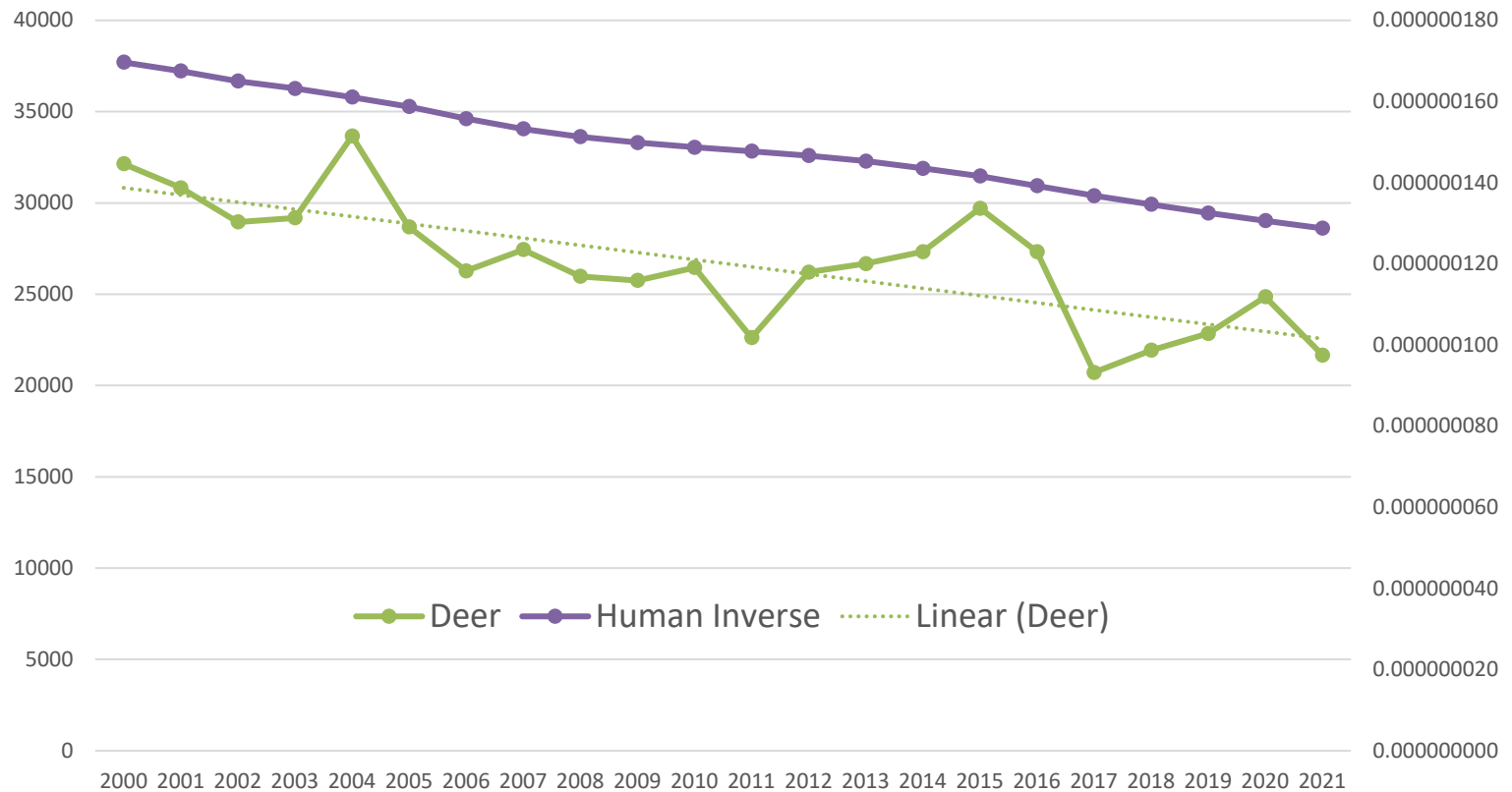
Food For Thought

Bull Elk Harvest



Food For Thought

Statewide Buck Deer Harvest



Questions?

