

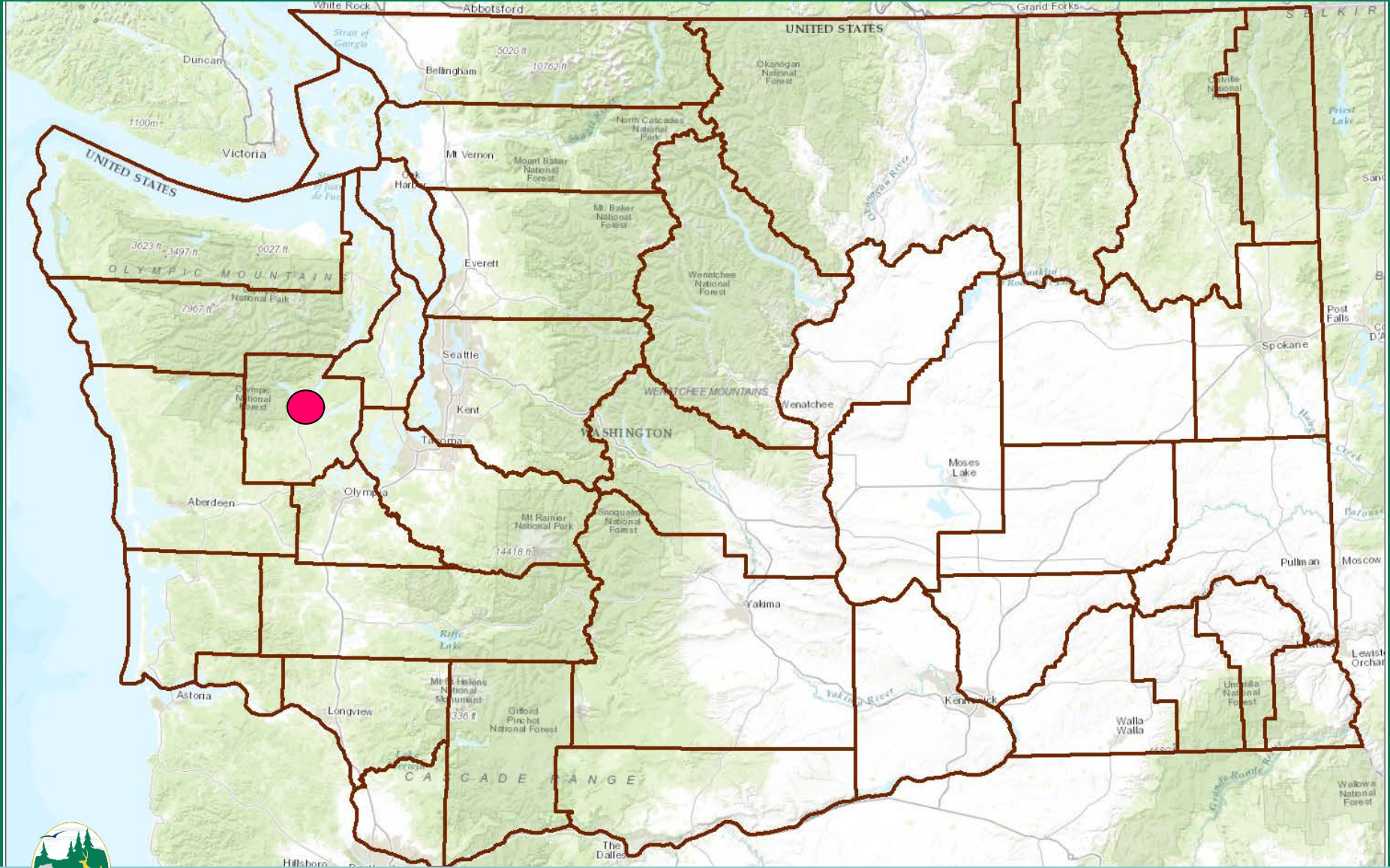
4. Land Transactions

Thom Woodruff

Property Acquisition Supervisor, Wildlife Program



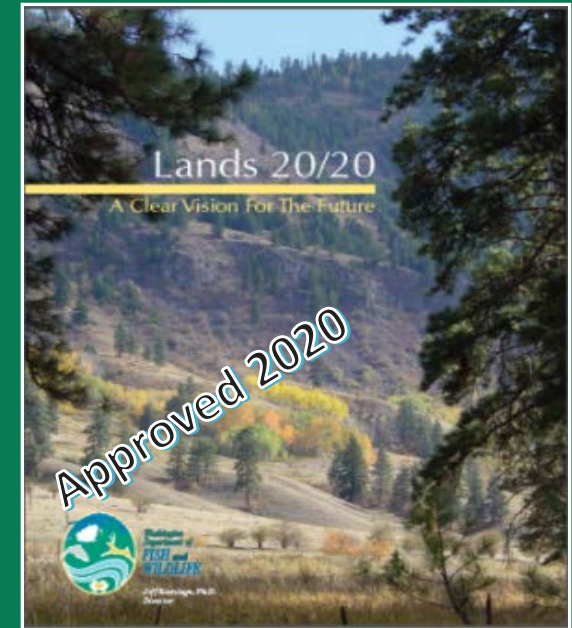
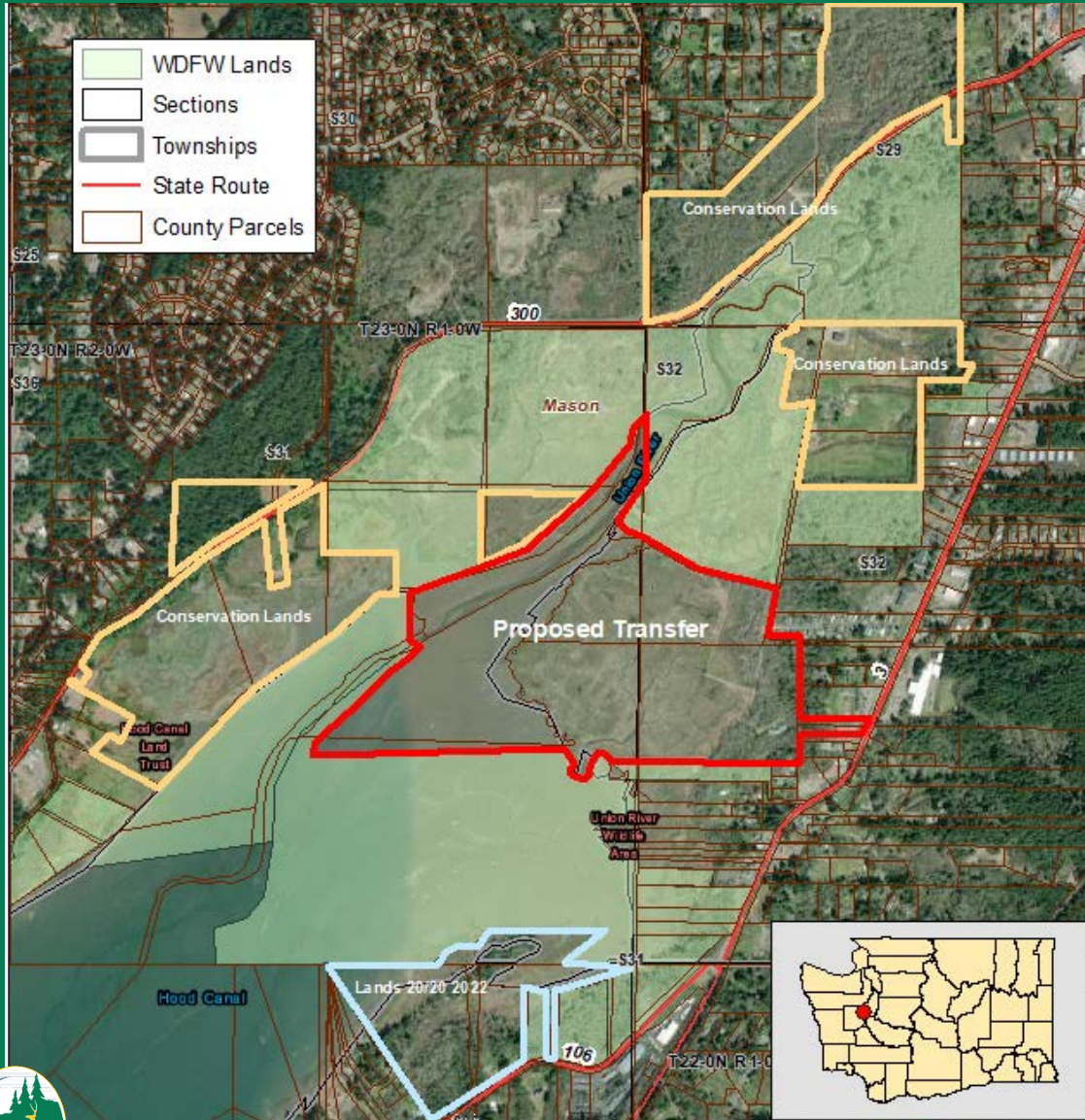
Proposed Transfer – Union River Unit, South Puget Sound WLA 109(+/-) Acres - Mason County, Region 6



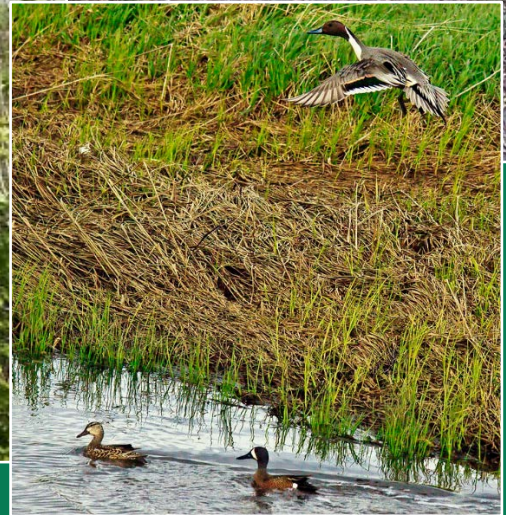
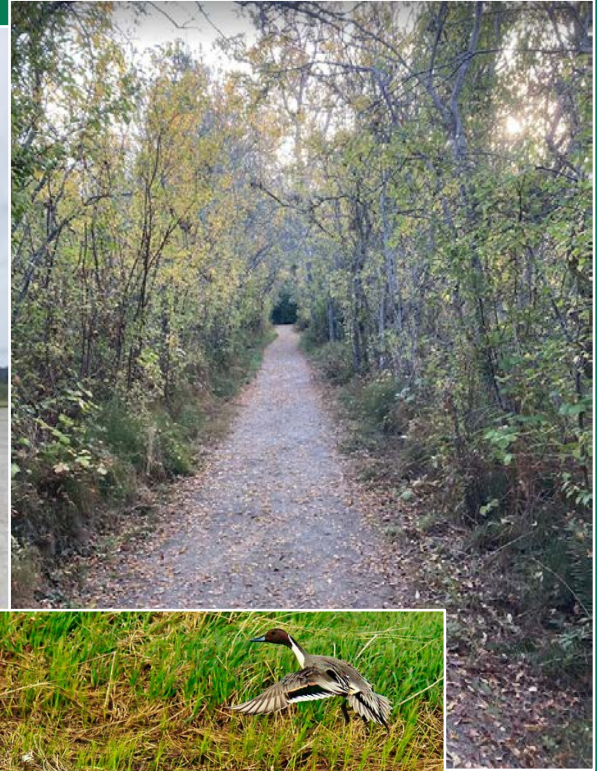
Proposed Transfer – Union River Unit, South Puget Sound WLA 109(+/-) Acres - Mason County, Region 6



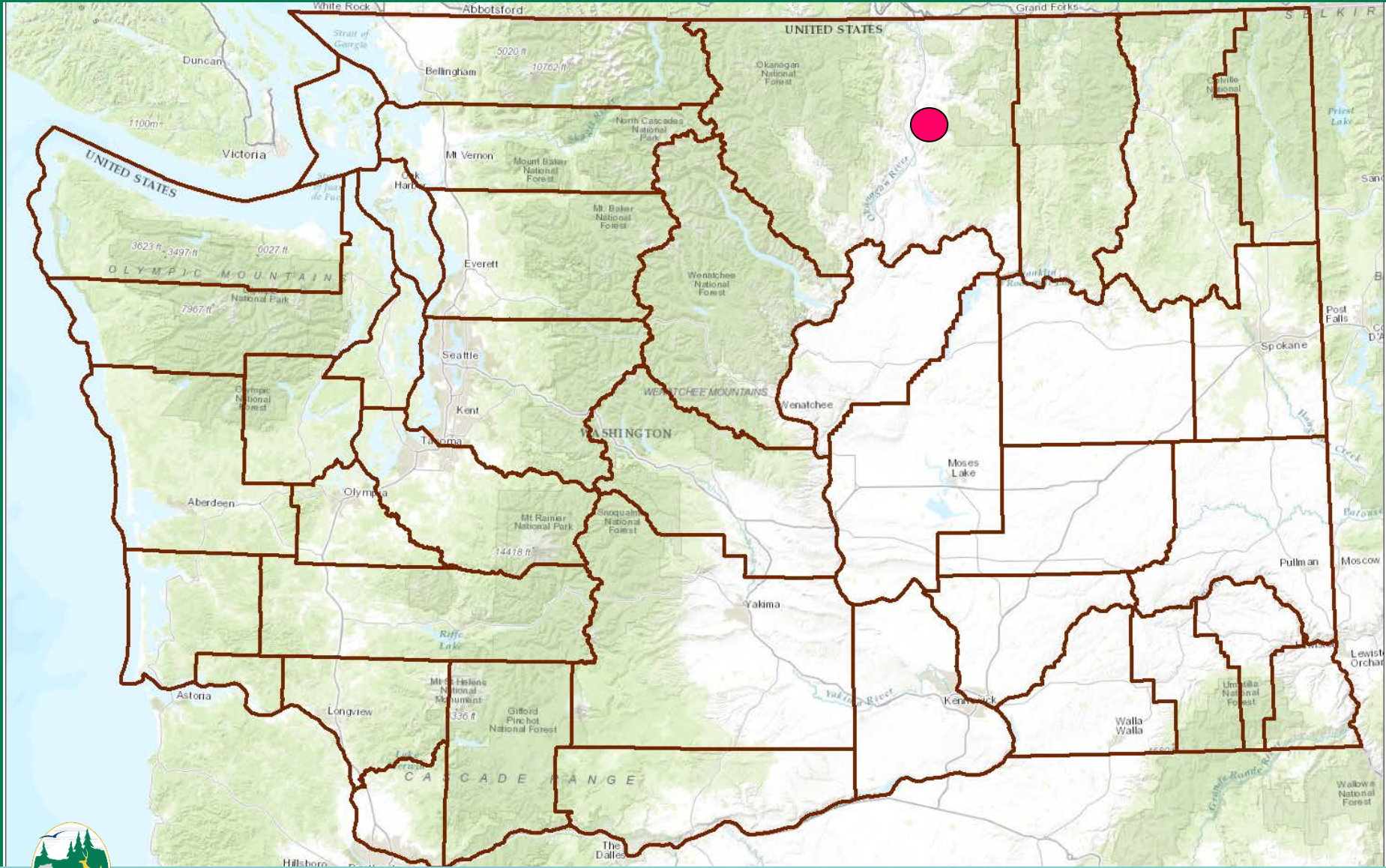
Proposed Transfer – Union River Unit, South Puget Sound WLA 109(+/-) Acres - Mason County, Region 6



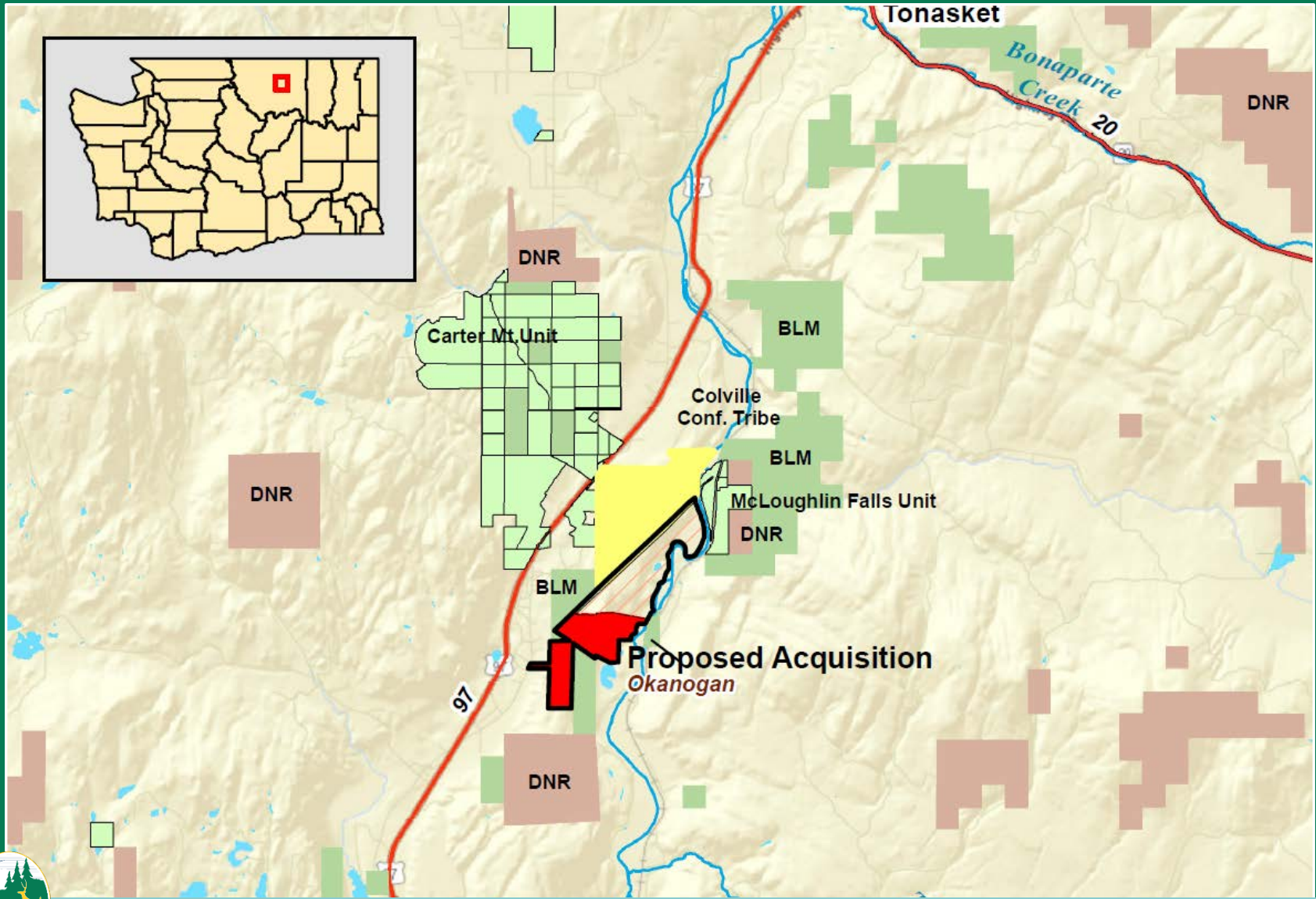
Proposed Transfer – Union River Unit, South Puget Sound WLA 109(+/-) Acres - Mason County, Region 6



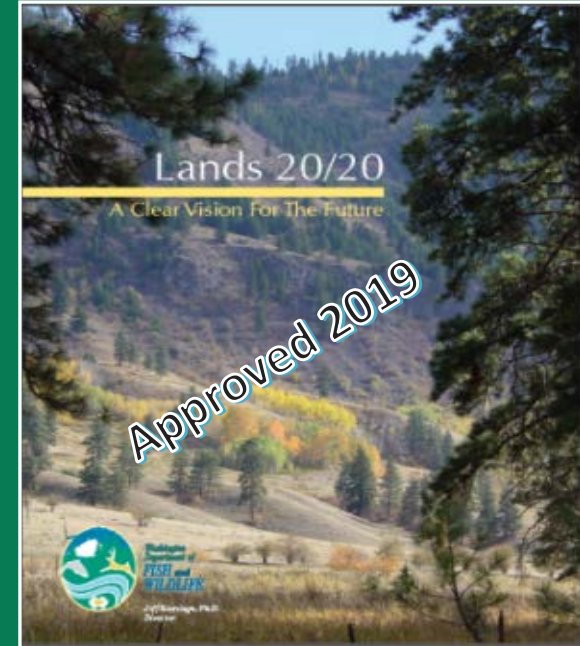
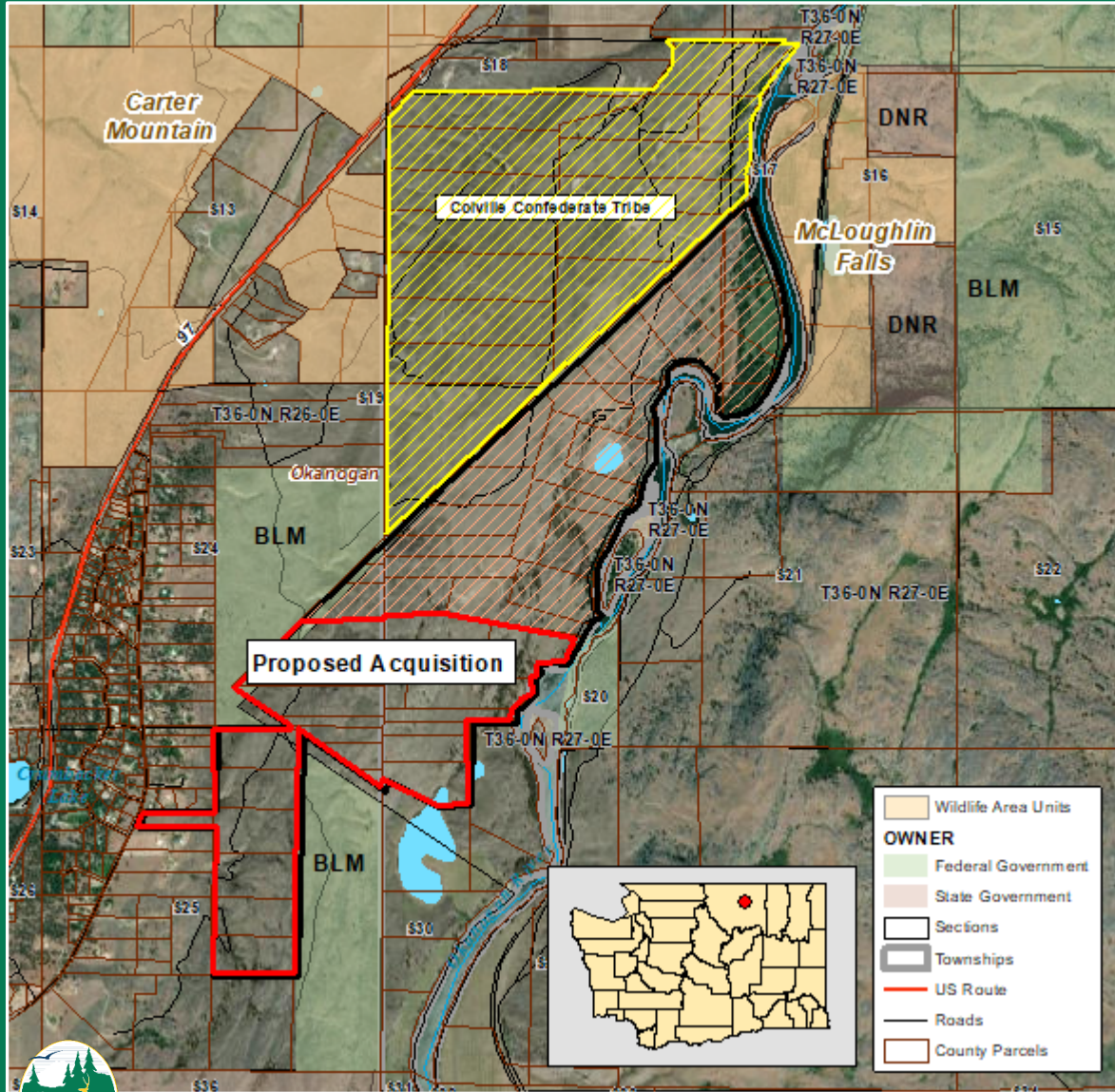
Proposed Acquisition – McLoughlin Falls Unit, Sinlahekin WLA 339(+/-) Acres - Okanogan County, Region 2



Proposed Acquisition – McLoughlin Falls Unit, Sinlahekin WLA 339(+/-) Acres - Okanogan County, Region 2



Proposed Acquisition – McLoughlin Falls Unit, Sinlahekin WLA 339(+/-) Acres - Okanogan County, Region 2 –



Appraised Value \$1,356,000



Proposed Acquisition – McLoughlin Falls Unit, Sinlahekin WLA 339(+/-) Acres - Okanogan County, Region 2





Questions?

