

2023 Expedited Lands 20/20 Projects* Commission Review

*Proposed acquisition projects which fall outside the scheduled annual Lands 20/20 cycle, due to urgency.



WDFW-Managed Lands: Protecting Land and Water for Wildlife and People

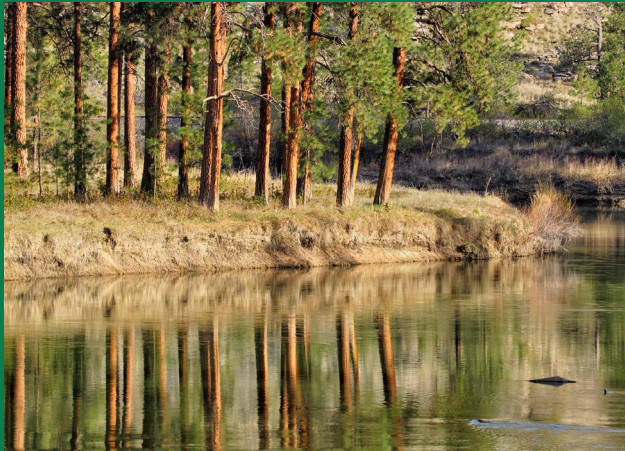


Our vision is a Washington where fish and wildlife thrive in healthy habitats, and where people experience and enjoy our state's natural gifts for generations to come.

By Actively Managing Lands, WFDW:

- Preserves natural and cultural heritage
- Provides access for fishing, hunting, and other wildlife related recreation
- Fosters experiences and exploration

Lands 20/20 Introduction



Lands 20/20: A Clear Vision for the Future “Protecting our unique quality of life by maintaining a citizen-supported portfolio of lands to sustain Washington’s diverse fish and wildlife and their habitats into the next century.”

Outcome of Lands 20/20, Director approval to pursue funding

Why Does WDFW Buy Land?

Protecting Land and Water for Wildlife and People



- Conserve and restore the diversity of Washington's fish and wildlife species and habitats*
- Enhance sustainable fishing, hunting and other wildlife-related outdoor opportunities*
- Improve management of current WDFW Lands*
- Preserve working lands for agriculture, forestry, and other sectors of the outdoor economy, particularly in rural areas*

Questions WDFW Asks

Protecting Land and Water for Wildlife and People



- *Willing seller*
- *Partnerships*
- *Best conservation alternatives?*
- *Conservation easements?*
- *Long-term opportunities and ecological values*
- *Larger, contiguous habitats*
- *Ecological and social importance*
- *Details re key land value components*
 - *Conservation, recreation, cultural, connectivity, water rights, management challenges, threat, tribal, local community and public interests and perspectives*

Acquisition Steps

Scoping
and Need

Lands 20/20

Funding

Land
Transaction

Integrating
Ownership



Acquisition Steps

Scoping
and Need

Lands 20/20

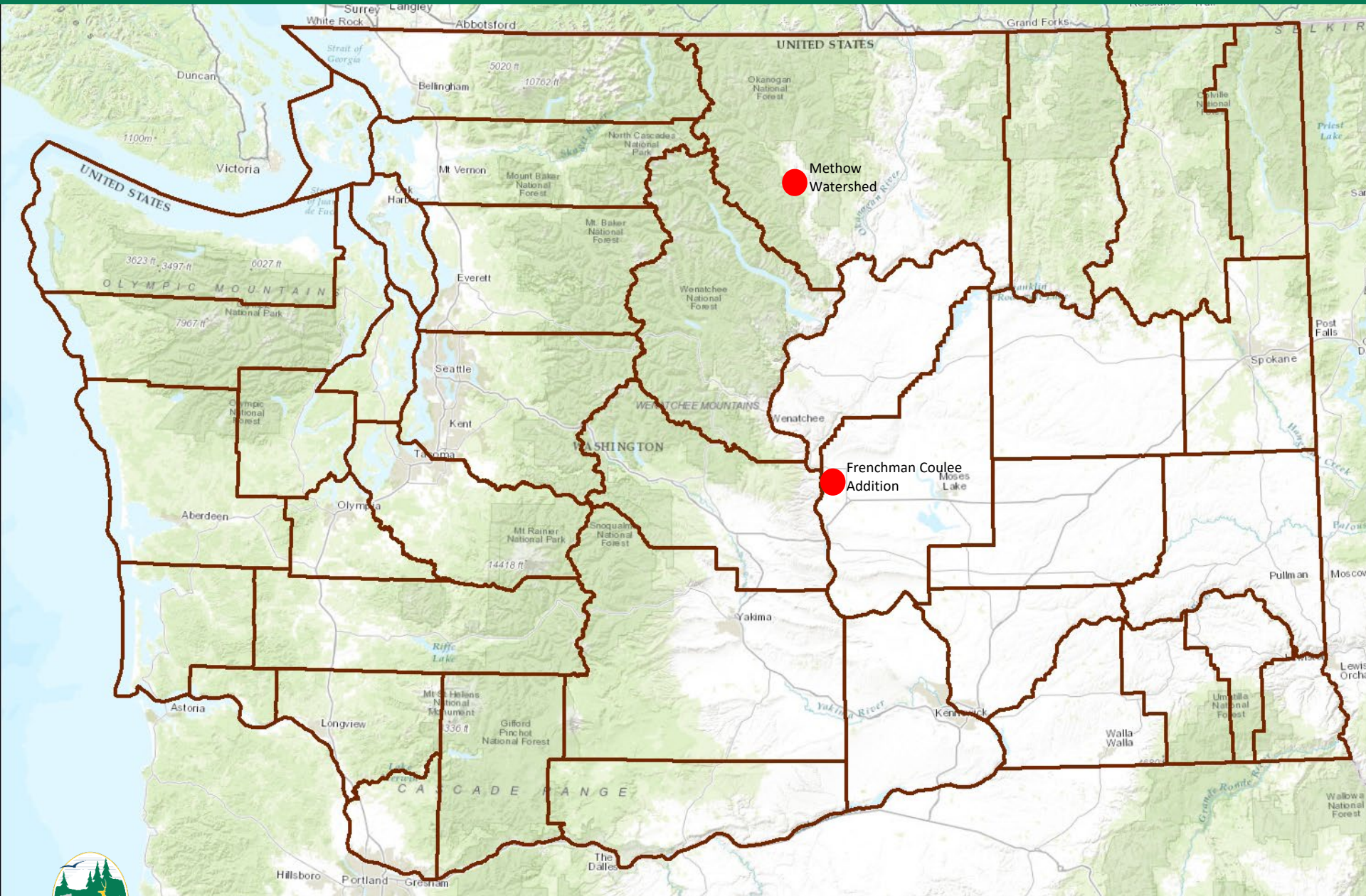
Funding

Land
Transaction

Integrating
Ownership



2023 Lands 20/20 Expedited Review

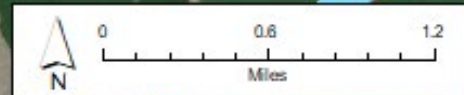




*Frenchman Coulee
Grant County*



*Frenchman Coulee
Grant County*

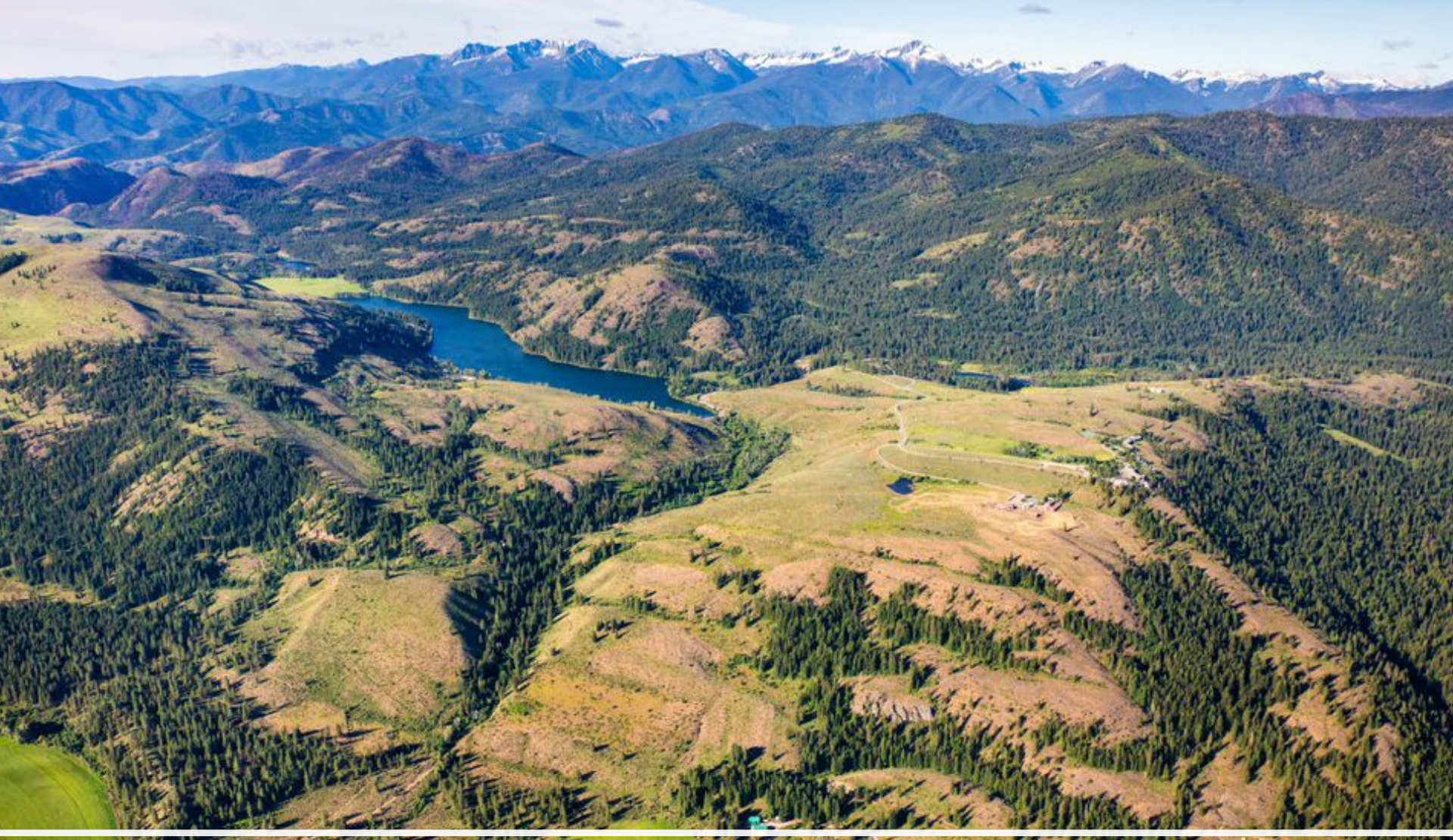


Proposed

Frenchman Coulee Addition

- Wildlife Area Units
- Interstate
- Lakes
- Rivers

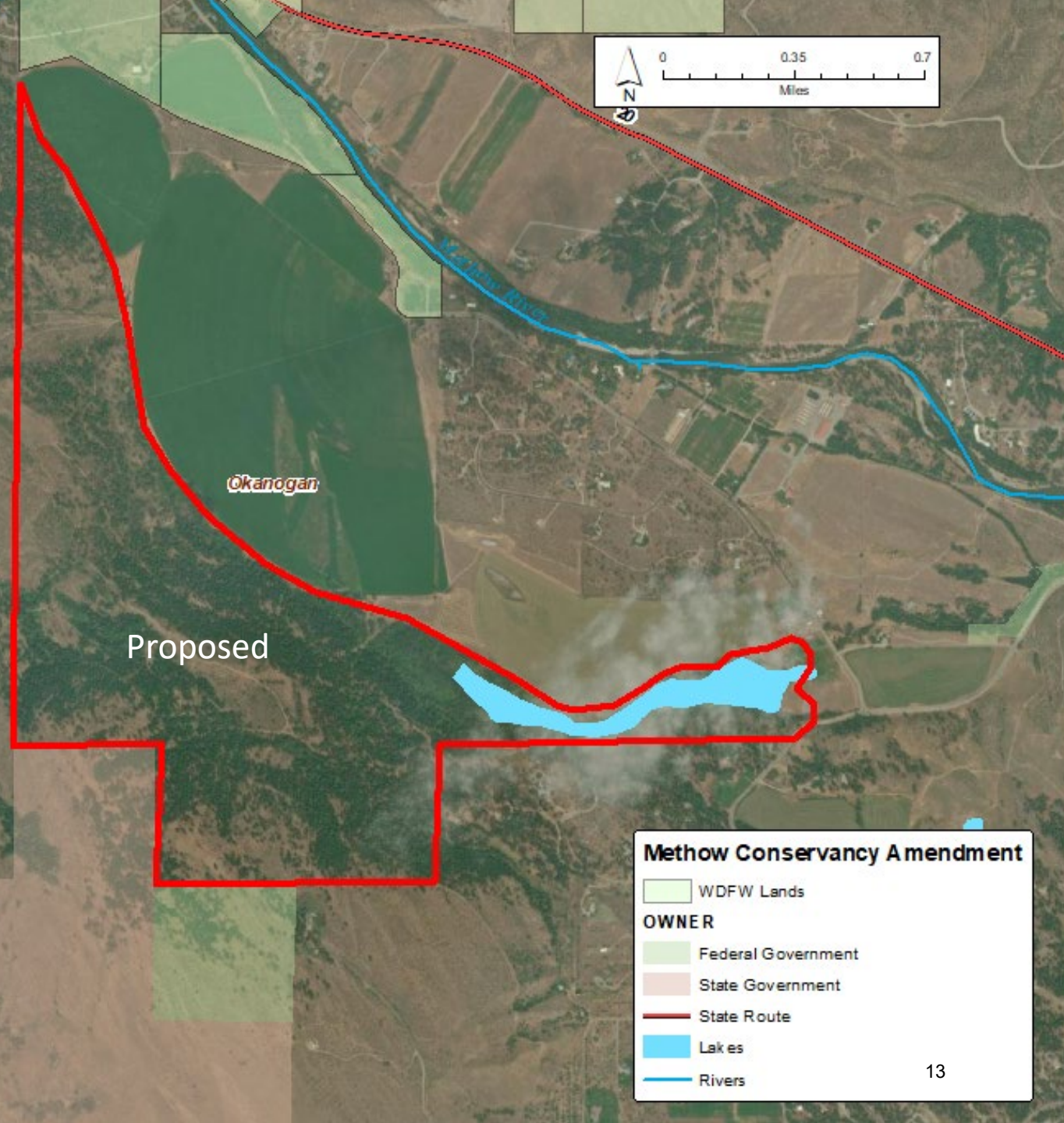
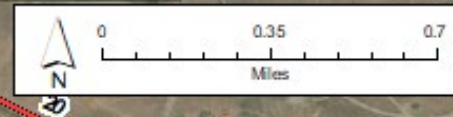




*Methow Watershed
Okanogan County*



*Methow Watershed
Okanogan County*

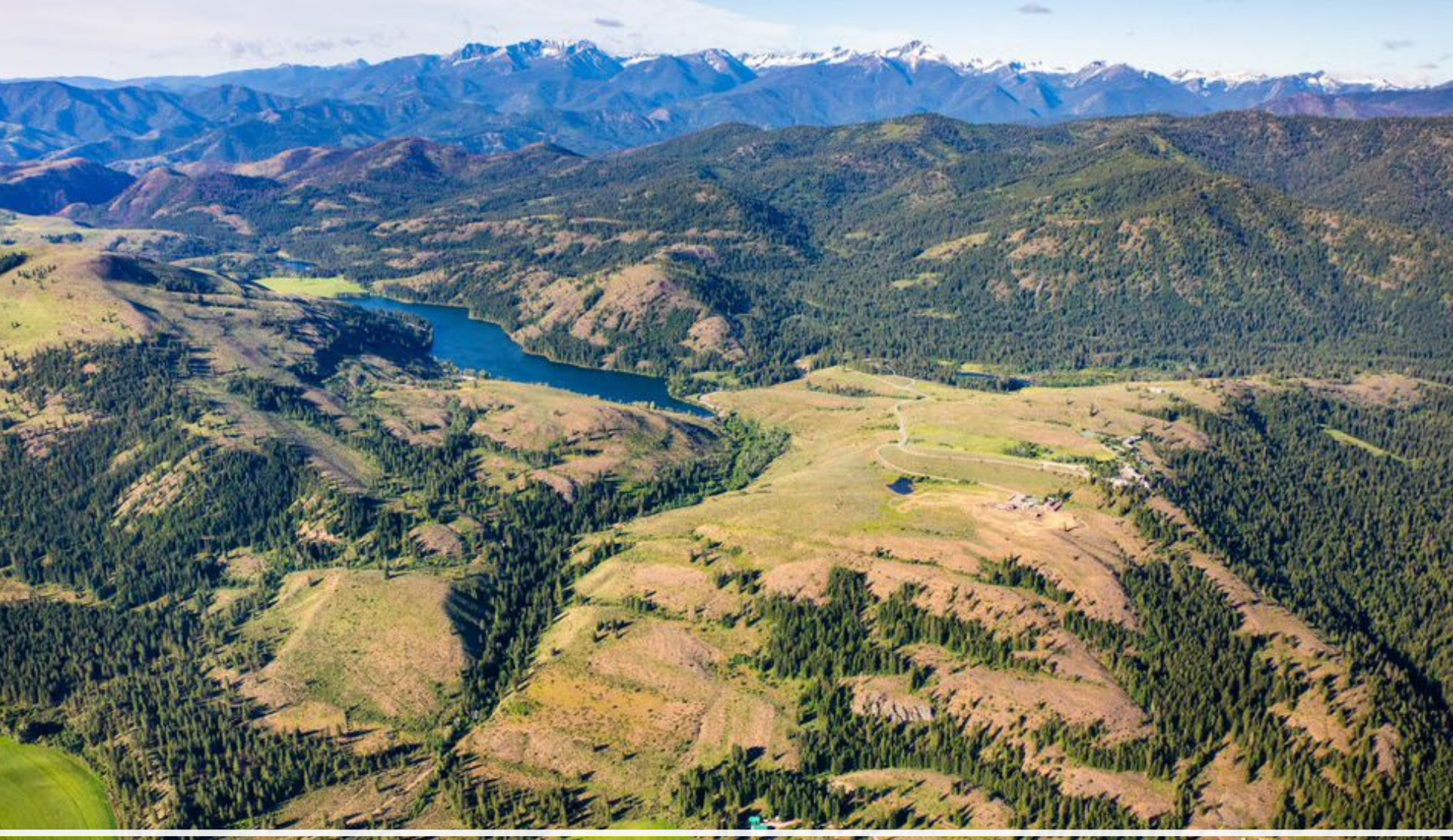


Methow Conservancy Amendment

- WDFW Lands

OWNER

- Federal Government
- State Government
- State Route
- Lakes
- Rivers



Questions

