

D. Land Transaction

May 12th, 2023

Commission Meeting

Karen Edwards

Real Estate Services Manager, Wildlife Program

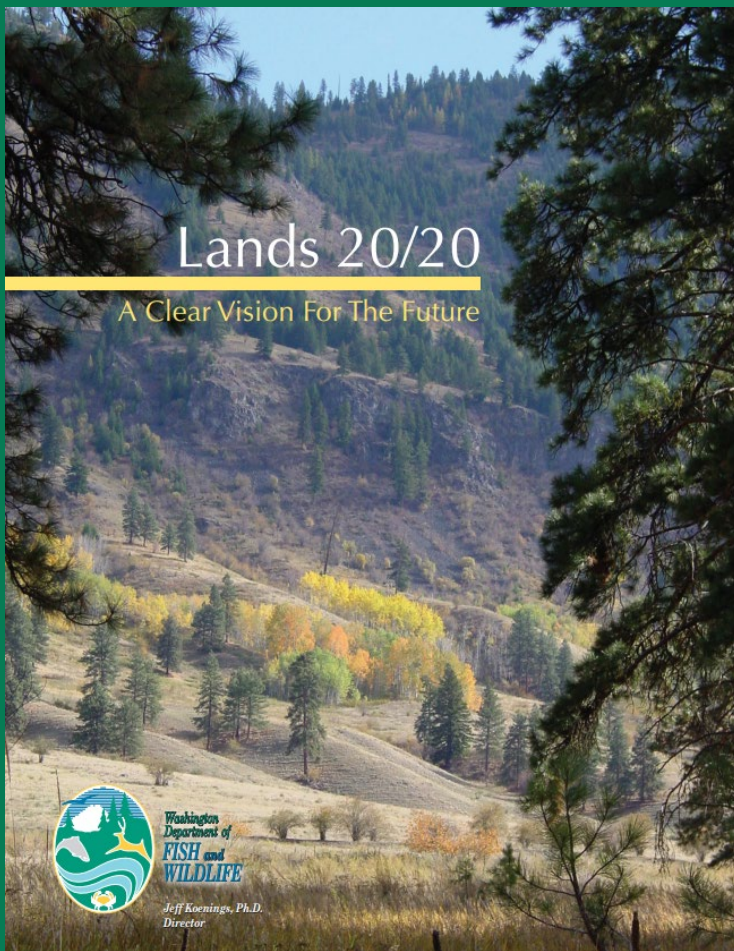




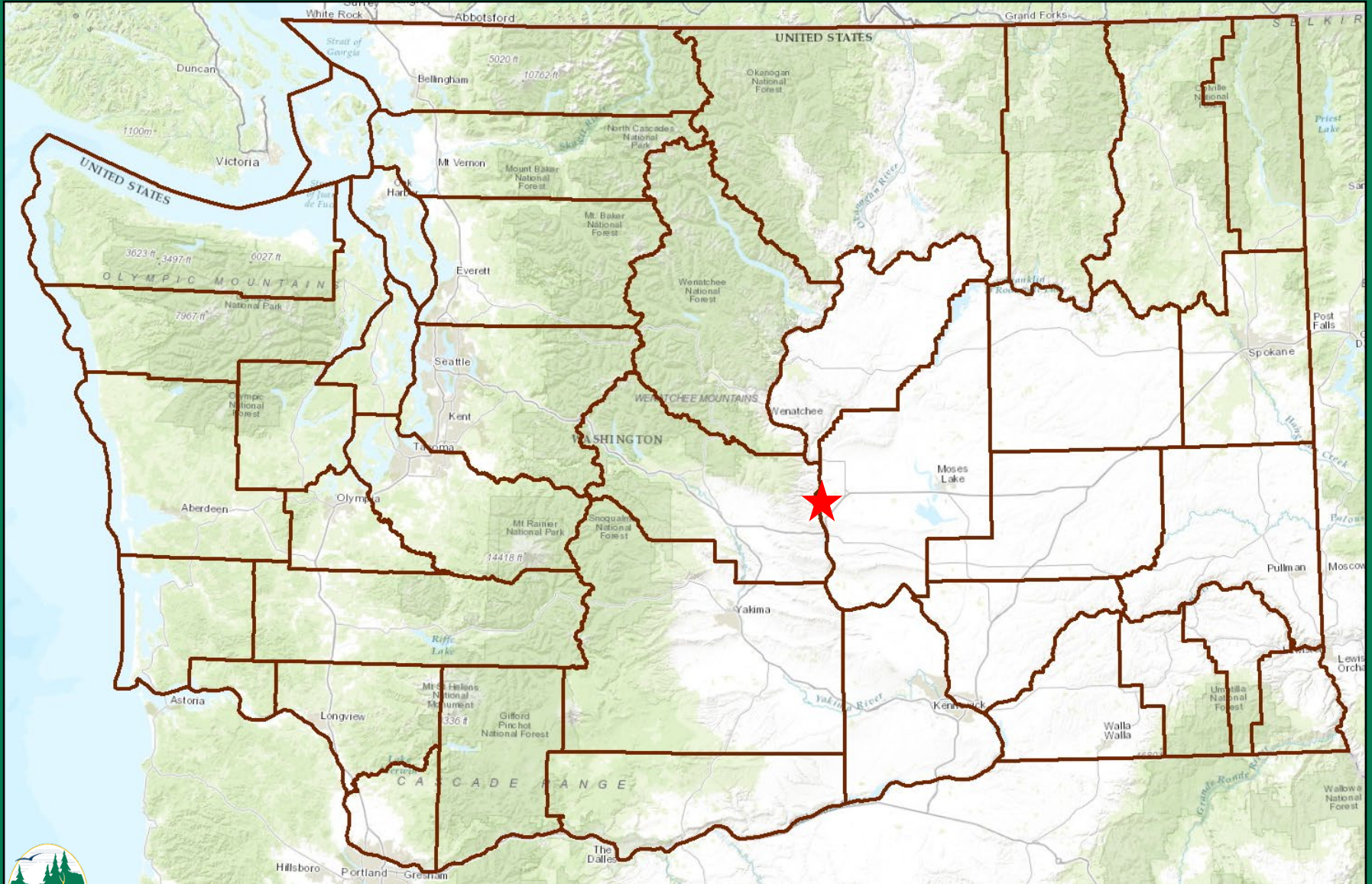
Strategic Acquisition Priorities for Land Acquisitions

[Land acquisitions](#) | [Washington Department of Fish & Wildlife](#)

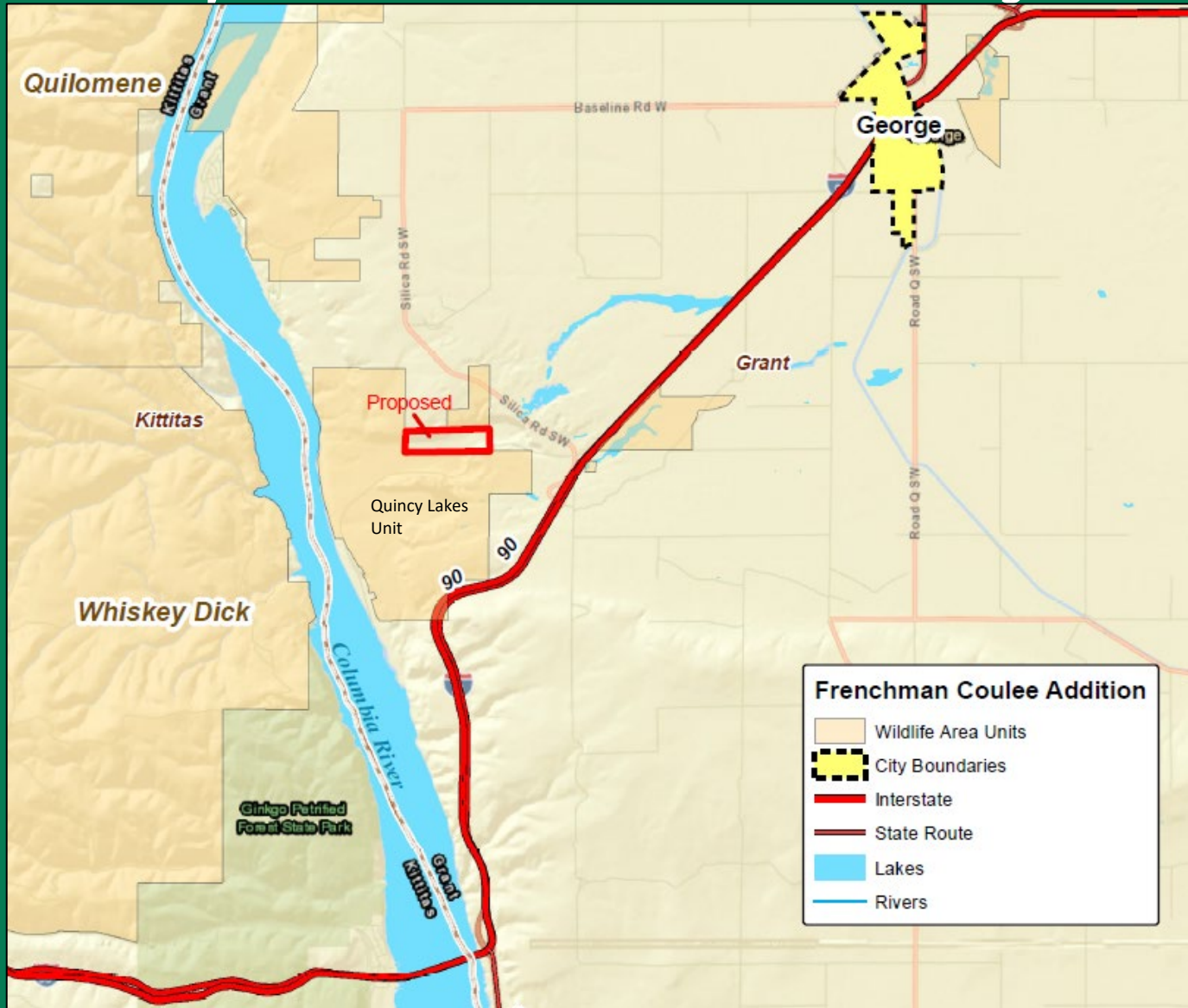
Designed to provide guidance on what land to buy and where to buy it in support of WDFW's [Mission](#) and dual mandate ([RCW 77.04.012](#)) to preserve, protect, perpetuate, and manage fish and wildlife species of the state, and provide recreational opportunities. Prior to acquiring a parcel of land, a deliberate process is used to ensure fee-title acquisition is better than any other tools available: conservation easement, voluntary protection, regulatory protection, ownership by a local land trust, another state agency or local entity, incentives, or education of landowner. Outcome...



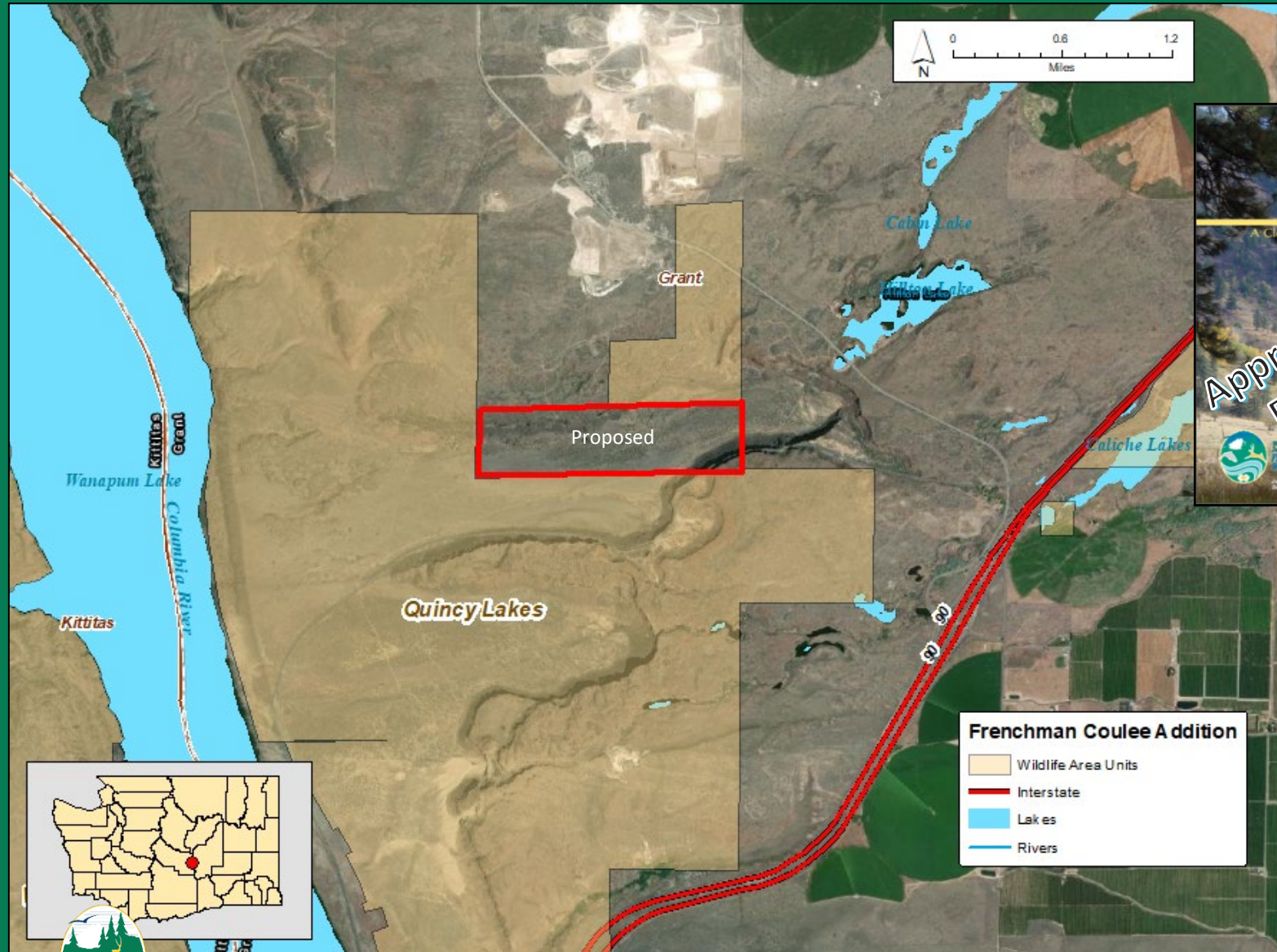
Proposed Acquisition, Frenchman Coulee Addition 159(+/-) Acres – Grant County Quincy Lakes Unit, Columbia Basin WLA, Region 2



Proposed Acquisition, Frenchman Coulee Addition 159(+/-) Acres – Grant County Quincy Lakes Unit, Columbia Basin WLA, Region 2



Proposed Acquisition, Frenchman Coulee Addition 159(+/-) Acres – Grant County Quincy Lakes Unit, Columbia Basin WLA, Region 2



- Appraised Value/
Purchase Price -
\$295,000
- Funding -
Managed Lands
Maintenance
Backlog Account –
AT2



Proposed Acquisition, Frenchman Coulee Addition 159(+/-) Acres – Grant County Quincy Lakes Unit, Columbia Basin WLA, Region 2



Questions

