



4. Land Transactions

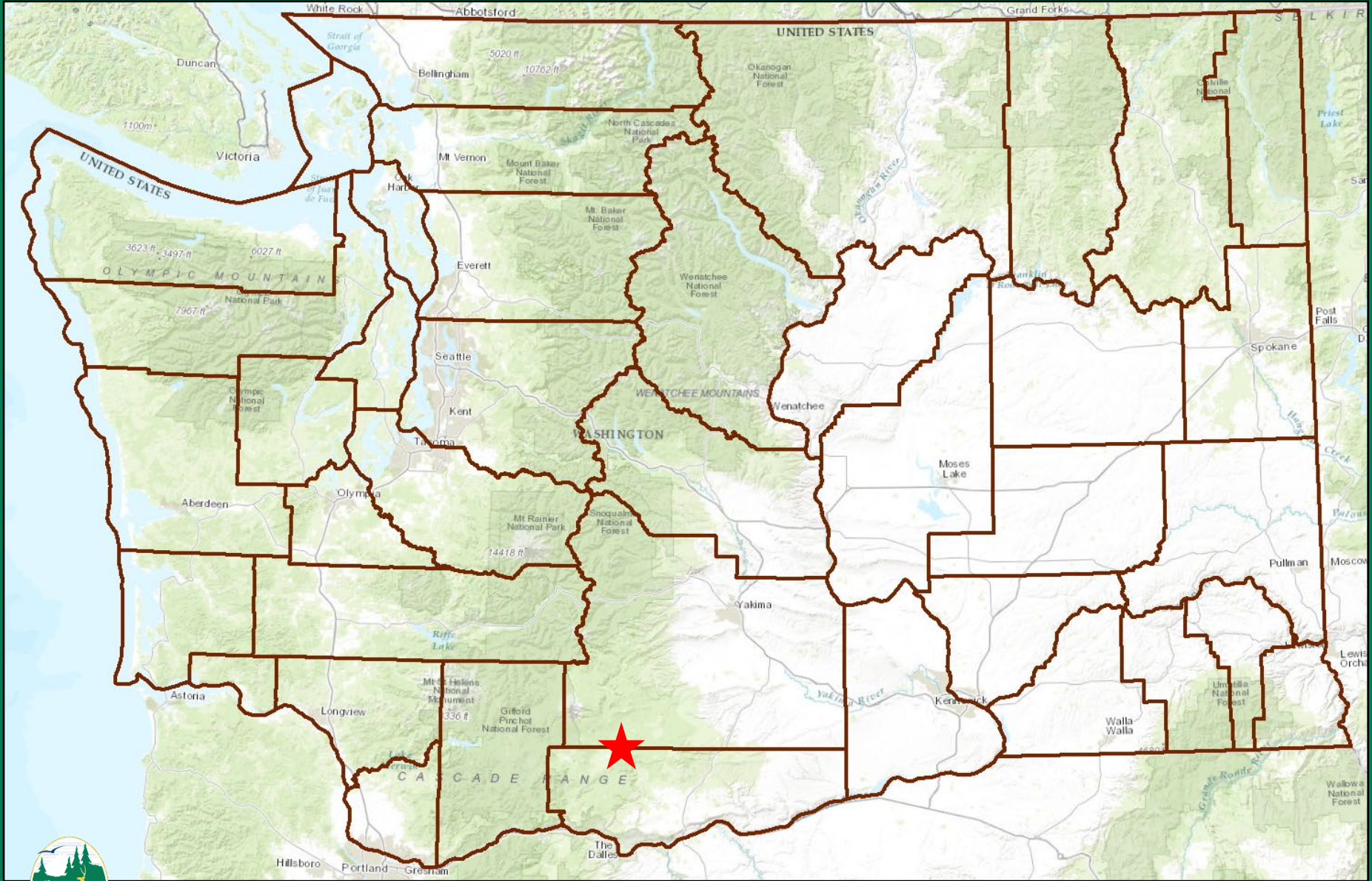
August 11, 2023

Commission Meeting

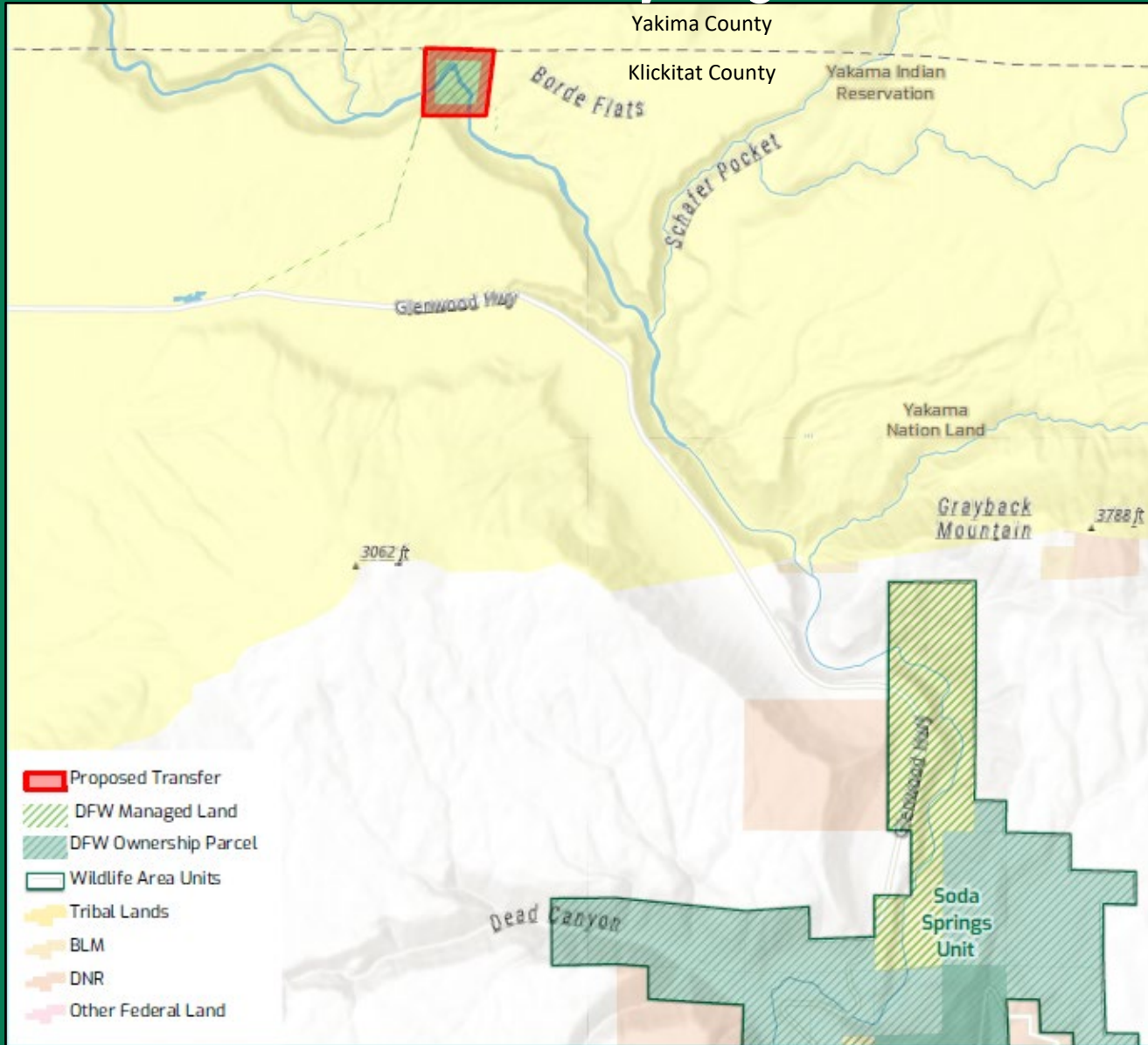
Karen Edwards, Real Estate Services Manager
Wildlife Program/Lands Division



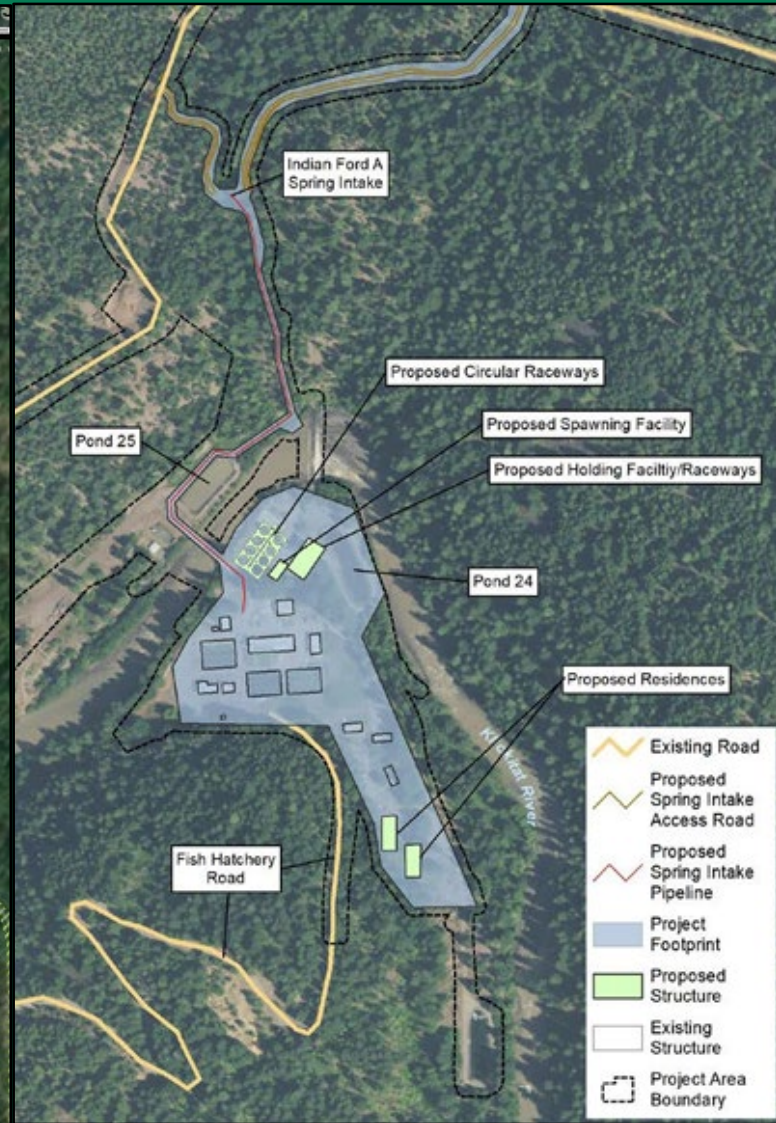
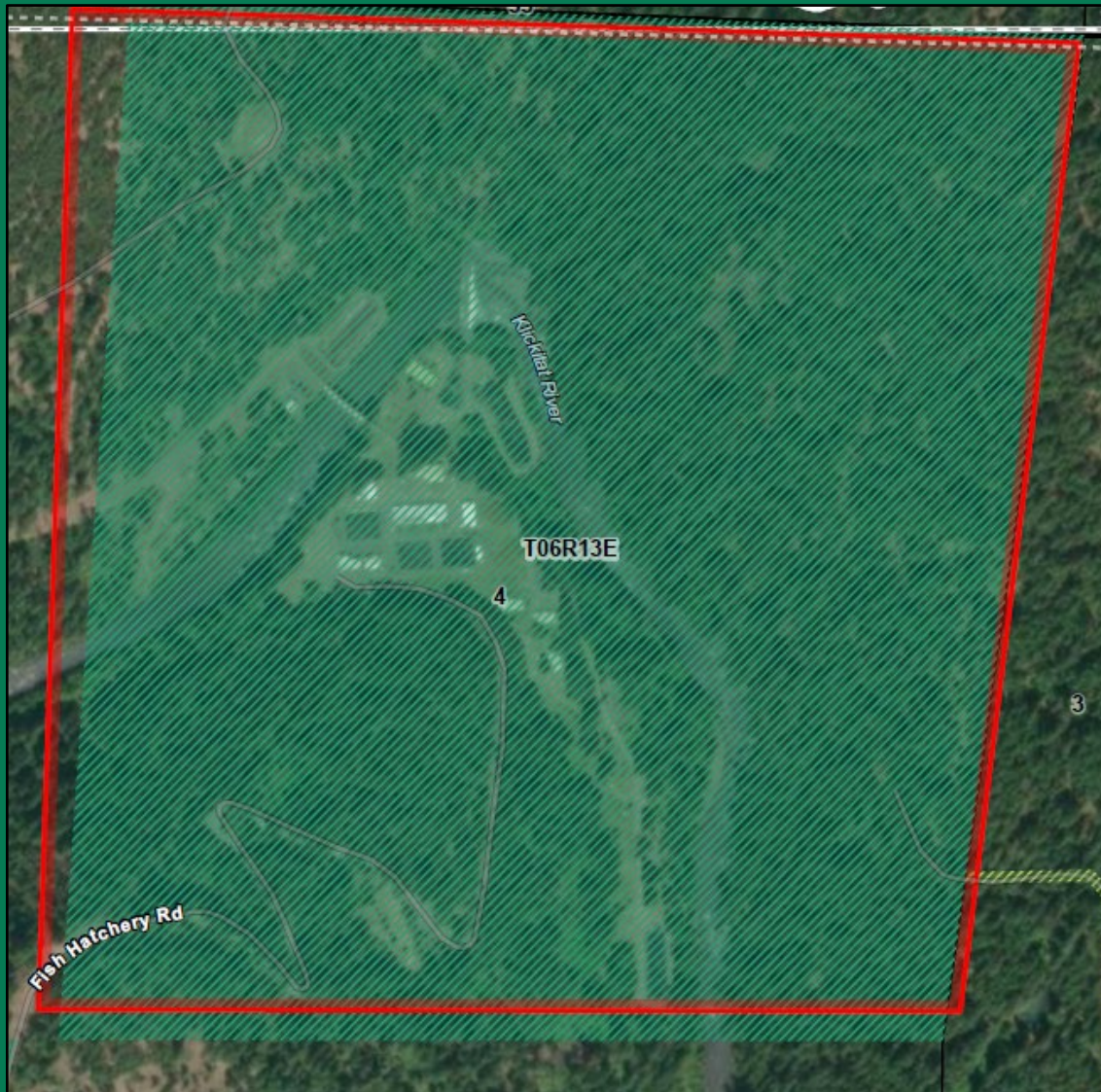
Proposed Transfer, 167(+/-) Acres, Klickitat County Klickitat Hatchery, Region 3




Proposed Transfer, 167(+/-) Acres, Klickitat County Klickitat Hatchery, Region 3



Proposed Transfer, 167(+/-) Acres, Klickitat County Klickitat Hatchery, Region 3



Proposed Transfer, 167(+/-) Acres, Klickitat County Klickitat Hatchery, Region 3

- ✓ [March 17th](#) - Commission briefing.
- ✓ SEPA Checklist and Threshold Determination.
 - ✓ Public comment period.
- ✓ [June 23rd](#) - Commission briefing of SEPA review and public comments received.
 - ✓ Additional public comment.
- [August 11th](#) - Commission decision. 
 - Additional public comment.
- If approved by Commission, Director and Attorney General certify to Governor, as required per [RCW 77.12.220](#).
- Conveyance via Governor's Quit Claim Deed.



Proposed Transfer, 167(+/-) Acres, Klickitat County Klickitat Hatchery, Region 3

- Yakama Nation manages the hatchery.
- Significant investment.
- Funding availability.
- Authorized and capable of operation and maintenance.
- Further objectives of the Yakima/Klickitat Fisheries Project.
- Meeting *U.S. v. Oregon* production targets.
- Produce fish!
- Fewer WDFW administrative and oversight costs.
- Klickitat River public access.
- Commercial timber right reservation.



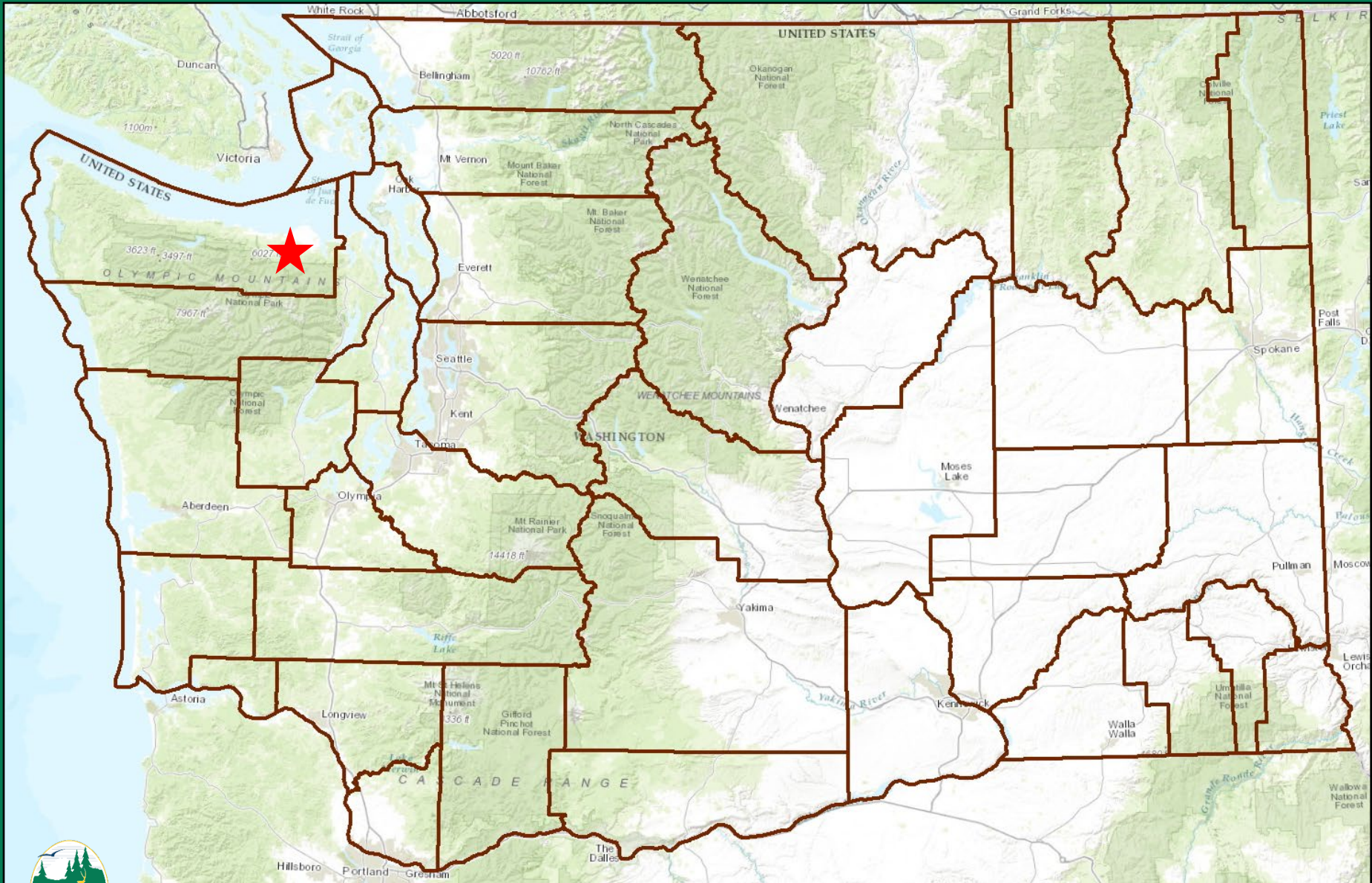
Questions



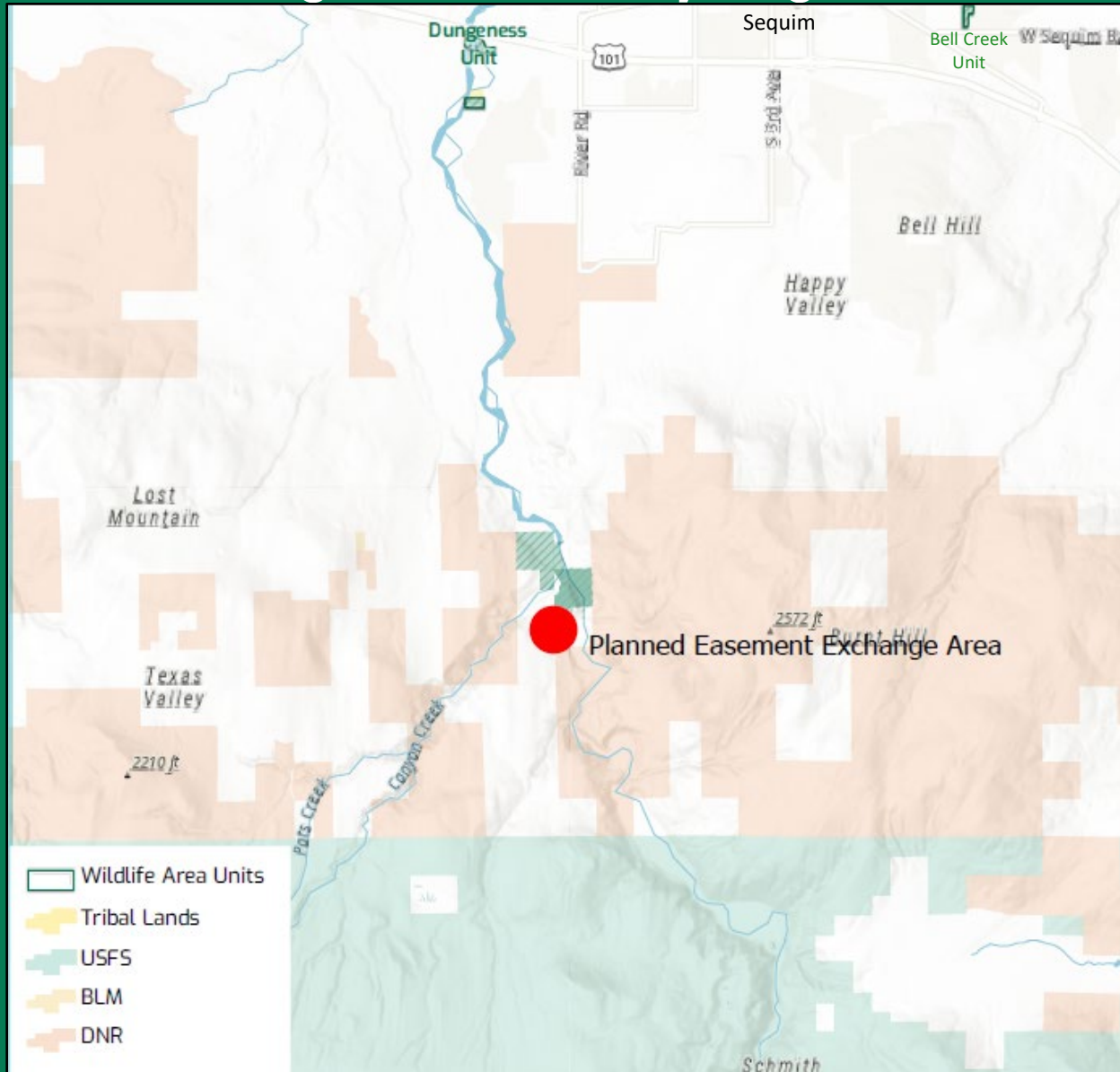
Photo Credit: Scott Fitkin



Proposed Easement Exchange, Clallam County Dungeness Hatchery, Region 6



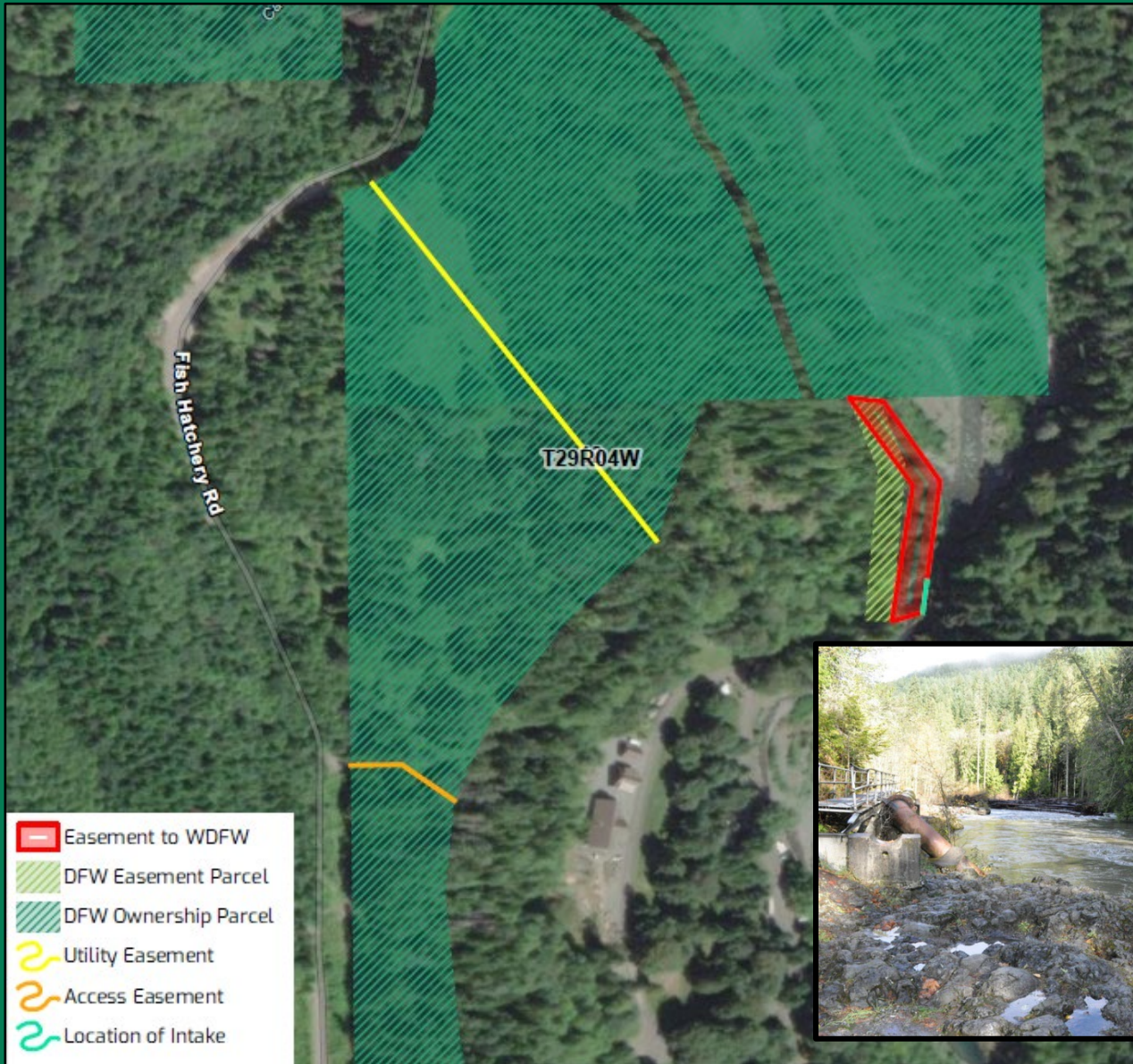
Proposed Easement Exchange, Clallam County Dungeness Hatchery, Region 6



Proposed Easement Exchange, Clallam County Dungeness Hatchery, Region 6



Proposed Easement Exchange, Clallam County Dungeness Hatchery, Region 6



Proposed Easement Exchange, Clallam County Dungeness Hatchery, Region 6

- Corrects 1963 easement location.
- Secures actual location of water intake.
- Construction, operation, and maintenance of the water intake.
- No interruption or need to relocate.
- Equal value exchange.
- Private driveway and underground utilities over hatchery land.
- Both party's benefit.
- Good neighbors.



Questions



Photo Credit: Scott Fitkin

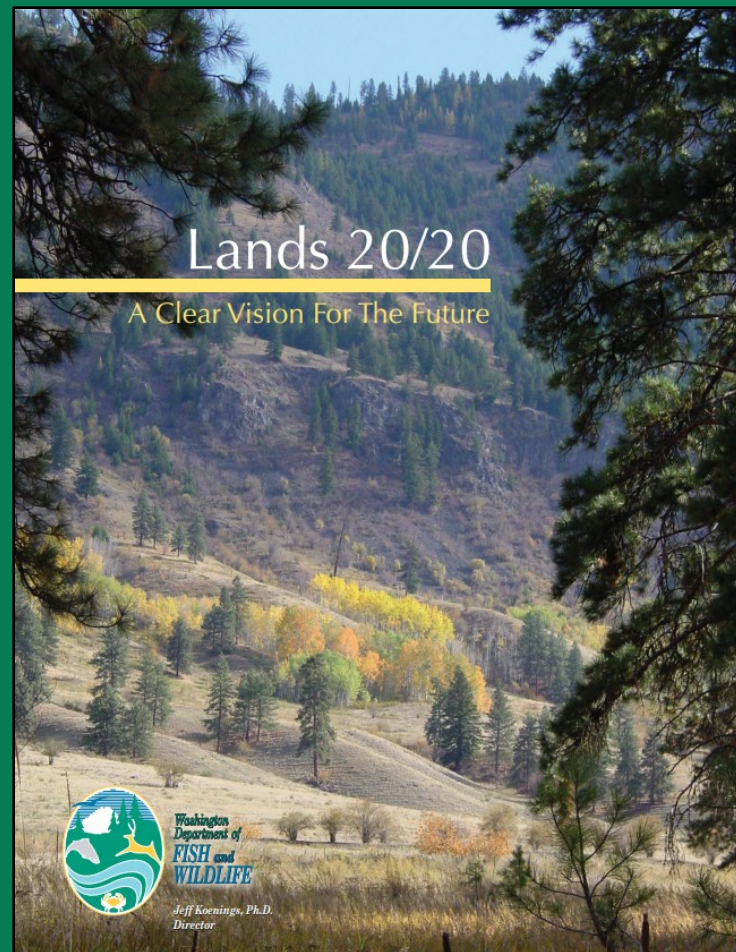




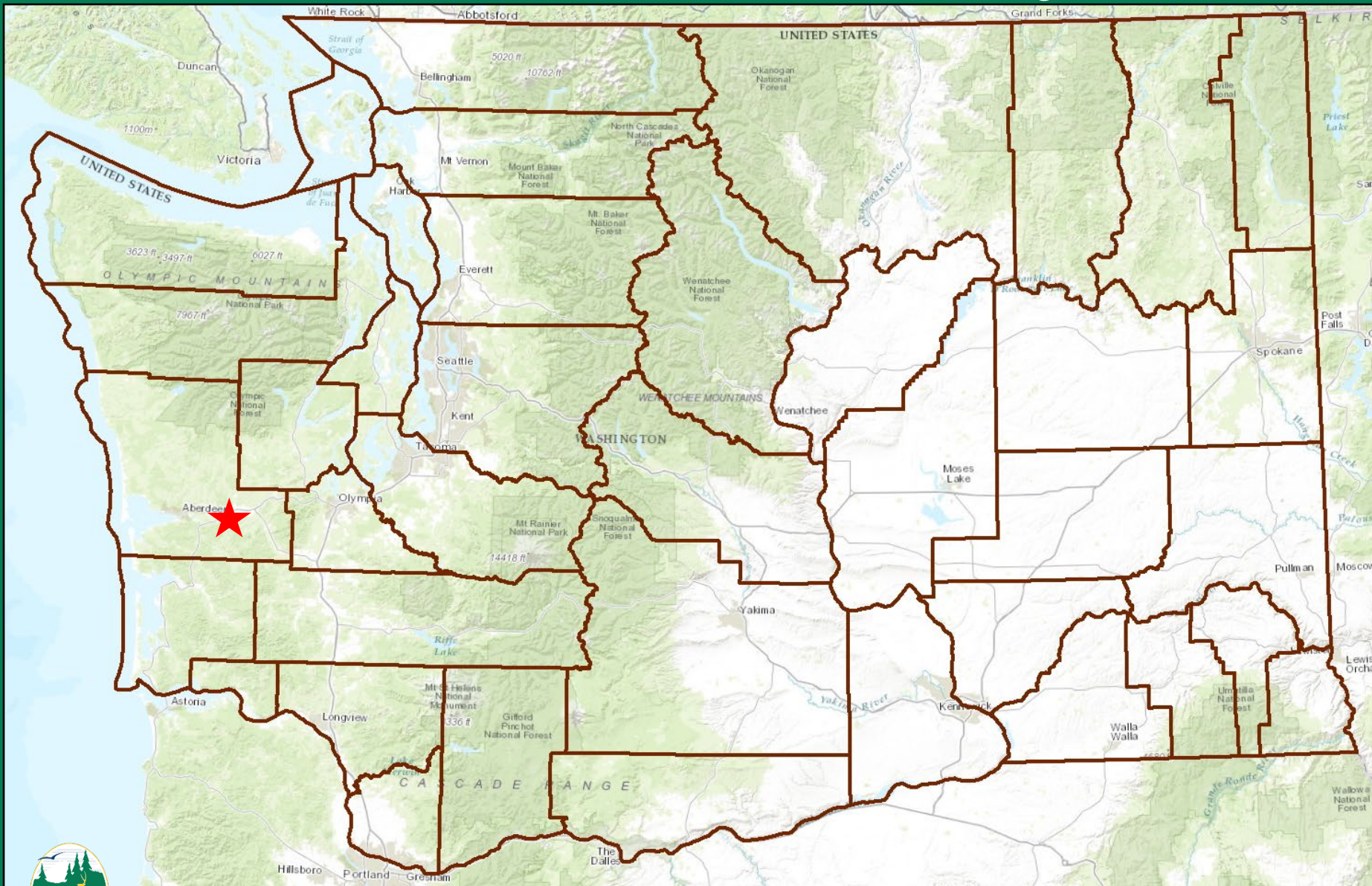
Strategic Acquisition Priorities for Land Acquisitions

[Land acquisitions](#) | [Washington Department of Fish & Wildlife](#)

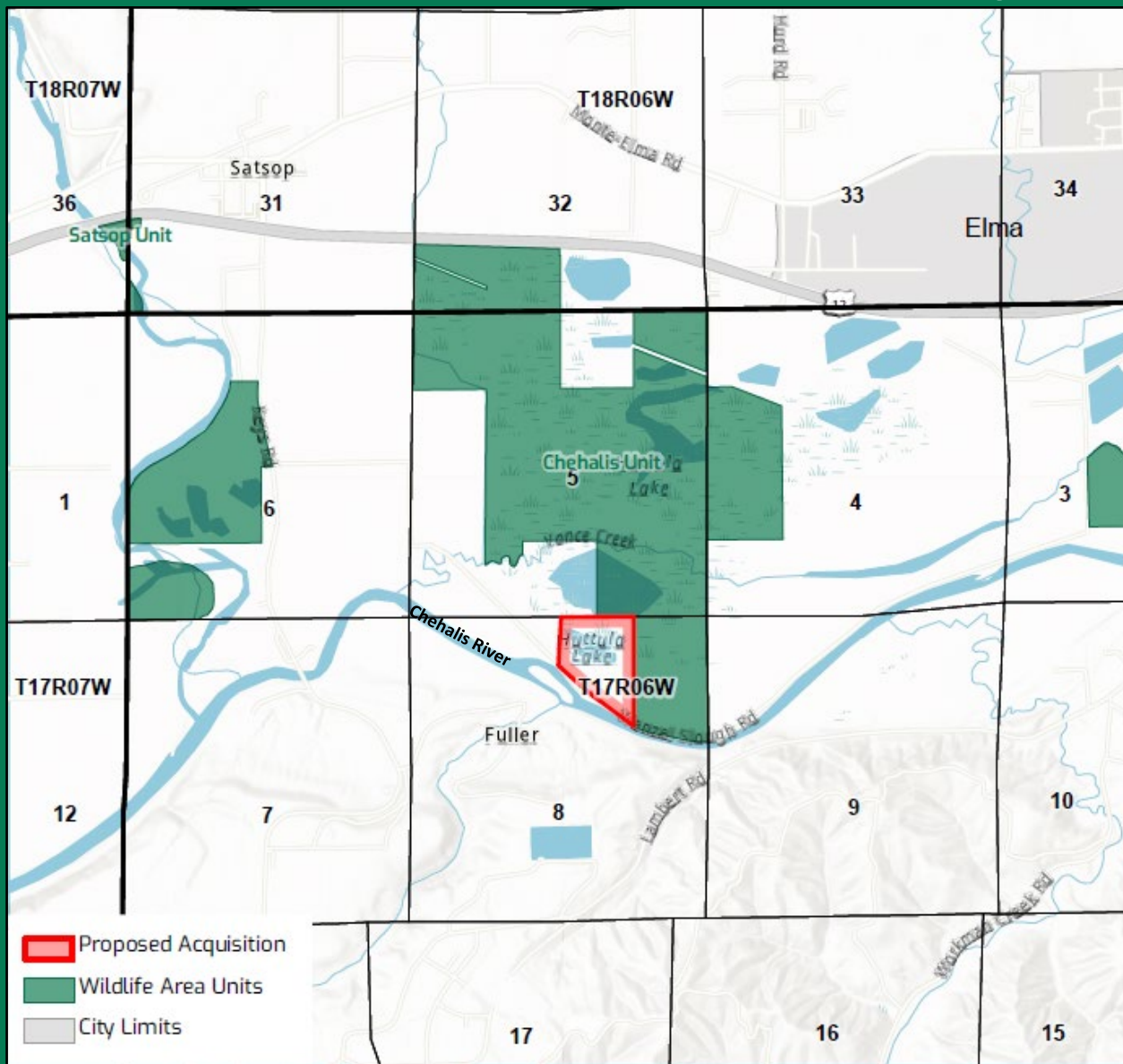
Designed to provide guidance on what land to buy and where to buy it in support of WDFW's [Mission](#) and mandate ([RCW 77.04.012](#)) to preserve, protect, perpetuate, and manage fish and wildlife species of the state, and provide recreational opportunities. Prior to acquiring a parcel of land, a deliberate process is used to ensure fee-title acquisition is better than any other tools available: conservation easement, voluntary protection, regulatory protection, ownership by a local land trust, another state agency or local entity, incentives, or education of landowner. Outcome...



Proposed Acquisition, 40(+/-) Acres, Grays Harbor County Chehalis Unit, Chehalis Wildlife Area, Region 6



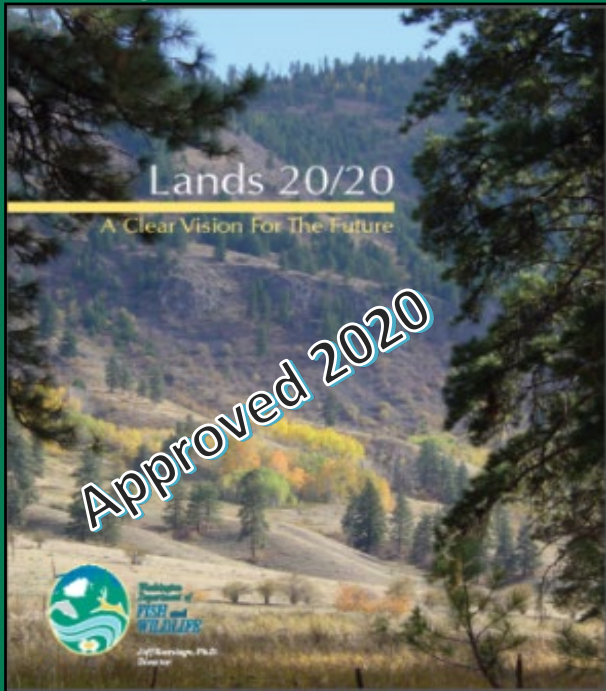
Proposed Acquisition, 40(+/-) Acres, Grays Harbor County Chehalis Unit, Chehalis Wildlife Area, Region 6



Proposed Acquisition, 40(+/-) Acres, Grays Harbor County Chehalis Unit, Chehalis Wildlife Area, Region 6



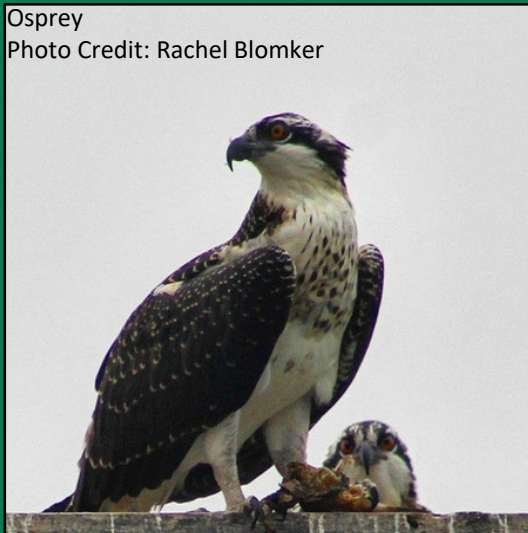
Proposed Acquisition, 40(+/-) Acres, Grays Harbor County Chehalis Unit, Chehalis Wildlife Area, Region 6



Purchase Price: \$150,000



Proposed Acquisition, 40(+/-) Acres, Grays Harbor County Chehalis Unit, Chehalis Wildlife Area, Region 6



Osprey
Photo Credit: Rachel Blomker



Wood duck
Photo Credit: Diane Tilton



Shorebirds
Photo Credit: Diane Tilton



Trumpeter swan
Photo Credit: National Park Service



Great blue heron
Photo Credit: WDFW Archives



Olympic mudminnow
Photo Credit: U.S. Fish & Wildlife Service



Proposed Acquisition, 40(+/-) Acres, Grays Harbor County Chehalis Unit, Chehalis Wildlife Area, Region 6

Photo Credit: Rachel Blomker



Photo Credit: Mac Graff



Photo Credit: Niki Desautels



Photo Credit: Niki Desautels



Photo Credit: Rachel Blomker



Questions



Photo Credit: Scott Fitkin

