

#20-1640 Pygmy Rabbit Habitat Enhancement

Sagebrush Flat Unit
Sagebrush Wildlife Area

Columbus
Bas
Sun Lakes Wildlife Area

High Hill

Soap Lake

0 1.5 3mi
1:288,895

Lynch Coulee

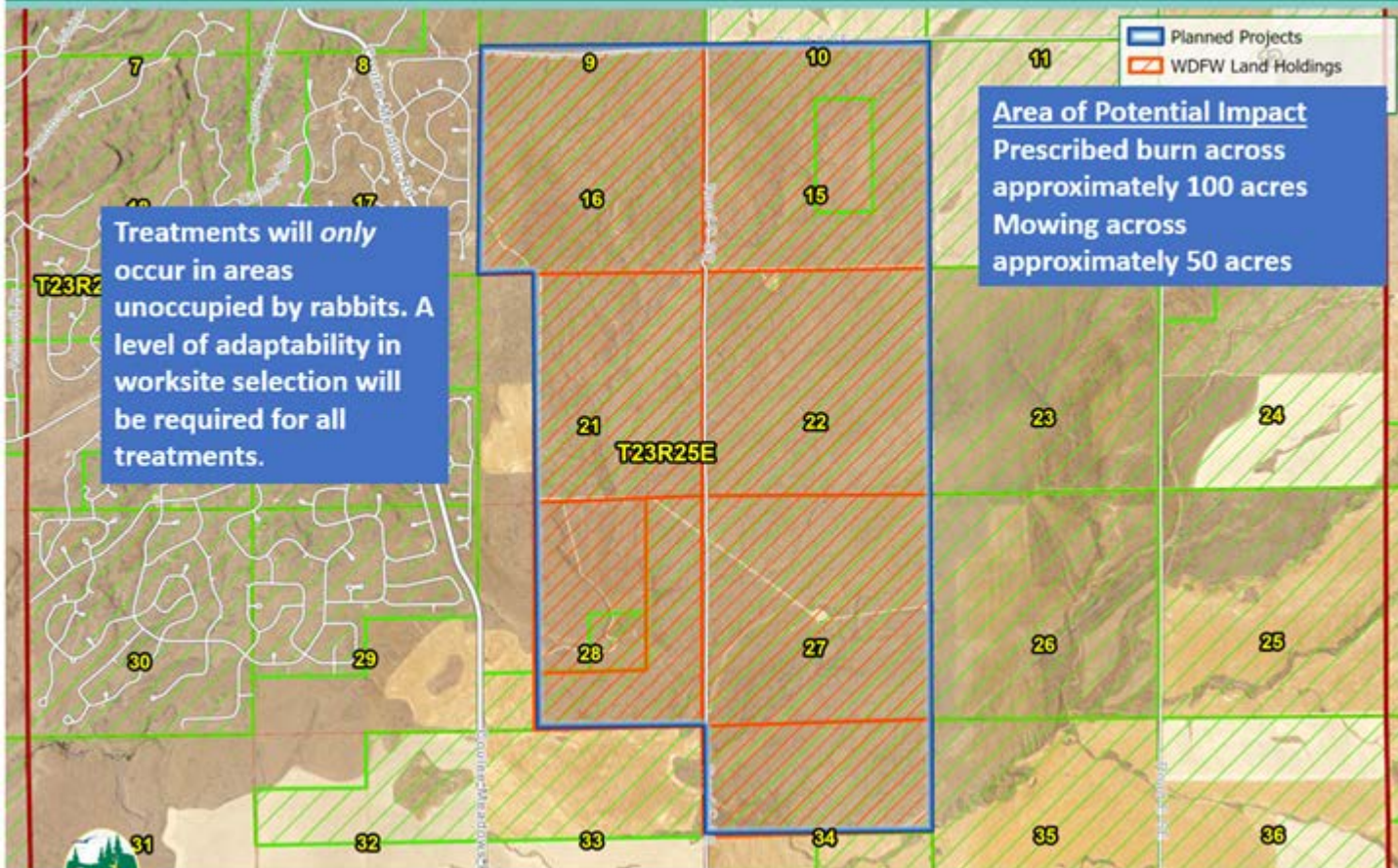
Bee Hill

Ephrata

WDC

#20-1640 - Pygmy Rabbit Habitat Enhancement

Site Development Plan



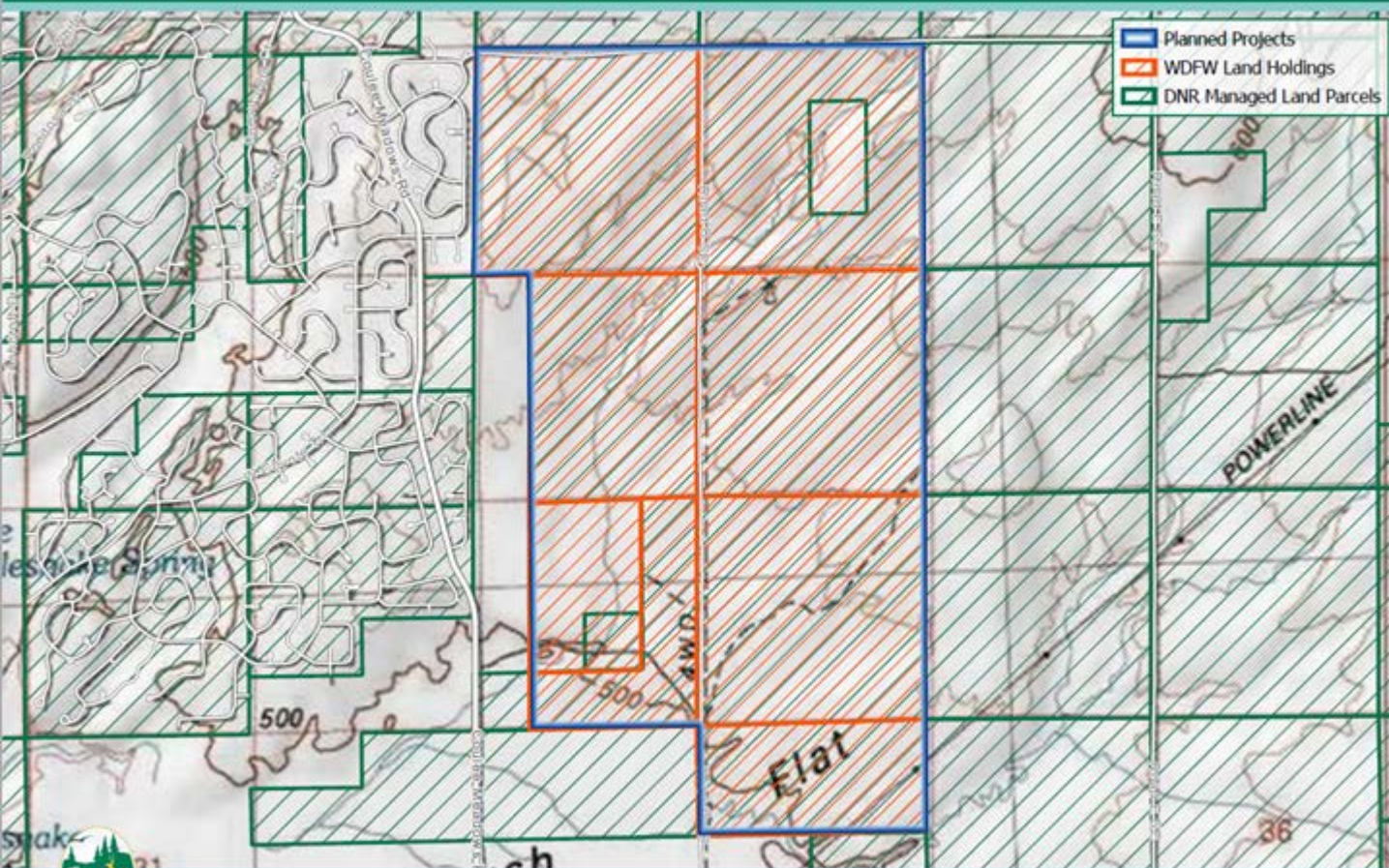
Treatments will *only* occur in areas unoccupied by rabbits. A level of adaptability in worksite selection will be required for all treatments.

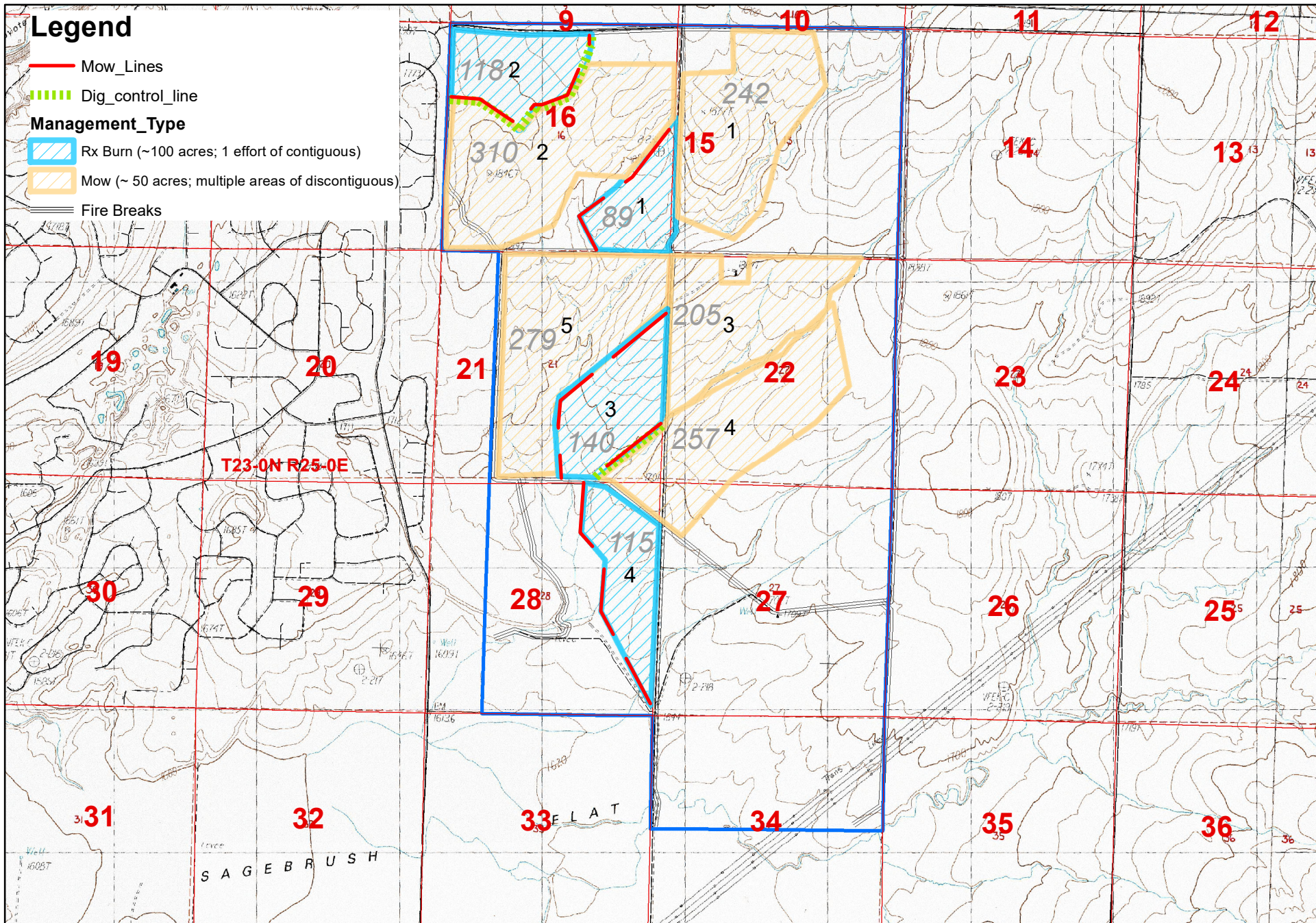
Area of Potential Impact
Prescribed burn across approximately 100 acres
Mowing across approximately 50 acres



#20-1640 - Pygmy Rabbit Habitat Enhancement

Area of Potential Effect Map





0 0.35 0.7 1.4 Miles

