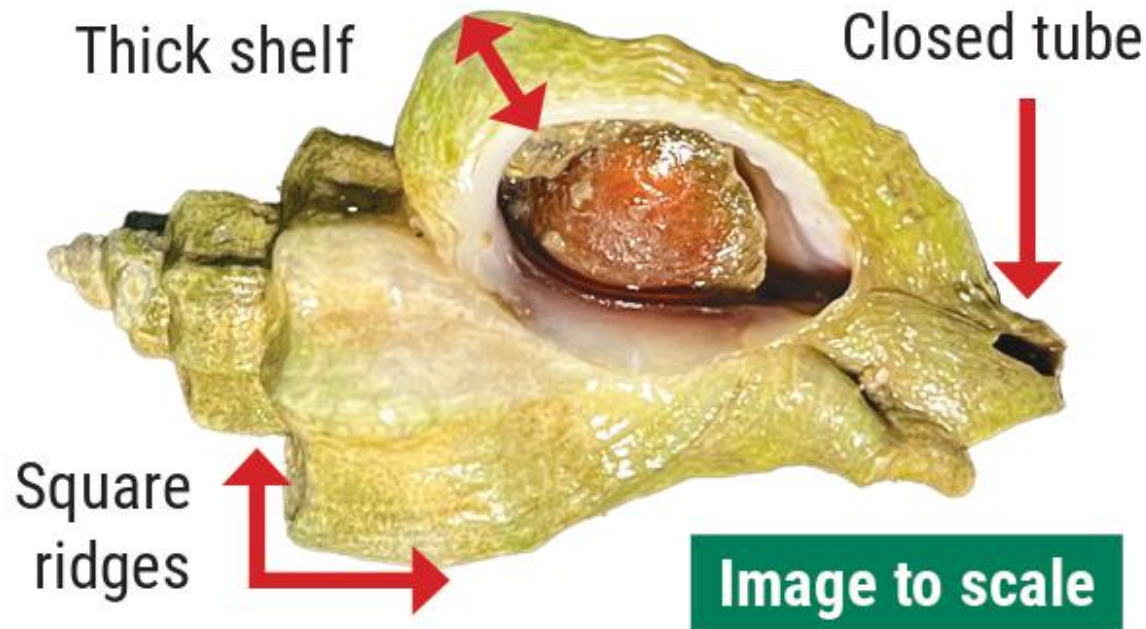


Report Invasive Japanese Oyster Drills



Japanese oyster drills are predatory snails that were accidentally introduced to Puget Sound in 1924.



Scan our QR code to learn more



Eggs have folded edges like a taco.

1. See if you're in a known drill area.
2. Use the reporting link for all sightings.



[wdfw.wa.gov/
japanese-oyster-
drill](https://wdfw.wa.gov/japanese-oyster-drill)

