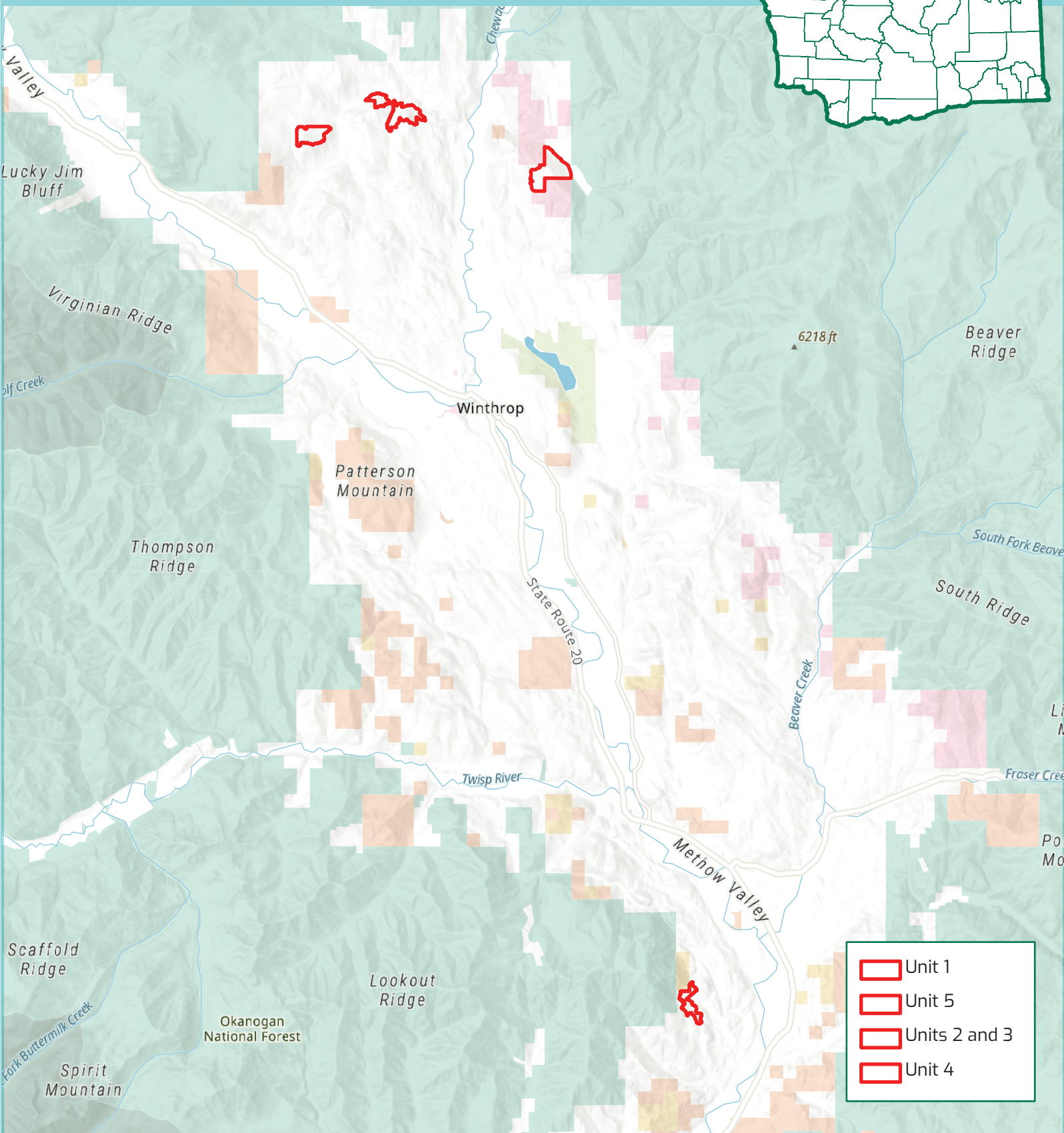
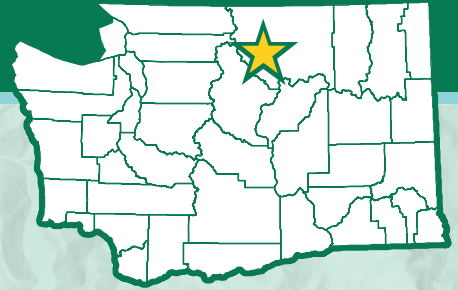






Overview

SEPA

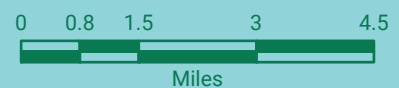
Methow Forest Restoration



-  Unit 1
-  Unit 5
-  Units 2 and 3
-  Unit 4



Department of Fish and Wildlife

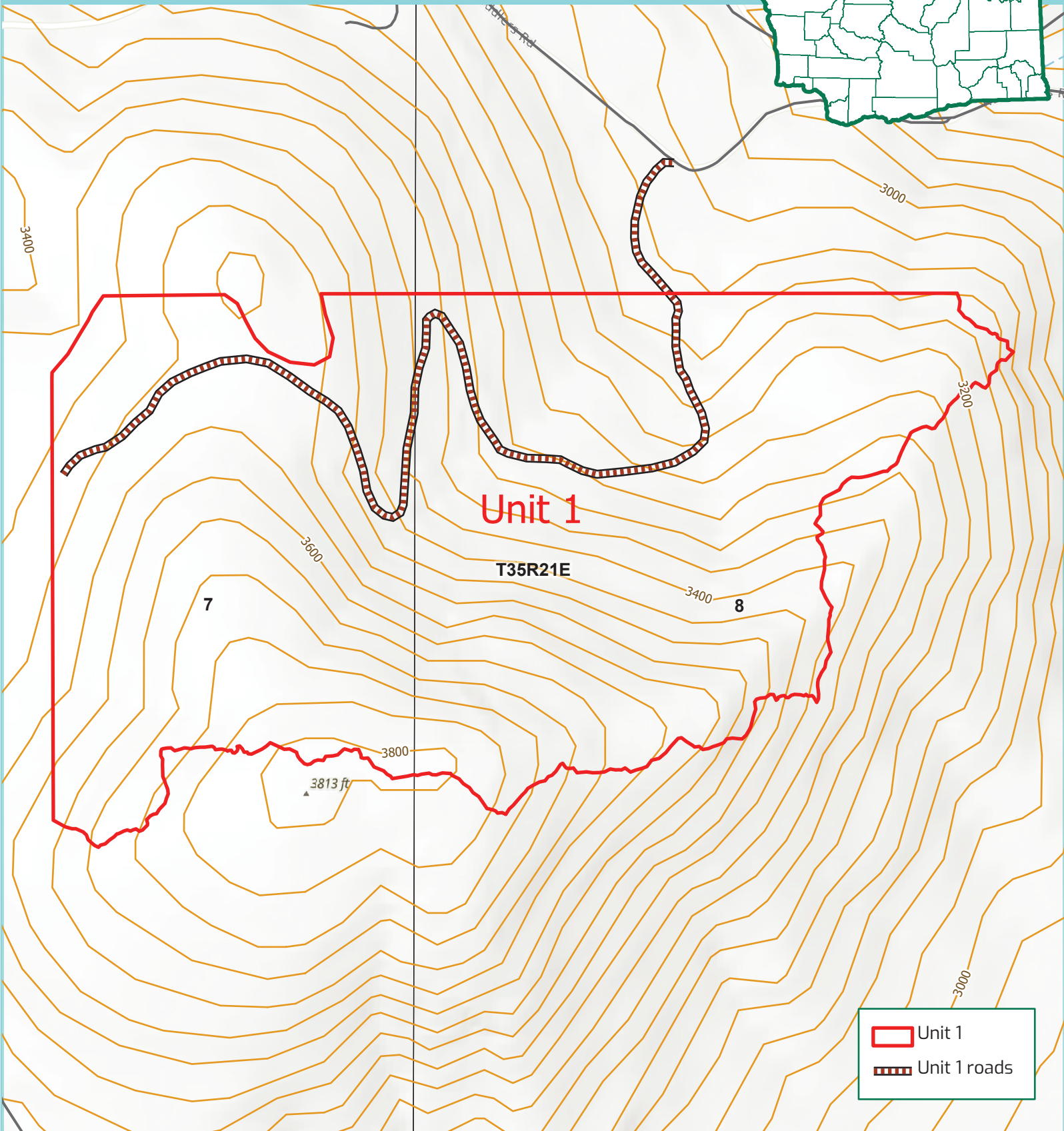
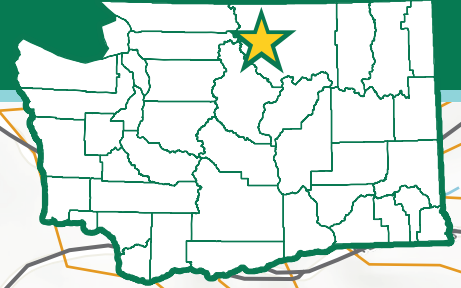


This product is for informational purposes and may not have been prepared for or be suitable for legal, engineering, or surveying purposes. It does not represent an on-the-ground survey and represents only the approximate relative location of property boundaries.

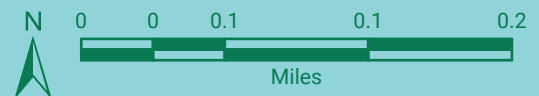
Unit 1

SEPA

Methow Forest Restoration



Department of Fish and Wildlife

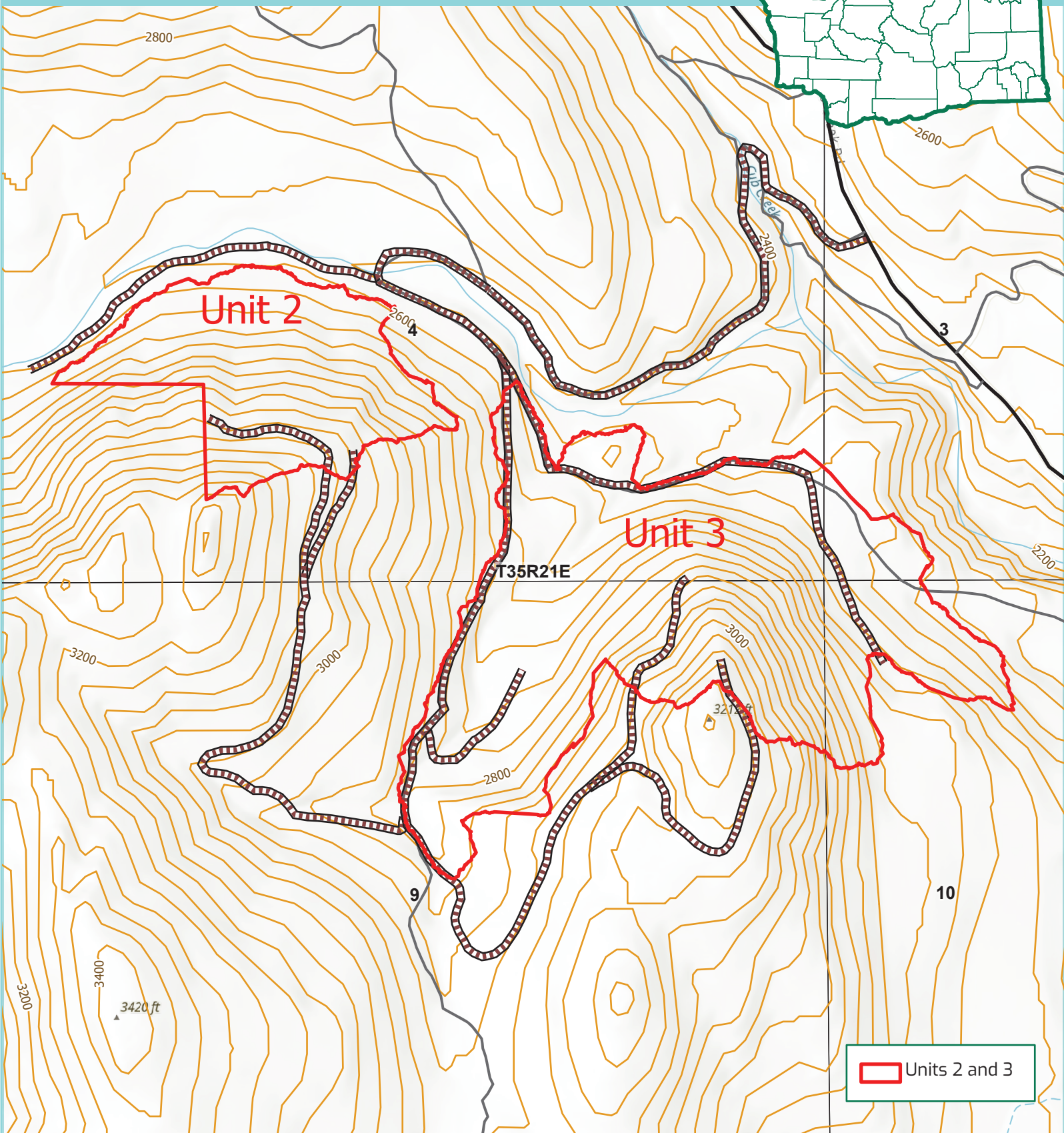
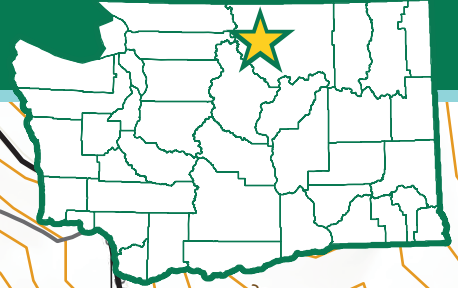


This product is for informational purposes and may not have been prepared for or be suitable for legal, engineering, or surveying purposes. It does not represent an on-the-ground survey and represents only the approximate relative location of property boundaries.

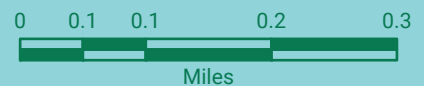
Unit 2 and 3

Methow Forest Restoration

SEPA



Department of Fish and Wildlife

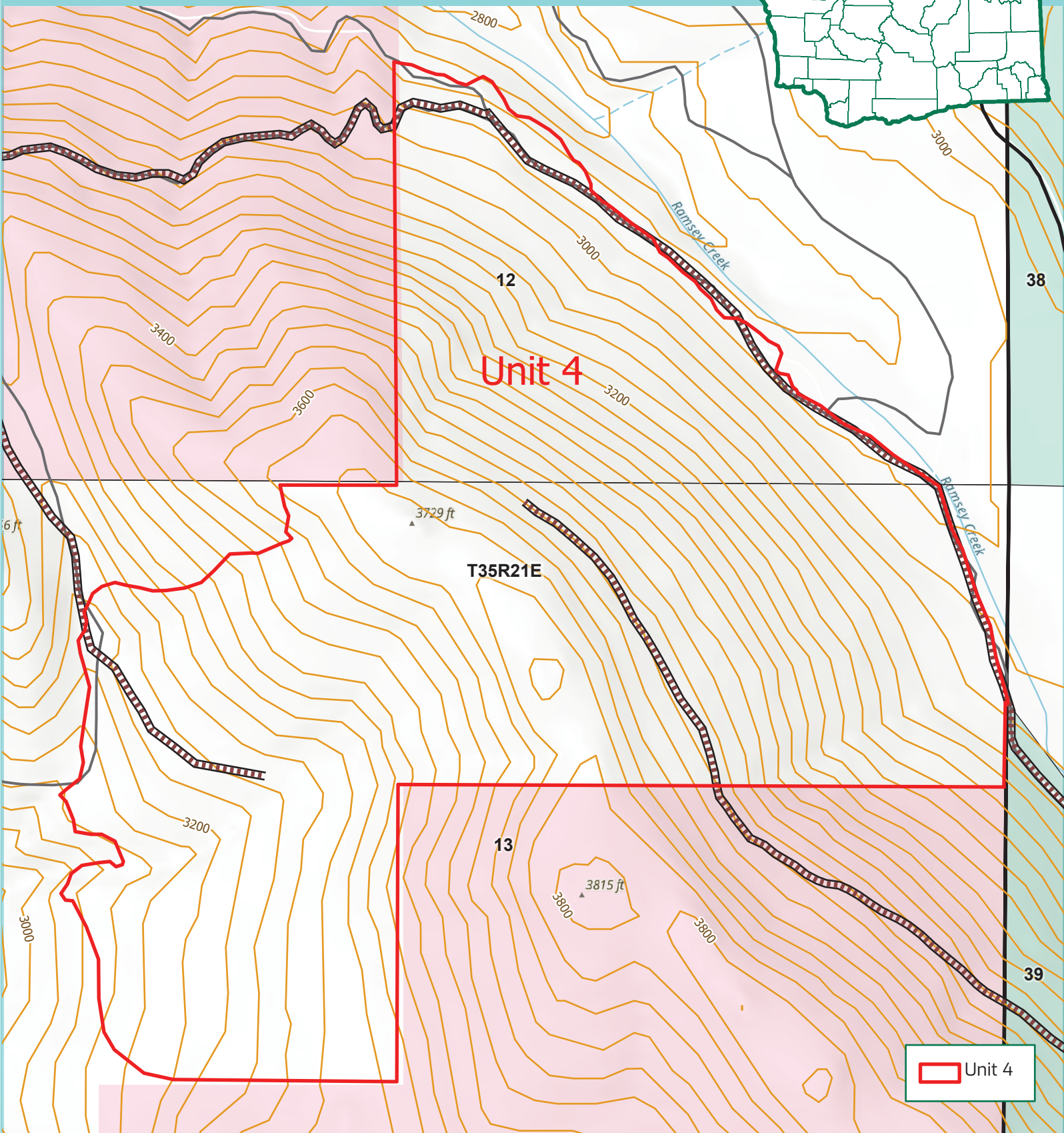
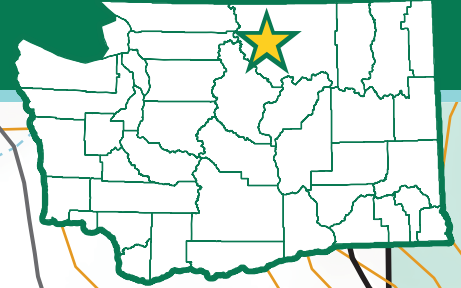


This product is for informational purposes and may not have been prepared for or be suitable for legal, engineering, or surveying purposes. It does not represent an on-the-ground survey and represents only the approximate relative location of property boundaries.

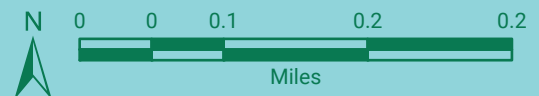
Unit 4

SEPA

Methow Forest Restoration



Department of Fish and Wildlife

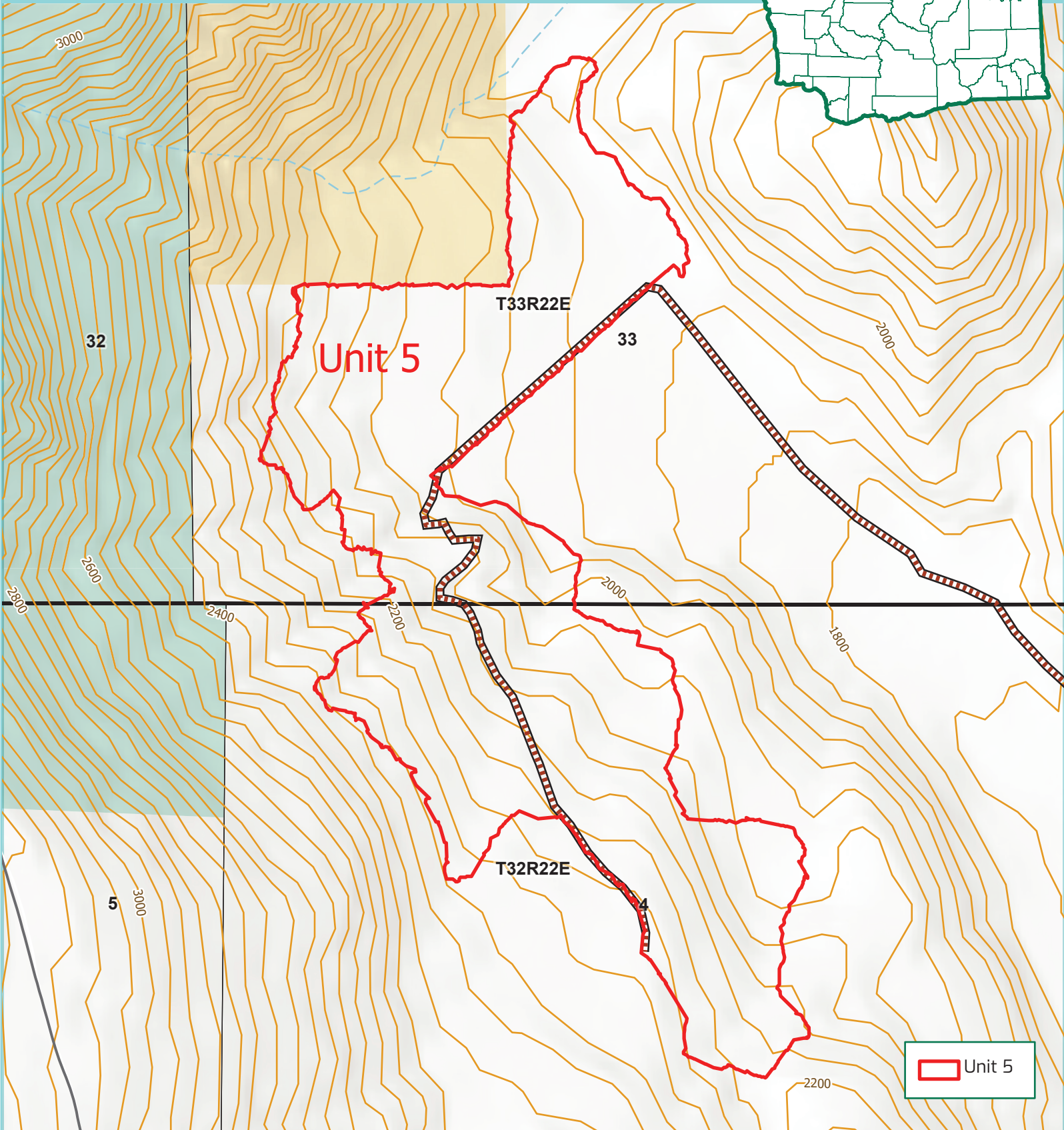
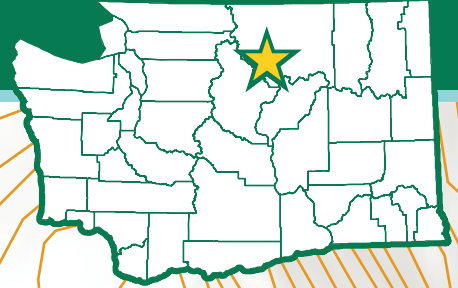


This product is for informational purposes and may not have been prepared for or be suitable for legal, engineering, or surveying purposes. It does not represent an on-the-ground survey and represents only the approximate relative location of property boundaries.

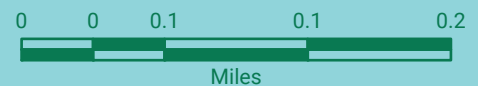
Unit 5

SEPA

Methow Forest Restoration



Department of Fish and Wildlife



This product is for informational purposes and may not have been prepared for or be suitable for legal, engineering, or surveying purposes. It does not represent an on-the-ground survey and represents only the approximate relative location of property boundaries.