

# L.T. Murray Wildlife Area Management Plan

**Holly English**

Wildlife Area and Recreation Planner, Wildlife Program

**Hannah Bates**, Region 3 Assistant Wildlife Program

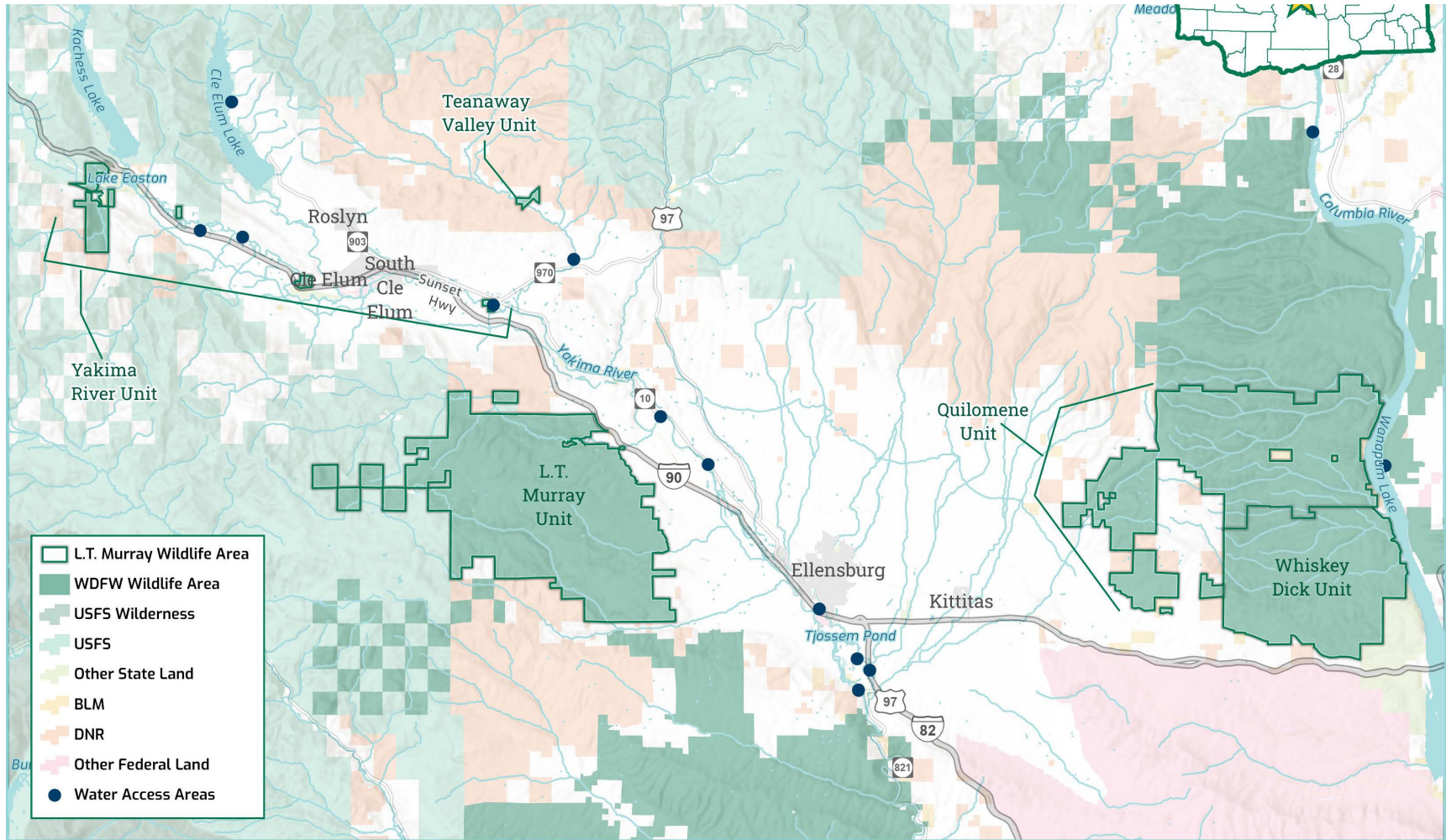
Manager/Lands Operations



# Washington Department of Fish and Wildlife Wildlife Areas



The L.T. Murray wildlife area consists of 119,395 acres across five units within Kittitas County and is the 2<sup>nd</sup> largest WLA in the state.



# Why do we develop wildlife area management plans?

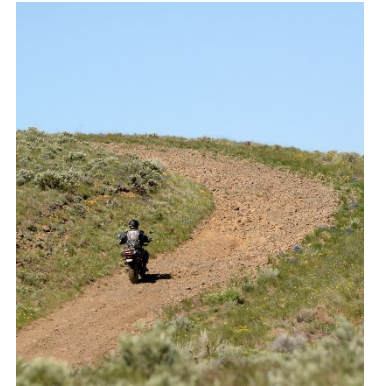
- Sets vision and guides management over the next ten years
- Incorporates tribal and stakeholder input and a comprehensive public outreach process
- Ensures lands are managed consistent with mission and funding obligations
- Identifies priority goals and objectives and performance measures
- Integrates fish, habitat and wildlife programs



The L.T. Murray WLA contains 11 priority habitats, and 87 species of greatest conservation need.



# Recreation



The L.T. Murray Wildlife Area offers a rich array of recreational experiences and includes over 255 miles of roads and trails, and multiple access sites to rivers and streams.



# L.T. Murray WLA Planning Team



We envision a wildlife area with healthy and varied habitats – from the shrubsteppe of the Columbia Plateau to the forests of the East Cascades – that support a diversity of fish and wildlife, and where sustainable wildlife and nature-based recreational opportunities are enjoyed with respect for the natural and cultural resources of the land.





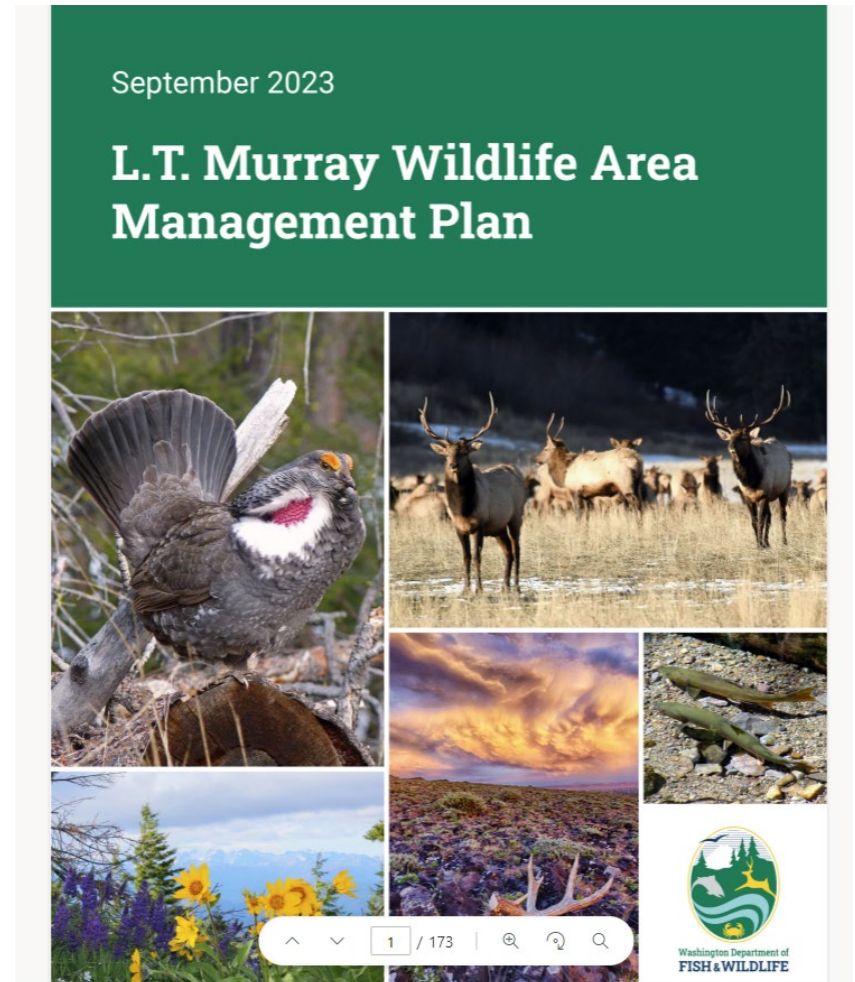
# Wildlife Area Advisory Committee

Andrea Crawford	Evergreen Mountain Bike Alliance
Bill Essman	Kittitas County Field and Stream Club
Bill Wilson	Rocky Mountain Elk Foundation
Justin Hyland	Rocky Mountain Elk Foundation
Craig Schnebly	Mule Deer Foundation / ADA hunting & recreation
Jason Ridlon	Backcountry Horsemen
Jason Scribner	Kittitas Audubon
Dick Carkner	Kittitas Audubon
John O'Brien	Winter Recreation representative
Jennifer Galbraith	Wild Horse Wind Farm
Joe Smith	Department of Natural Resources (former member)
Marc Eylar	Kittitas County Noxious Weed Control Board/PLAC
Robert Kruse	CRM/ landowner/ Sportsman/ Conservationist
Scott Nicolai	Hiker/ Conservationist
Kevin Clements	WA Ruffed Grouse Society
Skip Frans	NPNW4WDA Region 4 Director
Leon Ganuelas	Yakama Nation – Tribal Partner
Nicki Pasi	Mountains to Sound Greenway Trust
Barbara Penniston	Backcountry Horsemen of WA/Kittitas Valley Trail Riders
Brandon Rossi	Yakama Nation Fisheries
Jason Emsley	Department of Natural Resources
Ryan Stingley	Working Lands Representative
Marc Toenyan	Northwest Motorcycle Association
Jennifer Wapenski	Project Upland
Bridget Wood	Mule Deer Foundation



# Highlights

- An expanded wildlife area advisory committee representing a diversity of conservation and recreation organizations
- Climate resiliency strategies
- Early and frequent consultation with the Yakama Nation throughout the process
- A proactive fire management strategy integrated into forest management.
- Prioritization of objectives to aid implementation



BENEFIT/IMPACT

<p>Aspirational. Seek opportunities for funding.</p> <p><b>HIGH IMPACT/LOW URGENCY</b></p>	<p>Highest priority. Seek funding/capacity asap. Add to annual workplan.</p> <p><b>HIGH IMPACT/HIGH URGENCY</b></p>
<p>Lowest priority. Consider dropping.</p> <p><b>LOW IMPACT/LOW URGENCY</b></p>	<p>Assess risk. Consider elevating.</p> <p><b>LOW IMPACT/HIGH URGENCY</b></p>

URGENCY





# Priority Goals and Objectives

# Species

Goal: manage for species diversity.

Objective: protect wildlife movement corridors, core habitat, and climate refugia across the landscape to afford access to the wildlife area.



# Species

Goal: maintain and restore native fish populations.

Objective: collaborate with the Yakama Nation on species recovery and reintroduction efforts of bull trout, coho, and summer steelhead in the upper Yakima Basin.



# Habitat

Goal: protect and restore native shrubsteppe habitat that supports a diversity of species.

Objective: implement post-fire restoration on burned shrubsteppe.



# Habitat

Goal: restore natural stream processes, including channel migration, floodplain connection, natural vegetation, and large woody material recruitment.

Objective: monitor stream restoration projects before and after implementation.





# Cultural Resources

Goal: manage wildlife area lands with consideration to tribal history across the landscape.

Objective: Protect tribal treaty rights while carefully evaluating and considering management impacts to traditional hunting and gathering sites.



# Recreation

Goal: Develop and manage a sustainable system of travel that protects habitat, wildlife, and cultural resources.

Objective: Develop and implement road improvements strategy using a tiered approach compatible with RMAP standards to address habitat damage.



Questions?

