

Washington Department of Fish and Wildlife Region 5 Overview

Rian Sallee
Region 5 Director, Southwest





Region 5 Ridgefield Office

5525 S 11th St., Ridgefield, WA 98642



Region 5 Highlights

- Diverse landscapes and ecosystems
 - Western and eastern habitat
- Unique fish and wildlife populations
- Popular hunting, fishing, and wildlife viewing opportunities



Fall on the Klickitat River



Shillapoo Wildlife Area



Spring on the Kalama River





Wildlife Program

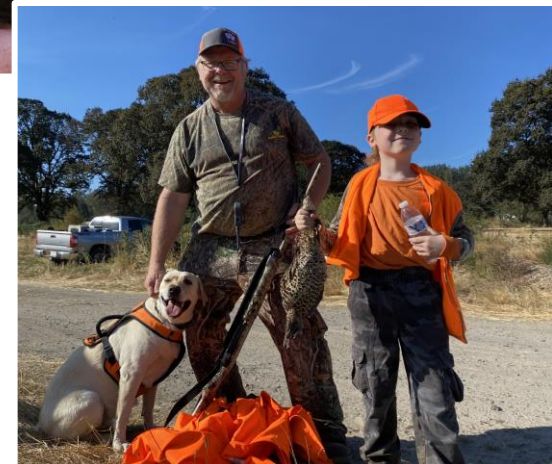
Wildlife Program Priorities

- Management and recovery of game, endangered, and threatened species
- Wildlife Conflict Management
- Private Lands Access
- Wildlife Areas
- Access Areas



Northwestern
Pond Turtle
research

Pheasant
hunting on
private lands





Fish Program

Fish Program Priorities

- Tributary fishery management
- Salmon and steelhead population monitoring
- Hatchery operations
- Partner engagement
- Project highlight: Toutle Fish Collection Facility (TFCF)



Toutle Fish Collection Facility (TFCF)

- Partnership with US Army Corp of Engineers (USACE)
- Update WDFW's Toutle Fish Collection Facility
- Goal: Improve collection efficiency and transport survival
- Construction scheduled for 2026-27

Figure ES-1. Aerial View of the FCF Showing Major Components



US Army Corps
of Engineers®
Portland District

DESIGN DOCUMENTATION REPORT NO. 20
TOUTLE RIVER FISH COLLECTION FACILITY
MOUNT ST. HELENS PROJECT
NORTH FORK TOUTLE RIVER, WASHINGTON

Toutle River Fish Collection Facility Modifications



60 Percent DDR
February 2024





Columbia River Management Unit

CRMU Priorities

- Fisheries management in the Columbia River mainstem
- Fisheries monitoring, research, and stock assessment
- Northern Pikeminnow Program
- Involvement with mainstem hydro systems and agreements



New Educational Resources

- Frequently updated webpage:
 - [Columbia River fisheries and management](#)
- Two new short videos on YouTube:
 - [A balancing act: Managing sustainable fisheries in the Columbia River](#)
 - [Science, sharing, and sustainability: demystifying the annual Columbia River salmon management cycle](#)

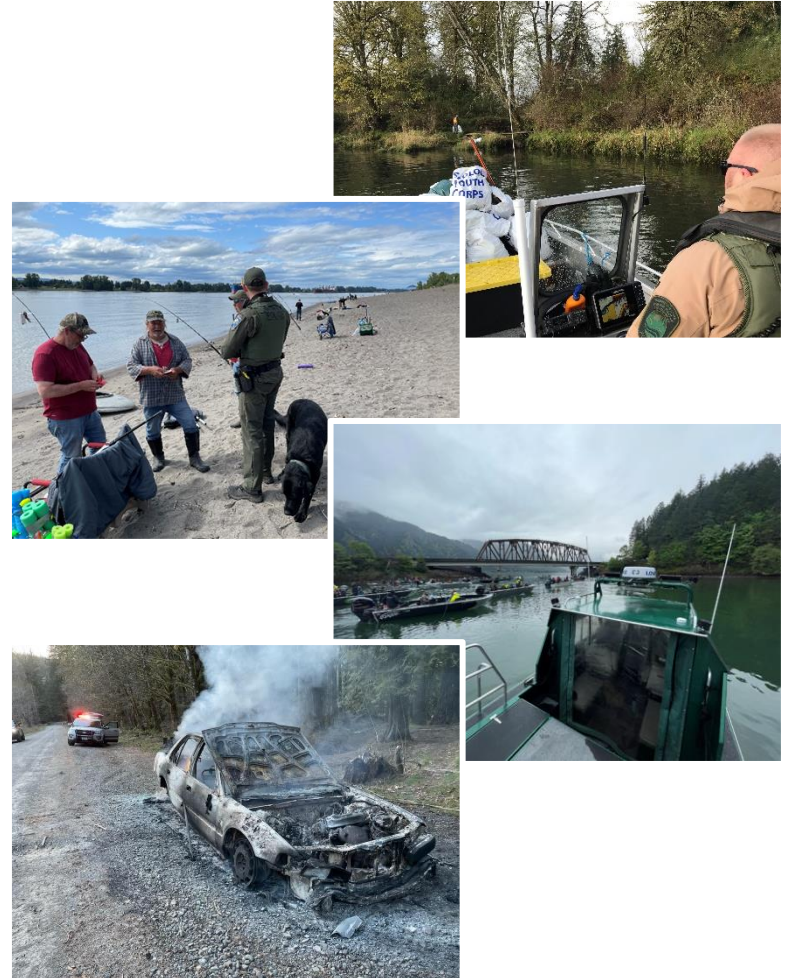




Enforcement Program

Enforcement Program Priorities

- Ensure safe, orderly, and sustainable recreational and commercial opportunities
- Protect priority fish, wildlife, lands, and habitats
- Mitigate human-safety conflicts with wildlife
- Respond to public safety incidents
- Conduct outreach and education in communities





Habitat Program

Habitat Program Priorities

- Administration of Hydraulic Code for the protection of fish life
- Growth management assistance to local governments
- Forest practices technical assistance to DNR
- Restoration and salmon recovery technical assistance
- Project highlight: Kwoneesum Dam Removal



South Bachelor Island Restoration Project



Kwoneesum Dam



Kwoneesum Dam Removal

Restoration and HPA

- Removal in upper Washougal watershed
- Led by Cowlitz Tribe in partnership with Columbia Land Trust and WDFW
- Restores access to 6.5 stream miles of former steelhead and coho habitat
- Funded primarily by Salmon Recovery Funding Board and Pacific Coastal Salmon Recovery Fund grants



Kwoneesum Dam



Thank you!
Questions?

