

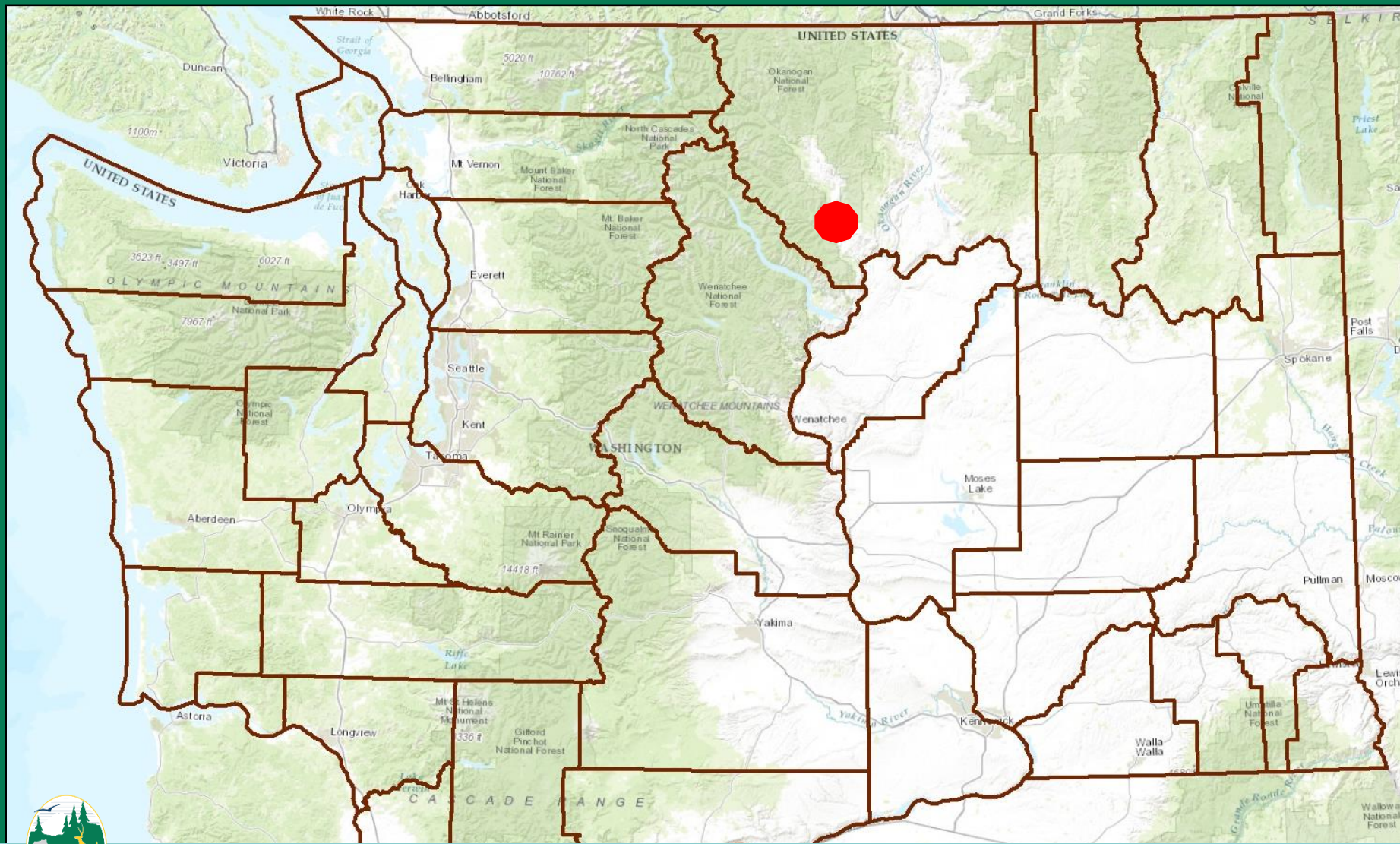
Land Transactions

Commission Meeting June 21, 2024

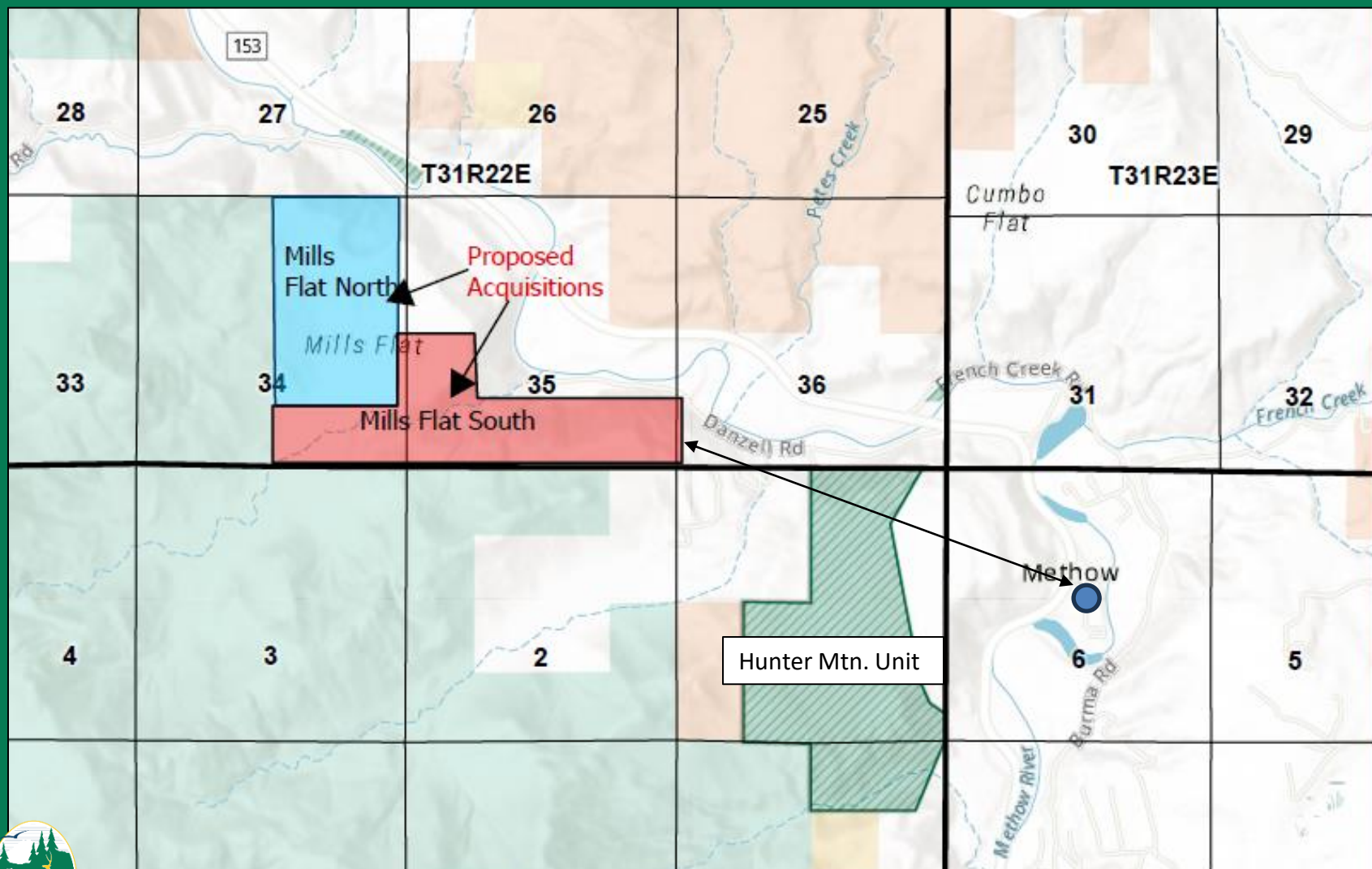
Lisa Coffman, Real Estate Services
Wildlife Program/Lands Division



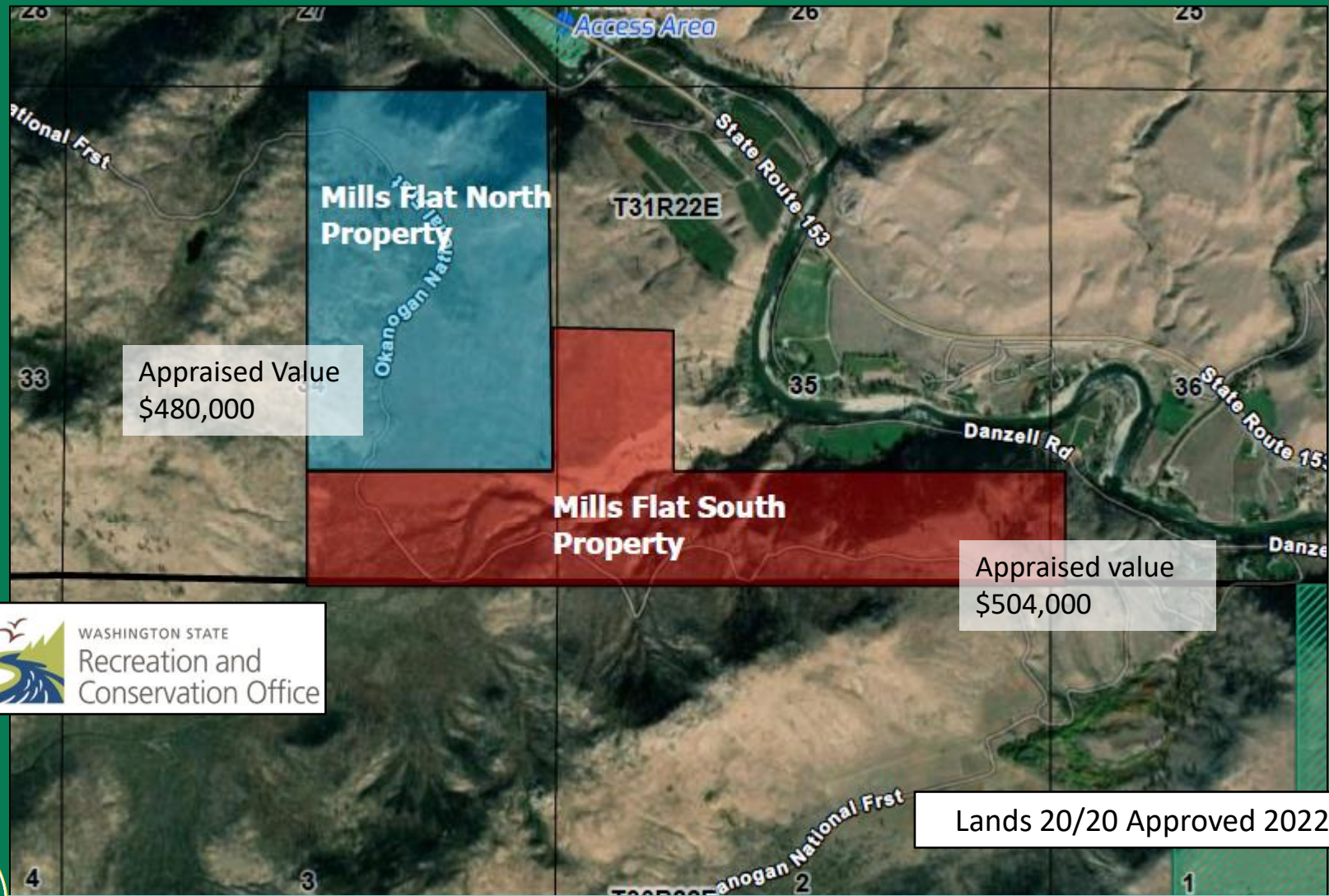
Acquisition of 2 Properties in the Hunter Mountain North Project Mills Flat North 240 Acres & Mills Flat South 280 Acres , Okanogan County, Region 2, Hunter Mountain Unit, Methow WLA



Acquisition of 2 Properties in the Hunter Mountain North Project Mills Flat North 240 Acres & Mills Flat South 280 Acres , Okanogan County, Region 2, Hunter Mountain Unit, Methow WLA



Acquisition of 2 Properties in the Hunter Mountain North Project Mills Flat North 240 Acres & Mills Flat South 280 Acres , Okanogan County, Region 2, Hunter Mountain Unit, Methow WLA



Acquisition of 2 Properties in the Hunter Mountain North Project Mills Flat North 240 Acres & Mills Flat South 280 Acres , Okanogan County, Region 2, Hunter Mountain Unit, Methow WLA

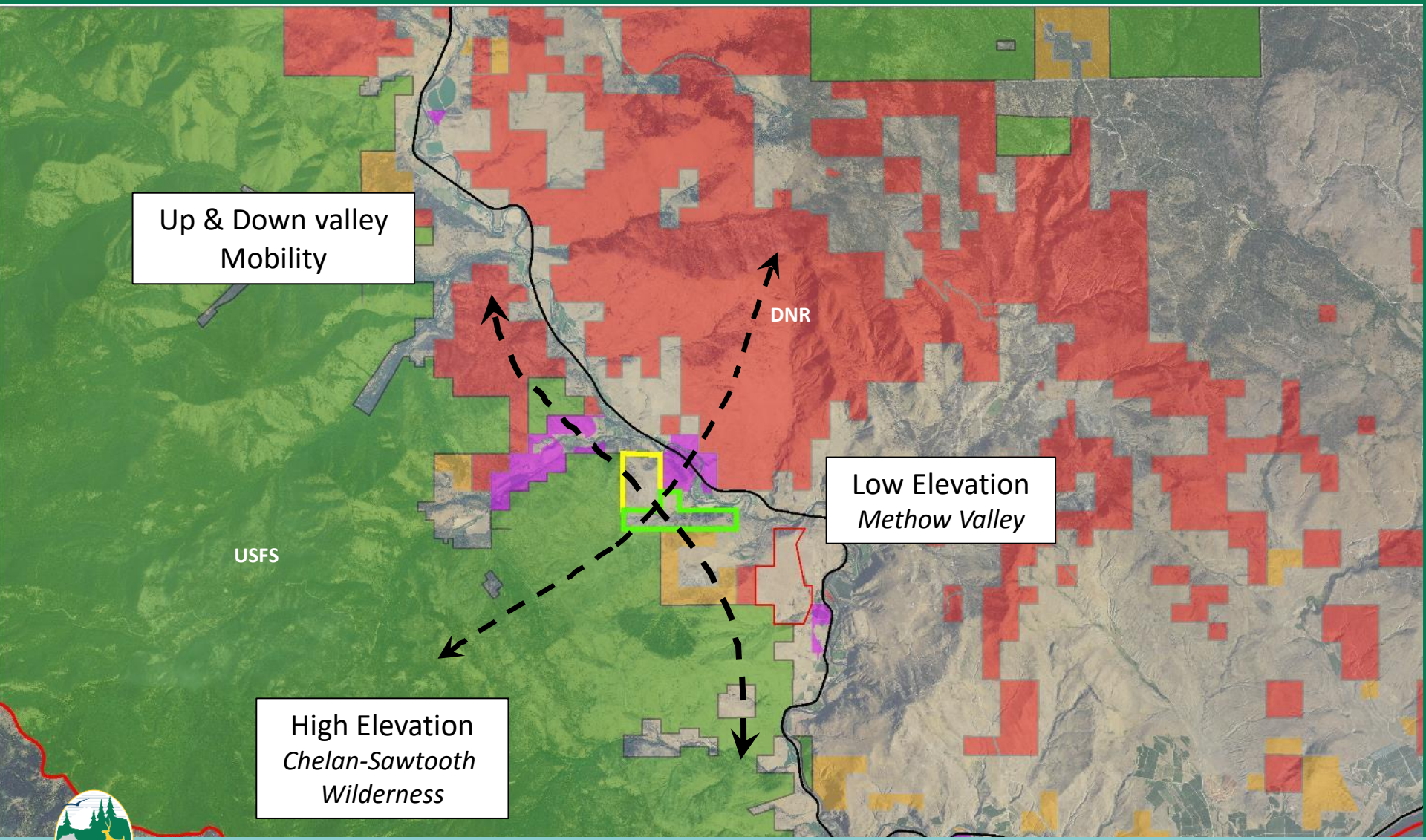
Multiple plans identify acquisition as important tool for protection and connectivity



North Property



Acquisition of 2 Properties in the Hunter Mountain North Project Mills Flat North 240 Acres & Mills Flat South 280 Acres , Okanogan County, Region 2, Hunter Mountain Unit, Methow WLA



Acquisition of 2 Properties in the Hunter Mountain North Project Mills Flat North 240 Acres & Mills Flat South 280 Acres , Okanogan County, Region 2, Hunter Mountain Unit, Methow WLA



Mule Deer – Okanogan Co



Hornet – Hunter Mountain

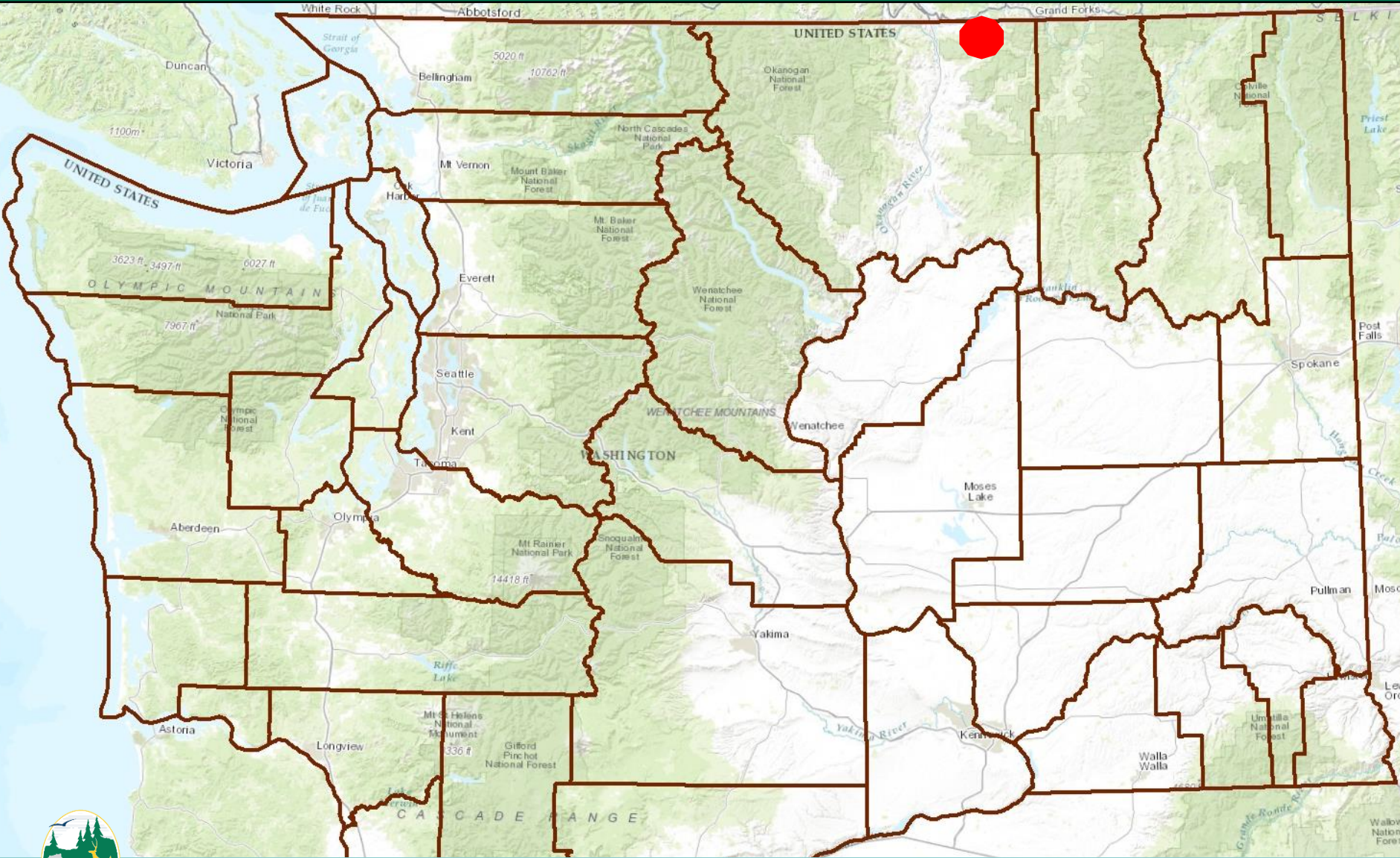


Savanna sparrow – Hunter Mt

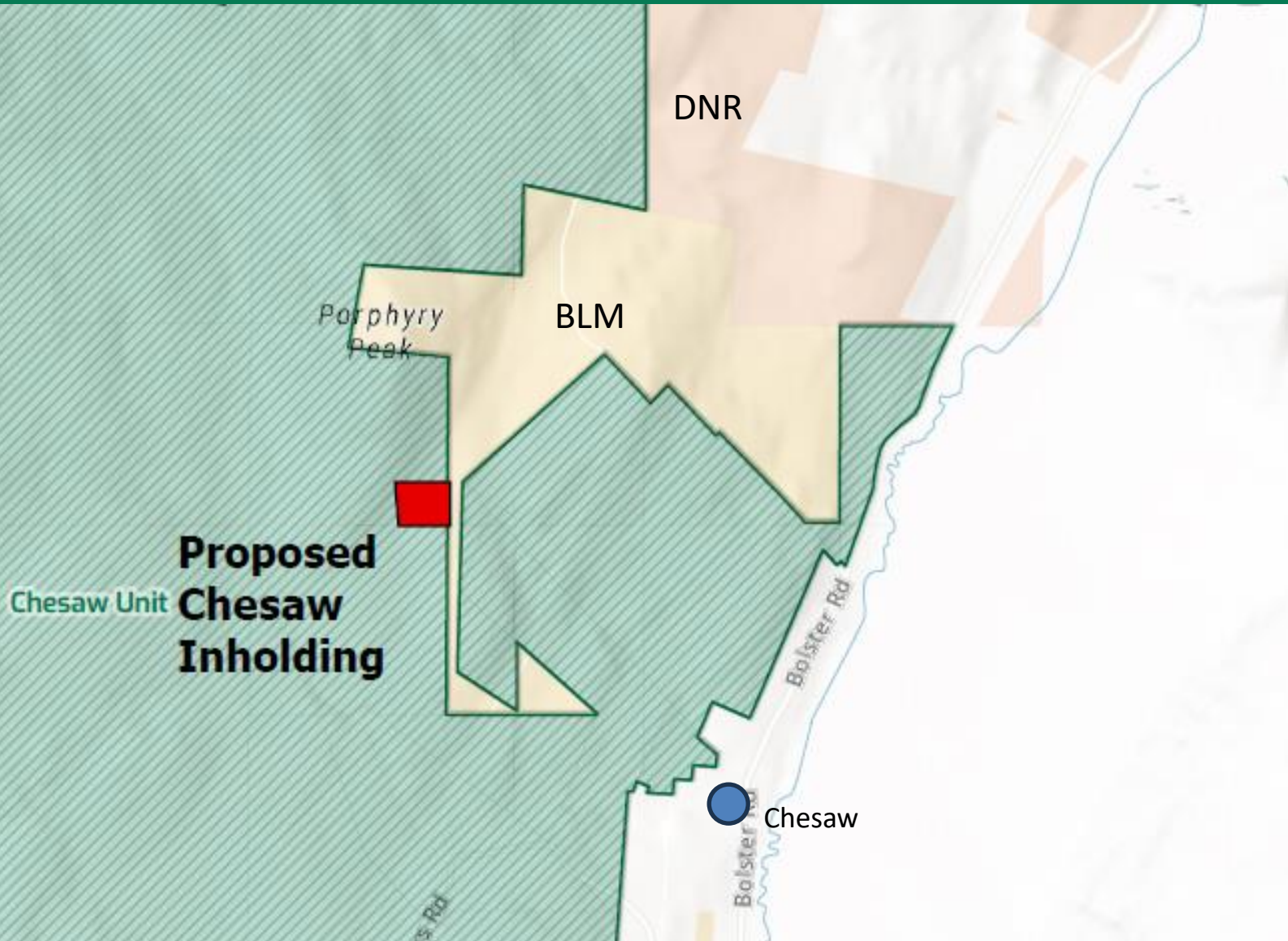
Pond & Wetland - USFS land adjacent to project



Acquisition of 2(+/-) Acres in Okanogan County, Region 2 Scotch Creek Wildlife Area, Chesaw Unit, Chesaw Inholding



Acquisition of 2(+/-) Acres in Okanogan County, Region 2 Scotch Creek Wildlife Area, Chesaw Unit, Chesaw Inholding



Acquisition of 2(+/-) Acres in Okanogan County, Region 2 Scotch Creek Wildlife Area, Chesaw Unit, Chesaw Inholding

Appraised Value/Purchase Price \$17,000



Lands 20/20 Approved 2023



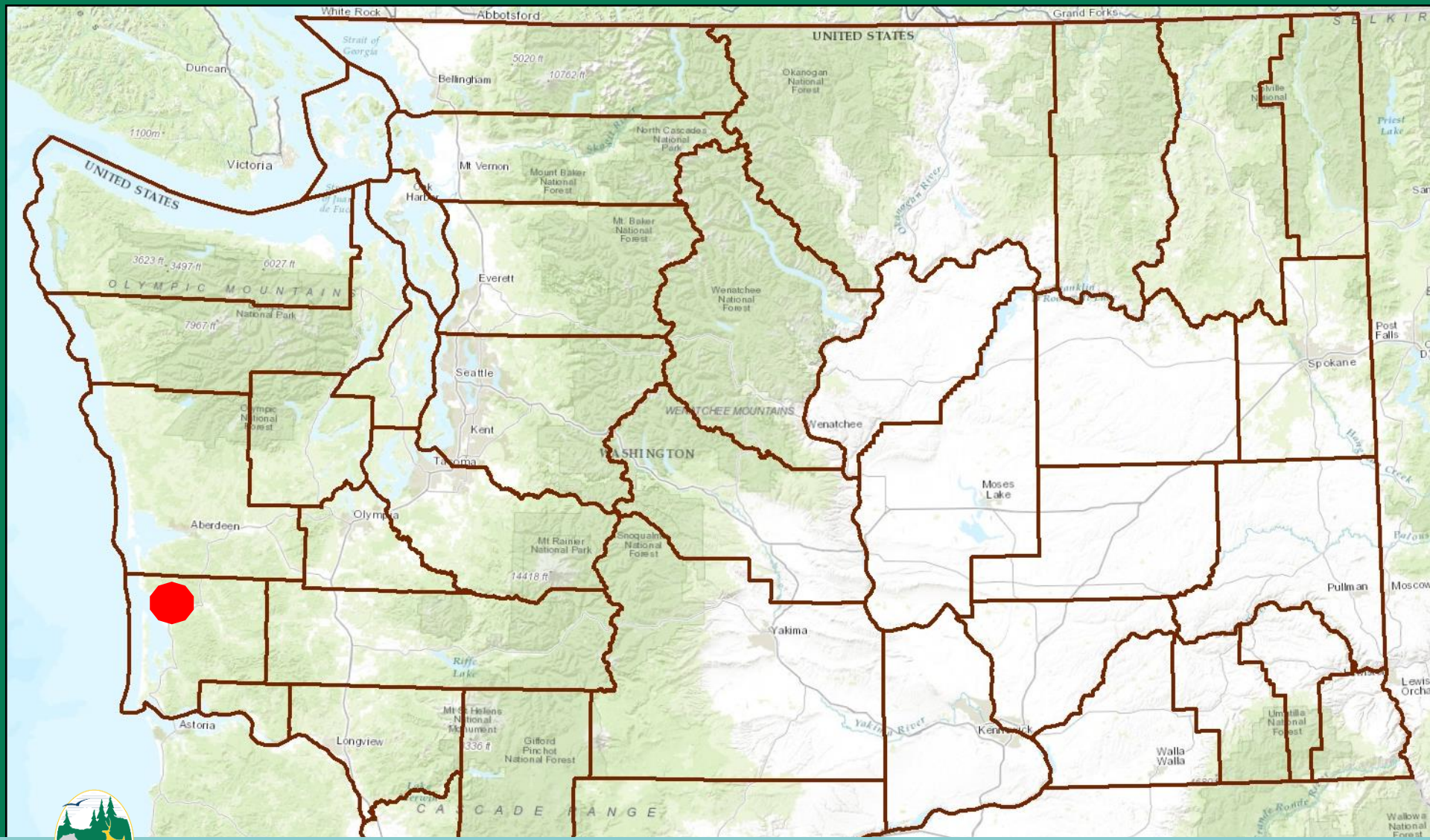
Acquisition of 2(+/-) Acres in Okanogan County, Region 2 Scotch Creek Wildlife Area, Chesaw Unit, Chesaw Inholding



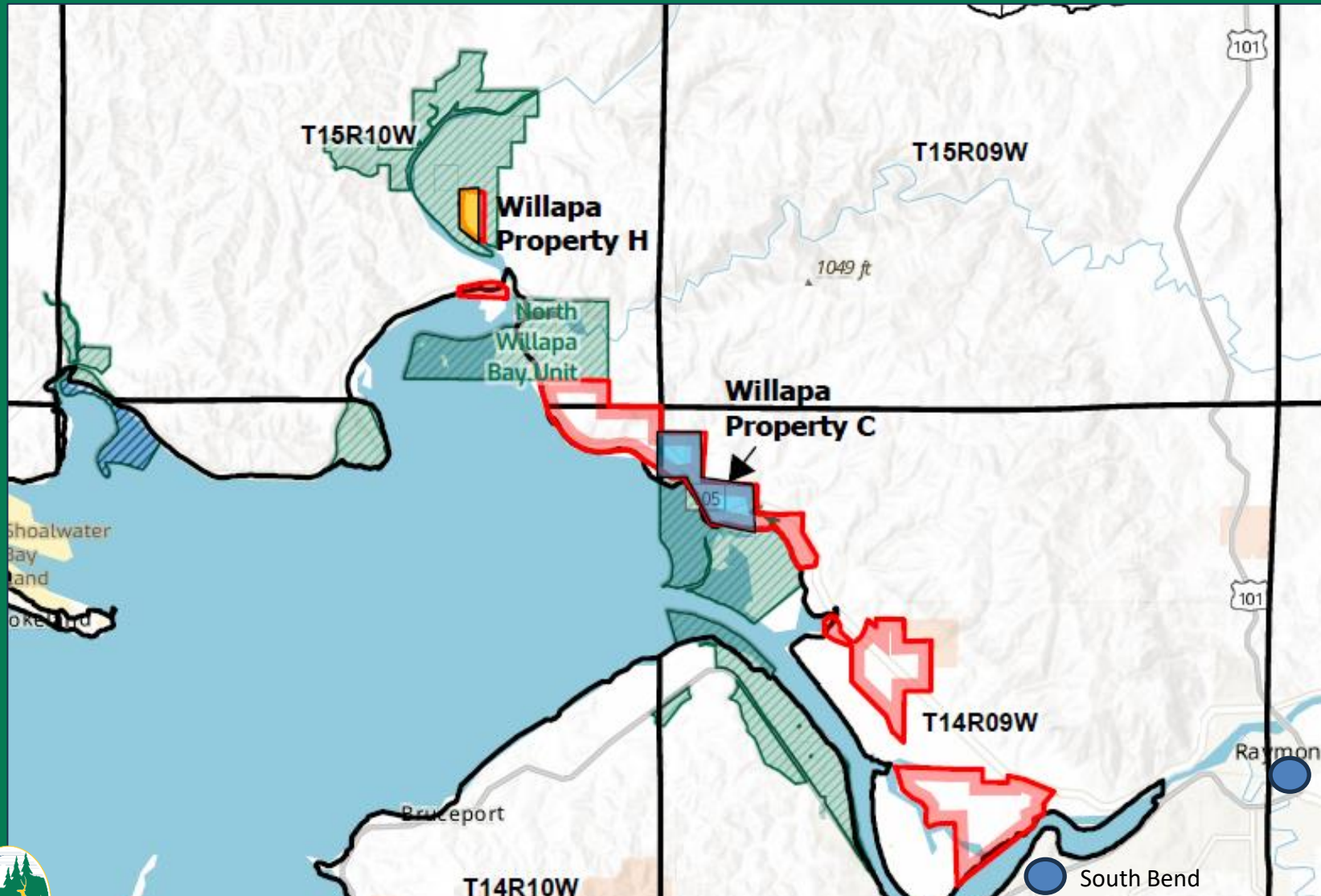
Acquisition of 2(+/-) Acres in Okanogan County, Region 2 Scotch Creek Wildlife Area, Chesaw Unit, Chesaw Inholding



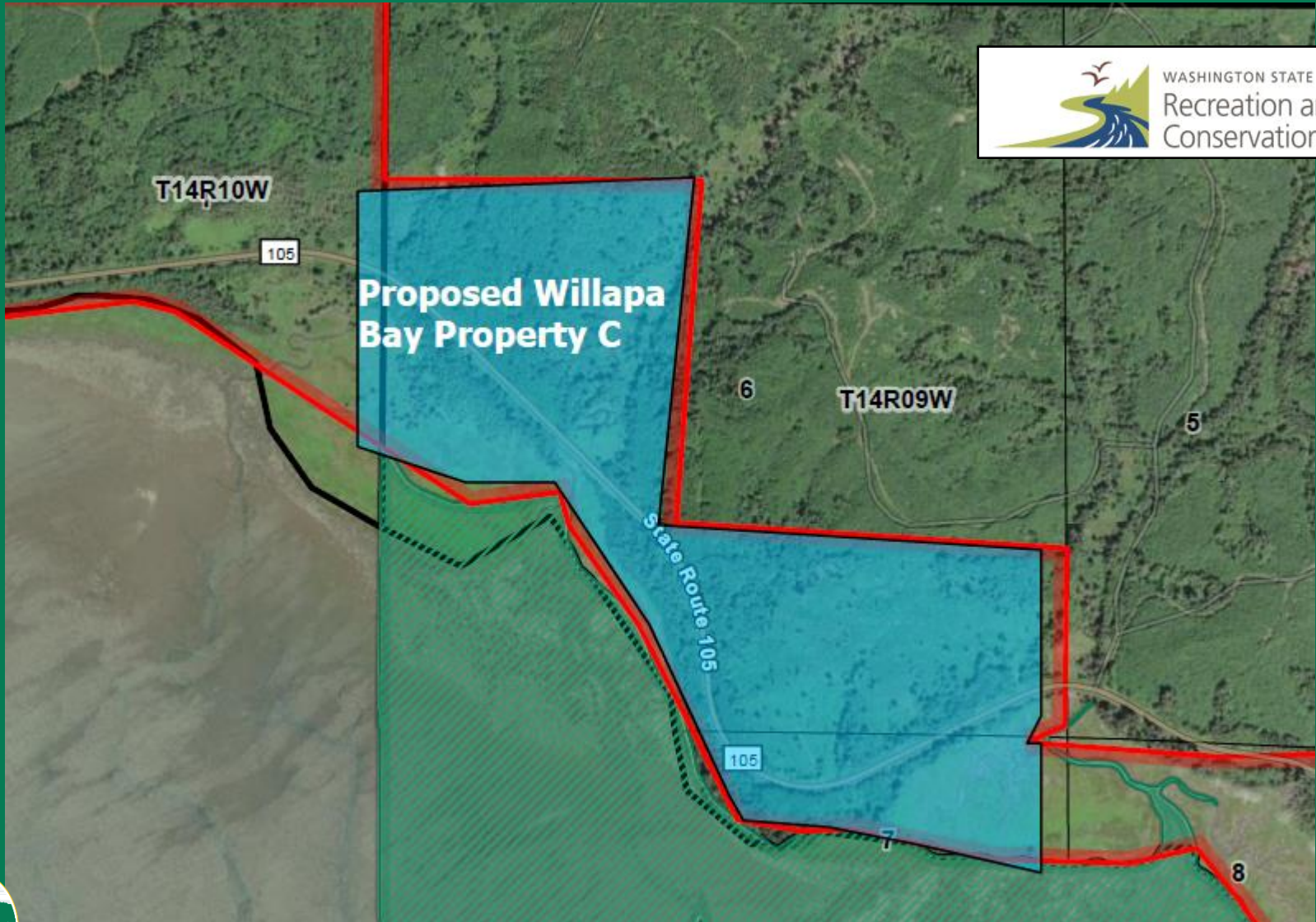
Acquisition of 2 properties in the North Willapa Bay Estuaries & Shoreline Project, Pacific County, Region 6, Johns River Wildlife Area, North Willapa Bay Unit



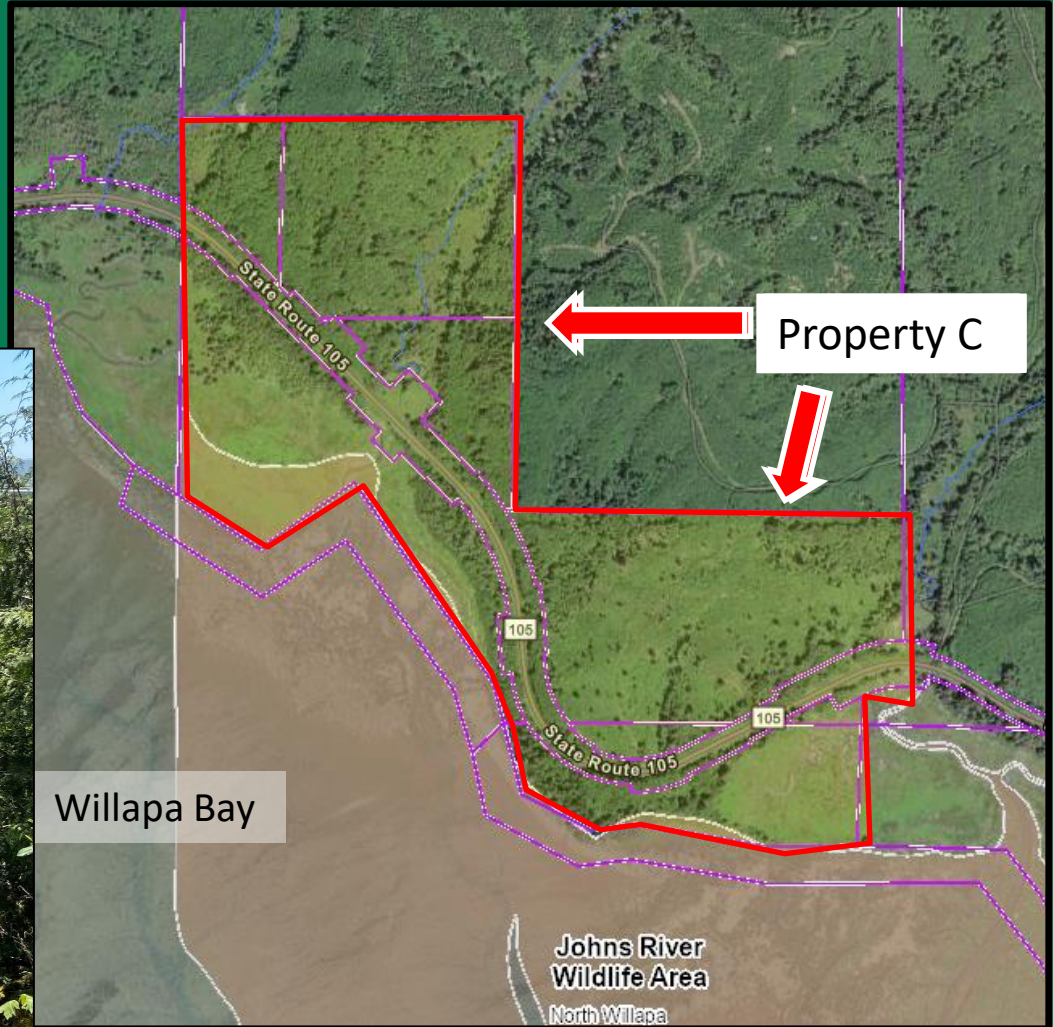
Acquisition of 2 properties in the North Willapa Bay Estuaries & Shoreline Project, Pacific County, Region 6, Johns River Wildlife Area, North Willapa Bay Unit



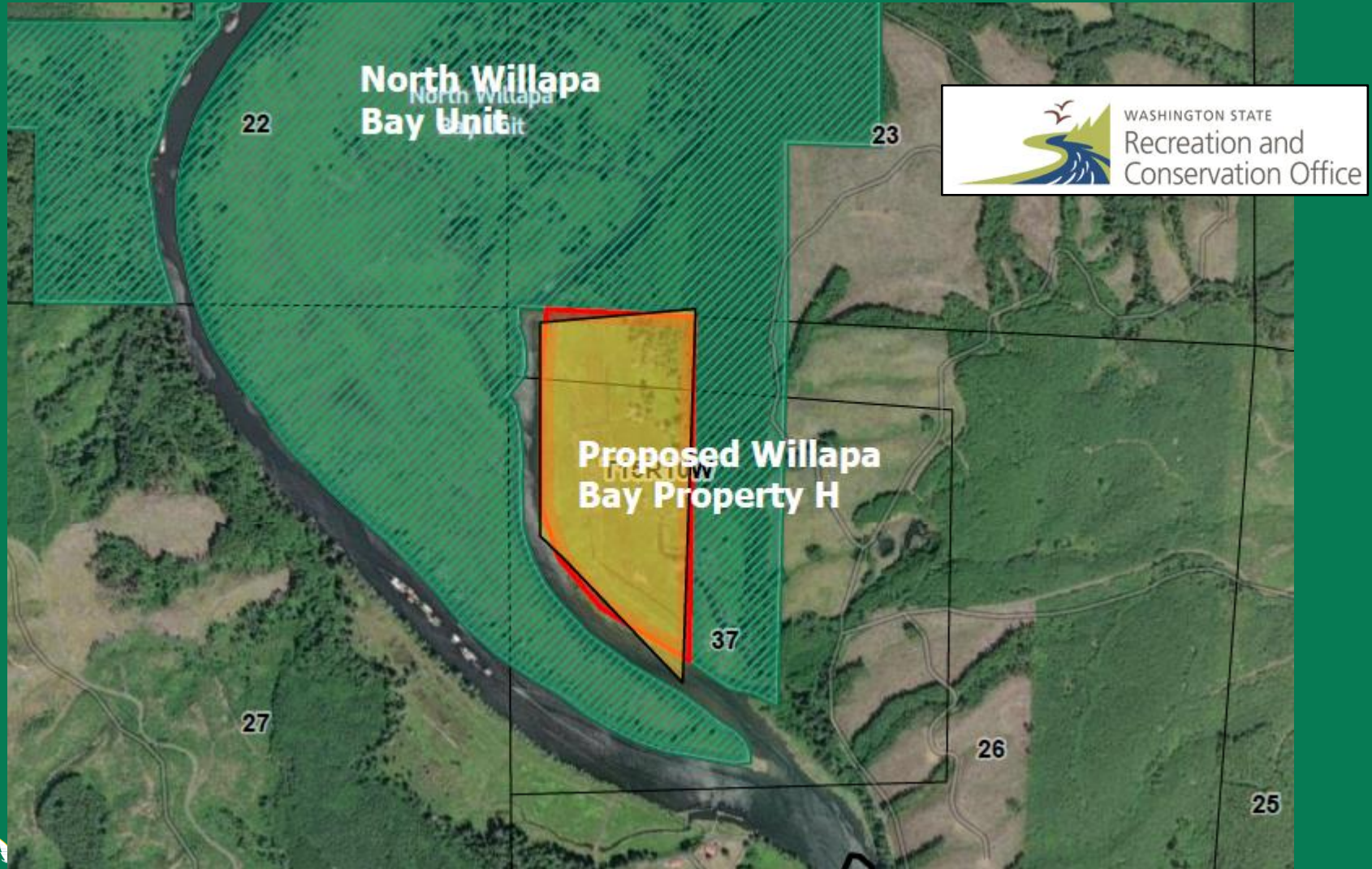
Acquisition of 2 properties in the North Willapa Bay Estuaries & Shoreline Project, Pacific County, Region 6, Johns River Wildlife Area, North Willapa Bay Unit



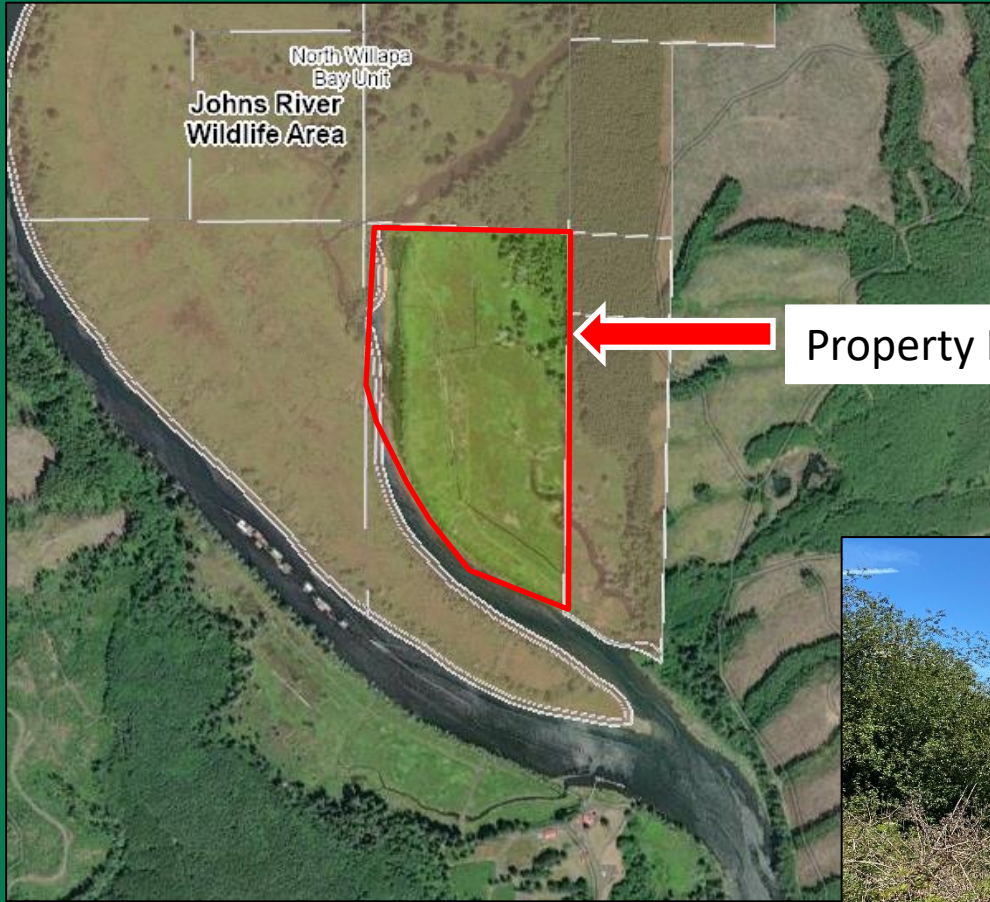
Acquisition of 2 properties in the North Willapa Bay Estuaries & Shoreline Project, Pacific County, Region 6, Johns River Wildlife Area, North Willapa Bay Unit



Acquisition of 2 properties in the North Willapa Bay Estuaries & Shoreline Project, Pacific County, Region 6, Johns River Wildlife Area, North Willapa Bay Unit



Acquisition of 2 properties in the North Willapa Bay Estuaries & Shoreline Project, Pacific County, Region 6, Johns River Wildlife Area, North Willapa Bay Unit



Acquisition of 2(+/-) Acres in Okanogan County, Region 2 Scotch Creek Wildlife Area, Chesaw Unit, Chesaw Inholding



Questions

