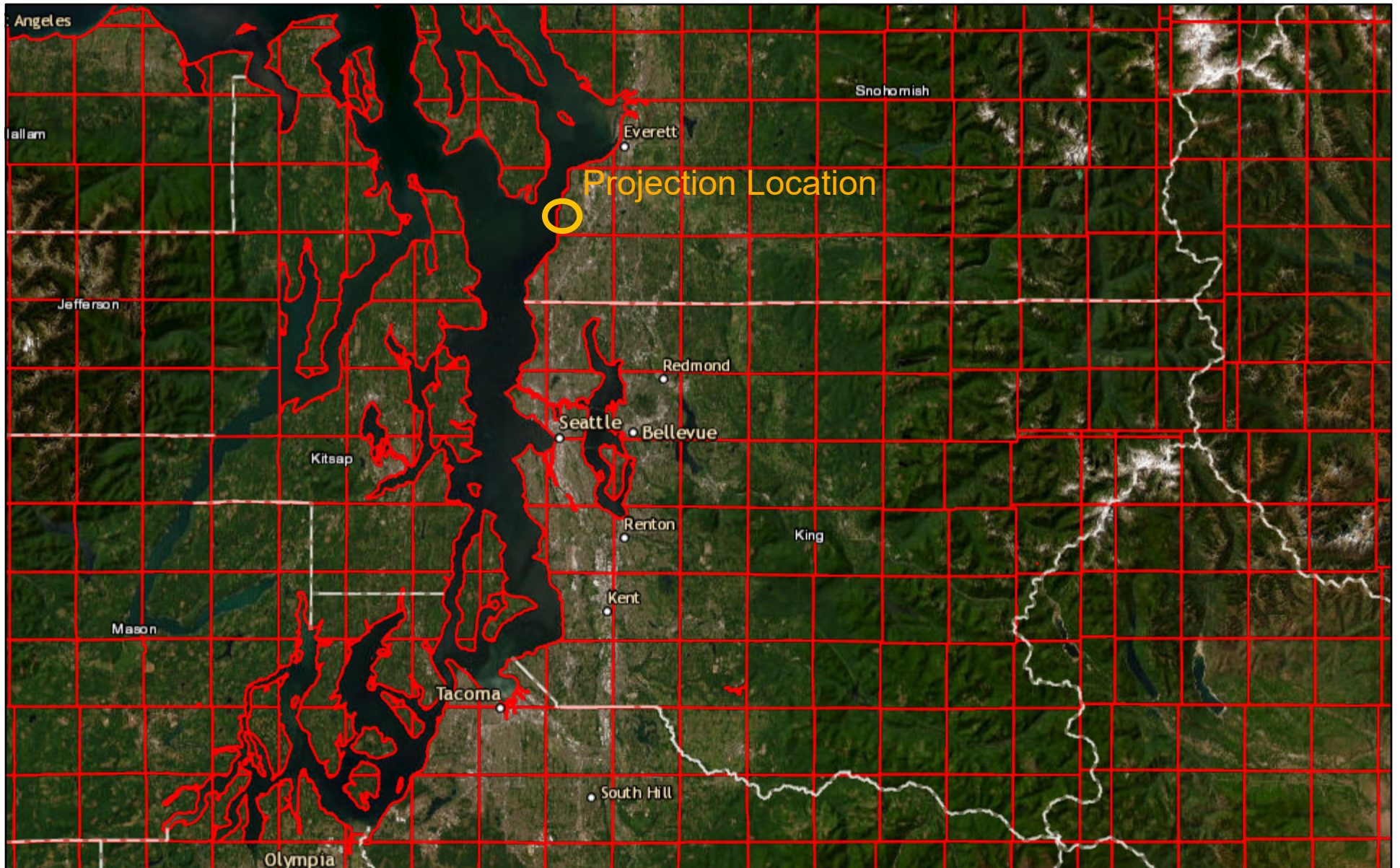
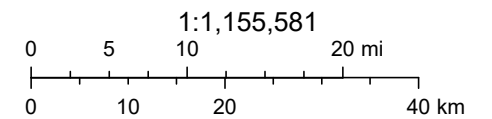


Picnic Point Pond Grass Carp

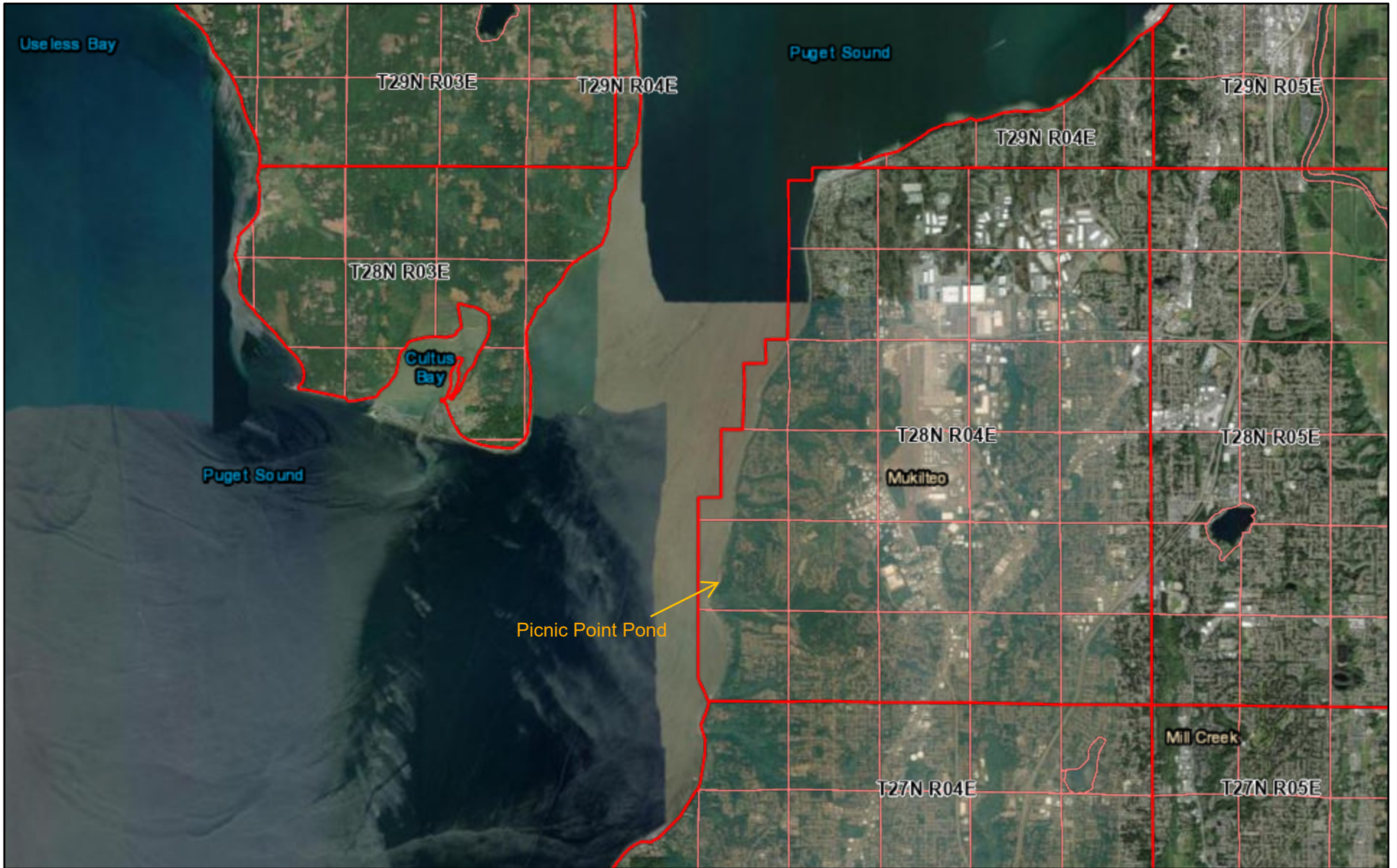


September 11, 2024

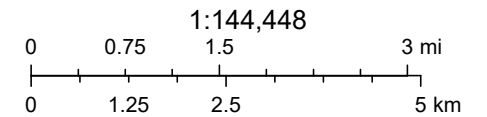


Esri, HERE, Garmin, Earthstar Geographics, Compiled by the Bureau of Land Management (BLM), National Operations Center (NOC)

Picnic Point Pond Grass Carp

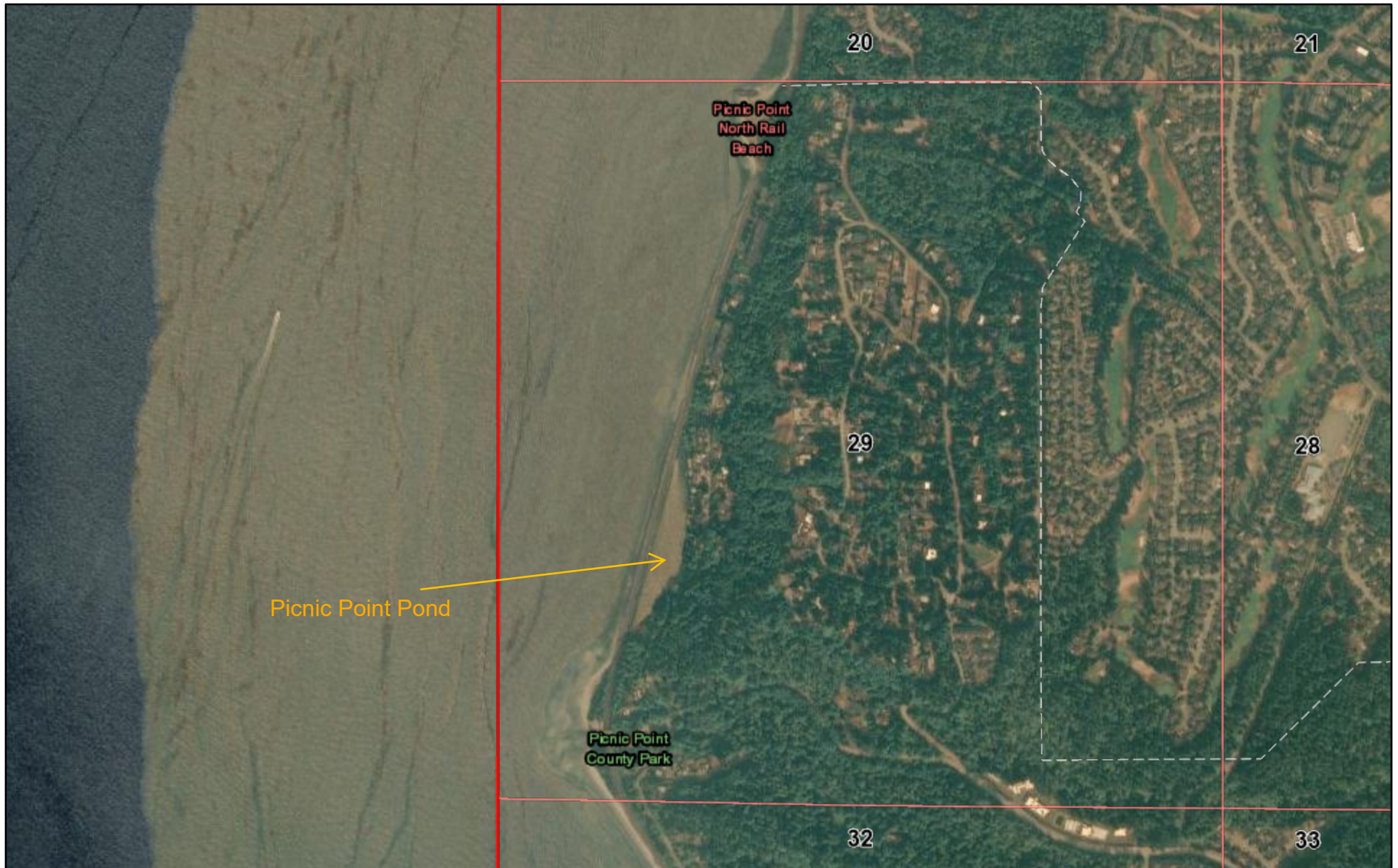


September 11, 2024

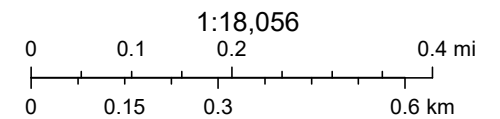


Esri, HERE, Garmin, Earthstar Geographics, Compiled by the Bureau of Land Management (BLM), National Operations Center (NOC)

Picnic Point Pond Grass Carp

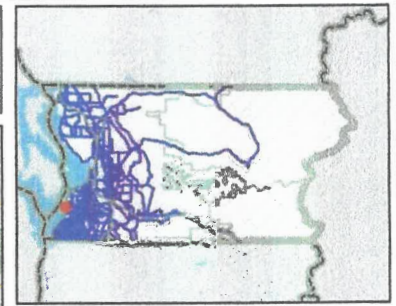


September 11, 2024



Compiled by the Bureau of Land Management (BLM), National Operations Center (NOC), Esri, HERE, Garmin, iPC, Maxar

28101' x 468' widest part
= 13,153 sq ft



- Legend**
- Snohomish County Tax Parcels
 - Airports
 - Fire Stations
 - Hospitals
 - Police Stations
 - Schools
 - Bus Stops
 - Community Transit Park and Ride
 - Ferry Terminals
 - Buildings
 - Ferry Routes
 - County Lines 2,400 - 4,800
 - Stillaguamish Indian Reservation Boundary
 - Tulalip Indian Reservation Boundary
 - Cities 2,400 - 4,800
 - Streets 2,400 - 4,800
 - Interstate
 - State Route
 - Ramps
 - Major Road; Major Road
 - Minor Road; Minor Road
 - Access Road
 - Water Features
 - County Parks 2,400 - 4,800
 - Cities 2,400 - 4,800
 - National Forest 2,400 - 4,800
 - County Region
 - RELIEF_HILLSHADE

1:2,810



468.4 0 234.18 468.4 Feet

Projection: NAD_1983_StatePlane_Washington_North_FIPS_4601_Feet
Planning and Development Services, Snohomish County

All maps, data, and information set forth herein ("Data"), are for illustrative purposes only and are not to be considered an official citation to, or representation of, the Snohomish County Code. Amendments and updates to the Data, together with other applicable County Code provisions, may apply which are not depicted herein. Snohomish County makes no representation or warranty concerning the content, accuracy, currency, completeness or quality of the Data contained herein and expressly disclaims any warranty of merchantability or fitness for any particular purpose. All persons accessing or otherwise using this Data assume all responsibility for use thereof and agree to hold Snohomish County harmless from and against any damages, loss, claim or liability arising out of any error, defect or omission contained within said Data. Washington State Law, Ch. 42.55 RCW, prohibits state and local agencies from providing access to lists of individuals intended for use for commercial purposes and, thus, no commercial use may be made of any Data comprising lists of individuals contained herein.

Notes
This map was automatically generated using Geocortex Essentials.