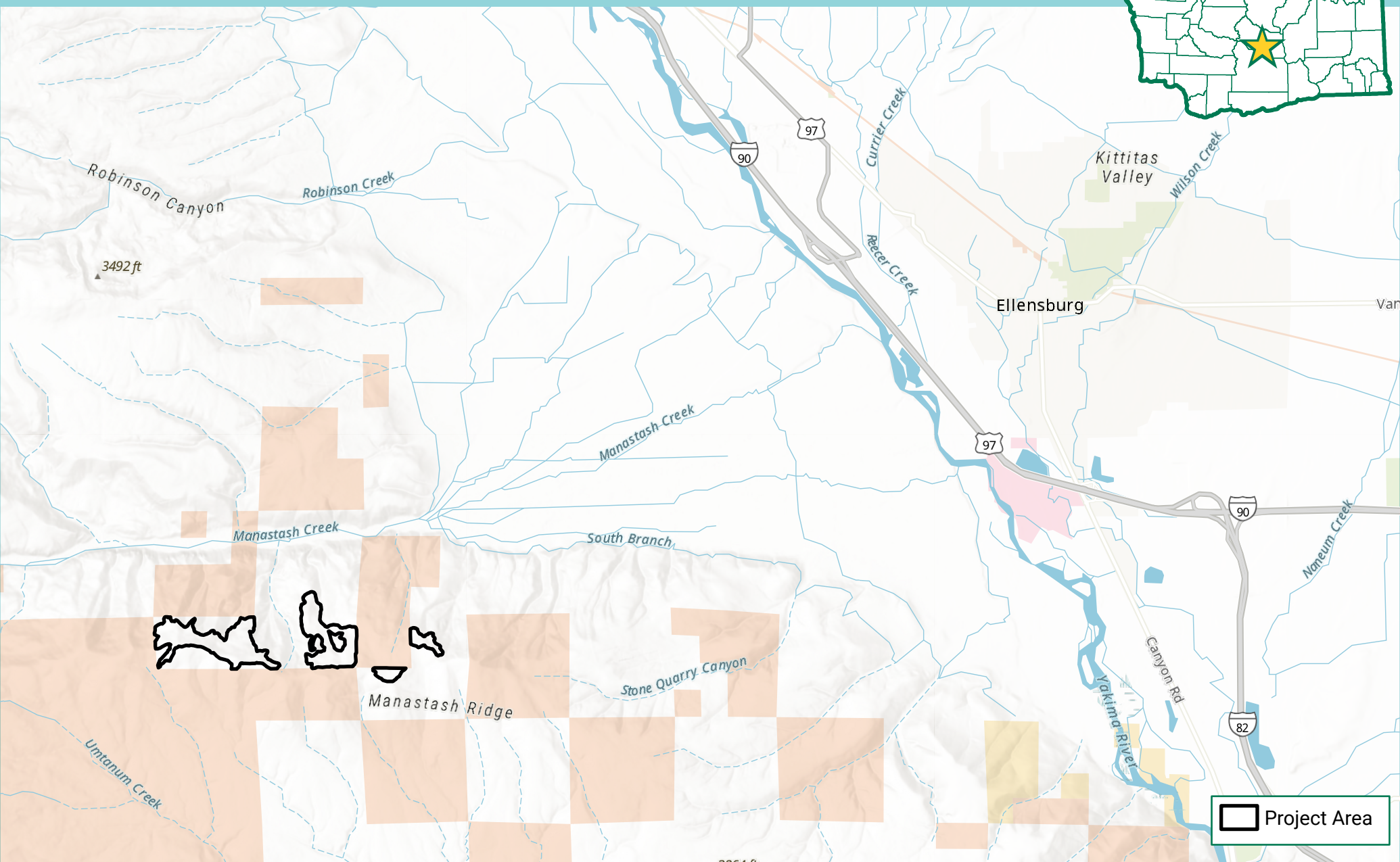
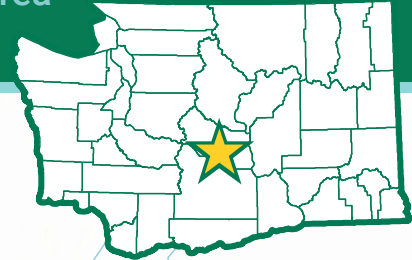



Observatory SEPA Map

Commercial Restoration Thinning

Wenas Wildlife Area
Kittitas County



 Project Area



Department of Fish and Wildlife

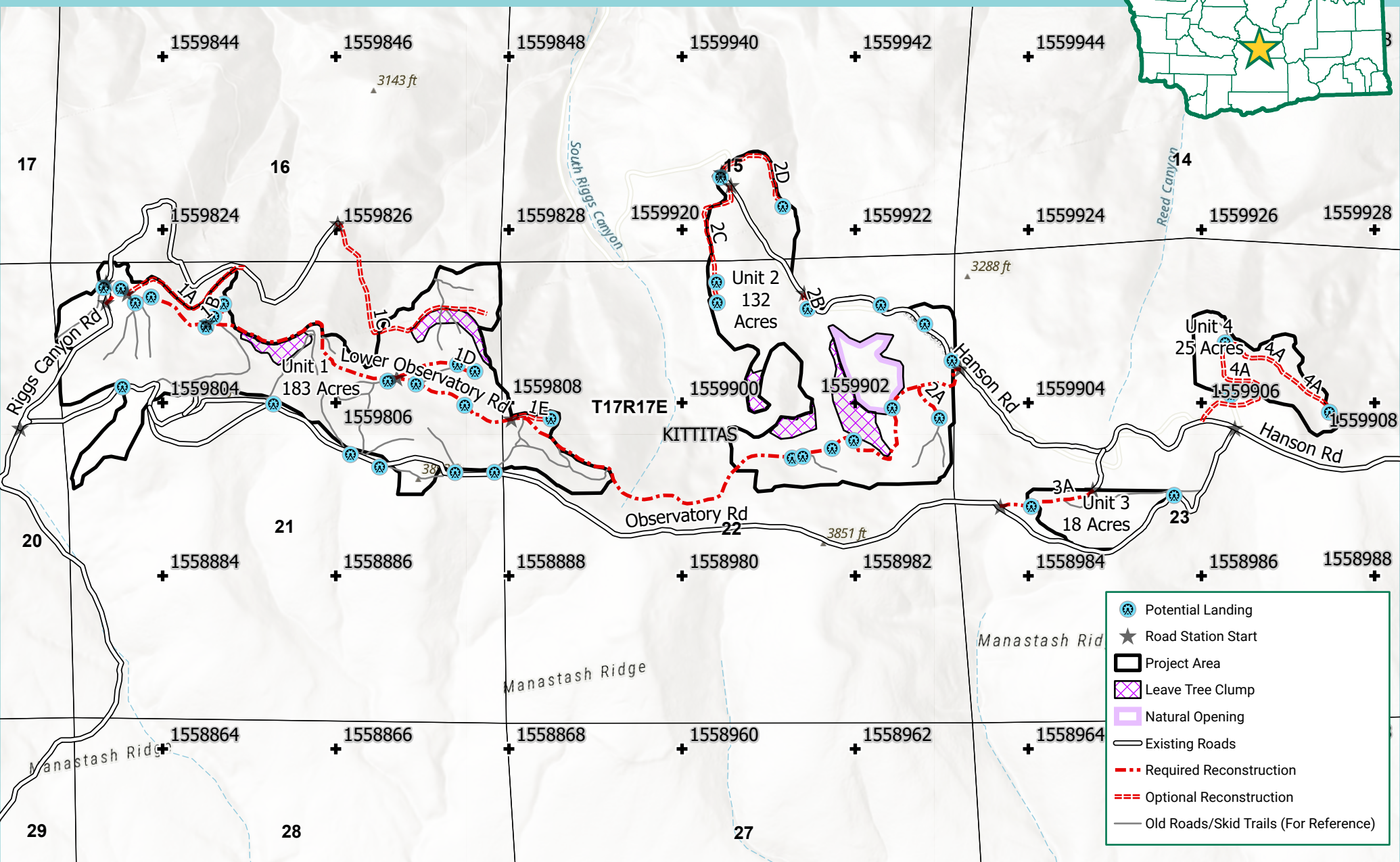


This product is for informational purposes and may not have been prepared for or be suitable for legal, engineering, or surveying purposes. It does not represent an on-the-ground survey and represents only the approximate relative location of property boundaries.

Observatory FPA Map

Commercial Restoration Thinning

Wenas Wildlife Area
Kittitas County



Department of Fish and Wildlife

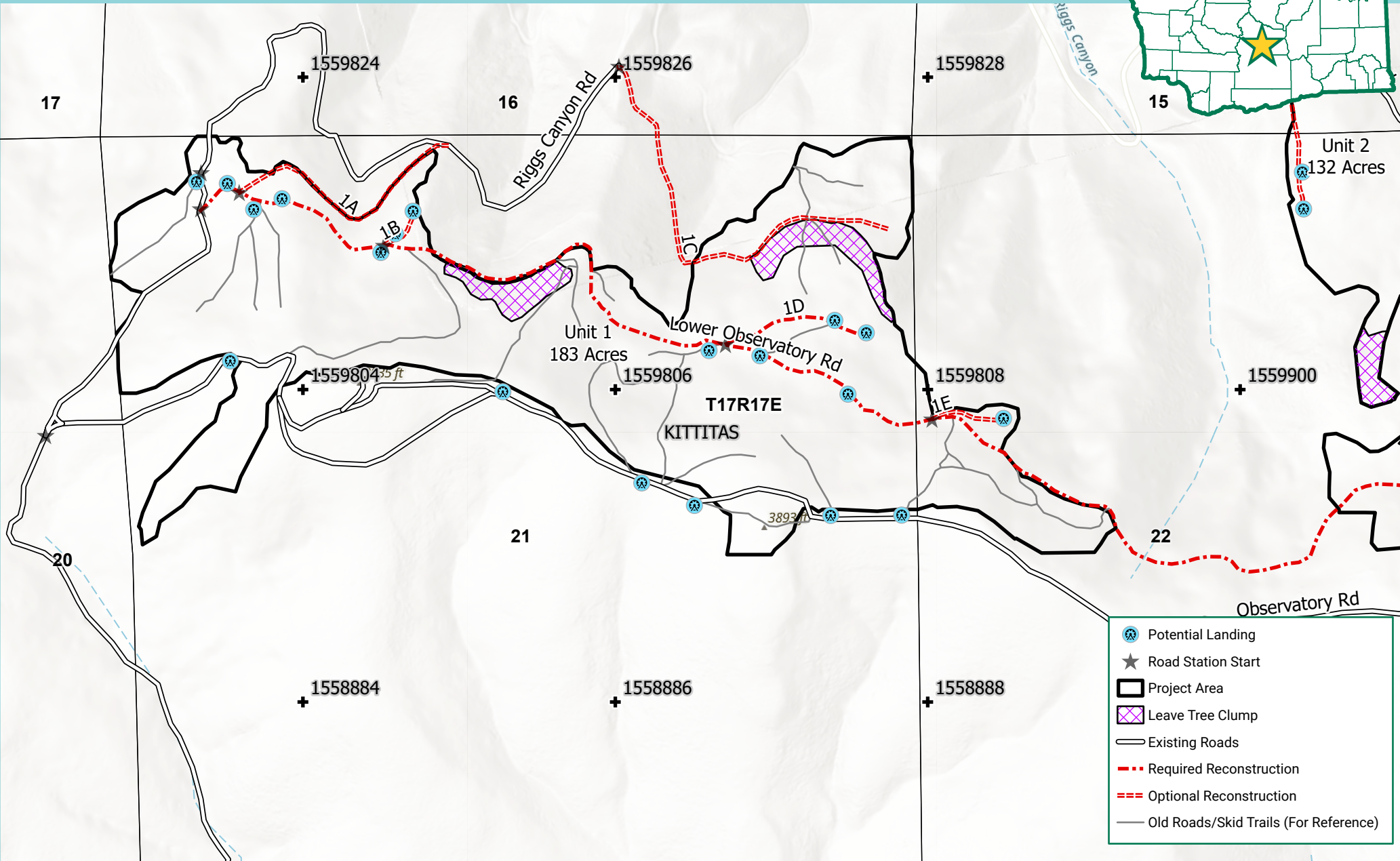
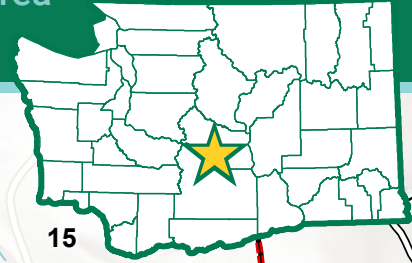


This product is for informational purposes and may not have been prepared for or be suitable for legal, engineering, or surveying purposes. It does not represent an on-the-ground survey and represents only the approximate relative location of property boundaries.

Observatory FPA Map

Commercial Restoration Thinning

Wenas Wildlife Area
Kittitas County



- Potential Landing
- Road Station Start
- Project Area
- Leave Tree Clump
- Existing Roads
- Required Reconstruction
- Optional Reconstruction
- Old Roads/Skid Trails (For Reference)



Department of Fish and Wildlife

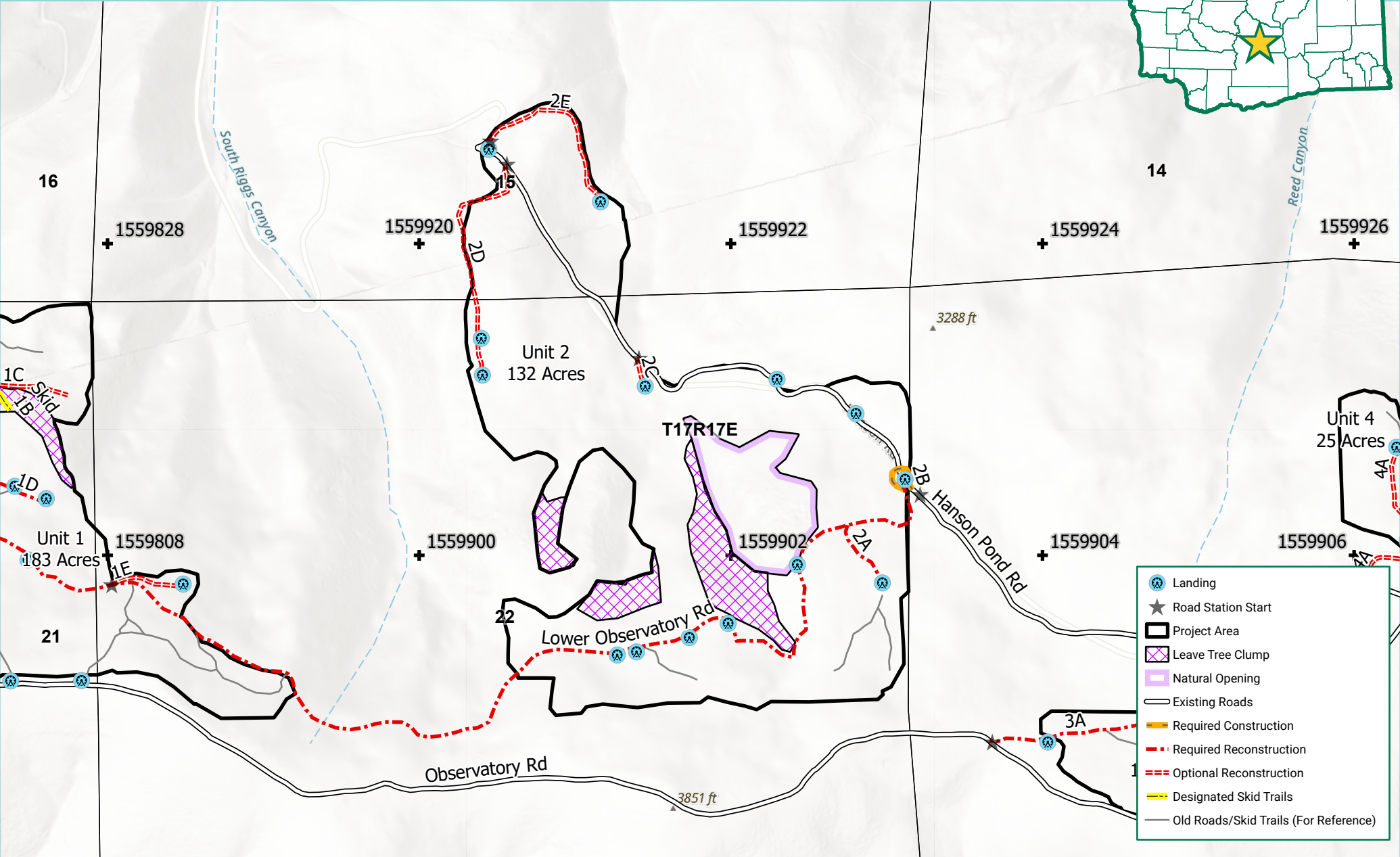
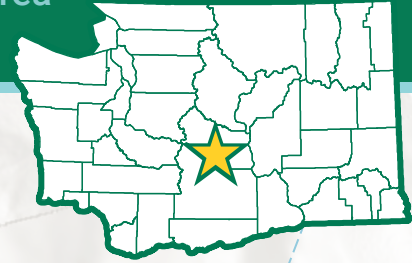


This product is for informational purposes and may not have been prepared for or be suitable for legal, engineering, or surveying purposes. It does not represent an on-the-ground survey and represents only the approximate relative location of property boundaries.

Observatory FPA Map

Commercial Restoration Thinning

Wenas Wildlife Area
Kittitas County



- Landing
- Road Station Start
- Project Area
- Leave Tree Clump
- Natural Opening
- Existing Roads
- Required Construction
- Required Reconstruction
- Optional Reconstruction
- Designated Skid Trails
- Old Roads/Skid Trails (For Reference)



Department of Fish and Wildlife

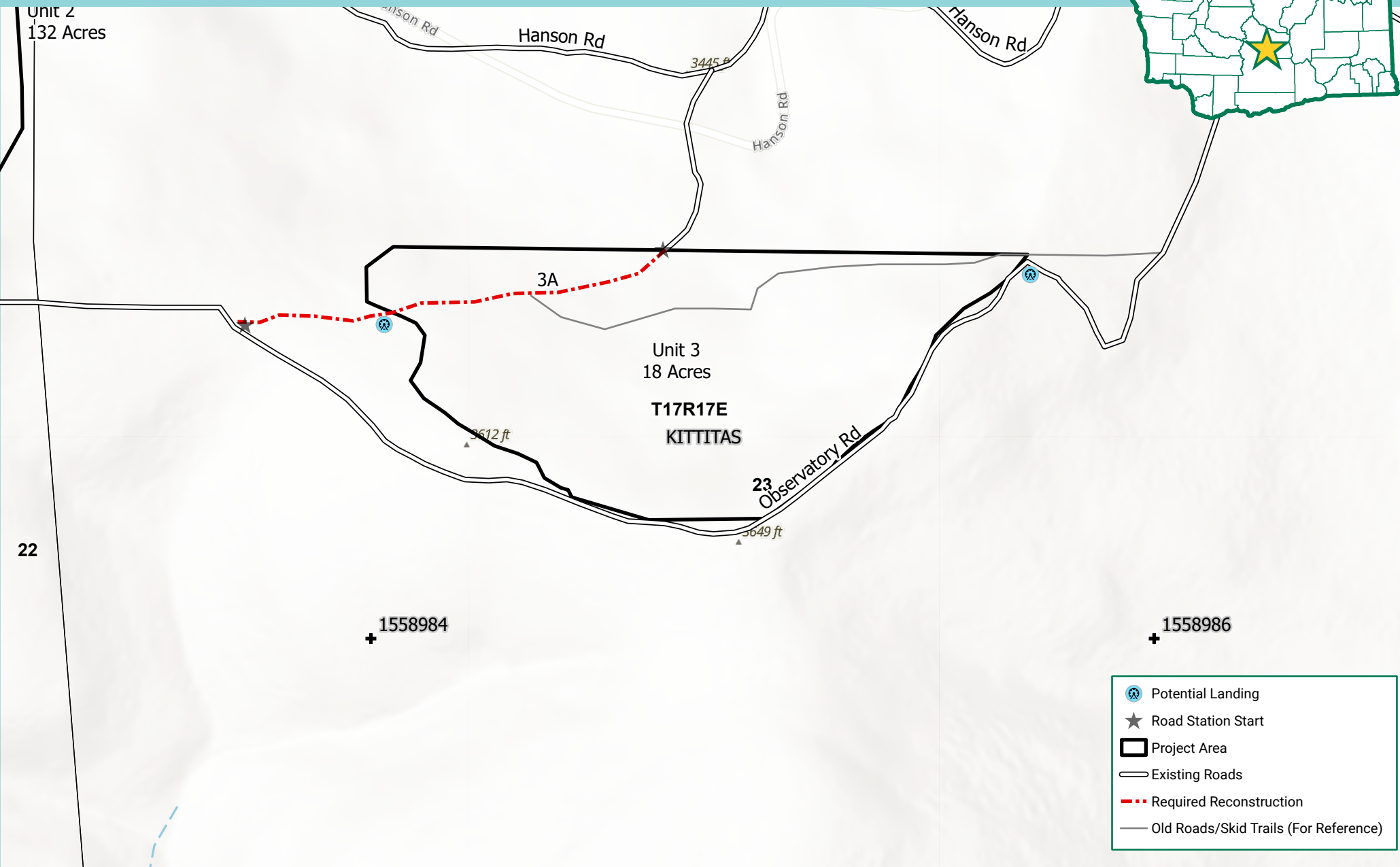
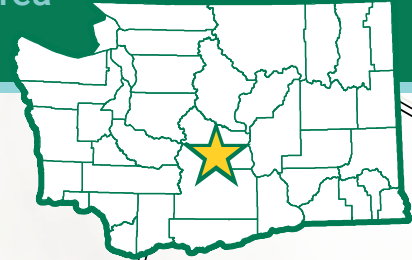


This product is for informational purposes and may not have been prepared for or be suitable for legal, engineering, or surveying purposes. It does not represent an on-the-ground survey and represents only the approximate relative location of property boundaries.

Observatory FPA Map

Commercial Restoration Thinning

Wenas Wildlife Area
Kittitas County



- Potential Landing
- Road Station Start
- Project Area
- Existing Roads
- Required Reconstruction
- Old Roads/Skid Trails (For Reference)



Department of Fish and Wildlife

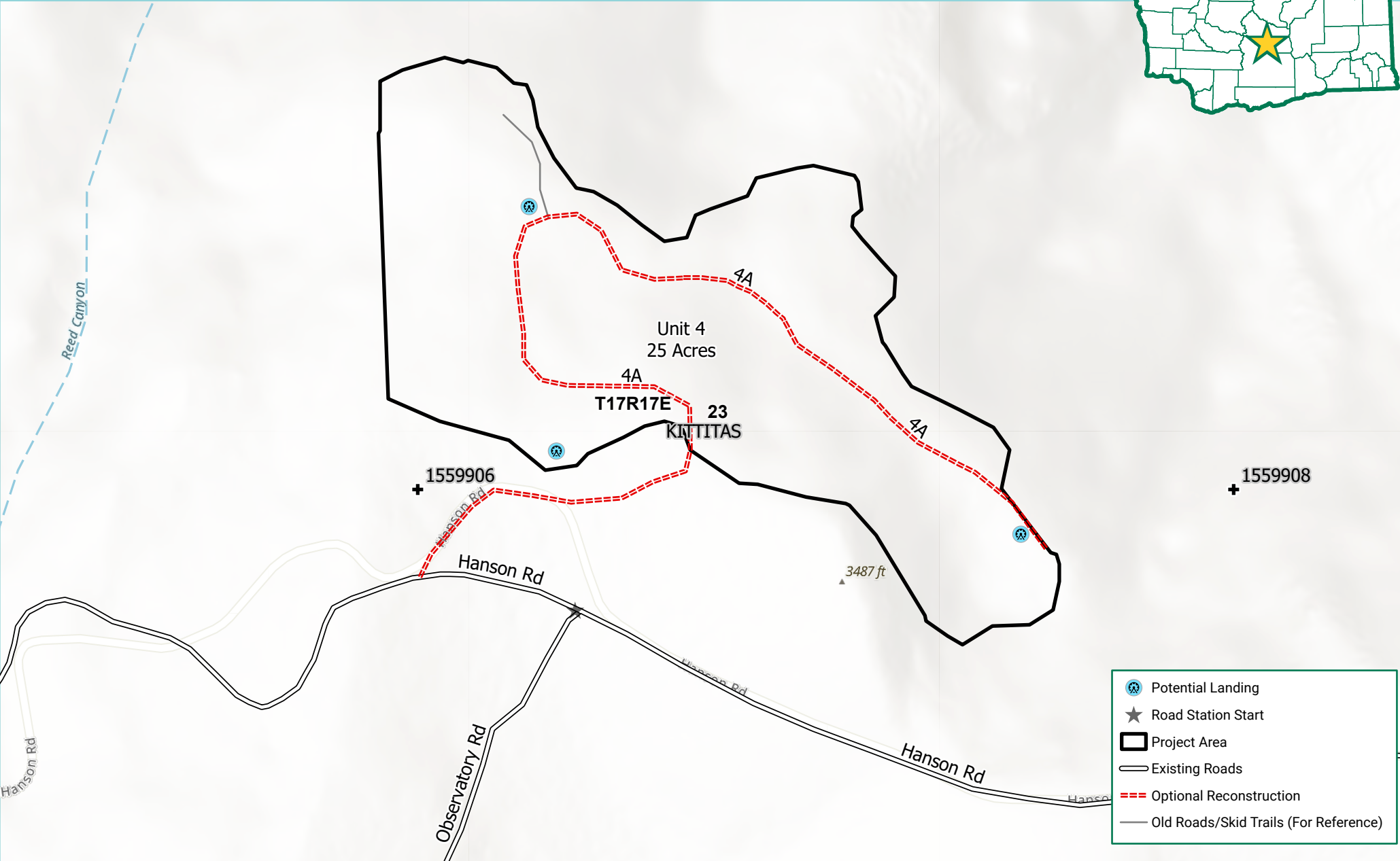
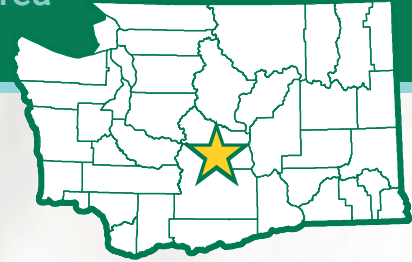


This product is for informational purposes and may not have been prepared for or be suitable for legal, engineering, or surveying purposes. It does not represent an on-the-ground survey and represents only the approximate relative location of property boundaries.

Observatory FPA Map

Commercial Restoration Thinning

Wenas Wildlife Area
Kittitas County



- Potential Landing
- Road Station Start
- Project Area
- Existing Roads
- Optional Reconstruction
- Old Roads/Skid Trails (For Reference)



Department of Fish and Wildlife



This product is for informational purposes and may not have been prepared for or be suitable for legal, engineering, or surveying purposes. It does not represent an on-the-ground survey and represents only the approximate relative location of property boundaries.