

Black Bear Framework Option

Dr. Ilai Keren
Dr. Brian Kertson
Dr. Donny Martorello

Dr. Lindsay Welfelt
Dr. Stephanie Landry
Rich Beausoleil
Anis Aoude

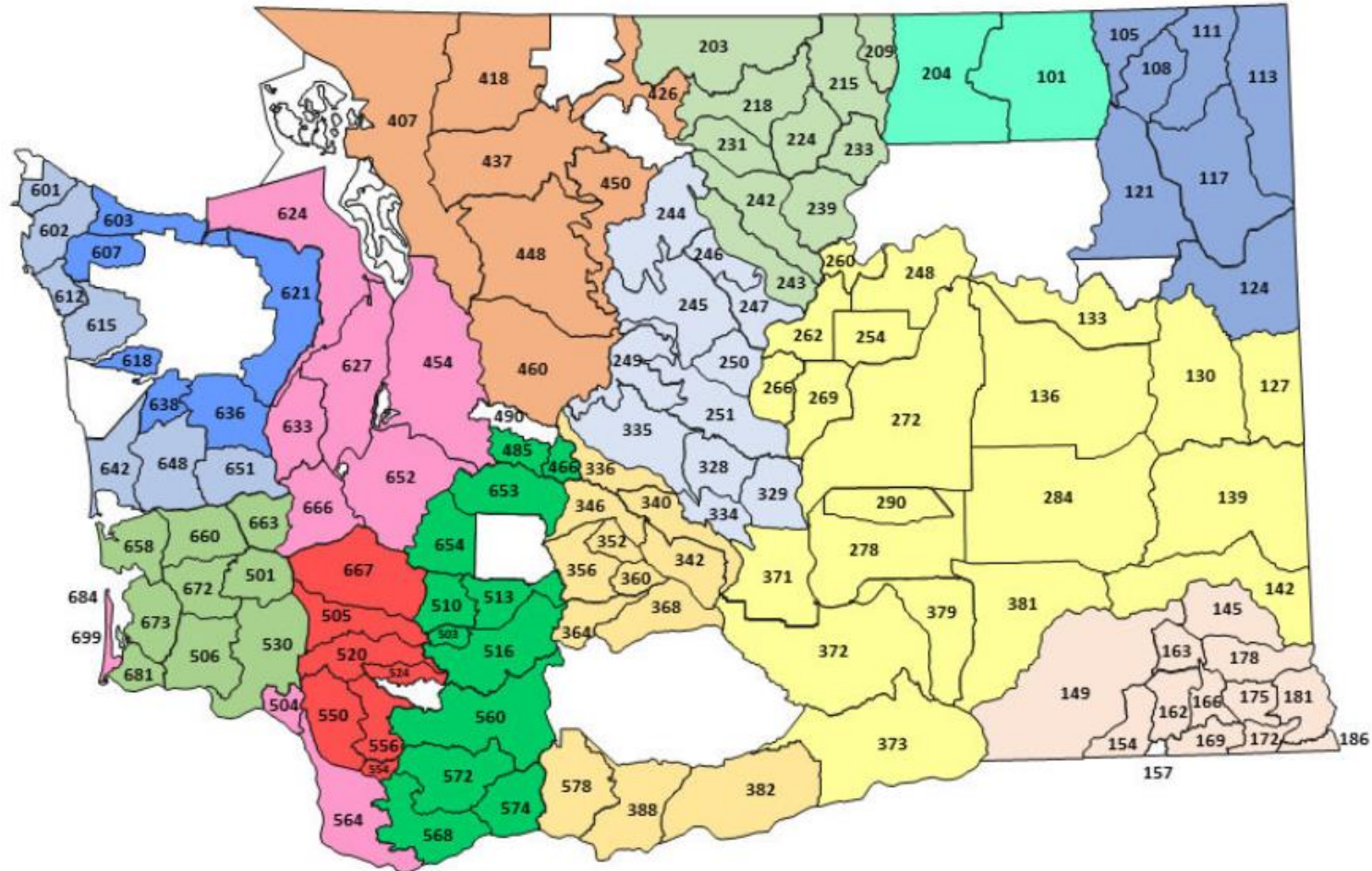
Carrie Lowe
Stefanie Bergh
Scott Fitkin
Bryan Murphie



Washington
Department of
**FISH and
WILDLIFE**

Proposed BBMUs

From 9 to 14 BBMUs

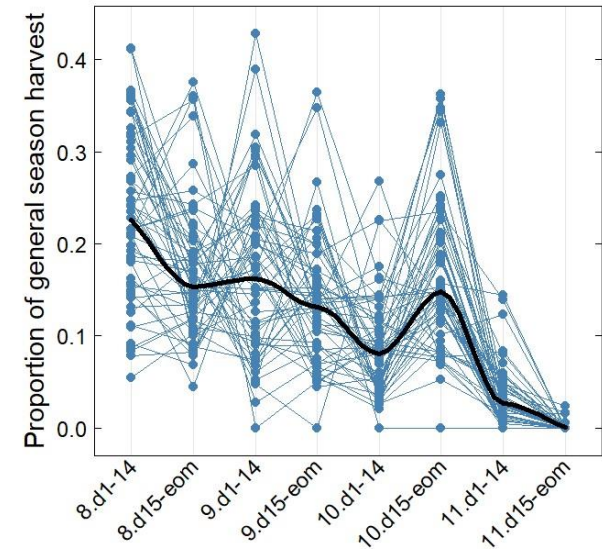


* BBMUs may change based on continued Regional input



Adaptive Management

- Estimate female mortality rates within BBMUs at **3-year intervals**
 - Incorporates environmental variation and variations in hunter effort
 - Emergency rules can always go into effect during poor mast/fruit years
- Adjust hunting seasons during rule-making: bag limits, season dates
 - General season recommendations:
 - Aug 15 – Nov 15
 - 2 bear bag limit
 - If BBMU-level female mortality $\leq 8\%$ IGR:
 - No change to general season recommendations
 - If BBMU-level female mortality $> 8\%$ IGR:
 - Reduce bag limit AND
 - Adjust season dates – 2-week intervals, starting with season opening



Example Framework

	BBMU 1
Mortality Rate	8%
Bag Limit	2
Season Open	15-Aug
Season Close	15-Nov

- General season recommendations:
 - Aug 15 – Nov 15
 - 2 bear bag limit



Example Framework

	BBMU 1	BBMU 2
Mortality Rate	8%	<8%
Bag Limit	2	2
Season Open	15-Aug	15-Aug
Season Close	15-Nov	15-Nov

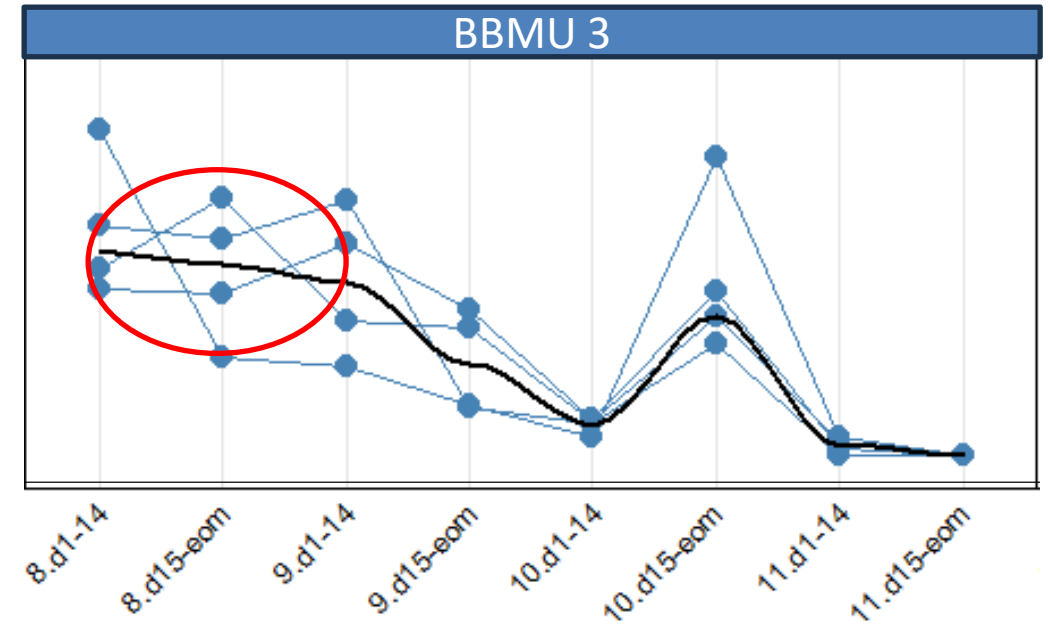
- General season recommendations:
 - Aug 15 – Nov 15
 - 2 bear bag limit



Example Framework

	BBMU 1	BBMU 2	BBMU 3
Mortality Rate	8%	<8%	>8%
Bag Limit	2	2	1
Season Open	15-Aug	15-Aug	1-Sept
Season Close	15-Nov	15-Nov	15-Nov

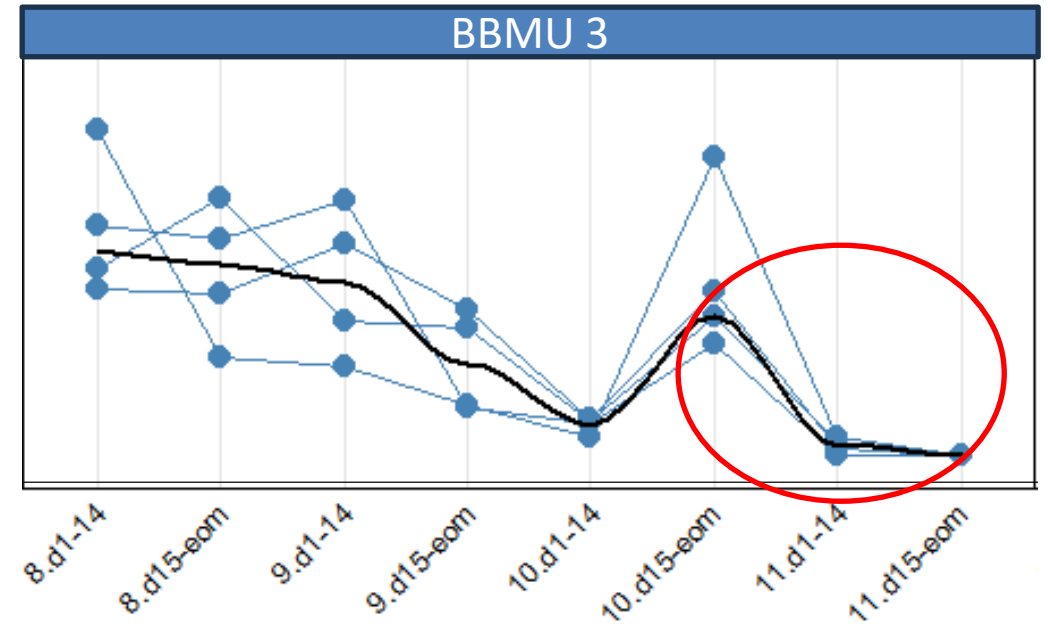
- General season recommendations:
 - Aug 15 – Nov 15
 - 2 bear bag limit



Example Framework

	BBMU 1	BBMU 2	BBMU 3
Mortality Rate	8%	<8%	>8%
Bag Limit	2	2	1
Season Open	15-Aug	15-Aug	15-Aug
Season Close	15-Nov	15-Nov	15-Oct

- General season recommendations:
 - Aug 15 – Nov 15
 - 2 bear bag limit

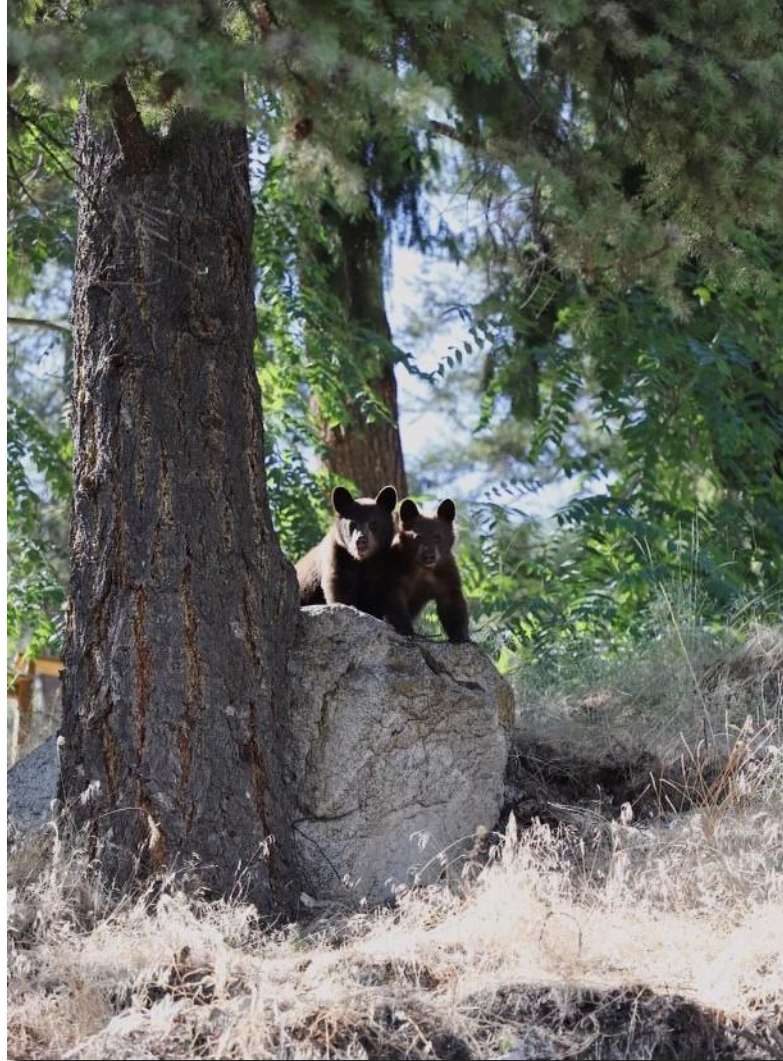


Additional Rule Change Proposals

- Make it illegal to shoot cubs and females with cubs
- Insert date for mandatory tooth submission deadline



Questions?



Proportional Harvest by BBMU 2020-2023

