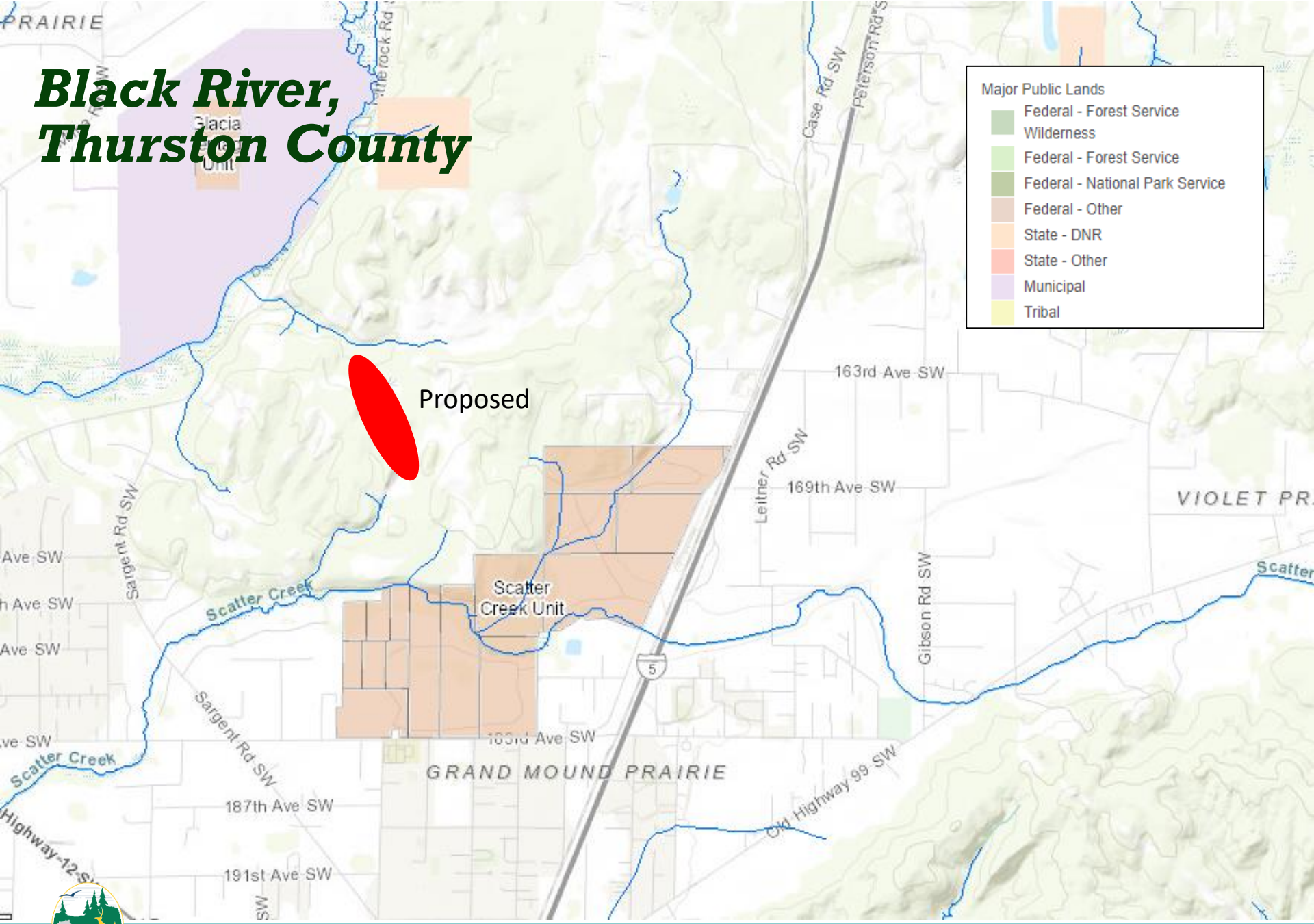


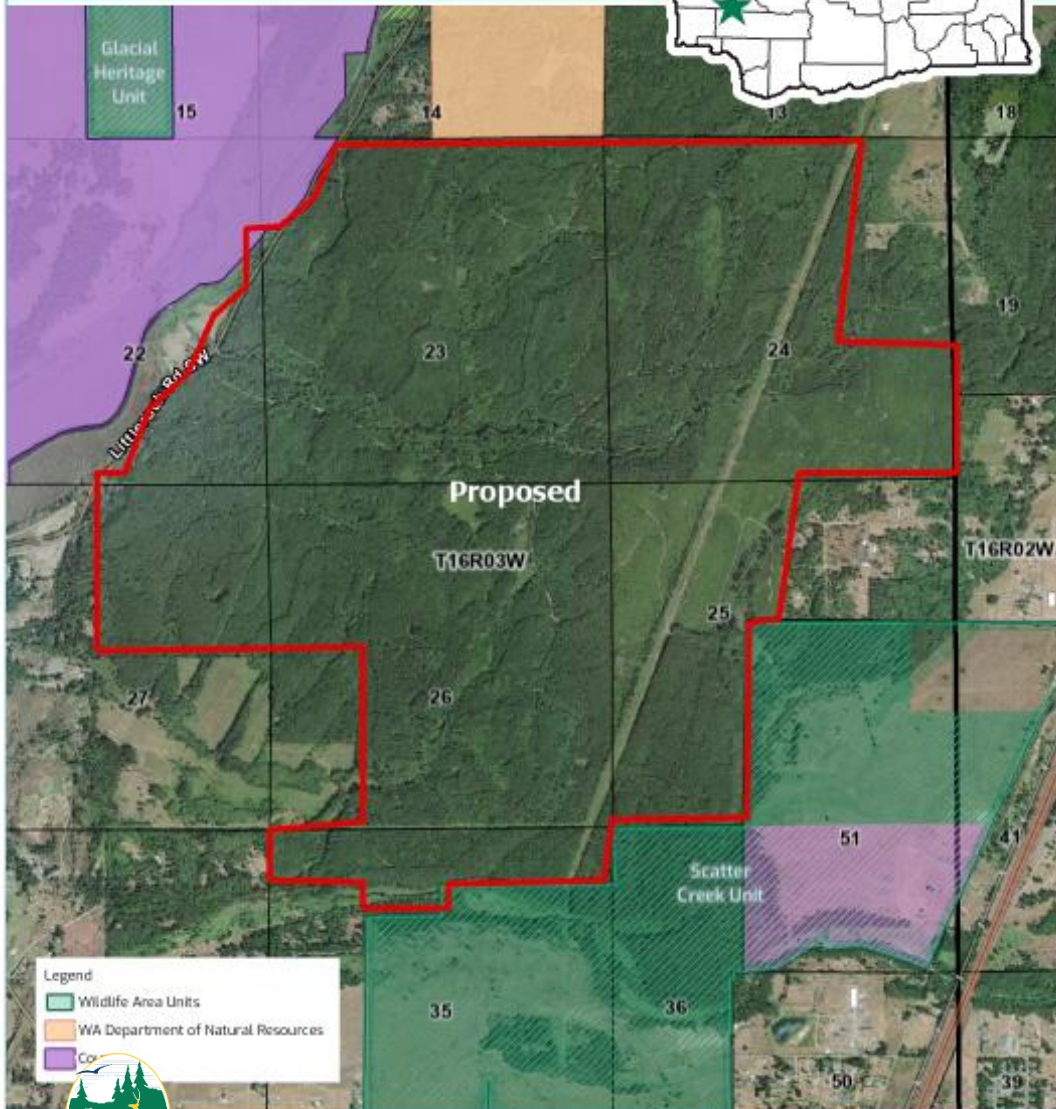
Black River, Thurston County



Black River

County: Thurston

Parcel Map



Black River, Thurston County

- 2,382 acres
- Scatter Creek Vicinity
- Pass Thru to partner
- Possible area for future wildlife crossing over I-5





Black River, Thurston County

- Creates the largest wildlife corridor region between Black River riparian, Scatter Creek Wildlife Area, Capital Forest, and the Glacial Heritage Preserve
- Habitat: conifer forest
- Species: elk, Columbian black-tailed deer, coho, Townsend big eared bat, coastal cutthroat
- Recreation: this conservation easement will not include recreation

