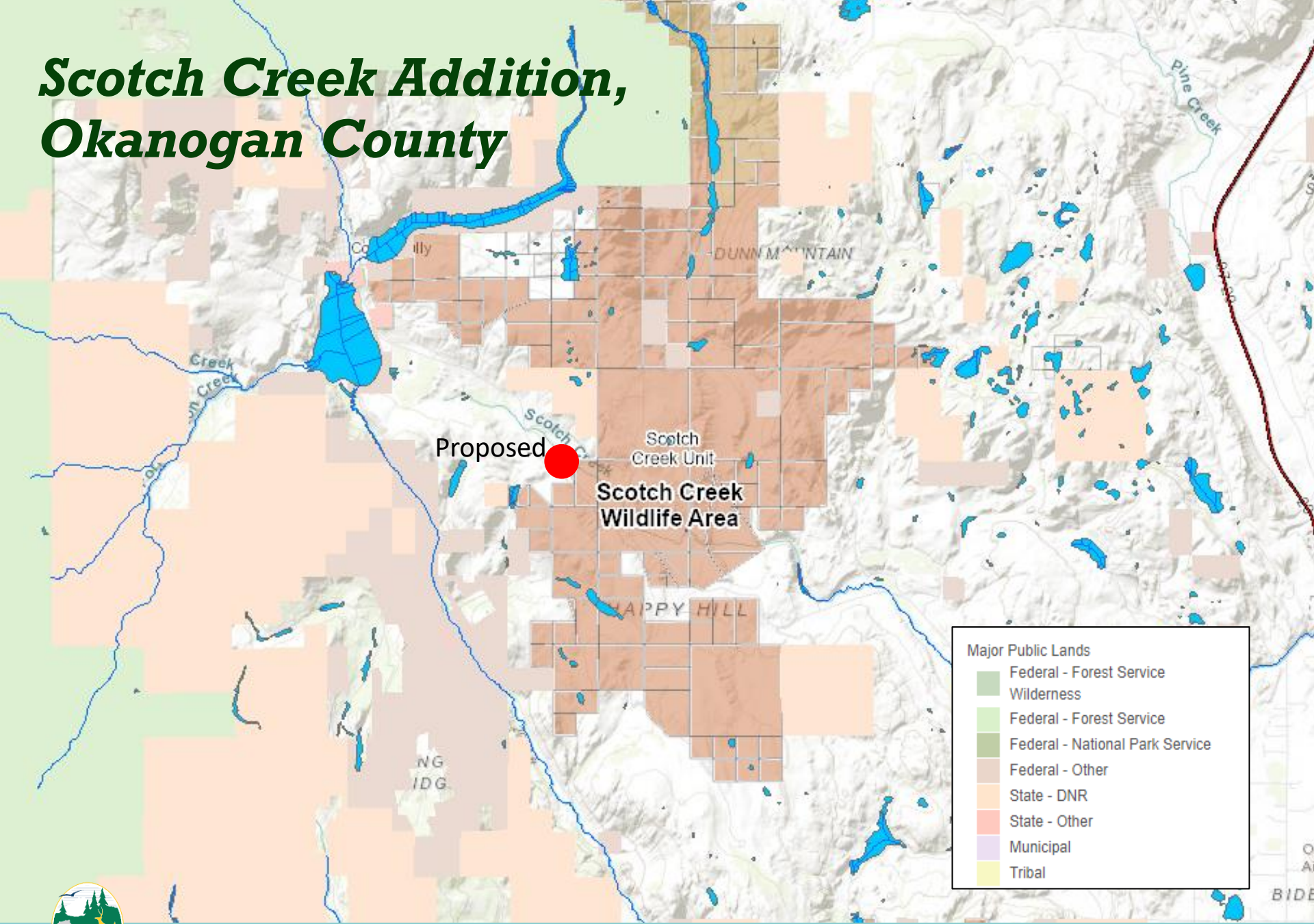


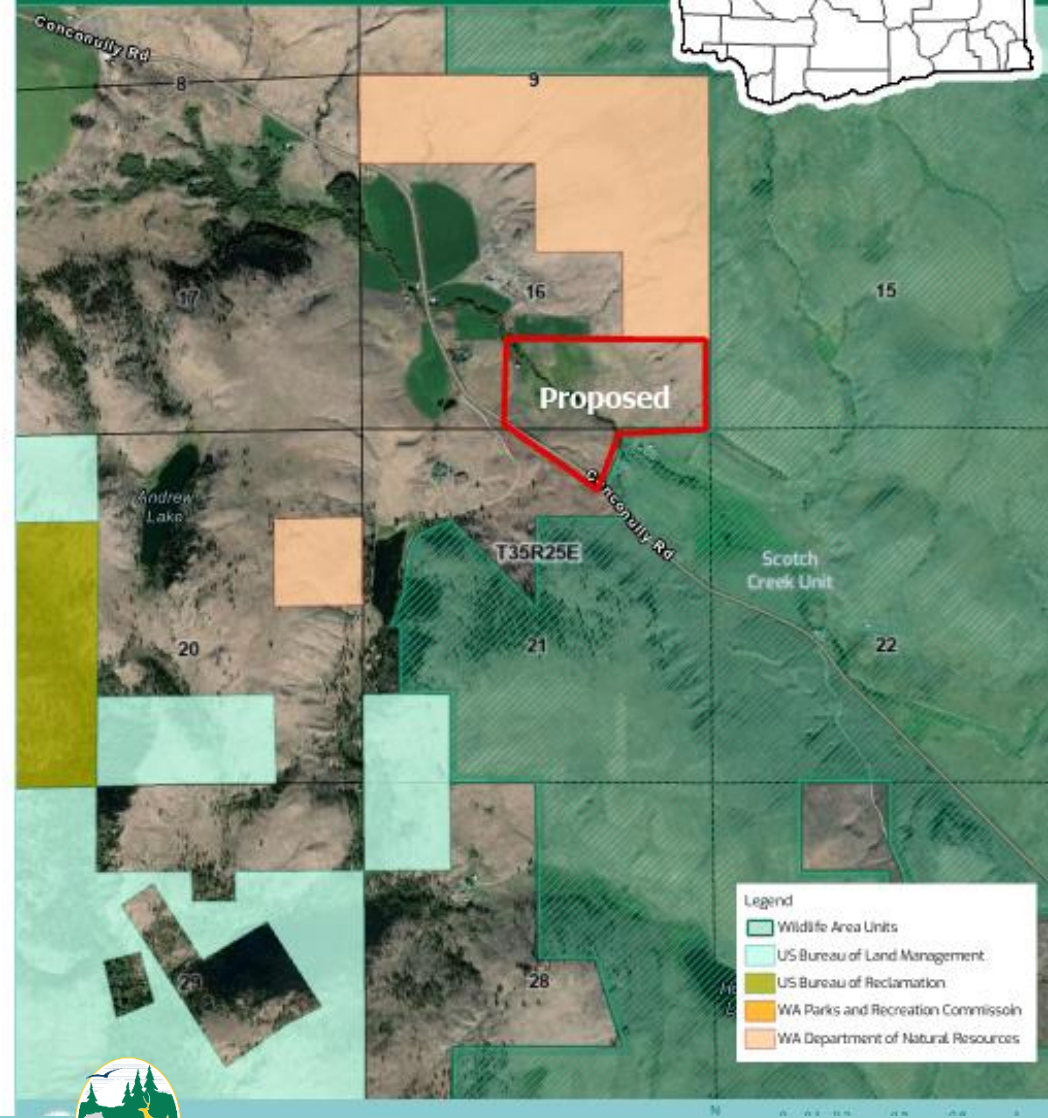
# Scotch Creek Addition, Okanogan County



# Scotch Creek Addition

County: Okanogan

Parcel Map



## ***Scotch Creek Addition, Okanogan County***

- 93 acres
- Scotch Creek Unit
- Scotch Creek Wildlife Area





# ***Scotch Creek Addition, Okanogan County***

- Habitat: grassland, birch dominated riparian, emergent wetland
- Species: white-tailed deer, mule deer, primary winter forage for State Endangered Columbian sharp-tailed grouse, which actively use these parcels, gray wolf
- Recreation: excellent wildlife viewing and hunting opportunities and will give the public the chance to experience high-quality riparian and riverine habitats

