

# Black Bear Framework Option

Dr. Ilai Keren  
Dr. Brian Kertson  
Dr. Donny Martorello

Dr. Lindsay Welfelt  
Dr. Stephanie Landry  
Rich Beausoleil  
Anis Aoude

Carrie Lowe  
Stefanie Bergh  
Scott Fitkin  
Bryan Murphie



# Washington's Proposed Framework

Objective → stable bear populations at the BBMU-scale

- ✓ create adaptive management action(s) if objectives are not being met

**Female mortalities / habitat x density** ≤ intrinsic growth rate



Harvest (+wound loss\*)  
Timber, Conflict



Female (>1yr)  
population size

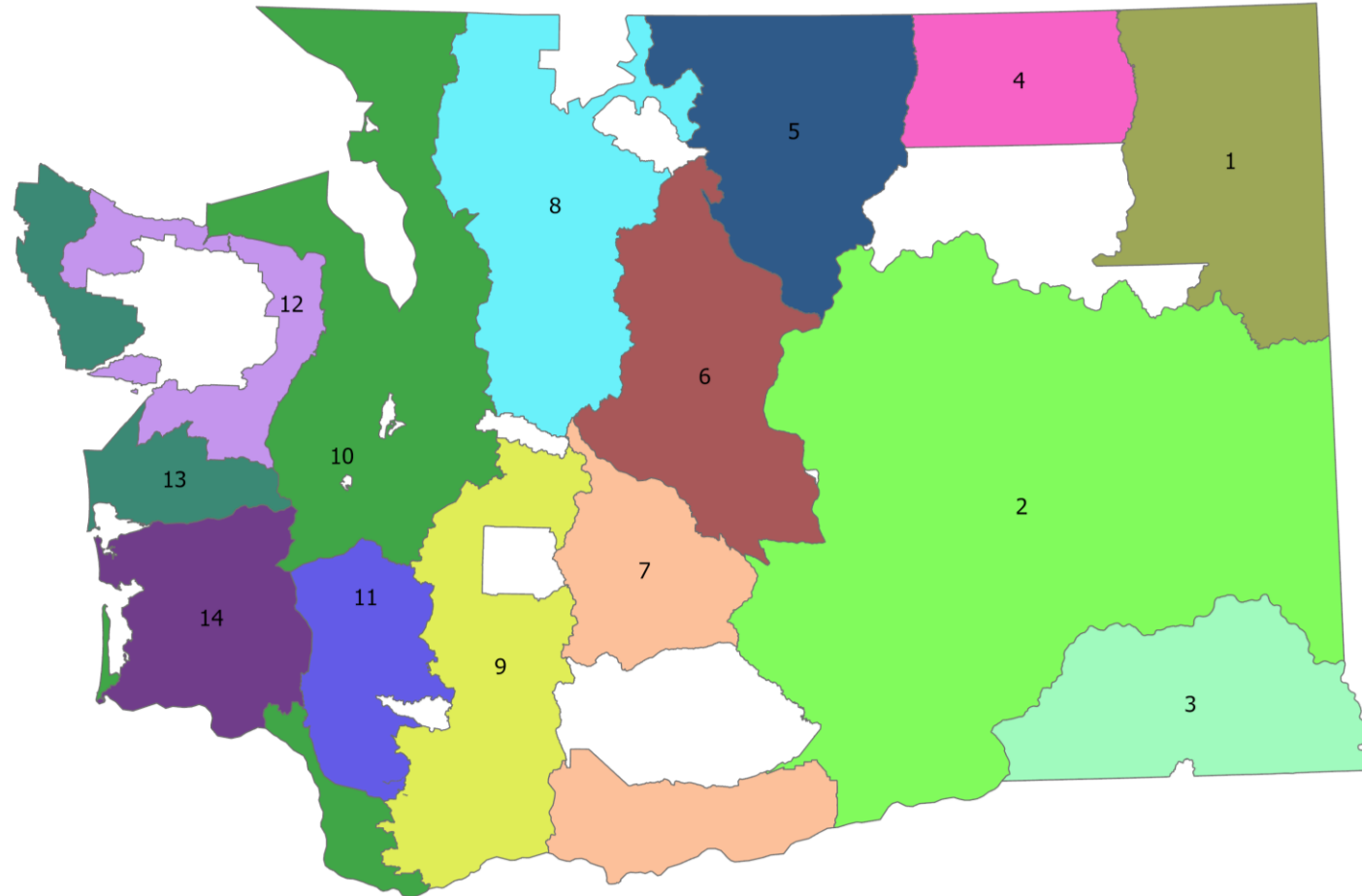


Natural,  
Other (Roadkill, Poaching,...)



# Proposed Black Bear Management Units

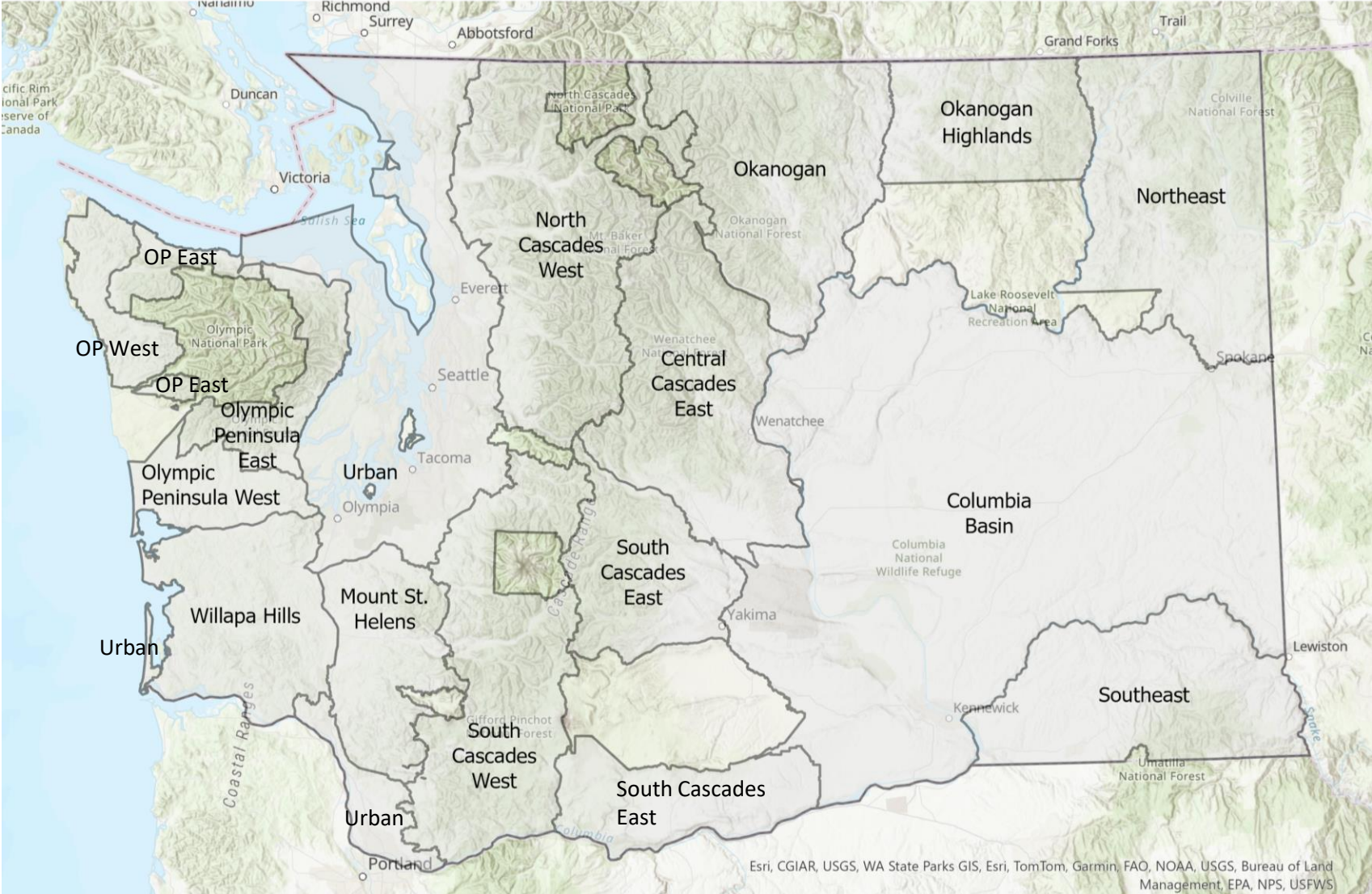
From 9 to 14 BBMUs



\* BBMUs may change based on continued Regional input



# Black Bear Management Units



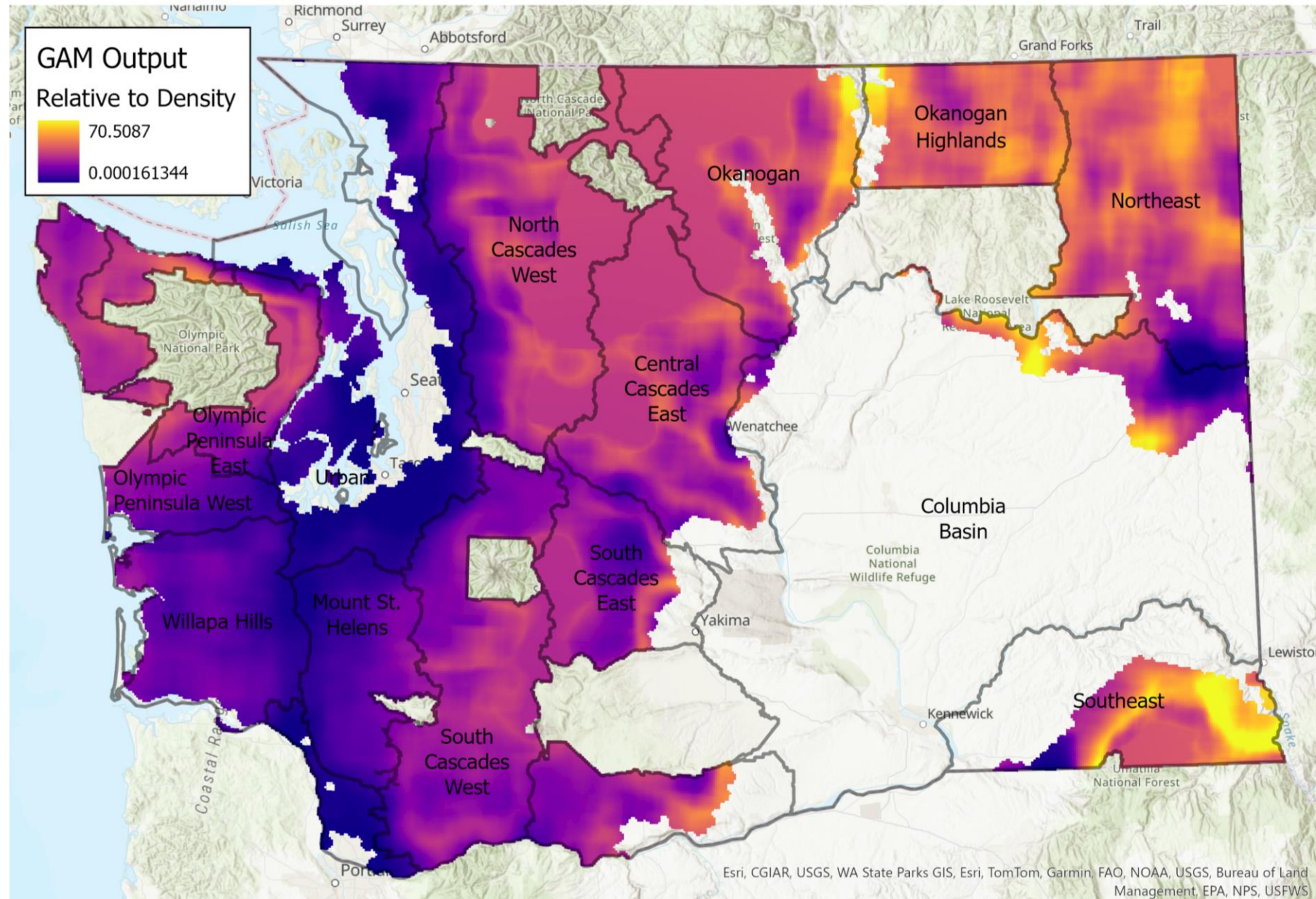


# Black Bear Management Units

BBMUs overlaying the density model output cropped to bear habitat.

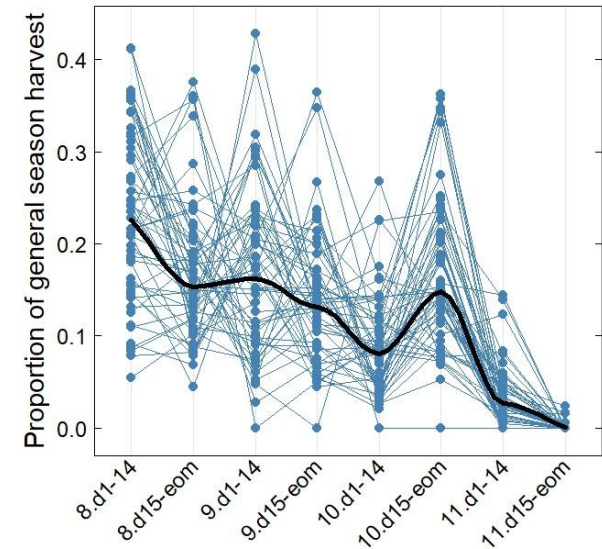
Note the Urban BBMU – low predicted density and high human presence (low social capacity)

Note the Columbia Basin BBMU – non-habitat



# Adaptive Management

- Estimate female mortality rates within BBMUs at **3-year intervals**
  - Incorporates environmental variation and variations in hunter effort
  - Emergency rules can always go into effect during poor mast/fruit years
- Adjust hunting seasons during rule-making: bag limits, season dates
  - General season recommendations:
    - Aug 1 – Nov 15
    - 2 bear bag limit
  - If BBMU-level female mortality  $\leq 8\%$  IGR:
    - No change to general season recommendations
  - If BBMU-level female mortality  $> 8\%$  IGR:
    - Reduce bag limit AND
    - Adjust season dates – 2-week intervals, starting with season opening
      - *Unless we have a different management objective (i.e., Urban BBMU)*



# Example Framework

	BBMU 1
Mortality Rate	8%
Bag Limit	2
Season Open	01-Aug
Season Close	15-Nov

- General season recommendations:
  - Aug 1 – Nov 15
  - 2 bear bag limit



# Example Framework

	BBMU 1	BBMU 2
Mortality Rate	8%	<8%
Bag Limit	2	2
Season Open	01-Aug	01-Aug
Season Close	15-Nov	15-Nov

- General season recommendations:
  - Aug 1 – Nov 15
  - 2 bear bag limit

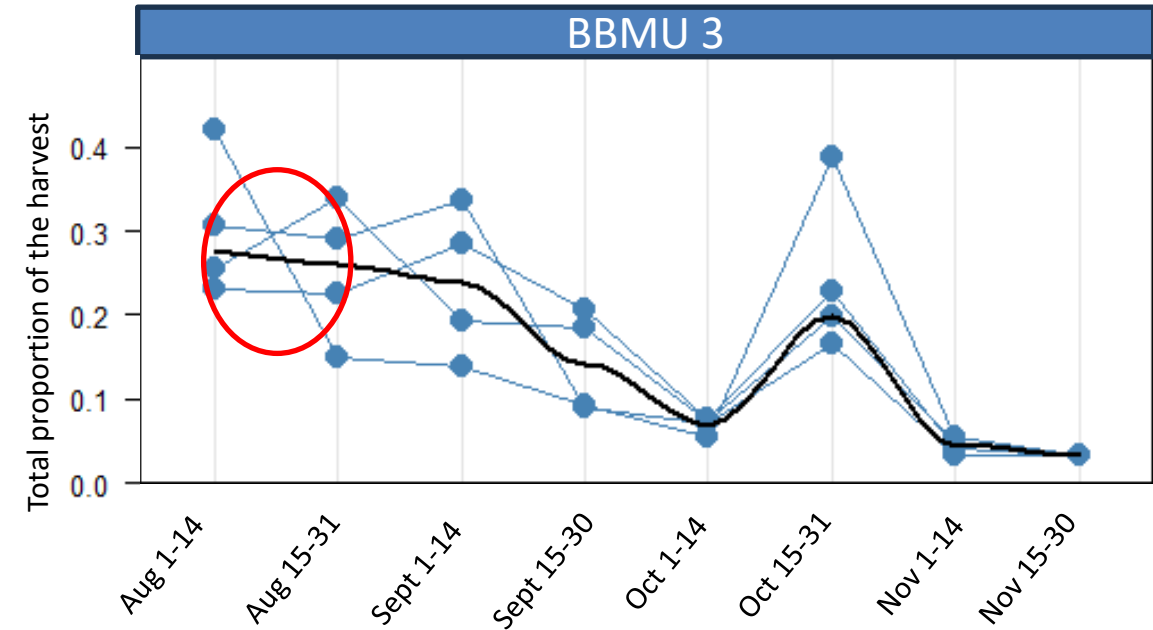




# Example Framework

	BBMU 1	BBMU 2	BBMU 3
Mortality Rate	8%	<8%	>8%
Bag Limit	2	2	1
Season Open	01-Aug	01-Aug	15-Aug
Season Close	15-Nov	15-Nov	15-Nov

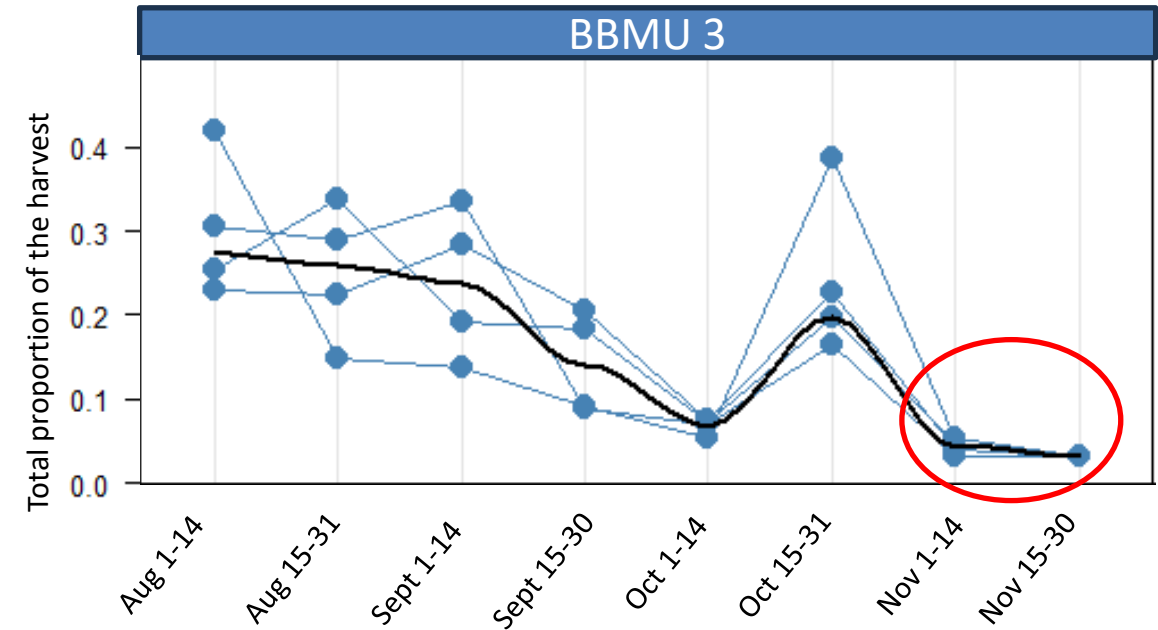
- General season recommendations:
  - Aug 1 – Nov 15
  - 2 bear bag limit



# Example Framework

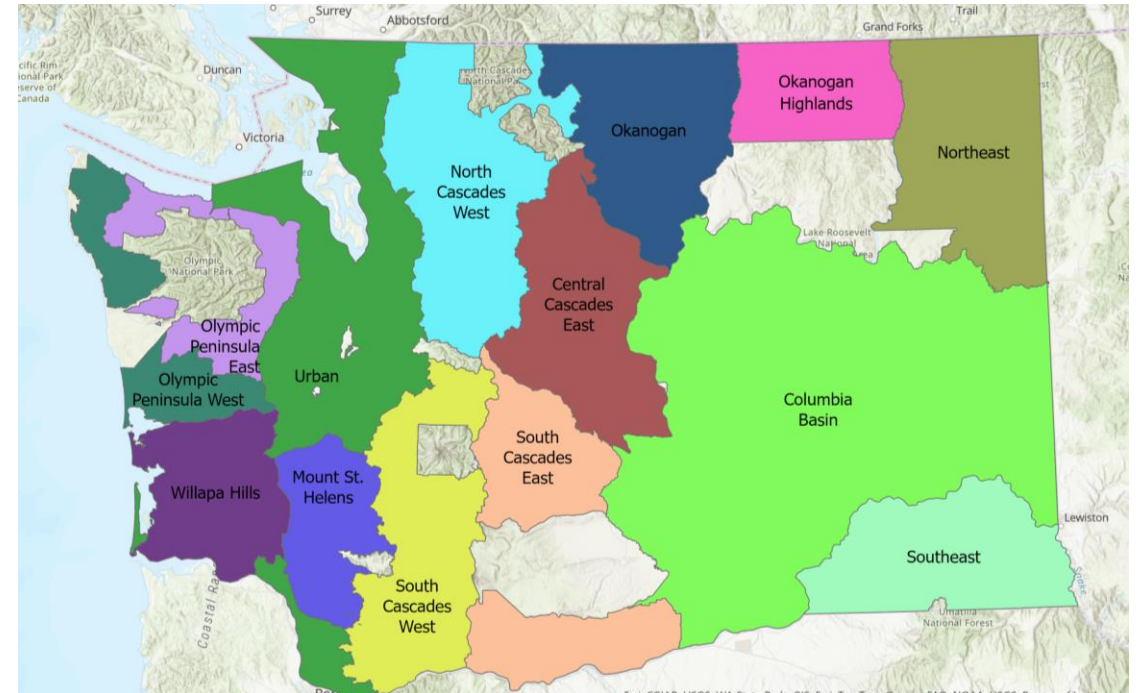
	BBMU 1	BBMU 2	BBMU 3
Mortality Rate	8%	<8%	>8%
Bag Limit	2	2	1
Season Open	01-Aug	01-Aug	15-Aug
Season Close	15-Nov	15-Nov	01-Nov

- General season recommendations:
  - Aug 1 – Nov 15
  - 2 bear bag limit



# Female Mortality Rates

BBMU	Female Mortality Rates
Okanogan Highlands	6%
Northeast	5%
<i>Columbia Basin*</i>	NA
Southeast	7%
Okanogan	7%
Central Cascades East	6%
South Cascades East	5%
North Cascades West	5%
<i>Urban*</i>	20%
South Cascades West	6%
Mt. St. Helens	7%
<b>Willapa Hills</b>	<b>15%</b>
Olympic West	8%
Olympic East	5%



\*BBMU is managed to not maximize bear populations in urban or non-habitat areas

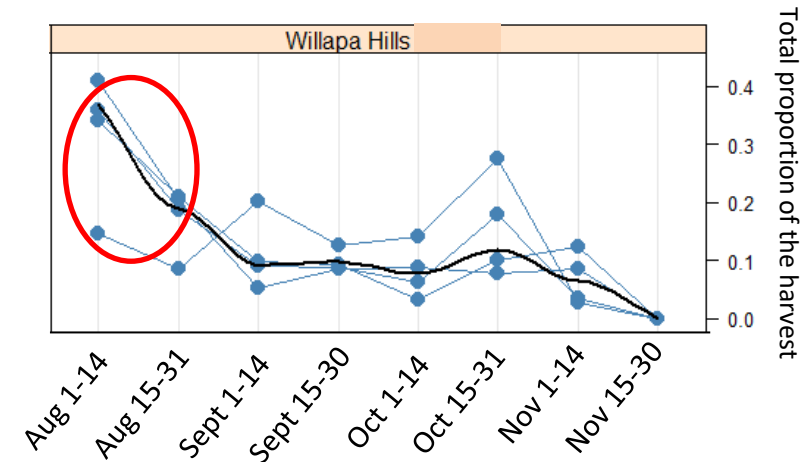
$$\frac{\text{harvest} * 1.1 + \text{timber} + \text{conflict}}{(\text{female density}^a \text{ model estimates})} \leq 8\% \text{ IGR}$$

<sup>a</sup> counting >1 year old bears



# Recommended Season Setting by BBMU

BBMU	Female Mortality Rates	Bag Limit	Season Dates
Northeast	5%	2	August 1 - November 15
<i>Columbia Basin*</i>	NA	2	<i>August 1 - November 15</i>
Southeast	7%	2	August 1 - November 15
Okanogan Highlands	6%	2	August 1 - November 15
Okanogan	7%	2	August 1 - November 15
Central Cascades East	6%	2	August 1 - November 15
South Cascades East	5%	2	August 1 - November 15
North Cascades West	5%	2	August 1 - November 15
<i>Urban*</i>	20%	2	<i>August 1 - November 15</i>
South Cascades West	6%	2	August 1 - November 15
Mt. St. Helens	7%	2	August 1 - November 15
<b>Willapa Hills</b>	<b>15%</b>	<b>1</b>	<b>August 15 - November 15</b>
Olympic West	8%	2	August 1 - November 15
Olympic East	5%	2	August 1 - November 15



\*BBMU is managed to not maximize bear populations in urban or non-habitat areas

+No bear harvest in GMUs 157, 410-417, 419-424, 490, 522, and 655



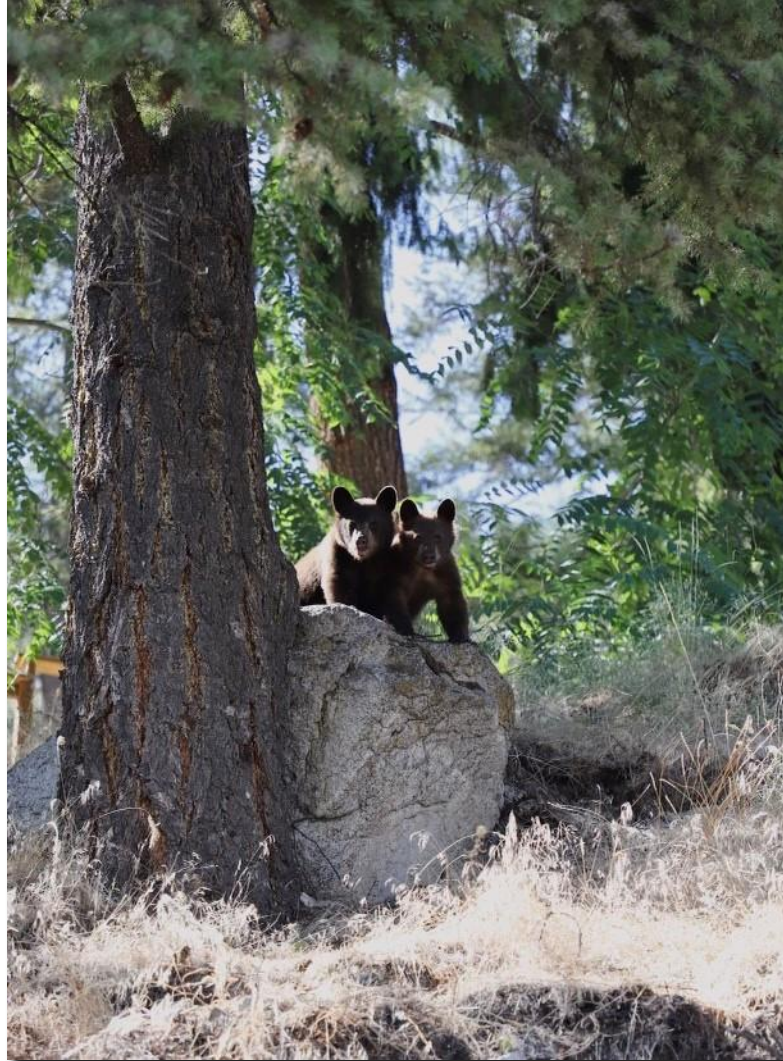
# Additional Rule Change Proposals

- Make it illegal to shoot cubs and females with cubs
- Insert date for mandatory tooth submission deadline





# Questions?



# Proportional Harvest by BBMU\* 2020-2023

\*Urban and North Cascades West BBMUs have been changed and were not updated here. Please only use this as guidance for your decision-making.

