



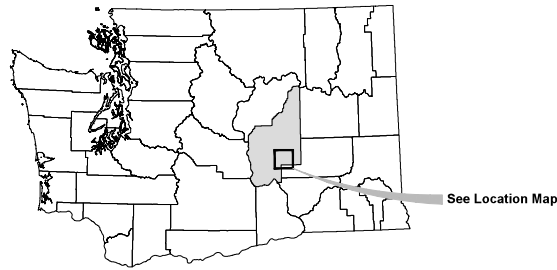
US-WA-320-7 WINCHESTER

SHEET INDEX

1	Cover Sheet
2	Definitions & Legend
3	Existing Conditions
4	Sheet Index
5	Site Plan
6	Site Plan
7	Site Plan
8	Site Plan Alternative 1
9	Profiles
10	Profiles
11	Ditch Profile
12	Sections
13	WCS Table & Section
14	WCS Details
15	Ditch Cross Sections
16	Ditch Cross Sections
17	WCS Sections
18	WCS Sections

VICINITY MAP

WASHINGTON



PROJECT LOCATION

Section: 12, 13, 17, 18
Township: T 18 N
Range: R 25, 26 E
Meridian: Willamette
County: Grant
State: Washington

SURVEY DATUM

Horizontal: NAD 83
US State Plane Washington North Zone
Vertical: NAVD83
Units: US Feet

MAP DATA

Contour Interval: 1 Foot
Aerial Photo: Google, N/AIP

LOCATION MAP



NOT TO SCALE

EMERGENCY CONTACT INFORMATION

In case of fire: CALL 911

PROJECT DIRECTORY

Ducks Unlimited, Inc.
Pacific Northwest Office
11805 NE 99th St, Suite 1300
Vancouver Washington 98662
Ph. (360) 885-2011

TO THE BEST OF MY PROFESSIONAL
KNOWLEDGE, JUDGEMENT, AND BELIEF,
THESE PLANS MEET THE APPLICABLE
NRCS PRACTICE STANDARDS

PRELIMINARY

Unauthorized Changes & Uses
The engineer preparing these plans will not be responsible for, or liable for, unauthorized changes to or uses of these plans. All changes must be in writing and must be approved by the preparer of these plans.



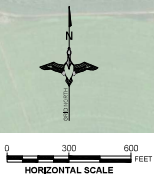
REV. NO.	DESCRIPTION	DATE	APPROVED
▲			
▲			
▲			
▲			



PROJECT NO. **US-WA-320-7** DATE: **10/23/2024**
WINCHESTER

DESIGNED BY: BAH
DRAWN BY: ROR
SURVEYED BY: BAH
CHECKED BY: -
APPROVED BY: SHEET NO.

1 of 18



Unauthorized Changes & Uses
The engineer preparing these plans will not be responsible for, or liable for, unauthorized changes to or uses of these plans. All changes must be in writing and must be approved by the preparer of these plans.

PRELIMINARY

REVISIONS			
REV. NO.	DESCRIPTION	DATE	APPROVED



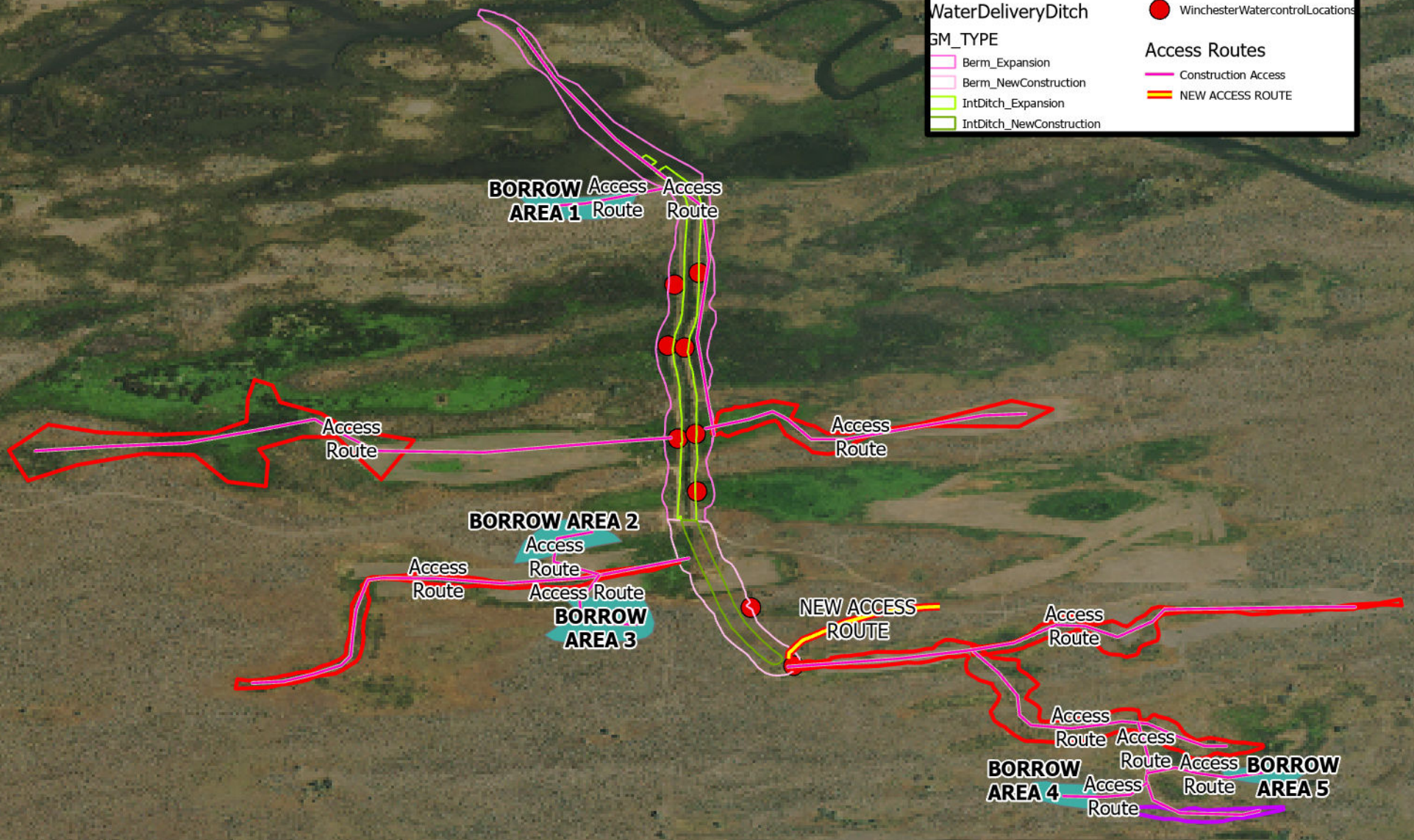
PROJECT NO. **US-WA-320-7** DATE: **10/23/2024**
WINCHESTER

EXISTING CONDITIONS

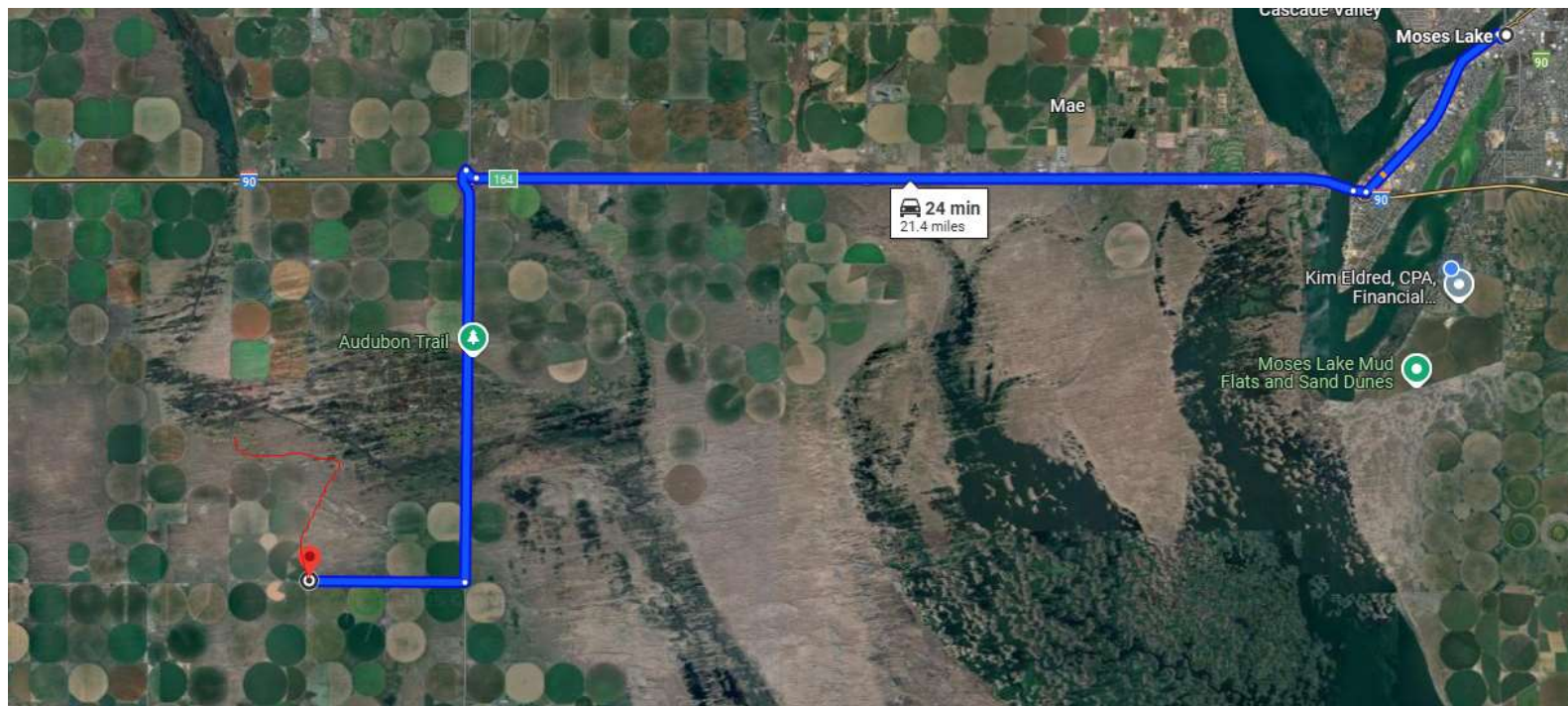
DESIGNED BY: BAH
DRAWN BY: ROR
SURVEYED BY: BAH
CHECKED BY: -
SHEET NO.:

Legend

 NewConstruction_Dike	 BORROW AREAS
 Existing_WetlandBasins	 WinchesterWatercontrolLocations
 WaterDeliveryDitch	
GM_TYPE	Access Routes
 Berm_Expansion	 Construction Access
 Berm_NewConstruction	 NEW ACCESS ROUTE
 IntDitch_Expansion	
 IntDitch_NewConstruction	



Map with directions



Traveling from Moses Lake, WA, take interstate 90 west for 10 miles and take the Dodson Road exit. Travel south on Dodson Road for approximately 5 miles to the intersection of Dodson Road x Road 4 Southwest. Head west on Road 4 Southwest for 2 miles until you reach the substation that is on the north side of the road. Follow the two track that is just north of the substation for approximately 3 miles until you reach the Winchester Regulated Access Area parking lot.