

Conservation Incentives: An Overview

Jeff Azerrad
Environmental Planner



April 10, 2025



Habitat Connectivity and Conservation Incentives

Overview

- Federal
- State
- Local



Market-based Solutions



Photo courtesy of USFWS





Federal Incentive Programs

Farm Bill Conservation Programs

1. Working Lands
2. Conservation Reserve Program
3. Easements
4. Partnerships



“4 Buckets”



WORKING LANDS PROGRAMS

NRCS Funded:

EQIP (Environmental Quality Incentives Program)

CSP (Conservation Stewardship Program)

CIG (Conservation Innovation Grants)

WLFW (Working Lands for Wildlife)



Environmental Quality Incentives Program (EQIP)

- Technical and Financial Assistance
- Field and specialty crops, livestock and grazing, and pvt. non-industrial forestry.
- EQIP goal to enhance natural resources, including wildlife habitat.



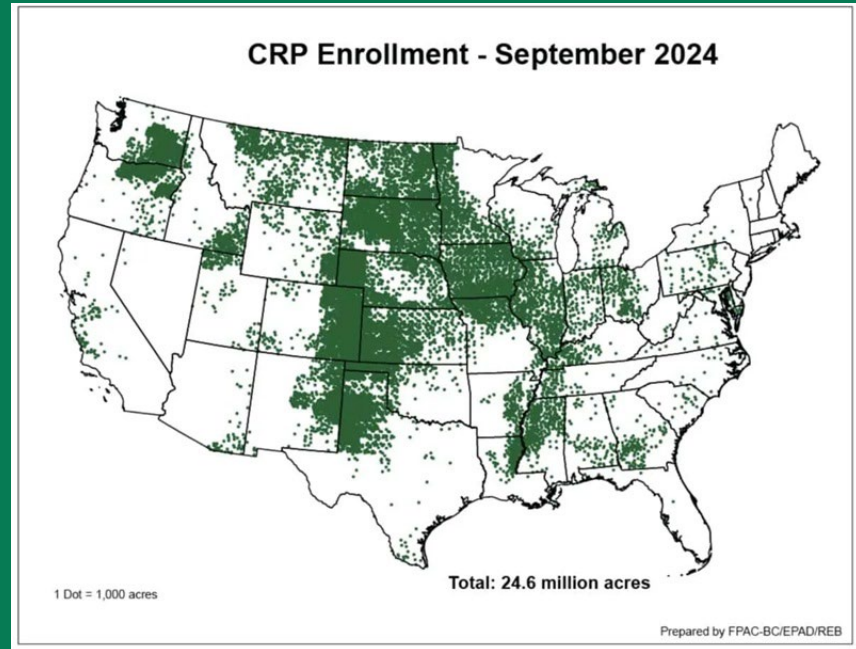
Conservation Stewardship Program (CSP)

- Technical and Financial Assistance
- Cropland, grasslands, pasture, rangelands, non-industrial forestlands, and other pvt ag lands.
- Implements plans to expand the benefits of existing implemented programs.



CONSERVATION RESERVE PROGRAM (CRP)

- FSA Funded
- Cover and plantings
- Payments and cost share
- Eligibility



Conservation Reserve Program

- General sign up
- Continuous CRP
 - » State Acres for Wildlife Enhancement (mostly used in eastern WA)
 - » Conservation Reserve Enhancement Program (mostly used in western WA)



EASEMENT PROGRAMS

NRCS Funded



Easement Programs

- Agriculture Conservation Easement Program (ACEP)
- Healthy Forests Reserve Program



Other Federal Easement Programs

- Forest Legacy Program
 - » Administered by USFS in partnership with State agencies (DNR in WA)
 - » Conserves environmentally important forests threatened by conversion to non-forest uses through easements.
 - » Opportunity to enroll large tracts of working forest
 - » Option for permanent easement.





State Administered Programs

State Managed Easement Programs



Farm

- Farmland Preservation Grant (RCO)
- Farmland Protection and Land Access Program (WCC)

Forestry

- Forestland Preservation Grant (RCO)
- Community Forest Trust Program (DNR)



Other State Managed Incentive Programs



- Service Forestry (DNR)
- Natural Resource Investments (SCC)
- Carbon Credits and Payments for Ecosystem Services (RCO)





Locally Administered Programs

Local Incentive Programs & Voluntary Measures

- Transfer (Purchase) of Development Rights (TDR)
- Current Use Taxation Programs
- Open Space Tax Programs
- Conservation Futures
- Conservation Easements
- Many more programs!



Conservation Program Explorer Tool

THE CONSERVATION PROGRAM EXPLORER

The Conservation Program Explorer is a web tool available at www.ctoclc.org for landowners or agency staff in Washington (Oregon coming soon) to quickly discover which incentive programs are available based on their county and the type of program they are interested in. The incentives span across both governmental and non-governmental organizations.

CONTACT US

Rachel Santa Olalla, Program Lead:
rachelo@peaksustainability.com

- Get your conservation incentive program listed in the tool
- Let us know of other incentive programs that are not listed.
- Share how this tool could better serve your needs
- Collaborate with us!

Visit us online at:
www.ctoclc.org

CONSERVATION PROGRAM EXPLORER

Are you too busy tending to your farm or forest to navigate the complex variety of incentive programs available to help you manage your land?

That's why we made it easy for you to choose.

Cascades to Coast Landscape Collaborative
designing for resilience

OUR PARTNERS

USE THE SIMPLE DROP DOWN SELECTION TOOL (SHOWN BELOW) TO EASILY FIND A SUITABLE INCENTIVE PROGRAM FOR YOUR WORKING FOREST OR AGRICULTURAL LAND.

PROGRAM AND CONTACT INFORMATION

WA Farm Forestry Association
WA Forest Protection Association
WA Department of Natural Resources
WA Department of Fish & Wildlife
WA State Recreation & Conservation
Northwest Climate Science Center
US Environmental Protection Agency
US Forest Service
Audubon Washington
...and many more!

<https://www.ctoclc.org/incentives/olympic-washington>

Cascades to Coast Landscape Collaborative

Home About Partners Resources

Olympic WA Conservation Programs

[Back to previous page](#)

Use the filters to see what programs are relevant for your land.

County: Type of land:

Program benefits: Searching for water-focused programs?

(Optional) Enter Keyword [Search](#) [Reset Search](#)

Landowner conservation programs

95 programs found

Current Use: Forest and Agricultural Land

Provider: Clallam County Program benefits: Financial

Lower your property taxes by enrolling your forest or agricultural land in current use taxation.

[More details](#)

Riparian Grant Program (RGP)

Provider: Washington State Conservation Commission Program benefits: Financial

Funding for voluntary projects to restore and protect

Get Support

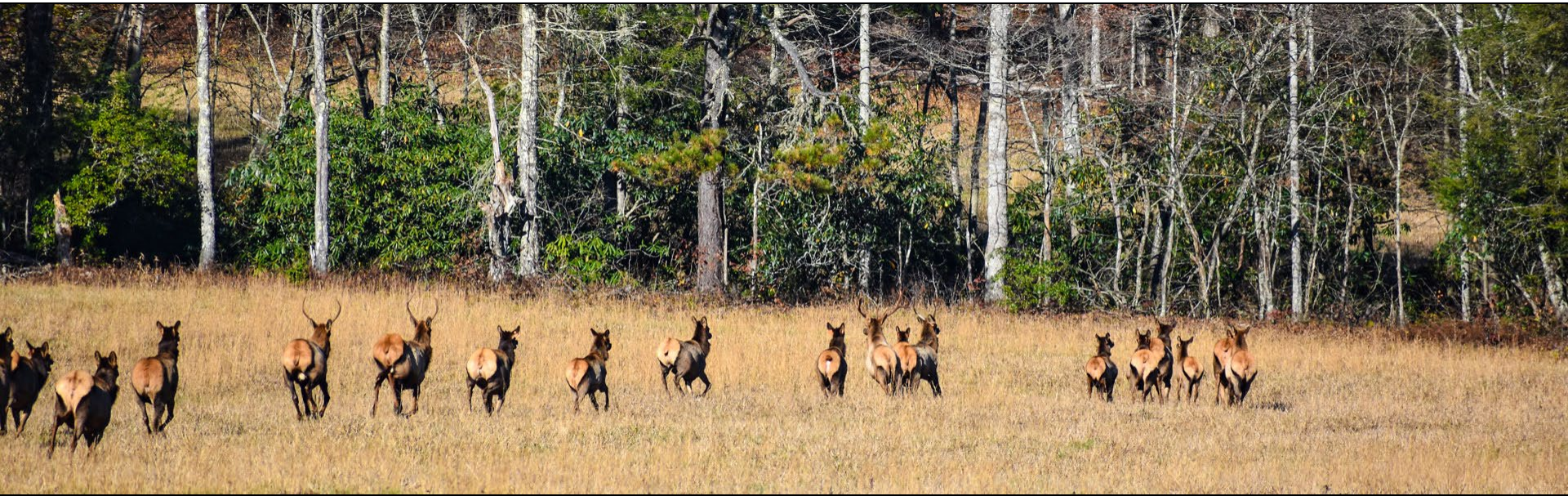
Developing a forest, agricultural, or conservation plan helps identify and prioritize objectives for landowners. These objectives can determine what type of programs to search for. [Supporting organizations](#) your area often provide free consultation and planning. They can also help you use the Conservation Program Explorer tool effectively.

Landscape Character

See how your land fits in the broader context of regional conservation, ecosystem services, and working lands' values across the landscape through our [interactive map tool](#), which could help you determine which program is a good fit for you!



Thanks!



Next Steps

Washington Habitat Connectivity Action Plan

- Report Review – May 1 through May 23
- Report finalized – June 30

Cascades to Coast Landscape Collaborative (CCLC)

- Roll up responses from break out groups (themes)
- Report out
- Send survey to you all
- Find high priority actions to collaboratively tackle?

