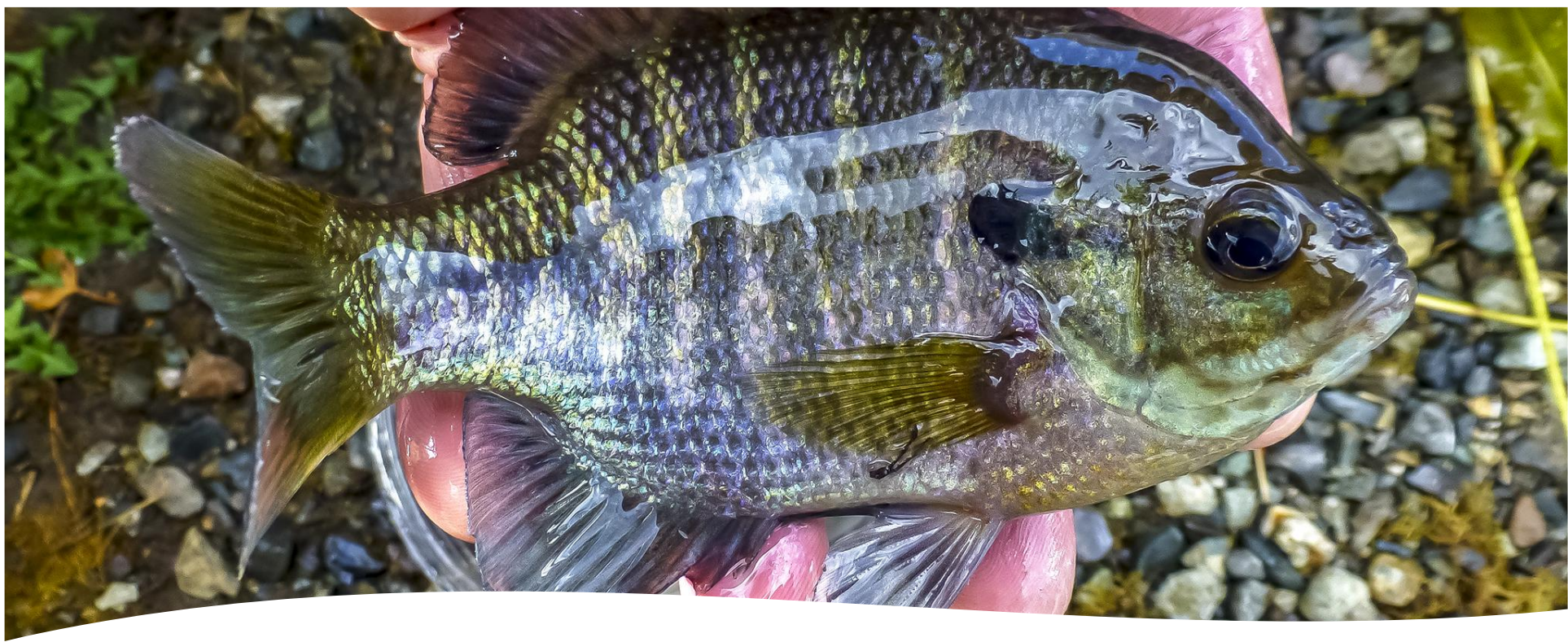


Non-Native Gamefish and Fisheries Policy

(2024 review)

Steve Caromile
Inland Fish Program Manager





AGENDA

- Legislative Guidance
- Policy Background
- Reporting Requirements
- Questions



Legislative Guidance- 2SB 1579

Sec. 2. A new section is added to chapter 77.08 RCW (*actually* 77.12.085) to read as follows:

The commission shall adopt rules to liberalize bag limits for bass, walleye, and channel catfish in all anadromous waters of the state in order to reduce the predation risk to salmon smolts.



FWC Guidance

- **Blue Sheet** (Advisory Group Mission)

The Ad-hoc Non-native Gamefish and Fisheries Advisory Group will consult with fisheries managers and agency leadership and provide recommendations to the department with the objective of developing a policy that:

- Supports the protection and recovery of native species
- Systematically applies available science to what is known about non-native species impacts on vulnerable native species and attempt to fashion fisheries that meet the needs and interests of non-native gamefish anglers where possible.



Species Guidance

- Policy guidance is for non-native gamefish
 - [WAC 220-300-380: Game fish classification](#)
 - [RCW 77.08.020: "Game fish" defined](#)
- Not non-native food fish
- Not aquatic invasive species





POLICY C-3632

Non-native Gamefish and Fisheries

Policy Elements

- Population Management
- Fishing Regulations
- Introduction/Translocation
- Habitat
- Illegal Introduction
- Control



Six Water Types

- Rivers, Streams, and Beaver Ponds
 - w/ native anadromous fish
 - w/ native species of concern
 - w/o native species of concern
- Lakes, Ponds, and Reservoirs
 - w/ native anadromous fish
 - w/ native species of concern
 - w/ limited or no connectivity, or no anadromy



Evaluation and Reporting

- Action(s) implemented under the guidance of this policy will be evaluated to determine the effectiveness in achieving desired goals.
- The WDFW will provide an annual summary to the Commission that describes action(s), their status, and their efficacy as implemented under the guidance of this policy.





Actions (2024)

Columbia River Dam Angling Program

- Angling program was expanded to include bass, walleye, and channel catfish to the NPM dam angling removal programs.
- These species often account for appx 30% of the total number of fish encountered by the anglers.
- SEPA completed January 26, 2023.
- 2024: 1,241 SMB and 168 WAL (3,413 NPM)



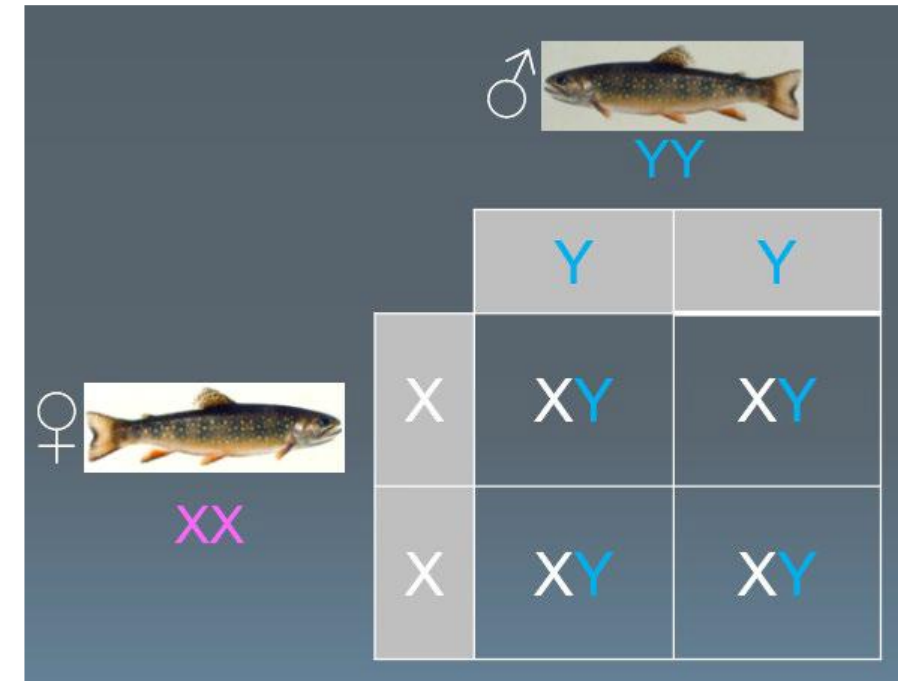
Interagency agreement (MOA)

- An MOA was developed for the targeted removal of NNGF.
- Currently; BOR, USFS, USFWS, mid-C FEG, for Eastern Brook Trout in the upper Yakima basin.



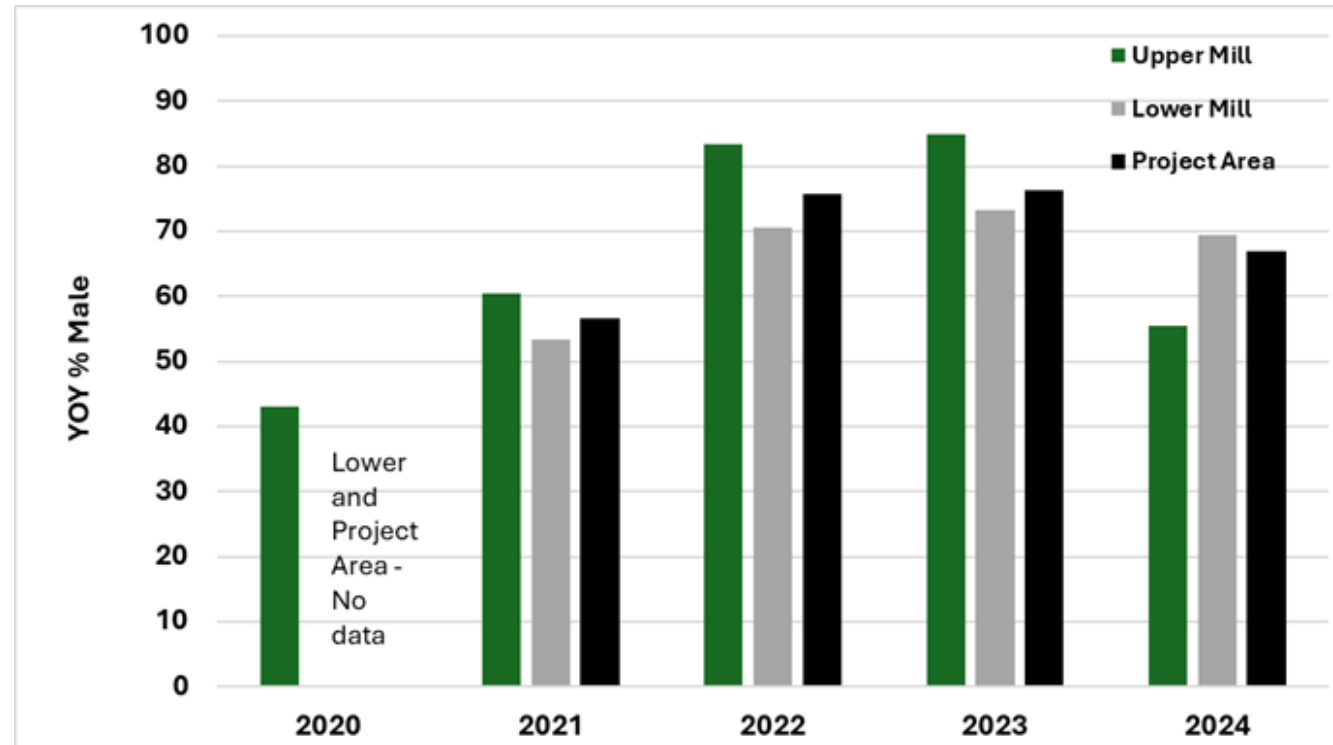
YY Brook Trout Project

- Sullivan and Mill creeks
 - Westslope Cutthroat and Bull Trout restoration efforts.
- Uses trojan Y chromosome (M_{yy}) to produce all male (EBT) offspring.
- Coupled with removal efforts shows promising results.



YY Brook Trout (cont.)

- Big jump in % male from 2021-2023
- Number of YOY decreased by 88%



Catfish Stocking

- 13,000 1-pound Channel Catfish were stocked.
- 12 lakes total (8 East: 6,200 fish) (4 West: 5,800 fish)



Rule Changes

- **Fish Lake, Chelan County**
 - In January of 2024 a petition was submitted requesting the daily harvest limit of Yellow Perch be changed to state-wide rules of no minimum size and no daily limit. Following an evaluation of the population and a proposal to The Commission the petition was granted.



Research

- Developing methods to more accurately assess the abundance of bass and walleye in large rivers like the Columbia River.
- Examining the seasonal diets of walleye in the lower Snake River.





Questions?