



State of Washington  
Department of Fish and Wildlife

48 Devonshire Road, Montesano, Washington 98563-9618 (360) 249-4628 FAX (360) 249-1229

May 23, 2025

## WASHINGTON COASTAL DUNGENESS CRAB INDUSTRY NOTICE

### TEMPORARY RESEARCH MOORINGS

40-50 Miles West of Grays Harbor

June 8 – October 1, 2025

Please be advised that the University of Washington, aboard the R/V Sally Ride, will be conducting oceanographic research operations from June 8 through July 6, 2025, with extended mooring deployments lasting until October 1, 2025. Operations will occur approximately 40 to 50 nautical miles offshore from Grays Harbor, WA. Maps detailing the location of moorings and research transects, as well as a table of mooring coordinates, are included at the end of this notice.

#### Research activities include:

- Deployment of **research moorings**, most with surface buoys, instrumentation, and hardware spanning the water column at depths ranging from 300 feet (50 fathoms) to over 3,000 feet (500 fathoms). Moorings will be deployed, dependent on location, from **June 10 to October 1, 2025**.
- Continuous **surveys** involving towed oceanographic instruments approximately 100 yards astern of the vessel at speeds of 3-5 knots. The R/V Sally Ride will be conducting surveys with towed oceanographic instruments from **June 8 to July 6, 2025**.

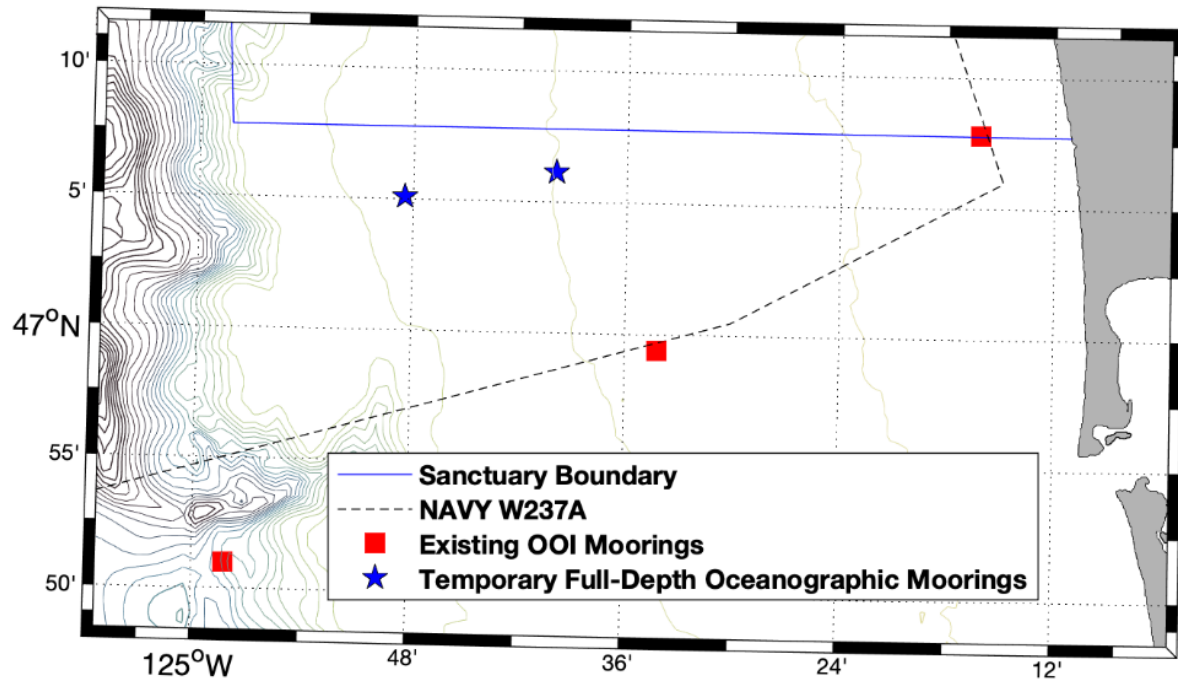
Moorings will be clearly marked and equipped with amber marker lights displaying the sequence: FL (5) Y 20s (five 1-second flashes every 20 seconds). Additionally, select moorings will feature larger surface floats and radar reflectors to enhance visibility.

#### Vessels are requested to:

- Maintain a minimum **distance of 200 yards from all mooring** locations to prevent entanglement or damage to vessels, fishing gear, and mooring equipment.
- Maintain a minimum **distance of 500 yards from the R/V Sally Ride during research operations**. Day shapes or lights will indicate when operations are underway, and the vessel is restricted in its ability to maneuver.
- Communicate with the R/V Sally Ride to avoid conflicts. The R/V Sally Ride (AGOR 28) can be reached using the radio call sign KAOU, cell 858-253-1347, or Fleet Broadband 011-870-773-153-565.

Your cooperation in avoiding these research areas and operations is appreciated and essential for the safety of all involved. If you have any questions pertaining to this notice, contact Matt George at [Matthew.George@dfw.wa.gov](mailto:Matthew.George@dfw.wa.gov) or 360-640-1066. For additional information or specific operational details, please contact John Mickett at [mickett@uw.edu](mailto:mickett@uw.edu) or 206-291-5606.

**Mooring Locations**  
**(June 10 to September 27, 2025)**



Mooring Name	Lat (D-M-S)	Lon (D-M-S)	Depth of mooring top (ft)
OM-C2	47-05-06.625N	124-48-28.8799W	surface
OM-N2	47-05-37.2900N	124-47-33.420W	surface
OM-S2	47-04-49.2900N	124-47-21.990W	surface
OM-E2	47-06-08.208N	124-39-57.600W	surface
OM-W2	47-04-36.006N	124-54-56.844W	surface
Rx1k	47-04-22.602N	124-54-30.234W	surface
Rx5k	47-04-45.408N	124-51-20.022W	surface
Rx10k	47-05-13.590N	124-47-29.814W	surface
Rx20k	47-06-10.266N	124-39-37.314W	surface
Rx6k_N	47-07-30.024N	124-56-5.106W	surface
ARMS	47-04-17.538N	124-55-16.740W	surface
IVAR Deploy 1	47-04-58.800N	124-49-30.000W	418
IVAR Deploy2	47-05-46.200N	124-42-54.000W	316
IVAR Deep	46-43-12.000N	124-13-12.000W	3296
YT EK80	47-05-41.750N	124-43-35.610W	345

**Research Survey Transect Locations**  
**(June 8 to July 6, 2025)**

