

INVASIVE QUAGGA AND ZEBRA MUSSELS



Washington
Department of
**FISH &
WILDLIFE**

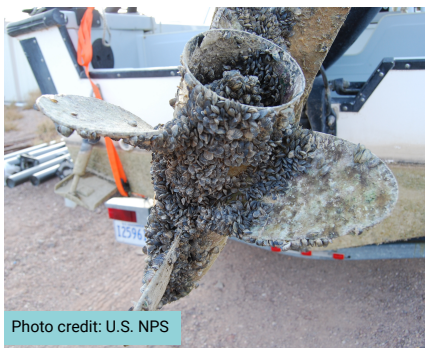


Photo credit: U.S. NPS



THREATEN WASHINGTON'S:

ENVIRONMENT



AQUATIC HABITAT



NATIVE SPECIES



WATER QUALITY AND
POLLUTION

ECONOMY



RECREATION



FOOD SECURITY



HYDROPOWER AND
WATER SYSTEMS

AN IMMINENT THREAT

Quagga and zebra mussels can attach to solid surfaces, clogging water intake pipes and destroying aquatic habitat for native species.

If established in Washington, management and mitigation costs will exceed **\$100 million each year**.

PROTECT OUR WATERS

Preventing invasive mussels from entering our waters is critical.

If you work or recreate on the water, turn this card over to learn more about how you can help prevent the spread of aquatic invasive species.



SCAN HERE FOR
MORE INFORMATION
ON QUAGGA AND
ZEBRA MUSSELS

*Unless otherwise indicated, photos by WDFW

QUAGGA MUSSELS

Tan to almost white with narrow stripes. Fan-shaped and rounded.



Photo credit: Amy Benson, USGS

ZEBRA MUSSELS

White to cream with jagged brown or black stripes. D-shaped.



Photo credit: Amy Benson, USGS

PROTECTING OUR WATERS

WATERBODY MONITORING

WDFW monitors water bodies throughout the state for aquatic invasive species and is prepared to act should quagga or zebra mussels be detected.

DON'T LET IT LOOSE

Imported aquatic plants like moss balls can be infested with aquatic invasive species and enter our waterways through improper disposal. Always follow proper disposal guidelines.



Benthic sampling with ponar grab sampler.



Zebra mussel on a Marimo moss ball.



Quagga and zebra mussel detection canine, Fin.

WATERCRAFT INSPECTION

Quagga and zebra mussels, like all aquatic invasive species, can hitch a ride on watercraft, helping them spread to new water bodies.

When transporting watercraft, stop at mandatory watercraft inspection stations on your route - it's the law. RCW 77.135.130

FIND SOMETHING SUSPICIOUS?

Decontaminating watercraft removes invasive mussels and other aquatic invasive species.

To learn more about decontaminating your watercraft and equipment, scan the QR code to the right.



HOW YOU CAN HELP

CLEAN, DRAIN, DRY

If gear or equipment has been used or stored in the water, clean, drain, and dry it after every use to prevent the spread of invasive mussels. You can find more information on our website by scanning the QR above.

REPORT SUSPICIOUS MUSSELS

Report possible invasive mussels at invasivespecies.wa.gov/report-a-sighting.

Make sure you take a photo!



As a prohibited species, it is illegal to transport, purchase, or sell live quagga and zebra mussels in Washington.

Request this information in an alternative format or language at wdfw.wa.gov/accessibility/requests-accommodation, 833-885-1012, TTY (711), or CivilRightsTeam@dfw.wa.gov.