

Columbia Basin Wildlife Area

Advisory Committee Meeting

May 1, 2019

WDFW Region 2 Office – Ephrata

Meeting Notes

Attendees:

ADVISORY MEMBERS: Matt Perkins, Robert Sloma, Dick Price, Bill Warner, Lisa Wilson, Clyde Lay, Julie McPherson, Larry Frazier, Pascal Bolduc

WDFW: Rich Finger, Chad Eidson, Cynthia Wilkerson, Patricia Jatczak, Chris Busching, Josh Harmon, Sean Dougherty

Introduction

Rich kicked off the meeting and welcomed everyone, and everyone introduced themselves. The purposes of this first meeting of the Advisory Committee was to: 1) get to know each other, 2) introduce the roles and responsibility of being on the committee, 3) get an introduction to the planning process for the wildlife area; 4) learn more about the wildlife area; and, 5) discuss some key issues and priorities for the wildlife area.

Advisory Committee

Patricia talked about the purpose of the committee, which is to advise WDFW on management of the wildlife area, and to participate and advise WDFW on the wildlife area 10-year management plan.

A standard draft charter was distributed. Patricia asked the members to think about some questions in the charter, and to send them to her via email. Once she gets comments, the charter will be adjusted, and the committee can agree to it (or send it back for more work!)

The Advisory Committee meets 2-3 times around the management plan development, and other times as the group decides. Rich suggested meeting in July or August to tackle one of the major recreational areas on the wildlife area, Quincy Lakes.

Wildlife Area Planning Process

Patricia described what it takes to get the management plan written. It includes about one and half to two years of work, mainly by the WDFW regional planning team, but also with significant input from the Advisory Committee and the public. At this point, we expect the goals and objectives (the action items) and rough draft of the full plan to be ready in October.

Wildlife Area Description

Chad introduced the committee to the Columbia Basin Wildlife Area, with a set of slides for each of the 13 units. The 192,000 that are managed by WDFW under the wildlife area has multiple owners, including WDFW, Bureau of Land Reclamation, the Department of Natural Resources, and US Fish and Wildlife Service.

Rich talked about some of the management successes that have occurred on the wildlife area in recently, including boat launch improvement, wetland enhancements, and the partnership with rock climbing groups to put in some toilets at Frenchman's Coulee, a popular climbing area on the Quincy Lakes Unit.

Discussion

Some topics that were discussed include potential prime habitat for sale in the Quincy Lakes area and water management issues at the Gloyd Seeps area. Staff previously identified six major categories of things that should be targeted in the wildlife area plan: Recreation, litter and vandalism, management under mixed ownership, wetlands management, fire and fire management, and, of course, funding.

Recreation. Quincy Lake recreation was discussed. There is a lot of recreation, which is growing exponentially. Rich suggested a separate Advisory meeting that also include other recreationist (hiker, climbers, etc.) to discuss management considerations and options. User groups have been good partners and have provided facilities, and also get information out to their groups from WDFW.

Mixed Ownership. Much of the land is owned by BOR, whose basic mission is to deliver water. Although recreation is not a goal, they now have a recreation planner and a "minimum basic" level of recreation they provide. Julie from BOR is working on building partnership and can also assist with recreation grant applications.

Fire management. WDFW fire management funds cannot currently be used for post-fire restoration work, only suppression. The agency will continue to try and secure restoration funds.

Litter and vandalism. This is one of the biggest problems on the wildlife area, and takes a lot of the managers' time and funds to deal with. Garbage dumping, target shooting (and subsequent littering) are big problems. WDFW officers will try to fine people that they discover are dumping and vandalizing, but it is hard to catch people.

Wrap-up

Rich will put together a distribution list of Advisory members so we can get notes and other information out to you.

The notes will be posted on the Advisory Committee webpage as well.

Advisory members will send suggestions and edits on the Charter to Patricia.

A meeting to discuss recreation will be planned in the summer. The next meeting to discuss the goal and objectives of the plan will be around October.

A meeting for the general public is May 2 at 6:30 at the Best Western in Moses Lake.

Thank you for your interest and participation!

Columbia Basin Wildlife Area

Wildlife Area Advisory Committee Meeting

May 1, 2019



Agenda

- ❖ Introductions & Background
- ❖ Agency Mission & Goals
- ❖ Advisory Committee Roles
- ❖ Wildlife Area Planning Process
- ❖ Columbia Basin Wildlife Area Overview
- ❖ Key Issues & Plan Priorities
- ❖ Discussion & Comments



WDFW Mission

*Preserve, protect and perpetuate
fish, wildlife and ecosystems
while providing sustainable fish and wildlife
recreational and commercial opportunities.*



Wildlife Area Advisory Committee

The purpose of Advisory Committees is to

- ▶ *provide input through the development of each wildlife area plan*
- ▶ *provide input about ongoing lands management activities*
- ▶ *Bring in the perspectives of members of their organization*



Wildlife Area Advisory Committee

Charter

Responsibilities

Ground rules

Wildlife Area Advisory Committee

Meetings

During the Planning Process

1. Introduction, charter, review issues **May 2019**
2. Review goals & objectives **Oct 2019**
3. Review draft plan **Feb 2020**

**After plan, twice per year
as needed**



Purposes of the Plan

- ✓ Sets the 10 year vision
- ✓ Guides activities on the WLA
- ✓ Ensures lands are managed consistent with mission and funding obligations
- ✓ Identifies priority actions and plans
- ✓ Integrates Agency priorities
- ✓ Facilitate interagency and intergovernmental coordination
- ✓ Provides opportunities for engagement

WLA Planning Process

Three Phases

I: SCOPING

- *Internal, Advisory, Public*

II: Goals & Objectives Development

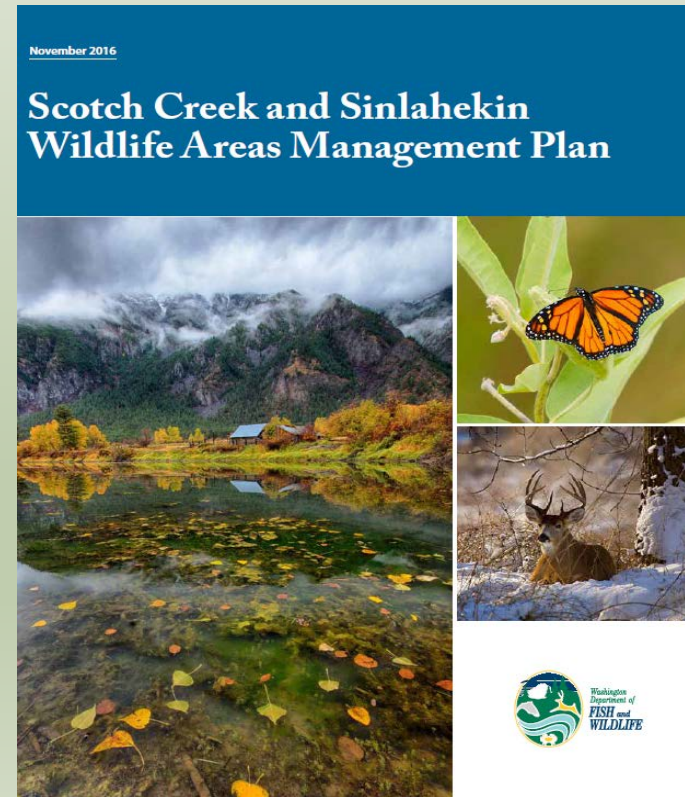
- *Internal, Advisory*

III: Plan Development

- *Internal, Advisory, Public*

Plan Components

- ❖ Wildlife area general information
- ❖ Unit descriptions & maps
- ❖ Recreation
- ❖ Wildlife area management
- ❖ Action items
- ❖ Species information
- ❖ Habitat information
- ❖ Fire response
- ❖ Appendices



Public Outreach Strategy

- ✓ Interested parties list
- ✓ Fact sheet, announcements
- ✓ Web site, email for comments
- ✓ Wildlife Area Advisory Committee meetings
- ✓ Public meetings
- ✓ Tribal meetings
- ✓ SEPA process



About the Wildlife Area



Key Issues

- ✓ Recreation management
- ✓ Mixed ownership
- ✓ Fire and fire management
- ✓ Funding
- ✓ Wetlands management
- ✓ Litter and vandalism

Next Steps

MEMBERS

- ❖ Comment on Charter
- ❖ Review wildlife area information
- ❖ Discuss with groups/constituents /
Share information
- ❖ Review G & O (*later*)

WDFW

- ❖ Public Scoping Meeting
- ❖ Finalize Charter
- ❖ Internal team works info gathering
and Goals & Objectives

Contacts & Info

Chad Eidson, *Wildlife Area Manager*

colbawa@dfw.wa.gov 509-765-6641

Patricia Jatczak, *Wildlife Area Planner*

Patricia.Jatczak@dfw.wa.gov 360-902-2815

Columbia Basin Wildlife Area:

<https://wdfw.wa.gov/places-to-go/wildlife-areas/columbia-basin-wildlife-area>

2006 Columbian Basin Wildlife Area Plan:

<https://wdfw.wa.gov/publications/00461>

Columbia Basin Wildlife Area Advisory Committee:

<https://wdfw.wa.gov/about/advisory/cb-waac>

WDFW Advisory Group Handbook:

https://wdfw.wa.gov/sites/default/files/about/advisory/WDFW_advisory_group_handbook.pdf

Columbia Basin Wildlife Area Planning

Chad Eidson
Wildlife Area Manager



Columbia Basin Wildlife Area

192,000 acres (300 square miles)

Mixed ownership

U.S. Bureau of Reclamation

U.S. Bureau of Land Management

U.S. Fish and Wildlife Service

Washington State Department of Natural Resources

Grant County Public Utility District

13 Units



Banks Lake Unit

44,741 acres

Ownership

USBOR - 44,000 acres

WDFW – 741 acres

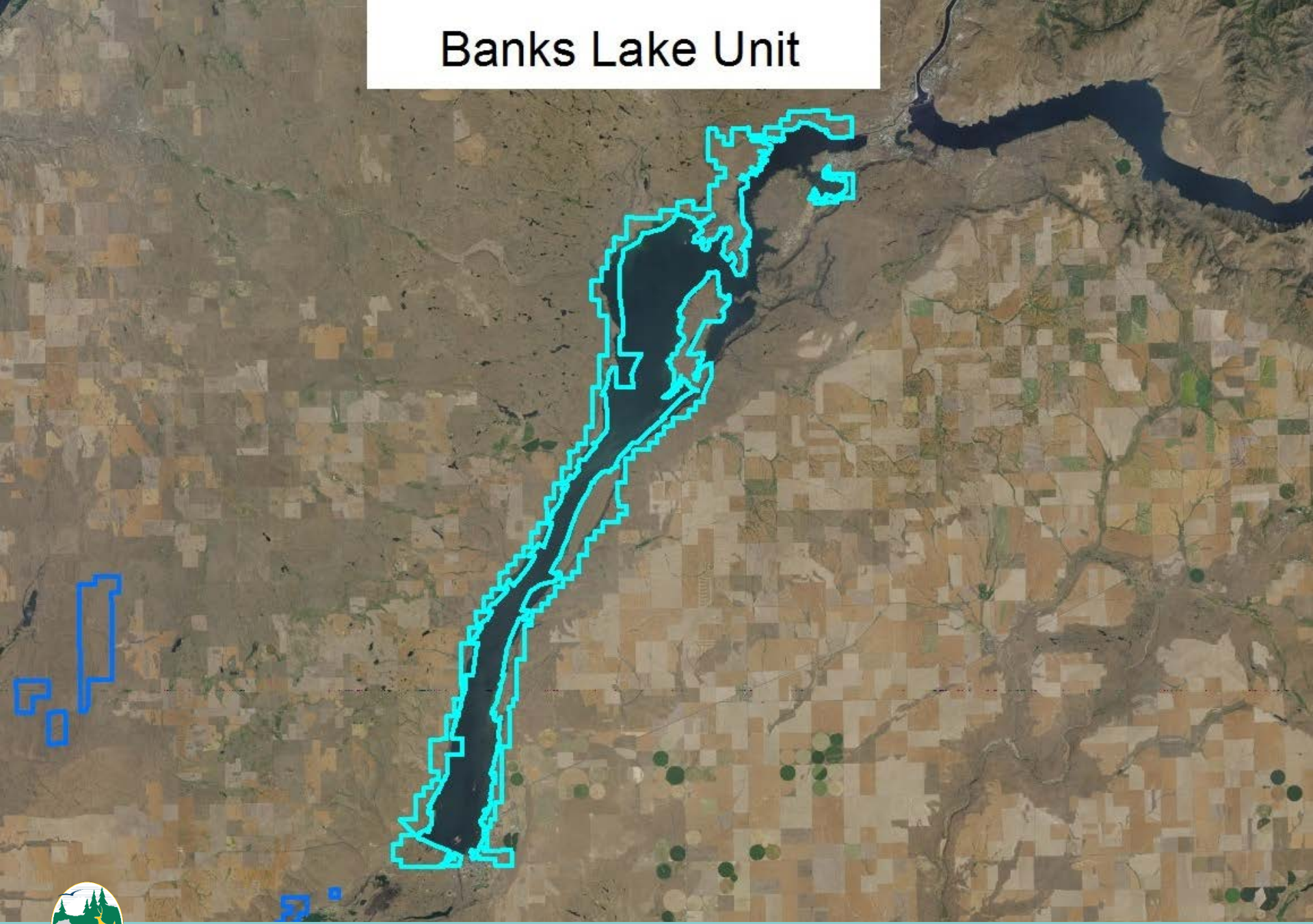
1 Waterfowl Reserve

Popular Recreation

Fishing, Boating, Camping



Banks Lake Unit



Sun Lakes Unit

9,140 Acres

Ownership

BOR – 240 acres

WDFW – 200 acres

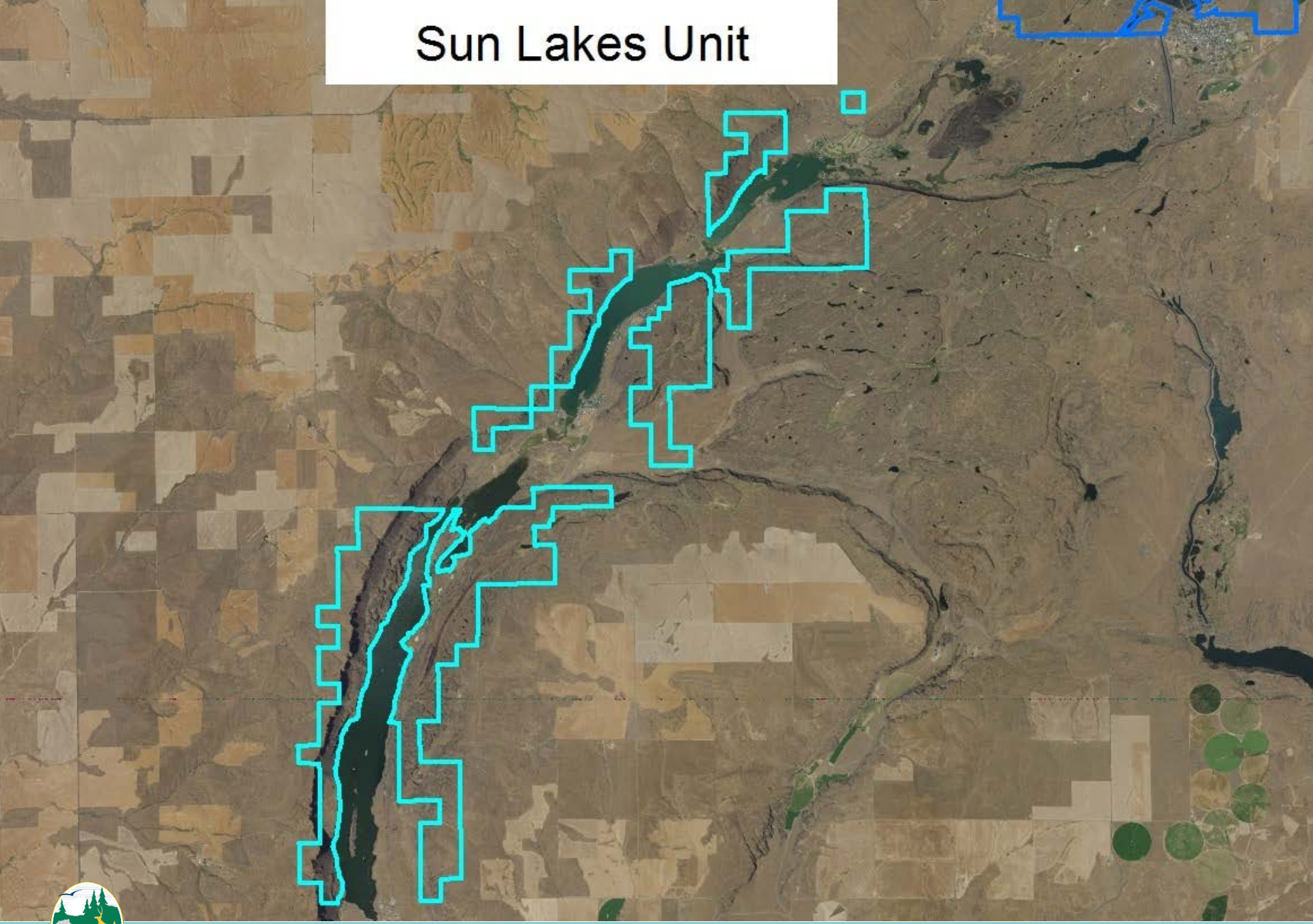
USFWS - 8,700 acres

Popular Recreation

Fishing, Boating, Hunting



Sun Lakes Unit



Gloyd Seeps Unit

10,982 Acres

Ownership

BOR - 3,342 acres

WDFW - 7,320 acres

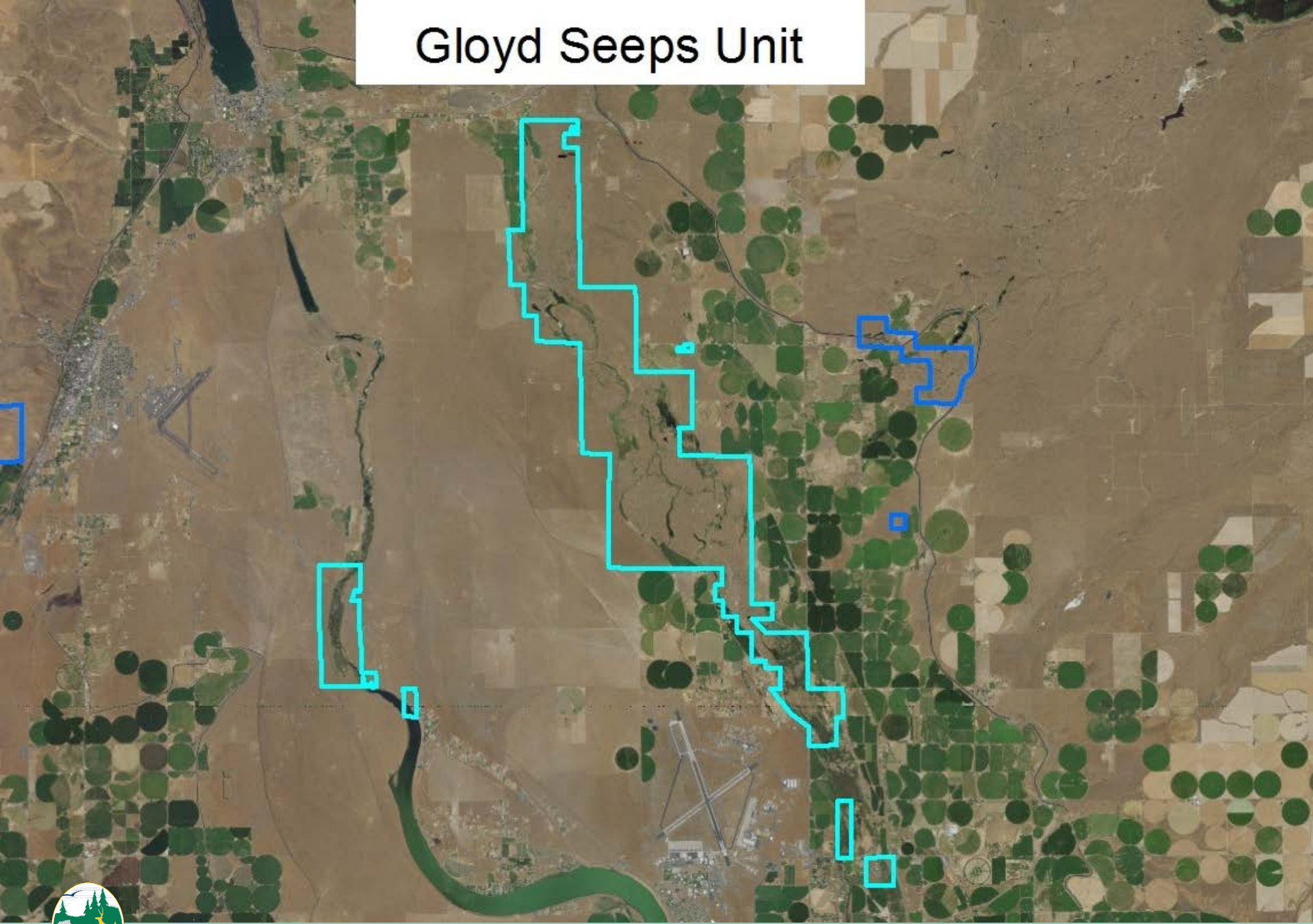
DNR – 320 acres

Popular Recreation

Hunting



Gloyd Seeps Unit



Quincy Lakes

15,226 Acres

Ownership

BOR - 6,017 acres

WDFW - 7,636 acres

DNR - 720 acres

BLM - 853 acres

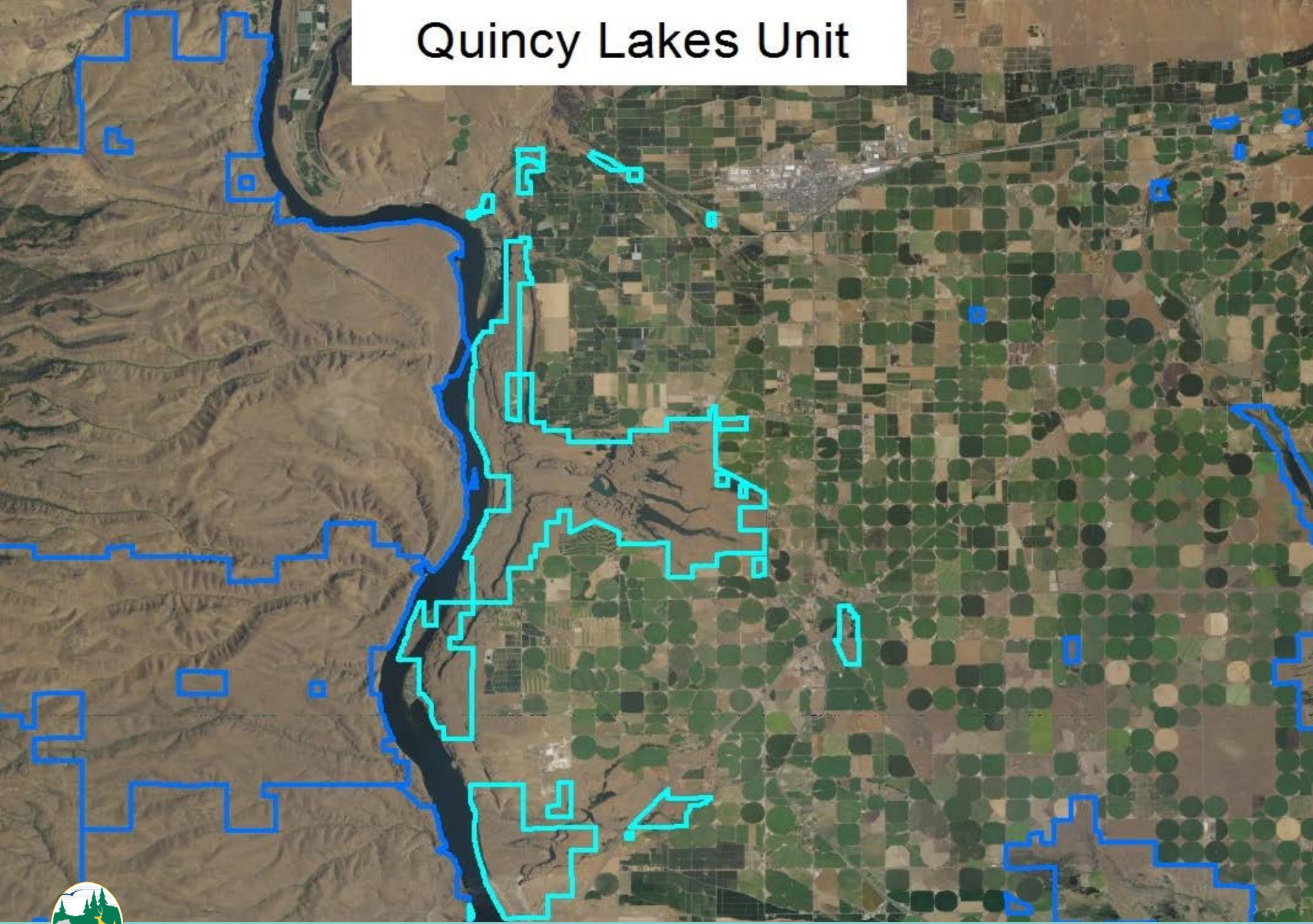
1 waterfowl closure area

Popular Recreation

Fishing, Hiking, Camping, Mountain Biking,
Climbing, Horseback Riding, Hunting



Quincy Lakes Unit



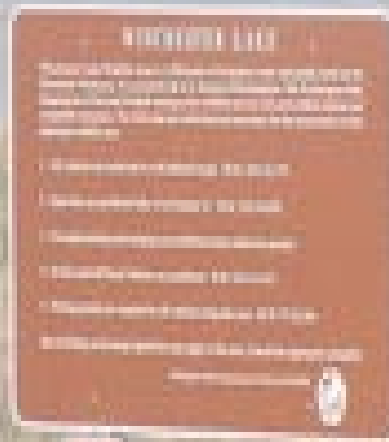


Winchester Lake Unit

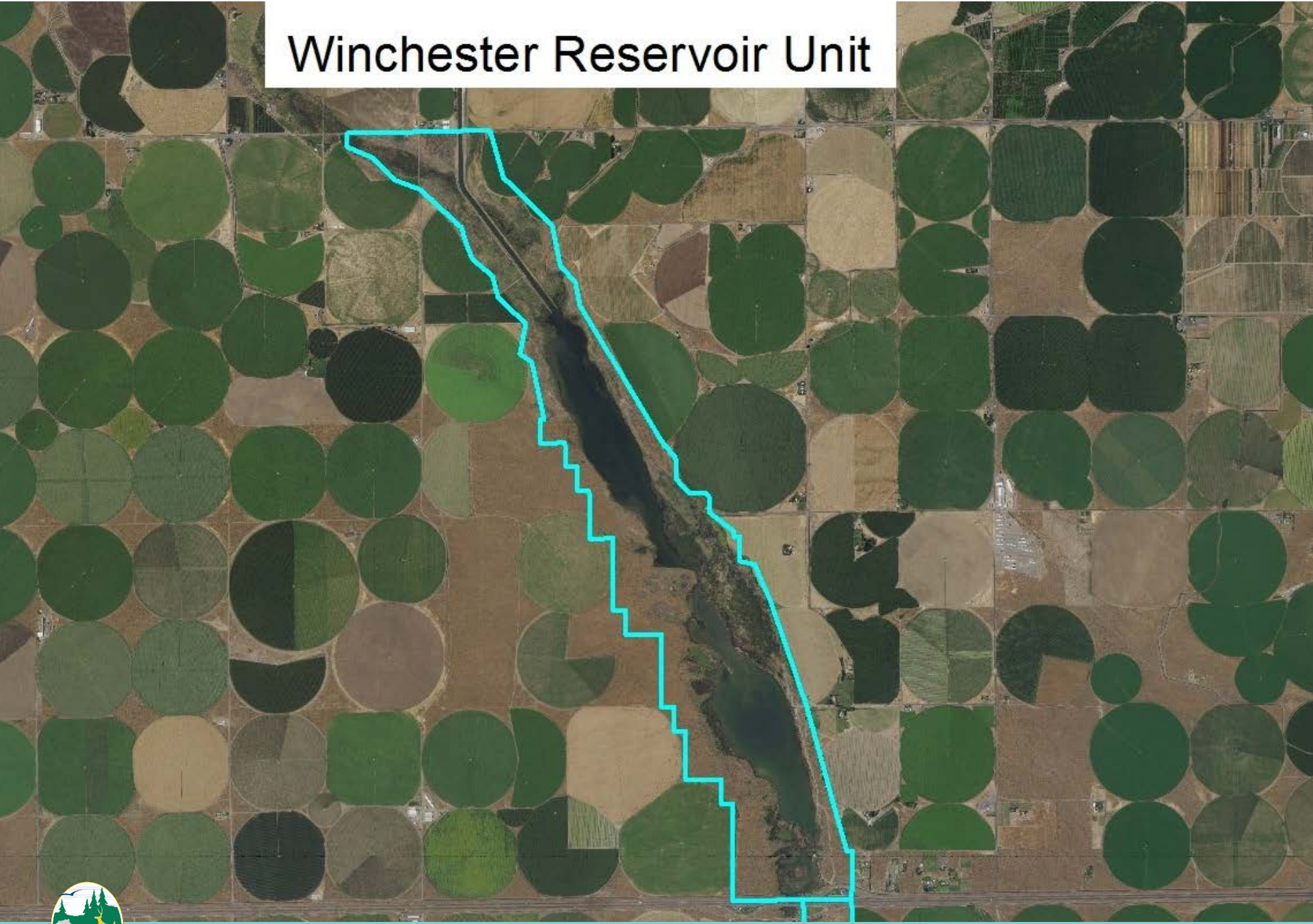
1,950 acres – All BOR

Popular Recreation

Hunting, Fishing



Winchester Reservoir Unit



The Desert Unit

34,920 acres

Ownership

BOR - 27,245 acres

WDFW - 7,675 acres

2 reserves (Frenchman and Winchester)

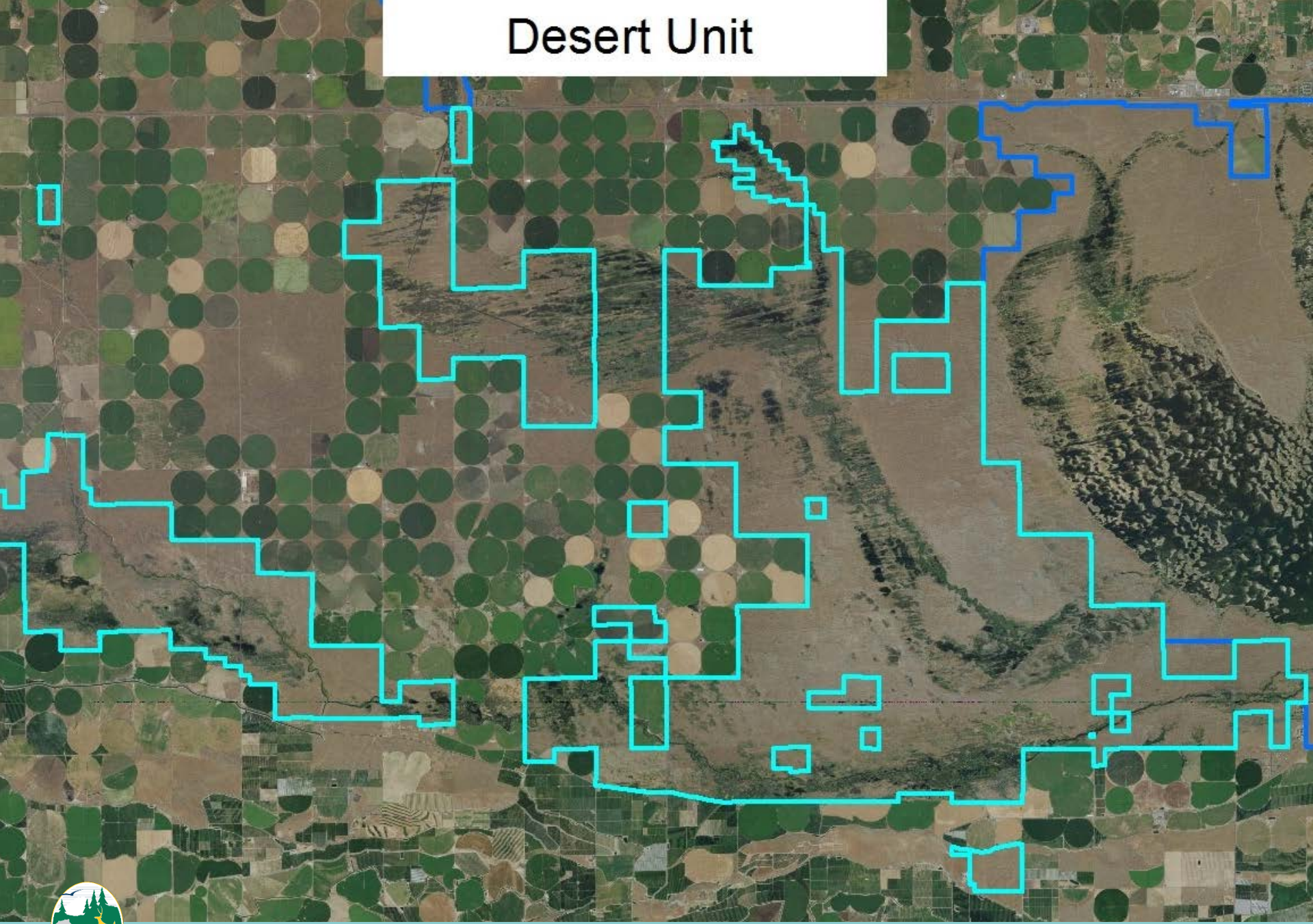
2 regulated access areas

Popular Recreation

Hunting, Fishing, Hiking, Shed Hunting, Horseback riding



Desert Unit



Potholes Reservoir

32,820 acres

Ownership

BOR - 32,500 acres

DNR - 320 acres

1 reserve

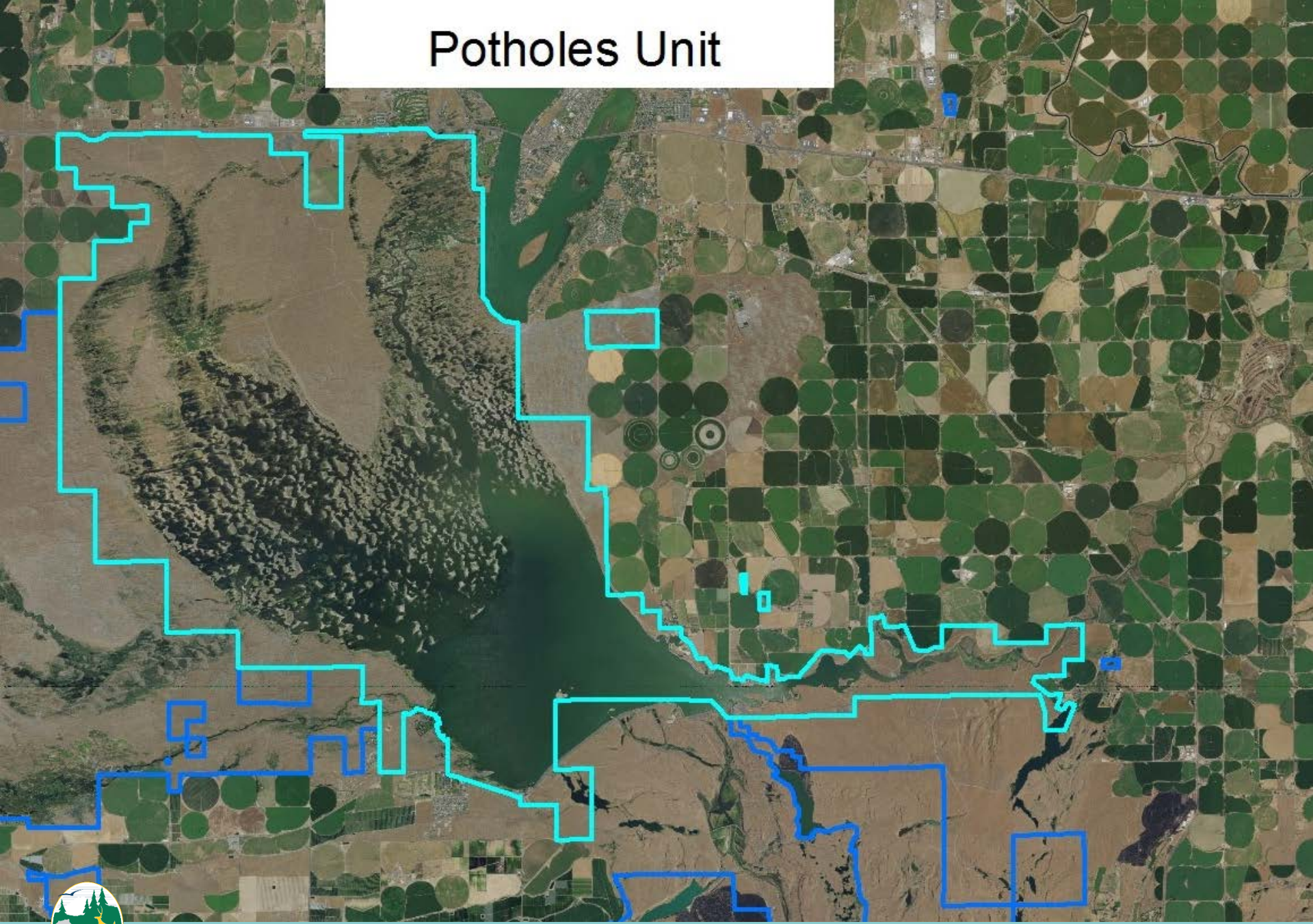
1 regulated access area

Popular Recreation

Fishing, Hunting, Camping, Boating, Bird Watching



Potholes Unit



Seep Lakes

4,877 acres

Ownership

BOR - 4,537 acres

DNR - 340 acres

Mixed with private land.

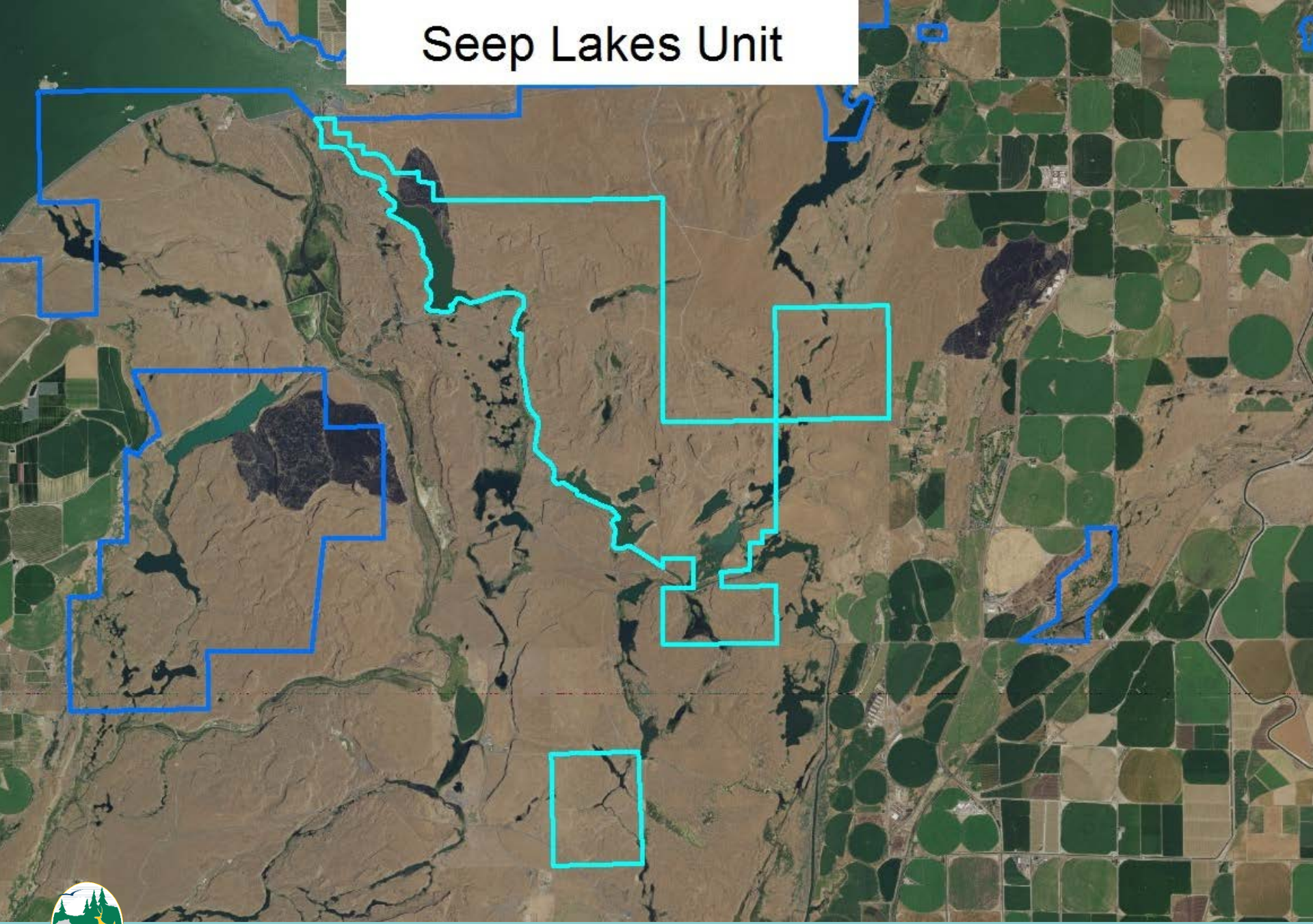
Fishing access agreements for private lakes.

Popular Recreation

Fishing, Hunting, Camping, Boating/swimming



Seep Lakes Unit



Goose Lakes

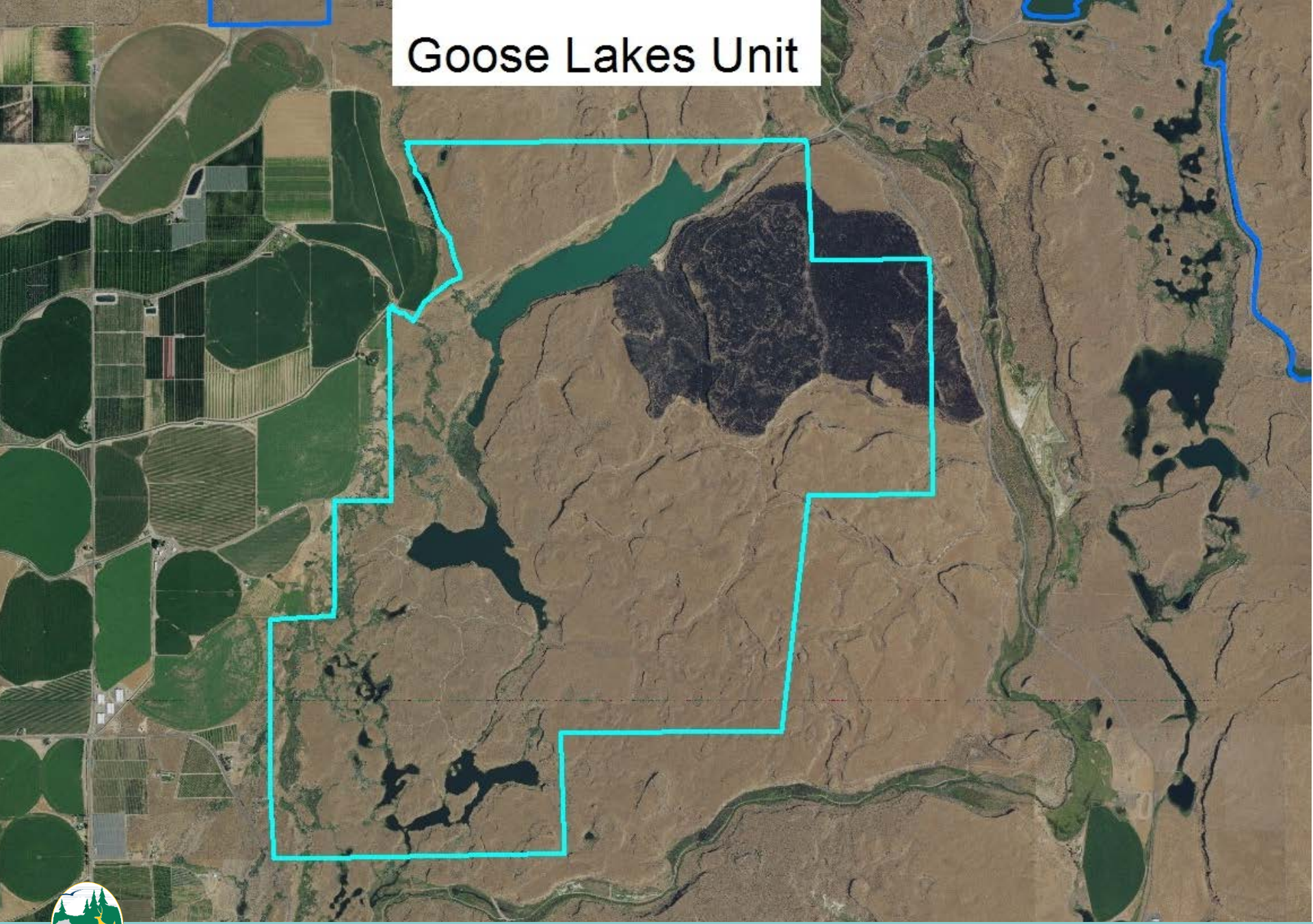
3,546 acres – All BOR

Popular Recreation

Fishing, Boating/swimming, Hunting



Goose Lakes Unit



Lower Crab Creek Unit

24,958 acres

Ownership

BOR - 7,215 acres

WDFW - 12,048 acres

DNR – 815 acres

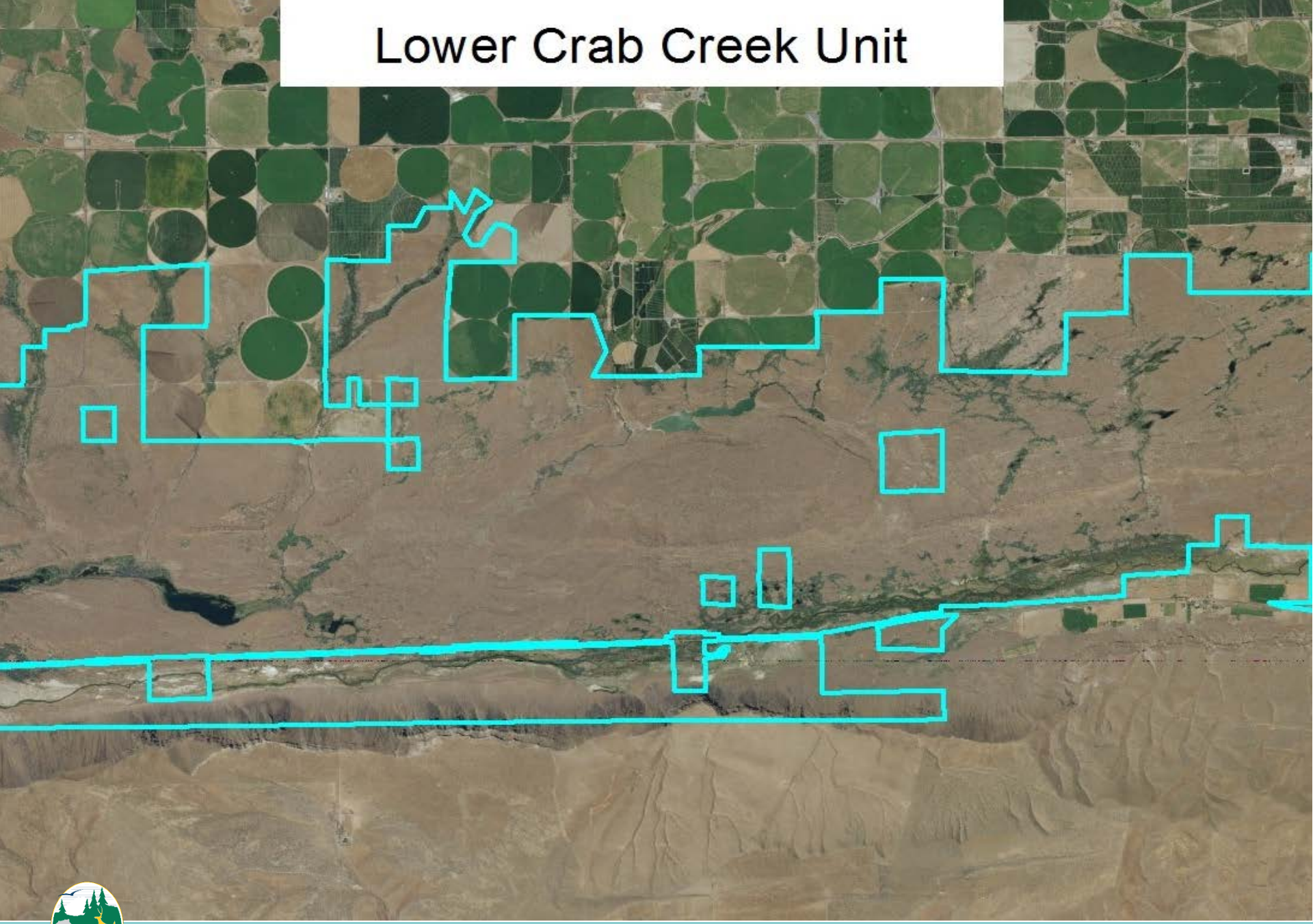
USFWS - 4,880 acres

Popular Recreation

Hunting, Fishing, Hiking, Bird Watching



Lower Crab Creek Unit



Priest Rapids

3,202 Acres

Ownership

BOR – 915 acres

WDFW - 2,247 acres

BLM - 40 acres

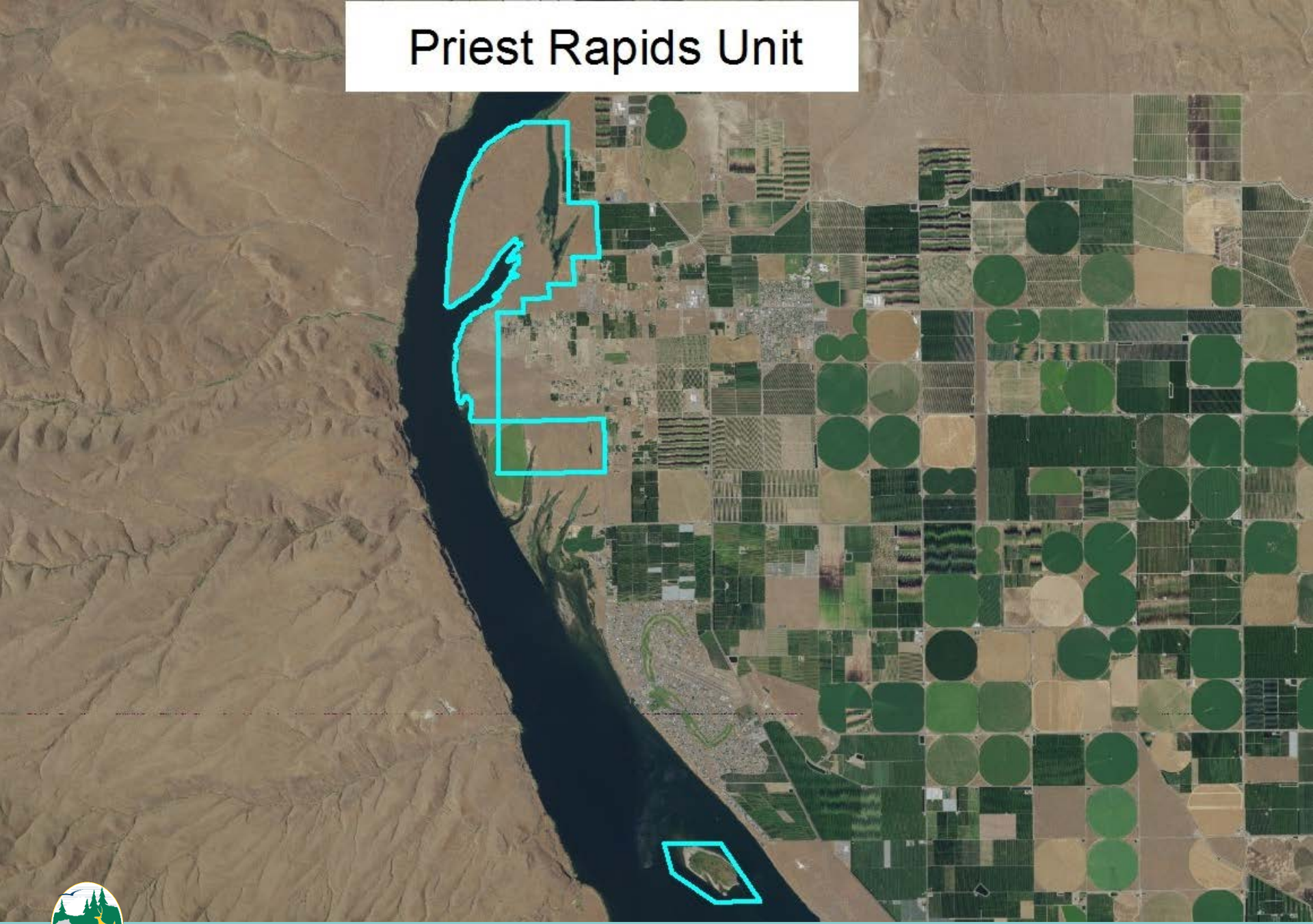
Grant - PUD acres

Popular Recreation

Fishing, Boating, Hunting



Priest Rapids Unit





Billy Clapp Unit

4,000 Acres

Ownership

BOR - 3,710 acres

WDFW – 290 acres

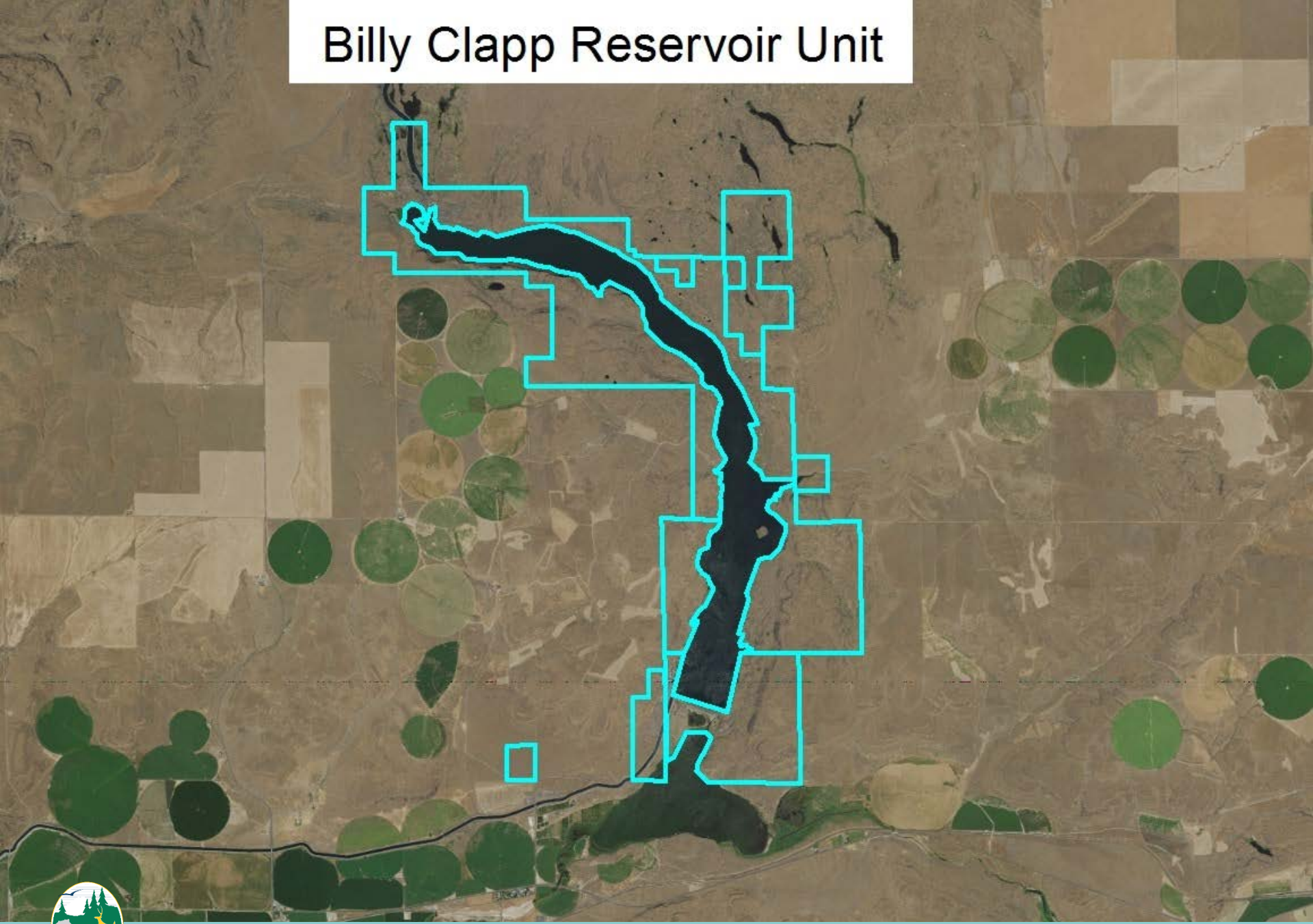
1 game reserve

Popular Recreation

Fishing, Boating/swimming



Billy Clapp Reservoir Unit

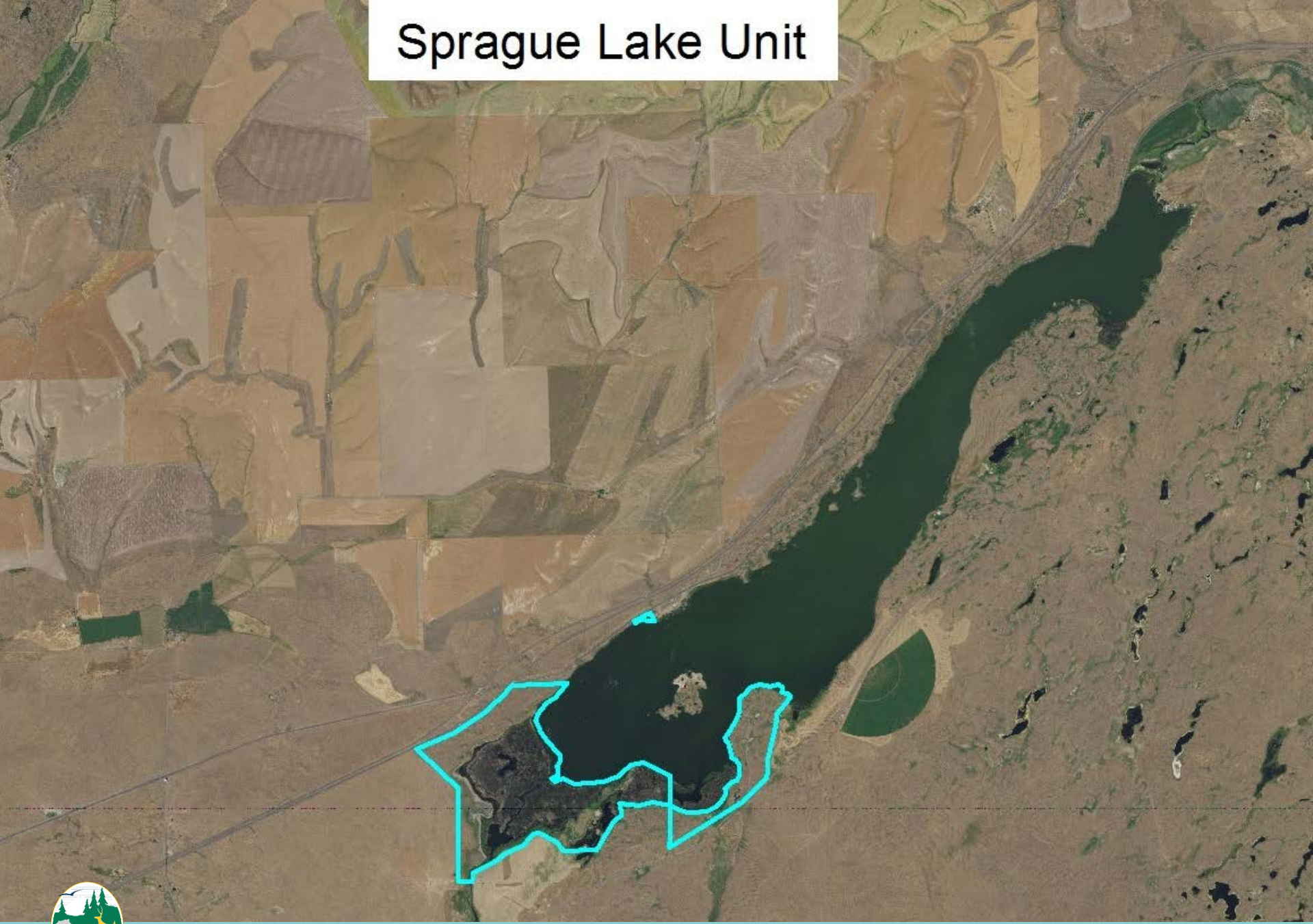


Sprague Lake Unit

675 acres – All WDFW
Popular Recreation
Fishing, Boating



Sprague Lake Unit



Columbia Basin Wildlife Area Success Stories

Rich Finger
Region 2 South, Lands Operations Manager





Success Stories

Success usually comes to those who are too busy to be looking for it. - Henry David Thoreau

List of Success Stories

- Boat Launch Improvements
- Frenchman Climbing Area
- Winchester Wetland Excavations
- Frenchman Regulated Access Area expansion
- Ditch maintenance partnership with QID/BOR/WDFW
- Post-fire habitat restoration
- Dense Nesting Cover project
- Wildfire Response Coordination
- Electric City Annex – Hunting Agreement



Boat Launch Improvements

- Winchester Wasteway & Dodson Road
- Blue Lake Loading Ramp and Plank Replacement
- Lind Coulee Redevelopment and Plank Replacement
- Glenn Williams Redevelopment
- Burke Lake Redevelopment



Frenchman Climbing Area

- Two vault toilets installed (2012-2018).
- Major contributors include:
 - Washington Climbers Coalition
 - The Access Fund
 - The American Alpine Club
 - The Mountaineers
- 17 other contributors.
- Assistance for toilet pumping also received from climbing groups.



Winchester Wetland Excavations

- Excavated 60 acres of new wetlands in 2018.
- An additional 31 acres planned for 2019.
- Constructed a series of swales with armored access to maintain water delivery to Winchester RAA.

Date & Time: Tue, Jun 10, 2015, 11:50:19 PST
Position: -047.065999° / -119.540728°
Altitude: 1144ft
Datum: WGS-84
Azimuth/Heading: 093° NSM: 0.676m/s (1mph)
Elevation Angle: -05.2°
Horizon Angle: +03.5°
Zoom: 1X



Frenchman RAA Expansion

- Completed in 2017.
- Added ~30 acres of ponds.
- Contoured one pond to enhance ADA accessibility.
- Created four islands and enhanced one island.



Ditch Maintenance Partnership

- Coordinated effort between WDFW, Quincy Irrigation District, and Bureau of Reclamation.
- WDFW completed environmental compliance.
- Bureau of Reclamation provided annual funding.
- Quincy Irrigation District provides operator and equipment.
- Specific to Quincy area infrastructure.

