

PS Rec Advisor Meeting

July 27, 2021



Meeting Agenda

- Recreational Fishing Updates
 - MA-6 Updates
 - MA-9 Updates
 - Other MA updates
 - Tulalip Bubble
- Additional Questions / Concerns



MA-6

* For 7/1/21 – 7/25/21

Marine Area	Retained / Legal Chinook Encounters		Sublegal Encounters		Unmarked Encounters	
6	Encounter Estimate	4,768	Estimate	3,468	Estimate	2,031
	Encounter Limit	6,843	Encounter Limit	3,573	Encounter Limit	2,158
	Percent of Quota	70%	Percent of Quota	97%	Percent of Quota	94%

- Given events in MA-5 and MA-7, we are closely monitoring this fishery
- Increased effort with closures in 5 and 7



MA-9

* For 7/16/21 – 7/25/21

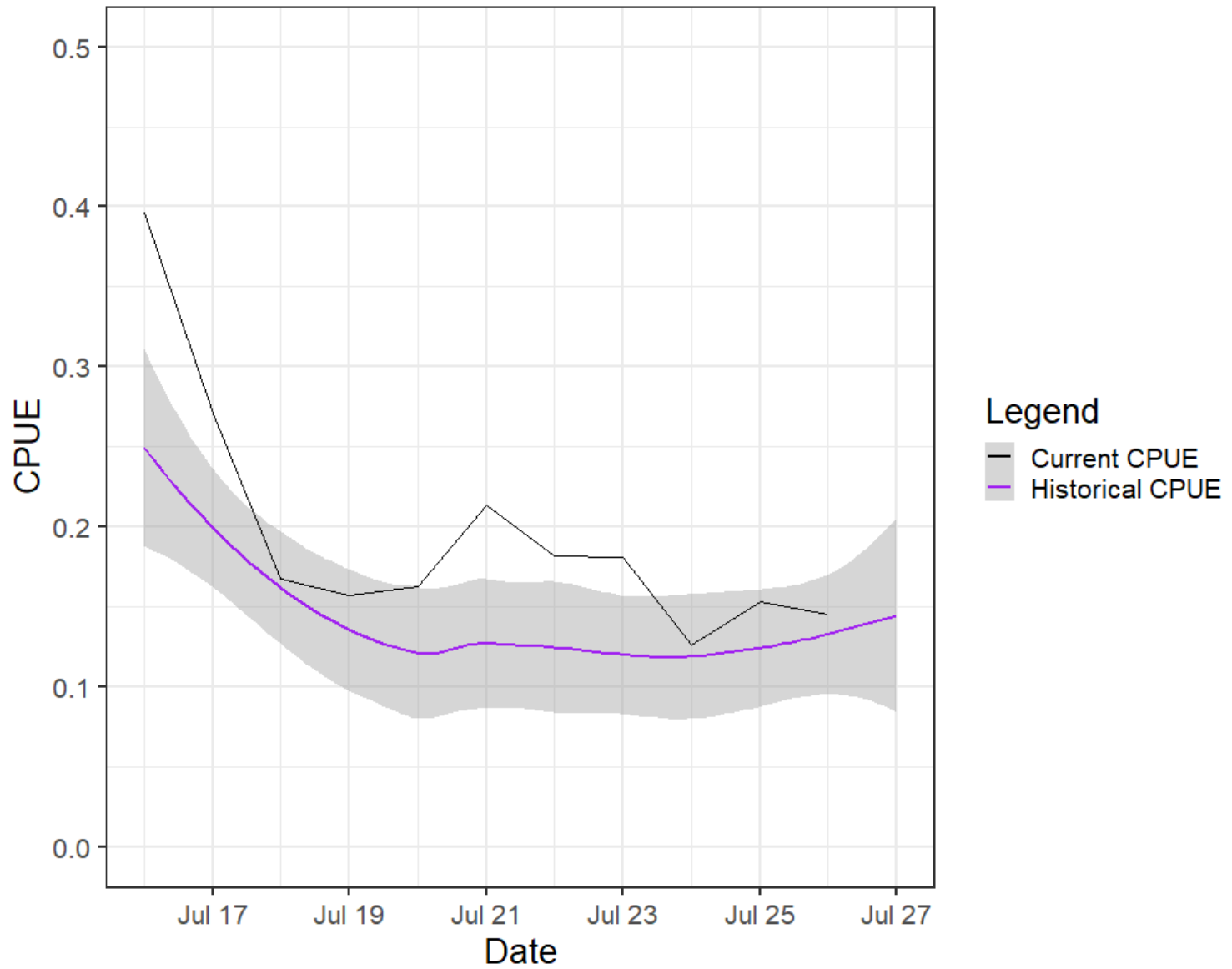
Marine Area	Retained / Legal Chinook Harvest		Sublegal Encounters		Unmarked Encounters	
9	Harvest Estimate	2,852	Estimate	3,675	Estimate	2,062
	Harvest Quota	4,700	Encounter Limit	7,317	Encounter Limit	2,110
	Percent of Quota	61%	Percent of Quota	50%	Percent of Quota	98%

- MA-9 started off hot and dropped off after opening weekend.
- Currently at 61% of quota, so we will continue to closely monitor through the week



MA-9

Area 09 CPUE Comparison



MA-5

* For 7/1/21 – 7/18/21

Marine Area	Retained / Legal Chinook Encounters		Sublegal Encounters		Unmarked Encounters	
5	Encounter Estimate	6,937	Estimate	6,830	Estimate	5,886
	Encounter Limit	7,565	Encounter Limit	17,041	Encounter Limit	11,401
	Percent of Quota	92%	Percent of Quota	40%	Percent of Quota	52%

- Remains Non-Retention for Chinook
- High percentage of encounters observed in first 2 weeks of season in MA-5
- Goal was to preserve the Coho and Pink fishery for the remainder of the summer



MA-7

* For 7/1/21 – 7/7/21

Marine Area	Retained / Legal Chinook Harvest		Sublegal Encounters		Unmarked Encounters	
7	Harvest Estimate	2,550	Estimate	983	Estimate	1,274
	Harvest Quota	1,382	Encounter Limit	1,899	Encounter Limit	2,466
	Percent of Quota	185%	Percent of Quota	52%	Percent of Quota	52%

- MA-7 remains closed while we determine if there are impacts available for Coho / Pink fishery later in the season.



MA-10

* For 7/16/21 – 7/22/21

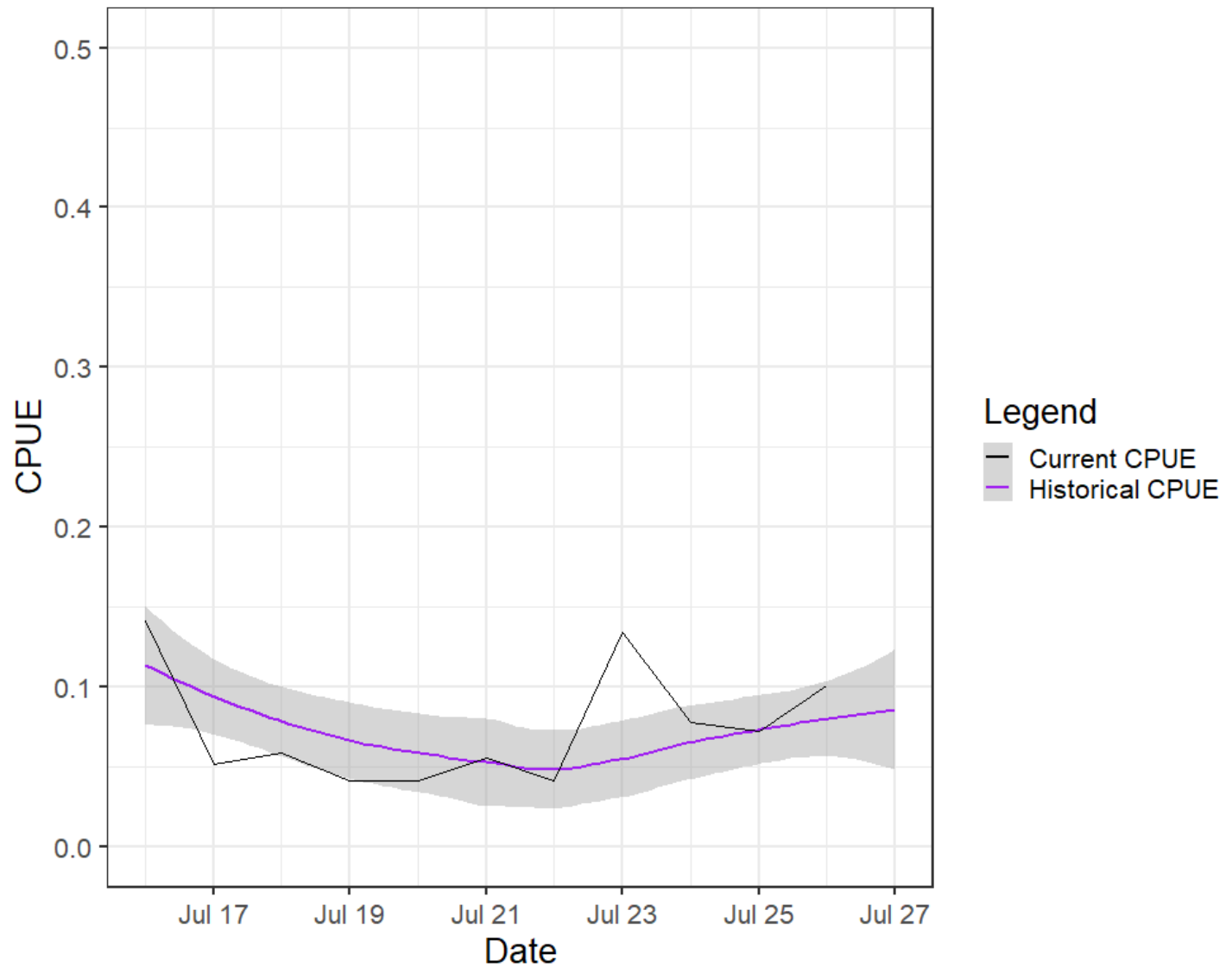
Marine Area	Retained / Legal Chinook Harvest		Sublegal Encounters		Unmarked Encounters	
10	Harvest Estimate	250	Estimate	885	Estimate	466
	Harvest Quota	3,718	Encounter Limit	6,592	Encounter Limit	2,586
	Percent of Quota	7%	Percent of Quota	13%	Percent of Quota	18%

- Lower CPUE than MA-9
- Currently only used 7% of available harvest quota



MA-10

Area 10 CPUE Comparison



MA-11

* For 6/16/21 –7/18/21

Marine Area	Retained / Legal Chinook Harvest		Sublegal Encounters		Unmarked Encounters	
11	Harvest Estimate	949	Estimate	1336	Estimate	819
	Harvest Quota	3,084	Encounter Limit	4,233	Encounter Limit	1,586
	Percent of Quota	31%	Percent of Quota	32%	Percent of Quota	52%

- CPUE has been relatively steady since the opening weekend.



Tulalip Bubble

- Remains closed
 - Tulalip Bubble terminal fishery
 - Freshwater Chinook directed fisheries in the Snohomish Basin
 - Tulalip tribal fishery
- Broodstock concerns remain
 - Wallace-7/22: 2,537 hatchery, 20 wild
 - 231 hatchery, 2 wild pond mortalities
- Broodstock Goals:
 - Wallace- 5,000
 - Bernie Gobin – 1,700
- Co-managers will continue to monitor returns and evaluate scenarios for possible fishery opportunities.



Questions/Comments?

