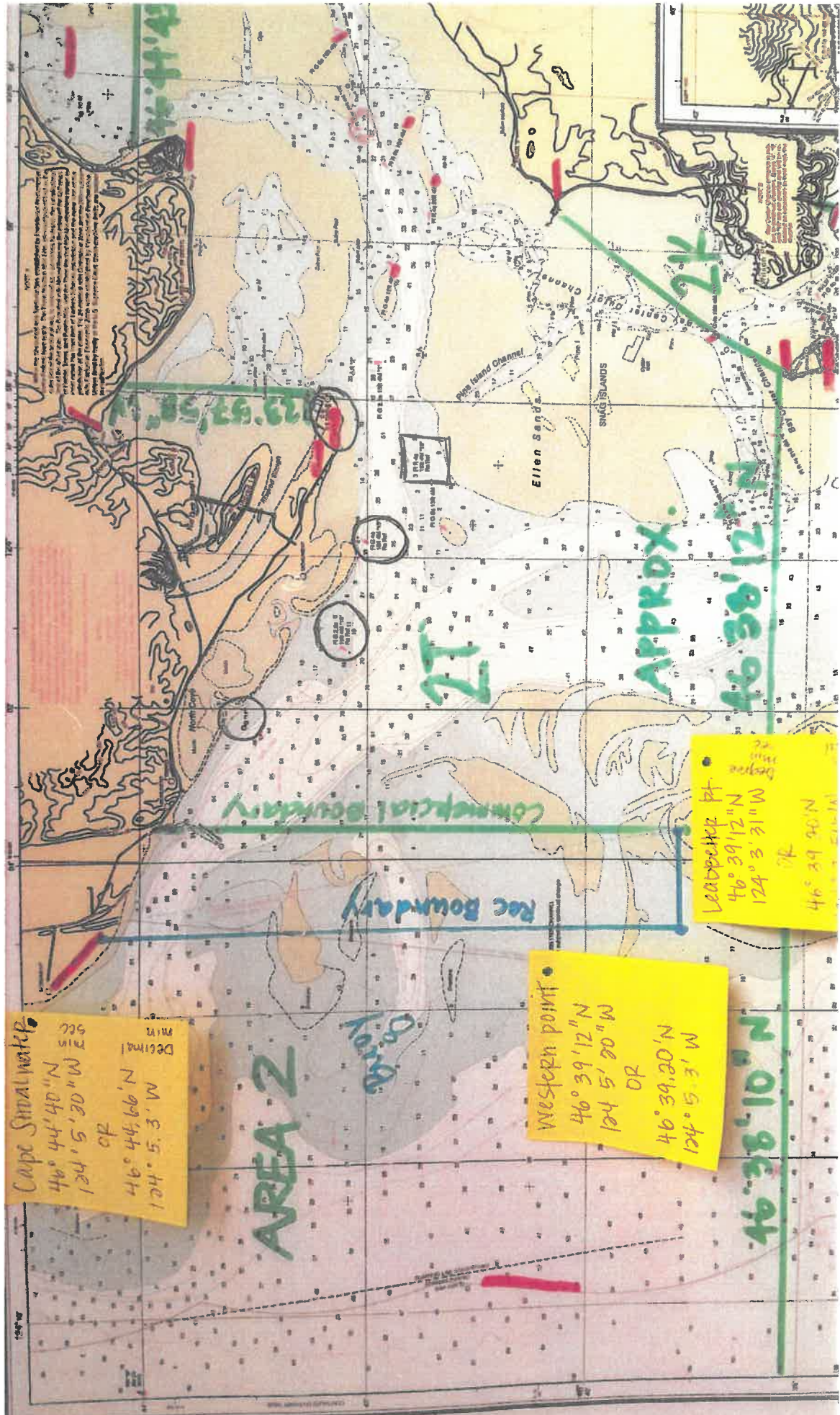


2018 Willapa Bay Model Output Summary

Model	Expected Harvest Rate			Expected Escapement		Policy Priorities						Allocation % by Sector				
	Willapa River ≤ 20%		Commercial Willapa Bay ≤ 9%	Chum Impacts ≤ 10%	Chinook Goal=4,353	Coho Goal=13,600	Willapa Bay Total Expected Harvest		Chinook		Coho		Chinook		Coho	
	Willapa River ≤ 20%	Naselle River ≤ 20%	Commercial Willapa Bay ≤ 9%	Chum Impacts ≤ 10%			Rec	Comm	Rec	Comm	Rec	Comm	Rec	Comm	Rec	Comm
A	19.1%	16.5%	8.8%	10.6%	3,150	13,687	13,115	6,465	8,517	7,636	67.0%	33.0%	52.7%	47.3%		
B	18.2%	17.2%	9.4%	13.0%	3,160	13,687	13,083	6,487	8,517	7,636	66.9%	33.1%	52.7%	47.3%		
C	17.6%	16.9%	9.4%	13.0%	3,182	13,964	10,433	6,487	7,577	7,636	61.7%	38.3%	49.8%	50.2%		
D	16.3%	16.5%	9.4%	13.0%	3,222	14,358	8,274	6,487	6,403	7,636	56.1%	43.9%	45.6%	54.4%		
E	18.8%	16.7%	9.0%	10.0%	3,153	14,939	12,953	6,366	6,652	6,690	67.0%	33.0%	49.9%	50.1%		
F	18.8%	16.7%	9.0%	10.0%	3,153	15,466	12,953	6,366	5,128	6,690	67.0%	33.0%	43.4%	56.6%		

Fishery Description

Model		Total Bag Limit	Chinook Fishery	Natural Coho Bag Limit	Chum
A	Base Model	Last year's schedule (Rec & Commercial) with 2018 Forecasted Abundances			
B	Marine	4	MSF starting July 1	4	Retention
	Freshwater	4	MSF	4	Retention
	Commercial	2017 Schedule	Tangle nets prior to Sept 15		Retention prior to Oct. 13
			Chinook MSF in November		
C	Marine	3	MSF starting July 1	3	Retention
	Freshwater	3	MSF	3	Retention
	Commercial	2017 Schedule	Tangle nets prior to Sept 15		Retention prior to Oct. 13
			Chinook MSF in November		
D	Marine	2	MSF starting July 1	2	Retention
	Freshwater	2	MSF	2	Retention
	Commercial	2017 Schedule	Tangle nets prior to Sept 15		Retention prior to Oct. 13
			Chinook MSF in November		
E	Marine	3	MSF starting August 1	2	Retention
	Freshwater	4	MSF	1	Retention
	Commercial		Tangle nets prior to Sept 15		Retention prior to Oct. 13
			Chinook MSF in November		
F	Marine	3	MSF starting August 1	1	Retention
	Freshwater	4	MSF	1	Retention
	Commercial		Tangle nets prior to Sept 15		Retention prior to Oct. 13
			Chinook MSF in November		



Cape Smeal water p.
 46° 44' 40" N
 124° 5' 50" W
 or
 46° 44.66' N
 124° 5.3' W

AREA 2

Dairy

Western point
 46° 39' 12" N
 124° 5' 20" W
 or
 46° 39.20' N
 124° 5.3' W

Leadbetter Pt
 46° 39' 12" N
 124° 3' 21" W
 or
 46° 39' 00" N

46° 38' 10" N

APPROX.

46° 38' 12" N

2T

2K

Commercial Boundary

Rac Boundary

Western point

Leadbetter Pt

46° 39.20' N

46° 39' 12" N

124° 5.3' W

124° 3' 21" W

46° 38' 10" N

46° 39' 00" N

46° 39' 12" N

124° 5' 20" W

124° 5' 3' W

124° 3' 21" W

124° 5' 3' W

2018 WILLAPA BAY FISHERY SUMMARY

CHINOOK										
		Hatchery			Natural			Total		
		Willapa North	Nemah Palix	Naselle Bear	Willapa North	Nemah Palix	Naselle Bear	Willapa North	Nemah Palix	Naselle Bear
2018 Pre-Season Runsize	40,257	16,055	19,580	4,622	3,838	2,195	490	1,153		
HATCHERY										
	Total Hatchery	Hatchery WB Origin	Willapa North	Nemah Palix	Naselle Bear					
Commercial Catch	6,021	6,021	2,137	3,015	870					
Commercial Impacts										
Commercial Harvest Rate (HR)	15.0%	13.3%	15.4%	18.8%						
Recreational Marine Catch	4,585	4,129	199	257						
Recreational Marine HR	11.4%	25.7%	1.0%	5.6%						
Recreational Freshwater Catch	8,028	865	6,672	491						
Recreational FW HR	19.9%	5.4%	34.1%	10.6%						
Expected Escapement	21,623	8,925	9,694	3,004						
Total Exploitation Rate	46.3%	44.4%	50.5%	35.0%						

NATURAL					
Total Natural	Natural WB Origin	Willapa North	Nemah Palix	Naselle Bear	
2	1	1	0	0	
407	343	140	54	150	
	9.0%	6.4%	11.1%	13.0%	
	285	254	2	29	
	7.4%	11.6%	0.5%	2.5%	
	55	19	22	14	
	1.4%	0.9%	4.4%	1.2%	
	3,153	1,781	412	960	
	17.8%	18.8%	16.0%	16.7%	

Total Commercial Days Scheduled						
Stat Week	2T	2U	2N	2R	2M	
32	0	0	0	0	0	
33	0	0	0	0	0	
34	0	0	0	0	0	
35	0	0	0	0	0	
36	0	0	0	1	1	12 hr openings, CHK MSF and Chum Retention allowed. 2M, N, R Tangle Net
37	0	0	2	2	2	
38	1	4	5	2	3	
39	2	5	5	2	3	12 hr openings, CHK MSF & Chum Retention allowed, 2U Tangle Net
40	4	5	4	2	3	
41	2	4	4	3	3	
42	0	0	0	0	0	12 hr openings, CHK MSF, Chum Release required wk 44, 2U Tangle Net
43	0	0	0	0	0	
44	3	3	3	3	2	
45	2	2	2	2	2	
46	4	4	4	4	4	24-hr days, Chinook MSF, Chum Release required, Gillnet, small mesh gear
47	5	5	5	5	5	
48	5	5	5	5	5	
49	0	0	0	0	0	
Total	28	37	39	31	33	

COHO										
		Hatchery			Natural			Total		
		Willapa North	Nemah Palix	Naselle Bear	Willapa North	Nemah Palix	Naselle Bear	Willapa North	Nemah Palix	Naselle Bear
2017 Pre-Season Runsize	35,415	6,976	0	28,439	18,972	10,678	2,731	5,562		
HATCHERY										
	Total Hatchery	Willapa North	Nemah Palix	Naselle Bear						
Commercial Catch	4,470	1,305	0	3,164						
Commercial Harvest Rate (HR)	12.6%	18.7%	0.0%	11.1%						
Recreational Marine Catch	2,969	632	0	2,337						
Recreational Marine HR	8.4%	9.1%	0.0%	8.2%						
Recreational Freshwater Catch	1,870	268	0	1,603						
Recreational FW HR	5.3%	3.8%	0.0%	5.6%						
Expected Escapement	26,106									
Total Exploitation Rate	26.3%									

NATURAL				
Total Natural	Willapa North	Nemah Palix	Naselle Bear	
2,220	1,819	301	100	
11.7%	17.0%	11.0%	1.8%	
1,495	1,197	185	114	
7.9%	11.2%	6.8%	2.0%	
318	172	2	144	
9.6%	1.6%	0.1%	2.6%	
14,939				

TOTAL CHUM	
2017 Pre-Season Runsize	39,932
Commercial Catch	3,644
Commercial Harvest Rate (HR)	9.1%
Recreational Marine Catch	148,485
Recreational Marine HR	0.4%
Recreational Freshwater Catch	216
Recreational FW HR	0.5%
Expected Escapement	35,924
Total Exploitation Rate	10.0%

Recreational Retention allowed

Recreational Regulations									
Area	Section	Season	Daily Limit	Adult Bag Limit	2-Pole	2-Pole Upper Extent	Natural CHK Retention	Natural Coho Retention	
Marine Area 2.1	new outer boundary line	July 1 - July 31	Same as Marine Area 2						
		Aug. 1 - Jan. 31	6	3	Yes	-	0	2	
Willapa River	mouth upstream to Hwy 6 Bridge	Aug. 1 - Jan. 31	6	4	Yes	2nd Bridge on Camp One Rd.	0	1	
	Hwy 6 upstream to Fork Creek	Aug. 16 - Sept. 15	6	2	Yes		0	1	
		Sept. 16 - Jan. 31	6	4	Yes		0	1	
SF Willapa River	mouth to bridge on Pehl Rd	Aug. 1 Jan. 31	6	3	No	-	0	1	
Fork Creek	Fork Crk Hatchery rack upstream 500' at the fishing boundary sign	Oct. 1 - Nov. 30	6	3	No	-	0	1	
		Dec. 1 - Jan. 31	6	2	No	-	0	1	
North River	mouth upstream to Fall River	Oct. 1 - Jan. 31	6	4	No	-	0	1	
Smith Creek	mouth to Hwy 101 Bridge	Oct. 1 - Dec. 31	6	3	No	-	0	1	
North Nemah River	Hwy 101 Br. to Nemah Valley Rd. Br.	Aug. 1 - Jan. 31	6	4	No	-	0	1	
Nemah Valley Rd. Br. Upstream to Hancock Property Line approx. 1.66 M							Closed to Salmon		
	Hancock Property Line upstream approx 900' to Nemah Hatchery Br.	Aug. 16 - Sept 15, Seniors Only	6	4	No	-	0	1	
	Nemah Hatchery Bridge to Nemah Hatchery dam	Aug. 16 - Sept 15, Seniors Only	6	4	No	-	0	1	
	Nemah Hatchery dam upstream to ~2.5 RM to N700 Rd	Oct. 1 - Jan. 31	6	4	No	-	0	1	
	South and Middle forks	Sept. 1 - Jan. 31	6	4	No	-	0	1	
Palix River	Hwy 101 to mouth of Middle Fork	Sept. 1 - Jan. 31	6	4	No	-	0	1	
Niawiakum River	Hwy 101 Br. To the S. Bend/Palix Rd Br	Sept. 1 - Nov. 30	6	2	No	-	0	1	
Naselle River	mouth (Hwy 101) upstream to Hwy 4 Br.	Aug. 1 - Oct. 31	6	4	Yes	Hwy 401	0	1	
		Nov. 1 - Jan. 31	6	4	Yes	Hwy 401	0	1	
	Hwy 4 Bridge upstream to Hatchery Bobber language here	Aug. 16 - Sept. 15	6	2	No	-	0	1	
		Sept. 16 - Oct. 31	6	4	No	-	0	1	
		Nov. 1 - Jan. 31	6	4	No	-	0	1	
		Oct. 16 - 31	6	4	No	-	0	1	
Hatchery upstream to Crown Bridge	Nov. 1 - Jan. 31	6	4	No	-	0	1		
Bear River	mouth upstream to Lime Quarry Rd	Sept. 1 - Jan. 31	6	4	No	-	0	1	

Seniors defined as 70 years+

2018 WILLAPA BAY FISHERY SUMMARY

CHINOOK										
Total Hatchery	Willapa North	Nemah Palix	Naselle Bear	Total Natural	Willapa North	Nemah Palix	Naselle Bear			
2018 Pre-Season Runsize	40,257	16,055	19,580	4,622	3,838	2,195	490	1,153		

HATCHERY				
Total Hatchery	Hatchery WB Origin	Willapa North	Nemah Palix	Naselle Bear
Commercial Catch	6,021	2,137	3,015	870
Commercial Impacts				
Commercial Harvest Rate (HR)	15.0%	13.3%	15.4%	18.8%

NATURAL				
Total Natural	Natural WB Origin	Willapa North	Nemah Palix	Naselle Bear
2	1	1	0	0
407	343	140	54	150
	9.0%	6.4%	11.1%	13.0%

Recreational Marine Catch	4,585	4,129	199	257
Marine HR	11.4%	25.7%	1.0%	5.6%
Recreational Freshwater Catch	8,028	865	6,672	491
FW HR	19.9%	5.4%	34.1%	10.6%

	285	254	2	29
	7.4%	11.6%	0.5%	2.5%
	55	19	22	14
	1.4%	0.9%	4.4%	1.2%

Expected Escapement	21,623	8,925	9,694	3,004
Total Exploitation Rate	46.3%	44.4%	50.5%	35.0%

	3,153	1,781	412	960
	17.8%	18.8%	16.0%	16.7%

Total Commercial Days Scheduled						
Stat Week	2T	2U	2N	2R	2M	
32	0	0	0	0	0	
33	0	0	0	0	0	
34	0	0	0	0	0	
35	0	0	0	0	0	12 hr openings, CHK MSF and Chum Retention allowed, 2M, N, R Tangle Net
36	0	0	0	1	1	
37	0	0	2	2	2	
38	1	4	5	2	3	12 hr openings, CHK MSF & Chum Retention allowed, 2U Tangle Net
39	2	5	5	2	3	
40	4	5	4	2	3	
41	2	4	4	3	3	12 hr openings, CHK MSF, Chum Release required wk 44, 2U Tangle Net
42	0	0	0	0	0	
43	0	0	0	0	0	
44	3	3	3	3	2	
45	2	2	2	2	2	
46	4	4	4	4	4	24-hr days, Chinook MSF, Chum Release required, Gillnet, small mesh gear
47	5	5	5	5	5	
48	5	5	5	5	5	
49	0	0	0	0	0	
Total	28	37	39	31	33	

COHO							
Total Hatchery	Willapa North	Nemah Palix	Naselle Bear	Total Natural	Willapa North	Nemah Palix	Naselle Bear
2017 Pre-Season Runsize	35,415	6,976	0	28,439	18,972	10,678	5,562

HATCHERY				
Total Hatchery	Willapa North	Nemah Palix	Naselle Bear	
Commercial Catch	4,470	1,305	0	3,164
Commercial Harvest Rate (HR)	12.6%	18.7%	0.0%	11.1%

NATURAL			
Total Natural	Willapa North	Nemah Palix	Naselle Bear
2,220	1,819	301	100
11.7%	17.0%	11.0%	1.8%

Recreational Marine Catch	1,901	405	0	1497
Marine HR	5.4%	5.8%	0.0%	5.3%
Recreational Freshwater Catch	1,941	280	0	1661
FW HR	5.5%	4.0%	0.0%	5.8%

958	767	118	73
5.0%	7.2%	4.3%	1.3%
329	182	2	145
6.8%	1.7%	0.1%	2.6%

Expected Escapement	27,103			
Total Exploitation Rate	23.5%			

15,466			
18.5%			

TOTAL CHUM	
2017 Pre-Season Runsize	39,932
Commercial Catch	3,644
Commercial Harvest Rate (HR)	9.1%

Recreational Marine Catch	148,485
Marine HR	0.4%
Recreational Freshwater Catch	216
FW HR	0.5%

Recreational Retention allowed

Expected Escapement	35,924
Total Exploitation Rate	10.0%

Recreational Regulations									
Area	Section	Season	Daily Limit	Adult Bag Limit	2-Pole	2-Pole Upper Extent	Natural CHK Retention	Natural Coho Retention	
Marine Area 2.1	new outer boundary line	July 1 - July 31	Same as Marine Area 2						
		Aug. 1 - Jan. 31	6	3	Yes	-	0	1	
Willapa River	mouth upstream to Hwy 6 Bridge	Aug. 1 - Jan. 31	6	4	Yes	2nd Bridge on Camp One Rd.	0	1	
	Hwy 6 upstream to Fork Creek	Aug. 16 - Sept. 15	6	2	Yes		0	1	
		Sept. 16 - Jan. 31	6	4	Yes		0	1	
SF Willapa River	mouth to bridge on Pehl Rd	Aug. 1 - Jan. 31	6	3	No	-	0	1	
Fork Creek	Fork Crk Hatchery rack upstream 500' at the fishing boundary sign	Oct. 1 - Nov. 30	6	3	No	-	0	1	
		Dec. 1 - Jan. 31	6	2	No	-	0	1	
North River	mouth upstream to Fall River	Oct. 1 - Jan. 31	6	4	No	-	0	1	
Smith Creek	mouth to Hwy 101 Bridge	Oct. 1 - Dec. 31	6	3	No	-	0	1	
North Nemah River	Hwy 101 Br. to Nemah Valley Rd. Br.	Aug. 1 - Jan. 31	6	4	No	-	0	1	
Nemah Valley Rd. Br. Upstream to Hancock Property Line approx. 1.66 M							Closed to Salmon		
Hancock Property Line upstream approx 900' to Nemah Hatchery Br.		Aug. 16 - Sept 15, Seniors Only	6	4	No	-	0	1	
Nemah Hatchery Bridge to Nemah Hatchery dam		Aug. 16 - Sept 15, Seniors Only	6	4	No	-	0	1	
Nemah Hatchery dam upstream to ~2.5 RM to N700 Rd		Oct. 1 - Jan. 31	6	4	No	-	0	1	
South and Middle forks		Sept. 1 - Jan. 31	6	4	No	-	0	1	
Palix River	Hwy 101 to mouth of Middle Fork	Sept. 1 - Jan. 31	6	4	No	-	0	1	
Niawiakum River	Hwy 101 Br. To the S. Bend/Palix Rd Br	Sept. 1 - Nov. 30	6	2	No	-	0	1	
Naselle River	mouth (Hwy 101) upstream to Hwy 4 Br.	Aug. 1 - Oct. 31	6	4	Yes	Hwy 401	0	1	
		Nov. 1 - Jan. 31	6	4	Yes	Hwy 401	0	1	
	Hwy 4 Bridge upstream to Hatchery Bobber language here	Aug. 16 - Sept. 15	6	2	No	-	0	1	
		Sept. 16 - Oct. 31	6	4	No	-	0	1	
		Nov. 1 - Jan. 31	6	4	No	-	0	1	
		Oct. 16 - 31	6	4	No	-	0	1	
Hatchery upstream to Crown Bridge	Nov. 1 - Jan. 31	6	4	No	-	0	1		
Bear River	mouth upstream to Lime Quarry Rd	Sept. 1 - Jan. 31	6	4	No	-	0	1	

* Seniors defined as 70 years+