

2017 WAAC Meeting

May 25, 2017

Last Resort KOA

Meeting Ground Rules

- Everyone in the group is valuable and is treated with respect
- One person's concern is the group's concern
- Confine discussion to the meeting topic
- Listen to understand
- Do not interrupt
- No personal attacks

Management Plan Updates

- Highlights:
 - Floodplain Management Plan
 - Grant funded projects
 - Large Wood Projects continuing

Floodplain Management Plan

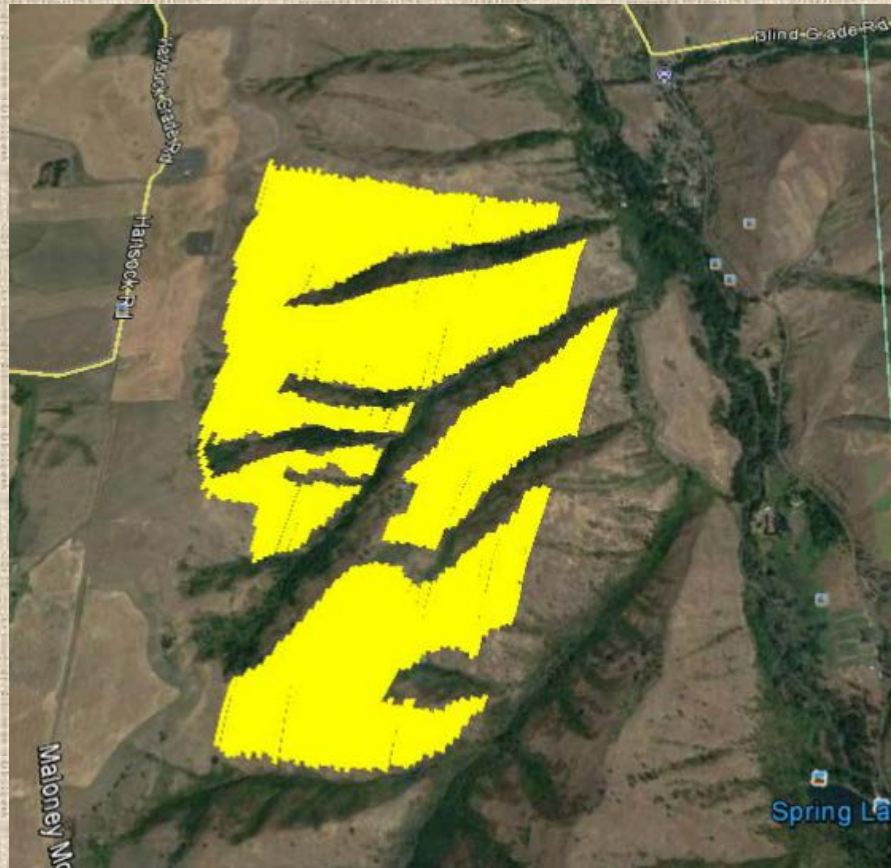
- Submitted for Capitol Projects for 2017-19
- Asked for \$4M, Currently in the budget for \$1M
 - Focus is Rainbow Lake
 - Dredge new lake footprint summer 2017
 - All permits, except Corps obtained
 - Contract awarded May 19
 - Rainbow Lake will be closed June 1 and begin draining
 - Construct settling basin and install pipeline in inlet canal
 - Construct new dam summer 2018
 - Remove old dam and create new wetlands

Floodplain Management Plan



Update on Grant Work

- Weed Spraying
 - 2016
 - 300 acres were aerially sprayed using RMEF funds

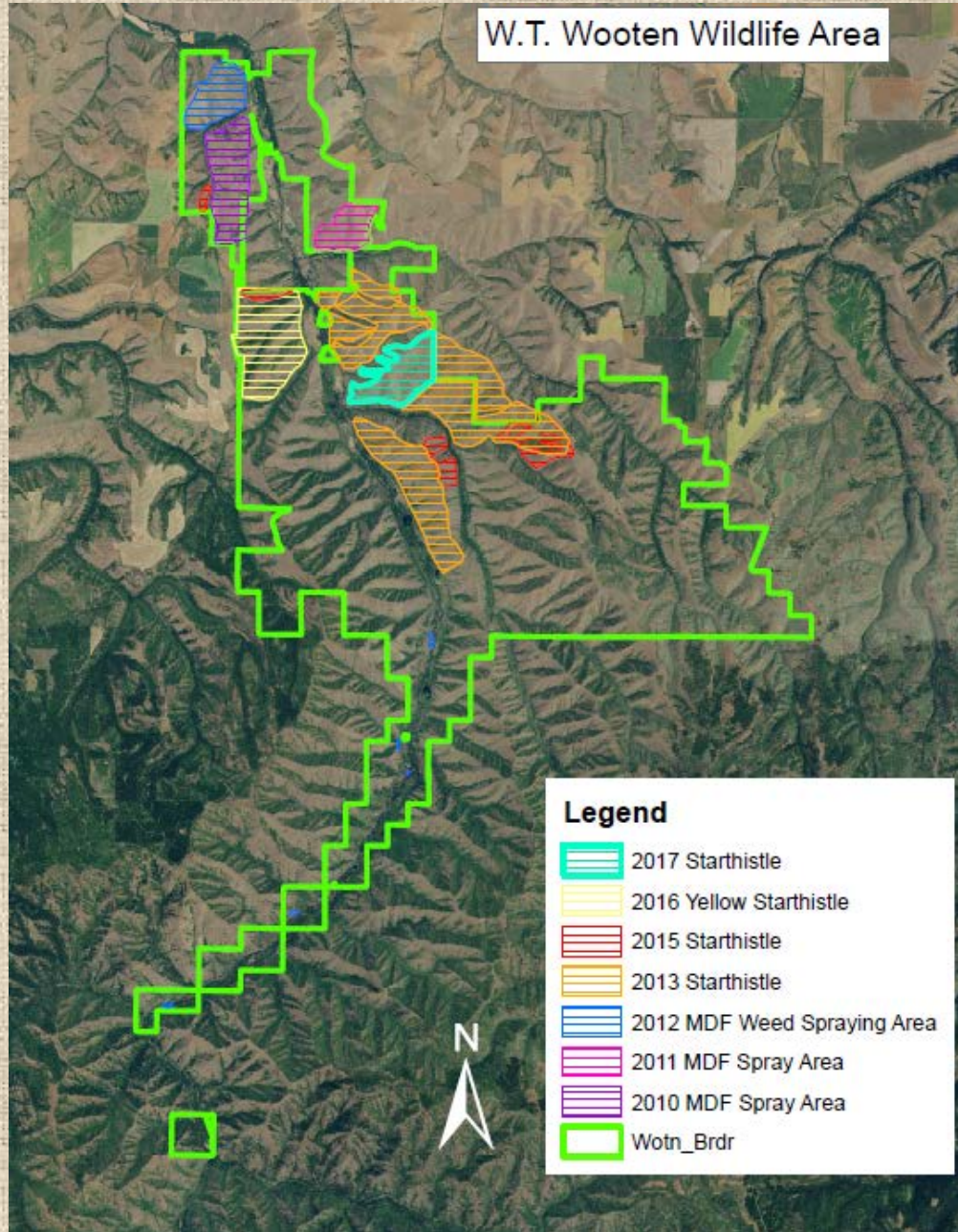


Update on Grant Work

- Weed Spraying
 - 2017
 - 250 acres were aerially sprayed using RMEF funds on May 2



Weed Spraying Continued



Large Wood Projects

- 2 projects occurring in summer 2017
 - Tucannon Campground to Big 4 Lake
 - Chinook Helicopter – ~July 15-27
 - Hartsock Unit
 - Some helicopter, some engineered
- All BPA funded for habitat restoration for spring Chinook and steelhead

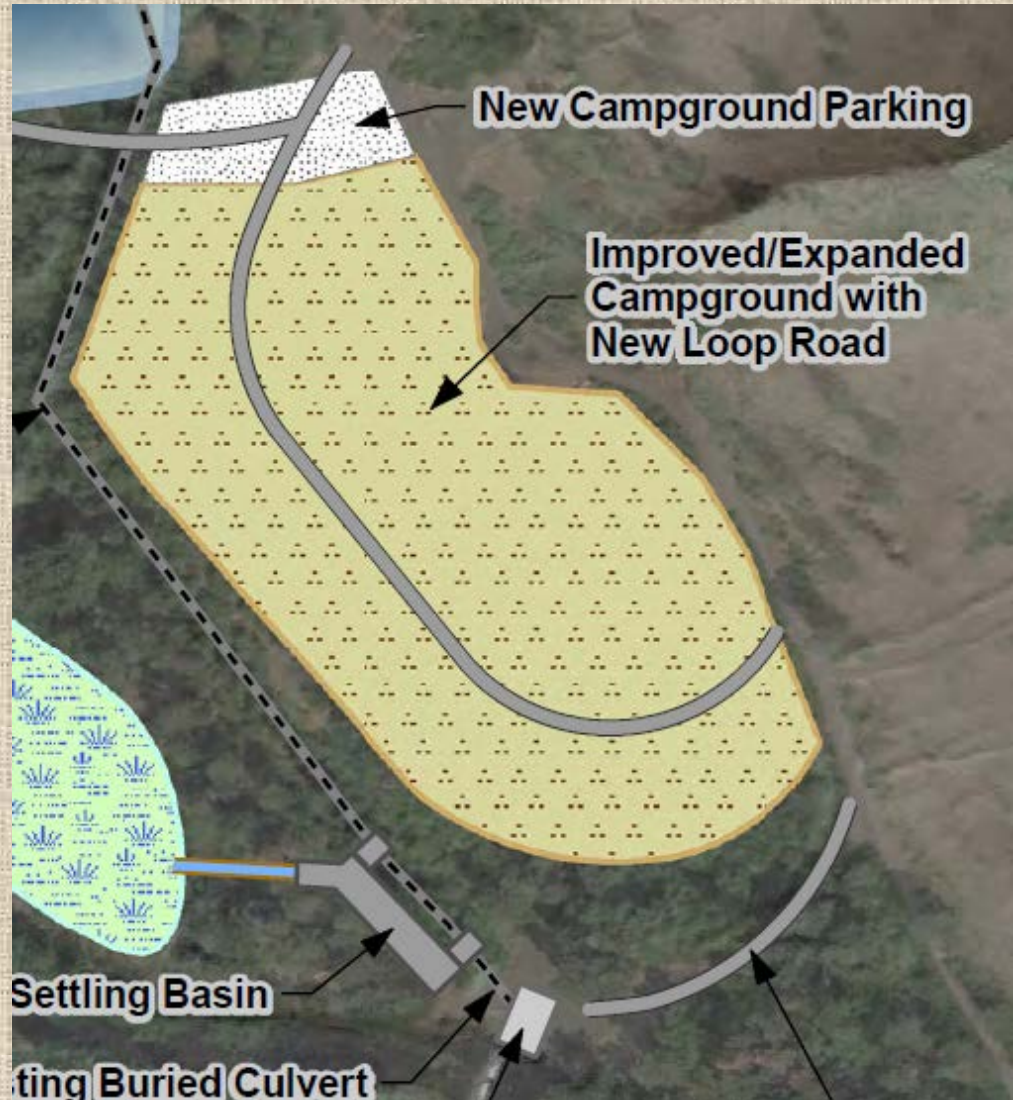
Future LW Projects

- 2018
 - Rainbow Inlet to Hatchery Bridge
 - Predominately engineered log jams

- Future
 - Camp Wooten to Tucannon CG Bridge
 - Designs have not been started yet
 - USFS lands near Guard Station
 - Designs have not been started yet

Campground 3 Upgrade

- Submitted an RCO Grant to upgrade Campground 3
- Did not receive RCO funding
 - Looking at other options
 - Able to use \$10K from Rainbow Lake money



Outhouse Replacement

- Still looking at funding options to replace the old fiberglass outhouses with new concrete outhouses
 - Currently have 6 old-style fiberglass outhouses
 - Not ADA approved
 - Possible statewide project



Bighorn Sheep Update

- Currently have 22 sheep in the herd
 - Only 2 lambs survived from last year (out of 10 born)
- First lamb seen May 5
 - 6 lambs so far; 1 mortality

Wolf Update

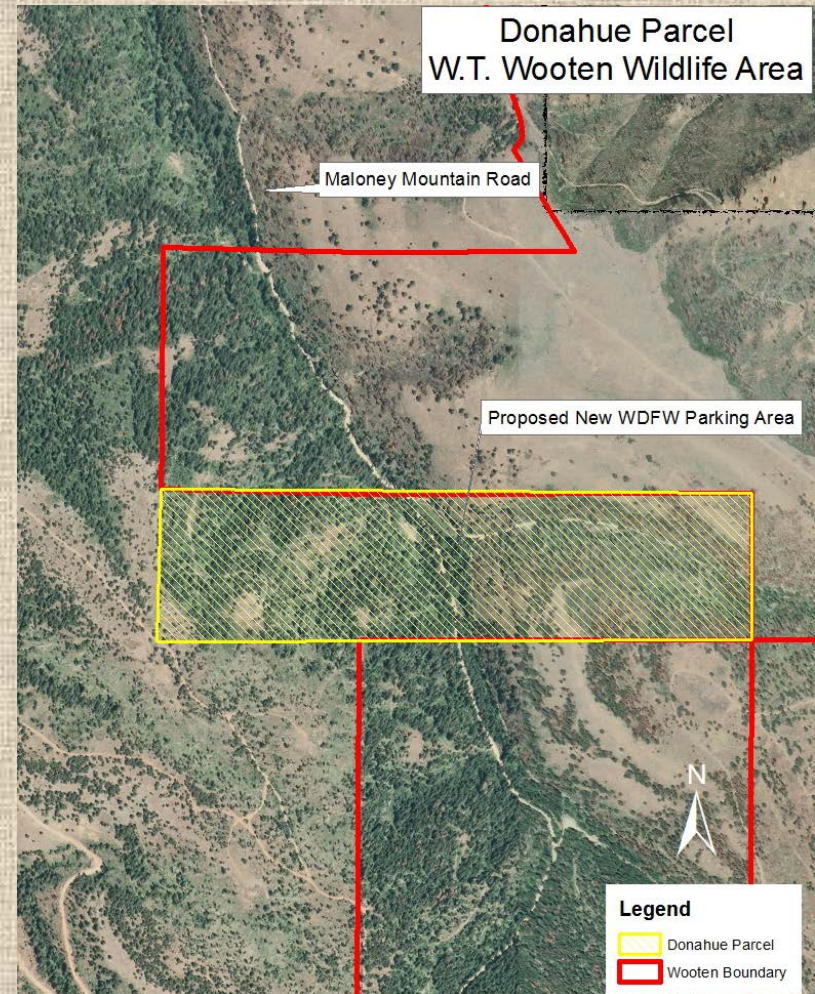
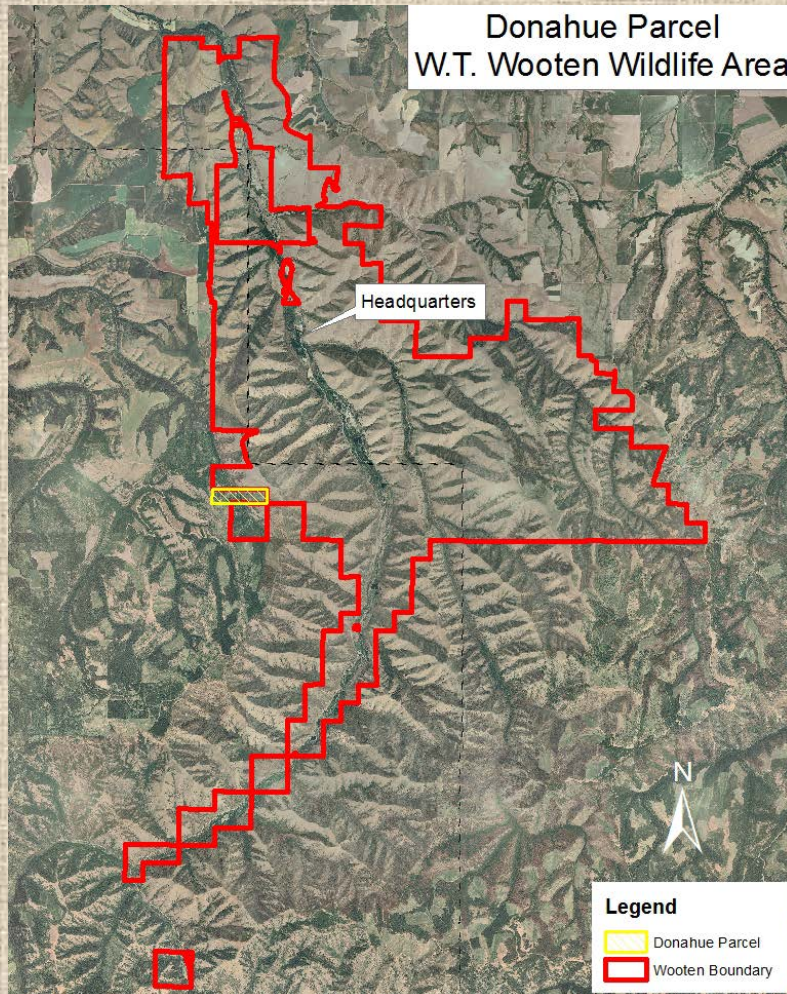
- Tucannon Pack
 - Captured and collared breeding female spring 2016
 - She died 2 weeks later; pups were too young to survive
 - Possible den in upper Cummings Creek area
 - Hoping to trap in next few weeks
- Touchet Pack
 - Denning in Robinette area
 - Collared female from Oregon with unmarked male
- Still have wolves from Oregon coming up, wandering around, and going back to Oregon

Walla Walla Property Update

- Stovall Road Unit
 - Seeded with grass seed in spring 2016
 - Poison hemlock is gone; replaced by Russian thistle and kochia
 - Plan to continue to treat as weather permits
- McDonald Bridge Unit
 - Severe weed issues along dike removal project
 - Plan to continue to treat as weather permits

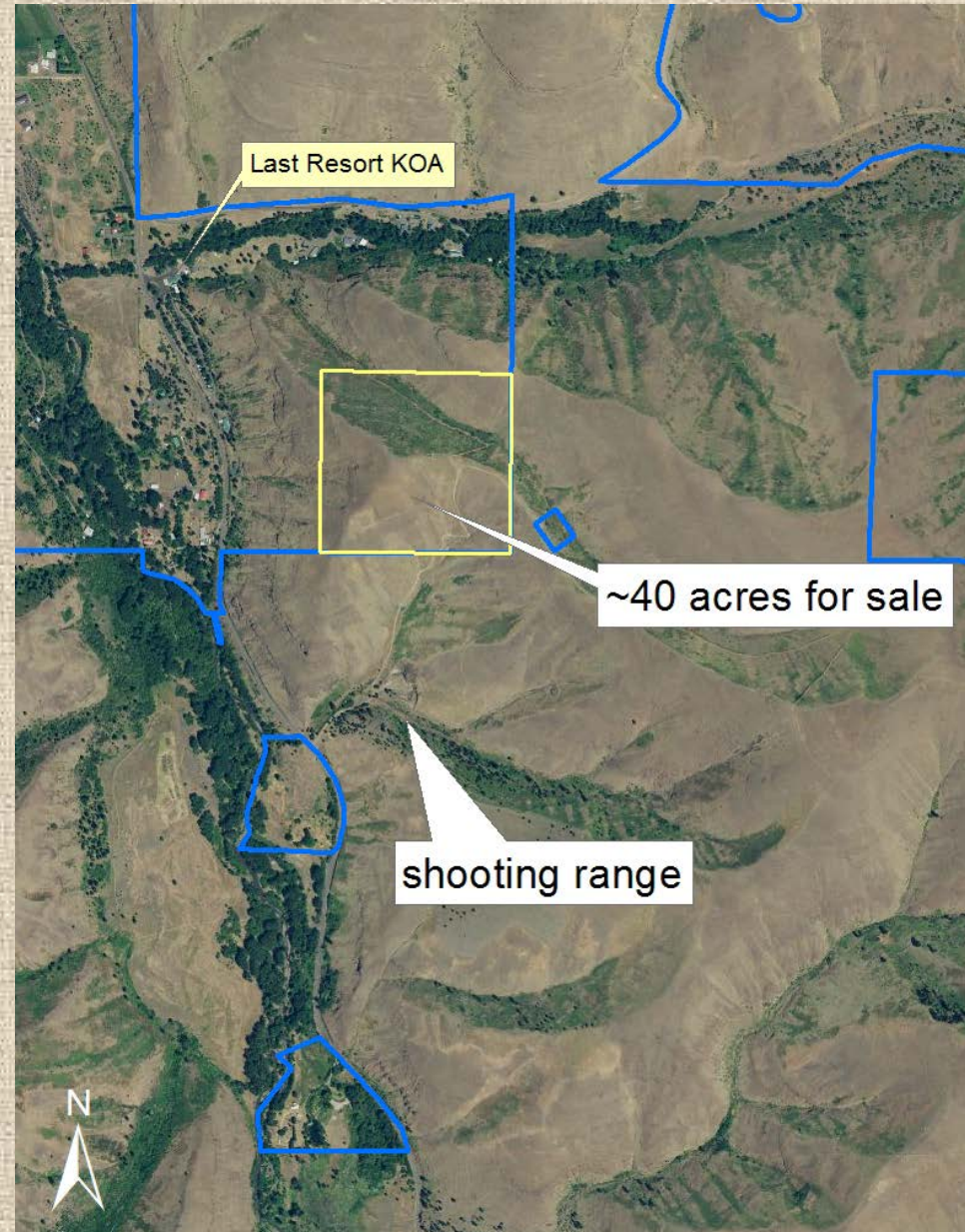
Donahue Property

- RMEF purchased 60 acre Donahue parcel
 - WDFW will purchase from RMEF (hasn't closed yet)



Goat Mountain Road Property

- 43 acres
- Columbia County
- Recreation Values
 - Hunting
 - Fishing
 - Wildlife viewing
- Currently in Lands 20/20 Process



WAAC Communication

- More communication with WAAC during Management Plan Rewriting process
 - Scoping
 - Review of draft plan and chance to comment
 - Review of Final Plan

Questions??



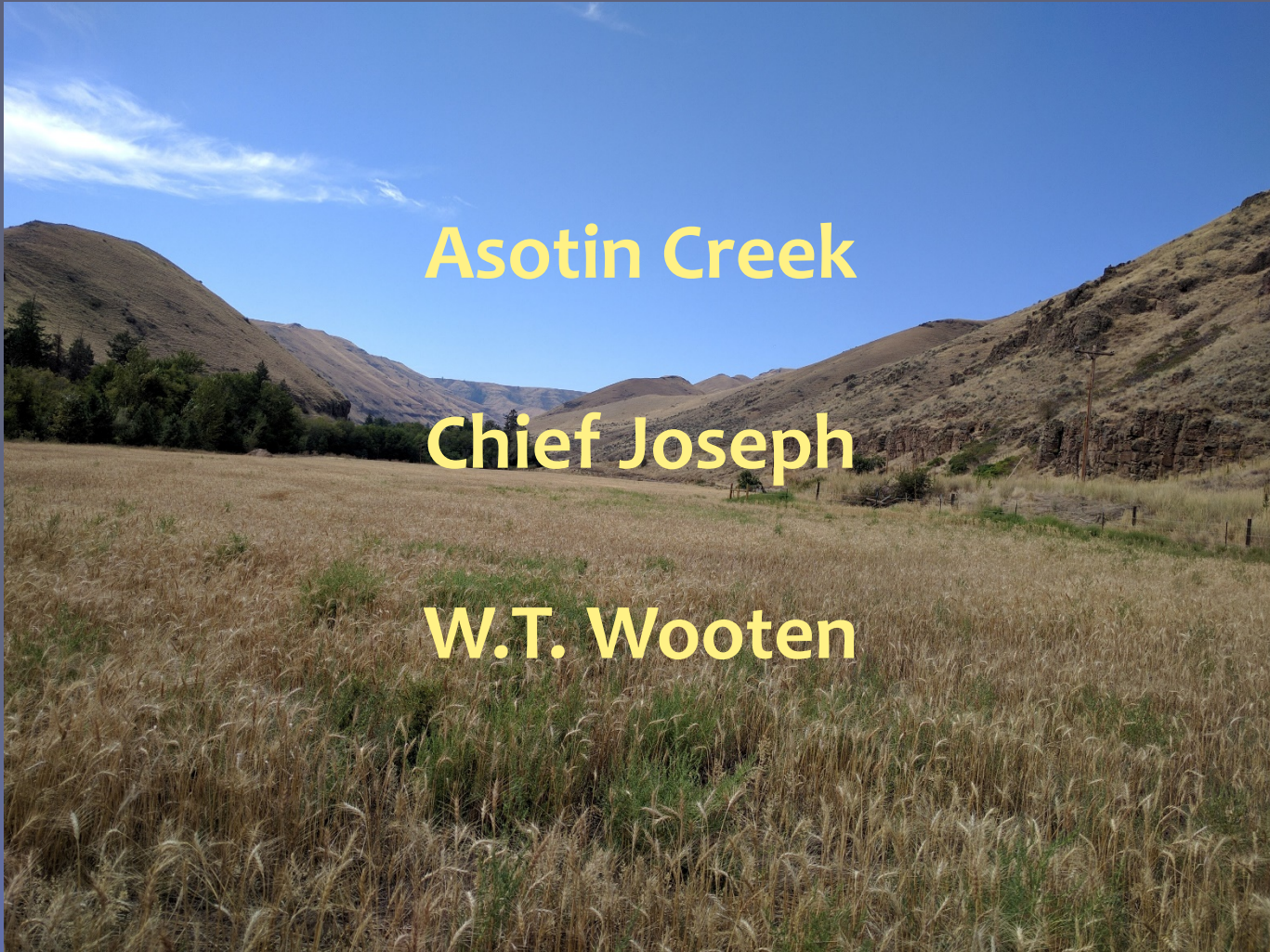
Blue Mountains Wildlife Areas



Public Scoping Meeting

May 23, 2017 – Clarkston
May 24, 2017 - Waitsburg

Blue Mountains Wildlife Areas



Asotin Creek

Chief Joseph

W.T. Wooten

Agenda

- 6:00 Open House
- 6:30 Staff Presentations
- 7:15 Open House
- 8:00 Adjourn



Meeting Purpose

- Your interest and issues
- The planning process
- Schedule
- Involvement and input



What interests you about wildlife area?

- ✓ Recreational activities
- ✓ Volunteer or conservation efforts
- ✓ Habitat and species protection
- ✓ Management activities



WDFW Mission

Preserve, protect and perpetuate fish, wildlife and ecosystems while providing sustainable fish and wildlife recreational and commercial opportunities.



DRAFT Wildlife Area Vision

Wildlife Areas showcase conservation, recreation, and restoration on public lands, and inspire and engage the citizens of Washington to care for our rich diversity of fish, wildlife, and habitat.

These lands also

- *support public values of open space, health and well-being, economic vitality and community character;*
- *are managed collaboratively with interested parties; and*
- *reflect each area's unique contribution to the vitality of Washington State.*

Purpose of Planning

- Sets vision for 8-10 years
- Guides activities on the wildlife area
- Ensures lands managed consistent with mission and funding
- Identifies priority actions
- Helps integrate agency goals
- Provides opportunity for engagement

The Plan

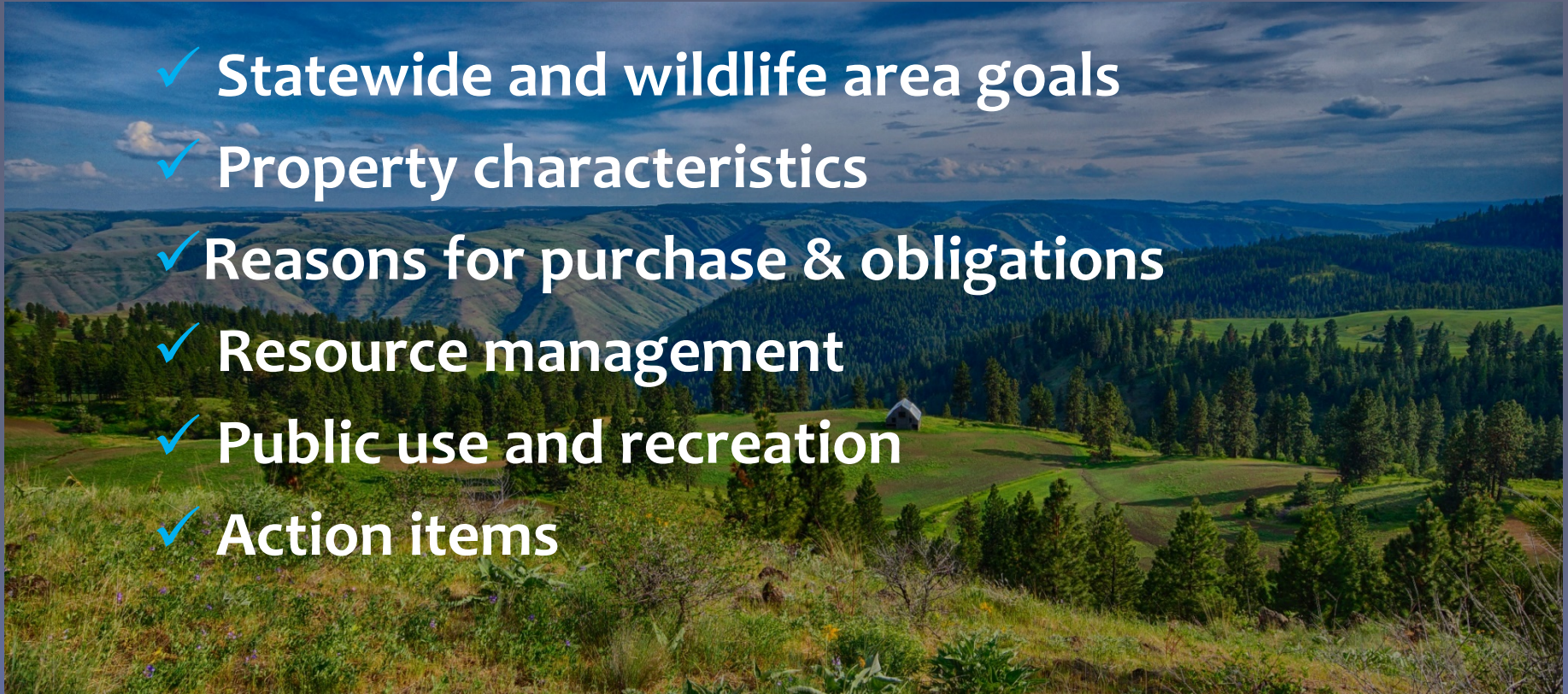
November 2016

Scotch Creek and Sinlahekin Wildlife Areas Management Plan



Plan Components

- ✓ **Statewide and wildlife area goals**
- ✓ **Property characteristics**
- ✓ **Reasons for purchase & obligations**
- ✓ **Resource management**
- ✓ **Public use and recreation**
- ✓ **Action items**



Wildlife Area Planning Process

Phase 1

- **Scoping**

Phase 2

- **Goals & Objectives Development**

Phase 3

- **Draft Plan**

Wildlife Area Advisory Committees

❖ W.T. Wooten Advisory Committee

- Committee in place
- Next meeting Thursday May 25, 2:00 – 4:00 pm
- <http://wdfw.wa.gov/about/advisory/wtw-waac/>

❖ Chief Joseph / Asotin Creek Advisory Comm.

- Being developed now
- Opportunity to apply
- Contact Bob Dice

Blue Mountains Wildlife Areas

Estimated Planning Process Timeline

2017 - 2018

| | April | May | June | Jul | Aug | Sept | Oct | Nov | Dec | Jan | Feb | Mar |
|--|----------------|-------------------|------------------|-----|-----|------------------|-----|------------------|-----|-----|-------------------|-----|
| | Agency Scoping | | Planning Team #1 | | | Planning Team #2 | | Planning Team #3 | | | | |
| | | Public Meeting #1 | | | | | | | | | Public Meeting #2 | |
| | | Wooten AC #1 | CJ/AC AC #1 | | | Wooten AC #2 | | Wooten AC #3 | | | | |
| | | | | | | CJ/AC AC #2 | | CJ/AC AC #3 | | | | |

Summary of the Blue Mountains Wildlife Areas

Bob Dice, *Wildlife Area Manager*

- Overview
- Purpose of Property
- Current Objectives



Chief Joseph

Overview

- 25,037 acres in Asotin & Garfield counties
- Grassland canyons, river and stream frontage, ponderosa pine, woodland, wildflower meadows
- Four units: Chief Joseph, Grouse Flats, Schumaker, and 4-0 Ranch
- Hunting, fishing, wildlife viewing, wildflowers



Chief Joseph

Purpose

- Enhancing bighorn sheep, mule deer, and upland game bird populations
- Protect habitat for steelhead and bull trout
- Reduce elk damage

Current Objectives

- Provide hunting and fishing opportunities
- Protect fish and wildlife habitat
- Manage for healthy ecosystems
- Support native plant populations (remove exotic species)

Asotin Creek

Overview

- 37,020 acres in Asotin and Garfield counties
- Grasslands, dry coniferous forest, canyons, salmon-bearing creeks
- Three units: Asotin Creek, George Creek, Weatherly
- Hunting, wildlife viewing, hiking



Asotin Creek

Purpose

- Protect big game winter range
- Protect habitat for steelhead and bull trout
- Protect shrub-steppe habitat for grouse and elk

Current Objectives

- Provide hunting other recreational opportunities
- Protect fish and wildlife habitat
- Manage for healthy ecosystems
- Support native plant populations (remove exotic species)

W.T. Wooten

Overview

- 16,481 acres in Garfield, Columbia, and WW counties
- Tucannon River valley, ponderosa pine woodlands, grassy hills
- Three units: W.T. Wooten (main), McDonald Bridge and Swegle Rd fishing access
- Fishing, camping, hunting, wildlife viewing



W.T. Wooten

Purpose

- Minimize conflict between wildlife and livestock
- Preserve habitat for wildlife and outdoor recreation
- Create improved fishing opportunities

Current Objectives

- Enhance habitat and improve the lakes for fishing and floodplain function
- Provide big game winter range
- Provide fishing, camping, and hunting opportunities
- Manage for healthy ecosystems

Q&A... Open House



Thank You!

Bob Dice, *Blue Mountains Wildlife Areas Manager*

(509) 758-3151

Bob.dice@dfw.wa.gov

Kari Dingman and David Woodall, *Assistant Managers*

Patricia Jatczak, *Project Manager*

(360) 902-2815

Patricia.Jatczak@dfw.wa.gov

BlueMntWLA@dfw.wa.gov

Blue Mountains Wildlife Areas

Wooten WAAC Meeting
May 24, 2017, Last Resort

MEETING NOTES

WDFW Staff Attending: Kari Dingman, *Wooten Asst. Wildlife Area Manager*; Patricia Jatczak, *Wildlife Area Planner*

Committee Members Attending: Justin Pearson, Jim Kirkpatrick, Joanne Kirkpatrick, Jason Towery, Marty Hall, Steve Martin, Larry Scoggins, Doug Maxey, Don Howard, and Kris Beuhlow

Wooten Management Activities

Kari discussed overall activities on the Wooten, and focused on the Rainbow Lake project. The lake is being dredged this year. There will be spraying for yellow star thistle. Two large wood projects will be constructed July 15-27, 2017.

Previous structures are mostly stable, even after high water.

General Comments from Committee Members about the wildlife area:

- Cougars are very visible now, and more should be taken out. There are less deer.
There is a new wolf pack, denning in Robinette.
- Are goats an option for weeds?
Not where there is poison hemlock.
- Should we engage citizens from other states? Lots of use by Oregon and Idaho.
- Does the agency have an idea of what they want the wildlife area to look like?
- Keep farming, logging, and grazing on the wildlife areas.
- Fish are a big issue, but don't forget about the importance of the uplands ... watersheds are important. Is there more you can do in the uplands?
Funding is a driver...there is money for fish, not so much for other things.
It is a huge balancing act...
- Lakes are a big draw. It is good to see progress made on fixing the lakes. They bring a lot of revenue into the community. There is a huge trickle-down effect. We should make sure to convey messages to the legislature about economy of recreational users.
- The main Tucannon road should be open to ATVs.
- 75-80% of visitors are from Tri-Cities area. Is there a way to get more money for infrastructure?
- Can you charge for camping like USFS?
Very complicated to do.

Wildlife Area Planning

Patricia provided an overview of the planning process for the Blue Mountains Wildlife Area, which includes Wooten, Asotin Creek, and Chief Joseph Wildlife areas. The same presentation was given that was provided at public meeting in Clarkston and Waitsburg.

There is another WAAC that is focusing on the Chief Joseph and Asotin Creek wildlife areas. Both WAACs will review all Goals and Objectives and Draft Plan.