

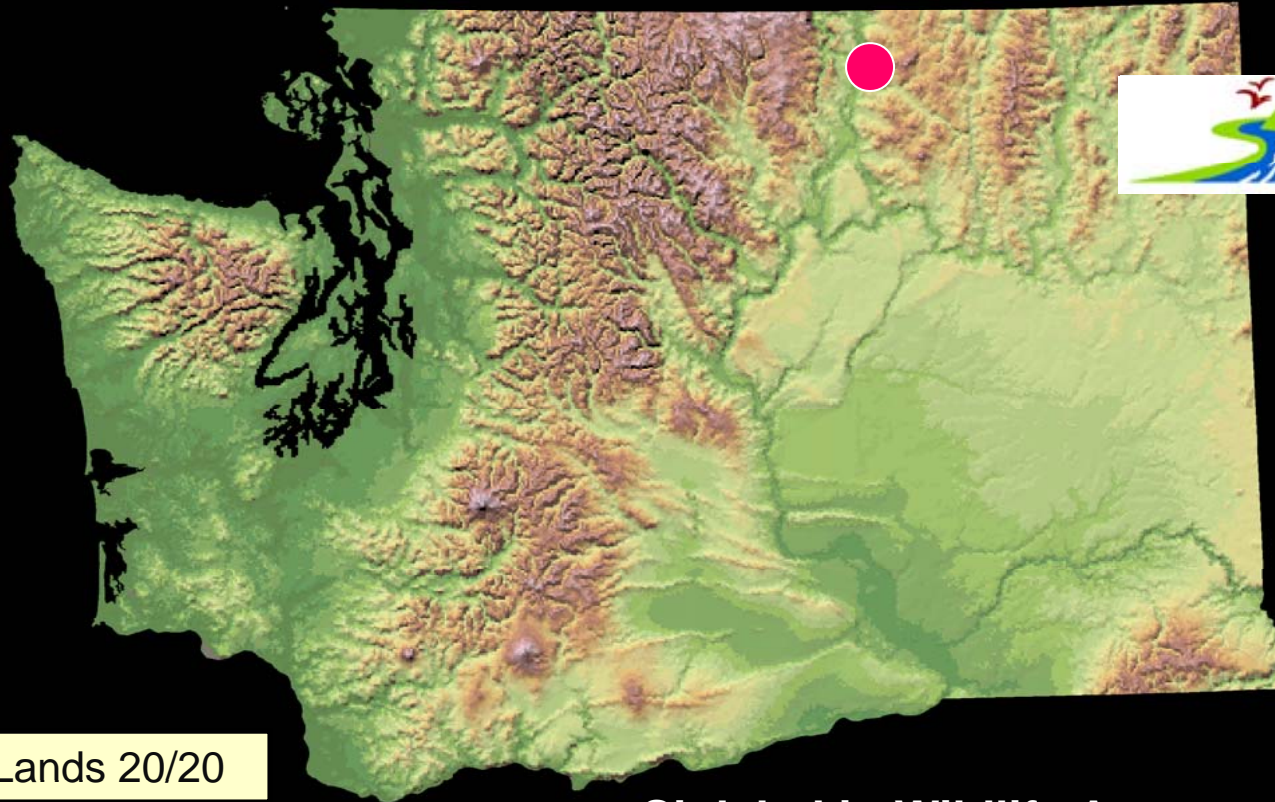
A wide-angle landscape photograph showing a river valley. In the foreground, a dirt road winds through a rocky, sparsely vegetated slope. The middle ground features a river flowing through a valley with patches of green grass and clusters of evergreen trees. The background consists of rugged, rocky mountains under a blue sky with scattered white clouds. The text "Land Transactions" is overlaid in large white font, underlined, with "February 3 & 4, 2012" below it in a smaller white font.

Land Transactions

February 3 & 4, 2012

Wilson – Hawkes Property Okanogan County

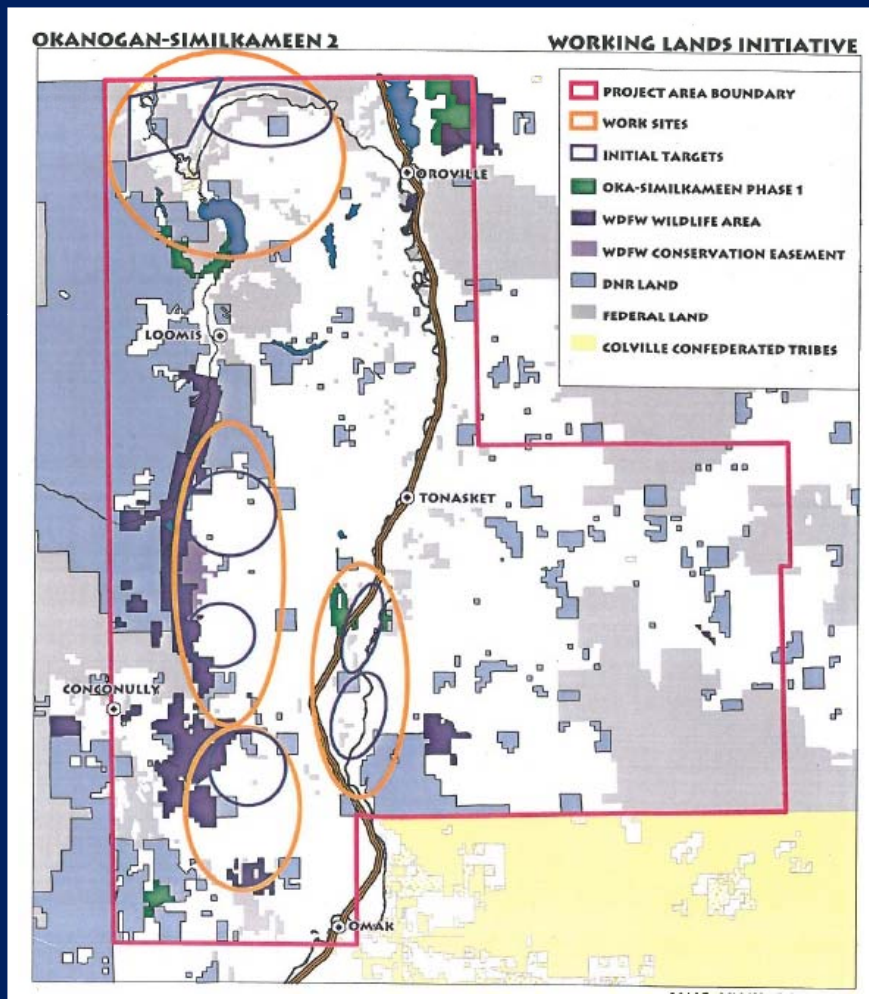
Project Location



WDFW Lands 20/20

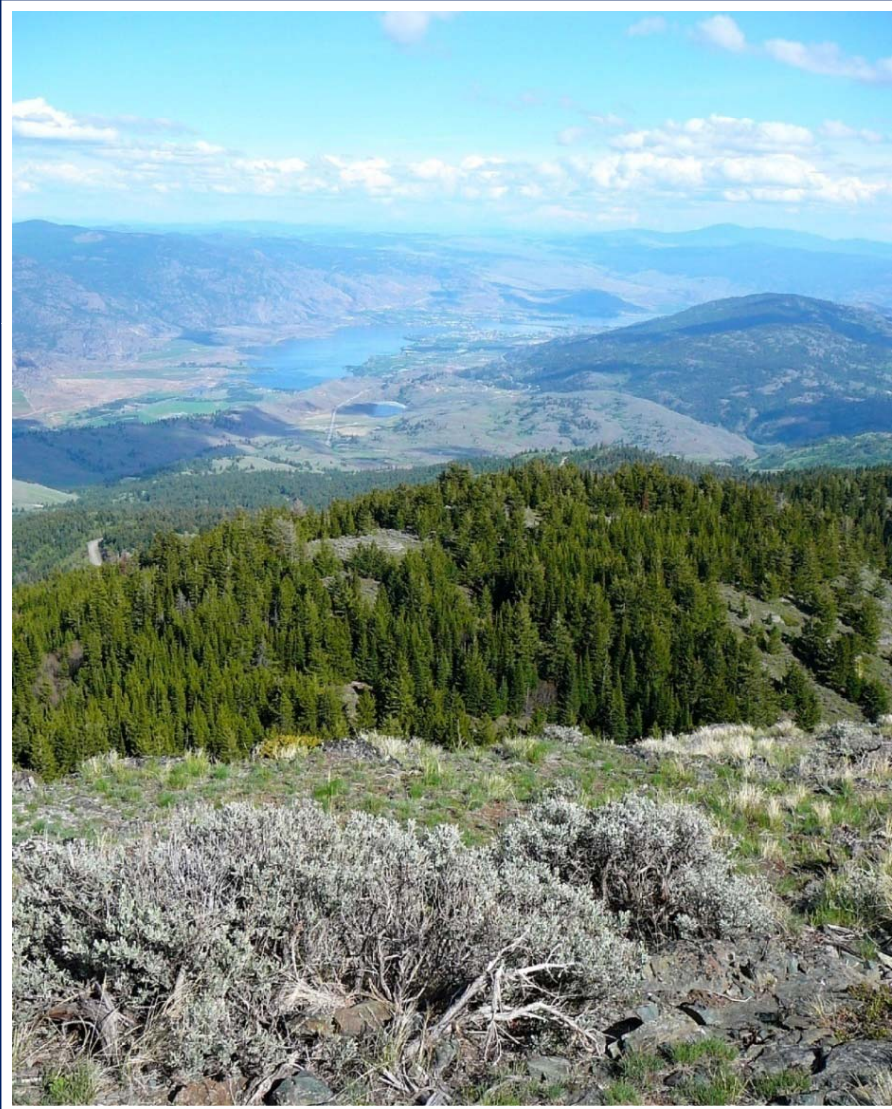
Sinlahekin Wildlife Area

Wilson – Hawkes Property Okanogan County



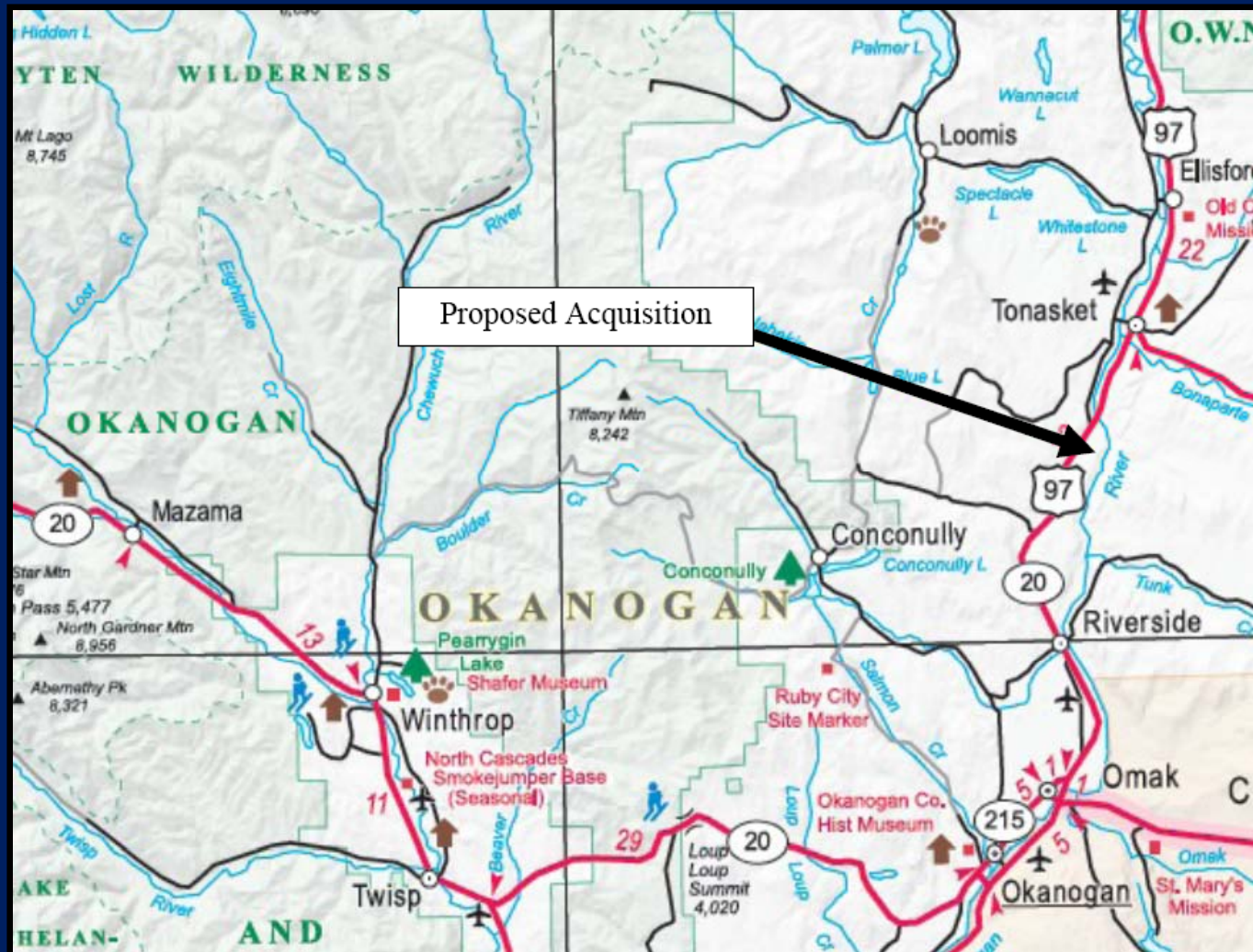
- Addresses the objectives of local, state, regional and international planning efforts.
- Okanogan Subbasin Plan
- Okanogan-Similkameen Conservation Corridor Program
- South Okanogan-Similkameen Conservation Program in Canada.
- Washington State Sharp-Tailed Grouse Management Plan

Wilson – Hawkes Property Okanogan County

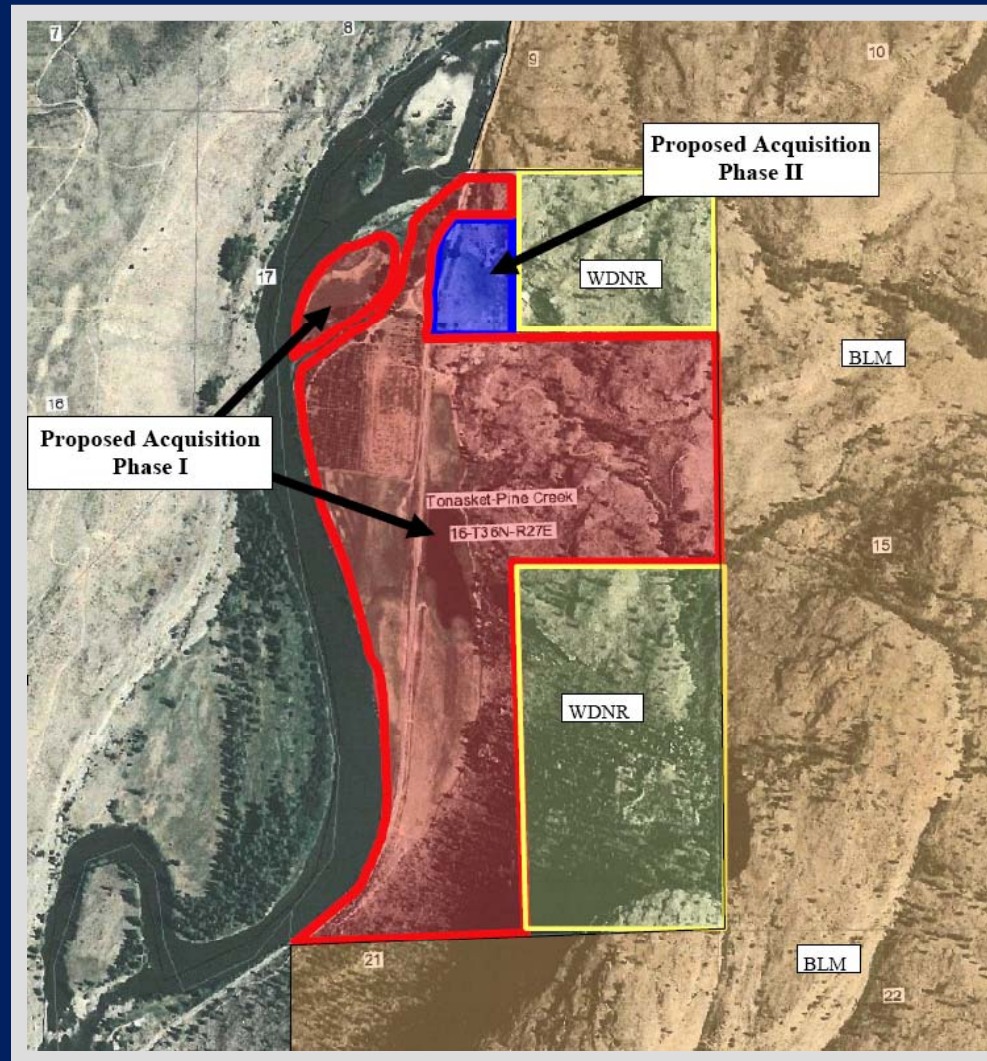


- Corridor linking the North Cascades and Kettle/Selkirk ecosystems.
- Low-elevation corridor linking the Columbia Basin with shrub-steppe/grassland habitats in Canada.

Wilson – Hawkes Property Okanogan County



Wilson – Hawkes Property Okanogan County



Wilson – Hawkes Property Okanogan County



Okanogan River



Chinook Salmon

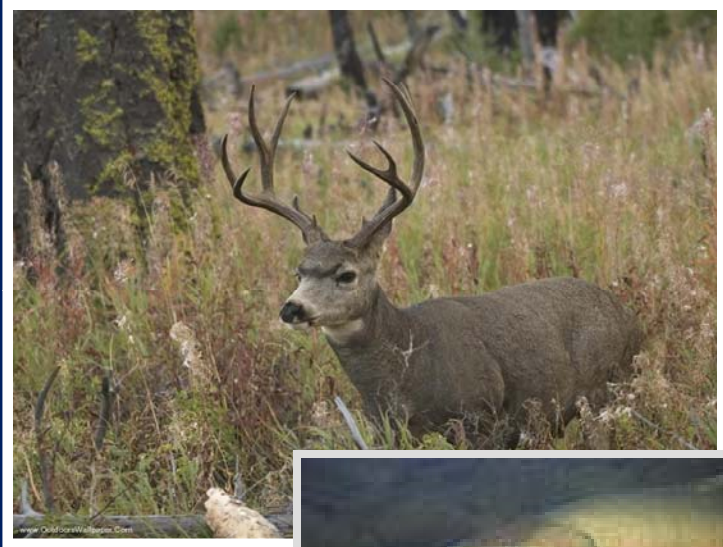


Steelhead



Mule Deer

Wilson – Hawkes Property Okanogan County



- Unit of the Sinlahekin Wildlife Area
- Purchase Funded by Grants:
USFWS Section 6
Salmon Recovery Funding Board
- Annual O & M Estimated at \$2,650
- Grant Funded Initial Weed Control
- Updated Weed Management Plan



Land Transactions
Questions