



REGIONAL FISHERIES

COALITION

**Presentation to
Washington Fish & Wildlife Commission
June 10, 2016**

WDFW-RFEG History & Relationship



RFEGs & WDFW 25 years of working together



REGIONAL FISHERIES
COALITION

14 RFEGs: Created by the Legislature in 1990 to work in communities across the state to recover salmon



WHAT WE DO



Habitat



Education and Outreach



Assessment and Monitoring



Enhancement



REGIONAL FISHERIES
COALITION

25 Year Impact



3831
Salmon
Projects

1118 miles of
stream opened

75,515,371
fish released

856 fish passage
projects

2015 Statewide Accomplishments

**\$15,229,526
Funds Leveraged**

52,778 Volunteer Hours

284 Projects



**REGIONAL FISHERIES
COALITION**

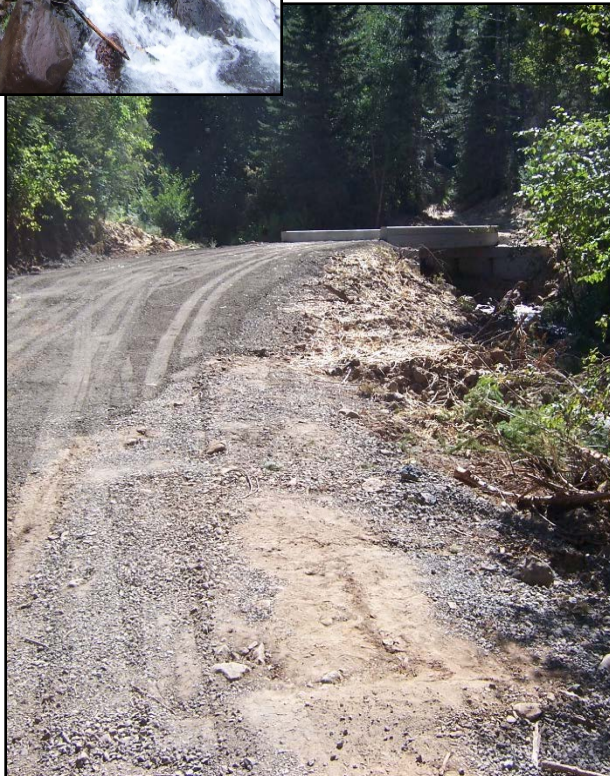
Riparian Restoration



RFEGS planted over 115,000 native trees and shrubs along salmon bearing waterways in 2015



REGIONAL FISHERIES
COALITION



Habitat

49 miles

Habitat Restoration

**Whitney Creek,
Tri-State Steelheaders**



REGIONAL FISHERIES
COALITION

Enhancement



1,579,300
Fish Released

HOOD CANAL STEELHEAD

16-year project to restore 3 steelhead populations & evaluate hatchery supplementation as a conservation strategy



REGIONAL FISHERIES
COALITION

Monitoring



1000's

Citizen Scientist
Volunteer Hours

SKAGIT FEG

Volunteers Assist With
Nearshore Monitoring



REGIONAL FISHERIES
COALITION



EDUCATION & OUTREACH

River Stewards



Nooksack Basin Partnership with USFS

- Began in 2003
- 2,000 people engaged/year
- 19,418 contacts
- 7,476 hours donated in ten years



REGIONAL FISHERIES
COALITION



June 10-11, 2016 WDFW Commission Meeting Presentation Information if subject to changes and amendments over time

Mid-Columbia Education Programs



- 20+ elementary schools
- Seven middle schools
- Five high schools



REGIONAL FISHERIES
COALITION

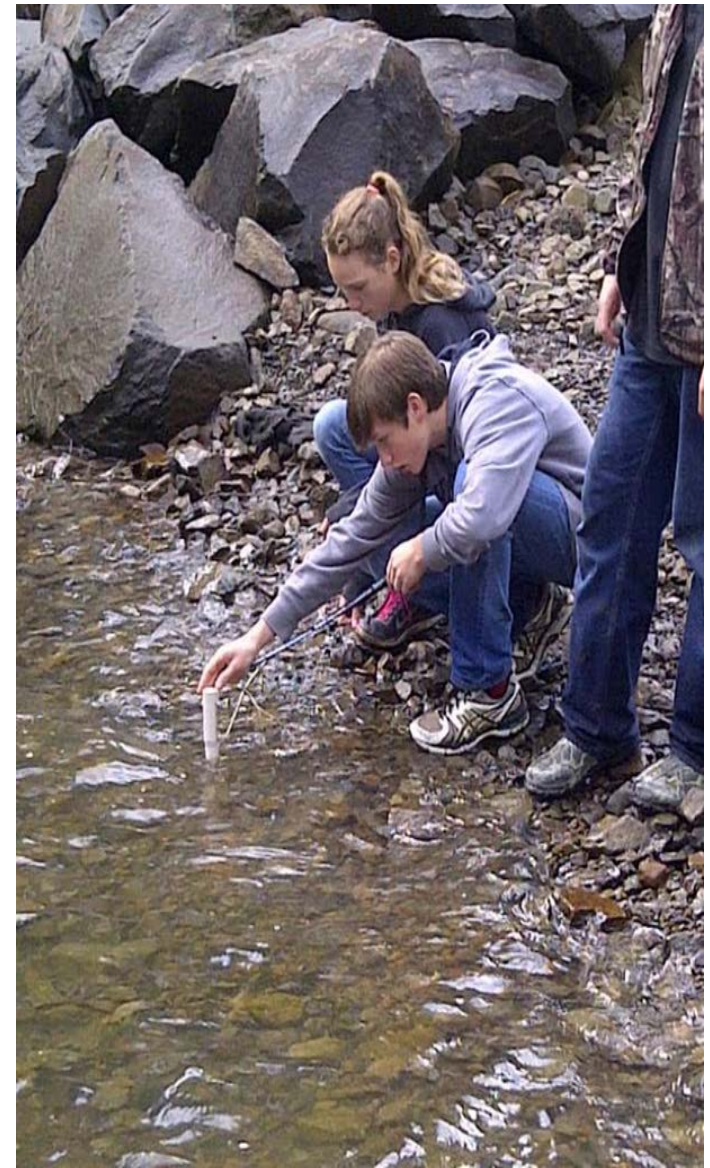
Elementary Education



REGIONAL FISHERIES
COALITION



Middle School Education



REGIONAL FISHERIES
COALITION



High School Education



REGIONAL FISHERIES
COALITION

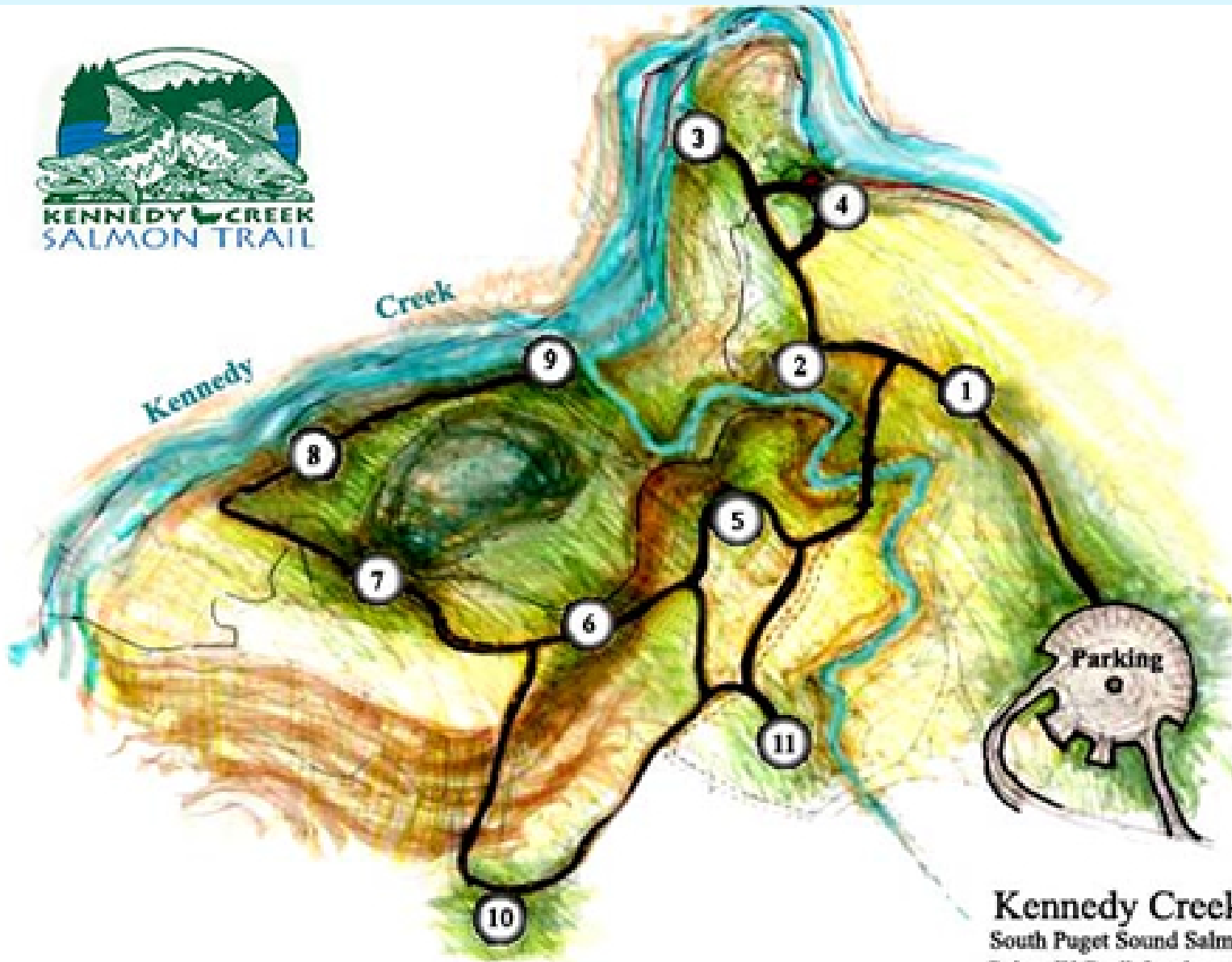
Kennedy Creek Salmon Trail



- Opened in 1999
- Partnership with Taylor Shellfish
- 5,000 visitors each year
- 35 volunteer docents donate 600 hours each year



REGIONAL FISHERIES
COALITION



Kennedy Creek Salmon Trail
South Puget Sound Salmon Enhancement Group
Robert W. Droil, Landscape Architect, PS

Kennedy Creek Salmon Trail





REGIONAL FISHERIES
COALITION

Legislative outreach

- Puget Sound Day in Washington DC
- Tours for elected officials and staff
- Tours feature programs and restoration projects across Washington State

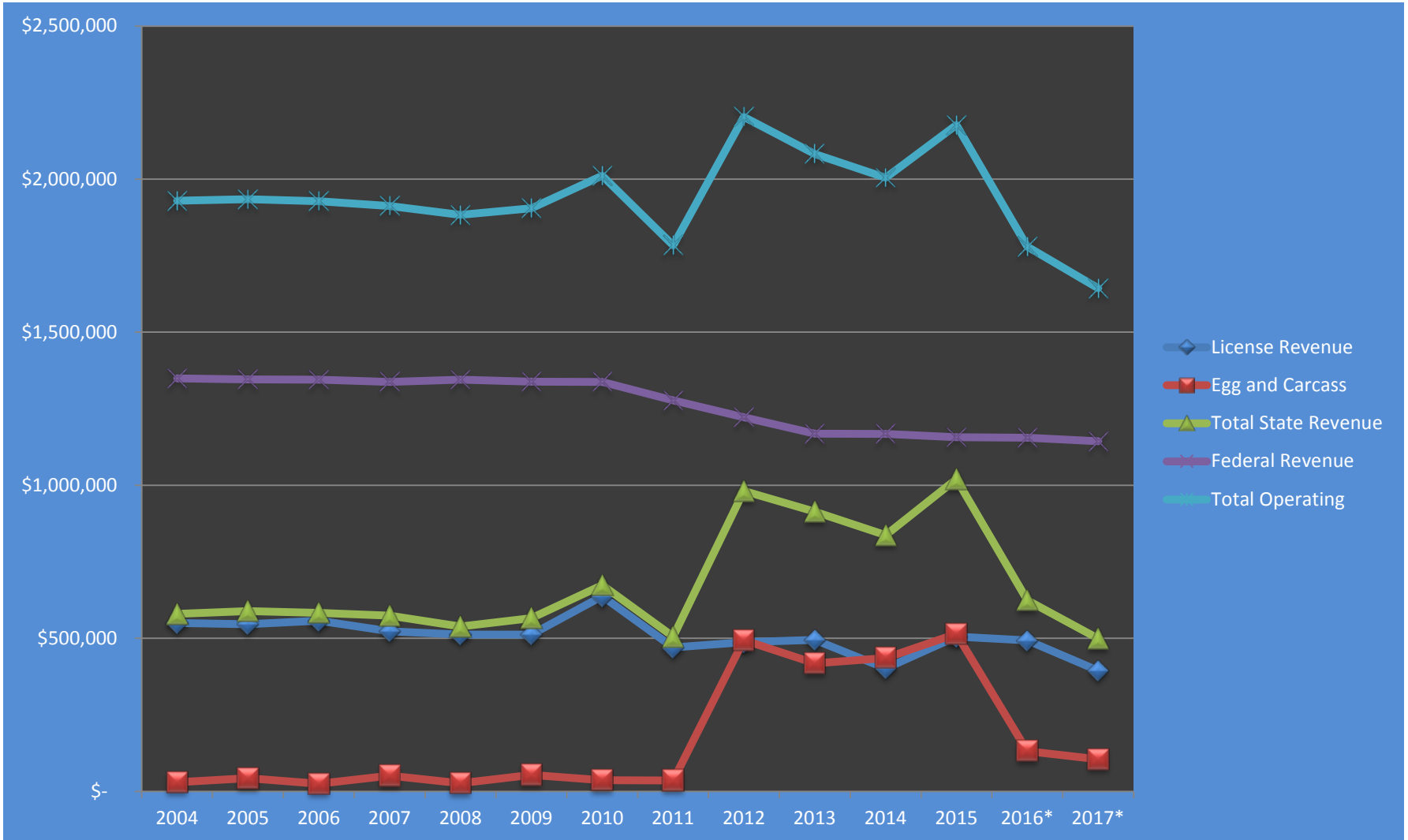








Program Revenue Declining



Wild Future Initiative Funding for RFEGs



REGIONAL FISHERIES
COALITION



REGIONAL FISHERIES

COALITION

THANK YOU!