

Pacific Halibut Management Overview

Fish and Wildlife Commission

August 5, 2016 - Olympia



Presentation Overview

- **Management Overview**
- **Roles and Processes for:**
 - **International Pacific Halibut Commission**
 - **Pacific Fishery Management Council**
 - **WDFW**
- **Review WDFW Management Efforts**
 - **Catch Accounting Responsibilities**
 - **Puget Sound Catch Estimates**
 - **Issues and Next Steps**

Management Overview

IPHC

- Biology & Research
- Conservation
- Set Annual Catch Quotas
- Management Oversight

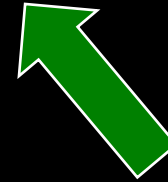
PFMC - NMFS

- Allocation Authority
- Rule-making Authority
- West Coast Coordination

WDFW

- Advisory Role
- Catch Accounting
- Facilitate Stakeholder Input
- Enforcement

Catch
Sharing Plan
(CSP)



IPHC Management Structure

IPHC

- Established by Convention in 1923
- 6 Commissioners (3 US/3 Canada); Presidential Appts
- Rotating Chairmanship and Annual Meeting (January)
- Decisions Forwarded to Governments for Approval

Conference Board

Harvesters
(Tribal, Sport,
Commercial);
Advise at
Annual Mtg

Processor Adv Grp

Advise at
Annual
Meeting

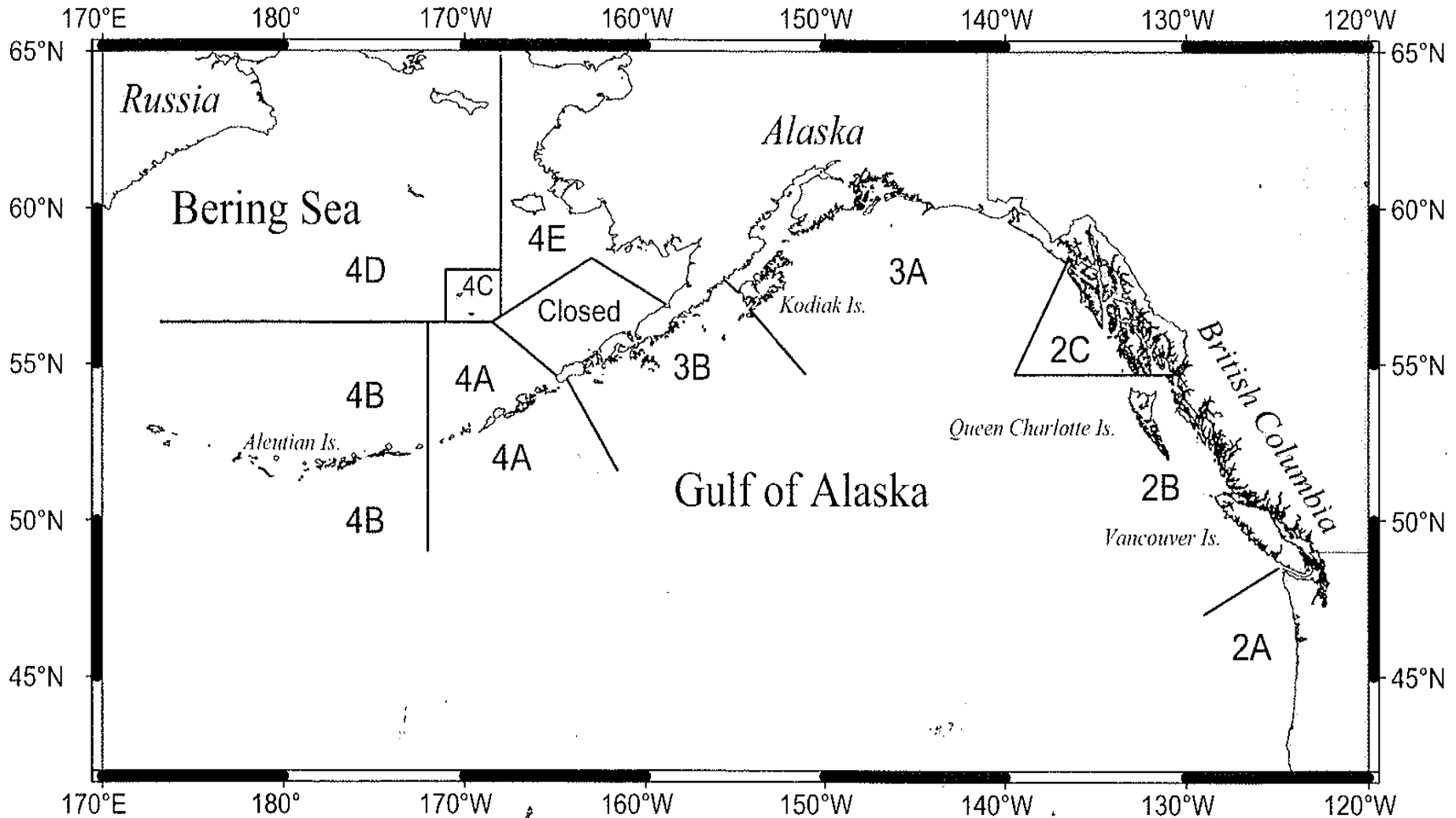
Scientific Review Board

Scientists;
Review Stock
Assessment
and Research

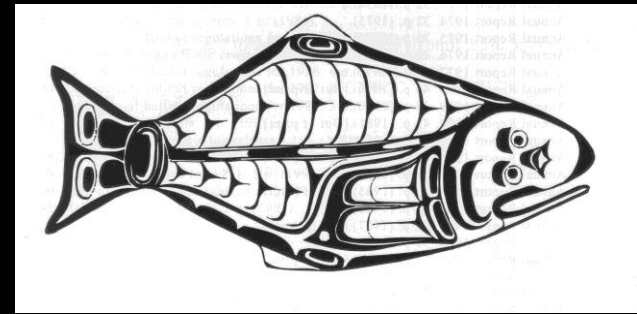
Mgmt Strategy Adv Board

Managers and
Stakeholders;
Evaluate
Policies and
Procedures

IPHC Regulatory Areas



IPHC Policies and Regulations



- **Achieve Conservation and Long-Term Fishery Sustainability**
 - Average Coastwide Harvest Rate: 19-20%
 - Harvest Rates for Specific Regulatory Areas (Lower in Spawning Area; Higher in Areas 2 and 3)
- **Commercial Harvest by Longline or Hook-and-Line Only**
 - Trawl Gear Prohibited
- **IPHC License Required for Commercial and Charter**
- **Set Commercial Regulations and General Sport Rules**

IPHC TAC Calculation

Annual Coastwide Stock Assessment

- Annual Longline Survey
- Adjustment Factors
 - Timing of the Survey
 - Hook Competition
- Total Constant Exploitation Yield (CEY)

Calculation of Total Allowable Catch (TAC) or Quota

Total CEY – Other Removals = Fishery CEY (= TAC)

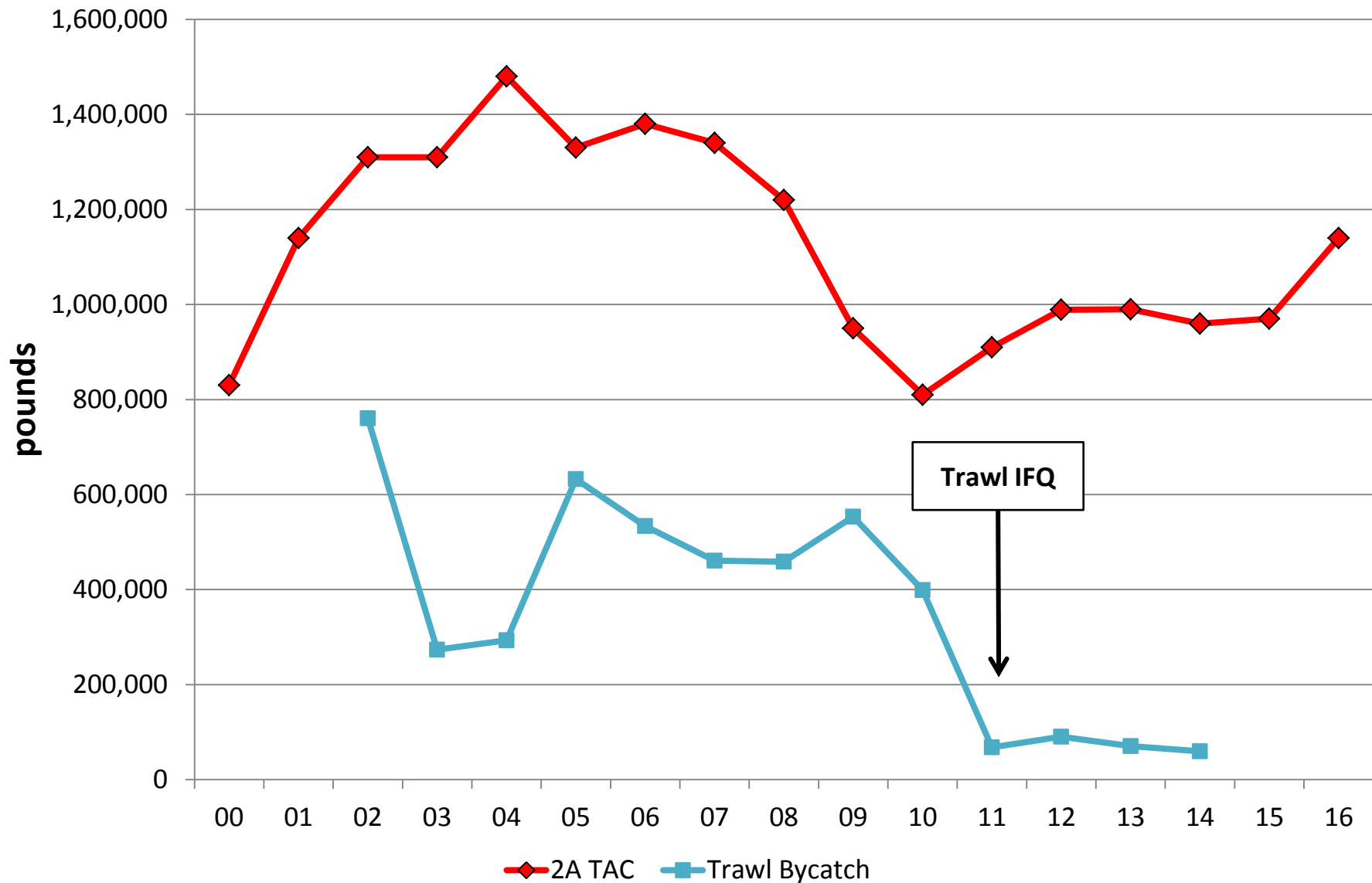
- **2A Other Removals = Fisheries Bycatch/Discard**

PFMC Trawl Individual Quota Program

- **Implemented January 2011**
- **Includes Individual Quotas for Most Trawl Species and Halibut Bycatch Quota**
 - **All Halibut Mortality Counts Against Quota**
- **100% At-Sea Observer Coverage and 100% Dockside Monitoring**
 - **Size and Disposition of Discarded Fish**

**Halibut Bycatch Mortality Reduced by 85%
Compared to Pre-IFQ (2010)**

2A TAC and Trawl Bycatch



2A Halibut Catch Sharing

2A TAC 1,140,000

Tribal Total 399,000

Tribal C&S 33,900
 Tribal Commercial 365,100

Non-Tribal Total 741,000

Commercial 227,487

Directed 193,364
 Salmon Troll (Incid.) 34,123
 Sablefish (Incid.) 49,686

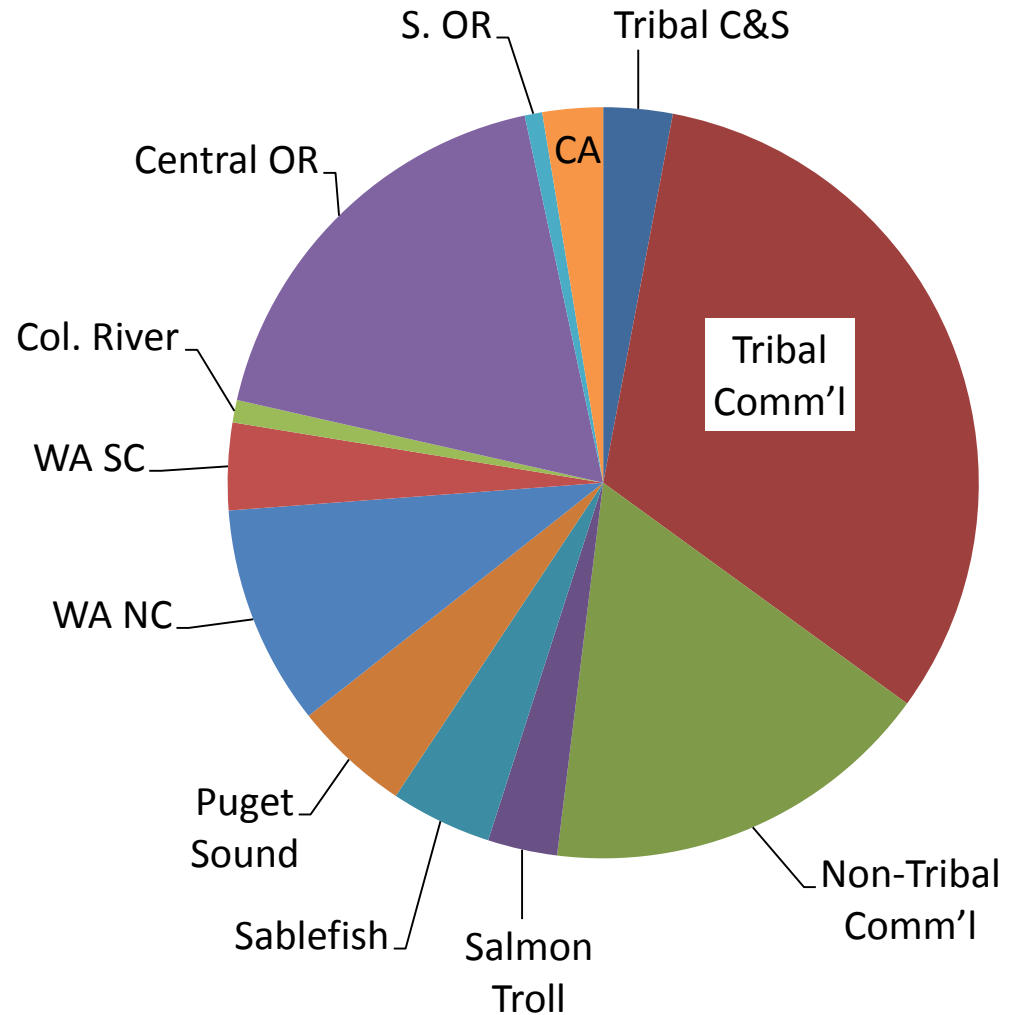
WA Sport 214,110

Puget Sound 57,393
 North Coast 108,030
 South Coast 42,739
 Columbia River 11,009

OR Sport 220,077

Central OR 206,410
 Southern OR 8,605

CA Sport 29,640



WDFW Management Efforts

- **Solicit Stakeholder Input on Regulations and Season Dates**
- **Monitor Catches Inseason**
 - **Recreational Catches by Subarea**
 - **Commercial Incidental Catches (Salmon and Sablefish)**
- **Enforce Regulations**
- **Coordinate Inseason Management Actions with IPHC, NMFS, and Other States**
- **Communicate with IPHC, PFMC, NMFS, Tribes, and Stakeholders**

- Sample Marine Catch Areas for All Fisheries

- Interview Anglers at Access Sites

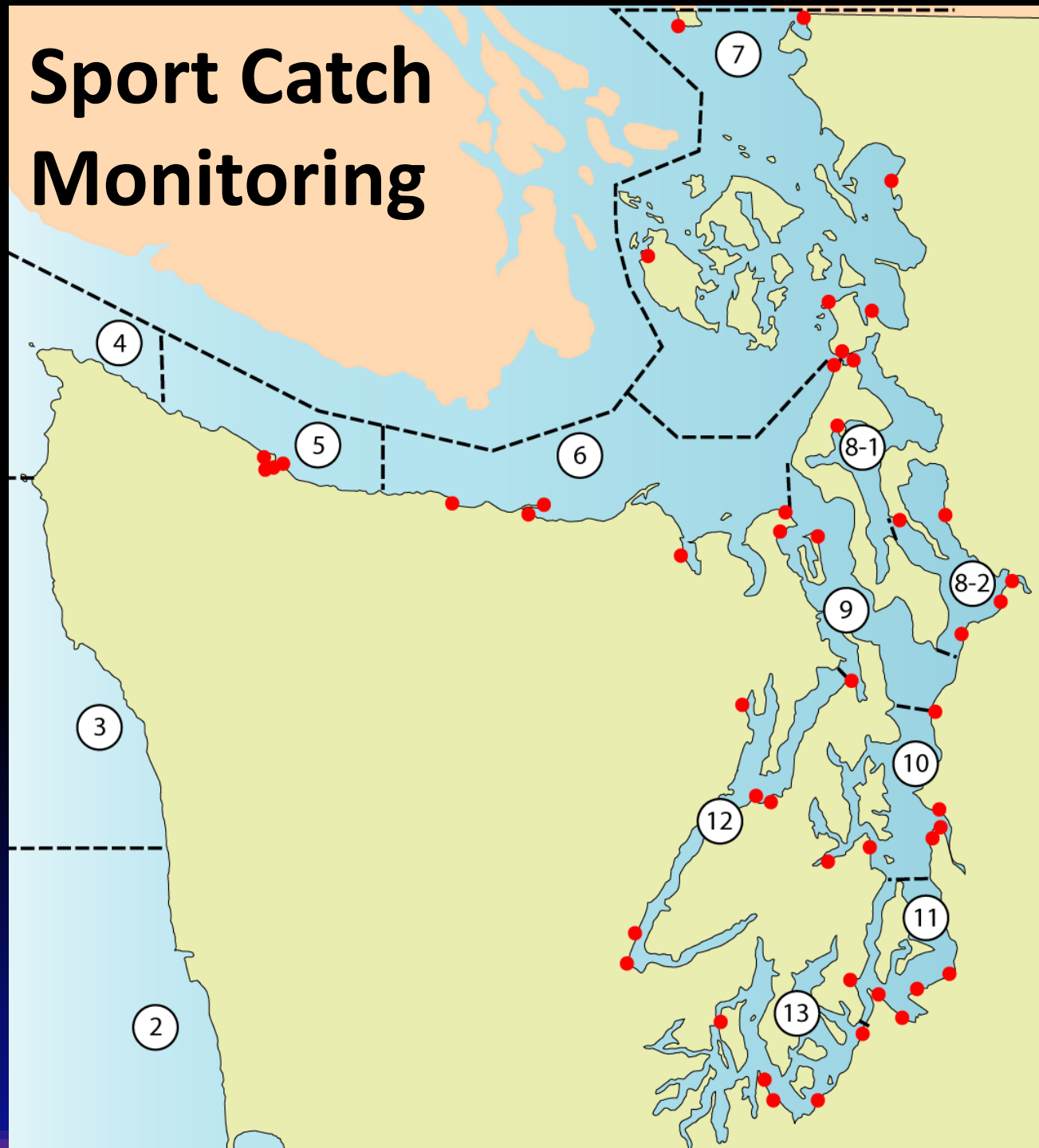
- Record Catch Data

- Collect Biological Data

- Coast: Quota-Managed Inseason

- PS: Set Seasons with Post-Season Estimates

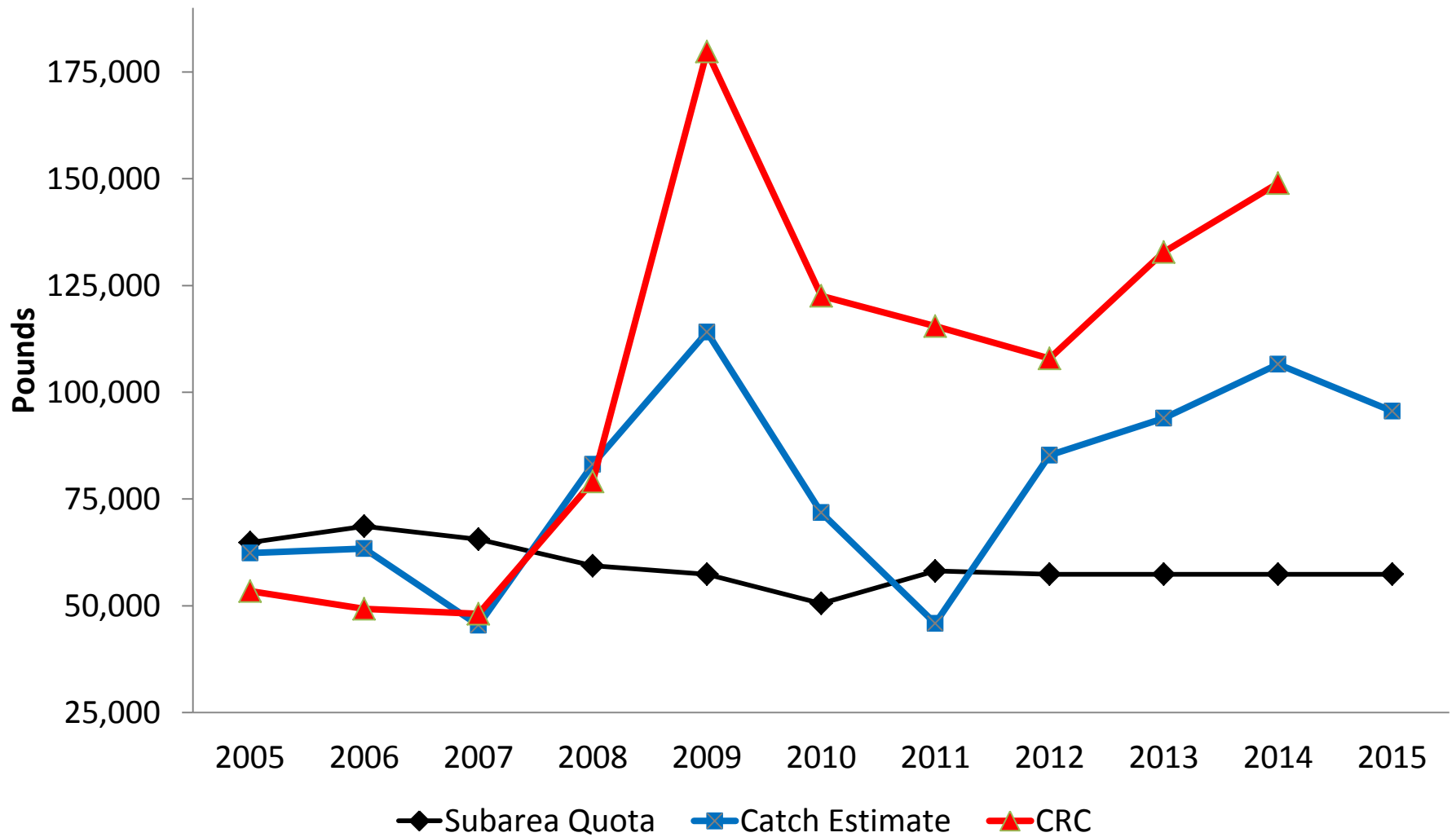
Sport Catch Monitoring



Puget Sound Catch Estimation Methods

- **Old Method:** Combination of Port Sampling (Catch—Numbers and Weight) and Phone Survey (Effort)
 - Calculate CPUE for 2-Month Wave by Catch Area
- **New Method (2015 and 2016):** Conducted Intensive Survey Effort to Generate CPUE
 - Improved Precision
 - Produce “Real-Time” Catch Estimates
- **Catch Record Cards:** Returned One Year After Season Ends; Useful for “Ground-truthing” Sampling Efforts

Puget Sound Quota and Catch



Management Issues and Next Steps

- **Allocation/Catch Sharing Issues**
 - CA Sport Fishery and Tribal Shares
 - PFMC Scoping Availability of Information
- **Washington Recreational Season Length**
 - Coastal Areas: 3-5 Days and Puget Sound: 8 Days
 - Developing Statewide Season (Advisory Meeting on Sept 1)
- **Puget Sound Catches Exceeding Quota**
 - Begin Inseason Quota Management in 2017
 - Include PSA CRC Proposal in WDFW Legislative Package

Questions?