

Agenda Item 8

Deer Areas

Elk Areas

Special Closures and Firearm Restriction Areas



Washington Department of
FISH and WILDLIFE

Jerry Nelson, Ph.D.

Deer and Elk Section Manager, Game Division
Wildlife Program

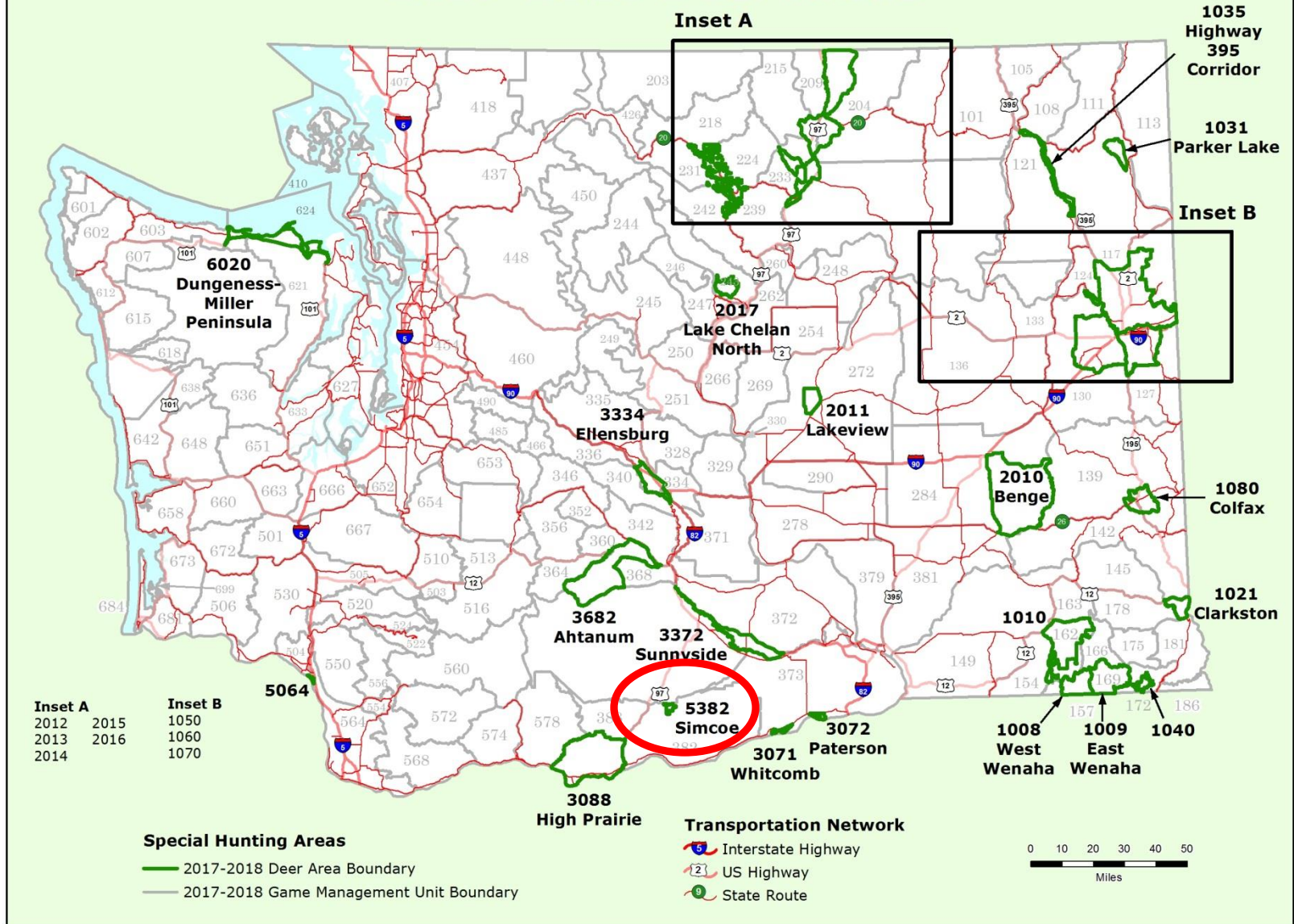
Deer Areas WAC 232-28-624

- Proposed new Deer Area in Klickitat County:
 - Deer Area 5382 Simcoe

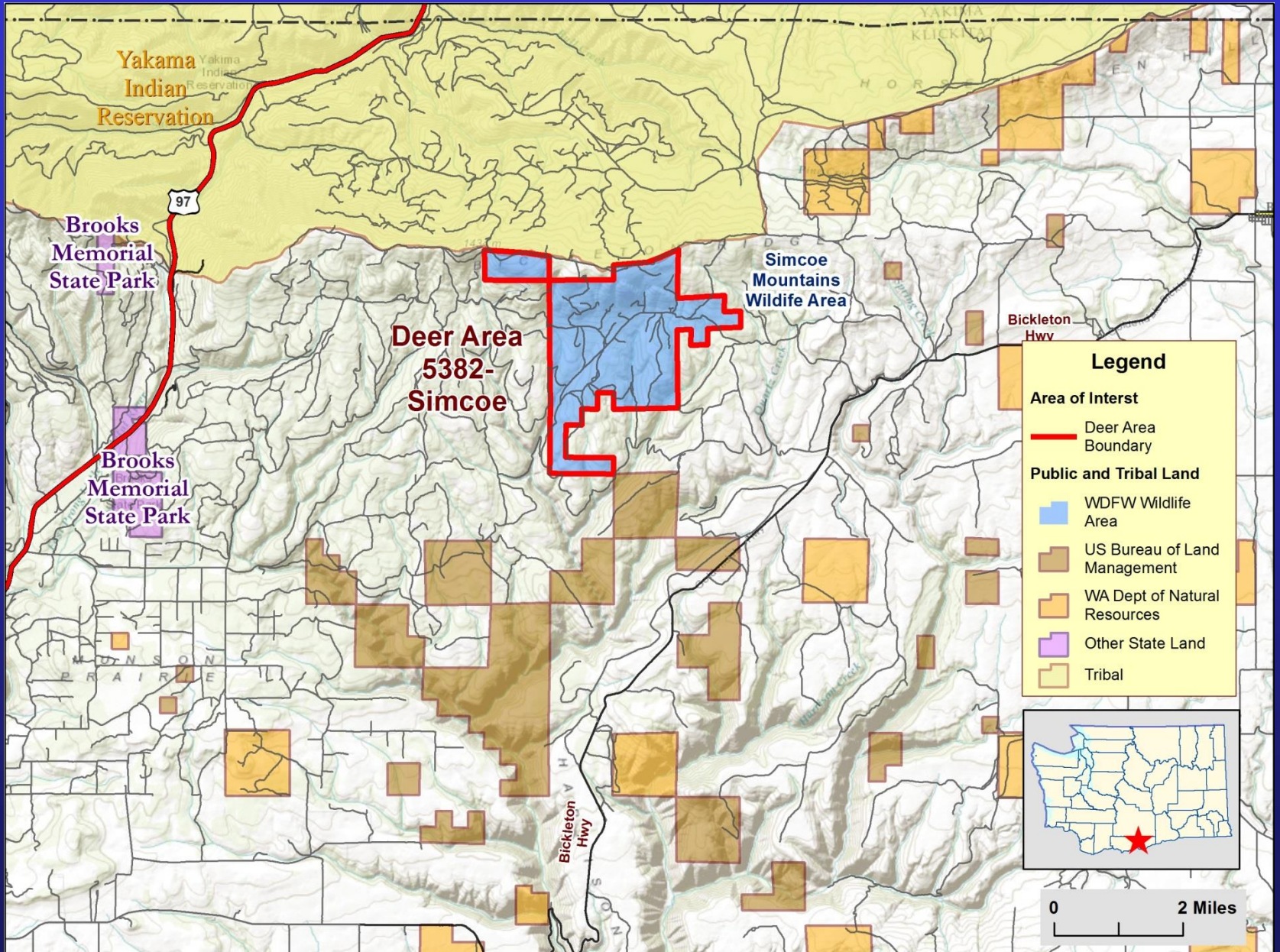




2017-2018 Deer Areas



Deer Area 5382



Direction and Rationale

- Deer Areas are designed to focus hunter effort on a smaller scale than the GMU.
- Proposed Deer Area is part of newly acquired Wildlife Area land (Simcoe Mountain Unit) on which previous owners had not allowed public access.
- Propose initiating public hunting on this Deer Area via special permit seasons.

Questions on WAC 232-28-624



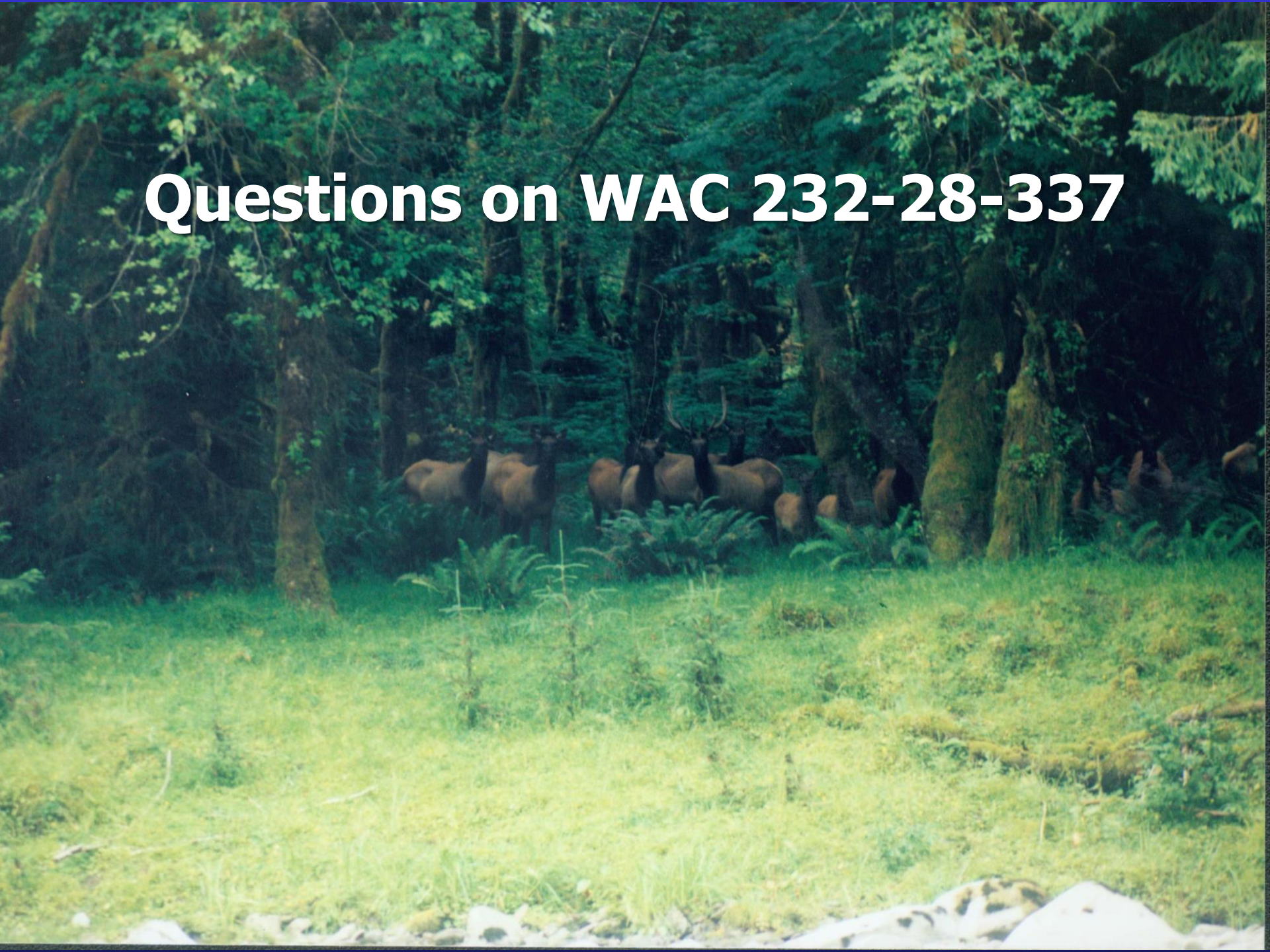
Elk Areas WAC 232-28-337

- Proposed removal of six Elk Areas in Grays Harbor, Mason, Clallam, and Jefferson Counties:
 - Elk Areas 6012, 6062, 6066, 6068, 6072, 6073

Direction and Rationale

- Elk Areas are designed to focus hunter effort on a smaller scale than the GMU.
- These particular Elk Areas were designed to help mitigate agricultural damage.
- Proposed removals are Elk Areas that are no longer needed.

Questions on WAC 232-28-337



Special Closures and Firearm Restriction Areas

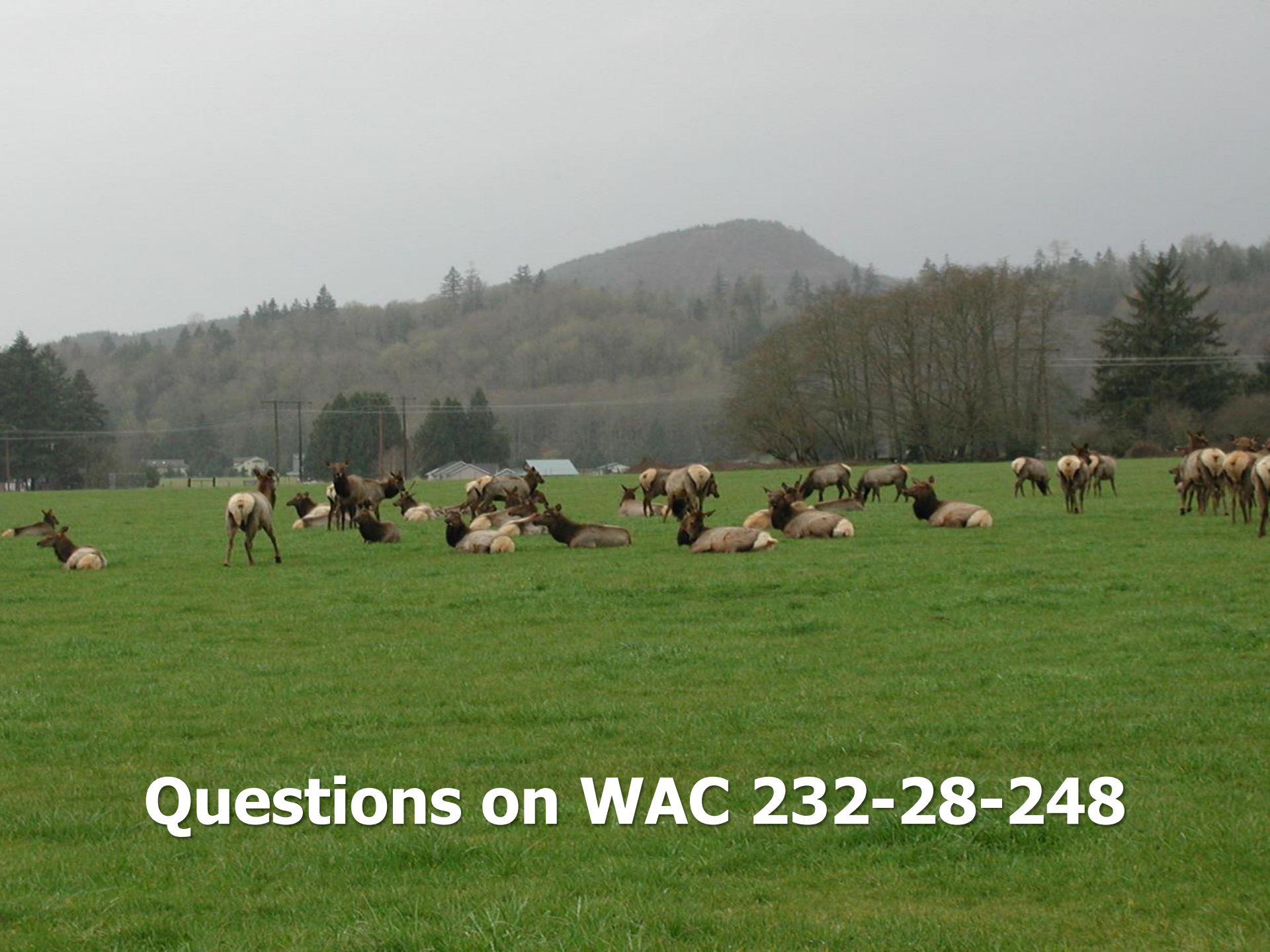
WAC 232-28-248

Proposed Changes

- Proposed adjustments are administrative changes that clarify road names and GMU names.
- Proposed boundary clarifications are in Clark, Cowlitz, and Grays Harbor Counties.

Direction and Rationale

- Firearm Restriction Areas maintain hunting as a management tool while taking into account safety and effectiveness.
- The proposal clarifies boundary language but does not, in effect, change the boundaries.



Questions on WAC 232-28-248