

**NORTHWEST
MARINE TRADE
ASSOCIATION**



HEWES
Craft™

Raider

RENAISSANCE
MARINE GROUP INC.

OSPREY
PILOTHOUSE

Thunder Jet

DUCKWORTH
Legendary Adventure

Skagit Orca

SeaSport

Weldcraft
MARINE INDUSTRIES INC.
DRIVING NEW IDEAS ON THE WATER.

Tom Cat

ASPEN
POWER CATAMARANS

NORTHWEST
BOATS

C·DORY

ESTABLISHED
1958
Ranger Tugs
QUALITY CRUISING

COLD WATER
BOATS



County of Purchaser and Source of Sales
Washington State
2nd. Quarter - 2016



County Name	2016												2015		2015 & 2016 Comparison					
	New Dealer		New Import		Used Dealer		Used Dealer Import		Used Private		Used Import		2nd Quarter Total		2nd Quarter Total		2nd Quarter Total			
	Units	\$	Units	\$	Units	\$	Units	\$	Units	\$	Units	\$	Units	\$	Units	\$	Units	% Change	\$	%Change
Clallam	4	\$534,552	2	\$122,298	6	\$253,400	1	\$0	37	\$601,990	7	\$337,014	57	\$1,849,254	264	\$1,656,704	-207	-78.4%	\$192,550	11.6%
Clark	2	\$875,211	11	\$2,919,937		\$328,024		\$38,246	44	\$1,825,349	30	\$2,877,757	87	\$8,864,524	1011	\$7,911,160	-924	-91.4%	\$953,363	12.1%
Cowlitz	63	\$323,053	21	\$530,808	36	\$33,962	8	\$0	364	\$718,263	122	\$476,204	614	\$2,082,290	342	\$2,043,915	272	79.5%	\$38,375	1.9%
Grays Harbor	65	\$495,968	9	\$6,070	13	\$19,400	4	\$17,679	225	\$262,160	46	\$99,401	362	\$900,678	208	\$1,311,854	154	74.0%	-\$411,176	-31.3%
Island	14	\$1,074,055	5	\$157,922	5	\$393,037		\$42,549	200	\$976,223	45	\$647,356	269	\$3,291,142	427	\$5,433,240	-158	-37.0%	-\$2,142,098	-39.4%
Jefferson	51	\$520,253	81	\$50,341	14	\$432,690	3	\$87,000	445	\$773,715	369	\$366,764	963	\$2,230,763	195	\$2,034,268	768	393.8%	\$196,495	9.7%
King		\$33,718,109		\$3,431,040	2	\$16,328,838		\$11,328,634	6	\$15,074,423	1	\$11,744,065	9	\$91,625,108	3184	\$83,905,963	-3,175	-99.7%	\$7,719,145	9.2%
Kitsap	10	\$2,396,124	19	\$958,551	2	\$1,553,341		\$268,525	236	\$2,495,490	108	\$898,370	375	\$8,570,400	835	\$9,454,442	-460	-55.1%	-\$884,042	-9.4%
Lewis	25	\$302,983	2	\$166,786	15	\$70,145	1	\$10,000	85	\$452,610	20	\$197,759	148	\$1,200,283	265	\$1,155,975	-117	-44.2%	\$44,308	3.8%
Mason	2	\$707,019	1	\$205,975		\$173,329		\$17,995	26	\$904,190	4	\$220,600	33	\$2,229,108	326	\$3,562,592	-293	-89.9%	-\$1,333,484	-37.4%
Pacific	34	\$53,030	8	\$213,149	16	\$0	8	\$0	131	\$117,735	25	\$58,500	222	\$442,414	67	\$316,220	155	231.3%	\$126,194	39.9%
Pierce		\$6,480,555	1	\$551,882		\$4,689,839		\$801,095	6	\$5,399,687	2	\$3,974,155	9	\$21,897,213	1900	\$21,955,668	-1,891	-99.5%	-\$58,455	-0.3%
San Juan	29	\$2,568,704	13	\$904,589	25	\$1,225,000	3	\$997,614	273	\$759,106	58	\$3,938,262	401	\$10,393,275	173	\$10,393,257	228	131.8%	\$18	0.0%
Skagit	17	\$5,410,467	2	\$134,274	11	\$4,857,770	2	\$1,741,883	138	\$3,919,750	24	\$2,989,919	194	\$19,054,063	650	\$16,278,753	-456	-70.2%	\$2,775,310	17.0%
Skamania	38	\$12,000	5	\$88,406	21	\$0	3	\$0	245	\$37,191	60	\$41,510	372	\$179,107	37	\$217,157	335	905.4%	-\$38,050	-17.5%
Snohomish	10	\$7,869,412	6	\$379,024	9	\$2,857,348	1	\$586,423	127	\$3,875,437	28	\$1,218,901	181	\$16,786,546	1807	\$16,084,343	-1,626	-90.0%	\$702,203	4.4%
Thurston	521	\$2,137,464	96	\$293,552	329	\$731,766	62	\$125,649	1703	\$1,781,910	357	\$1,484,098	3,068	\$6,554,440	628	\$6,325,442	2,440	388.5%	\$228,998	3.6%
Wahkiakum	72	\$0	14	\$123,133	52	\$0	8	\$0	513	\$83,597	94	\$42,950	753	\$249,680	30	\$126,655	723	2410.0%	\$123,025	97.1%
Whatcom	14	\$722,482	8	\$2,626,352	7	\$1,402,175	3	\$382,475	96	\$2,653,314	14	\$2,925,635	142	\$10,712,432	622	\$8,316,145	-480	-77.2%	\$2,396,287	28.8%
Western WA Total	971	\$66,201,441	304	\$13,864,088	563	\$35,350,064	107	\$16,445,767	4900	\$42,712,140	1414	\$34,539,219	8259	\$209,112,719	12971	\$198,483,754	-4712	-36.3%	\$10,628,965	5.4%
Adams	1	\$113,074	3	\$1,398		\$63,350		\$45,605	32	\$50,293	33	\$30,400	69	\$304,120	59	\$397,927	10	16.9%	-\$93,807	-23.6%
Asotin	11	\$541,329	6	\$301,878	7	\$0	1	\$0	176	\$421,586	39	\$182,439	240	\$1,447,232	87	\$903,359	153	175.9%	\$543,873	60.2%
Benton	2	\$2,447,848	6	\$924,378	3	\$594,036	3	\$116,998	50	\$1,566,828	11	\$1,020,667	75	\$6,670,755	573	\$5,366,276	-498	-86.9%	\$1,304,479	24.3%
Chelan	34	\$1,822,020	9	\$245,287	17	\$222,687	1	\$56,750	232	\$964,986	34	\$476,661	327	\$3,788,391	380	\$4,227,981	-53	-13.9%	-\$439,591	-10.4%
Columbia	15	\$0	4	\$0	4	\$16,100	1	\$0	77	\$5,650	15	\$2,000	116	\$23,750	18	\$88,195	98	544.4%	-\$64,445	-73.1%
Douglas	2	\$458,516	7	\$83,490		\$186,793		\$12,000	37	\$398,107	21	\$147,089	67	\$1,285,995	177	\$1,483,138	-110	-62.1%	-\$197,143	-13.3%
Ferry	4	\$28,149	15	\$23,374	1	\$0	1	\$0	59	\$79,100	35	\$27,500	115	\$158,123	45	\$50,835	70	155.6%	\$107,288	211.1%
Franklin	225	\$656,606	33	\$271,791	163	\$297,177	24	\$160,294	1266	\$573,369	188	\$151,500	1,899	\$2,110,737	232	\$1,910,128	1,667	718.5%	\$200,609	10.5%
Garfield	18	\$0	6	\$1,999	11	\$0	8	\$0	92	\$50,850	29	\$1,800	164	\$54,649	6	\$43,840	158	2633.3%	\$10,809	24.7%
Grant	50	\$946,476	17	\$382,615	74	\$286,765	23	\$47,577	352	\$797,290	87	\$487,505	603	\$2,948,229	416	\$3,144,657	187	45.0%	-\$196,428	-6.2%
Kittitas	1	\$332,444	3	\$266,069		\$142,183		\$21,350	14	\$369,877	13	\$158,820	31	\$1,290,743	142	\$1,063,087	-111	-78.2%	\$227,656	21.4%
Klickitat	220	\$6,961	18	\$14,555	124	\$0	21	\$0	1179	\$47,927	158	\$124,820	1,720	\$194,263	66	\$363,907	1,654	2506.1%	-\$169,644	-46.6%
Lincoln	130	\$81,400	62	\$454,686	47	\$75,890	28	\$139,800	898	\$351,359	405	\$45,550	1,570	\$1,148,685	103	\$1,857,911	1,467	1424.3%	-\$709,226	-38.2%
Okanogan	11	\$475,372	13	\$74,860	5	\$68,569		\$12,190	165	\$212,540	60	\$80,450	254	\$923,980	150	\$891,846	104	69.3%	\$32,134	3.6%
Pend Oreille	81	\$42,140	10	\$485,877	43	\$15,700	7	\$5,000	453	\$176,975	74	\$154,738	668	\$880,430	112	\$772,314	556	496.4%	\$108,117	14.0%
Spokane		\$2,506,253	3	\$2,581,685		\$622,050		\$445,830	24	\$3,086,707	5	\$2,508,468	32	\$11,750,993	1582	\$12,178,690	-1,550	-98.0%	-\$427,698	-3.5%
Stevens	10	\$324,816	1	\$413,951	4	\$24,725		\$0	60	\$750,879	27	\$402,438	102	\$1,916,809	278	\$1,767,910	-176	-63.3%	\$148,899	8.4%
Walla Walla	36	\$351,500	29	\$121,650	52	\$26,778	10	\$0	413	\$211,842	99	\$68,705	639	\$780,475	91	\$640,791	548	602.2%	\$139,684	21.8%
Whitman	5	\$56,189	3	\$57,237	2	\$10,000	1	\$10,975	49	\$180,404	29	\$80,452	89	\$395,257	79	\$450,019	10	12.7%	-\$54,762	-12.2%
Yakima	28	\$921,855	3	\$136,599	19	\$228,537	3	\$50,775	340	\$749,583	51	\$360,881	444	\$2,448,230	494	\$3,270,058	-50	-10.1%	-\$821,828	-25.1%
Eastern WA Total	884	\$12,112,947.55	251	\$6,843,379	576	\$2,881,340	132	\$1,125,144	5968	\$11,046,152	1413	\$6,512,883	9,224	\$40,521,845	5090	\$40,872,869	4134	81.2%	-\$351,024	-0.9%
Unknown			1	\$87,990					27	\$185,150	3	\$18,800	31	\$271,940	14	\$253,745	17	121.4%	\$18,195	7.2%
State Total	1855	\$78,314,388.45	556	\$20,795,457	1139	\$38,231,404	239	\$17,570,911	10895	\$53,923,442	2830	\$41,070,902	17,514	\$249,906,504	18,075	\$239,610,368	-561	-3.1%	\$10,296,137	4.3%

Source: Washington Department of Licensing and Washington Sea Grant Program

**Washington State Boat Sales New and Used Registered in Washington State
All Lengths - Units
2003-2016**

New Boat Sales in Washington

	2003	2004	2005	2006	2007	2008	2009	2010	2011	2012	2013	2014	2015	2016
Q1	1,368	1,526	1,592	1,526	1,400	1,191	625	663	539	605	602	715	857	975
Q2	3,224	3,902	3,946	3,892	4,322	2,525	1,838	1,148	1,138	1,322	1,445	1,933	2,311	2,411
Q3	3,604	3,729	3,954	4,029	3,514	2,143	1,766	1,120	1,100	1,041	1,391	1,584	2,165	1,886
Q4	832	934	836	784	660	434	394	265	273	357	371	539	418	481
Total	9,028	10,091	10,328	10,231	9,896	6,293	4,623	3,196	3,050	3,325	3,809	4,771	5,751	5,753

Used Boat Sales in Washington

	2003	2004	2005	2006	2007	2008	2009	2010	2011	2012	2013	2014	2015	2016
Q1	6,027	6,371	6,367	6,058	5,974	4946	4,381	5,694	4,980	4,599	5,460	5,221	6,257	5,905
Q2	15,657	16,413	15,750	16,826	18,056	11347	13,463	12,072	11,488	11,986	13,981	14,544	15,673	15,103
Q3	17,077	16,238	16,677	16,893	14,140	12,292	14,291	13,603	13,533	12,830	15,332	15,534	14,660	14,043
Q4	5,323	5,204	5,042	5,110	4,347	3,188	4,390	4,390	3,926	4,329	3,861	5,338	3,891	4,006
Total	44,084	44,226	43,836	44,887	42,517	31,773	36,525	35,759	33,927	33,744	38,634	40,637	40,481	39,057

**New and Used Boat Sales in Washington
Annual Totals with % change year over year**

	New	% Chg.	Used	% Chg.	Total	% Chg.
2003	9,028		44,084		53,112	
2004	10,091	11.8%	44,226	0.3%	54,317	2.3%
2005	10,328	2.3%	43,836	-0.9%	54,164	-0.3%
2006	10,231	-0.9%	44,887	2.4%	55,118	1.8%
2007	9,896	-3.3%	42,517	-5.3%	52,413	-4.9%
2008	6,293	-36.4%	31,773	-25.3%	38,066	-27.4%
2009	4,623	-26.5%	36,525	15.0%	41,148	-21.5%
2010	3,196	-30.9%	35,759	-2.1%	38,955	-5.3%
2011	3,050	-4.6%	33,927	-5.1%	36,977	-5.1%
2012	3,325	9.0%	33,744	-0.5%	37,069	0.2%
2013	3,809	14.6%	38,634	14.5%	42,443	14.5%
2014	4,771	25.3%	40,637	5.2%	45,408	7.0%
2015	5,751	20.5%	40,481	-0.4%	46,232	1.8%
2016	5,753	0.0%	39,057	-3.5%	44,810	-3.1%

Source:

Washington State Department
of Licensing, Washington State
Sea Grant and the Northwest
Marine Trade Association

Prepared by:

Michael Campbell - Nov 22, 2010

Updated by:

George Harris - Jan 15, 2017

New and Used Boat Sales in Washington
Annual Totals with % change year over year

		New	% Chg.	Used	% Chg.	Total	% Chg.
2003		9,028		44,084		53,112	
2004		10,091	11.8%	44,226	0.3%	54,317	2.3%
2005		10,328	2.3%	43,836	-0.9%	54,164	-0.3%
2006		10,231	-0.9%	44,887	2.4%	55,118	1.8%
2007		9,896	-3.3%	42,517	-5.3%	52,413	-4.9%
2008		6,293	-36.4%	31,773	-25.3%	38,066	-27.4%
2009		4,623	-26.5%	36,525	15.0%	41,148	-21.5%
2010		3,196	-30.9%	35,759	-2.1%	38,955	-5.3%
2011		3,050	-4.6%	33,927	-5.1%	36,977	-5.1%
2012		3,325	9.0%	33,744	-0.5%	37,069	0.2%
2013		3,809	14.6%	38,634	14.5%	42,443	14.5%
2014		4,771	25.3%	40,637	5.2%	45,408	7.0%
2015		5,751	20.5%	40,481	-0.4%	46,232	1.8%
2016		5,753	0.0%	39,057	-3.5%	44,810	-3.1%

SOUNDINGS[®] Trade Only Today

DAILY NEWS FOR MARINE INDUSTRY PROFESSIONALS

FEBRUARY 8, 2017

SUBSCRIBE NOW

CUSTOMER SERVICE

Search...

[HOME](#) [INDUSTRY NEWS](#) [MANUFACTURERS](#) [DEALERS](#) [TECHNOLOGY](#) [BOAT SHOWS](#) [COLUMNS/BLOGS](#) [JOB BOARD](#) [CLASSIFIEDS](#)

[VIDEOS](#) [NEWSLETTER](#) [MARINE INDUSTRY CALENDAR](#)

[REGISTER](#)

[LOG IN](#)

[TradeOnlyToday](#) > [Industry News](#) > [New Boat Sales](#) > [Boat sales rose 5 percent in 2016](#)

Industry News

[ABYC](#)

[Access](#)

[Accidents](#)

Boat sales rose 5 percent in 2016

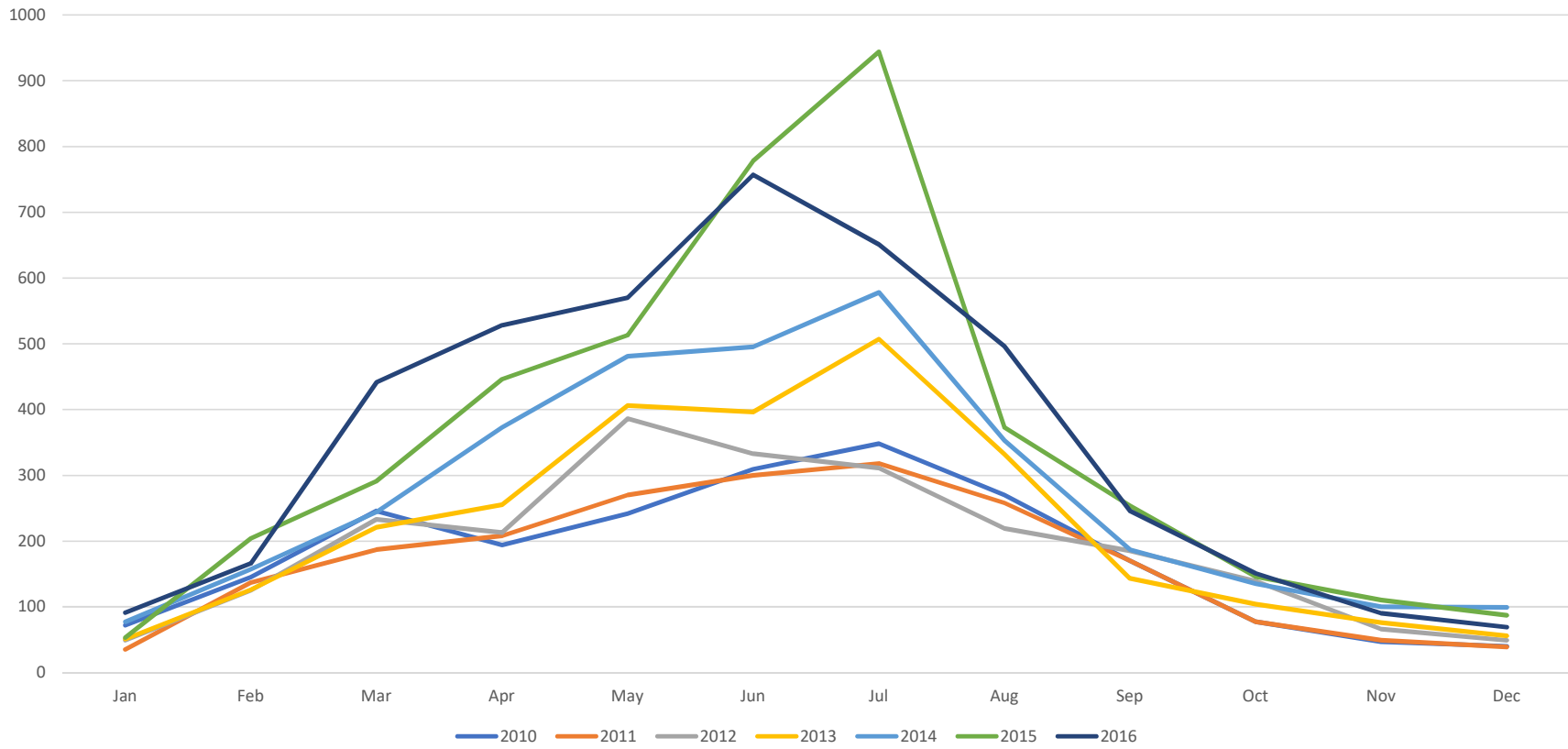
Posted on January 17th, 2017

Written by **Jack Atzinger**

 **LH-finance**
A DIVISION OF UNITED BANK



Washington State New Boat Sales
2010-2016
New Dealer - Units



	New Boats Not Sold in 2016		
	Quantity	Value	Total
	1000	\$42,350	\$42,349,867
Sales Tax on Boat (.08)			\$3,387,989
B&O Tax on Boat (.0048)			\$203,279
Sales tax on Accessories			\$846,997
Excise Tax (.005)			\$211,749
Lost Tax revenue			\$4,650,015