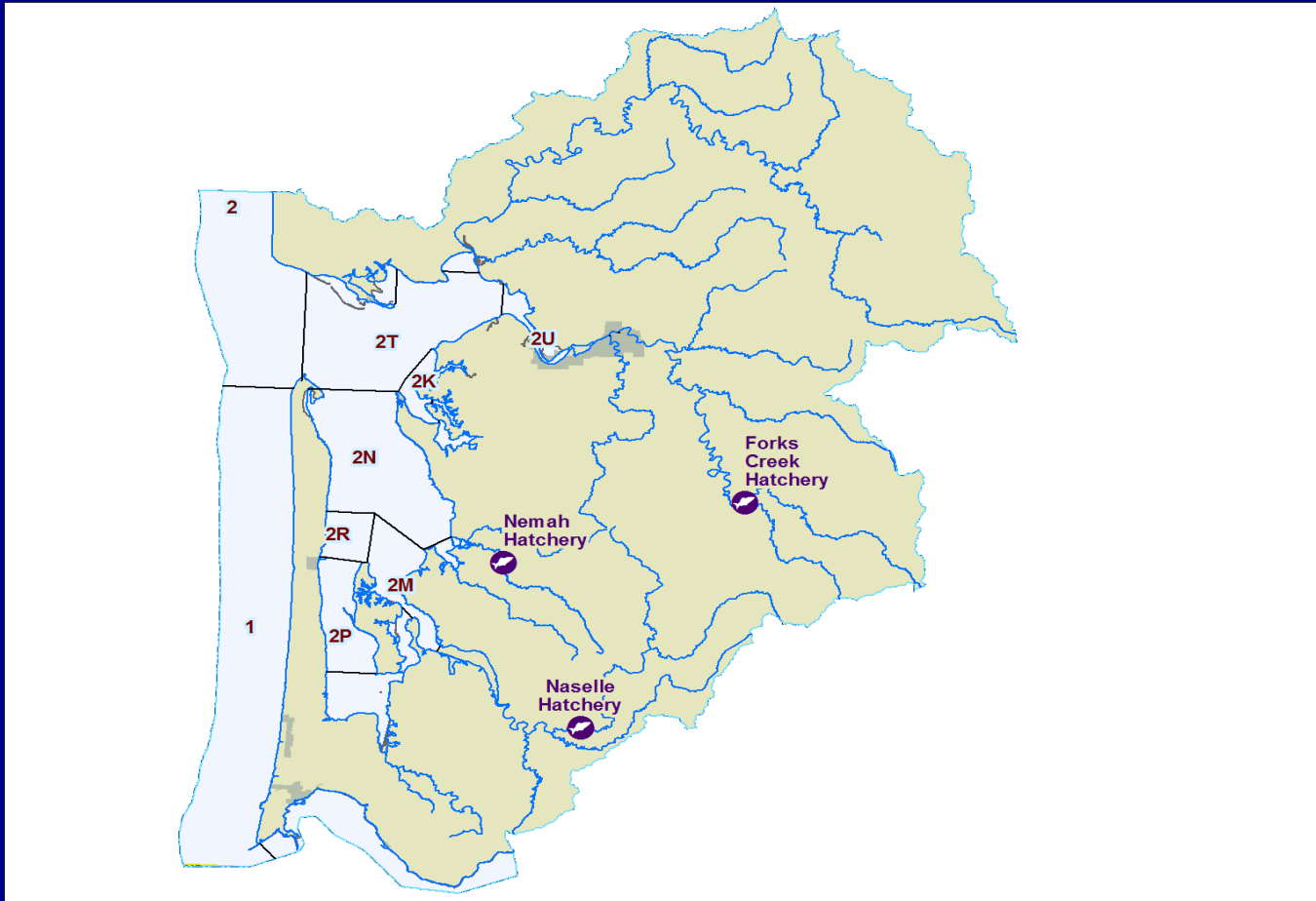


# Willapa Bay Salmon Management Policy 2017 Season Review



Annette Hoffmann & Chad Herring– Region 6 Fish Program  
Washington Fish and Wildlife Commission Meeting  
December 9, 2017

# Presentation Outline

---

- Review of Key Policy Elements
  - Enhance conservation focus
  - Reduce gear conflict
- Review of 2017 Planning
- Fishery Review
  - Recreational
  - Commercial
- Stock Assessment
- 2018 Implementation

# Review of Key Policy Elements

---

- **Implement Phase I: Chinook Rebuilding**
  - 20% harvest rate limit on Naselle and Willapa River stocks
- **Pursue Alternative Commercial Gears**
  - Additional mark selective fishery opportunities
  - 6% of commercial impacts
- **Prioritize Species Utilization by Sector**
  - Chinook recreational priority
  - Coho and Chum commercial priority

# Review of Key Policy Elements

---

## Chinook Fishery Management

- No commercial fisheries in areas 2T and 2U prior to September 16.
- No commercial fisheries in areas 2M, 2N, 2P and 2R until after Labor Day.

# Review of 2017 Planning

---

- Constraining stocks
  - Chinook
    - Rebuilding
    - 20% harvest rate on Naselle and Willapa stocks
  - Chum
    - 10% harvest rate
    - No commercial fisheries between October 15-31
- Alternative gear proposals
  - Floating pontoon fish trap

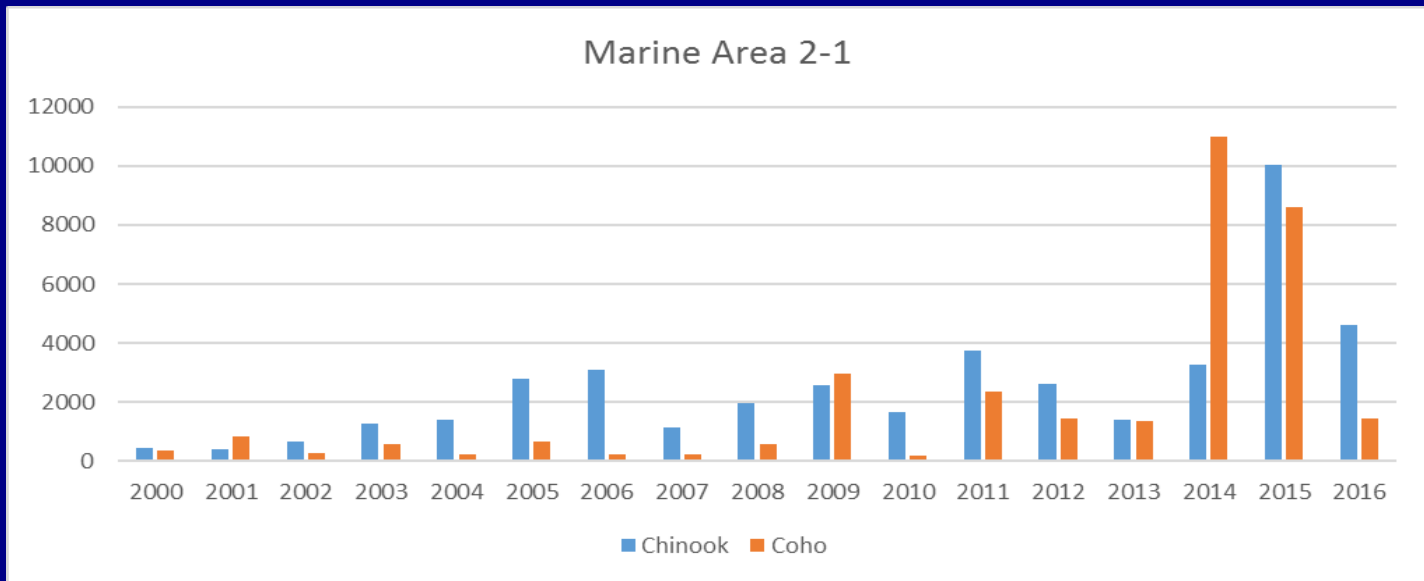
# Recreational Fishery Review

---

- Marine Area 2-1
  - Marine Area 2 rules
  - August 1<sup>st</sup> – January 31<sup>st</sup>
  - 3 adult daily limit, release wild Chinook
  - 2-pole endorsement
- Freshwater
  - August 1<sup>st</sup> – January 31<sup>st</sup>
  - 4 adult daily limit, release wild Chinook
  - 2-pole endorsement
  - November 1<sup>st</sup> only 2 wild Coho

# Recreational Marine Fishery Review

| Years          | Total Catch |       |
|----------------|-------------|-------|
|                | Chinook     | Coho  |
| 2011-2014 avg. | 2,760       | 4,039 |
| 2015           | 10,047      | 8,611 |
| 2016           | 4,626       | 1,428 |



# Recreational Marine Fishery Review

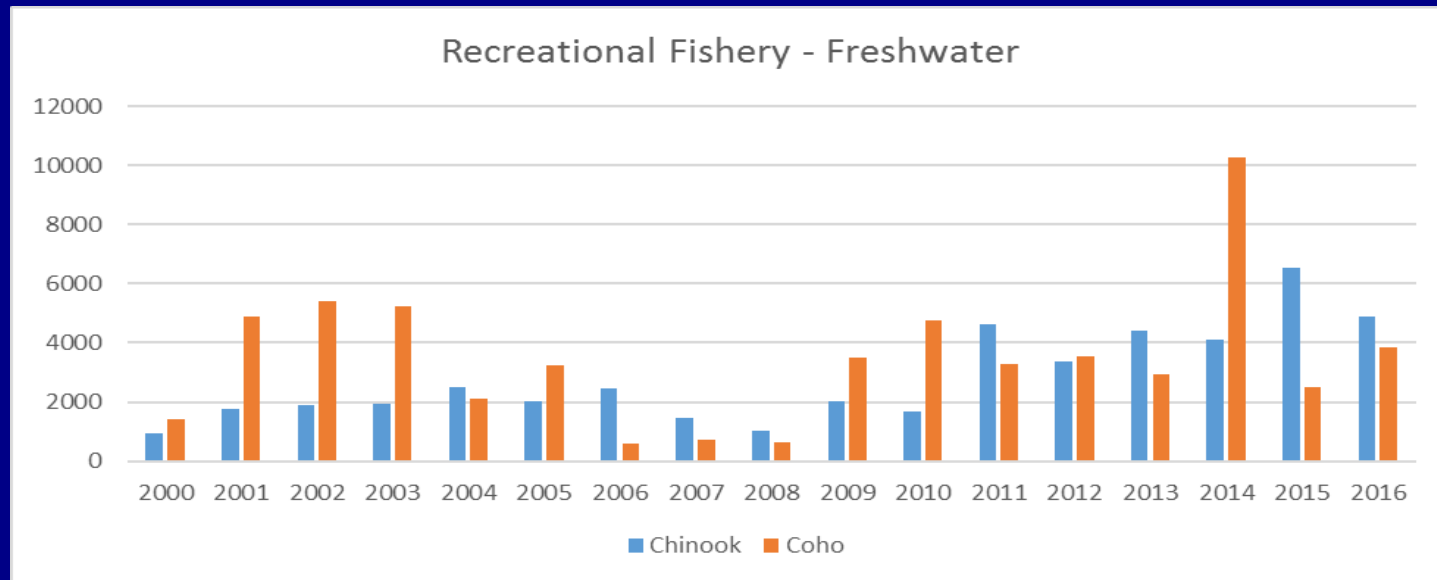
## Recreational Monitoring

| Year  | Total Number of Interviews | Total Anglers | Chinook           |                  |                  |                 | Coho              |                  |
|-------|----------------------------|---------------|-------------------|------------------|------------------|-----------------|-------------------|------------------|
|       |                            |               | Hatchery Retained | Natural Retained | Natural Released | Encounter Ratio | Hatchery Retained | Natural Retained |
| 2015  | 351                        | 848           | 385               | 1                | 151              | 0.3922          | 149               | 92               |
| 2016  | 1487                       | 3516          | 695               | 8                | 254              | 0.3655          | 163               | 54               |
| 2017  | 919                        | 2127          | 499               | 4                | 166              | 0.3327          | 60                | 37               |
| Total | 2757                       | 6491          | 1579              | 13               | 571              | 0.3616          | 372               | 183              |



# Recreational Freshwater Fishery Review

| Years          | Total Catch |       |
|----------------|-------------|-------|
|                | Chinook     | Coho  |
| 2011-2014 avg. | 4,116       | 5,017 |
| 2015           | 6,544       | 2,494 |
| 2016           | 4,887       | 3,845 |



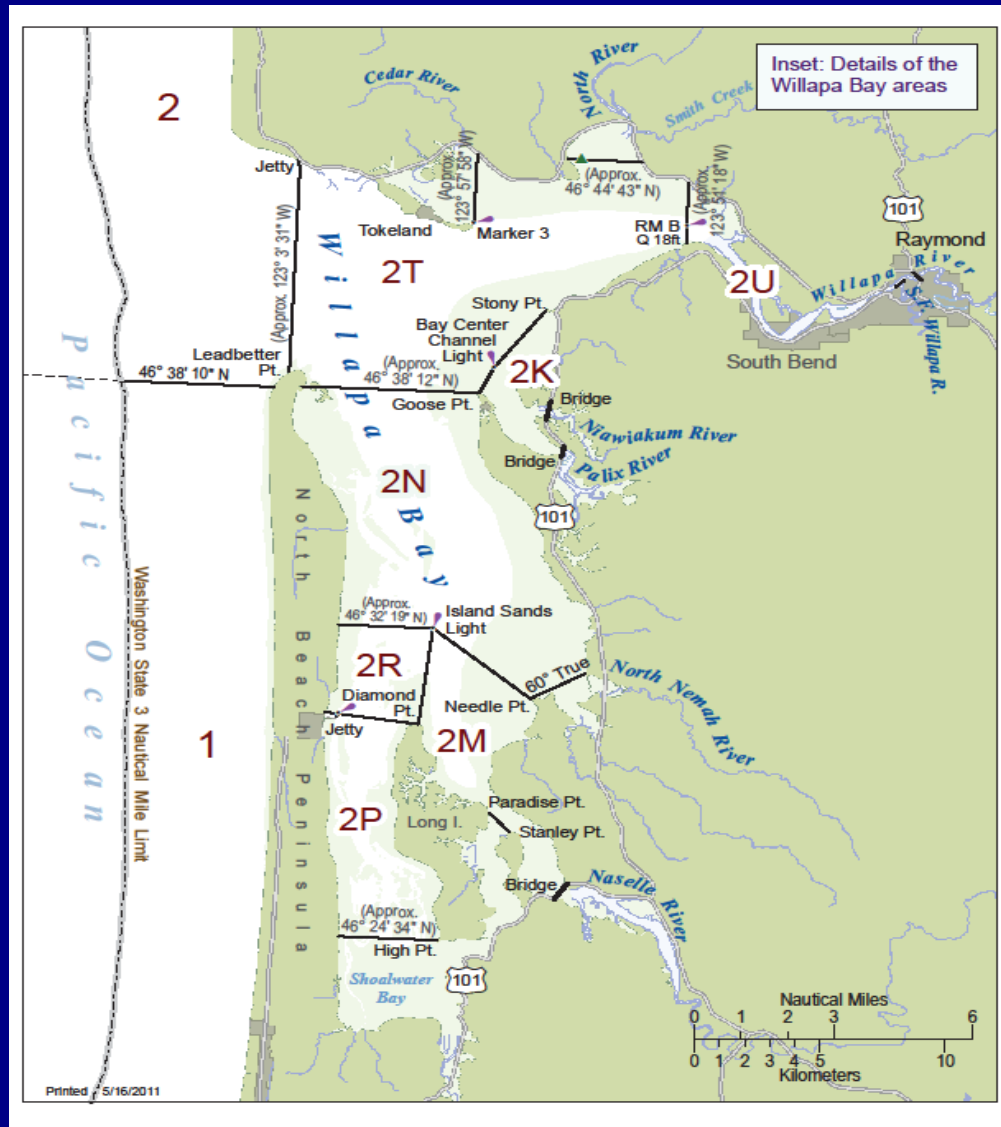
# Recreational Fishery Review

## Recreational Harvest Rates – Wild Chinook

| Year    | Predicted Pre-Season Harvest Rates |               |               |             |               |               | Actual Post-Season Harvest Rates |               |               |             |               |               |
|---------|------------------------------------|---------------|---------------|-------------|---------------|---------------|----------------------------------|---------------|---------------|-------------|---------------|---------------|
|         | Marine Area 2-1                    |               |               | Freshwater  |               |               | Marine Area 2-1                  |               |               | Freshwater  |               |               |
|         | Willapa Bay                        | Willapa River | Naselle River | Willapa Bay | Willapa River | Naselle River | Willapa Bay                      | Willapa River | Naselle River | Willapa Bay | Willapa River | Naselle River |
| 2015    | 0.021                              | 0.04          | 0.011         | 0.019       | 0.015         | 0.012         | 0.059                            | 0.100         | 0.044         | 0.043       | 0.048         | 0.022         |
| 2016    | 0.028                              | 0.056         | 0.007         | 0.02        | 0.021         | 0.013         | 0.075                            | 0.141         | 0.036         | 0.016       | 0.009         | 0.021         |
| 2017    | 0.041                              | 0.076         | 0.011         | 0.038       | 0.045         | 0.023         |                                  |               |               |             |               |               |
| Average | 0.030                              | 0.057         | 0.010         | 0.026       | 0.027         | 0.016         | 0.067                            | 0.120         | 0.040         | 0.029       | 0.029         | 0.021         |

- **Average total actual harvest rate by sub-basin**
  - **Willapa Bay 9.6%, Willapa River 14.9%, Naselle River 6.1%**

# Commercial Fishery Review



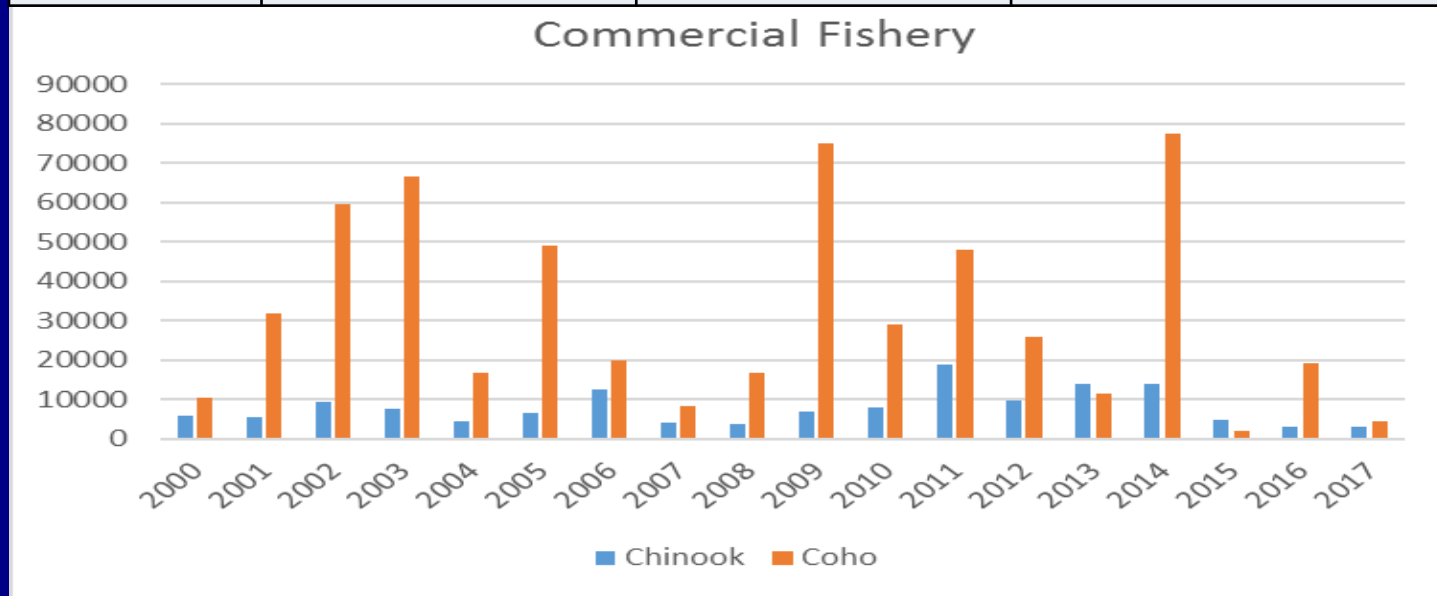
# Commercial Fishery Review

---

- South Bay – Areas 2N, 2R, and 2M
  - September 5<sup>th</sup> – October 13<sup>th</sup>
    - 22 12-hr openers
    - 7 tangle net openers
  - November
    - 22 24-hr openers
- North Bay – Areas 2T and 2U
  - September 18<sup>th</sup> – October 13<sup>th</sup>
    - 2U – 19 12-hr openers, all tangle net
    - 2T – 10 12-hr openers, 3 tangle net
  - November
    - 22 24-hr openers

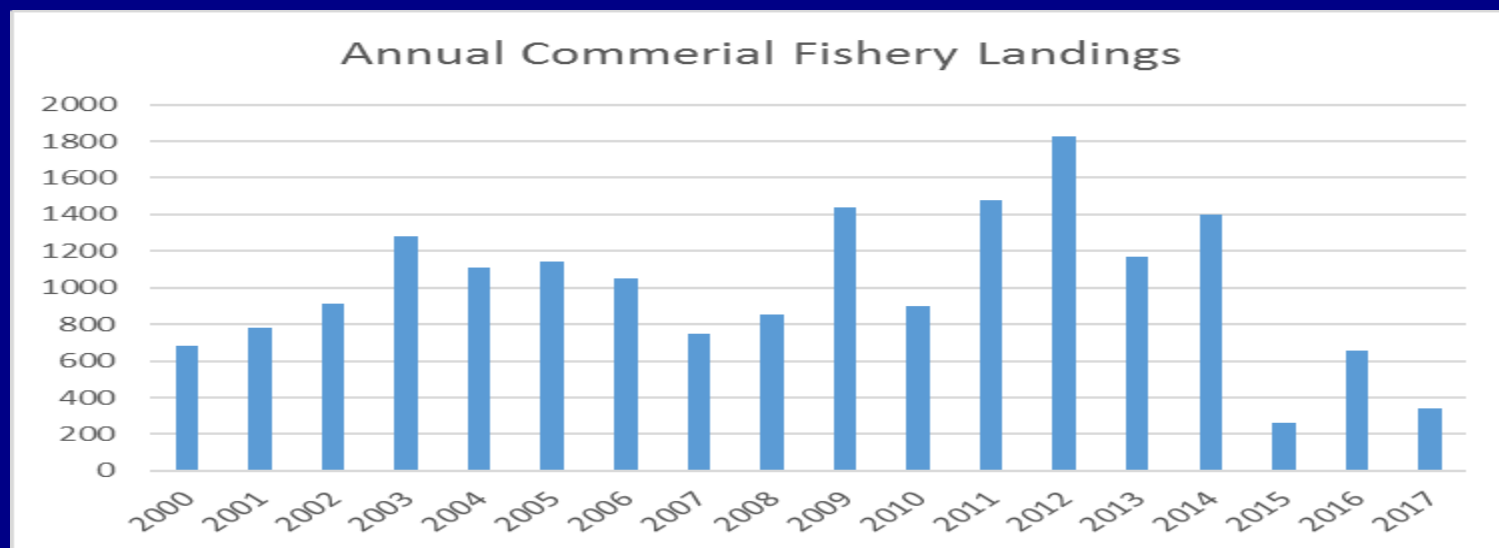
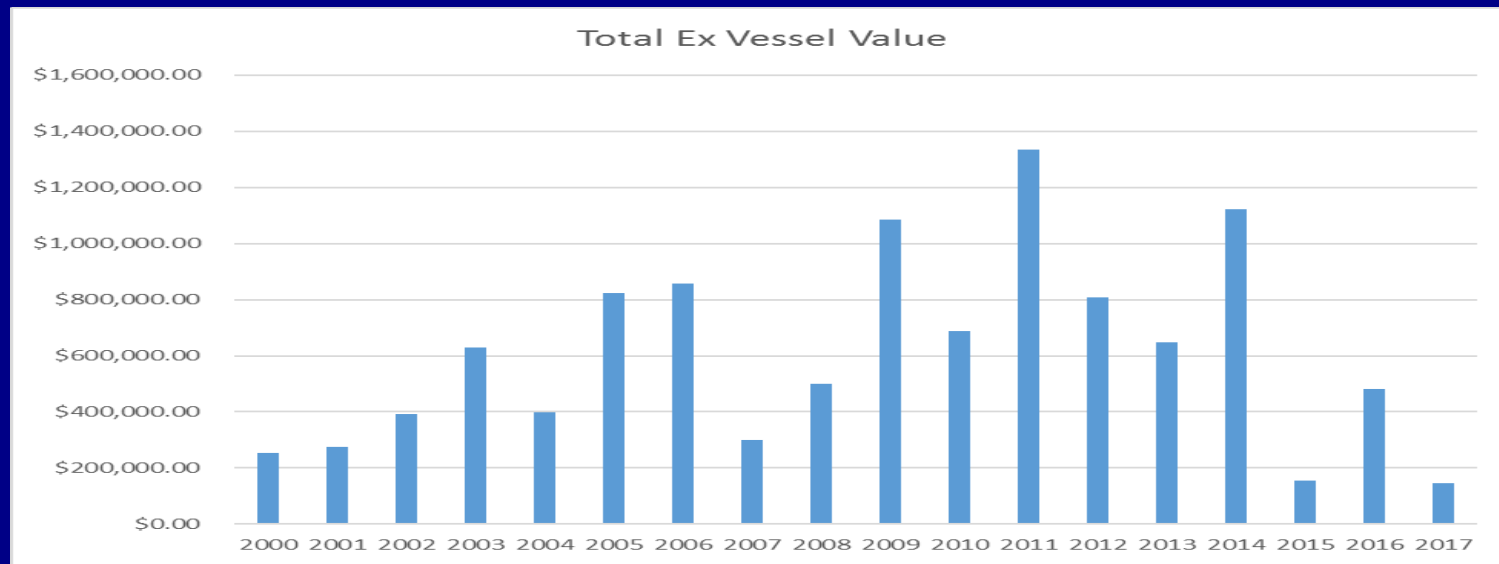
# Commercial Fishery Review

| Years             | Landed Catch |        |                  |
|-------------------|--------------|--------|------------------|
|                   | Chinook      | Coho   | Ex-Vessel Value* |
| 2011-2014<br>avg. | 13,990       | 40,698 | \$978,437        |
| 2015              | 4,737        | 1,922  | \$155,579        |
| 2016              | 3,144        | 19,304 | \$480,513        |
| 2017              | 2,946        | 4,575  | \$146,964        |



\* GDP adjusted to 3rd Quarter 2017

# Commercial Fishery Review



# Commercial Fishery Review

## Commercial Fishery Monitoring – Wild Chinook

| Total Impacts |             |               |               |             |               |               |
|---------------|-------------|---------------|---------------|-------------|---------------|---------------|
| Year          | Predicted   |               |               | Actual      |               |               |
|               | Willapa Bay | Willapa River | Naselle River | Willapa Bay | Willapa River | Naselle River |
| 2015          | 581         | 208           | 303           | 515         | 122           | 314           |
| 2016          | 493         | 169           | 281           | 298         | 97            | 173           |
| 2017          | 468         | 155           | 242           | 290         | 169           | 105           |

| Harvest Rate |             |               |               |             |               |               |
|--------------|-------------|---------------|---------------|-------------|---------------|---------------|
| Year         | Predicted   |               |               | Actual      |               |               |
|              | Willapa Bay | Willapa River | Naselle River | Willapa Bay | Willapa River | Naselle River |
| 2015         | 15.2        | 14.5          | 16.5          | 11.9        | 7.6           | 15.6          |
| 2016         | 15.1        | 11.8          | 17.3          | 12.3        | 9.2           | 18.8          |
| 2017         | 11.3        | 7.8           | 14.4          |             |               |               |

# Commercial Fishery Review

## Alternative Gear

| Year | Policy Objective |               | Pre-Season    |               | Actual        |               |
|------|------------------|---------------|---------------|---------------|---------------|---------------|
|      | Willapa River    | Naselle River | Willapa River | Naselle River | Willapa River | Naselle River |
| 2015 | 1.0%             | 1.0%          | 6.5%          | 1.1%          | 2.5%          | 0.4%          |
| 2016 | 2.0%             | 2.0%          | 6.8%          | 11.0%         | 2.7%          | 2.7%          |
| 2017 | 6.0%             | 6.0%          | 6.0%          | 11.9%         |               |               |

- Tangle net use
- Terminal areas
- Condition upon release



# Commercial Fishery Review

---

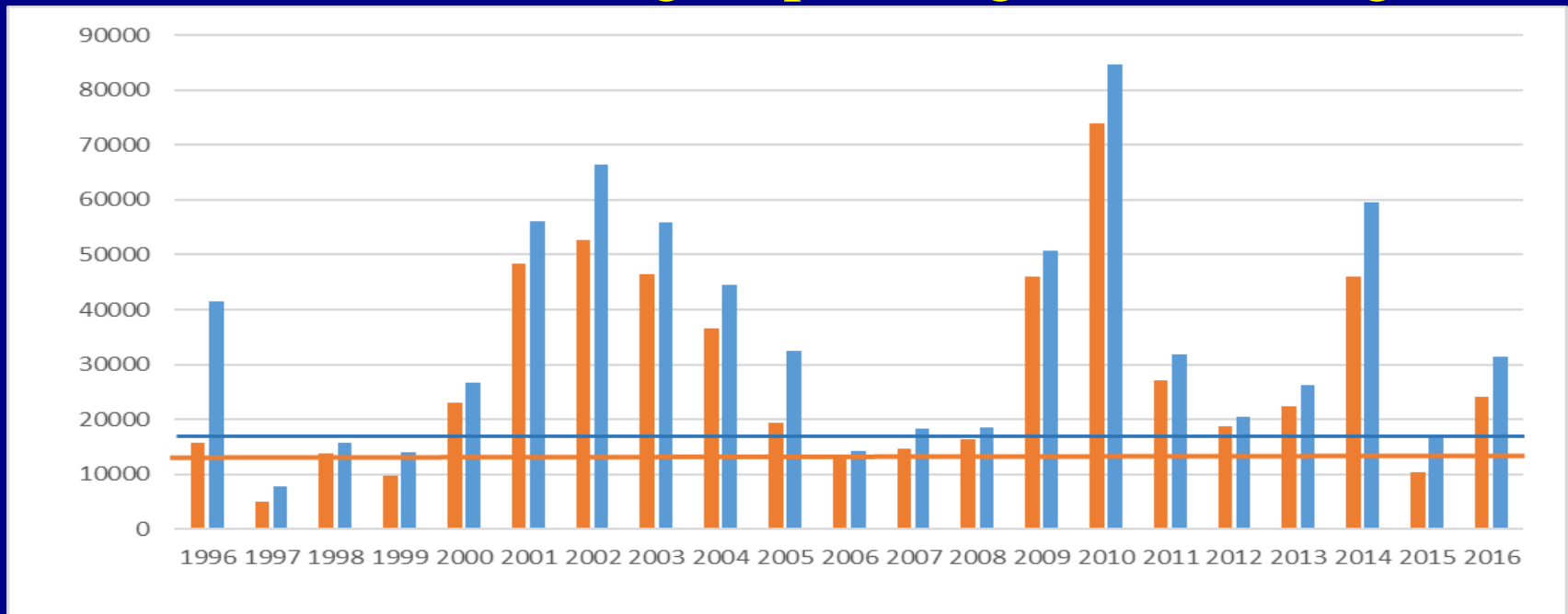
- Alternative Gear Proposals
  - Floating pontoon fish trap
    - Emerging Commercial Fishery
      - CR-101 filed April 19,2017
    - 3 stakeholder meetings
    - Public comment
      - Unlimited entry, time and place, ability to participate given timeframe, and faulty process
    - Withdrawn on June 14, 2017
    - Experimental Commercial Fishery
      - CR-101 filed June 14, 2017
    - 3 stakeholder meetings
    - Public comment similar to previous meetings

# Stock Assessment - Chinook

| Basin                 | North River/Smith Creek |           | Willapa River |            | Naselle River |            | Willapa Bay Basin |            |
|-----------------------|-------------------------|-----------|---------------|------------|---------------|------------|-------------------|------------|
| Pop. Des.             | Primary                 |           | Primary       |            | Contributing  |            | BASIN TOTAL       |            |
| Goal                  | 991                     |           | 1181          |            | 1547          |            | 4353              |            |
| Year                  | NOS                     | pHOS      | NOS           | pHOS       | NOS           | pHOS       | NOS               | pHOS       |
| 2010                  | 315                     | 0%        | 1873          | 69%        | 1971          | 82%        | 4418              | 76%        |
| 2011                  | 298                     | 0%        | 1473          | 70%        | 1415          | 87%        | 3331              | 81%        |
| 2012                  | 168                     | 0%        | 1191          | 66%        | 581           | 92%        | 2057              | 81%        |
| 2013                  | 113                     | 0%        | 481           | 77%        | 767           | 82%        | 1669              | 80%        |
| 2014                  | 99                      | 47%       | 784           | 74%        | 975           | 81%        | 1936              | 81%        |
| 2015                  | 173                     | 0%        | 1064          | 70%        | 483           | 68%        | 2043              | 73%        |
| 2016                  | 194                     | 0%        | 575           | 81%        | 597           | 75%        | 1581              | 74%        |
| <b>2017</b>           | <b>190</b>              | <b>0%</b> | <b>1668</b>   | <b>66%</b> | <b>1191</b>   | <b>24%</b> | <b>3392</b>       | <b>61%</b> |
| <b>2010-2016 Avg.</b> | <b>194</b>              | <b>7%</b> | <b>1063</b>   | <b>72%</b> | <b>970</b>    | <b>81%</b> | <b>2434</b>       | <b>78%</b> |

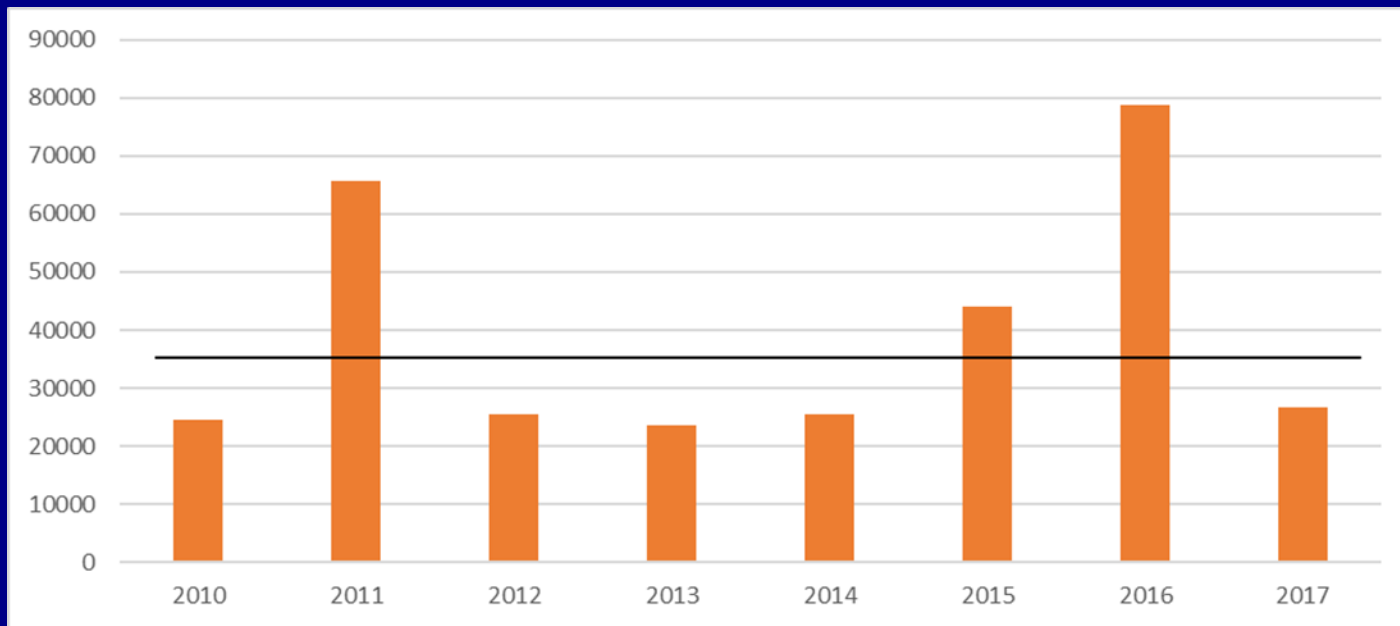
# Stock assessment - Coho

- PFMC Objective
  - 17,200 naturally spawning Coho (Blue line)
- WDFW Objective
  - 13,400 natural origin spawning Coho (Orange line)



# Stock assessment - Chum

- Spawner Escapement Objective  
– 35,400



# 2018 Policy Implementation

---

- **Constraining stocks**
  - Willapa River Fall Chinook – 20%
  - Naselle River Fall Chinook – 20%
  - Willapa Bay Chum – 10%
- **Continue to explore alternative gear**
  - Floating pontoon fish trap
- **Allocation of available impacts**

# Questions?