

# Agenda Item 6

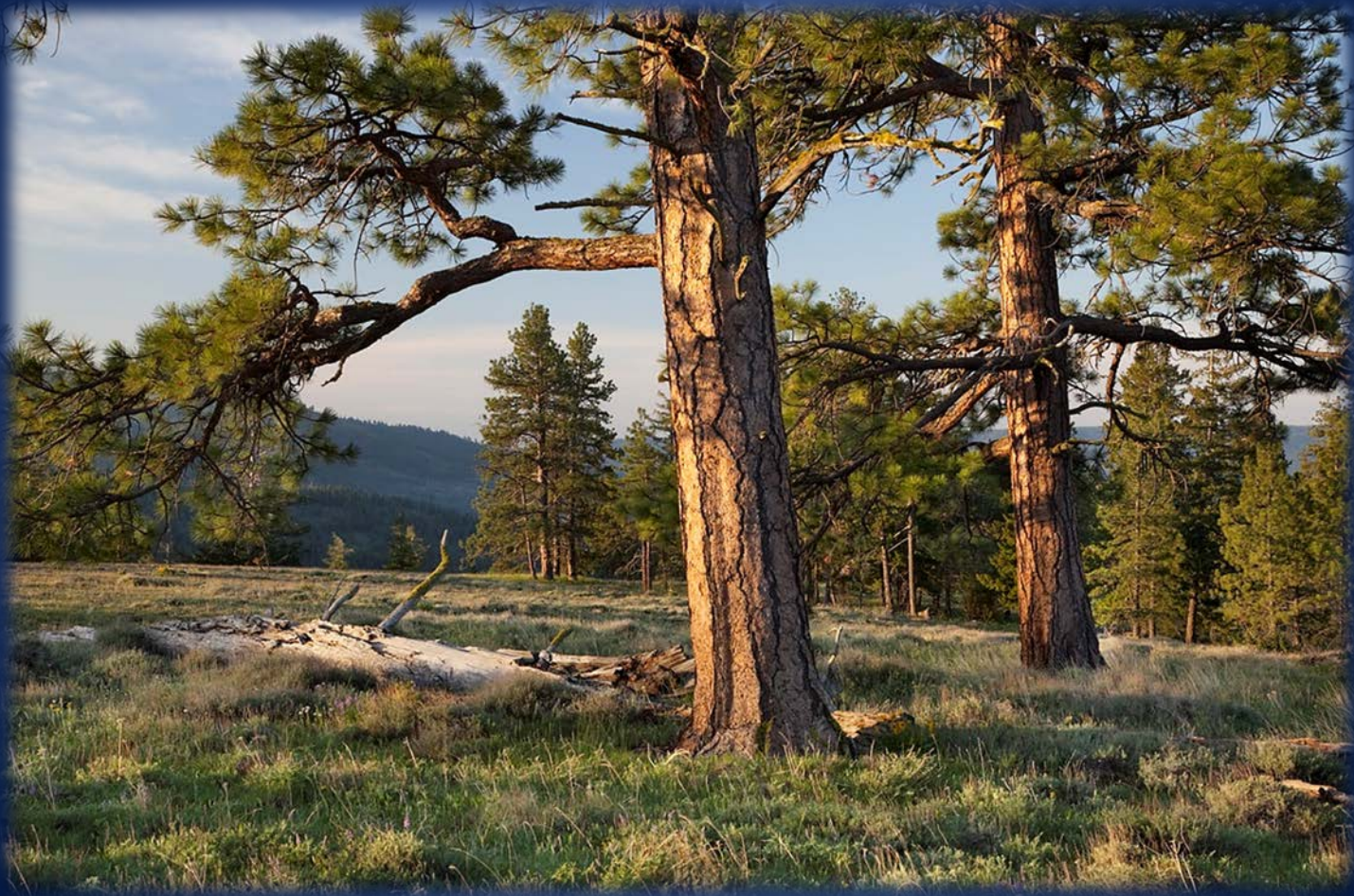
## Lands 20/20



*Washington Department of*  
**FISH and WILDLIFE**

Cynthia Wilkerson, Lands Division Manager  
Julie Sandberg, Real Estate Section Manager  
Lands Division, Wildlife Program

# 2018 Lands 20/20 Proposals



# Why?

## Agency Mission:

- To protect, restore and enhance fish and wildlife and their habitats.
- To provide sustainable and wildlife-related recreational opportunities.

# Why?

“It is therefore the policy of the state to acquire as soon as possible the most significant lands for wildlife conservation and outdoor recreation purposes before they are converted to other uses, and to develop existing public recreational land and facilities to meet the needs of present and future generations.”

RCW 79A.15.005

# Why Do We Buy Land?

*Conserve and restore the diversity of Washington's fish and wildlife species and habitats.*



# Why Do We Buy Land?

*Enhance sustainable fishing, hunting, and other wildlife-related outdoor opportunities.*



# Why Do We Buy Land?

*Improve Management of Current WDFW Lands.*



# Why Do We Buy Land?

*Preserve working lands for agriculture, forestry, and other sectors of the outdoor economy, particularly in rural areas.*





# WDFW Land Acquisition Principles

- Partnerships
- Best Conservation Alternative?
- Conservation easements?
- Long-term opportunities and ecological values
- Larger, contiguous
- Ecological and social importance

# Acquisition Steps

Scoping and  
Need

Evaluation and  
Prioritization

Land  
Transaction

Integrating  
Ownership

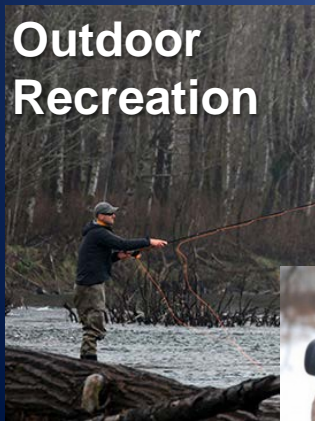


# Major Acquisition Funding Sources

- WA State Recreation and Conservation Office (RCO)
  - Washington Wildlife and Recreation Program (WWRP)
  - Boating Facilities Program (BFP)
  - Salmon Recovery Funding Board (SRFB)
- USFWS
  - Cooperative Endangered Species Conservation Fund “Sec. 6”
  - National Coastal Wetlands Conservation Program
  - Pittman-Robertson Act (PR)



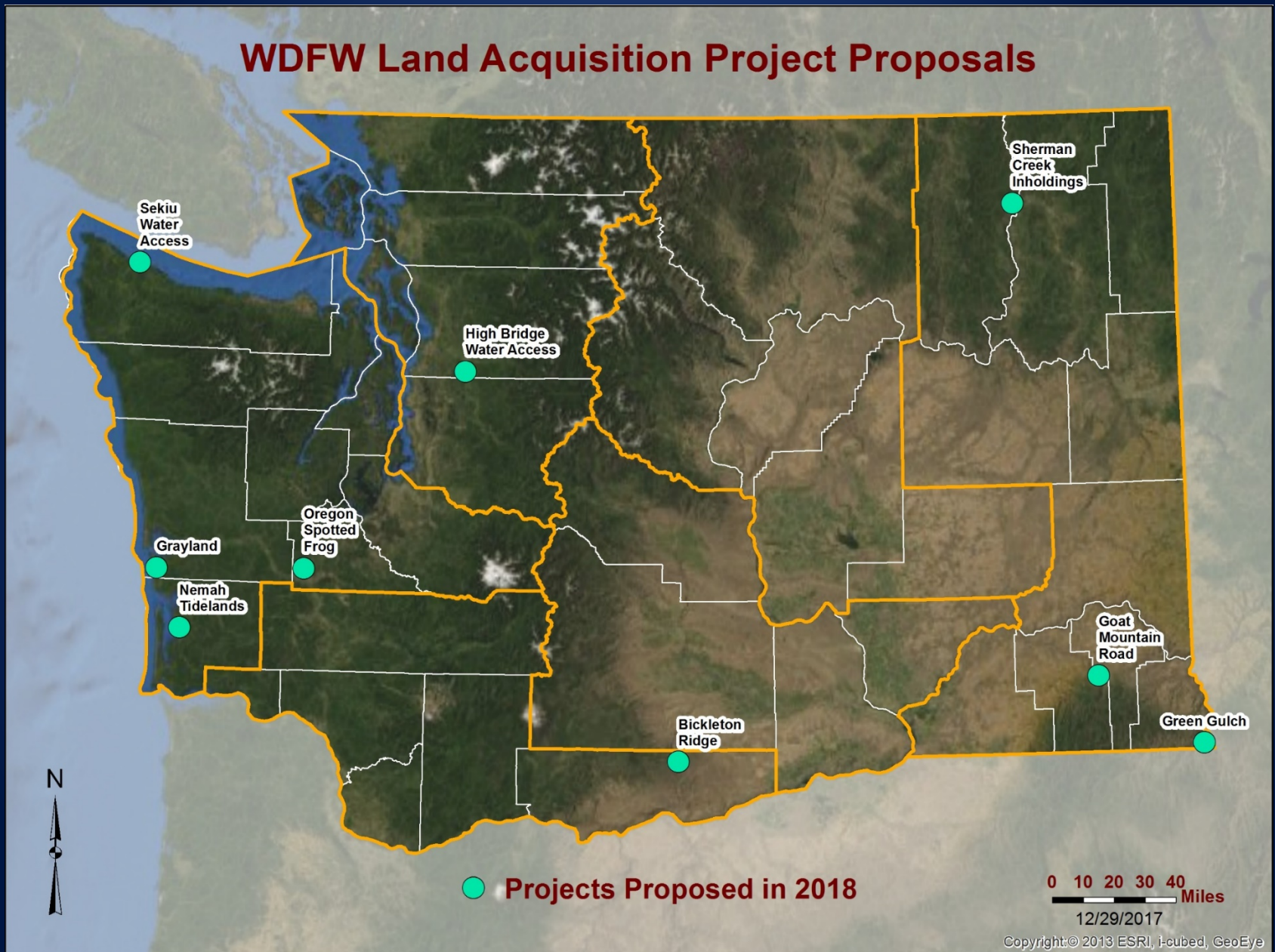
# Strengthen Common, Shared Values



# 2018 Projects Proposed

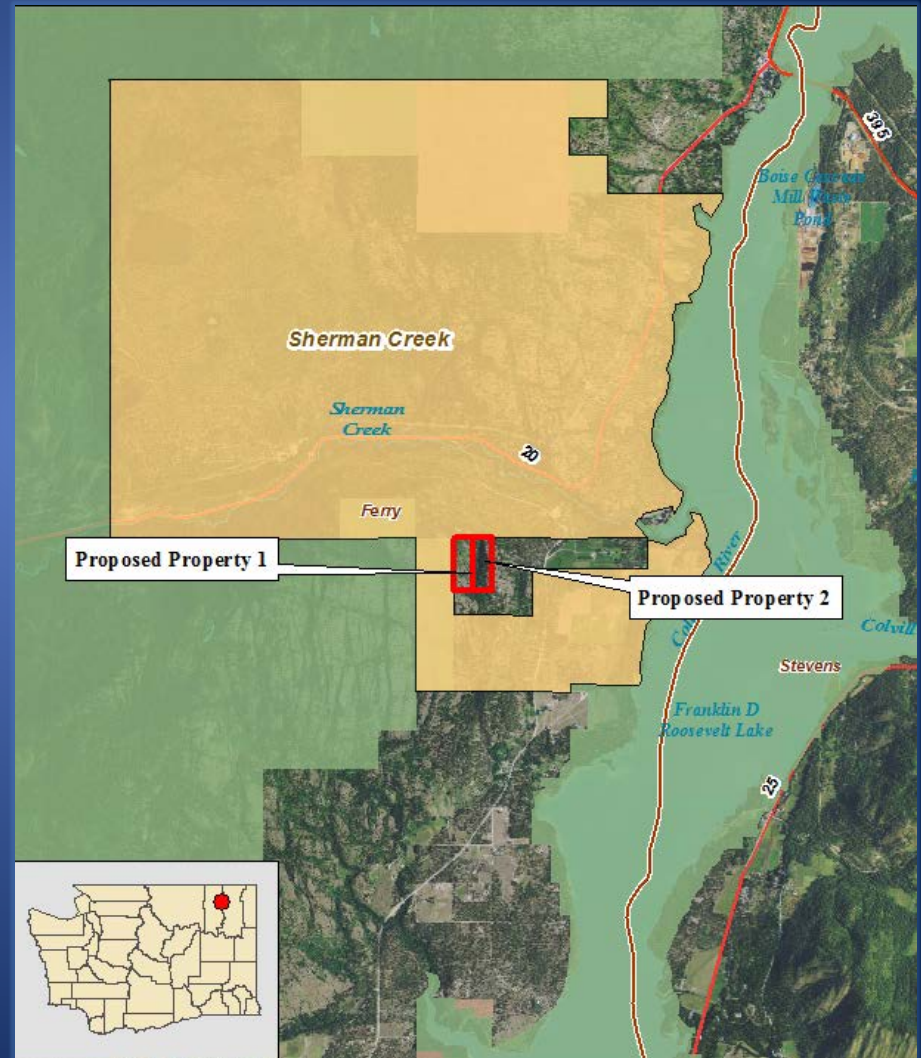
	Project	Acres	County
<b>Region 1</b>			
	Sherman Creek Additions	53	Ferry
	Green Gulch	643.5	Asotin
	Goat Mountain Road	43	Columbia
<b>Region 4</b>			
	High Bridge Access	2	Snohomish
<b>Region 5</b>			
	Bickleton Ridge (Simcoe)	256	Klickitat
<b>Region 6</b>			
	Sekiu Water Access	6.5	Clallam
	Oregon Spotted Frog Pass – Through	248	Thurston
	Nemah	103	Pacific
	Grayland	1750	Grays Harbor

# WDFW Land Acquisition Project Proposals



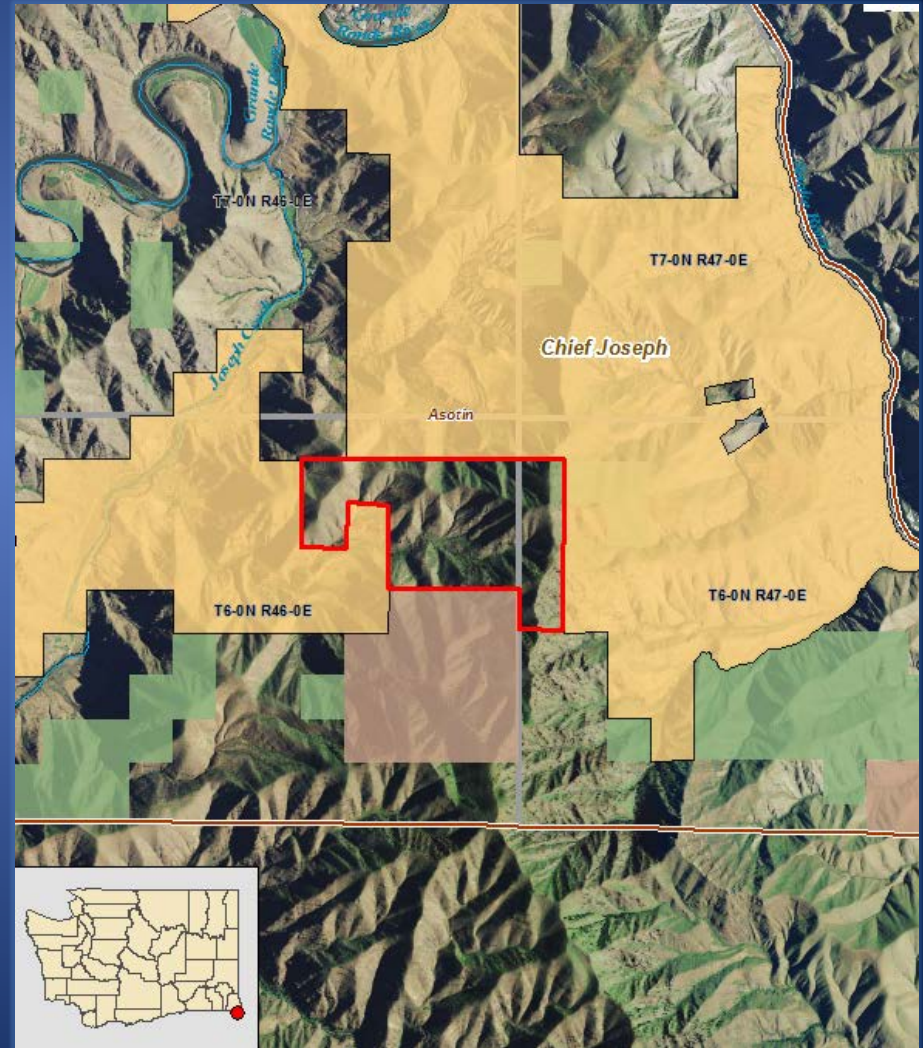
# Region 1: Sherman Creek Additions

- 53 acres
- Ferry County
- White-tailed Deer, Northern Goshawk, White-headed Woodpecker
- Hunting access
- Support: Ferry County Chapter of the Backcountry Horsemen



# Region 1: Green Gulch

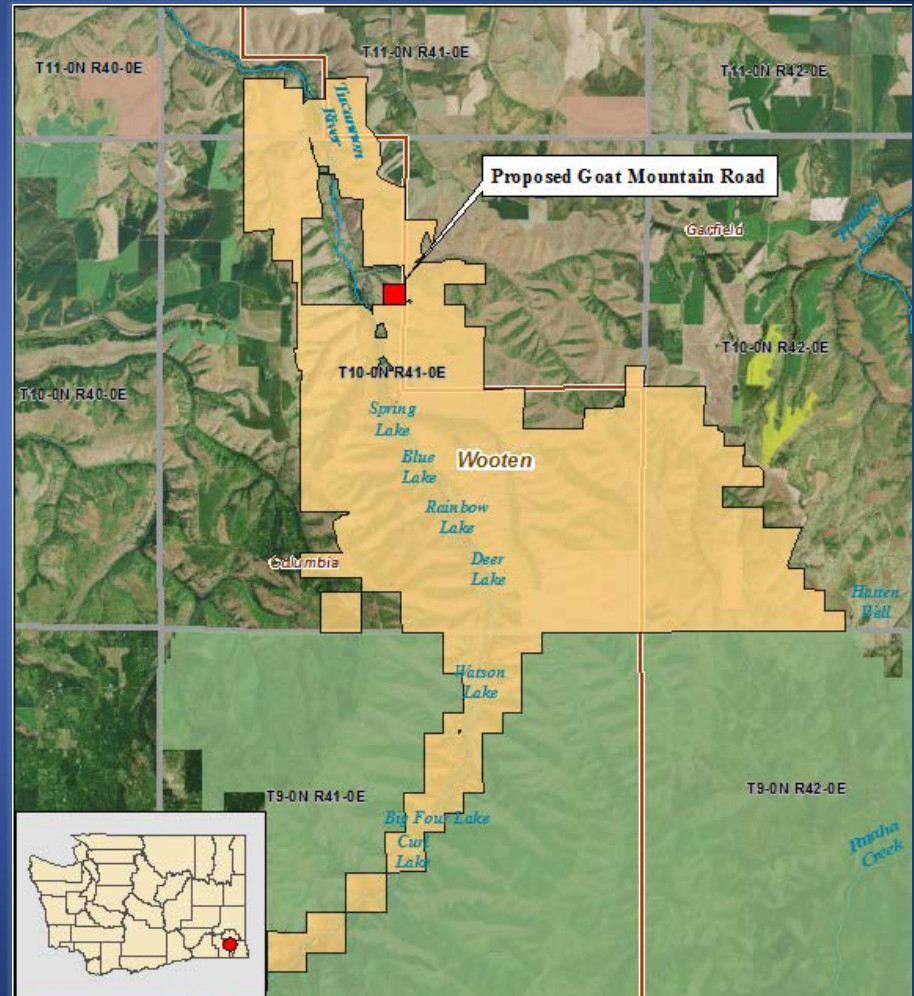
- 643.5 acres
- Asotin County
- Addition to Chief Joseph WLA
- Connectivity for Mule Deer, Elk, Mountain Quail
- Hunting, hiking, horseback riding, mountain biking, and bird watching
- Support: The Rocky Mountain Elk Foundation, and the Asotin County Lands Committee





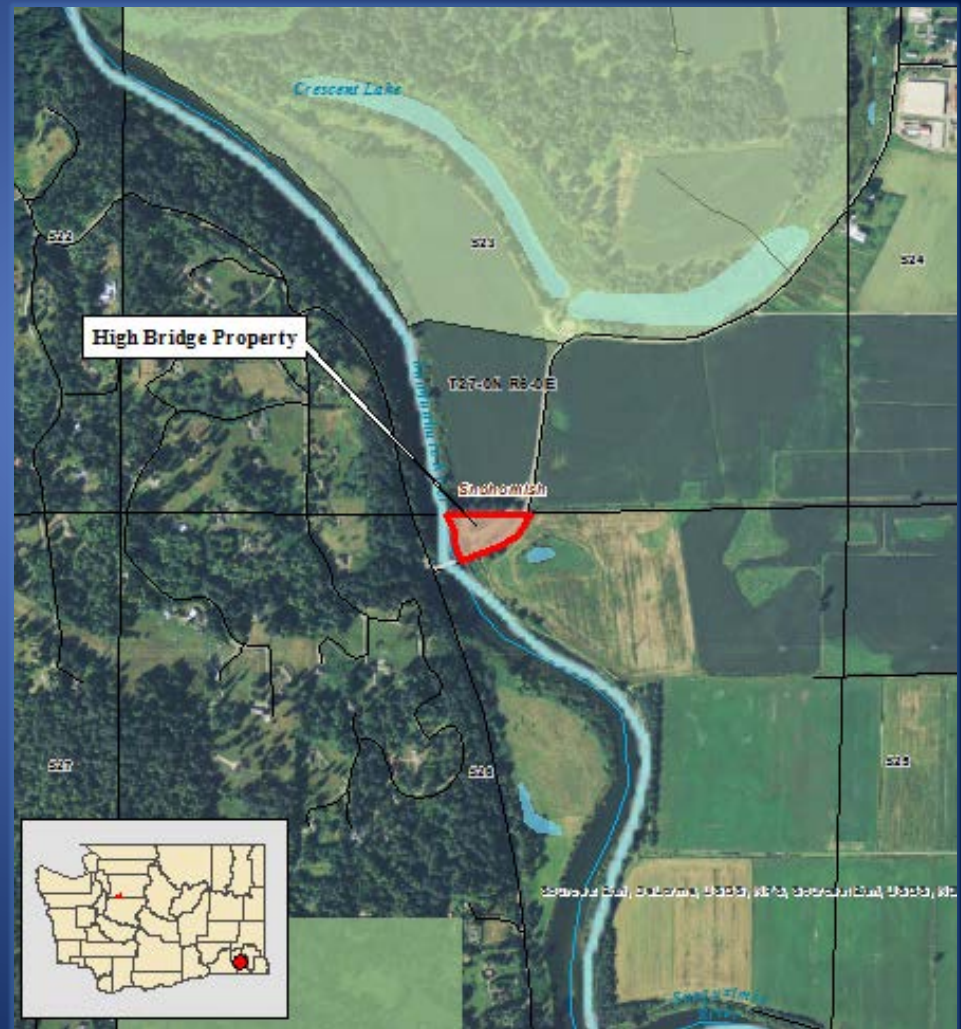
# Region 1: Goat Mountain Road

- 43 acres
- Columbia County
- Addition to the Wooten WLA
- Protection of Bighorn Sheep
- Road access, hunting opportunities
- Support: Washington Wild Sheep Foundation



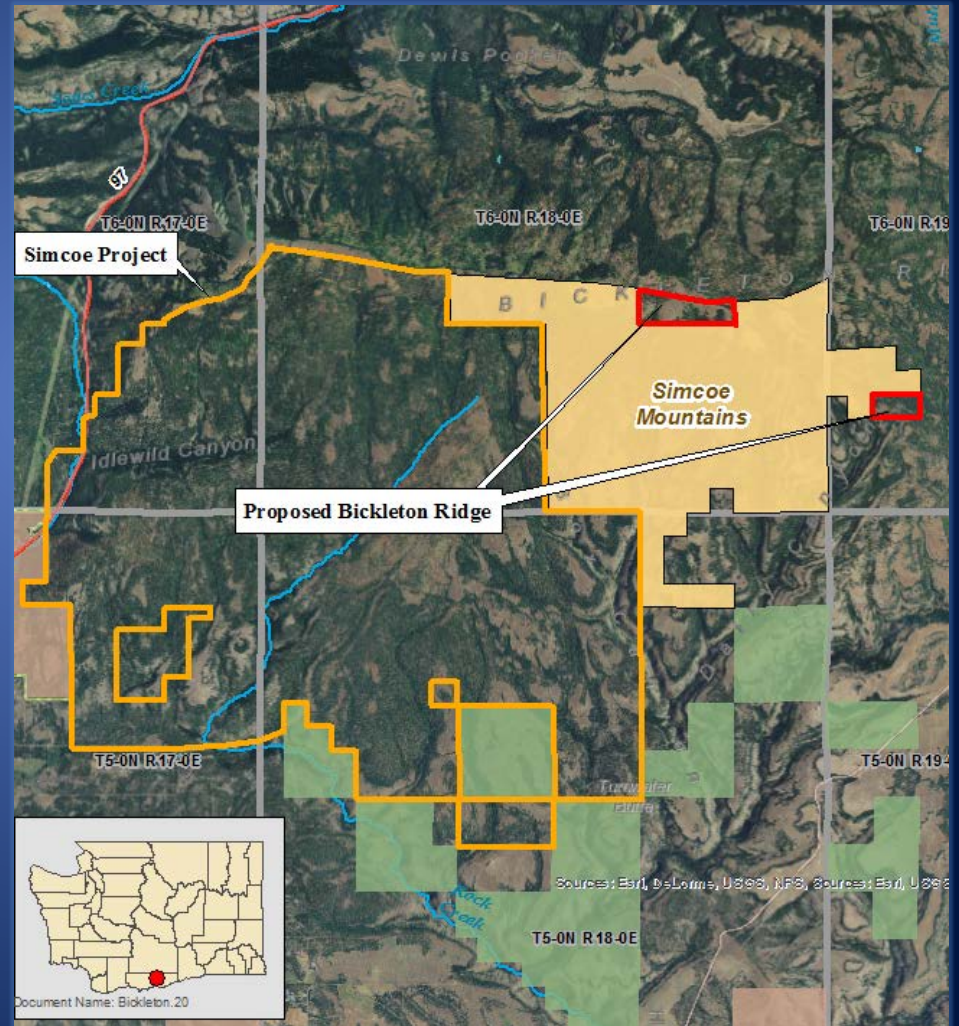
# Region 4: High Bridge Access

- 2 acres
- Snohomish County
- Donation - DOC
- Current WDFW Water Access site
- Only launch is within 8 miles



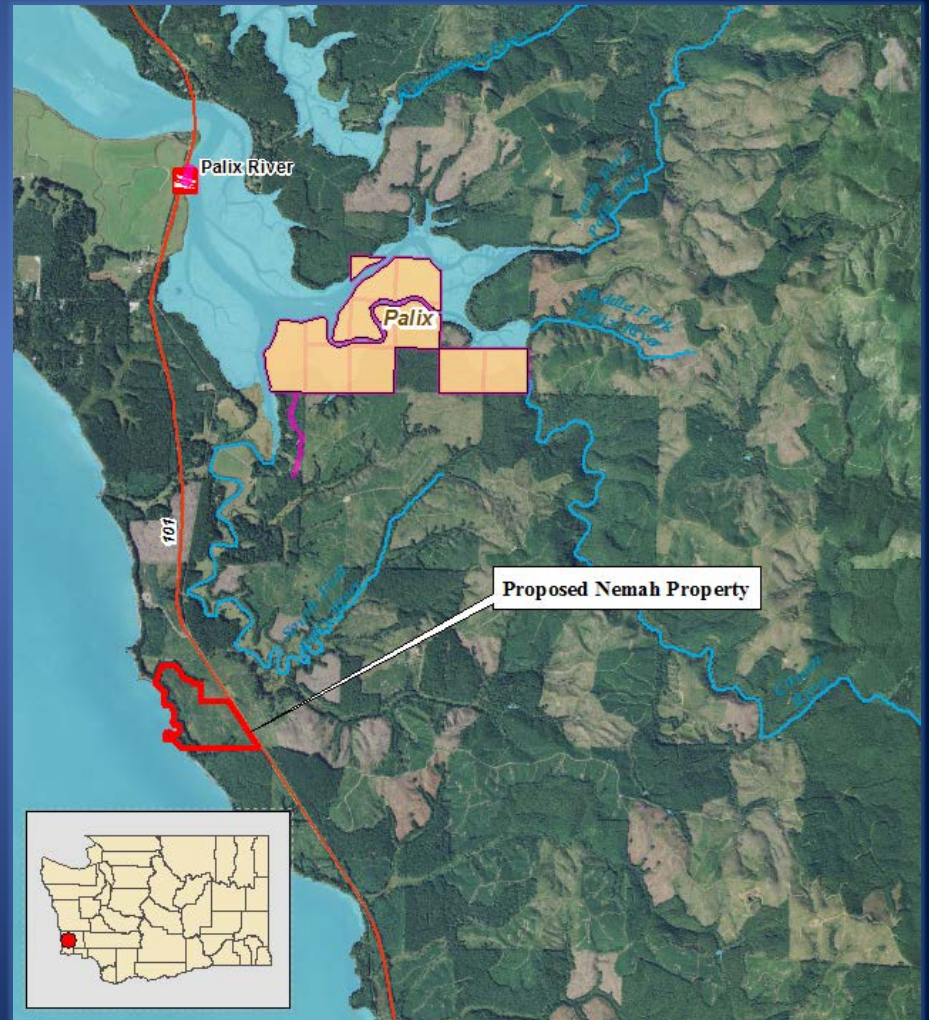
# Region 5: Bickleton Ridge

- 256 acres
- Klickitat County
- Western Gray Squirrel, Mule Deer, and Black-tailed Deer
- Oregon White Oak
- Significant hunting opportunities
- Partners: Central and Eastern Klickitat Conservation Districts, Simcoe Coordinated Resource Management Group



# Region 6: Nemah Tidelands

- 103 acres
- Pacific County
- 1 mile of shoreline
- Recreational access to shell fishing
- Support: The Long Beach Interpretive Center and Chamber of Commerce, Nahcotta Interpretive Center, Friends of Willapa Bay



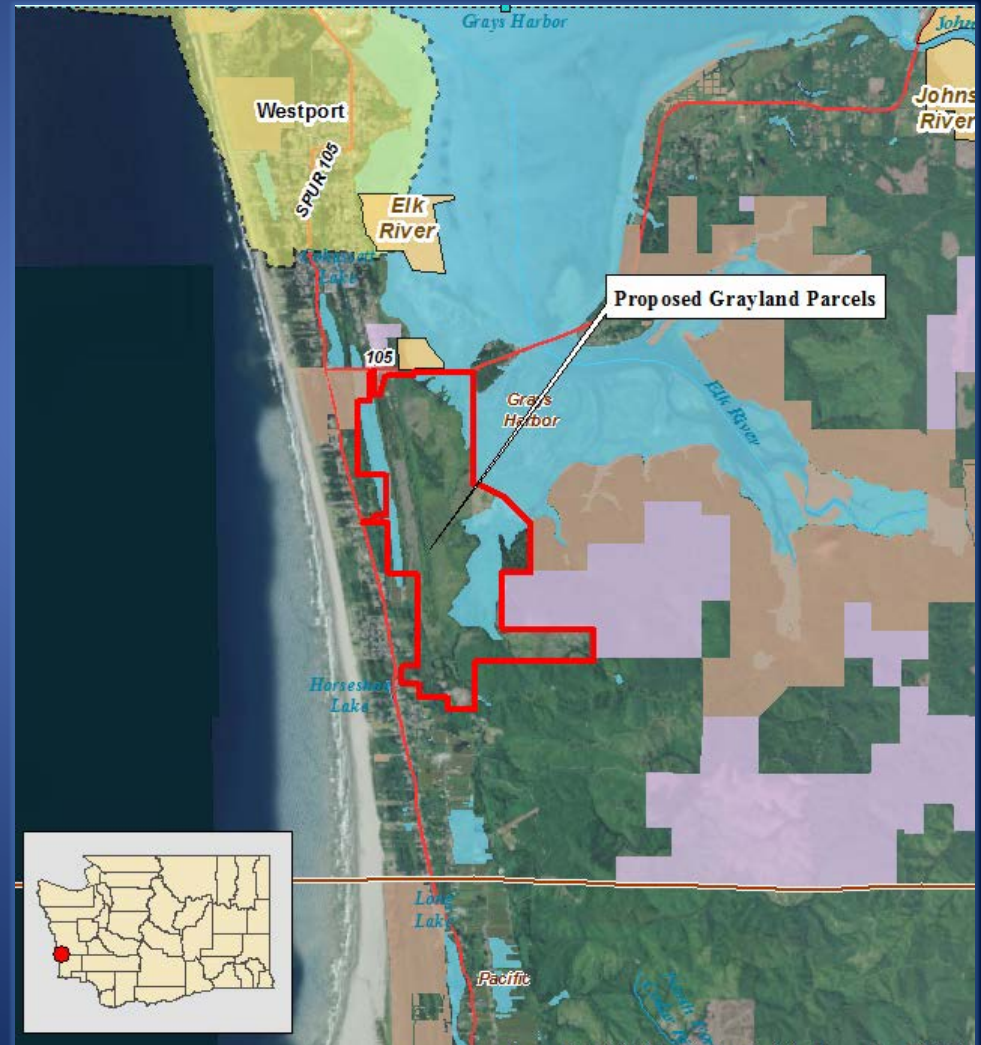
# Region 6: Sekiu Water Access

- 6.5 acres
- Clallam County
- Existing four lane boat ramp, 2 parking lots
- The only public launch is in between Neah Bay and Port Angeles
- Support: Local Business Owners



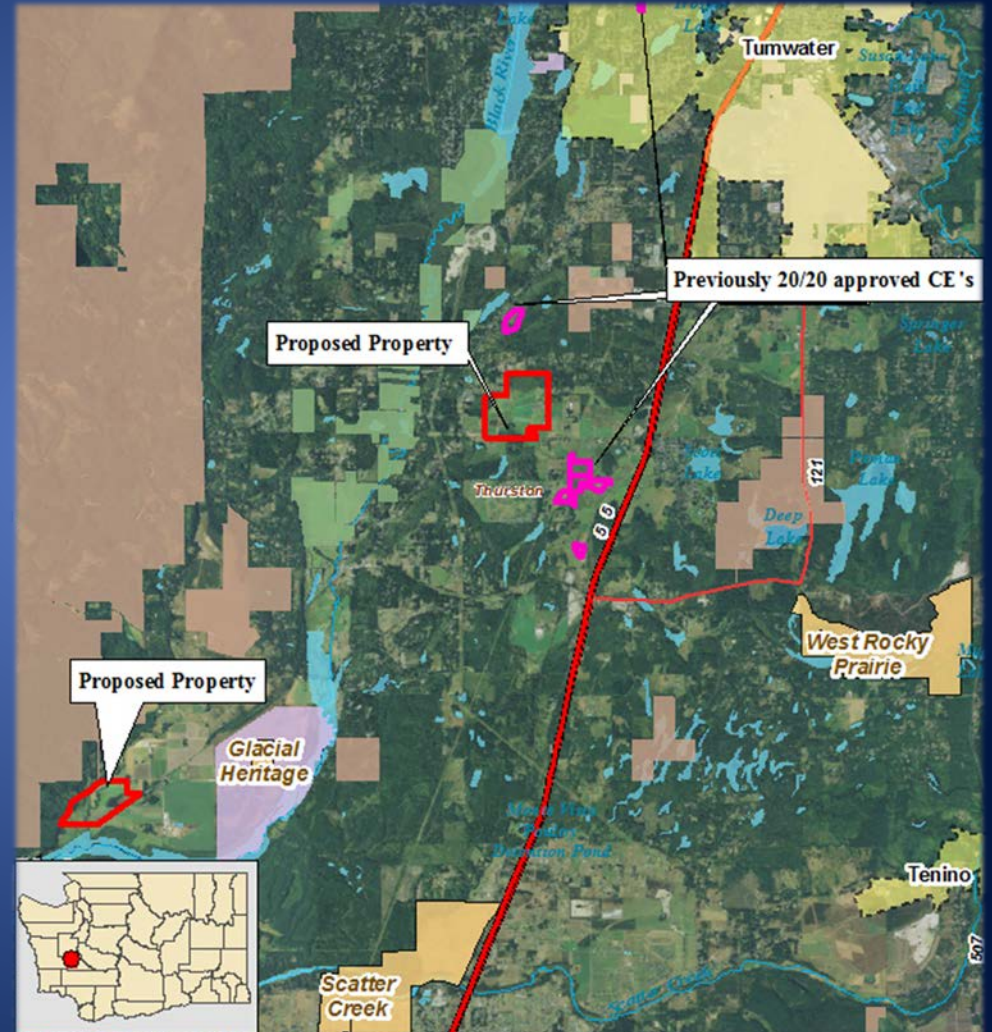
# Region 6: Grayland

- 1750 acres
- Grays Harbor County
- Tideland and marsh restoration
- Marbled Murrelet, Bull Trout, American Green Sturgeon
- Waterfowl and elk hunting
- Support: Ducks Unlimited, Chehalis Basin Watershed Partnership, Pacific Bird Habitat Joint Venture



# Region 6: Oregon Spotted Frog

- 2 parcels totaling 248 acres
- Thurston County
- Breeding sites
- Maintain working lands
- Partners: Capital Land Trust, South of the Sound Community Farm Land Trust, JBLM, and local zoos



# Lands 20/20: Public Comments





# Public Comments Highlights

## Support (~80%)

- Increased hunting opportunities in Eastern WA
- Support enhanced open space and/or recreation
- Support connectivity for wildlife
- Importance of tidal lands
- Wildlife habitat and species protection
- Public access

# Public Comment Highlights

## Concerns (~20%)

- Loss of tax base (Asotin, Ferry)
- Small acreage projects, less value
- Take care of what you already own
- Spend more money on hatcheries (Seiku)
- Concern about how access will be managed (Seiku)
- Regulation is good enough (Oregon Spotted Frog)

# Next Steps

- Director's Final Approval to pursue funding
- Grant applications
- Transaction work
- Land management

# Questions?

