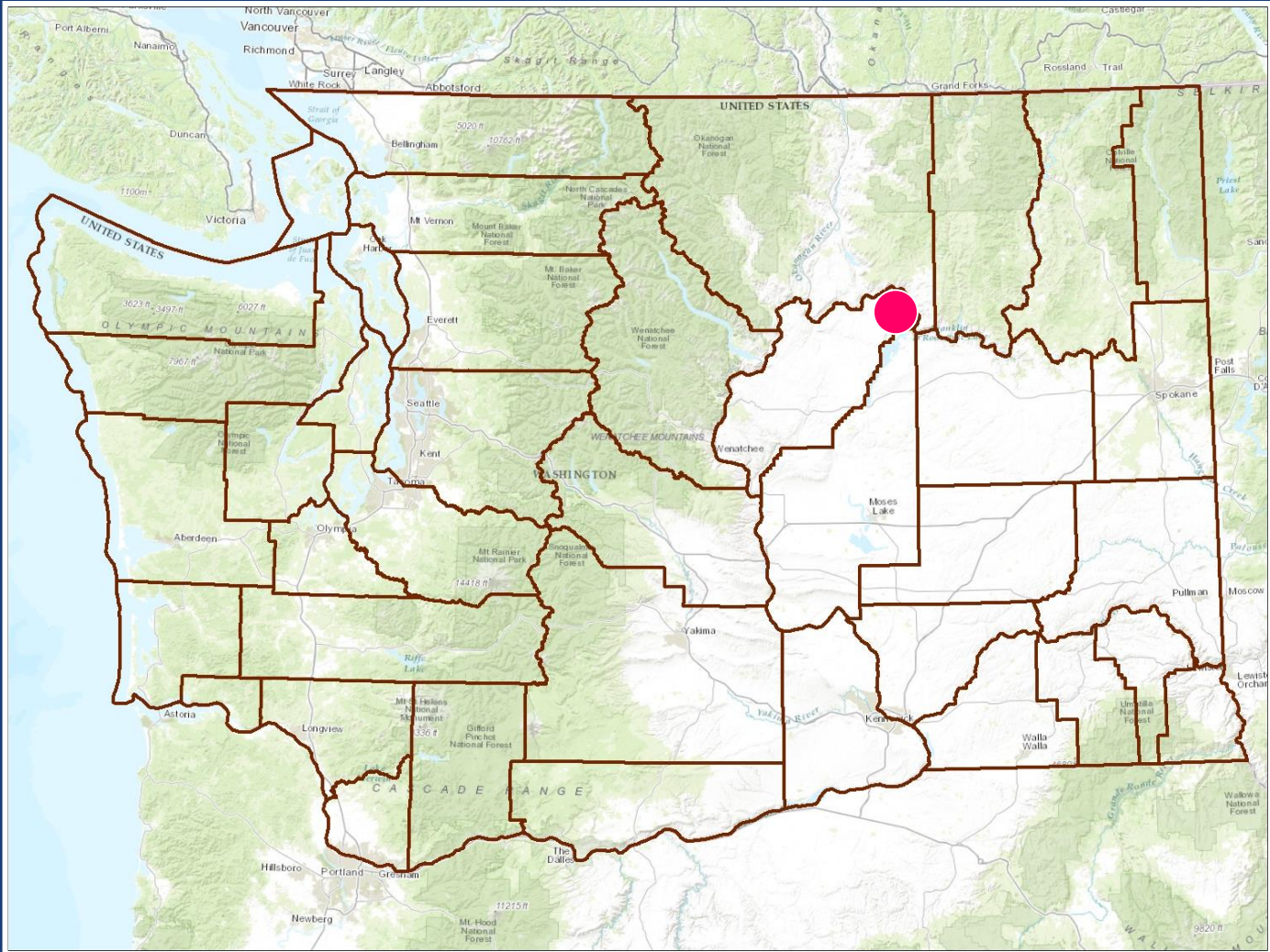




Land Transactions

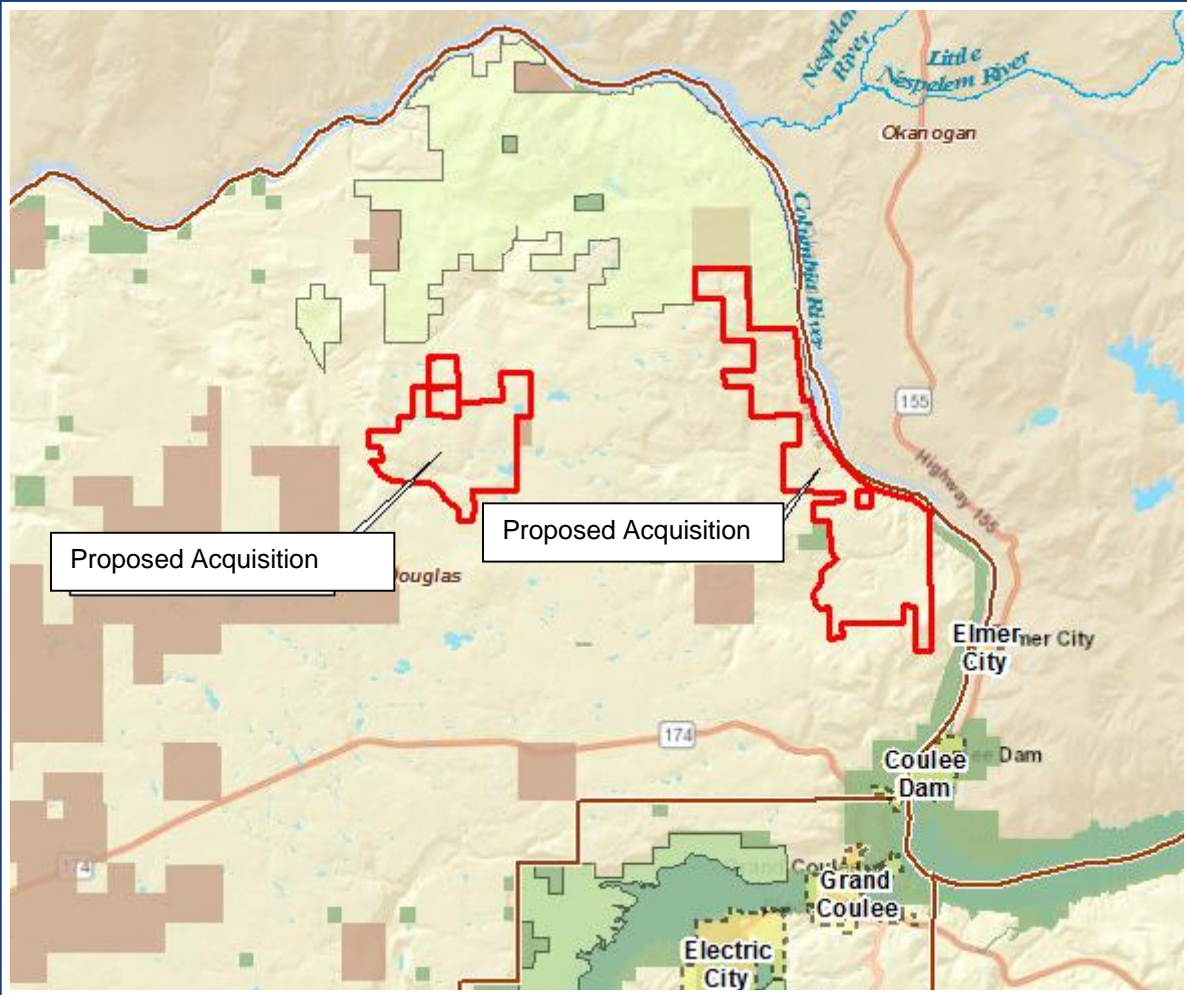
February 9 & 10, 2018

Grand Coulee Ranch, LLC Property Phase 3 Douglas County



7,217 (+/-)
acres

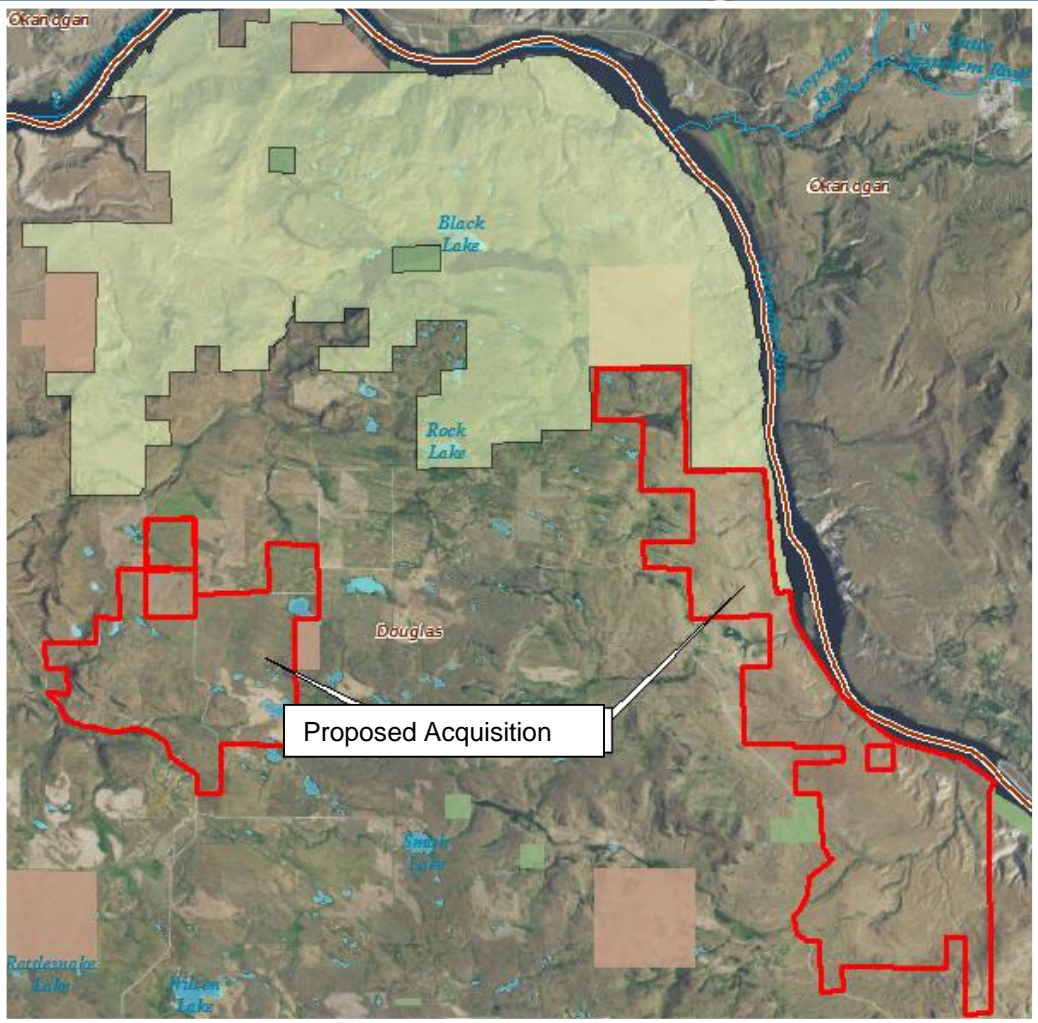
Grand Coulee Ranch, LLC Property Phase 3 Douglas County



Funded by
RCO WWRP
USFWS Section 6



Grand Coulee Ranch, LLC Property Phase 3 Douglas County

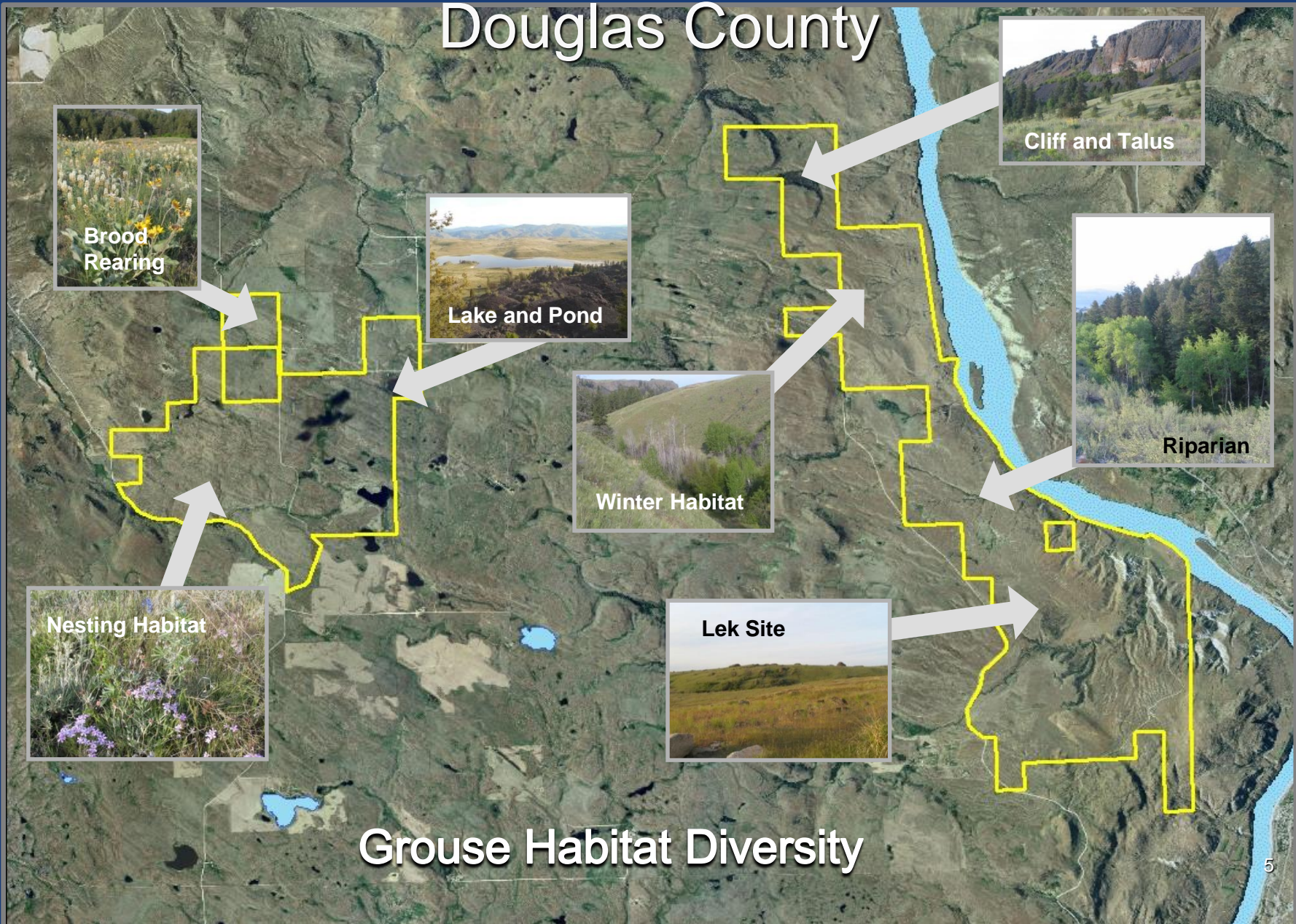


Appraised Value
\$3,103,310



Grand Coulee Ranch, LLC Property Phase 3

Douglas County



Brood Rearing

Lake and Pond

Winter Habitat

Cliff and Talus

Riparian

Nesting Habitat

Lek Site

Grouse Habitat Diversity

Grand Coulee Ranch, LLC Property Phase 3 Douglas County



Annual O & M - \$93,821

A photograph of a natural landscape featuring a field of wildflowers, including yellow sunflowers and white blossoms, growing among tall grasses. A large, dark rock is visible in the upper right background under a clear blue sky.

PUBLIC COMMENT

Land Transactions

- February 9 & 10, 2018