

# Columbia River Fishery Management Policies – Briefing/Workshop

Washington and Oregon Fish and Wildlife Commissions  
Joint Meeting  
November 1, 2018

# Joint Staff Report

- ▶ Oregon Department of Fish and Wildlife Staff
  - ▶ Chris Kern – Deputy Fish Division Administrator
  - ▶ Tucker Jones – Ocean Salmon and Columbia River Program Manager
- ▶ Washington Department of Fish and Wildlife Staff
  - ▶ Bill Tweit – Special Assistant – Fish Program
  - ▶ Ryan Lothrop – Columbia River Fishery Manager

# Agenda

- Timeline – Oregon and Washington Commission reviews
- Washington Columbia River Policy Review
- Concurrency
- Thermal Sanctuaries
- Next Steps



Columbia River near Pillar Rock

# Timeline

- Policies adopted both states late-2012
- Transition period for both states 2013-2016
- OFWC rule changes 2017
- WFWC 'extension' of transition period 2017-2018 for fall season



Washington  
Department of  
**FISH and  
WILDLIFE**

# Washington Columbia River Policy Review

Ryan Lothrop – Columbia River Fishery Manager  
Bill Tweit – Special Assistant – Fish Program

# Outline

- ▶ Background
- ▶ Process
  - Timeline
  - Commission Briefings
  - Public Outreach
- ▶ Policy Review
- ▶ Summary
- ▶ Next Steps



Similkameen Chinook

# Background

- ▶ Workgroup developed strategies in 2012
- ▶ WA Policy adopted in 2013, amended in 2017 and expires in 2023
- ▶ Three primary objectives:
  - Orderly fisheries
  - Conservation and recovery
  - Economic well-being and stability of sport and commercial fisheries
- ▶ Recognizes uncertainty in allowing adaptive management
- ▶ Designed to establish recreational priority for salmon and steelhead in the mainstem Columbia River

# Process

- ▶ **Timeline**
  - Request for comprehensive review in January 2018
  - Provided 40 questions from WFWC to determine the 5-year Policy performance
- ▶ **Commission meetings**
  - Fish Committee meetings (Feb–Oct)
- ▶ **Public Outreach**
  - Columbia River Advisory Groups/Public (Mar–Sept)



# Policy Review

- ▶ The review is summarized by major themes from 2013–2017
  - Management
  - Recreational
  - Commercial
  - Tribal
  - Allocation
  - Alternative Gear
  - Economics



Upriver Spring Chinook

# Management Report Card

Policy Strategy	Score
Conservation*	Red
New Mark-selective fisheries	Red
Predation*	Yellow
Concurrence	Yellow
Management tools*	Green

- Includes some activities that are on-going outside of the policy



Coweeman Weir

# Recreational Report Card

Policy Strategy	Score
Recreational priority	Green
Barbless hooks	Green
Logbooks*	Yellow

\* On-going statewide



Fishing near Bridgeport

# Commercial Report Card

Policy Strategy	Score
MSC certification	
Buyback	
New WA SAFE areas	
2017 monitoring	



Commercial Mainstem Fishing

# Tribal Report Card

Policy Strategy	Score
Colville allocation*	
Wanapum subsistence*	
<i>US v Oregon</i> tribes*	

\* Provided prior to the policy



Colville seine fishery

# Allocation Report Card

Policy Strategy	Score
Spring Chinook*	
Rec/Commercial	Green
Within sport	Yellow
Summer Chinook	
Rec/Commercial	Green
Below/Above PRD	Green
Fall Chinook	
Tules	Green
Brights	Green

\* Catch Balance



Summer Chinook

# Alternative Gear Report Card

Policy Strategy	Score
Gillnets phase out	Yellow
Alt gear testing*	Green
Alt gear performance	Yellow
Alt gear implementation	Red

\* Pound net testing on-going



Purse Seine testing

# Economics

- ▶ Economic enhancement was expected to occur due to:
  - Re-allocation of impacts to recreational fishery
    - Increased angler trips and days on water
  - Additional production in SAFE areas
  - Implementation of alternative gear in commercial fishery

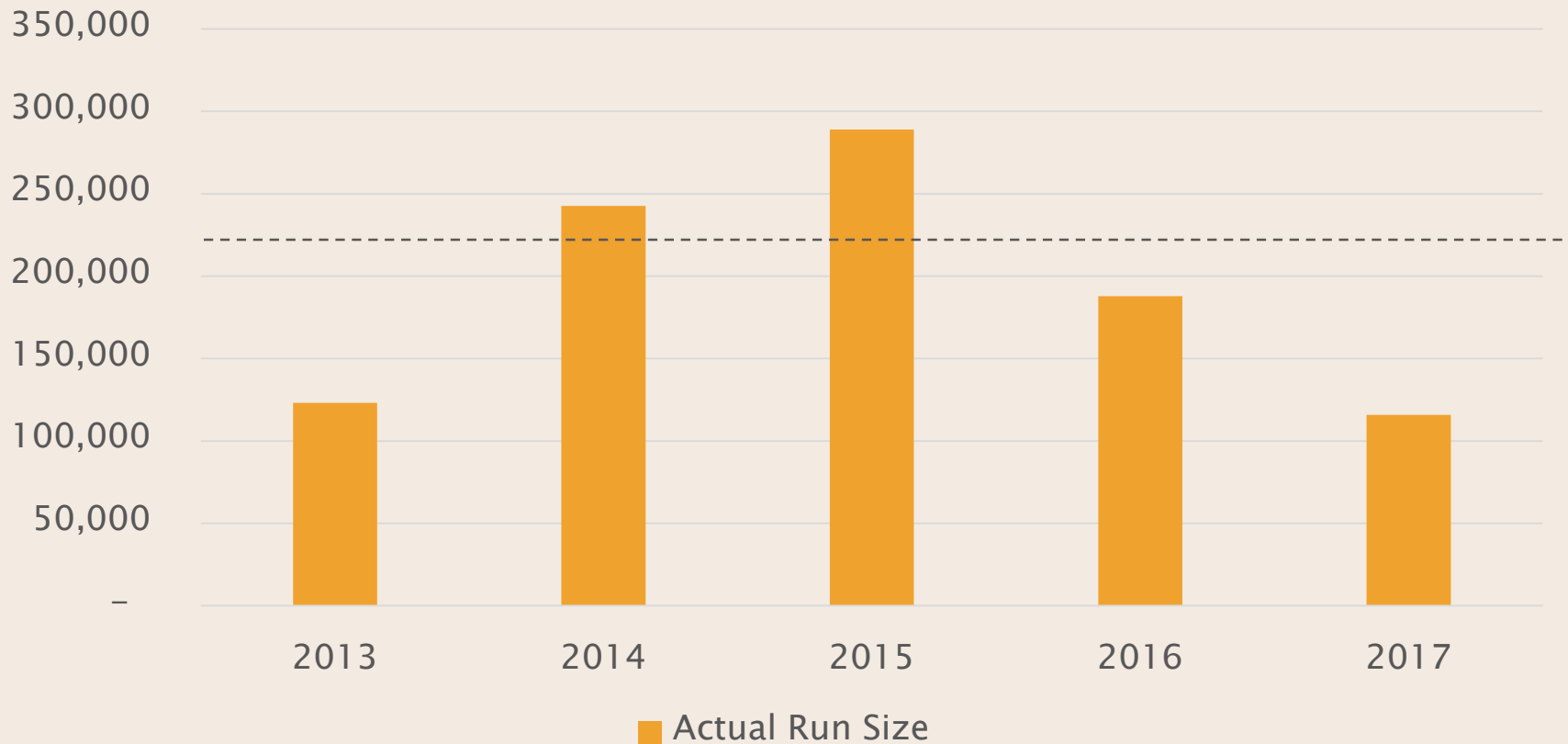


Columbia River Fall Chinook 2018 Seattle Fish Market



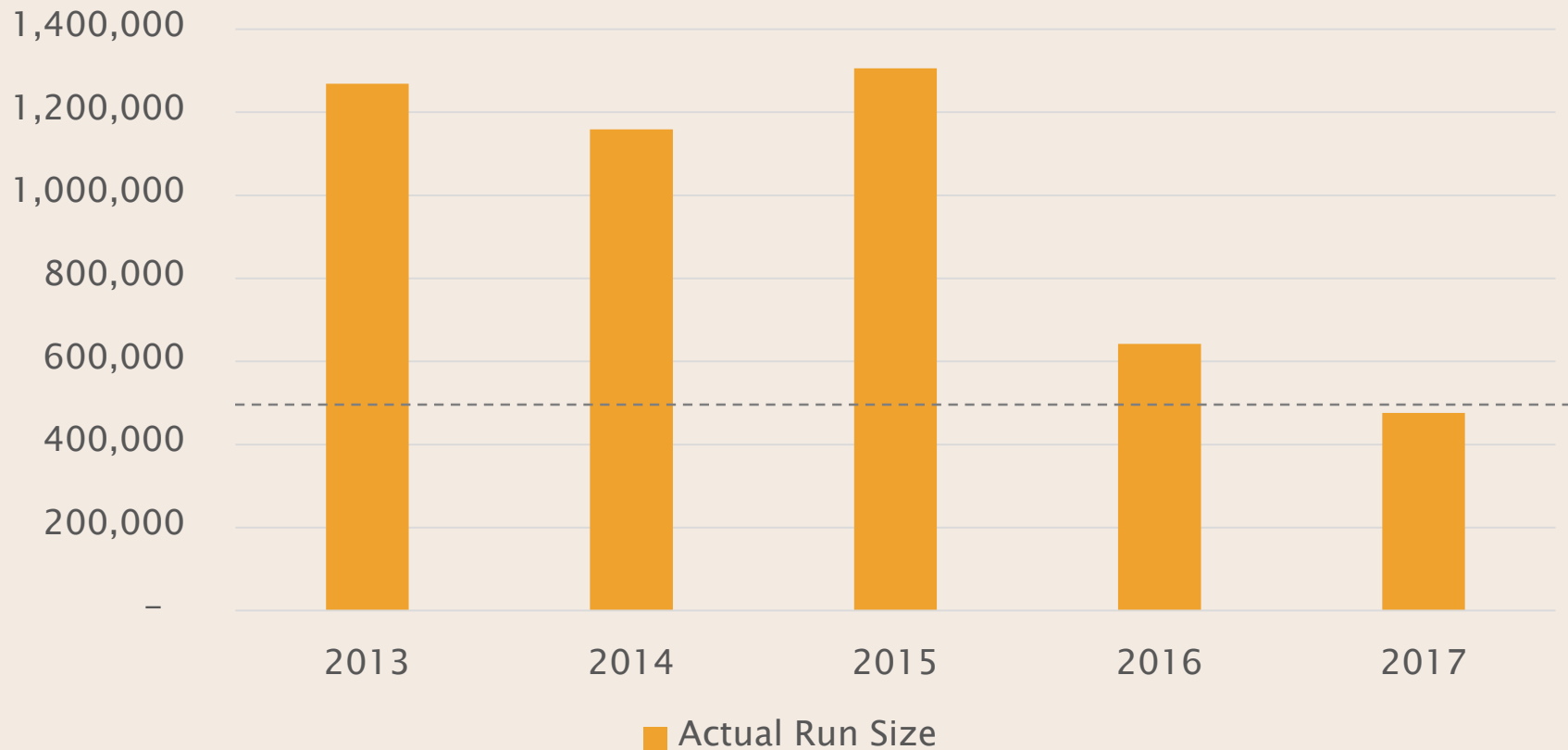
# Run Sizes Compared to Expected

Upriver Spring Chinook Run Sizes



# Run Sizes Compared to Expected

Fall Chinook Run Sizes



# Economics Report Card

Policy Strategy	Score
Enhancements	
Recreational trips/days	Yellow
Commercial ex-vessel values	Red
SAFE	
Increased production	Yellow
Expanded areas	Yellow
New WA areas	Red
Increased ex-vessel values	Yellow
Adaptive management	Yellow

# Summary

- ▶ Expectations of the WA policy have not fully been realized:
  - Commercial SAFE enhancement and alternative gear development have not replaced mainstem fisheries
  - Recreational fisheries have only seen marginal benefits to changes in allocation

# Next Steps

- ▶ November 3, 2018 – WA staff discussion with WFWC on finalizing report and next steps
- ▶ Discussion of ideas, alternatives, concurrency




# Ideas from public and WFWC

- ▶ No change – status quo/drastring course correction needed
- ▶ Negotiate concurrency with Oregon/leave non-concurrency alone for 2019
- ▶ Allocation options
  - Sport allocation for upriver/lower river
  - Sport/commercial
  - Matrix for allocation
- ▶ Logbooks for sport
- ▶ Barbless hooks voluntary

# Ideas from public and WFWC

- ▶ Prioritize buyback – include funding
- ▶ Alternative gear – hire experts to assist
- ▶ Allow spring Chinook tangle nets
- ▶ Continue gill net ban/end gill net ban
- ▶ Consider economic value to smaller communities
- ▶ Better SAFE areas in Washington – include commercial industry in development
- ▶ More interface with recovery boards

# WA Columbia River Policy Review



Hanford Reach



# Concurrency

## Spring Chinook

	OFWC	WFWC	Concurrency?
Spring Chinook	<ul style="list-style-type: none"> <li>• 80/20 sport/commercial</li> <li>• No pre-update buffer applied to commercial off-channel</li> <li>• <b>Commercial mainstem tangle net allowed after run update</b></li> <li>• <b>Unused commercial impacts left for escapement</b></li> </ul>	<ul style="list-style-type: none"> <li>• 80/20 sport/commercial</li> <li>• No pre-update buffer applied to commercial off-channel</li> <li>• <b>Commercial mainstem not allowed</b></li> </ul>	<ul style="list-style-type: none"> <li>• Allocation <input checked="" type="checkbox"/></li> <li>• Buffer <input checked="" type="checkbox"/></li> <li>• <b>Mainstem commercial fishing <input type="checkbox"/></b></li> <li>• <b>Unused impacts <input type="checkbox"/></b></li> </ul>

# Concurrency

## Summer Chinook

	OFWC	WFWC	Concurrency?
Summer Chinook	<ul style="list-style-type: none"> <li>80/20 sport/commercial</li> <li>Non-gillnet gear</li> <li><b>Unused commercial catch left for escapement</b></li> </ul>	<ul style="list-style-type: none"> <li>80/20 sport/commercial</li> <li>Non-gillnet gear only</li> <li><b>Unused commercial catch transferred to sport upstream of Bonneville or to escapement</b></li> </ul>	<ul style="list-style-type: none"> <li>Allocation <input checked="" type="checkbox"/></li> <li>Gears <input checked="" type="checkbox"/></li> <li><b>Unused impacts <input type="checkbox"/></b></li> </ul>

# Concurrency

## Fall Chinook

	OFWC	WFWC	Concurrency?
Fall Chinook	<ul style="list-style-type: none"> <li>• <b>≤70/≥30</b> sport/commercial</li> <li>• Gillnets allowed upstream of Lewis R.</li> <li>• <b>Up to 2% of commercial allocation to alternative gears</b></li> </ul>	2017-18: <ul style="list-style-type: none"> <li>• <b>≤75/≥25</b> sport/commercial</li> <li>• Gillnets allowed upstream of Lewis R.</li> </ul> 2019+: <ul style="list-style-type: none"> <li>• <b>≤80/≥20</b> sport/commercial</li> <li>• Gillnets not allowed</li> </ul>	2017-2018: <ul style="list-style-type: none"> <li>• <b>Allocation</b> ❌</li> <li>• Gears ✅</li> </ul> 2019+: <ul style="list-style-type: none"> <li>• <b>Allocation</b> ❌</li> <li>• <b>Gears</b> ❌</li> </ul>

# Concurrency Coho

	OFWC	WFWC	Concurrency?
<b>Coho</b>	<ul style="list-style-type: none"> <li>• Non-gillnet gears</li> <li>• Assign commercial sufficient share of impact to implement off-channel coho and fall Chinook, and mainstem fall Chinook and hatchery coho fisheries</li> <li>• Assign balance to mainstem recreational</li> <li>• Assign remainder (if any) to mainstem commercial coho fisheries</li> </ul>	<ul style="list-style-type: none"> <li>• Non-gillnet gears</li> <li>• Assign commercial sufficient share of impact to implement off-channel coho and fall Chinook, and mainstem fall Chinook and hatchery coho fisheries</li> <li>• Assign balance to mainstem recreational</li> <li>• Assign remainder (if any) to mainstem commercial coho fisheries</li> </ul>	<ul style="list-style-type: none"> <li>• Allocation <input checked="" type="checkbox"/></li> <li>• Gears <input checked="" type="checkbox"/></li> <li>• Unused impacts <input checked="" type="checkbox"/></li> </ul>

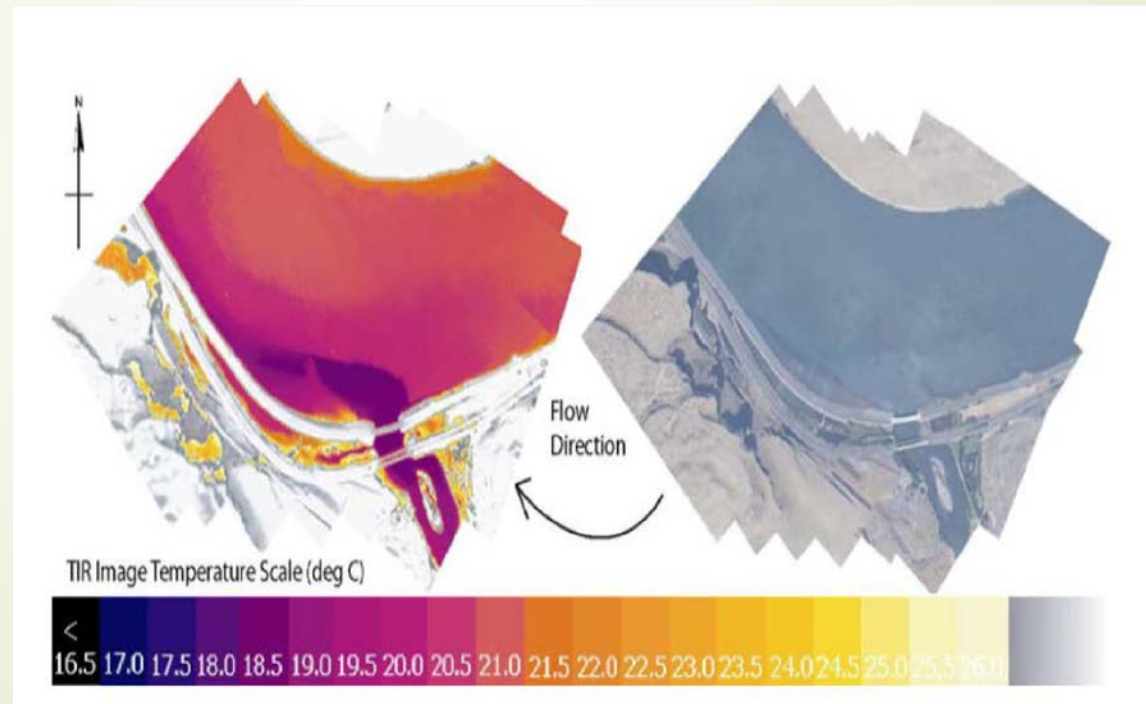
# Concurrency Summary

- ▶ Joint management and concurrency does not impact state sovereignty.
- ▶ Concurrency promotes orderly, enforceable fisheries and increases likelihood of allocations being achieved.
- ▶ Larger impact for boat based fisheries
- ▶ States already periodically work together to true up nuts and bolts issues.

# Thermal Sanctuaries

30

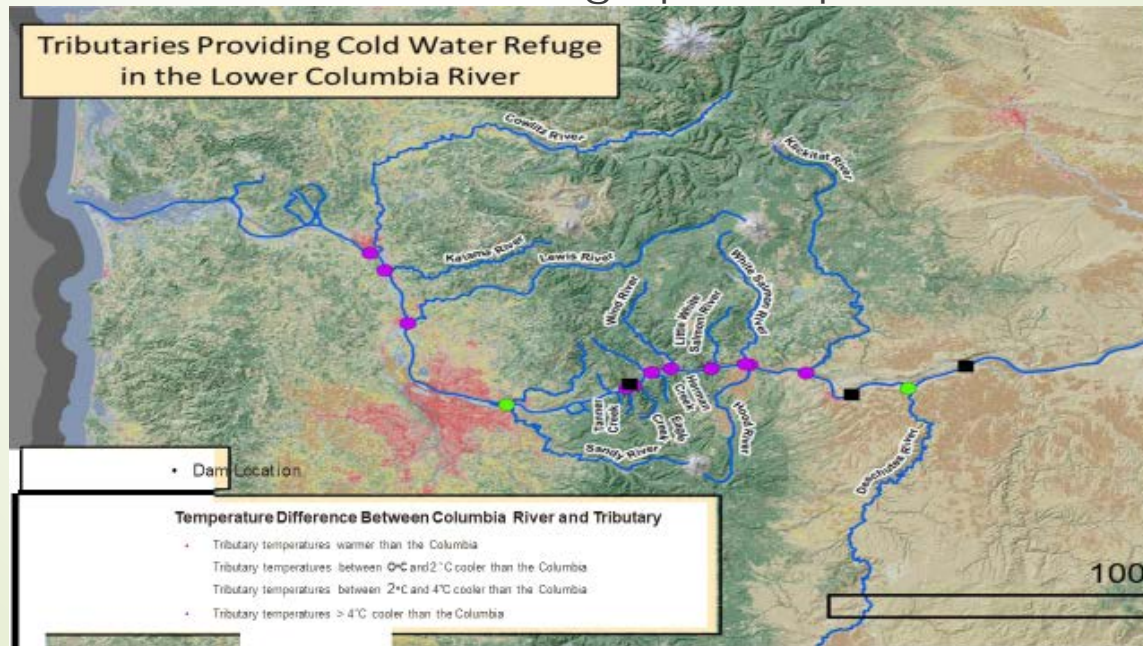
- Thermal issues have been forefront since 2015
- Low steelhead returns in 2017 and 2018 prompted OR and WA to take management actions those years
- Recent litigation throws another wrinkle into this



# Thermal Sanctuaries

31

- ▶ EPA identifying and analyzing priority coldwater refuge areas and effects in both states – process ongoing
- ▶ Draft CWR report expected this winter
- ▶ State focus for Thermal Sanctuaries is upstream of Bonneville Dam
- ▶ Recommend folding thermal sanctuaries concept into the EPA work and a thorough public process



# Next Steps

- ▶ Commission Discussion
- ▶ Questions and Answers

