

PROPOSED LAND TRANSACTIONS

TABLE OF CONTENTS

November 2nd, 2018

Decision Page.....		i
Proposed Transfer	Lewis River Easement Expansion Cowlitz County	
Highways Map		1a
Local Map		1b
Proposed Easement Exchange	Tumwater Falls Fish Hatchery Thurston County	
Highways Map		2a
Local Map		2b

Summary Sheet

Meeting dates: November 2, 2018

Agenda item: Proposed Land Transactions

Presenter(s): Julie Sandberg, Real Estate Services Manager

Background summary:

Item 1: Lewis River Easement Expansion- This transaction expands an existing road easement across WDFW property at the Lewis River Fish Hatchery in Cowlitz County. The current easement is 10' wide and serves two properties owned by the same individual. This action will expand the current 10' wide easement to 60' wide and authorize a short portion of a second existing driveway. There is little, if any, impact expected to the hatchery operation. The landowner has agreed to compensate the department \$9,800 for the two easements.

Item 2: Tumwater Falls Fish Hatchery Easement Exchange – this easement proposal is part of the Tumwater Falls Hatchery Facility Modification. This major renovation requires an additional easement from the landowner (the Olympia Tumwater Foundation) and the relinquishment of an existing WDFW easement. WDFW has completed the design phase of the \$6,000,000.00 capital project and requires this easement exchange to begin construction to include new rearing ponds, a pollution abatement pond, a new surface water intake, and a modification of the existing fish way.

Staff recommendation:

Approve the transactions as presented.

Policy issue(s) and expected outcome:

Improving infrastructure for a proposed facility that will protect critical fish species.

Fiscal impacts of agency implementation:

Public involvement process used and what you learned:

The Tumwater Falls Hatchery Facility modification project has had extensive public involvement throughout the permitting phase including City Council and Tumwater Historic Commission meetings, SEPA and tribal coordination.

Action requested and/or proposed next steps:

Approve the land transactions as presented.

Draft motion language:

Motion: I move to approve the transactions as presented by staff.

Is there a "second"?

If so, then motion maker discusses basis for motion; other Commissioners discuss views on motion; amendments, if any, proposed and addressed

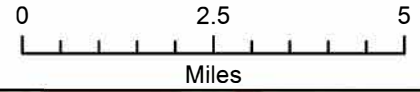
Post decision communications plan:

WDFW will distribute a press release informing the public of these transactions.

ITEM:1 LEWIS RIVER EASEMENT EXPANSION

COUNTY: COWLITZ

LEGAL: SECTION 6, TOWNSHIP 5N, RANGE 2E, W.M.

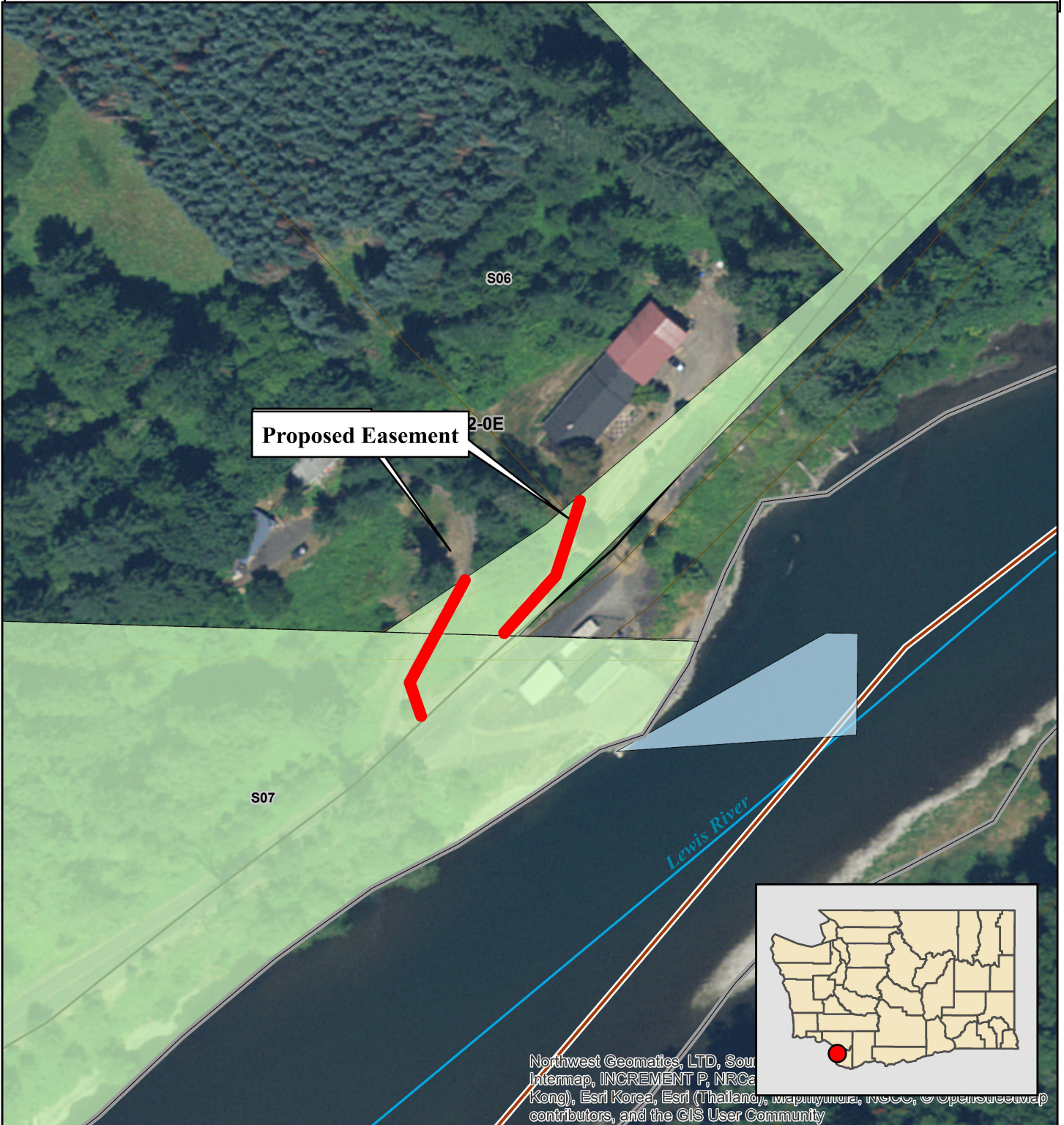
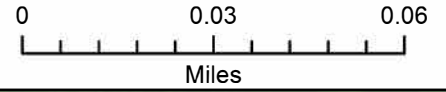


Sources: Esri, HERE, DeLorme, Esri Japan, METI, Esri China (H), MapmyIndia, NGCC, © OpenStreetMap contributors, and the GIS User Community

ITEM:1 LEWIS RIVER EASEMENT EXPANSION

COUNTY: COWLITZ

LEGAL: SECTION 6, TOWNSHIP 5N, RANGE 2E, W.M.

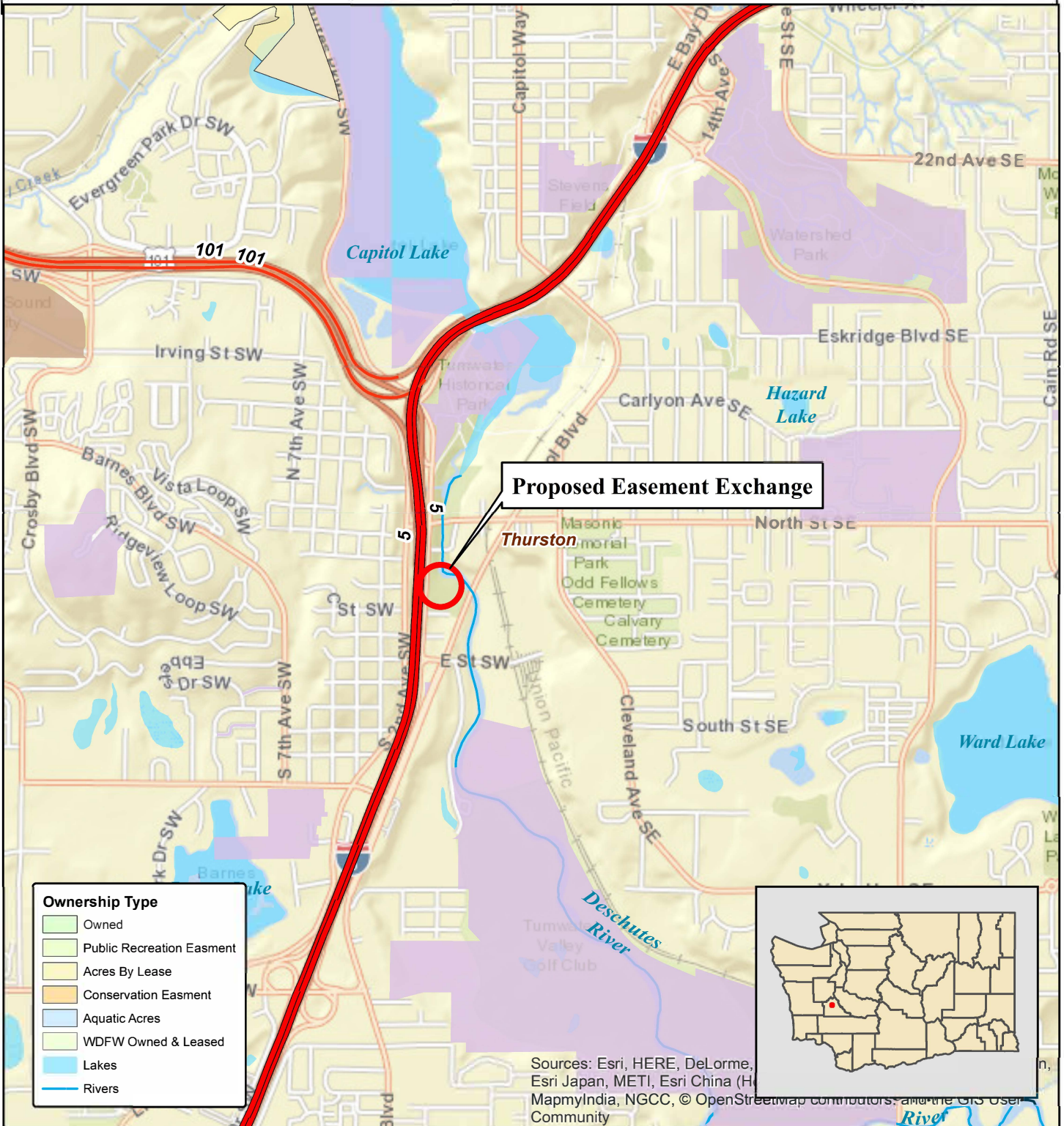
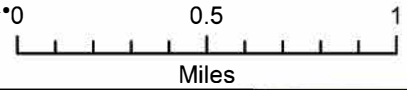


Northwest Geomatics, LTD, Source Intermap, INCREMENT P, NRCA (Kong), Esri Korea, Esri (Thailand), contributors, and the GIS User Community

ITEM:2 PROPOSED TUMWATER FALLS FISH HATCHERY EASEMENT EXCHANGE

COUNTY: THURSTON

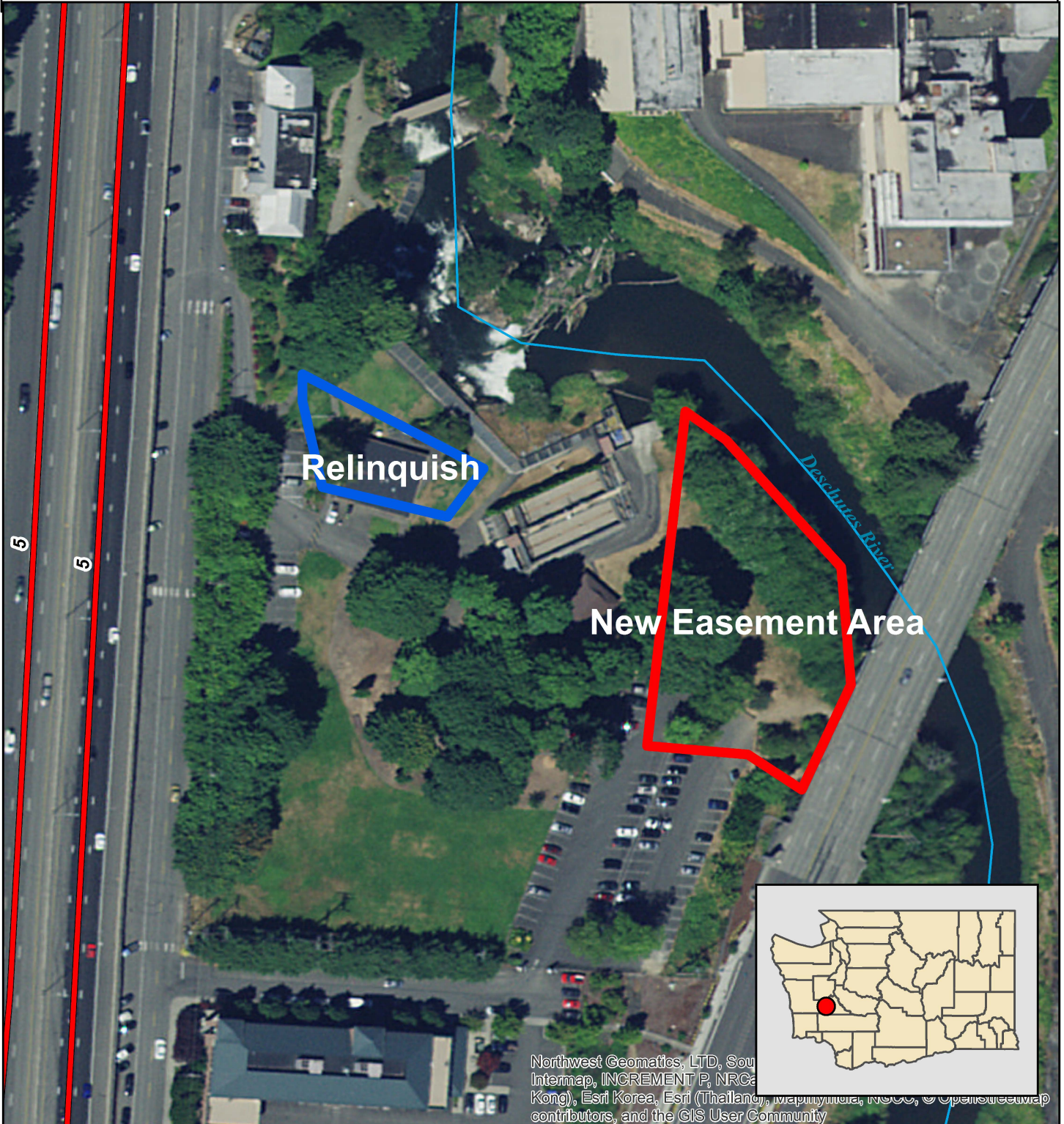
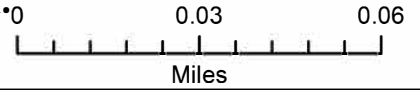
LEGAL: SECTION 26, TOWNSHIP 18N, RANGE 2W, W.M. 0



ITEM:2 PROPOSED TUMWATER FALLS FISH HATCHERY EASEMENT EXCHANGE

COUNTY: THURSTON

LEGAL: SECTION 26, TOWNSHIP 18N, RANGE 2W, W.M. 0



Northwest Geomatics, LTD, Source: Intermap, INCREMENT P, NRCA, Esri (Japan), Esri (Korea), Esri (Thailand), Intermap, INC, © OpenStreetMap contributors, and the GIS User Community