

Landowner Hunting Permits (LHP)

Presented by:

Anis Aoude (Game Division Manager) &
Ciera Strickland (Private Lands Access Program Manager)

December 14-15, 2018
Commission Meeting



Washington Department of
FISH and WILDLIFE

History of the LHP Program

- Began as a way to provide public access to larger private land parcels that were otherwise inaccessible by the general public
- New way to incentivize landowners to allow public hunting access
- Conflict mitigation was a secondary benefit

Private Lands Program - Overview

- The LHP program is just one of the access opportunities under the broader Private Lands Program
- Other opportunities:
 - Feel Free to Hunt
 - Register to Hunt
 - Hunt by Written Permission
 - Hunt by Reservation (Online)

Program Statistics for the 2017-18 Hunting Seasons

Feel Free to Hunt		Hunt by Reservation		Register to Hunt		Hunt by Written Permission		Landowner Hunt Permit	
Cooperators	Acres	Cooperators	Acres	Cooperators	Acres	Cooperators	Acres	Cooperators	Acres
172	491,564	93	101,915	16	17,325	254	624,895	5	116,515

Statewide Totals	
Cooperators	Acres
540	1,352,214

Total Acreage Statewide: 1.35 million

Percentage LHP: 8.61% of total acreage

Most popular program: HBWP (47% of our landowners are in this program)

Most Acreage: Grant County (including LHP), Adams County (not including LHP)

Most Cooperators: Whitman County (No LHP Properties)

Region with the most access and participating Cooperators: Region 1

Background Information

- Historically, there has never been more than 7 properties in the LHP program statewide. Currently, there are only 5
- LHP portion of Commission policy C-6002 was added in 2005
- Program requirements are vague and open to interpretation. This has led to the inconsistencies within the LHP program
- These inconsistencies do not go unnoticed by the public

Benefits of the Current Program

- Offset wildlife damage claims that otherwise would require large payments
- Certain LHPs provide youth, disabled and first hunt opportunities
- Some LHPs provide general season hunting opportunities through other Private Lands Access Programs
- Provide opportunities to landowners to make a profit to offset costs associated with public access and wildlife management, though some LHPs are non-profits
- Certain LHP properties still provide an emphasis on habitat

Complications of the Current Program

- All LHP properties are managed differently
- All LHP properties are maintained for different reasons
- Some LHP properties are the reason for considerable acreage losses in our other programs (Feel Free to Hunt, Register to Hunt, Hunt by Written Permission and Hunt by Reservation)
- Majority of public does not benefit from the LHP program
- WDFW Staff experience difficulty when trying to manage and coordinate this program

Acreage Losses – Asotin & Garfield Co.

LHP (Bennett) ~22,500 acres lost			
HBWP		FFTH	
# Cooperators	Acres	# Cooperators	Acres
10	18,055	5	4,453

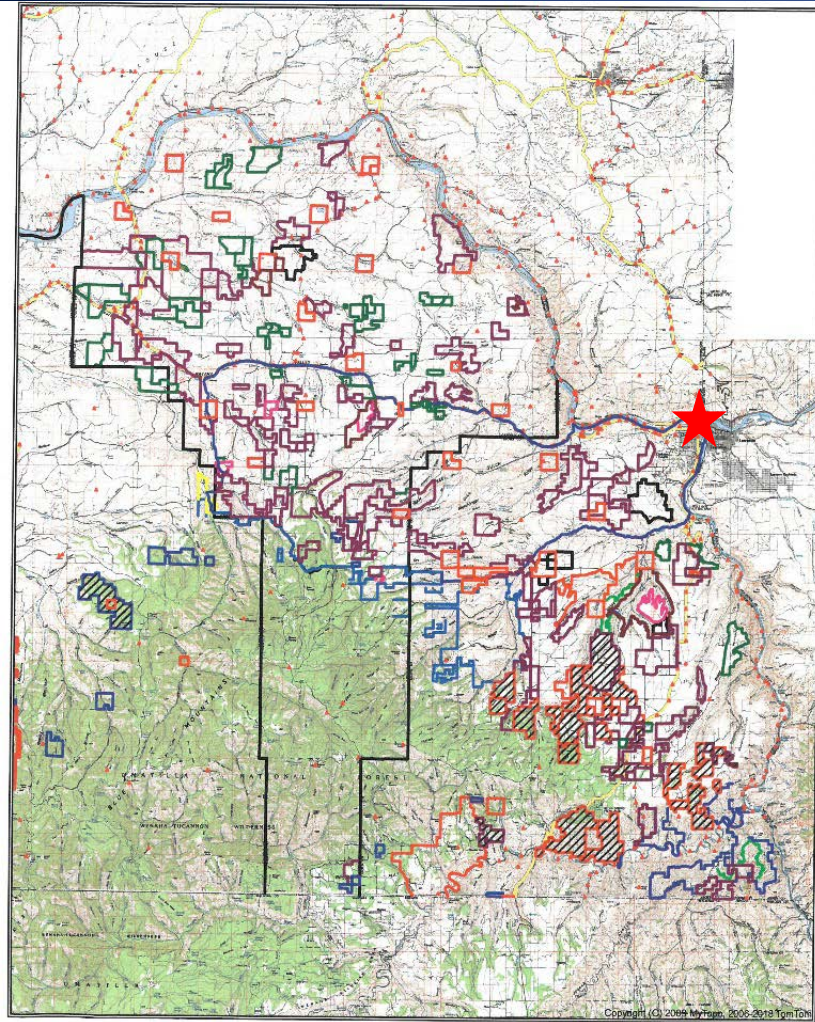
LHP (4-0) ~7,200 acres lost			
HBWP		FFTH	
# Cooperators	Acres	# Cooperators	Acres
4	5,832	2	1,317

Total acreage under Bennett Contract: 9,835 acres

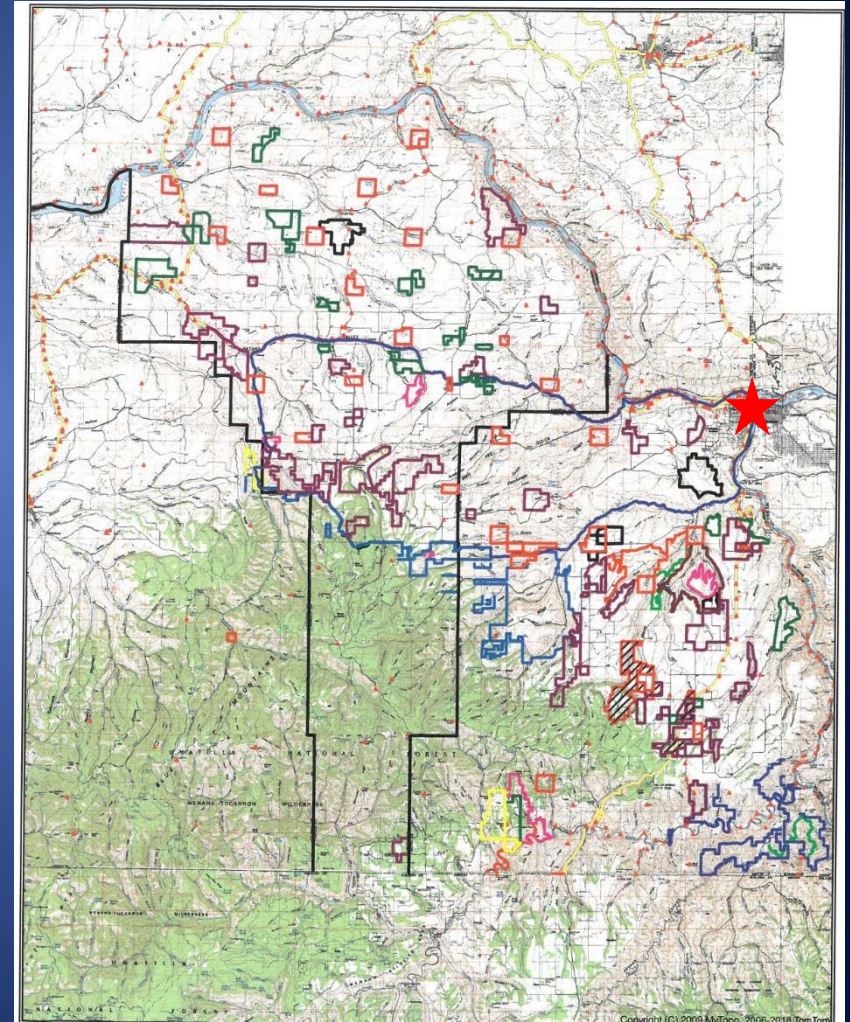
Total acreage under previous 4-0 Ranch Contract: 10,928 acres

Acreage Losses - Mapped

Prior to LHP



After LHP



* Also includes acreage losses for mapping requirements

★ Point of Reference – Clarkston WA/Lewiston ID

LHP Permit Allocation

- Antlerless deer or elk - minimum of 50% allocated by WDFW
- Buck deer or bull elk - minimum of 25% allocated by WDFW
- Cooperators must allow equal hunting opportunity whether the hunter received a permit allocated by the Department or the cooperator
- Cooperators wishing to sell access associated with the landowner's portion of the special hunting permits must waive all claims for wildlife damage that may occur on their lands

Current Permits for WDFW

	Total Acreage	Permits for WDFW	Permits/Raffles for the LHP	How are they distributed?	General Season hunting? (Y/N)	How is general season allowed, if applicable?
Pine Mountain Ranch	5,500	6	6	Manager distributes	Yes	Mostly Master Hunters to help with elk damage
Blackrock Ranches	7,162	4	8	Manager distributes. Friend and Family may occasionally sell one to public.	Yes	Through the owner - similar to HBWP. Priority to kids but occasionally will allow parents/other youth to harvest.
Silver Dollar Association	58,009	16	32	Manager distributes. Group of Landowners - each ownership gets allotment of permits. Can either be sold, or given to friends and family. Hunters assigned to ownerships (for WDFW Permits).	Yes	HBWP. Priority to kids but occasionally will allow parents/other youth to harvest.
CPWMA	3,974	1	13/11	Raffle 9 cow and 2 bull/Manager distributes 1 cow and 1 bull to landowners and group members by lottery	Yes	HBWP. Opportunity is allotted by lottery.
Buckrun	41,870	10	40/10	Raffle/Manager distributes. Money for each raffle ticket is retained by Buckrun. Public Antlerless Permits provided through WDFW.	No - also a burden on enforcement officers (constant call to come get trespassers).	No
Total	116,515	37	99/21			

Purpose Statement

- Given the current challenges with the LHP program, we are proposing to review the program to better incentivize private landowners, increase public access, and standardize implementation
- Any changes to the program would need to be addressed in current policy (C-6002)

Timeline

- December 2018 – Commission Meeting
- Spring 2019 – Public/Stakeholder Outreach
- Early Summer 2019 – Formation of formal program proposals
- Summer 2019 – Policy and Document Development/Revisions
- Fall 2019 - Final Adoption of LHP Program Revisions

Questions?

