



**PUGET SOUND COMMERCIAL SALMON
FISHERIES HOTLINE
(360) 902-2500**

2017-08-update with maps
Week 36

Tuesday September 5th at 6:45 p.m.
[read by: Kendall Henry]

Area 7 and 7A sockeye and pink directed fisheries are controlled by the Fraser River Panel and are not posted on this hotline. Fishers should call the **National Marine Fisheries Service Hotline at 1-800-662-9825** to get opening information on Fraser Panel fisheries. Fishers are reminded that a department issued **Fish Friendly certification card is required** to participate in any Area 7 or 7A commercial salmon fisheries.

For the week beginning Sunday September 3rd all areas are closed except as follows:

Areas 7 and 7A will be open in the following locations only to target Atlantic salmon:

In Area 7, from the south tip of Lummi Island at Carter Point westerly to the northern point of Sinclair Island, to the most north western point of Sinclair Island, then to Towhead Island, from there following 1000' of the western shore of Cypress Island to Strawberry Island then to Fidalgo Head and bounded to the East by the 7/7B line; In Area 7, those waters within the outermost headlands of Eagle Cove, Mulno Cove, and North Bay on San Juan Island and Davis Bay on Lopez island; and in Area 7A within the outermost headlands of Birch Bay.

Will be open to:

Gillnets using 5-inch minimum and 6.5-inch maximum mesh size:

8:15 AM to 11:59 PM daily Wednesday, September 6th through Saturday September 9th.

Gillnets may only retain Atlantic salmon and all other species must be released.

Beach seines with nets not to exceed 990 feet in length and 200 meshes in depth using minimum 3-inch and maximum 4-inch mesh:

5 AM to 9 PM daily Wednesday, September 6th through Saturday September 9th.

Beach seines may only retain Atlantic salmon and all other species must be released.

Please note that all Area 7 exclusion zones and in-season area restrictions still apply.

Areas 7B (Bellingham Bay) and 7C (Samish Bay) will be open to:

Gillnets using 5-inch minimum mesh size:

7 AM Sunday, September 3rd to 7 AM Friday, September 8th. Must release all sockeye.

Purse seines with a 5 inch strip:

Wednesday September 6th from 6 AM to 8 PM.

Brailing is required and purse seines must release all sockeye.

If you suspect an error in this message or if you have questions, please contact Kendall Henry, the Puget Sound Commercial Salmon Fisheries Manager, at 360-902-2717.

<http://wdfw.wa.gov/fishing/commercial/salmon/>

Area 9A (Port Gamble Bay) will be open to:

Skiff gillnets with nets not to exceed 600 feet in length and 60 meshes in depth using 5-inch minimum mesh, is open continuously through 7 PM Saturday, November 4th. All Chinook and chum must be released by cutting the ensnaring mesh.

Area 10 Limited Participation Pink Fishery:

In early July, all Puget Sound Commercial permit holders were mailed a limited participation entry form with information on how to apply to these fisheries. The department has contacted the selected vessels for the fishery. In cases where the selected vessel has chosen not to participate, we have contacted alternates. Department observers are required on board all vessels at all times while engaged in fishery. The fishery will close when 400 Chinook mortalities are reached.

Pink seasonal closure: Area 10 is closed east of a line from West Point extending west to the closest mid-channel buoy then true through Pt. Wells until reaching latitude 47°44'50.0" N, then directly east to the shoreline. Area 10 is also closed to purse seines within 500' of the eastern shore north of 47°44'50.0" N.

Purse seines:

Limited to boats selected for the limited participation fishery only.

7 AM to 7 PM. Tuesday, September 5th.

7 AM to 7 PM. Thursday, September 7th.

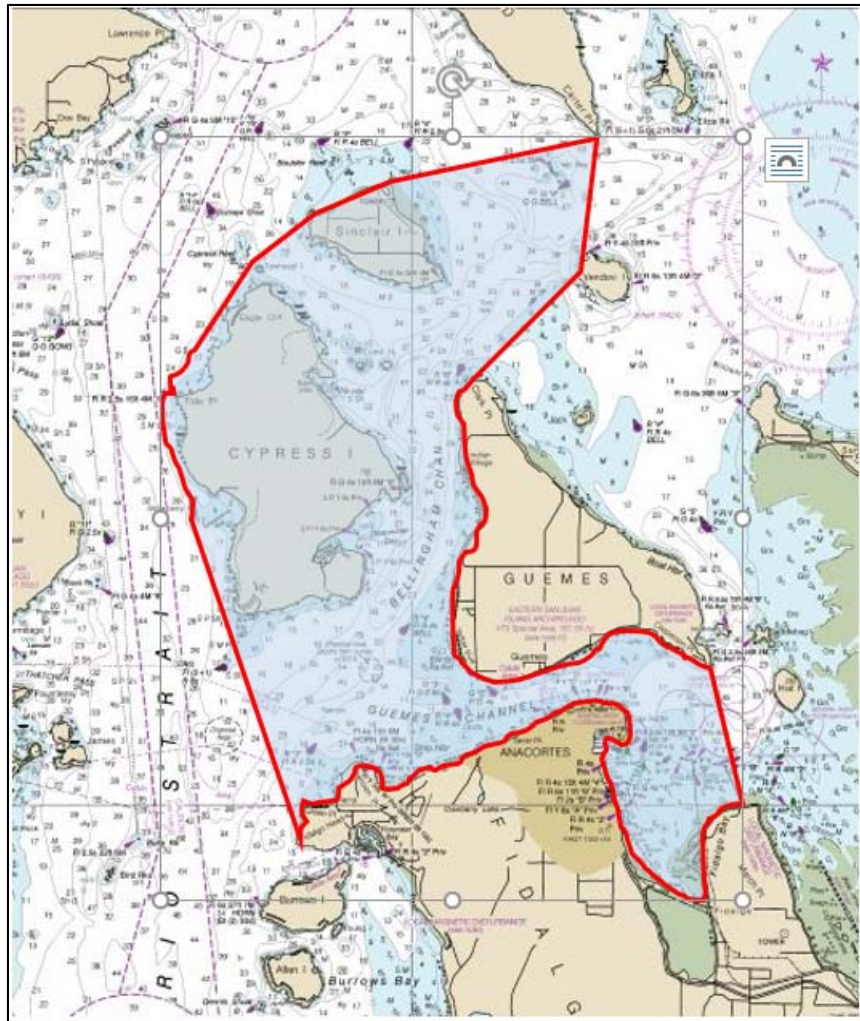
Purse seines must release Chinook, chum, sockeye, and coho. Brailing or rolling wedge and recovery boxes are required and must be operational at all times.

Area 12A (Quilcene Bay) will be open to:

Beach seines with nets not to exceed 990 feet in length and 200 meshes in depth using minimum 3-inch and maximum 4-inch mesh:

7 AM to 7 PM daily Monday September, 4th through Friday, September 8th.

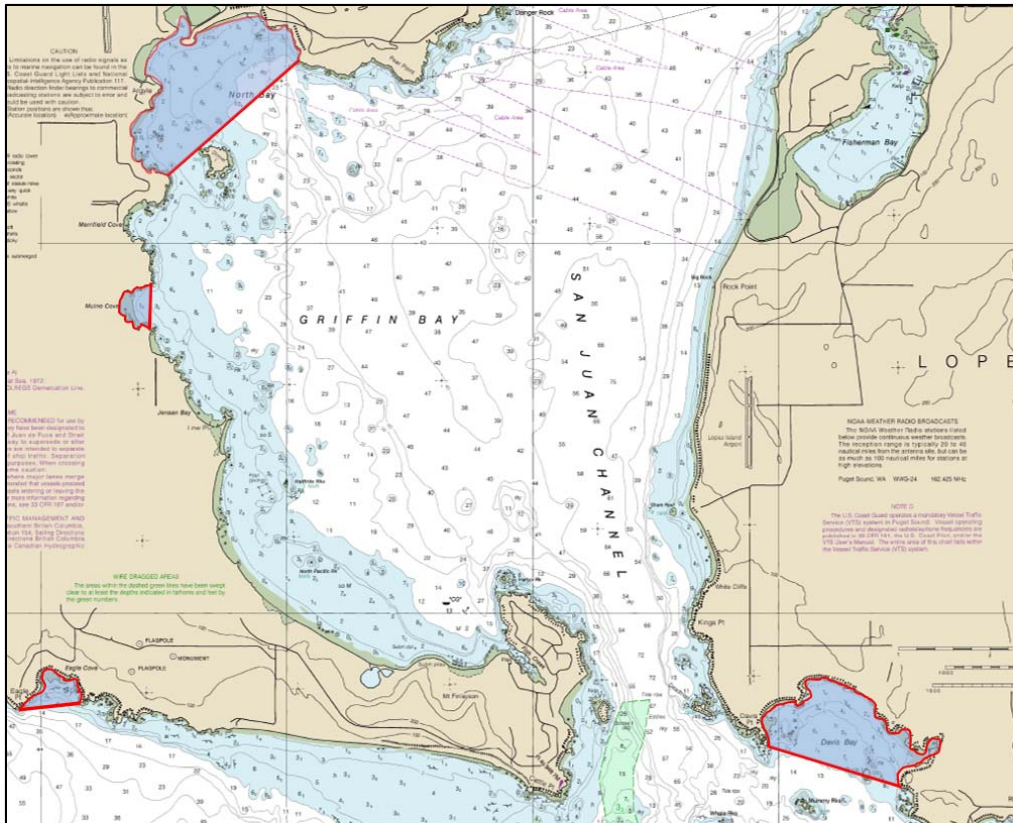
Beach seines may only retain coho.



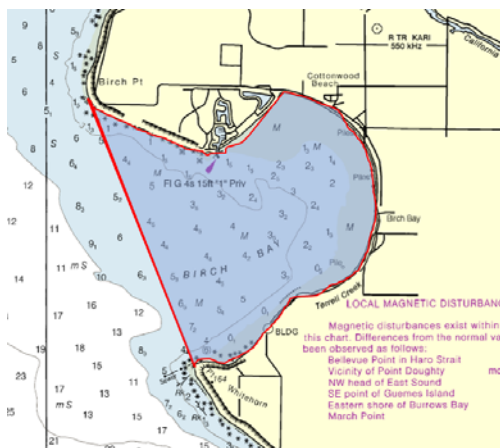
In Area 7, from the south tip of Lummi Island at Carter Point westerly to the northern point of Sinclair Island, to the most north western point of Sinclair Island, then to Towhead Island, from there following 1000' of the western shore of Cypress Island to Strawberry Island then to Fidalgo Head and bounded to the East by the 7/7B line.

If you suspect an error in this message or if you have questions, please contact Kendall Henry, the Puget Sound Commercial Salmon Fisheries Manager, at 360-902-2717.

<http://wdfw.wa.gov/fishing/commercial/salmon/>



In Area 7, those waters within the outermost headlands of Eagle Cove, Mulno Cove, and North Bay on San Juan Island and Davis Bay on Lopez island.



In Area 7A within the outermost headlands of Birch Bay.

If you suspect an error in this message or if you have questions, please contact Kendall Henry, the Puget Sound Commercial Salmon Fisheries Manager, at 360-902-2717.

<http://wdfw.wa.gov/fishing/commercial/salmon/>