



**PUGET SOUND COMMERCIAL SALMON
FISHERIES HOTLINE
(360) 902-2500**

2017-09

Week 37

Friday September 8th at 4:30 p.m.

[read by: Kwasi Addae]

Area 7 and 7A sockeye and pink directed fisheries are controlled by the Fraser River Panel and are not posted on this hotline. Fishers should call the **National Marine Fisheries Service Hotline at 1-800-662-9825** to get opening information on Fraser Panel fisheries. Fishers are reminded that a department issued **Fish Friendly certification card is required** to participate in any Area 7 or 7A commercial salmon fisheries.

For the week beginning Sunday September 10th all areas are closed except as follows:

Areas 7 and 7A will be open in the following locations only to target Atlantic salmon:

In Area 7, from the south tip of Lummi Island at Carter Point westerly to the northern point of Sinclair Island, to the most north western point of Sinclair Island, then to Towhead Island, from there following 1000' of the western shore of Cypress Island to Strawberry Island then to Fidalgo Head and bounded to the East by the 7/7B line; Additionally in Area 7, those waters within the outermost headlands of Eagle Cove, Mulno Cove, and North Bay on San Juan Island and Davis Bay on Lopez island; and in Area 7A within the outermost headlands of Birch Bay.

Will be open to:

Gillnets using 5-inch minimum and 6.5-inch maximum mesh size:

8:15 AM to 11:59 PM daily Sunday, September 10th through Tuesday September 12th.

Gillnets shall only retain Atlantic salmon and all other species must be released.

Beach seines with nets not to exceed 990 feet in length and 200 meshes in depth using minimum 3-inch and maximum 4-inch mesh:

5 AM to 9 PM daily Sunday, September 10th through Tuesday September 12th.

Beach seines shall only retain Atlantic salmon and all other species must be released.

Please note that all Area 7 exclusion zones and in-season area restrictions still apply.

Areas 7B (Bellingham Bay) and 7C (Samish Bay) will be open to:

Gillnets using 5-inch minimum mesh size:

7 AM Sunday, September 10th to 7 AM Friday, September 15th. Must release all sockeye.

If you suspect an error in this message or if you have questions, please contact Kendall Henry, the Puget Sound Commercial Salmon Fisheries Manager, at 360-902-2717.

<http://wdfw.wa.gov/fishing/commercial/salmon/>

Purse seines with a 5 inch strip:

7AM to 7PM, Monday, September 11th

7AM to 7PM, Wednesday, September 13th

7AM to 7PM, Friday, September 15th

Brailing is required and purse seines must release all sockeye.

Area 9A (Port Gamble Bay) will be open to:

Skiff gillnets with nets not to exceed 600 feet in length and 60 meshes in depth using 5-inch minimum mesh, is open continuously through 7 PM Saturday, November 4th. All Chinook and chum must be released by cutting the ensnaring mesh.

Area 12A (Quilcene Bay) will be open to:

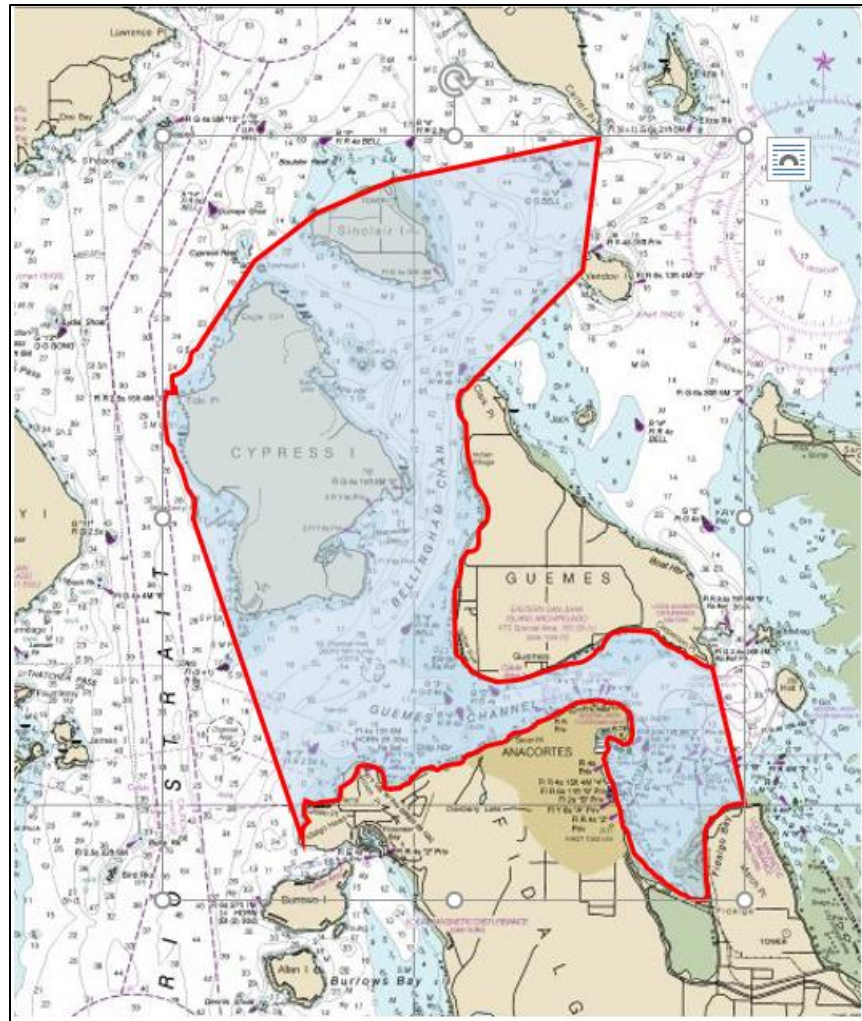
Beach seines with nets not to exceed 990 feet in length and 200 meshes in depth using minimum 3-inch and maximum 4-inch mesh:

7 AM to 7 PM daily Monday September, 11th through Friday, September 15th.

Beach seines may only retain coho.

If you suspect an error in this message or if you have questions, please contact Kendall Henry, the Puget Sound Commercial Salmon Fisheries Manager, at 360-902-2717.

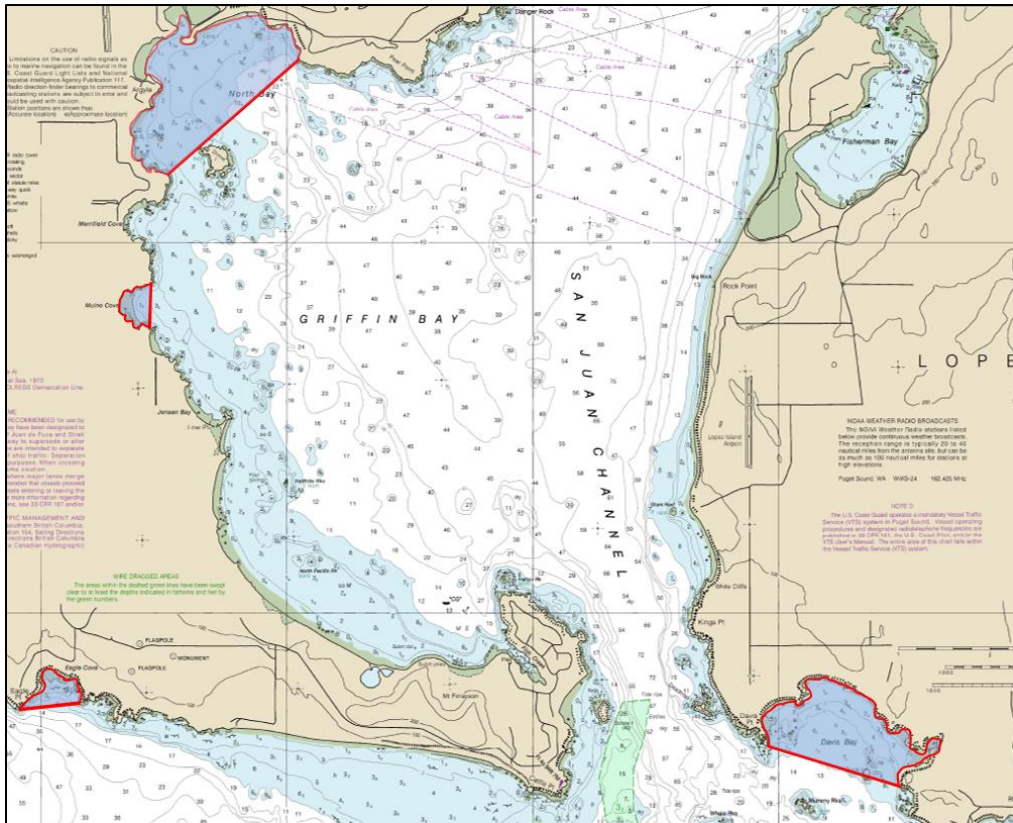
<http://wdfw.wa.gov/fishing/commercial/salmon/>



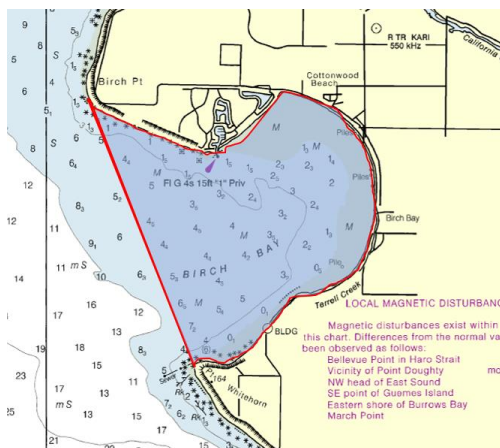
In Area 7, from the south tip of Lummi Island at Carter Point westerly to the northern point of Sinclair Island, to the most north western point of Sinclair Island, then to Towhead Island, from there following 1000' of the western shore of Cypress Island to Strawberry Island then to Fidalgo Head and bounded to the East by the 7/7B line.

If you suspect an error in this message or if you have questions, please contact Kendall Henry, the Puget Sound Commercial Salmon Fisheries Manager, at 360-902-2717.

<http://wdfw.wa.gov/fishing/commercial/salmon/>



In Area 7, those waters within the outermost headlands of Eagle Cove, Mulno Cove, and North Bay on San Juan Island and Davis Bay on Lopez island.



In Area 7A within the outermost headlands of Birch Bay.

If you suspect an error in this message or if you have questions, please contact Kendall Henry, the Puget Sound Commercial Salmon Fisheries Manager, at 360-902-2717.

<http://wdfw.wa.gov/fishing/commercial/salmon/>