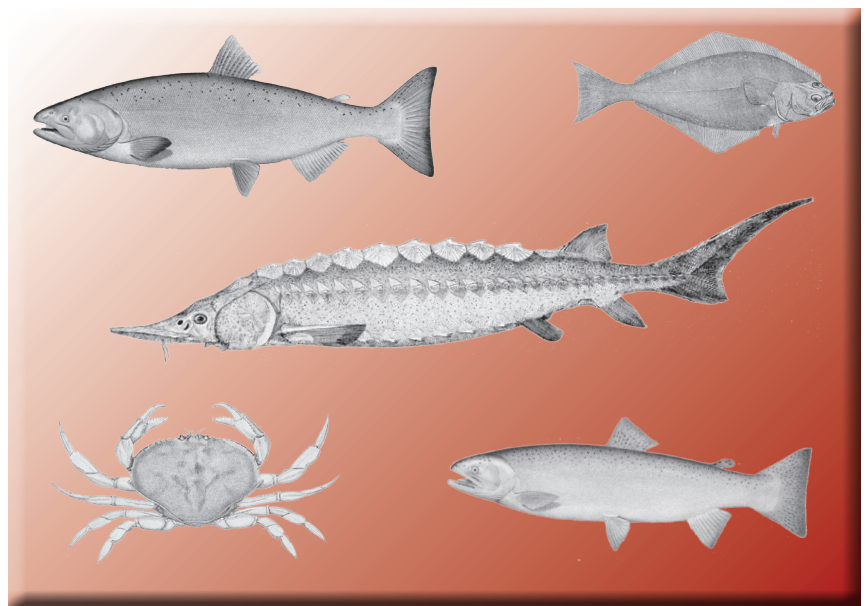


Washington State Sport Catch Report 2012



by Eric Kraig



*Washington Department of
Fish and Wildlife
Fish Program
Science Division*

WASHINGTON STATE SPORT CATCH REPORT 2012

by

Eric Kraig

State of Washington
Jay Inslee, Governor

Washington State Department of Fish and Wildlife
Jim Unsworth, Director

Fish Program
Guy Norman, Assistant Director

Department of Fish and Wildlife
Fish Science Division
600 Capitol Way N
Olympia, Washington 98501



August 2015



ACKNOWLEDGEMENTS

Many Department of Fish and Wildlife biologists and program staff contributed to the compilation and editing of this report. Thanks go to the staff in Licensing, Information Systems, Support Services Unit, and Fish Management. Special thanks are due to Dan Ayres, Mark Baltzell, Wendy Beeghley, Lynette Bounds, David Bramwell, Joe Hymer, Olaf Langness, Bob Leland, Glen Mendel, Mark O'Toole, Maria Parnel, Euna Parse, Steve Thiesfeld, Camille Speck, and Karla Weiss.

TABLE OF CONTENTS

List of Tables	iii
Introduction	1
Sport Licenses	5
Technical Data	7
Salmon	11
Map of Salmon Catch Record Card Areas	12
Description of Salmon Catch Record Card Areas	13
Sturgeon	47
Map of Sturgeon Catch Record Card Areas	49
Description of Sturgeon Catch Record Card Areas	50
Steelhead	55
Marine Fish	75
Shellfish	79

LIST OF TABLES

SPORT LICENSES

Table 1.	Number and Value of Sport Fishing Licenses Sold in Washington in the 2012-2013 Fishing Year.....	6
----------	--	---

TECHNICAL DATA

Table 2.	Number of Catch Record Cards Issued 1971-2012	8
Table 3.	2012-2013 Catch Record Card Technical Data.....	9

SALMON

Table 4.	Annual Sport Salmon Catch, 1971 – 2012	14
Table 5.	2012-2013 Total Sport Salmon Catch	15
Table 6.	2012 Sport Salmon Marine Catch, Area 1 – Ilwaco: Ocean	16
Table 7.	2012-2013 Sport Salmon Marine Catch, Area 1 – Ilwaco: River	17
Table 8.	2012 Sport Salmon Marine Catch, Area 2 – Westport	18
Table 9.	2012-2013 Sport Salmon Marine Catch, Area 2-1 – Willapa Bay	18
Table 10.	2012-2013 Sport Salmon Marine Catch, Area 2-2 – Grays Harbor	19
Table 11.	2012 Sport Salmon Marine Catch, Area 3 – LaPush.....	19
Table 12.	2012 Sport Salmon Marine Catch, Area 4 – Neah Bay	20
Table 13.	2012-2013 Sport Salmon Marine Catch, Area 5 – Sekiu – Pillar Point	21
Table 14.	2012-2013 Sport Salmon Marine Catch, Area 6 – East Juan de Fuca Strait	21
Table 15.	2012-2013 Sport Salmon Marine Catch, Area 7 – San Juan Islands	22
Table 16.	2012-2013 Sport Salmon Marine Catch, Area 8-1 – Deception Pass / Hope Island	22
Table 17.	2012-2013 Sport Salmon Marine Catch, Area 8-2 – Port Susan / Port Gardner	23
Table 18.	2012-2013 Sport Salmon Marine Catch, Area 9 – Admiralty Inlet	23
Table 19.	2012-2013 Sport Salmon Marine Catch, Area 10 – Seattle / Bremerton	24
Table 20.	2012-2013 Sport Salmon Marine Catch, Area 11 – Tacoma / Vashon Island.....	24
Table 21.	2012-2013 Sport Salmon Marine Catch, Area 12 – Hood Canal	25
Table 22.	2012-2013 Sport Salmon Marine Catch, Area 13 – South Puget Sound	25
Table 23.	2012-2013 Sport Freshwater Catch, By Area and Month	26
Table 24.	2012-2013 Washington Sport Salmon Fishing, By Residence	43
Table 25.	2012-2013 Frequency Distribution of Salmon Cards and Catch	44
Table 26.	2012-2013 Inventory of Salmon Catch Record Cards Received	45

LIST OF TABLES

STURGEON

Table 27.	2012-2013 Sport Sturgeon Catch.....	50
Table 28.	2012-2013 Sport Sturgeon Fishing, By Residence	53
Table 29.	2012-2013 Frequency Distribution of Sturgeon Cards and Catch	54
Table 30.	2012-2013 Inventory of Sturgeon Catch Record Cards.....	54

STEELHEAD

Table 31.	2012-2013 Sport Steelhead Catch.....	56
Table 32.	2012-2013 Sport Steelhead Fishing, By Residence	72
Table 33.	2012-2013 Frequency Distribution of Steelhead Cards and Catch	73
Table 34.	2012-2013 Inventory of Steelhead Catch Record Cards Received	74

MARINE FISH

Table 35.	2012 Coastal Sport Bottomfish Catch.....	76
Table 36.	2012 Washington Recreational Pacific Halibut Catch.....	77
Table 37.	2012 Sport Bottomfish Catch by Boat-Based Anglers in Puget Sound	78

SHELLFISH

Table 38.	2012-2013 Seasonal Summary of Sport Razor Clam Digging on Ocean Beaches	80
Table 39.	2012 Clam and Oyster Recreational Use and Harvest Estimates from Intertidal Areas East of Dungeness Spit	81
Table 40.	2012 Hood Canal Sport Shrimp Fishery	82
Table 41.	2012 Puget Sound Sport Shrimp Fishery.....	82
Table 42.	2012-2013 Sport Dungeness Crab Catch.....	82

INTRODUCTION

The Washington State Sport Catch Report was first published in 1967. The report originally provided salmon catch estimates, which were and still are based on data from catch record cards (punch cards). In 1975, marine fish sport harvest estimates were added to the report, followed by shellfish estimates in 1976. Marine fish and intertidal shellfish sport harvest estimates are based on field and creel surveys. In 1994, with the merger of the departments of Fisheries and Wildlife, steelhead sport harvest estimates were added to the report. Now, catch record card data are collected for salmon, sturgeon, steelhead, Dungeness crab and halibut. The card data is supplemented with field or creel survey data or telephone surveys where available to improve recreational harvest estimate accuracy. The sport harvest estimates for salmon, steelhead, sturgeon, marine fish and shellfish are produced at varying times of each year. For this reason, coupled with an increase in the number of catch record cards issued, budget, and staffing constraints, the 2012 edition of the Washington State Sport Catch Report is being published in August 2015.

The 2012 sport estimates reflect harvest from April 1, 2012, through March 31, 2013. Historically, salmon, sturgeon, halibut, marine fish and shellfish estimates were made on a calendar year basis from January 1 through December 31. Steelhead estimates were summarized from May 1 through the next April 30 to better capture the results of steelhead “run years”. Effective January 1, 1999, the sport license system adopted an April 1 to March 31 license year for all species. To adjust to the new reporting time frames, the 1999 sport report included 15 months of salmon and sturgeon catch and 11 months of steelhead catch (May 1, 1999 – March 31, 2000). When comparing past years’ sport harvest estimate tables, please note the changes in the license structure and reporting year as described above.

SPORT LICENSES AND CATCH RECORD CARDS

In 2012, the following licenses and catch record cards were required to fish in Washington:

- Saltwater license: Required for saltwater fishing, for all anglers aged sixteen and over. Available for residents, resident seniors (70 and older), and non-residents. Catch record cards required for salmon, steelhead, sturgeon and halibut, for anglers of all ages.
- Freshwater license: Required for freshwater fishing, for all anglers aged sixteen and over. Available for residents, resident seniors (70 and older), and non-residents. Catch record cards required for salmon, steelhead and sturgeon, for anglers of all ages.
- Shellfish/seaweed license: Required for harvesters aged sixteen and over. Available for residents, resident seniors (70 and older), and non-residents. Allows the holder to harvest clams, mussels, oysters, shrimp, crab, squid, other shellfish, and seaweed. In addition, a Puget Sound crab endorsement and catch record card was required to harvest Dungeness crab in Marine Areas 5-13.
- Combination license: Allows anglers to fish in both saltwater and freshwater and to harvest shellfish and seaweed. Available for both residents and non-residents aged fifteen and over.

Fish catch record cards were required for salmon, steelhead, sturgeon and halibut. Each species group could be issued as a separate card, or included together on one card. Separate catch record cards were required for recording Dungeness crab in Puget Sound. Separate crab cards were required for the summer and fall/winter seasons.

In 2001 WDFW implemented the Washington Interactive Licensing Data (WILD) system to electronically capture recreational license issuance information at the point of sale. The catch record card remained the same paper document distributed by sport license vendors, but demographic data about persons receiving the cards became available almost immediately.

Table 1 lists license sales for the license year which ran from April 1, 2012 through March 31, 2013. Table 2 provides counts for the numbers of fish and crab catch cards issued going back to 1971. Table 3 shows the return rate, expansion factor, and non-response bias correction factors for the 2012-13 cards.

METHODS

Catch record card returns are used to estimate sport salmon catch in marine and freshwater areas. For some areas, the catch cards numbers are replaced with estimates based on creel surveys. In marine areas, creel estimates were used in Areas 1-4 (not including Willapa bay or Grays Harbor), and for many of the Puget Sound fisheries including the summer months in Area 5, 9, 10 and 11, and winter blackmouth fisheries in Area 7, 8-1, 8-2, 9, 10, and 11.

The sport catch record card is used to produce the annual sport harvest estimates for salmon, steelhead, sturgeon, and halibut. Anglers holding in-sample cards are sent reminders to return their CRC's. Harvest summed from returned in-sample cards is expanded to account for the un-sampled cards (75%) and unreturned cards. A bias adjustment factor is applied in some areas and species to account for successful anglers returning cards at a higher rate than unsuccessful anglers. Creel survey data are substituted for CRC data when available. The preliminary sport harvest estimates are sent to WDFW and Tribal biologists statewide for review. After review comments are compiled and investigated, final sport harvest estimates are prepared and distributed.

The methods used produce estimates of sport harvest, which have some level of uncertainty. This uncertainty, or variance, is estimated and expressed with confidence levels, which are not provided in this report. These variance estimates are available upon request.

OCEAN CATCH DATA

Sport catch data from coastal areas 1 – 4 were reported using “port sampling” (creel survey) catch estimates. Such estimates were derived by monitoring daily landings at four coastal ports: Ilwaco, Westport, La Push, and Neah Bay. Catch is reported in the area where the fish was caught and not the area where it was landed.

STATISTICAL MONTHS AND STATISTICAL WEEKS

Some catch data (i.e. salmon and bottomfish) are reported using statistical months or statistical weeks. Statistical weeks (defined as Monday-Sunday) are consecutively numbered weeks beginning on January 1 and continuing through week 53 or 54, ending on December 31. The first and last weeks of any year usually contain less than 7 days. Statistical months are made up of a set number of statistical weeks, which approximate calendar months but do not coincide with calendar month start and end dates. For example, in 2012, the statistical month of January begins January 1 and ends January 30 and the statistical month of February starts on January 31 and ends February 27. Due to the differences between calendar and statistical months, some catch may be reported during what appears to be a closed period.

SALMON

Annual sport salmon catch estimates for 1971 through 2012 are shown in Table 4. Between April 1, 2012, and March 31, 2013 a total of 294,823 salmon were caught in marine areas, and 285,247 salmon were caught in freshwater. The marine totals by species, as shown in Table 5, are: 81,748 chinook; 208,792 coho; 3,492 chum; 163 pink; 58 sockeye; and 570 jacks (all species combined). Freshwater species breakdowns are: 117,891 chinook; 74,973 coho; 10,332 chum; 0 pink; 61,395 sockeye; 25,280 jacks (all species combined).

Catch record card returns are used to estimate sport salmon catch in marine and freshwater areas. For some areas, the catch cards numbers are replaced with estimates based on creel surveys. In marine areas, creel estimates were used in Areas 1-4 (not including Willapa bay or Grays Harbor), and for many of the Puget Sound fisheries including the summer months in Area 5, 9, 10 and 11, and winter blackmouth fisheries in Area 7, 8-1, 8-2, 9, 10, and 11.

STURGEON

On the new combined sport catch record card, sturgeon fishers were required to record their catch statewide. The total sport harvest for 2012, based on creel surveys and catch record card returns, was 5,368 fish. Of this total, 4,822 white sturgeon came from the Columbia River and Snake River systems combined (Table 27). Catch from coastal rivers (including Willapa Bay and Grays Harbor) totaled 193 white sturgeon. Puget Sound rivers and marine areas produced 88 white sturgeon. For monthly catch information see Table 27.

STEELHEAD

Harvest estimates for sport-caught summer and winter steelhead are based on catch record card returns. Steelhead caught during the months of May through October are considered “summer-runs,” designated S. Steelhead caught from November through April are considered “winter-runs,” designated W, with the exception of steelhead caught above Bonneville Dam on the Columbia River, where all steelhead are considered “summer-runs,” because of run and spawn timing.

Table 31 presents steelhead sport harvest estimates for the 2012-2013 season geographically by stream and river system. Monthly estimate totals are given for marked and unmarked steelhead.

MARINE FISH

Marine fish are those species of fish which live their entire lives in salt water. There are four general groups of marine fish for management purposes: 1) bottomfish, which are species such as rockfish, lingcod and most species of sole and flounder; 2) forage fish, which are small, schooling fish such as herring and smelt; 3) tunas and mackerels; 4) Pacific halibut.

The recreational catch of bottomfish and halibut in ocean waters (Catch Areas 1-4) is estimated from marine surveys (Table 35 and 36). The estimates are made for each of the four main coastal fishing areas: Ilwaco, Westport, La Push and Neah Bay.

The Puget Sound (Catch Areas 5-13) catch of bottomfish, excluding halibut, is estimated using a combination of two surveys: a creel survey of anglers to determine the catch rate and species composition and a phone survey of licensed anglers to determine total fishing effort. These estimates are shown in Table 37. The recreational catch of forage fish is not routinely monitored and no harvest estimate is available.

SHELLFISH

Razor clam harvest on the coastal beaches is summarized in Table 38. During the fall of 2012 and the spring of 2013 418,999 digging trips resulted in a harvest of 6,078,109 clams, for an average of 14.7 clams per trip.

Puget Sound recreational clam and oyster harvest estimates are shown in Table 39. Harvest totals for Manila and native littleneck clams, butter clams, cockles, softshell clams, horse clams, geoducks and oysters are shown for public access beaches. Estimates show 111,328 sport harvester trips gathered 377,066 total pounds of clams and 741,757 oysters in 2012 on the monitored beaches.

The Hood Canal sport shrimp fishery harvest is reported in Table 40. A total of 87,632 pounds of shrimp were caught during the six days of the season. Puget Sound shrimpers caught 44,612 pounds of shrimp between May and September. The sport crab fishery in the Puget Sound areas is summarized in Table 42. Crabbers harvested an estimated 2,054,214 pounds of Dungeness crab.

SPORT LICENSES

Table 1. Number and Value of Sport Fishing Licenses Sold in Washington.

April 1, 2012 - March 31, 2013 - License Year			
Type of License	Price	Number Sold	Value
Saltwater			
Resident	\$29.50	40,707	\$1,141,775.25
Non-Resident	\$59.75	2,794	\$161,353.50
Senior	\$8.05	16,274	\$98,457.70
Freshwater			
Resident	\$29.50	340,067	\$9,351,602.50
Non-Resident	\$84.50	12,408	\$1,023,667.50
Senior	\$7.50	38,113	\$209,632.50
Shellfish/Seaweed			
Resident	\$16.30	92,109	\$1,317,144.40
Non-Resident	\$35.00	5,931	\$195,726.00
Senior	\$10.80	16,724	\$146,052.50
Combination (Saltwater/Freshwater/Shellfish)			
Resident	\$54.25	135,149	\$7,059,654.25
Non-Resident	\$123.55	1,859	\$109,832.25
Disabled	\$10.25	13,315	\$109,832.25
Youth	\$10.25	12,418	\$101,300.65
Under 15	\$0.00	67,214	\$0.00
Short-term Combination*			
1-day Resident	\$11.35	50,676	\$473,821.45
1-day Non-Resident	\$20.15	30,828	\$559,301.05
2-day Resident	\$15.75	12,038	\$165,522.50
2-day Non-Resident	\$28.95	11,787	\$317,435.25
3-day Resident	\$19.05	11,435	\$194,966.75
3-day Non-Resident	\$35.55	14,947	\$500,943.85
Razor Clam			
Annual Resident	\$13.00	24,777	\$272,546.00
Annual Non-resident	\$20.70	2,286	\$42,748.20
3-day	\$8.60	39,438	\$260,291.40
PS Crab Endorsement			
Annual	\$8.75	159,166	\$1,312,929.75
Under 15	\$8.75	38,212	\$0.00
1-5 day	\$3.80	11,222	\$37,030.20
Charter/Guide Stamps*			
Charter Stamps	\$8.50	22,705	\$192,992.50
Guide Stamps	\$8.50	1,330	\$11,305.00
Two-Rod Endorsements			
Resident / Non-resident	\$14.80	28,151	\$399,371.50
Senior	\$6.00	4,197	\$23,083.50
Columbia River Endorsements			
Resident / Non-resident	\$8.75	179,373	\$1,479,828.00
Senior / Disabled / Youth	\$7.10	18,477	\$128,589.45
Duplicates			
Catch Cards		13,446	\$162,696.60
Licenses		17,187	\$81,518.80
Total		1,486,760	\$27,642,953.00

TECHNICAL DATA

Table 2. Number of Catch Record Cards Issued 1971-2012

Year	Salmon	Steelhead	Sturgeon
1971	541,600	145,647	
1972	536,750	153,977	
1973	568,825	165,671	
1974	562,375	154,051	
1975	576,075	no data	
1976	660,150	no data	
1977	641,050	no data	
1978	580,375	130,000	
1979	487,875	136,000	
1980	433,700	139,500	
1981	463,561	132,000	
1982	481,915	100,000	
1983	481,025	101,800	
1984	364,286	133,400	
1985	403,523	121,500	
1986	431,898	100,500	
1987	475,459	102,000	
1988	486,356	108,182	33,195
1989	509,534	106,666	35,576
1990	497,215	98,362	32,421
1991	489,394	98,328	32,396
1992	419,986	98,933	37,615
1993	447,986	94,913	43,067
1994	244,629	87,093	54,837
1995	416,707	101,303	62,572
1996	333,773	92,858	69,639
1997	331,511	68,341	76,806
1998	265,296	85,636	79,264
1999-2000	352,003	183,520	132,503
	Combined	Crab - Summer	Crab - Winter
2000-2001*	539,898		
2001-2002	827,443		
2002-2003	767,465		
2003-2004	799,326		
2004-2005	715,395		
2005-2006	686,831		
2006-2007	672,753		
2007-2008**	640,893	210,327	157,712
2008-2009	603,539	210,893	207,143
2009-2010	729,319	236,665	89,259
2010-2011	574,969	208,458	70,731
2011-2012	632,564	230,355	28,514
2012-2013	566,372	200,711	27,711

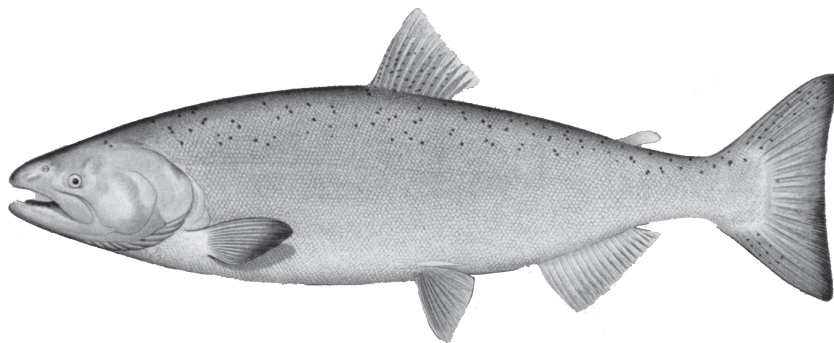
*Starting with the 2000-2001 season, all species were combined on a single card.

**Starting with the 2007-2008 season, separate cards were issued for Dungeness Crab, for both the summer season and the fall/winter season.

Table 3. 2012-2013 Catch Record Card Technical Data.

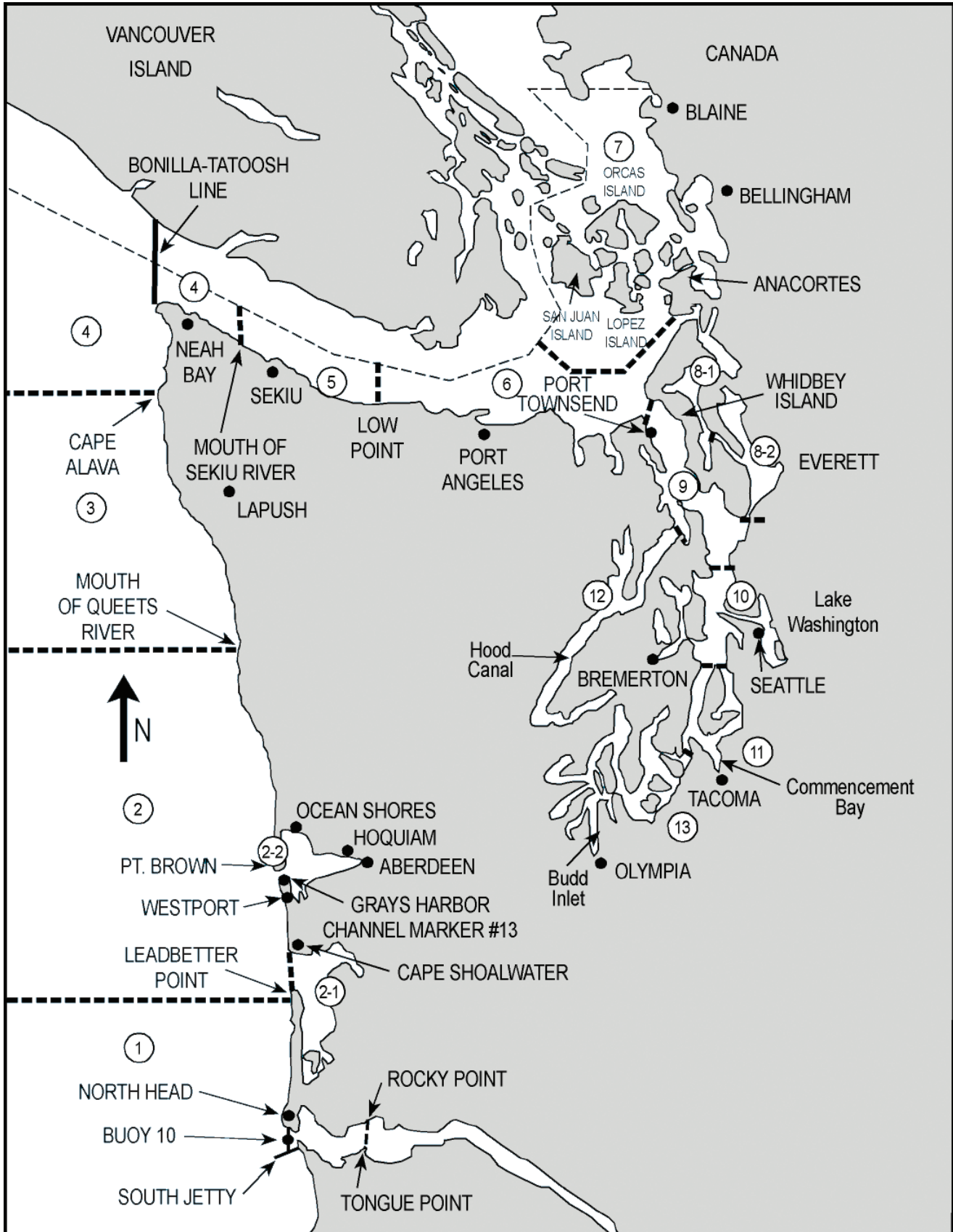
Cards Issued	566,372
In-sample cards	141,593
In-sample cards returned	64,406
Expansion Factor (Cards Issued / In-sample Returns)	8.79
Non-reporting bias correction factors	
Salmon - Marine Area 5	1.00
Salmon - Puget Sound Marine Areas	1.46
Salmon - Freshwater, Grays Harbor, Willapa Bay	1.20
Steelhead	0.98
Sturgeon	1.00

Salmon



MAP OF SALMON CATCH RECORD CARD AREAS

MARINE WATERS ONLY



1	ILWACO	West of the Buoy 10 line at the Columbia River mouth, north to Leadbetter Point.
2	WESTPORT-OCEAN SHORES	From Leadbetter Point north to the Queets River, excluding Willapa Bay and Grays Harbor.
2-1	WILLAPA BAY	East of a line from Leadbetter Point to Cape Shoalwater.
2-2	GRAYS HARBOR	East of a line from the tip of the North Jetty to exposed end of the South Jetty.
3	LA PUSH	From the Queets River north to Cape Alava.
4	NEAH BAY	From Cape Alava north and inside Juan de Fuca Strait to the Sekiu River.
5	SEKIU AND PILLAR POINT	From mouth of the Sekiu River east to Low Point, mouth of the Lyre River.
6	EAST JUAN DE FUCA STRAIT	From Low Point east to the Partridge Point - Point Wilson line north to the line from Trial Island (near Victoria B.C.) - Vessel Traffic Separation Buoy "R" - Smith Island to the Lawson Reef Buoy to Northwest Island to the Initiative 77 marker on Fidalgo Island.
7	SAN JUAN ISLANDS	All marine waters north of the Trial Island line described under Area 6 to the United States-Canada boundary.
8-1	DECEPTION PASS, SKAGIT BAY	From West Point to Reservation Head eastward through Deception Pass, including all waters of Swinomish Slough and Skagit Bay, and the portion of Saratoga Passage north and west of a line from East Point Light to light on Camano Island (Saratoga Pass Light #4FI Red 4 Sec.).
8-2	PORTS SUSAN AND GARDNER	East of East Point Light-Camano Island Light line (described in 8-1 above) and north of the Possession Point-Shipwreck line (described in 9 below).
9	ADMIRALTY INLET	All waters inside and south of the Partridge Point - Point Wilson line, south and west of a line from Possession Point 110° true to shipwreck, north of the Hood Canal Bridge, and north of the Apple Cove Point-Edwards Point line.
10	SEATTLE-BREMERTON AREA	South from the Apple Cove Point-Edwards Point line to a line projected true east- west through the north tip of Vashon Island.
11	TACOMA-VASHON ISLAND	South from a line projected true east west through the north tip of Vashon Island to the Tacoma Narrows Bridge.
12	HOOD CANAL	All waters south of the Hood Canal Bridge.
13	SOUTH PUGET SOUND	All waters south of Tacoma Narrows Bridge.

FRESHWATER AREAS

RIVERS OR STREAMS OR LAKES - Name of river, stream or lake, except for Buoy 10

BUOY 10 (1A)

From Buoy 10 Line to Rocky Point-Tongue Point Line

Table 4. Annual Sport Salmon Catch.

Year	Total	Fresh-water	Un-known	Area 1	Area 1A	Area 2	Area 2-1	Area 2-2	Area 3	Area 4	Area 5	Area 6	Area 7	Area 8	Area 8-1	Area 8-2	Area 9	Area 10	Area 11	Area 12	Area 13
1971	1,344,818	145,904		342,928		446,738			39,682	87,184	71,947	39,573	28,355	5,189			54,920	35,225	27,332	19,841	
1972	1,138,926	121,432		307,938		353,113			31,278	61,704	45,446	45,058	29,536	3,097			42,968	32,942	35,962	28,452	
1973	1,095,360	147,554		236,385		348,406			49,900	48,645	33,347	40,308	14,852	3,966			52,935	42,574	61,919	14,569	
1974	1,320,420	88,048		334,664		320,467			74,832	80,362	50,319	53,222	36,318	5,491			76,518	69,341	105,110	25,728	
1975	1,399,375	101,531		308,475		331,565			57,356	59,451	48,975	74,336	37,626	7,726			100,089	78,832	162,072	31,341	
1976	1,749,560	100,601		433,026		543,295			70,133	68,670	63,966	102,639	55,396	21,688			88,737	62,607	61,562	24,405	52,835
1977	1,191,414	96,843		248,518		321,888			38,359	86,186	73,106	61,568	31,709	17,792			64,651	39,372	44,657	22,020	44,745
1978	1,107,852	86,845		220,548		269,338			24,439	52,270	59,400	68,849	36,293	13,229			73,187	56,479	48,018	26,801	72,156
1979	1,123,809	88,659		167,478		174,365			24,160	53,840	134,354	70,839	48,101	33,835			104,619	71,167	71,495	20,006	60,891
1980	852,879	105,461		158,883		163,748			19,146	29,500	39,587	52,663	24,457	18,432			60,072	52,128	57,751	17,138	53,913
1981	760,104	58,128		142,879		151,301			1,734	36,883	55,900	56,318	21,826	16,986			67,838	42,602	42,175	14,989	50,545
1982	749,995	91,849		102,769	13,069	158,005			9,857	42,716	67,611	33,870	12,947	9,940			49,853	49,727	51,975	8,672	47,135
1983	860,623	108,783		95,593	3,006	100,791			7,318	58,469	62,486	74,311	29,844	23,268			98,485	54,228	72,772	11,756	59,513
1984	561,428	142,170		23,927	55,865	16,631			167	6,604	39,276	67,246	29,985	17,442			79,526	24,130	28,781	5,158	24,520
1985	686,333	107,734		75,013	18,914	93,620			2,062	26,878	101,920	45,342	23,798	25,427			75,193	33,019	38,157	4,897	14,359
1986	830,644	115,469		69,915	86,360	98,421			2,553	25,027	138,951	71,544	27,550	26,822			79,730	33,686	33,891	3,460	17,265
1987	782,834	110,636		62,393	61,048	71,458			3,005	29,418	107,138	82,377	27,152	31,421			86,270	42,179	32,753	8,947	26,639
1988	703,088	168,594		22,960	120,019	62,001			3,341	19,576	107,935	47,483	22,225	16,514			47,109	28,020	22,202	2,420	12,689
1989	832,214	121,417		87,755	67,734	100,000			2,405	44,600	164,580	64,766	19,078	23,165			63,724	36,748	24,561	4,588	7,093
1990	824,143	107,934		97,844	16,850	102,984			5,809	48,329	223,012	54,848	12,797	14,865			57,875	47,519	25,555	1,618	6,304
1991	943,473	153,719		77,608	152,974	107,362	1,965	9,047	5,615	43,357	216,816	42,812	16,602		3,528	16,809	40,390	32,229	15,549	3,225	3,866
1992	569,195	90,032		48,356	37,157	67,427	1,978	0	2,031	25,820	108,876	30,894	12,515		3,295	11,836	47,157	51,338	18,198	6,303	5,982
1993	599,361	145,579		49,587	17,975	57,990	2,260	743	3,469	31,154	80,496	44,174	35,697		6,150	18,170	41,949	36,699	14,130	3,540	9,599
1994	156,896	61,142			1,069	71	2,574	1,971	Closed	Closed	518	1,184	8,322		1,917	3,301	6,978	23,279	25,360	8,905	10,305
1995	524,232	190,158		3,743	24,954	29,122	936	1,799	1,990	15,604	53,553	20,617	23,801		23,503	42,900	22,920	28,560	28,242	5,200	6,630
1996	390,660	161,108		17,882	3,509	23,089	2,422	2,601	1,901	8,750	41,820	18,103	15,486		2,350	13,968	20,343	18,972	25,417	6,408	6,531
1997	394,868	98,220		11,976	22,441	16,261	409	1,433	1,260	2,577	52,890	23,614	35,016		5,894	37,649	24,356	25,277	23,146	7,089	5,360
1998	235,466	78,664		4,738	5,364	9,348	1,329	2,970	762	8,045	24,509	6,657	5,801		2,095	12,409	24,324	16,674	17,272	7,782	6,723
1999	239,317	92,611		21,989	11,222	19,056	2,137	1,207	4,387	6,650	24,546	3,509	5,765		1,519	8,805	9,228	4,009	14,517	4,046	4,114
2000	401,180	191,805	4,228	27,889	16,335	34,636	870	2,736	2,519	11,652	29,883	4,334	7,178		2,105	12,798	12,608	15,681	14,212	4,580	5,131
2001	1,056,395	405,590	11,042	82,641	80,701	85,645	1,255	5,784	4,188	21,991	87,639	12,081	17,268		17,685	74,947	70,259	26,448	27,761	17,677	5,793
2002	551,479	306,424	6,443	53,015		61,715	960	3,530	3,736	13,523	35,100	1,418	8,326		1,544	8,609	12,731	11,885	12,044	7,039	3,437
2003	810,616	342,884	6,940	83,164		64,733	1,953	2,135	6,537	32,207	88,885	13,781	12,409		10,573	51,784	44,697	16,541	17,719	10,898	2,776
2004	474,929	214,116	2,562	59,321		38,616	1,759	6,017	5,152	34,760	45,000	2,511	3,428		1,117	7,606	15,024	13,766	13,944	7,293	2,937
2005	451,411	200,535	1,789	38,490		32,823	3,580	1,910	4,316	15,297	58,621	3,295	5,934		1,691	18,846	24,125	12,866	15,022	8,392	3,879
2006	288,716	174,224	1,212	21,254		14,506	3,368	1,812	3,754	7,136	13,244	1,601	4,486		378	2,280	6,398	11,193	12,024	6,214	3,632
2007	545,737	231,800	2,501	49,108		28,694	1,473	1,635	3,545	16,057	75,084	6,626	9,961		1,513	21,604	41,906	20,149	22,602	6,955	4,524
2008	251,975	160,431	1,491	11,729		16,983	2,788	1,001	1,356	3,415	14,765	1,437	3,651		580	1,303	6,982	8,007	9,598	3,124	3,334
2009	1,074,938	571,230	16,885	69,430		60,414	5,975	5,257	10,437	69,692	73,767	16,056	10,173		6,207	32,774	63,436	30,738	26,325	4,081	2,061
2010	335,931	204,196	3,881	24,191		39,821	1,893	2,122	2,196	6,934	19,540	3,014	4,543		234	961	7,786	6,369	4,621	2,415	1,214
2011	906,876	572,283	15,699	26,948		34,069	6,314	3,327	5,558	13,024	62,003	20,257	19,305		12,935	23,979	35,631	23,810	22,540	5,738	3,456
2012	584,694	285,247	4,624	17,131		31,417	4,358	9,030	3,804	12,787	72,396	17,494	9,228		2,549	13,863	53,679	25,308	12,690	6,855	2,234

Note: In 1976, several area boundary lines were changed resulting in thirteen catch areas instead of twelve. The changes were mostly reflected in catch Areas 8, 9, 10 and new Area 13. In 1989, catch Area 8 was subdivided into Areas 8.1 and 8.2 and catch Area 2 was subdivided into Areas 2, 2-1 and 2-2. For comparative purposes, the catch for Areas 8-1 and 8-2 are totaled and entered under Area 8 until 1990. Beginning in 1991, Areas 8-1 and 8-2, are reported separately. Similarly, the catch in Areas 2, 2-1 and 2-2 are included in the total catch for Area 2 until 1990. Beginning in 1991, they are reported separately. The total catch for Area 1 and Area 1A is included in the total catch for Area 1 until 1981. Starting in 1982, they are reported separately. Beginning in 2002, Area 1A catch is included in the freshwater total.

Table 5. Total 2012-2013 Sport Salmon Catch.

Marine Area	Chinook	Coho	Chum	Pink	Sockeye	Jacks	Total Salmon	Marine Angler Trips	Salmon per Trip
Ilwaco-Ocean (Area 1)	7,413	9,718					17,131	27,814	0.62
Westport (Area 2)	19,493	11,924					31,417	37,325	0.84
Willapa Bay (Area 2.1)	2,605	1,461				292	4,358	N/A	
Grays Harbor (Area 2.2)	2,516	6,236				278	9,030	N/A	
LaPush (Area 3)	1,438	2,366					3,804	3,926	0.97
Neah Bay (Area 4)	5,383	7,404					12,787	13,439	0.95
Subtotal Coast*	38,848	39,109				570	78,527	82,504	0.79
Seki-u-Pillar Point (Area 5)	6,638	65,676	62	2	18		72,396	65,258	1.11
East Juan de Fuca (Area 6)	6,911	10,489	91	3			17,494	24,823	0.70
San Juan Islands (Area 7)	7,000	2,182	19		27		9,228	40,415	0.23
Deception Pass, Hope Island (Area 8-1)	344	2,205					2,549	7,366	0.35
Port Susan & Port Gardner (Area 8-2)	732	13,131					13,863	41,733	0.33
Admiralty Inlet (Area 9)	8,758	44,754		158	9		53,679	101,455	0.53
Seattle-Bremerton (Area 10)	3,360	21,408	536		4		25,308	48,594	0.52
Tacoma-Vashon Island (Area 11)	5,610	7,056	24				12,690	61,211	0.21
Hood Canal (Area 12)	2,546	2,034	2,275				6,855	27,302	0.25
South Puget Sound (Area 13)	1,001	748	485				2,234	28,867	0.08
Subtotal Puget Sound	42,900	169,683	3,492	163	58		216,296	447,024	0.48
Marine Area Totals*	81,748	208,792	3,492	163	58	570	294,823	529,528	0.56
Freshwater Totals	117,891	74,973	10,332		61,395	25,280	289,871	N/A	
Grand Totals	199,639	283,765	13,824	163	61,453	25,850	584,694	N/A	

*Salmon per trip is calculated after subtracting the catch totals for Willapa Bay and Grays Harbor, where angler trip data is not available.

Table 6. 2012 Sport Salmon Catch, Area 1 - Ilwaco: Ocean

Week Ending	Year	Chinook	Coho	Pink	Sockeye	Chum	Total Salmon	Marine Angler Trips	Salmon per Trip
June 10	2012	37	3				40	126	0.31
June 17	2012	527					527	569	0.93
June 24	2012	728	32				760	938	0.81
July 1	2012	500	160				660	1,026	0.64
July 8	2012	665	688				1,353	1,630	0.83
July 15	2012	399	729				1,128	1,527	0.74
July 22	2012	216	640				856	1,607	0.53
July 29	2012	920	1000				1,919	2,652	0.72
August 5	2012	690	1263				1,953	2,391	0.82
August 12	2012	491	1604				2,095	2,918	0.72
August 19	2012	690	817				1,506	3,619	0.42
August 26	2012	820	738				1,558	2,954	0.53
September 2	2012	509	577				1,086	2,820	0.39
September 9	2012	142	1033				1,175	1,665	0.71
September 16	2012	67	288				355	841	0.42
September 23	2012	9	141				150	453	0.33
September 30	2012	2	7				9	76	0.12
Total		7,413	9,718				17,131	27,814	0.62

Table 7. 2012 - 2013 Sport Salmon Catch, Area 1 - Ilwaco: River (Buoy 10)

Week Ending	Year	Chinook	Coho	Pink	Sockeye	Chum	Total Salmon	Angler Trips	Salmon per Trip
August 5	2012	53	16				69	466	0.15
August 12	2012	781	111				892	2,573	0.35
August 19	2012	1,361	187				1,548	5,948	0.26
August 26	2012	2,491	792				3,283	8,382	0.39
September 2	2012	787	646				1,433	4,161	0.34
September 9	2012	57	294				351	987	0.36
September 16	2012	12	135				147	560	0.26
September 23	2012	0	71				71	203	0.35
September 30	2012	0	54				54	145	0.37
October 7	2012	0	24				24	52	0.46
Total		5,542	2,330				7,872	23,477	0.34

Table 8. 2012 Sport Salmon Catch, Area 2 - Westport

Week Ending	Year	Chinook	Coho	Pink	Sockeye	Chum	Total Salmon	Marine Angler Trips	Salmon per Trip
June 10	2012	1,372	0				1,372	931	1.47
June 17	2012	2,591	0				2,591	2,674	0.97
June 24	2012	2,029	22				2,051	2,636	0.78
July 1	2012	1,589	162				1,751	1,946	0.90
July 8	2012	1,182	117				1,298	2,097	0.62
July 15	2012	1,183	458				1,642	1,972	0.83
July 22	2012	1,150	975				2,125	2,494	0.85
July 29	2012	517	1,574				2,091	2,336	0.90
August 5	2012	1,406	709				2,115	3,011	0.70
August 12	2012	2,000	306				2,306	3,406	0.68
August 19	2012	1,238	1,067				2,304	3,201	0.72
August 26	2012	1,665	1,074				2,739	3,307	0.83
September 2	2012	736	1,148				1,884	2,537	0.74
September 9	2012	343	1,033				1,375	1,627	0.85
September 16	2012	214	1,406				1,620	1,464	1.11
September 23	2012	279	1,873				2,151	1,686	1.28
Total		19,493	11,924				31,416	37,325	0.84

Table 9. 2012-2013 Sport Salmon Catch, Area 2-1 - Willapa Bay

Statistical Month	Year	Chinook	Coho	Pink	Sockeye	Chum	Chinook Jacks	Coho Jacks	Total Salmon
June	2012	8							8
July	2012	29	11				6		46
August	2012	1,523	475				178	52	2,228
September	2012	1,045	967				56		2,068
October	2012		8						8
Total		2,605	1,461				240	52	4,358

Table 10. 2012-2013 Sport Salmon Catch, Area 2-2 - Grays Harbor

Statistical Month	Year	Chinook	Coho	Pink	Sockeye	Chum	Chinook Jacks	Coho Jacks	Total Salmon
June	2012	8							8
July	2012	23	7						30
August	2012	99	76						175
September	2012	2,022	4,364				117	124	6,627
October	2012	364	1,774				7	22	2,167
November	2012		8						8
January	2013		7				8		15
Total		2,516	6,236				132	146	9,030

Table 11. 2012 Sport Salmon Catch, Area 3 - La Push

Week Ending	Year	Chinook	Coho	Pink	Sockeye	Chum	Total Salmon	Marine Angler Trips	Salmon per Trip
June 17	2012	1					1	20	0.05
June 24	2012	38					38	99	0.39
July 1	2012	54	11				65	177	0.37
July 8	2012	56	155				210	273	0.77
July 15	2012	107	136				244	248	0.98
July 22	2012	131	137				269	250	1.07
July 29	2012	256	63				319	359	0.89
August 5	2012	175	296				471	433	1.09
August 12	2012	110	184				294	320	0.92
August 19	2012	130	366				495	371	1.33
August 26	2012	94	295				389	255	1.52
September 2	2012	68	225				293	249	1.18
September 9	2012	15	116				131	154	0.85
September 16	2012	22	193				215	139	1.55
September 23	2012	42	167				208	192	1.09
September 30	2012	6	2				9	33	0.26
October 7	2012	116	15				131	314	0.42
October 14	2012	17	5				22	40	0.56
Total		1,438	2,366				3,804	3,926	0.97

Table 12. 2012 Sport Salmon Catch, Area 4 - Neah Bay

Week Ending	Year	Chinook	Coho	Pink	Sockeye	Chum	Total Salmon	Marine Angler Trips	Salmon per Trip
June 17	2012	137					137	240	0.57
June 24	2012	274	1				275	404	0.68
July 1	2012	535	122				657	813	0.81
July 8	2012	1,396	1,187				2,583	2,489	1.04
July 15	2012	827	548				1,374	1,536	0.89
July 22	2012	532	840				1,372	1,504	0.91
July 29	2012	534	942				1,476	1,542	0.96
August 5	2012	303	693				997	983	1.01
August 12	2012	283	860				1,144	890	1.29
August 19	2012	417	635				1,052	969	1.09
August 26	2012	102	817				920	799	1.15
September 2	2012	32	570				602	722	0.83
September 9	2012	8	119				127	333	0.38
September 16	2012	2	69				71	130	0.55
September 23	2012							83	
Total		5,383	7,404				12,787	13,439	0.95

Table 13. 2012-2013 Sport Salmon Catch, Area 5 - Sekiu - Pillar Point

Statistical Month	Year	Chinook	Coho	Pink	Sockeye	Chum	Total Salmon	Marine Angler Trips	Salmon per Trip
April	2012	218					218	437	0.50
July	2012	3,686	3,603		18		7,307	12,930	0.57
August	2012	2,073	5,963	2			8,038	12,048	0.67
September	2012	301	51,217			10	51,528	35,650	1.45
October	2012	105	4,893			52	5,050	3,896	1.30
February	2013	55					55	55	1.00
March	2013	200					200	242	0.83
Total		6,638	65,676	2	18	62	72,396	65,258	1.11

NOTE: Estimates for July-August are from creel surveys; all other estimates are from catch record cards.

Table 14. 2012-2013 Sport Salmon Catch, Area 6 - East Juan de Fuca Strait

Statistical Month	Year	Chinook	Coho	Pink	Sockeye	Chum	Total Salmon	Marine Angler Trips	Salmon per Trip
April	2012	255					255	631	0.40
July	2012	3,801	158	3			3,962	7,097	0.56
August	2012	1,744	866				2,610	4,750	0.55
September	2012	27	3,931				3,958	5,383	0.74
October	2012	67	5,534			91	5,692	4,111	1.38
December	2012	190					190	477	0.40
January	2013	318					318	816	0.39
February	2013	229					229	708	0.32
March	2013	280					280	850	0.33
Total		6,911	10,489	3		91	17,494	24,823	0.70

NOTE: Estimates for December-March are from creel surveys; all other estimates are from catch record cards.

Table 15. 2012-2013 Sport Salmon Catch, Area 7 - San Juan Islands

Statistical Month	Year	Chinook	Coho	Pink	Sockeye	Chum	Total Salmon	Marine Angler Trips	Salmon per Trip
April	2012	611					611	2,290	0.27
July	2012	1,934	11				1,945	9,569	0.20
August	2012	991	109		27		1,127	11,803	0.10
September	2012	471	402				873	6,024	0.14
October	2012	200	1,660			19	1,879	2,740	0.69
December	2012	639					639	1,255	0.51
January	2012	1,024					1,024	2,384	0.43
February	2013	546					546	1,923	0.28
March	2013	584					584	2,427	0.24
Total		7,000	2,182	0	27	19	9,228	40,415	0.23

NOTE: Estimates for December-March are from creel surveys; all other estimates are from catch record cards.

Table 16. 2012-2013 Sport Salmon Catch, Area 8-1 - Deception Pass / Hope Island

Statistical Month	Year	Chinook	Coho	Pink	Sockeye	Chum	Total Salmon	Marine Angler Trips	Salmon per Trip
April	2012	86					86	607	0.14
August	2012	8	129				137	803	0.17
September	2012	5	1,423				1,428	2,786	0.51
October	2012		653				653	1,553	0.42
November	2012	160					160	552	0.29
December	2012	39					39	468	0.08
February	2013	33					33	417	0.08
March	2013	13					13	180	0.07
Total		344	2,205				2,549	7,366	0.35

NOTE: Estimates for November-March are from creel surveys; all other estimates are from catch record cards.

Table 17. 2012-2013 Sport Salmon Catch, Area 8-2 - Port Susan / Port Gardner

Statistical Month	Year	Chinook	Coho	Pink	Sockeye	Chum	Total Salmon	Marine Angler Trips	Salmon per Trip
April	2012	189					189	1,403	0.13
May	2012	19					19	2,434	0.01
June	2012	43					43	1,212	0.04
July	2012	50					50	2,150	0.02
August	2012	47	551				598	9,896	0.06
September	2012	48	9,272				9,320	13,103	0.71
October	2012	46	3,300				3,346	7,957	0.42
November	2012	83	8				91	867	0.10
December	2012	49					49	583	0.08
January	2013	62					62	642	0.10
February	2013	50					50	711	0.07
March	2013	46					46	775	0.06
Total		732	13,131				13,863	41,733	0.33

NOTE: Estimates for April, November-March are from creel surveys; all other estimates are from catch record cards.

Table 18. 2012-2013 Sport Salmon Catch, Area 9 - Admiralty Inlet

Statistical Month	Year	Chinook	Coho	Pink	Sockeye	Chum	Total Salmon	Marine Angler Trips	Salmon per Trip
April	2012	119					119	660	0.18
June	2012	6					6	60	0.10
July	2012	3,718	277				3,995	23,867	0.17
August	2012	3,379	3,479		9	8	6,875	17,868	0.38
September	2012	141	32,132				32,273	34,599	0.93
October	2012	35	8,851			133	9,019	18,690	0.48
November	2012	724	4			17	745	2,331	0.32
December	2012	6	6				12	39	0.31
January	2013	453					453	1,294	0.35
February	2013	86					86	971	0.09
March	2013	91	5				96	1,076	0.09
Total		8,758	44,754		9	158	53,679	101,455	0.53

NOTE: Estimates for April, July-August, and November-March are from creel surveys; all other estimates are from catch record cards.

Table 19. 2012-2013 Sport Salmon Catch, Area 10 - Seattle / Bremerton

Statistical Month	Year	Chinook	Coho	Pink	Sockeye	Chum	Total Salmon	Marine Angler Trips	Salmon per Trip
June	2012	12					12	77	0.16
July	2012	645	774		4	12	1,435	9,308	0.15
August	2012	2,453	2,529			6	4,988	14,479	0.34
September	2012	52	14,740			21	14,813	14,005	1.06
October	2012	44	3,348			60	3,452	6,866	0.50
November	2012	69	11			437	517	2,562	0.20
December	2012	62					62	674	0.09
January	2013	17					17	549	0.03
February	2013	6					6	37	0.16
March	2013		6				6	37	0.16
Total		3,360	21,408		4	536	25,308	48,594	0.52

NOTE: Estimates for parts of July-August, October-January are from creel surveys; all other estimates are from catch record cards.

Table 20. 2012-2013 Sport Salmon Catch, Area 11 -Tacoma / Vashon Island

Statistical Month	Year	Chinook	Coho	Pink	Sockeye	Chum	Total Salmon	Marine Angler Trips	Salmon per Trip
April	2012	88					88	761	0.12
June	2012	398					398	4,418	0.09
July	2012	999	67				1,066	13,566	0.08
August	2012	2,929	603				3,532	18,402	0.19
September	2012	701	5,253				5,954	16,676	0.36
October	2012	204	1,133			10	1,347	4,450	0.30
November	2012	200				6	206	882	0.23
December	2012	23				8	31	661	0.05
February	2013	41					41	678	0.06
March	2013	27					27	717	0.04
Total		5,610	7,056			24	12,690	61,211	0.21

NOTE: Estimates for April, June-October, and February-March are from creel surveys; other estimates are from catch record cards.

Table 21. 2012-2013 Sport Salmon Catch, Area 12 - Hood Canal

Statistical Month	Year	Chinook	Coho	Pink	Sockeye	Chum	Total Salmon	Marine Angler Trips	Salmon per Trip
April	2012	106					106	732	0.14
July	2012	37					37	362	0.10
August	2012	699	316				1,015	4,936	0.21
September	2012	1,337	1,092				2,429	12,445	0.20
October	2012	12	626			525	1,163	5,923	0.20
November	2012					1,750	1,750	1,543	1.13
December	2012	125					125	319	0.39
January	2013	6					6	20	0.30
February	2013	106					106	447	0.24
March	2013	118					118	575	0.21
Total		2,546	2,034			2,275	6,855	27,302	0.25

Table 22. 2012-2013 Sport Salmon Catch, Area 13 - South Puget Sound

Statistical Month	Year	Chinook	Coho	Pink	Sockeye	Chum	Total Salmon	Marine Angler Trips	Salmon per Trip
April	2012	25					25	916	0.03
May	2012	19					19	619	0.03
June	2012	25					25	1,543	0.02
July	2012	75					75	7,825	0.01
August	2012	456	23				479	6,367	0.08
September	2012	239	434				673	7,586	0.09
October	2012	80	234			177	491	1,709	0.29
November	2012	15				308	323	639	0.51
December	2012	21	41				62	477	0.13
January	2013	15	16				31	844	0.04
March	2013	31					31	342	0.09
Total		1,001	748			485	2,234	28,867	0.08

Table 23. 2012-2013 Freshwater Salmon Sport Catch by Area and Month

COASTAL RIVER SYSTEMS																
System	Stream	CRC Code	Species	2012									2013			Total
				Apr	May	Jun	Jul	Aug	Sep	Oct	Nov	Dec	Jan	Feb	Mar	
Grays Harbor	Elk River	342	Coho								81					81
			Total								81					81
	Hoquiam River	355	Coho								7	7				14
			Total								7	7				14
	Humptulips River	358	Chinook							112	1,293	144	52	7		1,608
			Coho							7	1,307	1,201	396	15		2,926
			Jackchin							22	103	7	7			139
			Jackcoho								74	7				81
	Total							141	2,777	1,359	455	22		4,754		
	Johns River	367	Coho							15	29					44
Total									15	29					44	
Wishkah River	335	Coho								125	29				154	
		Jackcoho								7					7	
		Total								132	29				161	
Chehalis R. System	Chehalis River	315	Chinook		37	29				37	384				487	
			Coho							702	4,198	1,040	37	22		5,999
			Jackchin			7				29	58					94
			Jackcoho							214	648	7				869
	Total		37	36				982	5,288	1,047	37	22		7,449		
	Quigg Lake	370	Coho										7		7	
			Total										7		7	
	Satsop River	329	Coho							22	775	827	458			2,082
			Jackcoho								7	22	7			36
			Total							22	782	849	465			2,118
Skookumchuck River	333	Coho								52	142	142			336	
		Jackcoho										7			7	
		Total								52	142	149			343	
Wynoochee River	337	Coho								71	111	8			190	
		Total								71	111	8			190	

Table 23. 2012-2013 Freshwater Salmon Sport Catch by Area and Month (continued)

COASTAL RIVER SYSTEMS															
System	Stream	CRC Code	Species	2012								2013			Total
				Apr	May	Jun	Jul	Aug	Sep	Oct	Nov	Dec	Jan	Feb	
Copalis R. System	Copalis River	339	Coho						212	448	16				676
			Jackchin						23	8					31
			Jackcoho						15	30					45
			Total						250	486	16				752
Hoh R. System	Hoh River	348	Chinook		22	7	11	7	49	163	22				281
			Coho				11		25	341	67	7			451
			Sockeye			7									7
			Jackchin				7		7	15					29
			Total		22	14	29	7	81	519	89	7			768
Queets R. System	Clearwater River	392	Chinook							53	23				76
			Coho							127	135	32			294
			Jackcoho									8			8
			Total							180	166	32			378
	Queets River	394	Chinook							113	30				143
			Coho							201	32				233
			Jackcoho						15	8					23
	Salmon River (Jefferson Co)	396	Chinook								38	45			83
			Total								38	45			83
Quillayute R. System	Bogachiel River	398	Chinook						14	22	21				57
			Coho						7	230	188				425
			Jackchin						56	21					77
			Jackcoho				21		7	14	14				56
			Total				21		84	287	223				615
	Calawah River	400	Chinook								7				
Coho										10	10				20
Sockeye						7									7
Total						7				17	10				34

Table 23. 2012-2013 Freshwater Salmon Sport Catch by Area and Month (continued)

COASTAL RIVER SYSTEMS																	
System	Stream	CRC Code	Species	2012									2013			Total	
				Apr	May	Jun	Jul	Aug	Sep	Oct	Nov	Dec	Jan	Feb	Mar		
Quillayute R. System (cont.)	Dickey River (Clallam Co)	402	Chinook								14					14	
			Coho								83	8					91
			Jackchin								7						7
			Total								104	8					112
	Quillayute River	404	Chinook		14					7	105			7			133
			Coho							14	188	14					216
			Jackchin							49	91						140
			Jackcoho							35	154						189
	Total		14						105	538	14	7			678		
	Sol Duc River	406	Chinook	78	199	128	166	14	14	14	121	50				21	791
Chum												7				7	
Coho						50	183	92	310	176						811	
Sockeye					209	206	14	28	7							464	
Jackchin			14		21		7		49							91	
Jackcoho						7	7	7	49	14						84	
Total	92	199	358	429	225	141	536	247					21	2,248			
Quinault R. System	Cook Creek	408	Chinook								8					8	
			Total								8					8	
	Quinault River	410	Chinook								30					30	
			Coho							30	113	8	15			166	
Jackcoho								8						8			
Total							30	151	8	15				204			
Van Winkle Creek	Van Winkle Creek	419	Coho								1					1	
			Total								1					1	

Table 23. 2012-2013 Freshwater Salmon Sport Catch by Area and Month (continued)

COASTAL RIVER SYSTEMS																	
System	Stream	CRC Code	Species	2012								2013			Total		
				Apr	May	Jun	Jul	Aug	Sep	Oct	Nov	Dec	Jan	Feb		Mar	
Willapa Bay	Naselle River	375	Chinook					207	519	193			15			22	956
			Coho						45	492	1,015	589	22				2,163
			Jackchin						11	33							44
			Jackcoho						7	30	22	22					81
			Total					207	582	748	1,037	626	22		22		3,244
	Nemah River	379	Chinook					15	1,566	234							1,815
			Coho						15	15	7						37
			Jackchin						59	15							74
			Total					15	1,640	264	7						1,926
	North River	382	Chinook						7								7
			Coho						60	346	60	8					474
			Jackcoho						30	230							260
			Total						97	576	60	8					741
	Smith Creek (Pacific Co)	384	Coho							7	37						44
			Total							7	37						44
	Willapa River	424	Chinook					23	278	188	30	53	19				591
			Coho						82	164	381	239	19				885
			Jackchin					7	52	30			7				96
			Jackcoho							7	15	7					29
			Total					30	412	389	426	299	45				1,601
Coastal River Totals			Chinook	78	272	164	177	266	2,603	2,966	365	127	26		43	7,087	
			Chum								7				7		
			Coho				61	183	1,328	9,721	5,518	1,931	78			18,820	
			Sockeye			216	213	14	28	7						478	
			Jackchin	14		28	7	14	308	430	7	7	7			822	
			Jackcoho				28	7	330	1,266	109	43				1,783	
			Total	92	272	408	486	484	4,597	14,390	6,006	2,108	111		43	28,997	

Table 23. 2012-2013 Freshwater Salmon Sport Catch by Area and Month (continued)

COLUMBIA RIVER SYSTEMS																	
System	Stream	CRC Code	Species	2012									2013			Total	
				Apr	May	Jun	Jul	Aug	Sep	Oct	Nov	Dec	Jan	Feb	Mar		
Columbia R. Mainstem	B10 Line - Rocky Pt - Tongue Pt Line	519	Chinook					4,686	856								5,542
			Coho					1,106	1,146	78							2,330
			Total					5,792	2,002	78							7,872
	Columbia - below Bonneville	521	Chinook	5,456	339	1,584	97	4,114	7,930	268				18	771	20,577	
			Coho					18	315	155						488	
			Sockeye		1	1,423	73										1,497
Jackchin			30	44	150	37	291	1,778	103					1	2,434		
Jackcoho							32	25	7					64			
Total	5,486	384	3,157	207	4,423	10,055	551	7				18	772	25,060			
Cowlitz R. System	Cispus River	555	Chinook		7	7		7	125						146		
			Jackchin			7									7		
			Total		7	14		7	125						153		
	Cowlitz R. below Mayfield Dam	561	Chinook	1,981	1,920	673	386	393	2,083	380	31		8	22	68	7,945	
			Coho				22	37	430	1,153	286	59	7			1,994	
			Jackchin	114	227	68	38	30	409	151	8	8	8			1,061	
			Jackcoho							158	855	113	15			1,141	
	Total	2,095	2,147	741	446	460	3,080	2,539	438	82	23	22	68	12,141			
	Cowlitz R. between Mayfield & Cowlitz Falls Dams	563	Chinook			7	7		22						36		
			Total			7	7		22						36		
	Cowlitz R. above Cowlitz Falls Dam	559	Chinook			37	22	7		44					110		
			Coho							15	84	69	23		191		
Jackcoho										15	7			22			
Total					37	22	7	15	143	76	23			323			
Green River (Cowlitz Co)	565	Chinook						22						22			
		Coho							15					15			
		Jackcoho								7				7			
		Total							22	22				44			

Table 23. 2012-2013 Freshwater Salmon Sport Catch by Area and Month (continued)

COLUMBIA RIVER SYSTEMS																		
System	Stream	CRC Code	Species	2012									2013			Total		
				Apr	May	Jun	Jul	Aug	Sep	Oct	Nov	Dec	Jan	Feb	Mar			
Cowlitz R. System (cont.)	Tilton River	571	Chinook					8	63	287	16					374		
			Coho						22	885	353	51					1,311	
			Jackchin				22				44							66
			Jackcoho								44	37	37					118
			Total				22	8	85	1,260	406	88						1,869
	Toutle River	573	Chinook							41	25						66	
			Coho							44	22						66	
			Jackchin							29							29	
			Total							114	47						161	
	Toutle River, No Fork	575	Chinook							508	74						582	
			Coho							74	7						81	
			Jackchin							22							22	
Total									604	81						685		
Lewis R. System	Lewis River	611	Chinook	32	24	24	8	8		32	8	24				160		
			Coho						88	15							103	
			Jackcoho						7								7	
			Total	32	24	24	8	8	95	47	8	24					270	
	Lewis River, North Fork	615	Chinook	119	82	52			30	527	853	132	22				1,817	
			Coho						15	52	96	46					209	
			Jackchin		37	22				236	508	15					818	
			Jackcoho							125	37	15					177	
Total	119	119	74			45	940	1,494	208	22					3,021			
Lower Columbia	Deep River (Wahkiakum Co)	580	Chinook		14	36										50		
			Total		14	36											50	
	Elochoman River	583	Coho									7				7		
Total											7				7			

Table 23. 2012-2013 Freshwater Salmon Sport Catch by Area and Month (continued)

COLUMBIA RIVER SYSTEMS																	
System	Stream	CRC Code	Species	2012								2013			Total		
				Apr	May	Jun	Jul	Aug	Sep	Oct	Nov	Dec	Jan	Feb		Mar	
Lower Columbia (cont.)	Grays River	595	Chinook					7	28							35	
			Coho						7	57							64
			Jackchin								7						7
			Total					7	35	64							106
	Grays River, West Fork	596	Chinook			7											7
			Coho								43	21					64
			Total			7					43	21					71
	Kalama River	604	Chinook	164	306	28		121	909	174							1,702
			Coho					7	24	301	37						369
			Jackchin		43					14	7			7			71
			Jackcoho							7	14						21
			Total	164	349	28		128	954	496	37	7					2,163
	Washougal River	667	Chinook				7	7	1,517	160							1,691
			Coho						74	64	14						152
			Jackchin							36							36
Jackcoho									28	50						78	
Total						7	7	1,655	274	14						1,957	
Lower Columbia System Totals			Chinook	7,752	2,692	2,455	527	9,388	14,631	2,297	187	46	8	40	839	40,862	
			Coho				22	1,183	2,291	2,975	833	133	7			7,444	
			Sockeye		1	1,423	73									1,497	
			Jackchin	144	351	247	97	321	2,524	820	23	15	8		1	4,551	
			Jackcoho						357	1,047	179	52				1,635	
			Total	7,896	3,044	4,125	719	10,892	19,803	7,139	1,222	246	23	40	840	55,989	

Table 23. 2012-2013 Freshwater Salmon Sport Catch by Area and Month (continued)

COLUMBIA RIVER SYSTEMS																	
System	Stream	CRC Code	Species	2012									2013			Total	
				Apr	May	Jun	Jul	Aug	Sep	Oct	Nov	Dec	Jan	Feb	Mar		
Big White Salmon River	Big White Salmon River	508	Chinook	3						7						10	
			Total	3					7							10	
Klickitat River	Klickitat River above Fishway 5	608	Chinook			7	72	36	652	442	7					1,216	
			Coho								14					14	
			Jackchin				43		65	72						180	
			Jackcoho						7	14						21	
				Total			7	115	36	724	528	21				1,431	
	Klickitat River below Fishway 5	607	Chinook		408	153	58	29	1,995	2,102	36						4,781
			Coho				7	14	821	652	80					1,574	
			Jackchin		150	52	15	97	792	770	7	15				1,898	
Jackcoho								14	167	87	7				275		
			Total	558	205	73	133	2,815	3,860	782	102				8,528		
Little White Salmon River & Drano Lake	Little White Salmon River & Drano Lake	618	Chinook	284	1,567	58	15	175	525	619	44				7	3,294	
			Coho						93	122	22					237	
			Jackchin		22	29		7	208	330	29					625	
			Jackcoho							7						7	
			Total	284	1,589	87	15	182	826	1,078	95					7	4,163
Mid Columbia	Columbia Bonneville Dam to The Dalles Dam	527	Chinook	31	268	8	8	77	1,103	728	8	8				2,239	
			Coho						47	468	77					592	
			Sockeye			7	7									14	
			Jackchin			8		53	347	370						778	
			Jackcoho						24	80						104	
				Total	31	268	23	15	130	1,521	1,646	85	8			3,727	
	Columbia The Dalles Dam to John Day Dam	529	Chinook	166	197	45	8	30	204	45	15					710	
			Coho						30	7					37		
			Jackchin		24				56	16					96		
			Jackcoho						7						7		
Total			166	221	45	8	30	297	68	15					850		

Table 23. 2012-2013 Freshwater Salmon Sport Catch by Area and Month (continued)

COLUMBIA RIVER SYSTEMS																		
System	Stream	CRC Code	Species	2012									2013			Total		
				Apr	May	Jun	Jul	Aug	Sep	Oct	Nov	Dec	Jan	Feb	Mar			
Mid Columbia (cont.)	Columbia John Day Dam to McNary Dam	531	Chinook	8	119	16	8		64								215	
			Coho							7							7	
			Jackchin		22						7							29
			Total	8	141	16	8		64	14								251
Wind R. System	Wind River above Shipherd Falls	677	Chinook		776	891											1,667	
			Jackchin		22												22	
			Total		798	891											1,689	
	Wind River below Shipherd Falls	680	Chinook	231	2,972	318	29	14	65	14								3,643
			Coho				7	7		79								93
			Jackchin		58	7		14	7	7								93
			Jackcoho						7							7		
			Total	231	3,030	325	36	35	72	107							3,836	
Middle Columbia System Totals			Chinook	723	6,307	1,496	198	361	4,615	3,950	110	8			7		17,775	
			Coho				7	14	184	1,504	765	80					2,554	
			Sockeye			7	7										14	
			Jackchin		298	96	58	171	1,475	1,572	36	15					3,721	
			Jackcoho						52	275	87	7					421	
			Total	723	6,605	1,599	270	546	6,326	7,301	998	110			7		24,485	

Table 23. 2012-2013 Freshwater Salmon Sport Catch by Area and Month (continued)

COLUMBIA RIVER SYSTEMS																
System	Stream	CRC Code	Species	2012								2013			Total	
				Apr	May	Jun	Jul	Aug	Sep	Oct	Nov	Dec	Jan	Feb		Mar
Okanogan R. System	Okanogan River	627	Chinook								15				15	
			Sockeye					76			8					84
			Jackchin							23						23
			Total					76		23	23					122
	Similkameen River	629	Chinook				167	76	379							622
			Sockeye				23	243	30							296
Jackchin						34	67	51							152	
Total						224	386	460							1,070	
Upper Columbia	Columbia McNary Dam to Hwy 395 Bridge	533	Chinook	7	15			81	74	279	22			7	485	
			Coho						15	23						38
			Jackchin						29	66	15					110
			Jackcoho						15	22						37
			Total	7	15			81	133	390	37				7	670
	Columbia Hwy 395 Bridge-old Hanford townsite	535	Chinook		7	7	15	133	2,888	5,170	22		15			8,257
			Coho						52	52						104
			Sockeye				228	22	7	7						264
			Jackchin				7	37	908	2,576						3,528
			Jackcoho						22	155	7					184
	Columbia Old Hanford townsite-Priest Rapids Dam	536	Chinook			30	7	15	1,445	3,740	15					5,252
			Coho						41	25						66
			Sockeye				37									37
			Jackchin			8	8	8	522	1,717						2,263
			Jackcoho						16	115	8					139
	Columbia Priest Rapids to Chief Joseph Dam	537	Chinook	30			1,900	3,247	1,276	907						7,360
			Sockeye			37	25,760	6,250	108	38						32,193
			Jackchin				341	717	321	286						1,665
			Jackcoho													
			Total	30		37	28,001	10,214	1,705	1,231						41,218

Table 23. 2012-2013 Freshwater Salmon Sport Catch by Area and Month (continued)

COLUMBIA RIVER SYSTEMS																			
System	Stream	CRC Code	Species	2012									2013			Total			
				Apr	May	Jun	Jul	Aug	Sep	Oct	Nov	Dec	Jan	Feb	Mar				
Wenatchee R. System	Icicle Creek	672	Chinook		178	587	186										951		
			Jackchin			37												37	
			Total		178	624	186												988
	Lake Wenatchee	670	Sockeye					12,789	764	7								13,560	
			Total					12,789	764	7									13,560
	Wenatchee River	674	Chinook					15										15	
Total							15											15	
Yakima R. System	Yakima River	690	Chinook		51	358	170			43	387						1,009		
			Coho								36							36	
			Jackchin			40	48			48	186								322
			Total		51	398	218			91	609								1,367
			Upper Columbia System Totals	Chinook	37	251	982	2,445	3,567	6,105	10,498	59			15		7		
	Coho							108	136								244		
	Sockeye			37	26,048	19,380	909	60									46,434		
	Jackchin			85	438	829	1,902	4,831	15								8,100		
	Jackcoho							53	292	15							360		
	Total		37	251	1,104	28,931	23,776	9,077	15,817	89		15		7			79,104		

Table 23. 2012-2013 Freshwater Salmon Sport Catch by Area and Month (continued)

COLUMBIA RIVER SYSTEMS																
System	Stream	CRC Code	Species	2012									2013			Total
				Apr	May	Jun	Jul	Aug	Sep	Oct	Nov	Dec	Jan	Feb	Mar	
Snake R. System	Snake River: below Ice Harbor	640	Chinook		1,255					2						1,257
			Jackchin		91					1						92
			Total		1,346					3						1,349
	Snake River: Ice Harbor to Lower Monumental Dam	642	Chinook							1	1					2
			Jackchin							7	15					22
			Total							8	16					24
	Snake River: Lower Monumental to Little Goose Dam	644	Chinook		997					81	220	1				1,299
		Jackchin		5					7	80	1				93	
		Total		1,002					88	300	2				1,392	
Snake River: Little Goose to Lower Granite Dam	646	Chinook		16					36	15					67	
		Jackchin							15	7					22	
		Total		16					51	22					89	
Snake River: Lower Granite to Interstate Bridge	648	Chinook		70					211	168					449	
		Jackchin							36	36					72	
		Total		70					247	204					521	
Snake River: upstream of Interstate Bridge	650	Chinook							36	160	4				200	
		Jackchin							7	197	4				208	
		Total							43	357	8				408	
Snake River System Totals			Chinook	2,338					367	564	5				3,274	
			Jackchin	96					73	335	5				509	
			Total	2,434					440	899	10				3,783	

Table 23. 2012-2013 Freshwater Salmon Sport Catch by Area and Month (continued)

PUGET SOUND RIVER SYSTEMS																		
System	Stream	CRC Code	Species	2012									2013			Total		
				Apr	May	Jun	Jul	Aug	Sep	Oct	Nov	Dec	Jan	Feb	Mar			
Chambers Cr. System	Chambers Creek	714	Chinook					15	76	53							144	
			Coho							38								38
			Jackchin					8			8							16
			Total					23	76	99								198
Deschutes R. System	Deschutes River	728	Chinook						3								3	
			Total						3								3	
Dewatto R. System	Dewatto River	732	Coho							13							13	
			Total							13							13	
Dungeness R. System	Dungeness River	738	Coho							537	356						893	
			Jackcoho							7	7						14	
			Total							544	363						907	
Green-Duwamish R. System	Green - Duwamish River	746	Chum							228	664	14					906	
			Coho						2,532	1,531	86	14					4,163	
			Jackcoho						148	121	34						303	
			Total						2,680	1,880	784	28					5,372	
Kennedy Cr. System	Kennedy Creek	754	Chum							159	121						280	
			Total						159	121							280	
Lake Washington System	Lake Sammamish	764	Chinook					22	148	59							229	
			Coho					7									7	
	Total					29	148	59								236		
	Lake Washington	762	Coho						79	55							134	
			Total						79	55							134	
Minter Cr. System	Minter Creek	778	Chum							99	4,528	1,193					5,820	
			Total						99	4,528	1,193						5,820	
Nisqually R. System	Nisqually River	786	Chinook			7	423	2,950	732	7							4,119	
			Chum						15	95	637		7				754	
			Coho					7	1,253	2,667	73						4,000	
			Jackchin					125	469	117							711	
			Jackcoho					7	167	101							275	
			Total			7	562	4,839	3,632	175	637		7				9,859	

Table 23. 2012-2013 Freshwater Salmon Sport Catch by Area and Month (continued)

PUGET SOUND RIVER SYSTEMS																	
System	Stream	CRC Code	Species	2012								2013			Total		
				Apr	May	Jun	Jul	Aug	Sep	Oct	Nov	Dec	Jan	Feb		Mar	
Nooksack Samish R. System	Dakota Creek (Whatcom Co)	724	Chum								7					7	
			Coho									56					56
			Total										63				
	Nooksack River	788	Chinook						49	14	7						70
			Chum							7	177	125					309
			Coho						1,009	1,385	184	14					2,592
			Jackchin						7	28							35
			Jackcoho						83	7	7						97
			Total						1,148	1,441	375	139					3,103
	Samish River	816	Chinook					585	5,759	3,157						9,501	
			Chum							22						22	
			Coho					7	49	43						99	
			Jackchin					64	198	120						382	
Jackcoho								49	7						56		
Total							656	6,055	3,349						10,060		
Whatcom Creek	884	Chinook						19	9						28		
		Chum									411				411		
		Coho						7	7						14		
		Total						26	16	411					453		
Puyallup R. System	Carbon River	802	Chinook						152						152		
			Coho						116	360	14				490		
			Jackchin						14						14		
			Jackcoho						7						7		
			Total						289	360	14				663		
	Puyallup River	804	Chinook					100	356	40					496		
			Chum							7	261	113			381		
			Coho					541	6,484	561	43	14			7,643		
			Jackchin					7	42	35					84		
			Jackcoho					80	377	58	22				537		
Total					728	7,259	701	326	127				9,141				

Table 23. 2012-2013 Freshwater Salmon Sport Catch by Area and Month (continued)

PUGET SOUND RIVER SYSTEMS																
System	Stream	CRC Code	Species	2012									2013			Total
				Apr	May	Jun	Jul	Aug	Sep	Oct	Nov	Dec	Jan	Feb	Mar	
Quilcene R. System	Quilcene River	812	Coho					817	5,009	210						
			Jackcoho						7							
			Total					817	5,016	210						
Skagit R. System	Baker Lake	825	Sockeye				4,837	4,731	287							
			Total				4,837	4,731	287							
	Cascade River	826	Chinook			80	44									
			Coho						118	1,049	273					
			Jackchin			51	15									
	Skagit River	830	Total			131	59			118	1,049	273				
			Chinook			73										
			Coho							1,465	2,776	447	44			
			Sockeye			575	2,489									
			Jackcoho							22	51					
Skokomish R. System	Skokomish River	834	Total			648	2,489		1,487	2,827	447	44				
			Chinook					5,435	2,733	8						
			Chum								137	601	22			
			Coho					58	496	951	338					
			Jackchin					101	22	22						
			Jackcoho					72	29	43	22					
Snohomish R. System	Skykomish River	844	Total					5,666	3,280	1,161	961	22				
			Chinook				78	50								
			Chum								74	309	36			
			Coho							202	998	257	15			
			Jackchin			29	14									
			Jackcoho								29					
	Snohomish River	850	Total			107	64	202	1,101	566	51					
			Chum								14	14				
			Coho							2,051	2,757	15				
			Jackcoho							7	21					
Total							2,058	2,792	29							

Table 23. 2012-2013 Freshwater Salmon Sport Catch by Area and Month (continued)

PUGET SOUND RIVER SYSTEMS																	
System	Stream	CRC Code	Species	2012									2013			Total	
				Apr	May	Jun	Jul	Aug	Sep	Oct	Nov	Dec	Jan	Feb	Mar		
Snohomish R. System (cont.)	Snoqualmie River	852	Chum							7			7				14
			Coho						14	321	185	86				606	
			Total						14	328	185	93				620	
	Stillaguamish River	872	Coho						350	863	7				1,220		
			Jackcoho						14						14		
			Total						350	877	7				1,234		
Tahuya R. System	Tahuya River	878	Coho							1,137	21						1,158
			Jackcoho							42					42		
			Total							1,179	21				1,200		
Puget Sound System Totals			Chinook			153	129	6,630	12,245	4,072	14						23,243
			Chum							776	7,181	2,147	7			10,111	
			Coho					1,437	21,234	18,315	2,299	187				43,472	
			Sockeye		575	7,326	4,731	287								12,919	
			Jackchin		51	44	319	752	330							1,496	
			Jackcoho					159	896	501	92						1,648
			Total		779	7,499	13,276	35,414	23,994	9,586	2,334	7					92,889

Table 23. 2012-2013 Freshwater Salmon Sport Catch by Area and Month (continued)

UNKNOWN AREAS																		
System	Stream	CRC Code	Species	2012									2013			Total		
				Apr	May	Jun	Jul	Aug	Sep	Oct	Nov	Dec	Jan	Feb	Mar			
Unknown Area Totals			Chinook	96	48	73	195	329	568	296	32	27			20			1,684
			Chum						31	50	100	33						214
			Coho			11	263	266	1,266	448	148	28	9					2,439
			Sockeye				53											53
			Jackchin	7	15	22	22	7	45	44								162
			Jackcoho						27	36	9							72
			Total	103	63	106	533	602	1,937	874	289	88	9	20				4,624

Table 23. 2012-2013 Freshwater Salmon Sport Catch by Area and Month (continued)

STATEWIDE TOTALS																
System	Stream	CRC Code	Species	2012									2013			Total
				Apr	May	Jun	Jul	Aug	Sep	Oct	Nov	Dec	Jan	Feb	Mar	
Statewide Totals			Chinook	8,686	11,908	5,323	3,671	20,541	41,134	24,643	772	208	49	60	896	117,891
			Chum						31	826	7,288	2,180	7			10,332
			Coho			11	353	3,083	26,411	33,099	9,563	2,359	94			74,973
			Sockeye		1	2,258	33,720	24,125	1,224	67						61,395
			Jackchin	165	760	529	666	1,661	7,079	8,362	86	37	15		1	19,361
			Jackcoho				28	166	1,715	3,417	491	102				5,919
			Total	8,851	12,669	8,121	38,438	49,576	77,594	70,414	18,200	4,886	165	60	897	289,871

Table 24. 2012-2013 Washington Sport Salmon Fishing, by Residence

County of Residence	Number Catch Record Cards	Population by County	% Catch Record Card Holders	Total Freshwater Salmon Catch	Total Marine Salmon Catch	Total Salmon	Average Catch per Card
Adams	1,215	19,005	6.4	644	537	1,181	0.97
Asotin	2,030	21,888	9.3	561	30	591	0.29
Benton	16,150	182,398	8.9	10,055	2,393	12,448	0.77
Chelan	7,275	73,687	9.9	15,701	823	16,524	2.27
Clallam	10,717	71,863	14.9	3,097	25,884	28,981	2.7
Clark	38,651	438,287	8.8	21,848	4,636	26,484	0.69
Columbia	528	3,995	13.2	139	32	171	0.32
Cowlitz	19,166	101,996	18.8	16,090	1,406	17,496	0.91
Douglas	3,471	39,350	8.8	6,354	479	6,833	1.97
Ferry	322	7,705	4.2	485	182	667	2.07
Franklin	6,391	85,845	7.4	3,776	667	4,443	0.7
Garfield	331	2,228	14.9	118	116	234	0.71
Grant	4,553	91,723	5.0	3,374	1,616	4,990	1.1
Grays Harbor	11,553	71,692	16.1	9,376	10,302	19,678	1.7
Island	11,876	79,177	15.0	1,753	12,147	13,900	1.17
Jefferson	4,070	29,854	13.6	1,684	5,831	7,515	1.85
King	98,705	2,007,440	4.9	32,221	61,572	93,793	0.95
Kitsap	23,209	254,991	9.1	4,435	21,981	26,416	1.14
Kittitas	2,745	41,672	6.6	2,522	1,306	3,828	1.39
Klickitat	2,961	20,699	14.3	4,386	41	4,427	1.5
Lewis	10,310	75,621	13.6	7,130	2,730	9,860	0.96
Lincoln	707	10,437	6.8	444	123	567	0.8
Mason	6,880	60,832	11.3	4,137	7,051	11,188	1.63
Okanogan	3,599	41,275	8.7	4,608	504	5,112	1.42
Pacific	3,925	20,575	19.1	3,305	3,389	6,694	1.71
Pend Oreille	410	12,980	3.2	700	508	1,208	2.95
Pierce	63,151	811,681	7.8	27,156	35,220	62,376	0.99
San Juan	2,025	15,824	12.8	62	1,552	1,614	0.8
Skagit	17,134	118,222	14.5	13,248	6,449	19,697	1.15
Skamania	1,310	11,187	11.7	1,690	105	1,795	1.37
Snohomish	63,568	733,036	8.7	21,425	44,877	66,302	1.04
Spokane	14,578	475,735	3.1	11,551	2,875	14,426	0.99
Stevens	1,416	43,538	3.3	1,344	425	1,769	1.25
Thurston	23,093	258,332	8.9	11,627	11,583	23,210	1.01
Wahkiakum	1,201	3,993	30.1	1,497	24	1,521	1.27
Walla Walla	4,434	59,404	7.5	1,892	330	2,222	0.5
Whatcom	18,126	205,262	8.8	7,283	4,177	11,460	0.63
Whitman	1,923	46,606	4.1	298	438	736	0.38
Yakima	15,157	246,977	6.1	10,124	2,972	13,096	0.86
Unknown WA	1,255			811	431	1,242	0.99
Washington Total	520,121	6,897,012	7.5	268,951	277,744	546,695	1.05
Other State Total	44,136			20,538	17,022	37,560	0.85
Canada	1,672			360	258	618	0.37
Other	447			21	22	43	0.1
Grand Total	566,376			289,870	295,046	584,916	1.03

Source: Table 1: Annual Estimates of the Resident Population for Counties of Washington: April 1, 2010 to July 1, 2012. Source: Population Division, U.S. Census Bureau. Release Date: December 2012.

Table 25. 2012-2013 Frequency Distribution of Estimated Salmon Catch Record Cards and Catch

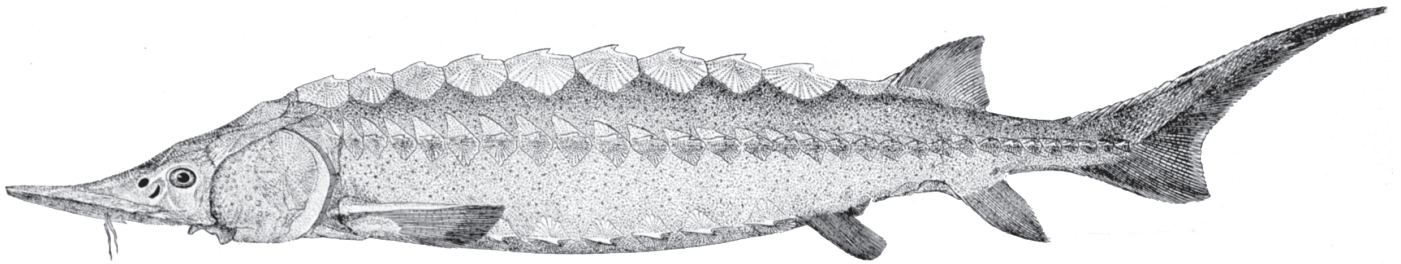
#Salmon per Catch Record Card	Number of Cards	Cumulative Number of Cards	Percent Cards	Cumulative Percent Cards	Total Catch	Cumulative Total Catch	Percent Catch	Cumulative Percent Catch
0	449,951	449,951	79.44%	79.44%	0	0	0.00%	0.00%
1	33,331	483,282	5.89%	85.33%	33,331	33,331	5.70%	5.70%
2	24,237	507,519	4.28%	89.61%	48,474	81,805	8.29%	13.99%
3	11,172	518,691	1.97%	91.58%	33,516	115,321	5.73%	19.72%
4	9,078	527,769	1.60%	93.18%	36,312	151,633	6.21%	25.93%
5	6,142	533,911	1.08%	94.27%	30,710	182,343	5.25%	31.18%
6	5,152	539,063	0.91%	95.18%	30,912	213,255	5.28%	36.46%
7	3,859	542,922	0.68%	95.86%	27,013	240,268	4.62%	41.08%
8	3,259	546,181	0.58%	96.44%	26,072	266,340	4.46%	45.54%
9	2,505	548,686	0.44%	96.88%	22,545	288,885	3.85%	49.39%
10	2,034	550,720	0.36%	97.24%	20,340	309,225	3.48%	52.87%
11	1,933	552,653	0.34%	97.58%	21,263	330,488	3.64%	56.51%
12	1,704	554,357	0.30%	97.88%	20,448	350,936	3.50%	60.01%
13	1,232	555,589	0.22%	98.10%	16,016	366,952	2.74%	62.75%
14	1,192	556,781	0.21%	98.31%	16,688	383,640	2.85%	65.60%
15	1,051	557,832	0.19%	98.49%	15,765	399,405	2.70%	68.30%
16	923	558,755	0.16%	98.66%	14,768	414,173	2.52%	70.82%
17	795	559,550	0.14%	98.80%	13,515	427,688	2.31%	73.13%
18	700	560,250	0.12%	98.92%	12,600	440,288	2.15%	75.28%
19	539	560,789	0.10%	99.01%	10,241	450,529	1.75%	77.03%
20	680	561,469	0.12%	99.13%	13,600	464,129	2.33%	79.36%
21	478	561,947	0.08%	99.22%	10,038	474,167	1.72%	81.08%
22	519	562,466	0.09%	99.31%	11,418	485,585	1.95%	83.03%
23	424	562,890	0.07%	99.39%	9,752	495,337	1.67%	84.70%
24	471	563,361	0.08%	99.47%	11,304	506,641	1.93%	86.63%
25	444	563,805	0.08%	99.55%	11,100	517,741	1.90%	88.53%
26	2,418	566,223	0.43%	99.97%	62,868	580,609	10.75%	99.28%
27	101	566,324	0.02%	99.99%	2,727	583,336	0.47%	99.75%
28	7	566,331	0.00%	99.99%	196	583,532	0.03%	99.78%
29	7	566,338	0.00%	99.99%	203	583,735	0.03%	99.81%
31	7	566,345	0.00%	100.00%	217	583,952	0.04%	99.85%
33	7	566,352	0.00%	100.00%	231	584,183	0.04%	99.89%
36	7	566,359	0.00%	100.00%	252	584,435	0.04%	99.93%
37	13	566,372	0.00%	100.00%	481	584,916	0.08%	100.00%
Total	566,372		100.00%		584,916		100.00%	

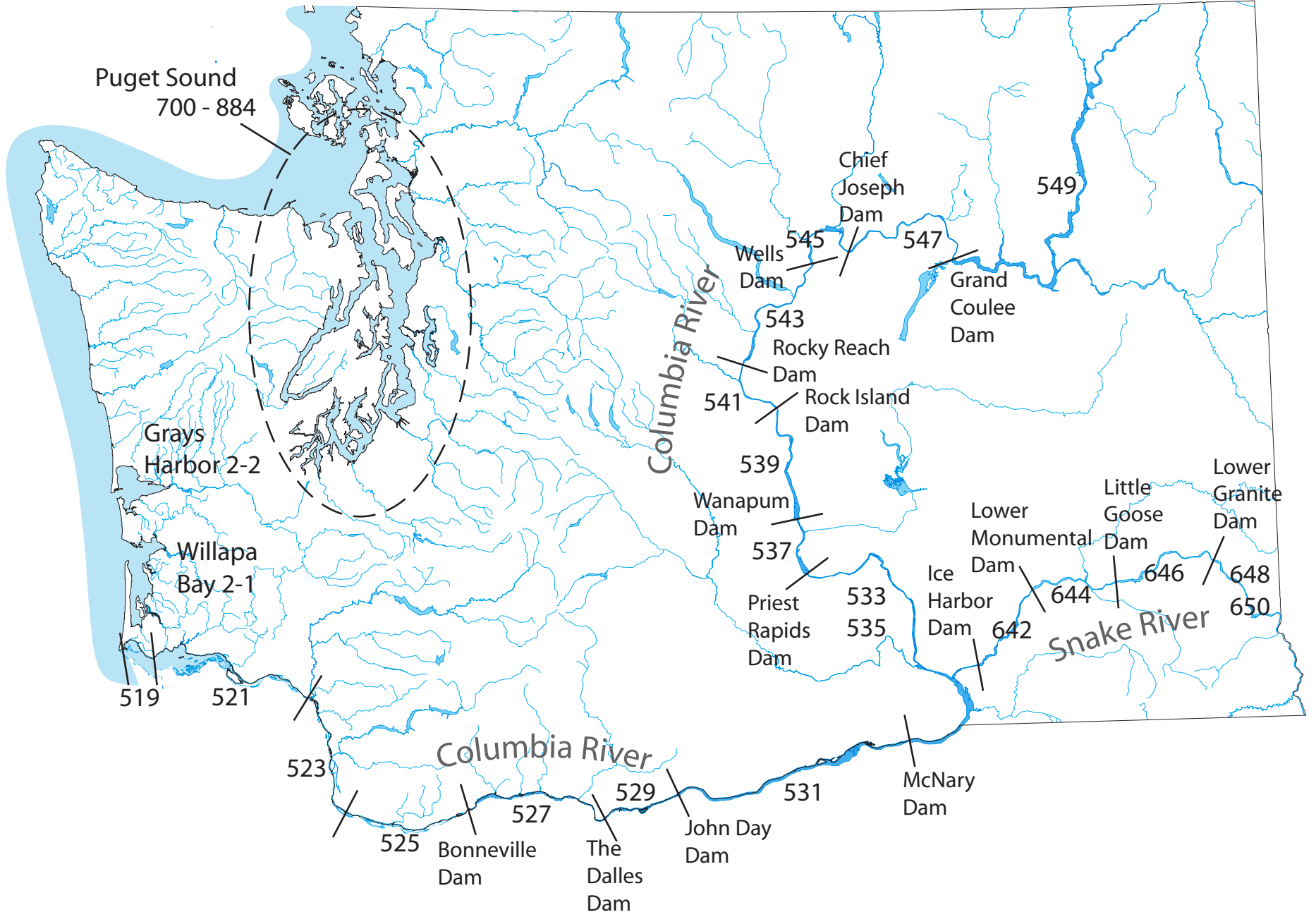
*Note: A single card has room for twenty-six salmon entries. Cards showing more than that were filled out incorrectly, with more than one salmon per line.

Table 26. 2012-2013 Sport Salmon Inventory of Catch Record Cards Received

Response Type	With Catch	No catch	Total Reports	Number of Salmon	Catch per Card
Prior to reminder	2,357	10,751	13,108	11,063	0.84
After 1st reminder postcard	12,688	27,937	40,625	67,041	1.65
After 2nd reminder postcard	1,091	3,831	4,922	4,585	0.93
After 3rd reminder postcard	438	3,876	4,314	1,730	0.40
From license dealer	720	1,179	1,899	2,439	1.28
Total	17,294	47,574	64,868	141,785	2.19

Sturgeon





DESCRIPTION OF STURGEON CATCH RECORD CARD AREAS

Columbia River

519	Buoy 10 to Megler - Astoria Bridge
521	Megler - Astoria Bridge to Longview Bridge
523	Longview Bridge to I-5 Bridge
525	I-5 Bridge to Bonneville Dam
527	Bonneville to the Dalles Dam
529	The Dalles Dam to John Day Dam
531	John Day to McNary Dam
533	McNary Dam to Pasco
535	Pasco to Priest Rapids Dam
537	Priest Rapids Dam to Wanapum Dam
539	Wanapum to Rock Island Dam
541	Rock Island to Rocky Reach Dam
543	Rocky Reach to Wells Dam
545	Wells to Chief Joseph Dam
547	Chief Joseph to Grand Coulee Dam
549	Grand Coulee Dam to Canadian Border

Snake River

640	Below Ice Harbor Dam
642	Ice Harbor to Lower Monumental Dam
644	Lower Monumental to Little Goose Dam
646	Little Goose to Lower Granite Dam
648	Lower Granite to Clarkston
650	Upstream of Interstate Bridge, Clarkston

Other - including Puget Sound

2-1	Willapa Bay
2-2	Grays Harbor
700 - 884	Puget Sound

Table 27. 2012-2013 Sport Sturgeon Catch, by Area and Month

COASTAL RIVER SYSTEMS															
Catch Area	Species	2012										2013			Total
		Apr	May	Jun	Jul	Aug	Sep	Oct	Nov	Dec	Jan	Feb	Mar		
Chehalis R. below Black R.	White		9			26	9	26						9	79
Naselle River	White			26	9	18									53
Willapa River	White		9	35	18										62
Total	White		18	62	26	44	9	26					9	193	

Table 27. 2012-2013 Sport Sturgeon Catch, by Area and Month (continued)

COLUMBIA RIVER SYSTEMS															
Catch Area	Species	2012										2013			Total
		Apr	May	Jun	Jul	Aug	Sep	Oct	Nov	Dec	Jan	Feb	Mar		
Columbia R 01: Buoy 10 to Megler-Astoria Bridge	White		75	938	204										1,217
	Green			2											2
Columbia R 02: Megler-Astoria Bridge to Longview Bridge	White	3	74	1,030	367										1,474
	Green			1											1
Columbia R 03: Longview Br. to I-5 Bridge	White	9	123	254	260						18	12	20	696	
Columbia R 04: I-5 Bridge to Bonneville Dam	White	1	23	29	20								1	74	
Columbia R 05: Bonneville to The Dalles Dam	White			392							69	129		590	
Columbia R 06: The Dalles to John Day Dam	White		39	18	5	32	17				5	24	10	150	
Columbia R 07: John Day to McNary Dam	White	16	46								11	15	5	93	
Columbia R 08: McNary Dam - Hwy 395 Bridge in Pasco	White				1						9	9	9	27	
Columbia R 09: Hwy 395 Bridge to old Hanford townsite	White		9	9	18								9	44	
Cowlitz R. below Mayfield Dam	White	35	18		9						26	9		97	
Deep River (Wahkiakum Co.)	White				9									9	
Wind River below Shipherd Falls	White			26										26	

Table 27. 2012-2013 Sport Sturgeon Catch, by Area and Month (continued)

COLUMBIA RIVER SYSTEMS															
Catch Area	Species	2012										2013			Total
		Apr	May	Jun	Jul	Aug	Sep	Oct	Nov	Dec	Jan	Feb	Mar		
Snake R 2: Ice Harbor to Lower Monumental Dam	White			9	62	9									79
Snake R 3: Lower Monumental to Little Goose Dam	White				18	18	18	9							62
Snake R 4: Little Goose to Lower Granite Dam	White	9	62	35	62			9						176	
Total	White	73	469	2,740	1,035	59	35	18				138	198	54	4,819
	Green				3										3
	Total	73	469	2,740	1,038	59	35	18				138	198	54	4,822

Table 27. 2012-2013 Sport Sturgeon Catch, by Area and Month (continued)

PUGET SOUND RIVER SYSTEMS															
Catch Area	Species	2012										2013			Total
		Apr	May	Jun	Jul	Aug	Sep	Oct	Nov	Dec	Jan	Feb	Mar		
Area 8-2: Port Susan-Port Gardner	White			62											62
Snohomish River	White			18											18
Stillaguamish River	White						9								9
Total	White			79			9								88

Table 27. 2012-2013 Sport Sturgeon Catch, by Area and Month (continued)

UNKNOWN RIVER SYSTEMS															
Catch Area	Species	2012										2013			Total
		Apr	May	Jun	Jul	Aug	Sep	Oct	Nov	Dec	Jan	Feb	Mar		
Unknown Area Totals	White	41	30	112	41		10	10				10	10		264

Table 27. 2012-2013 Sport Sturgeon Catch, by Area and Month (continued)

STATEWIDE TOTALS															
Catch Area	Species	2012										2013			Total
		Apr	May	Jun	Jul	Aug	Sep	Oct	Nov	Dec	Jan	Feb	Mar		
Statewide Totals	White	114	517	2993	1102	103	63	54				148	208	63	5,365
	Green			3											3
	Total	114	517	2,996	1,102	103	63	54				148	208	63	5,368

Table 28. 2012-2013 Washington Sport Sturgeon Fishing, by Residence

County of Residence	Number Catch Record Cards	Population by County	% Catch Record Holders	Total Sturgeon	Average Catch per Catch Record Card
Adams	1,215	19,005	6.4		
Asotin	2,030	21,888	9.3		
Benton	16,150	182,398	8.9		
Chelan	7,275	73,687	9.9		
Clallam	10,717	71,863	14.9		
Clark	38,651	438,287	8.8		
Columbia	528	3,995	13.2		
Cowlitz	19,166	101,996	18.8		
Douglas	3,471	39,350	8.8		
Ferry	322	7,705	4.2		
Franklin	6,391	85,845	7.4		
Garfield	331	2,228	14.9		
Grant	4,553	91,723	5.0		
Grays Harbor	11,553	71,692	16.1		
Island	11,876	79,177	15.0		
Jefferson	4,070	29,854	13.6		
King	98,705	2,007,440	4.9		
Kitsap	23,209	254,991	9.1		
Kittitas	2,745	41,672	6.6		
Klickitat	2,961	20,699	14.3		
Lewis	10,310	75,621	13.6		
Lincoln	707	10,437	6.8		
Mason	6,880	60,832	11.3		
Okanogan	3,599	41,275	8.7		
Pacific	3,925	20,575	19.1		
Pend Oreille	410	12,980	3.2		
Pierce	63,151	811,681	7.8		
San Juan	2,025	15,824	12.8		
Skagit	17,134	118,222	14.5		
Skamania	1,310	11,187	11.7		
Snohomish	63,568	733,036	8.7		
Spokane	14,578	475,735	3.1		
Stevens	1,416	43,538	3.3		
Thurston	23,093	258,332	8.9		
Wahkiakum	1,201	3,993	30.1		
Walla Walla	4,434	59,404	7.5		
Whatcom	18,126	205,262	8.8		
Whitman	1,923	46,606	4.1		
Yakima	15,157	246,977	6.1		
Unknown WA	1,255				
Washington Total	520,121	6,897,012	7.5		
Other State Total	44,136				
Canada	1,672				
Other	447				
Grand Total	566,376				

Note: The figures do not accurately multiply across because of the bias adjustment factor and rounding of numbers.

Source: Table 1: Annual Estimates of the Resident Population for Counties of Washington: April 1, 2010 to July 1, 2012. Source: Population Division, U.S. Census Bureau. Release Date: December 2012.

Table 29. 2012-2013 Frequency Distribution of Estimated Sturgeon Catch Record Cards and Catch

#Sturgeon per Catch Record Card	Number of Cards	Cumulative Number of Cards	Percent Cards	Cumulative Percent Cards	Total Catch	Cumulative Total Catch	Percent Catch	Cumulative Percent Catch
0	562,612	562,612	99.3%	99.3%	0	0	0.0%	0.0%
1	2,757	565,369	0.5%	99.8%	2,757	2,757	51.4%	51.4%
2	605	565,974	0.1%	99.9%	1,210	3,967	22.5%	73.9%
3	237	566,211	0.0%	100.0%	711	4,678	13.3%	87.2%
4	115	566,326	0.0%	100.0%	460	5,138	8.6%	95.7%
5	46	566,372	0.0%	100.0%	230	5,368	4.3%	100.0%
Total	566,372		100.0%		5,368		100.0%	

Table 30. 2012-2013 Sport Sturgeon Inventory of Catch Record Cards Reported

Response Type	With Catch	No catch	Total Reports	Number of Sturgeon	Catch per Card
Prior to reminder	35	13,073	13,108	46	0.00
After 1st reminder postcard	385	40,240	40,625	569	0.01
After 2nd reminder postcard	32	4,890	4,922	38	0.01
After 3rd reminder postcard	14	4,300	4,314	15	0.00
From license dealer	25	1,874	1,899	33	0.02
Total	491	64,377	64,868	701	0.01

Steelhead

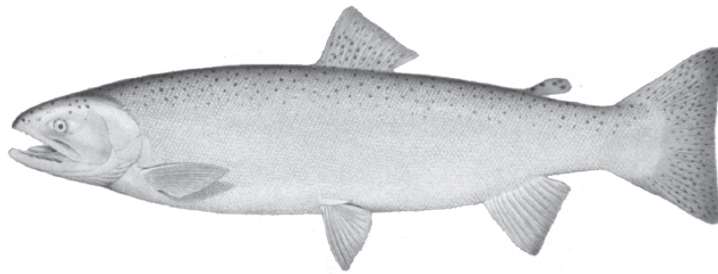


Table 31. 2012-2013 Steelhead Sport Catch, by Area and Month

COASTAL RIVERS AND MARINE CATCH AREAS																
System	Water	Race	Mark Type	2012									2013			Total
				Apr	May	Jun	Jul	Aug	Sep	Oct	Nov	Dec	Jan	Feb	Mar	
Chehalis R. System	Chehalis R. above Black R.	S	Marked			3	3									6
		W	Marked									8	105	119	19	251
	Chehalis R. below Black R.	S	Marked				3	30	14	11						58
		W	Marked	6								8	39	161	97	17
	Cloquallam Creek	W	Marked									3				3
	Newaukum River	S	Marked							3						3
		W	Marked										3	3		6
	Satsop River	S	Marked			3	8	3	5	3						22
		W	Marked									3	103	249	216	83
	Satsop River, West Fork	S	Marked					3	3							6
		W	Marked									3		33	25	61
	Skookumchuck River	S	Marked				3	14		5						22
		W	Marked	430								3	30	199	544	1,024
	Van Winkle Creek	S	Marked				14	3		3						20
		W	Marked											8	3	11
	Wishkah River	S	Marked							5						5
		W	Marked											8		8
Wynoochee River	S	Marked			696	1,092	576	139	68						2,571	
	W	Marked	3								14	585	1,394	1,308	549	3,853
Chehalis R. System Totals	S	Marked			702	1,123	629	161	98						2,713	
	W	Marked	439								28	771	2,160	2,315	1,692	7,405
Copalis R. System	Copalis River	W	Marked									3	5	7	15	
Goodman Cr. System	Goodman Creek (Jefferson Co.)	S	Marked						5						5	
		W	Marked												2	2

Table 31. 2012-2013 Steelhead Sport Catch, by Area and Month (continued)

COASTAL RIVERS AND MARINE CATCH AREAS																
System	Water	Race	Mark Type	2012								2013			Total	
				Apr	May	Jun	Jul	Aug	Sep	Oct	Nov	Dec	Jan	Feb		Mar
Hoh R. System	Hoh River above Hwy 101	S	Marked					14	19	6					39	
		W	Marked	4								48	17		69	
			Unmarked									4		4	8	
		Total	4								52	17	4	77		
	Hoh River below Hwy 101	S	Marked		6	3	3	61	36	6					115	
		W	Marked	22							4	26	126	61	26	265
			Unmarked	26								4			13	70
		Total	48								4	30	126	74	96	378
	Hoh River, So. Fork	W	Marked											9	9	
	Hoh R. System Totals	S	Marked		6	3	3	75	55	12					154	
W		Marked	26							4	26	174	78	35	343	
		Unmarked	26								4		4	13	74	121
	Total	52								4	30	178	91	109	464	
Hoquiam R. System	Hoquiam River	W	Marked								2	2		4		
Humptulips R. System	Humptulips River	S	Marked		249	608	236	52	140						1,285	
		W	Marked							74	348	166	86	24	698	
	Humptulips River, E. Fork	S	Marked		4										4	
		W	Marked								3				3	
	Humptulips River, W. Fork	S	Marked		4	4	13								21	
		W	Marked									3			3	
	Stevens Creek	W	Marked								42	3	3		48	
	Humptulips R. System Totals	S	Marked		253	616	249	52	140						1,310	
W		Marked								74	393	172	89	24	752	
Johns R. System	Johns River	W	Marked									2		2		
Kalaloch Cr. System	Kalaloch Creek	W	Marked									2	3	5		

Table 31. 2012-2013 Steelhead Sport Catch, by Area and Month (continued)

COASTAL RIVERS AND MARINE CATCH AREAS																
System	Water	Race	Mark Type	2012									2013			Total
				Apr	May	Jun	Jul	Aug	Sep	Oct	Nov	Dec	Jan	Feb	Mar	
Marine Water	Area 1: Col R - Ledbetter	S	Marked			6	12	79	37	55						189
		W	Marked								14	34		7		55
	Area 2-1: Willapa Bay	S	Marked					11	5							16
		W	Marked											6		6
	Marine Water Totals	S	Marked			6	12	90	42	55						205
W		Marked								14	34		13		61	
Marine Water	Area 2: Westport	S	Marked			26	32	21	21						100	
		W	Marked									6			6	
	Area 2-2: Grays Harbor	S	Marked				26	11	42						79	
		W	Marked									6			6	
	Area 3: La Push	S	Marked				11	11	5	11					38	
		W	Marked			6						6			12	
	Area 4: Cape Flattery	S	Marked				5		11						16	
		W	Marked			6									6	
Marine Water Totals	S	Marked			26	74	43	79	11					233		
	W	Marked			12						6	12		30		
Naselle R. System	Naselle River	S	Marked						2	7					9	
		W	Marked								12	86	70	27	12	207
	Salmon Creek (Pacific Co.)	W	Marked									8			8	
	Naselle R. System Totals	S	Marked							2	7				9	
W		Marked									12	94	70	27	12	215
Nemah R. System	Nemah River	W	Marked									22	3	7	2	34
North R. System	North River	S	Marked						5						5	
		W	Marked									38	53	22	113	
	Smith Creek (Pacific Co.)	W	Marked									2	3	3	8	
	North R. System Totals	S	Marked							5					5	
W		Marked										40	56	25	121	
Palix R. System	Niawiakum River	S	Marked								9			9		

Table 31. 2012-2013 Steelhead Sport Catch, by Area and Month (continued)

COASTAL RIVERS AND MARINE CATCH AREAS															
System	Water	Race	Mark Type	2012								2013			Total
				Apr	May	Jun	Jul	Aug	Sep	Oct	Nov	Dec	Jan	Feb	
Queets R. System	Clearwater River	S	Marked	3											3
		W	Marked	4								11 2			17
			Unmarked	3								5 14			22
	Queets River	S	Marked	5 3 8 5											21
		W	Marked									11 9			62
	Salmon River (Jefferson Co.)	S	Marked	3											3
		W	Marked									7 32			52
	Queets R. System Totals	S	Marked	3 8 3 8 5											27
		W	Marked	4								18 41			131
			Unmarked	3								5 14			22
		Total	7								18 41			153	
Quillayute R. System	Bogachiel River	S	Marked	64 135 81 19 13											312
		W	Marked	33								323 1,276			2,219
			Unmarked	30								3 23 66			122
			Total	63								323 1,276			2,341
	Calawah River	S	Marked	282 274 92 96 148											892
			Unmarked									2			2
		Total	282 274 92 98 148											894	
		W	Marked	16								53			105
			Unmarked	7								3 13			23
		Total	23								53			128	
	Dickey River (Clallam Co.)	S	Marked	6 2											8
		W	Marked									7			7
			Unmarked									7 7			14
		Total									7 7			14	
Quillayute River	S	Marked	2 2 2 9 4											19	
	W	Marked									36 99			182	
		Unmarked	3								36			39	
		Total	3								36 99			221	

Table 31. 2012-2013 Steelhead Sport Catch, by Area and Month (continued)

COASTAL RIVERS AND MARINE CATCH AREAS																	
System	Water	Race	Mark Type	2012									2013			Total	
				Apr	May	Jun	Jul	Aug	Sep	Oct	Nov	Dec	Jan	Feb	Mar		
Quillayute R. System (cont.)	Sol Duc River	S	Marked		53	96	156	56	24	56						441	
			Unmarked				2									2	
			Total		53	96	156	58	24	56						443	
		W	Marked	30								10	39	82	92	66	319
			Unmarked	59											33	69	161
			Total	89								10	39	82	125	135	480
	Quillayute R. System Totals	S	Marked		55	442	567	237	148	223						1,672	
			Unmarked				2	2								4	
		Total		55	442	567	239	150	223							1,676	
		W	Marked	79								422	1,414	478	277	162	2,832
Unmarked	99											3	59	191	352		
		Total	178							422	1,414	481	336	353	3,184		
Quinault R. System	Quinault Lake	S	Marked				5			5					10		
		W	Marked									3	9	10	22		
	Quinault R, Lower (below L. Quinault, not Cook Cr.)	S	Marked			5	5									10	
		W	Marked												5	5	
	Quinault R, Upper (above L. Quinault)	W	Marked										2	5	12	19	
			Unmarked											2	9	11	
			Total										2	7	21	30	
	Quinault R. System Totals	S	Marked			5	5	5			5					20	
Marked												3	11	15	17	46	
W		Unmarked												2	9	11	
		Total										3	11	17	26	57	
Suez R. System	Sooes River (Clallam Co.)	W	Marked										2		2		

Table 31. 2012-2013 Steelhead Sport Catch, by Area and Month (continued)

COASTAL RIVERS AND MARINE CATCH AREAS																			
System	Water	Race	Mark Type	2012								2013			Total				
				Apr	May	Jun	Jul	Aug	Sep	Oct	Nov	Dec	Jan	Feb		Mar			
Willapa R. System	Willapa R, So. Fork	S	Marked	3											3				
		W	Marked									7	49	39	49	144			
	Willapa River	S	Marked									3	3				6		
		W	Marked									46	113	169	95	25	448		
	Willapa R. System Totals	S	Marked	3								3	3				9		
		W	Marked									53	162	208	144	25	592		
Coastal Rivers/Streams and Marine Catch Area Totals		S	Marked	61 1,440 2,408 1,334 555 573											6,371				
			Unmarked	2 2											4				
			Total	61 1,440 2,408 1,336 557 573											6,375				
		W	Marked	560								627	3,011	3,399	3,020	1,975	12,592		
			Unmarked	128											4	7	79	288	506
			Total	688											627 3,015	3,406 3,099 2,263	13,098		

Table 31. 2012-2013 Steelhead Sport Catch, by Area and Month (continued)

COLUMBIA RIVER AND TRIBUTARIES																	
System	Water	Race	Mark Type	2012								2013			Total		
				Apr	May	Jun	Jul	Aug	Sep	Oct	Nov	Dec	Jan	Feb		Mar	
Abernathy Cr. System	Abernathy Creek	S	Marked	2											2		
		W	Marked	1											3	1	1
Columbia R. Mainstem	Columbia R 01: Buoy 10 to Tongue Pt.- Rocky Pt.	S	Marked	23 11 40 3 6											83		
		W	Marked	3											3		

Table 31. 2012-2013 Steelhead Sport Catch, by Area and Month (continued)

COLUMBIA RIVER AND TRIBUTARIES																
System	Water	Race	Mark Type	2012									2013			Total
				Apr	May	Jun	Jul	Aug	Sep	Oct	Nov	Dec	Jan	Feb	Mar	
Columbia R. Mainstem	Columbia R 02: Tongue Pt. Rocky Pt. to Longview Br.	S	Marked	729	3,502	4,867	1,422	196	9							10,725
		W	Marked	255							3	10	8	3	78	357
	Columbia R 03: Longview Br. to I-5 Br.	S	Marked	71	220	2,948	1,687	308	54							5,288
		W	Marked	91							3	5	3	5	28	135
	Columbia R 04: I-5 Br. to Bonneville Dam	S	Marked	6	37	1,013	1,481	152	28							2,717
			Unmarked				2									2
			Total	6	37	1,013	1,483	152	28							2,719
		W	Marked	38										5	3	46
	Columbia R 05: Bonneville to The Dalles Dam	S	Marked	8	8	176	541	122	42	6	6	3	3		915	
	Columbia R 06: The Dalles to John Day Dam	S	Marked	3	8	85	127	107	113	45	54	11	17	3	573	
	Columbia R 07: John Day to McNary Dam	S	Marked	11	17	23	51	51	212	243	99	23	28	119	877	
	Columbia R 08: McNary Dam - Hwy 395 Bridge @ Pasco	S	Marked		6	20	130	1,056	1,268	517	277	175	54	23	3,526	
	Columbia R 09: Hwy 395 Bridge to old Hanford townsite	S	Marked	217					14	333	358	141	59	107	285	1,514
	Columbia R 12: Rock Island to Rocky Reach Dam	S	Marked							17	6	8	3	14	6	54
Columbia R 13: Rocky Reach to Wells Dam	S	Marked						3	99	161	99	51	51	68	532	

Table 31. 2012-2013 Steelhead Sport Catch, by Area and Month (continued)

COLUMBIA RIVER AND TRIBUTARIES																	
System	Water	Race	Mark Type	2012									2013			Total	
				Apr	May	Jun	Jul	Aug	Sep	Oct	Nov	Dec	Jan	Feb	Mar		
Columbia R. Mainstem (cont.)	Columbia R 14: Wells to Chief Joseph Dam	S	Marked							547	604	76	14	28	121	1,390	
	Columbia R. Mainstem Totals	S	Marked	217	828	3,821	9,143	5,479	2,012	2,728	1,940	760	339	302	625	28,194	
			Unmarked	2												2	
		Total	217	828	3,821	9,143	5,481	2,012	2,728	1,940	760	339	302	625	28,196		
	W	Marked	387								9	15	11	13	109	544	
Cowlitz R. System	Blue Creek (Lewis Co.)	W	Marked									135	224			359	
	Coweeman River	W	Marked								3	23	44	6	3	79	
	Cowlitz R. above Cowlitz Falls Dam	S	Marked			6			3								9
		W	Marked	3								3	3			6	15
	Cowlitz R. below Mayfield Dam	S	Marked		406	1,103	3,764	2,621	790	240							8,924
		W	Marked	3,715								344	1,980	711	446	1,741	8,937
	Cowlitz R. between Mayfield & Cowlitz Falls Dams	S	Marked		6		14	3	6	8							37
		W	Marked									6	3			3	12
	Green River (Cowlitz Co.)	S	Marked		107	790	460	54	3	11							1,425
		W	Marked									6	3				9
	Olequa Creek (Cowlitz Co.)	S	Marked							3							3
	Tilton River	S	Marked				6			3	23						32
		W	Marked									6					6
	Toutle River	S	Marked				3	6	3	3							15
	Toutle River, No. Fork	S	Marked			25	6	28	17	17							93
Toutle River, So. Fork	S	Marked		8	23	14	17	6	23							91	
	W	Marked													3	3	
Cowlitz R. System Totals	S	Marked		527	1,947	4,267	2,732	831	325							10,629	
	W	Marked	3,718								368	2,012	755	452	1,756	9,061	

Table 31. 2012-2013 Steelhead Sport Catch, by Area and Month (continued)

COLUMBIA RIVER AND TRIBUTARIES																	
System	Water	Race	Mark Type	2012									2013			Total	
				Apr	May	Jun	Jul	Aug	Sep	Oct	Nov	Dec	Jan	Feb	Mar		
Elochoman R. System	Elochoman River	W	Marked									75	289	80	42	34	520
Entiat R. System	Entiat River	S	Marked				3	2		9							14
Germany Cr. System	Germany Creek	S	Marked			2										2	
		W	Marked									1	1	3		5	
Grande Ronde R. System	Grande Ronde River	S	Marked	117						13	166	357	220	52	686	899	2,510
Grays R. System	Grays River	S	Marked				15					5					20
		W	Marked									4	4	39	20	6	73
	Grays River, West Fork	S	Marked							10	5						15
		W	Marked									12	86	12	4		114
	Grays R. System Totals	S	Marked				15			10	10						35
		W	Marked										16	90	51	24	6
Kalama R. System	Kalama River below Kalama Falls Hatchery	S	Marked			319	662	771	321	166	117						2,356
		W	Marked	142									33	67	111	72	75
Klickitat R. System	Klickitat River above Fishway 5	S	Marked			73	111	173	96	81	27						561
	Klickitat River below Fishway 5	S	Marked	38	77	176	169	384	219	111	23						1,197
	Klickitat R. System Totals	S	Marked	38	77	249	280	557	315	192	50						1,758
Lewis R. System	Cedar Creek (Clark Co.)	S	Marked			3	5										8
	Lewis River (below E. Fork)	S	Marked		14	38	27	123	27	8							237
		W	Marked	13									16	29	13		71
	Lewis River, E. Fork	S	Marked		32	56	16	13		19							136
W		Marked	8									23	59	59	15	3	167

Table 31. 2012-2013 Steelhead Sport Catch, by Area and Month (continued)

COLUMBIA RIVER AND TRIBUTARIES																	
System	Water	Race	Mark Type	2012								2013			Total		
				Apr	May	Jun	Jul	Aug	Sep	Oct	Nov	Dec	Jan	Feb		Mar	
Lewis R. System (cont.)	Lewis River, No. Fork	S	Marked		78	462	1,590	986	214	88					3,418		
		W	Marked	5						10	122	97	8	15	257		
	Lewis R. System Totals	S	Marked		124	559	1,638	1,122	241	115					3,799		
		W	Marked	26							49	210	169	23	18	495	
Little White Salmon R. Sys.	Little White Salmon River & Drano Lake	S	Marked	6	10	29	239	2,115	739	13				6	3,157		
Methow R. System	Methow River	S	Marked								765	219	3	3	383	1,373	
Mill Cr. System (Cowlitz)	Mill Creek (Cowlitz Co.)	W	Marked											1	3	4	
Okanogan R. System	Okanogan River	S	Marked							134	62	40	8	95	161	500	
	Similkameen River	S	Marked							4	25	25	2	25	183	264	
	Okanogan R. System Totals	S	Marked							138	87	65	10	120	344	764	
Salmon Cr. System (Clark)	Salmon Creek (Clark Co.)	S	Marked							2						2	
		W	Marked									8	6	1	1	16	
Snake R. Mainstem	Snake R 1: below Ice Harbor Dam	S	Marked							296	31	8	31	6		372	
	Snake R 2: Ice Harbor to Lower Monumental Dam	S	Marked							601	666	336	392	71	113	141	2,320
	Snake R 3: Lower Monumental to Little Goose Dam	S	Marked							693	733	538	411	310	206	149	3,040
	Snake R 4: Little Goose to Lower Granite Dam	S	Marked						3	321	248	200	146	298	149	144	1,509

Table 31. 2012-2013 Steelhead Sport Catch, by Area and Month (continued)

COLUMBIA RIVER AND TRIBUTARIES																			
System	Water	Race	Mark Type	2012									2013			Total			
				Apr	May	Jun	Jul	Aug	Sep	Oct	Nov	Dec	Jan	Feb	Mar				
Snake R. Mainstem (cont.)	Snake R 5: Lower Granite Dam to Interstate Bridge, Clarkston	S	Marked							445	561	507	138	141	59	34	1,885		
	Snake R 6: upstream of the Interstate Bridge, Clarkston	S	Marked							256	1,182	366	220	127	45	3	2,199		
	Snake R. Mainstem Totals	S	Marked					3	2,612	3,421	1,955	1,338	953	572	471	11,325			
Tucannon R. System	Tucannon River	S	Marked				10	14	278	460	134	86	53	14	10	1,059			
Walla Walla R. System	Touchet River	S	Marked										22	19	11	30	51	133	
		S	Unmarked											1				1	
	Walla Walla R. System Totals	S	Marked											22	20	11	30	51	134
		S	Unmarked												1				1
	Walla Walla River	S	Marked			3	11	22	124	194	59	39	11	34	34	531			
	Walla Walla R. System Totals	S	Marked			3	11	22	124	194	81	58	22	64	85	664			
		S	Unmarked			3	11	22	124	194	81	59	22	64	85	665			
Washougal R. System	Washougal Hatchery on Washougal River	S	Marked															3	
	Washougal River	S	Marked			69	229	44	6	6	25						379		
		W	Marked											47	171	98	47	26	389
	Washougal River, West Fork	S	Marked			16	34	25	3								78		
		W	Marked												4	4		8	
	Washougal R. System Totals	S	Marked			72	245	78	31	9	25						460		
W		Marked											47	171	102	51	26	397	

Table 31. 2012-2013 Steelhead Sport Catch, by Area and Month (continued)

COLUMBIA RIVER AND TRIBUTARIES																	
System	Water	Race	Mark Type	2012								2013			Total		
				Apr	May	Jun	Jul	Aug	Sep	Oct	Nov	Dec	Jan	Feb		Mar	
Wenatchee R. System	Icicle Creek	S	Marked											2	2		
	Wenatchee River	S	Marked							12	6	3		24	6	51	
	Wenatchee R. System Totals	S	Marked							12	6	3		26	6	53	
White Salmon R. System	Big White Salmon River	S	Marked				11	21	5	2						39	
		W	Marked									1	3		7	11	
Wind R. System	Wind River above Shipherd Falls	S	Marked			9									9		
	Wind River below Shipherd Falls	S	Marked	4	17	9	99	407	133						4	673	
	Wind R. System Totals	S	Marked	4	17	18	99	407	133						4	682	
Columbia River and Tributary System Totals (All non-Boldt)		S	Marked	382	1,974	7,535	16,565	12,828	7,488	8,694	4,829	2,533	1,429	1,787	2,833	68,877	
			Unmarked														3
		Total	382	1,974	7,535	16,565	12,830	7,488	8,694	4,829	2,534	1,429	1,787	2,833	68,880		
		W	Marked	4,274											598 3,001	1,514 682 2,036	12,105

Table 31. 2012-2013 Steelhead Sport Catch, by Area and Month (continued)

PUGET SOUND AND STRAIT OF JUAN DE FUCA RIVER SYSTEMS AND MARINE CATCH AREAS																	
System	Water	Race	Mark Type	2012									2013			Total	
				Apr	May	Jun	Jul	Aug	Sep	Oct	Nov	Dec	Jan	Feb	Mar		
Marine Water	Area 5: W Juan de Fuca	S	Marked				15		15							30	
	Area 6: E Juan de Fuca	W	Marked										4			4	
	Area 7: San Juan Islands	W	Marked											4		4	
	Area 8-1: Skagit Bay-Saratoga Psg.	S	Marked			3											3
		W	Marked												4		4
	Area 8-2: Port Susan-Port Gardner	W	Marked									4			4	8	
	Area 9: Admiralty Inlet	S	Marked		10	8	10		3	5							36
		W	Marked	17							9	17	4		4		51
	Area 10: N Puget Sound	W	Marked											4		4	
Marine Water Totals	S	Marked		10	11	25		18	5							69	
	W	Marked	17							9	21	8	12	8		75	
Clallam R. System	Clallam River	W	Marked								3		13		16		
Dungeness R. System	Dungeness River	W	Marked							13	48	32			93		
Green-Duwamish R. Sys	Green (Duwamish River) (King Co.)	S	Marked			191	171	87	83	56						588	
			Unmarked					2								2	
		Total			191	171	89	83	56							590	
	W	Marked								20	83	40			143		
Hoko R. System	Hoko River	W	Marked								14	96	58	24	5	197	
Lyre R. System	Lyre River	W	Marked								6	13	3		22		
Morse Cr. System	Morse Creek (Clallam Co.)	W	Marked									6	3		9		
Nisqually R. System	Nisqually River	W	Marked										6		6		

Table 31. 2012-2013 Steelhead Sport Catch, by Area and Month (continued)

PUGET SOUND AND STRAIT OF JUAN DE FUCA RIVER SYSTEMS AND MARINE CATCH AREAS																
System	Water	Race	Mark Type	2012								2013			Total	
				Apr	May	Jun	Jul	Aug	Sep	Oct	Nov	Dec	Jan	Feb		Mar
Nooksack R. System	Nooksack River, No. Fork	W	Marked										13	19	19	51
	Nooksack River, below North Fork	W	Marked										13	16	3	32
	Nooksack R. System Totals	W	Marked										26	35	22	83
Pysht R. System	Pysht River	W	Marked										3	19		22
Sekiu R. System	Sekiu River	W	Marked										3	3		6
Skagit R. System	Cascade River	S	Marked			1				1	14					16
		W	Marked								64	127	120	45	356	
	Skagit River	S	Marked			13	1		4	1						19
		W	Marked								14	45	42	9	110	
	Skagit R. System Totals	S	Marked			14	1		5	15						35
		W	Marked								78	172	162	54	466	
Snohomish R. System	Pilchuck River (Snohomish System)	W	Marked										18	9		27
	Raging River	S	Marked							3	12					15
	Skykomish River	S	Marked			1,245	1,225	432	168	252						3,322
		S	Unmarked			1										1
		Total				1,246	1,225	432	168	252						3,323
		W	Marked								386	948	480	106	1,920	
	Skykomish River, No. Fork	S	Marked			9	41	6	12	3						71
		W	Marked										18	24		42
	Skykomish River, So. Fork	S	Marked			9	6	3		6						24
		W	Marked										3	3		6
Snohomish River	S	Marked			301	134	9	12	26						482	
	W	Marked								39	110	36			185	

Table 31. 2012-2013 Steelhead Sport Catch, by Area and Month (continued)

PUGET SOUND AND STRAIT OF JUAN DE FUCA RIVER SYSTEMS AND MARINE CATCH AREAS																
System	Water	Race	Mark Type	2012								2013			Total	
				Apr	May	Jun	Jul	Aug	Sep	Oct	Nov	Dec	Jan	Feb		Mar
Snohomish R. System (cont.)	Snoqualmie River	S	Marked			15	9	6								30
		W	Marked								86	779	254	12	1,131	
	Sultan River	S	Marked					3								3
		W	Marked								3	6	9		18	
	Tokul Creek	W	Marked								194	221	91	506		
	Tolt River	W	Marked								6			6		
	Wallace River	S	Marked			3	6		6	17					32	
		W	Marked								32	50	32	6	120	
	Snohomish R. System Totals	S	Marked			1,582	1,421	459	201	316						3,979
Unmarked					1										1	
Total				1,583	1,421	459	201	316						3,980		
	W	Marked									546	2,132	1,068	215	3,961	
Stillaguamish R. System	Canyon Creek	S	Marked			4	9								13	
		W	Marked										12		12	
	Pilchuck Creek (Stillaguamish System)	S	Marked					4							4	
	Stillaguamish R. No. Fork	S	Marked			17	125	43	35	39					259	
		W	Marked								56	196	114	23	389	
	Stillaguamish R. So. Fork	S	Marked				4		4	9					17	
			Unmarked					2		9					2	
		Total				4	2	4	9						19	
	Stillaguamish River	W	Marked										3		3	
		S	Marked						17	26					43	
		W	Marked									3	20	3	26	
Stillaguamish R. System Totals	S	Marked			21	138	47	56	74					336		
		Unmarked					2							2		
	Total			21	138	49	56	74						338		
	W	Marked									59	216	132	23	430	

Table 31. 2012-2013 Steelhead Sport Catch, by Area and Month (continued)

PUGET SOUND AND STRAIT OF JUAN DE FUCA RIVER SYSTEMS AND MARINE CATCH AREAS																	
System	Water	Race	Mark Type	2012								2013			Total		
				Apr	May	Jun	Jul	Aug	Sep	Oct	Nov	Dec	Jan	Feb		Mar	
Puget Sound, Strait of Juan de Fuca River Systems and Marine Catch Area Totals (All are Boldt Case Areas)		S	Marked		10	1,819	1,756	593	363	466						5,007	
			Unmarked			1		4								5	
			Total		10	1,820	1,756	597	363	466							5,012
	W		Marked	17								751	2,819	1,579	350	13	5,529

Table 31. 2012-2013 Steelhead Sport Catch, by Area and Month (continued)

UNKNOWN																	
System	Water	Race	Mark Type	2012								2013			Total		
				Apr	May	Jun	Jul	Aug	Sep	Oct	Nov	Dec	Jan	Feb		Mar	
Total Unknown		S	Marked		16	57	131	74	131	131						540	
			Marked	40							110	151	129	89	66	585	
			Unmarked										4		7	4	15
	W		Total	40								110	155	129	96	70	600

Table 32. 2012-2013 Washington Sport Steelhead Fishing, by Residence

County of Residence	Number of Catch Record Cards	Population by County	% Catch Record Card Holders	Total Steelhead	Average Catch per Card
Adams	1,215	19,005	6.4	428	0.35
Asotin	2,030	21,888	9.3	1,346	0.66
Benton	16,150	182,398	8.9	6,205	0.38
Chelan	7,275	73,687	9.9	1,008	0.14
Clallam	10,717	71,863	14.9	2,246	0.21
Clark	38,651	438,287	8.8	10,073	0.26
Columbia	528	3,995	13.2	526	1.00
Cowlitz	19,166	101,996	18.8	11,018	0.57
Douglas	3,471	39,350	8.8	669	0.19
Ferry	322	7,705	4.2	72	0.22
Franklin	6,391	85,845	7.4	2,540	0.40
Garfield	331	2,228	14.9	89	0.27
Grant	4,553	91,723	5.0	615	0.14
Grays Harbor	11,553	71,692	16.1	5,037	0.44
Island	11,876	79,177	15.0	276	0.02
Jefferson	4,070	29,854	13.6	223	0.05
King	98,705	2,007,440	4.9	13,354	0.14
Kitsap	23,209	254,991	9.1	1,801	0.08
Kittitas	2,745	41,672	6.6	348	0.13
Klickitat	2,961	20,699	14.3	1,230	0.42
Lewis	10,310	75,621	13.6	5,064	0.49
Lincoln	707	10,437	6.8	223	0.32
Mason	6,880	60,832	11.3	1,105	0.16
Okanogan	3,599	41,275	8.7	1,399	0.39
Pacific	3,925	20,575	19.1	1,293	0.33
Pend Oreille	410	12,980	3.2	45	0.11
Pierce	63,151	811,681	7.8	8,709	0.14
San Juan	2,025	15,824	12.8		
Skagit	17,134	118,222	14.5	535	0.03
Skamania	1,310	11,187	11.7	678	0.52
Snohomish	63,568	733,036	8.7	6,071	0.10
Spokane	14,578	475,735	3.1	3,486	0.24
Stevens	1,416	43,538	3.3	419	0.30
Thurston	23,093	258,332	8.9	4,591	0.20
Wahkiakum	1,201	3,993	30.1	1,819	1.51
Walla Walla	4,434	59,404	7.5	3,272	0.74
Whatcom	18,126	205,262	8.8	696	0.04
Whitman	1,923	46,606	4.1	990	0.51
Yakima	15,157	246,977	6.1	4,056	0.27
Unknown WA	1,255			285	0.23
Washington Total	520,121	6,897,012	7.5	103,840	0.20
Other State Total	44,136			8,282	0.19
Canada	1,672			18	0.01
Other	447				
Grand Total	566,376			112,140	0.20

Source: Table 1: Annual Estimates of the Resident Population for Counties of Washington: April 1, 2010 to July 1, 2012.

Source: Population Division, U.S. Census Bureau. Release Date: December 2012.

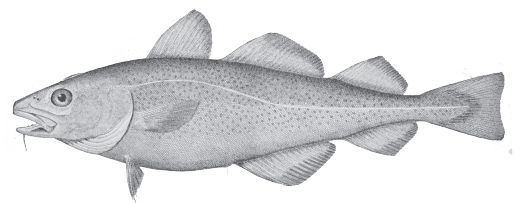
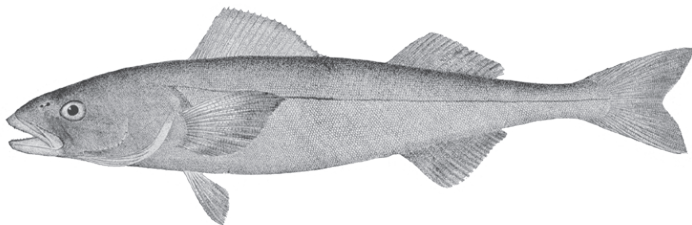
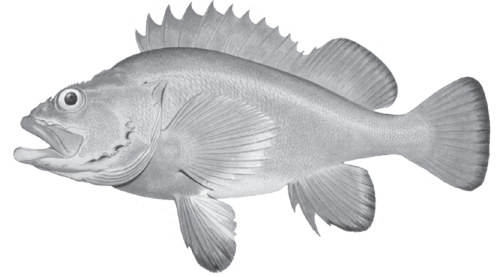
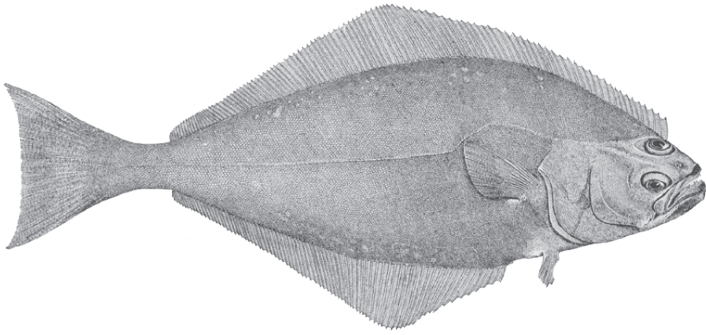
Table 33. 2012-2013 Frequency Distribution of Estimated Steelhead Catch Record Cards and Catch

#Steelhead per Catch Record Card	Number of Cards	Cumulative Number of Cards	Percent Cards	Cumulative Percent Cards	Total Catch	Cumulative Total Catch	Percent Catch	Cumulative Percent Catch
0	531,798	531,798	93.9%	93.9%	0	0	0.0%	0.0%
1	15,691	547,489	2.8%	96.7%	15,691	15,691	14.0%	14.0%
2	7,382	554,871	1.3%	98.0%	14,764	30,455	13.2%	27.2%
3	3,147	558,018	0.6%	98.5%	9,441	39,896	8.4%	35.6%
4	1,935	559,953	0.3%	98.9%	7,740	47,636	6.9%	42.5%
5	1,373	561,326	0.2%	99.1%	6,865	54,501	6.1%	48.6%
6	1,025	562,351	0.2%	99.3%	6,150	60,651	5.5%	54.1%
7	776	563,127	0.1%	99.4%	5,432	66,083	4.8%	58.9%
8	499	563,626	0.1%	99.5%	3,992	70,075	3.6%	62.5%
9	374	564,000	0.1%	99.6%	3,366	73,441	3.0%	65.5%
10	410	564,410	0.1%	99.7%	4,100	77,541	3.7%	69.1%
11	223	564,633	0.0%	99.7%	2,453	79,994	2.2%	71.3%
12	178	564,811	0.0%	99.7%	2,136	82,130	1.9%	73.2%
13	178	564,989	0.0%	99.8%	2,314	84,444	2.1%	75.3%
14	161	565,150	0.0%	99.8%	2,254	86,698	2.0%	77.3%
15	196	565,346	0.0%	99.8%	2,940	89,638	2.6%	79.9%
16	125	565,471	0.0%	99.8%	2,000	91,638	1.8%	81.7%
17	89	565,560	0.0%	99.9%	1,513	93,151	1.4%	83.1%
18	125	565,685	0.0%	99.9%	2,250	95,401	2.0%	85.1%
19	80	565,765	0.0%	99.9%	1,520	96,921	1.4%	86.4%
20	62	565,827	0.0%	99.9%	1,240	98,161	1.1%	87.5%
21	62	565,889	0.0%	99.9%	1,302	99,463	1.2%	88.7%
22	80	565,969	0.0%	99.9%	1,760	101,223	1.6%	90.3%
23	36	566,005	0.0%	99.9%	828	102,051	0.7%	91.0%
24	45	566,050	0.0%	99.9%	1,080	103,131	1.0%	92.0%
25	62	566,112	0.0%	100.0%	1,550	104,681	1.4%	93.3%
26	18	566,130	0.0%	100.0%	468	105,149	0.4%	93.8%
27	45	566,175	0.0%	100.0%	1,215	106,364	1.1%	94.8%
28	54	566,229	0.0%	100.0%	1,512	107,876	1.4%	96.2%
29	45	566,274	0.0%	100.0%	1,305	109,181	1.2%	97.4%
30	80	566,354	0.0%	100.0%	2,400	111,581	2.1%	99.5%
31	18	566,372	0.0%	100.0%	558	112,139	0.5%	100.0%
Total	566,372		100.0%		112,139		100.0%	

Table 34. 2012-2013 Sport Steelhead Inventory of Catch Record Cards Reported

Response Type	With Catch	No Catch	Total Reports	Number of Steelhead	Catch per Card
Prior to reminder	253	12,855	13,108	548	0.04
After 1st reminder postcard	3,079	37,546	40,625	10,273	0.25
After 2nd reminder postcard	281	4,641	4,922	811	0.16
After 3rd reminder postcard	107	4,207	4,314	333	0.08
From license dealer	161	1,738	1,899	614	0.32
Total	3,881	60,987	64,868	12,579	0.19

Marine Fish



This table was updated June 2016 as the previous information was incorrect. This information supersedes printed or downloaded copies prior to July 2016.

Table 35. 2012 Coastal Marine Fish Catch (Corrected)

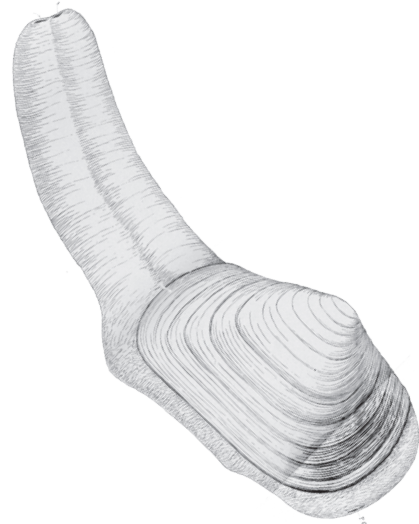
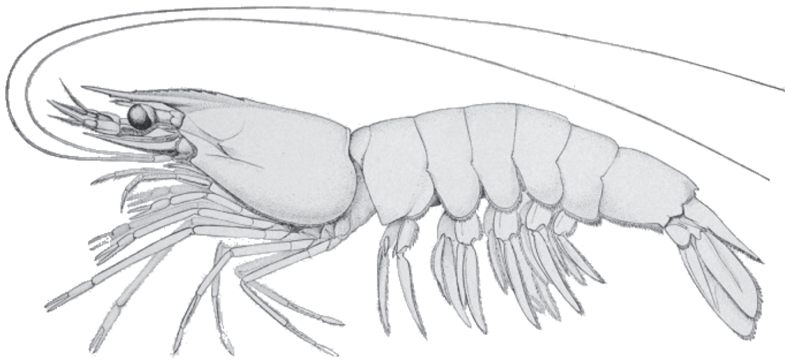
Species	Catch Area					Total
	Area 1 Ilwaco	Area 2 Westport	Area 3 La Push	Area 4 Neah Bay (Ocean)	Area 4B Neah Bay (Strait)	
Black Rockfish	9,531	157,438	31,484	23,976	16,105	238,534
Blue Rockfish	57	161	284	1,096	230	1,828
Yellowtail Rockfish	3,090	11,174	866	1,754	195	17,079
China Rockfish	25	53	536	1,913	326	2,853
Quillback Rockfish	16	914	145	553	136	1,764
Copper Rockfish	8	44	52	696	164	964
Canary Rockfish		4	21	67	30	122
Yelloweye Rockfish	3		2	36	5	46
Tiger Rockfish	15	9	20	66	5	115
Vermillion Rockfish	7	3	13	353	33	409
Boccaccio	8	2	249	257		516
Other Rockfish	14	77	2	4	5	102
Lingcod	1,203	22,122	7,504	5,403	3,177	39,409
Kelp Greenling	666	510	459	1,282	1,373	4,290
Pacific Cod	12	4	17	83	40	156
Cod (general)	9	5		10	3	27
Cabazon	232	374	471	1,293	448	2,818
Flatfish	12	1,270	22	107	574	1,985
Surf Perch	517	39		2	2	560
Albacore Tuna	24,920	22,838	2,637	71		50,466
Sharks and Skates	55	53	8	3	2	121
Miscellaneous	1,987	1,844	181	160	107	4,279

Table 36. Coastal Washington Recreational Pacific Halibut Catch - 2000-2012

Year	Columbia Catch Area 1	South Coast Catch Area 2	North Coast Catch Areas 3-4
2000	370	1,980	4,286
2001	387	2,085	5,752
2002	347	1,644	5,219
2003	327	2,482	5,576
2004	447	3,455	5,627
2005	518	2,981	5,046
2006	693	2,377	4,562
2007	585	2,017	3,136
2008	667	2,375	4,408
2009	391	2,328	4,841
2010	428	2,259	5,438
2011	480	2,613	4,931
2012	350	2,588	5,130

Table 37. 2012 Sport Bottomfish Catch by Boat-Based Anglers in Puget Sound

Species	Marine Area										Puget Sound Total	
	5	6	7	8-1	8-2	9	10	11	12	13		
Pacific Halibut	2,650	2,095	46			138						4,929
Starry Flounder		197	180	55	61	6	63	10			171	743
Soles	687	33	2,054	200	3,749	778	1,520	2,677	12		1,471	13,181
Sanddabs			36		8,359	5,350	13,992	5,969			2,531	36,237
Misc. Flatfish	72	30	1,047	121	14,067	8,352	2,773	6,538	12		15,200	48,212
Sablefish												0
Lingcod	752	174	1,481	316	170	2,343	609	49			223	6,117
Greenlings	3,088	702	16,926	1,354		32	8	43			13	22,166
Copper Rockfish	125	7	6		29	13		47	9			236
Quillback Rockfish	27	1				16		9				53
Brown Rockfish							4					4
Black Rockfish	7,487	7					16					7,510
Yellowtail Rockfish	8											8
Vermillion Rockfish	1											1
Canary Rockfish	33											33
China Rockfish	42											42
Other Rockfishes	9				14		31	32	60			146
Pacific Cod	899	3										902
Walleye Pollock	3											3
Pacific Hake												0
Cabezon	454	14	252	27	5	150	4	5				911
Other Sculpins	17		2,028	19	469	39	261	261			11	3,105
Perches					268		783					1,051
Wolf-Eel												0
Spiny Dogfish		8	9		428	35	296	288			142	1,206
Ratfish			2					25				27
Skates												0
Octopus							4	18				22
Total	16,354	3,271	24,067	2,092	27,619	17,252	20,364	15,971	93	19,762		146,845



Shellfish

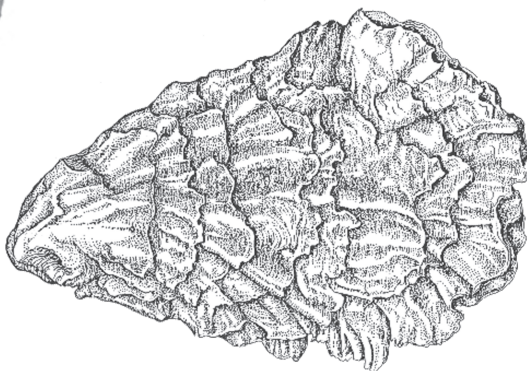
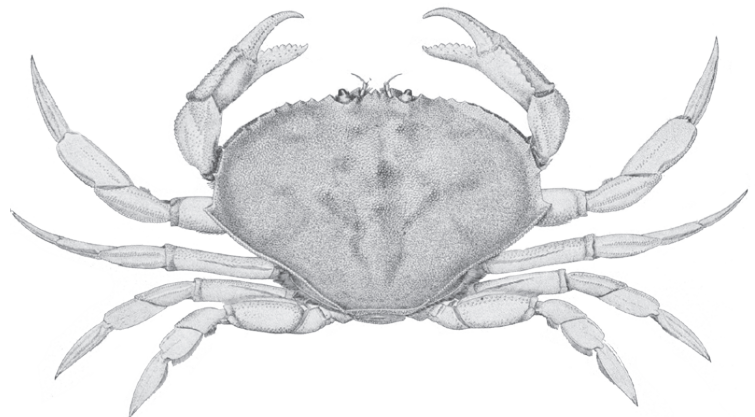


Table 38. 2012-2013 Seasonal Summary of Sport Razor Clam Digging on Ocean Beaches

Location	Fall 2012			Spring 2013		
	Digger Trips	Clams Per Trip	Number of Clams	Digger Trips	Clams Per Trip	Number of Clams
Long Beach	89,342	13.6	1,213,179	75,896	15.4	1,169,219
Twin Harbors	61,078	13.6	830,865	45,200	15.6	706,434
Copalis	57,763	14.0	809,179	37,937	15.4	584,507
Mocrocks	34,108	14.3	489,292	17,675	15.6	275,434
Kalaloch	0		0	0		0
Total	242,291	13.8	3,342,515	176,708	15.5	2,735,594

Table 39. 2012 Clam and Oyster Recreational Use and Harvest Estimates from Intertidal Areas East Of Dungeness Spit

Marine Areas	Beach Name	User Trips	Pounds of Clams Harvested								Number of Oysters
			Manila	Littleneck	Butter	Cockle	Softshell	Horse	Geoduck	Total	
6	Sequim Bay SP	1,451	150	2,614	379	618	54	246		4,061	14,305
7	Birch Bay SP	4,119	697	5,367	12,223	892	95	2,801	15	22,090	2,004
8-1	West Penn Cove	12,209	27	987	65,946	4,637	6	1,398		73,001	59,739
9	Fort Flagler SP	2,109		3,549	8,774	105	10	2,026		14,464	88
	Oak Bay CP	2,014	860	762	7,502	824	30	2,230		12,208	609
	P. T. Ship Canal East	1,792	92	771	10,066	474	1	1,921		13,325	
	S Indian Island CP	4,256	3,846	2,219	7,748	885	63	2,426	16	17,203	21
	Shine Tidelands SP	3,185	1,586	1,096	7,715	6,725	50	1,255	217	18,644	4,902
	Wolfe Prop SP	3,621	6,501	600	1,608	705	100	4,552		14,066	24,887
12	Dabob Broad Spit	677	1,262	27		72		127	520	2,008	3,249
	E Dabob	215	589	1						590	1,648
	Quilcene Tidelands	1,943	2,682	1						2,683	13,718
	Dosewallips SP App.	12,926	22,224	839	9	66	124		2,160	25,422	146,691
	Kitsap Memorial SP	281		121	504	429	4	427	20	1,505	3,286
	S Zelatched Point	97		12	50	18		141		221	1,460
	Toandos Peninsula SP	560		97	1,584	63		276		2,020	7,019
	Pt. Whitney Tidelands	1,744	1,743	52	72	20	1			1,888	21,031
	Pt. Whitney Lagoon	878	1,360			1				1,361	2,900
	Eagle Creek	1,505	490	299	26	614	13	199	45	1,686	20,900
	DNR-44A W Dewatto	1,980	934	208	187	51	1	29		1,410	30,130
	Rendsland Creek	483	131	76	934	10	1			1,152	6,312
	Scenic Beach SP	45		10	2	54				66	647
	Potlatch West SP-DNR	9,044	7,644	3,047	5,593	8,078	64	661		25,087	81,174
	Belfair SP	3,245	4,741	3	46	4	86	28		4,908	30,037
	Duckabush	3,147	5,990	380	562	721	19	448		8,120	23,373
Triton Cove Tidelands	1,592	1,760	188	242	120	1			2,311	15,942	
Lilliwaup SP	3,889	619	1,345	4,386	7,141	6	2,005		15,502	42,040	
Twanoh SP	6,226	8,687	40	66	2,274	23			11,090	67,152	
13	North Bay	20,888	56,259	2,370	159	92	181			59,061	70,287
	Penrose Pt SP	4,017	5,184	2,130	1,027	45	346	3,024	2,164	13,920	40,665
	Hope Island SP	516	49	87	3,151	2	7	445	1,122	4,863	545
	Oakland Bay Ogg	674	1,117	1	12					1,130	4,996
Total		111,328	137,224	29,299	140,573	35,740	1,286	26,665	6,279	377,066	741,757

Table 40. 2012 Hood Canal Sport Spot Shrimp Fishery

Area	Date	Number of Boats	Pounds	CPUE (lbs. per boat)
12	May (4 Days)	5,293	87,632	16.6
Total		5,293	87,632	16.6

Table 41. 2012 Puget Sound Sport Spot Shrimp Fishery

Area	Date	Number of Boats	Pounds	CPUE (lbs. per boat)
6	May - July	1,025	5,156	5.0
7	May (6 Days)	1036	11,455	11.1
8-1 & 8-2	May (2 Days)	725	12,974	17.9
9	May (2 Days)	383	6,991	18.3
10	May (2 Days)	383	7,022	18.3
11	May (2 Days)	124	1014	8.2
13	May	NA	NA	NA
Total		3,676	44,612	12.1

Table 42. 2012-2013 Sport Dungeness Crab Catch (all gear types)

Marine Area and location		Summer Season (lb. of crab)	Fall/Winter Season (lb. of crab)
4	Neah Bay	907	211
5	Sekiu/Pillar Point	3,956	690
6	Port Angeles Harbor, Dungeness & Sequim Bays, Discovery Bay	82,004	16,623
7	Gulf of Georgia, North of San Juan Islands, Bellingham Bay, Samish Bay, San Juan Islands, Anacortes	488,046	82,757
8-1	Skagit Bay, North Saratoga Passage, Holmes Harbor	310,212	7,968
8-2	South Saratoga Passage, Port Susan, Port Gardner	304,559	15,472
9 ¹	Admiralty Inlet, Port Townsend Bay, Useless Bay	113,105	13,859
10	Seattle/Kingston, Port Orchard	167,745	524
11	Colvos Pass, East Pass	89,159	103
12, 9 ²	Port Ludlow/Port Gamble, Upper Hood Canal, Central Hood Canal, Lower Hood Canal	256,808	34,607
13	South Puget Sound	50,648	14,251
Total		1,867,149	187,065

¹ Excluding all waters of Marine Area 9 south of a line from Foulweather Bluff to Olele Point.

² Including all waters of Marine Area 9 south of a line from Foulweather Bluff to Olele Point.



This program receives Federal financial assistance from the U.S. Fish and Wildlife Service Title VI of the Civil Rights Act of 1964, Section 504 of the Rehabilitation Act of 1973, Title II of the Americans with Disabilities Act of 1990, the Age Discrimination Act of 1975, and Title IX of the Education Amendments of 1972. The U.S. Department of the Interior and its bureaus prohibit discrimination on the bases of race, color, national origin, age, disability and sex (in educational programs). If you believe that you have been discriminated against in any program, activity or facility, please contact the WDFW ADA Program Manager at P.O. Box 43139, Olympia, Washington 98504, or write to

Department of the Interior
Chief, Public Civil Rights Division
1849 C Street NW
Washington D.C. 20240