

Marine Area Rules

1 • • • • Season and Daily Hours:

During an open season, marine waters are open 24 hours per day, except as noted for night closures.

2 • • • • Quota Management:

SALMON, HALIBUT, and some SHELLFISH are managed by quotas in many marine areas. These fisheries close when the quotas have been taken. Closures will be announced to local news media and will be included in the Fishing Hotline and Shellfish Rule Change Hotline messages.

NOTE: Emergency rules may occur throughout the year and will supersede the rules contained in this pamphlet. Changes can be found by calling the WDFW Fishing Hotline (360) 902-2500 or Shellfish Rule Change Hotline (866) 880-5431, contacting statewide customer service (360) 902-2700, or by visiting the WDFW website <http://wdfw.wa.gov>.

Rules listed below are General Rules. Specific Area Rules are listed by area.

Species Rules

Hatchery **STEELHEAD** may be caught and released until the daily limit is retained except for Areas 5-13. If a fish has swallowed the hook or is hooked in the gill, eye, or tongue, it should be kept if legal to do so. Wild **STEELHEAD** must be released.

SALMON - Single-point barbless hooks and a hand-held rod and line must be used in Areas 1-13. Minimum size for CHINOOK in Areas 1-4 is 24", in Areas 5-13, 22", except no minimum size in the Hoodspout Hatchery Zone. Minimum size for COHO in Areas 1-4 is 16"; except in Area 2-1 after July 31 and Area 2-2 east of the buoy 13 line after July 31, the minimum size is 12" for all SALMON. Other Marine Areas and species - no minimum size. Handling Rule: in Areas 5-13, it is illegal to bring a wild SALMON or a species of SALMON aboard a vessel if it is unlawful to retain those SALMON. "Aboard a vessel" is defined as inside the gunwale. Also see special Handling Rule for Area 2-2 east of the buoy 13 line.

WHITE STURGEON - Only one single-point barbless hook and bait is allowed when fishing for STURGEON. Catch-and-release open year-round. Green STURGEON may not be retained.

HALIBUT - Hook and line angling and spearfishing only. A hand-held line is permitted. Only one line with up to two hooks may be used. HALIBUT may be shot or harpooned while landing. May not be landed in a port closed to HALIBUT fishing except HALIBUT lawfully caught in Canada; angler must have Canadian license. See page 4, *Fish & Shellfish caught in Canada*.

BOTTOMFISH, TUNA, AND MACKEREL - Hook and line angling, spearfishing, and bow and arrow fishing only.

ROCKFISH - You may not land YELLOWEYE or CANARY rockfish into any port in Washington. Unlawful to fish for, retain, or possess rockfish in Areas 6-13.

UNCLASSIFIED MARINE FISH - CLOSED

OTHER FOOD FISH - These are species which occur in our waters irregularly, usually in coastal areas and include BARRACUDA, WHITE SEA BASS, BONITO, and POMFRET. Daily limit is 2 of each species.

SHARK CLOSURE - CLOSED to fishing for, retention, or possession of SIXGILL, SEVENGILL, and THRESHER SHARKS. SIXGILL SHARK may not be removed from the water.

Species Rules

FORAGE FISH - Forage fish jig or forage fish dip net only except ANCHOVY and SARDINE may be taken by a cast net in Areas 1-4. Only one net may be used at a time. Dip net gear must be held by the rigid handle at all times and may not be used from a vessel while under power. Cast net gear must be in immediate control at all times with retrieval cord in hand. Anglers with the reduced-fee license or a Designated Harvester Card may use a forage fish dip net with a hand-operated gate. Jig gear may have up to three treble hooks or nine single-point hooks, not to exceed $\frac{3}{8}$ " between point and shank. While fishing in Areas 5-11 & 13, a second line using forage fish jig gear may be used to fish for forage fish.

You may use forage fish jig gear in Columbia River waters from the Buoy 10 line to the Rocky Point/Tongue Point line.

Possession Limits

VESSEL LIMITS MARINE AREAS 1-6: Anglers aboard a boat may only possess one daily limit of fish or SHELLFISH in fresh form.

SALMON - Two daily limits of fresh SALMON. An additional 40 pounds of salmon may be possessed in a frozen or processed form (see pages 10-11).

TROUT - Two daily limits of hatchery STEELHEAD.

STURGEON - **Catch-and-release only.**

BOTTOMFISH - Two daily limits in any form.

HALIBUT - Two daily limits in any form, except only one limit while aboard the fishing vessel. For HALIBUT caught in Canadian waters, contact Department of Fisheries and Oceans Canada (DFO) or visit their website at http://www.pac.dfo-mpo.gc.ca/recfish/Opportunities/finfish_e.htm for updated Canadian regulations.

TUNA - ALBACORE, and MACKEREL - No possession limit or daily limit. YELLOWFIN, SKIPJACK, and NORTHERN BLUEFIN - No possession limit, daily limit 2 each.

SHELLFISH - One daily limit of fresh SHELLFISH. Additional SHELLFISH may be possessed in a frozen or processed form. See page 125 for Shellfish/Seaweed rules and page 126 for the shellfish safety information.

FORAGE FISH (HERRING, ANCHOVIES, SARDINES, SAND LANCE, and SMELT) - Two daily limits in fresh form. Additional FORAGE FISH may be possessed in frozen or processed form. **CLOSED to fishing for Columbia River SMELT (eulachon).** See description on next page.

Tackle/Gear Rules

ALL FISHING GEAR - Must be kept in immediate control, and gear may not be left unattended while fishing.

HOOK AND LINE ANGLING - Unless noted differently, only one line with up to 2 hooks is allowed.

Barbless hooks are required for all species in Marine Areas 5-13, except forage fish jig gear. When fishing for SALMON in Marine Areas 1-13, single-point barbless hooks must be used.

FORAGE FISH DIPNET - A section of netting (maximum mesh size is $\frac{5}{8}$ " stretched mesh) distended by a rigid frame not exceeding 36" across and directly attached to a rigid handle. May only be used for forage fish or squid.

FORAGE FISH CAST NET - A section of netting (maximum mesh size is 1" stretched mesh) no larger than 10' in diameter with retrieval cord. May only be used in Marine Areas 1-4. May only be used for ANCHOVY and SARDINE.

LANDING A FISH - A club or dipnet (landing net) may be used to assist landing a legal fish taken by legal gear. A gaff may only be used to land a legally hooked HALIBUT, TUNA, or DOGFISH SHARK that will be retained. HALIBUT may be shot or harpooned while landing.

DOWNRIGGERS - May be used with a line if the line releases from the downrigger while playing and landing the fish.

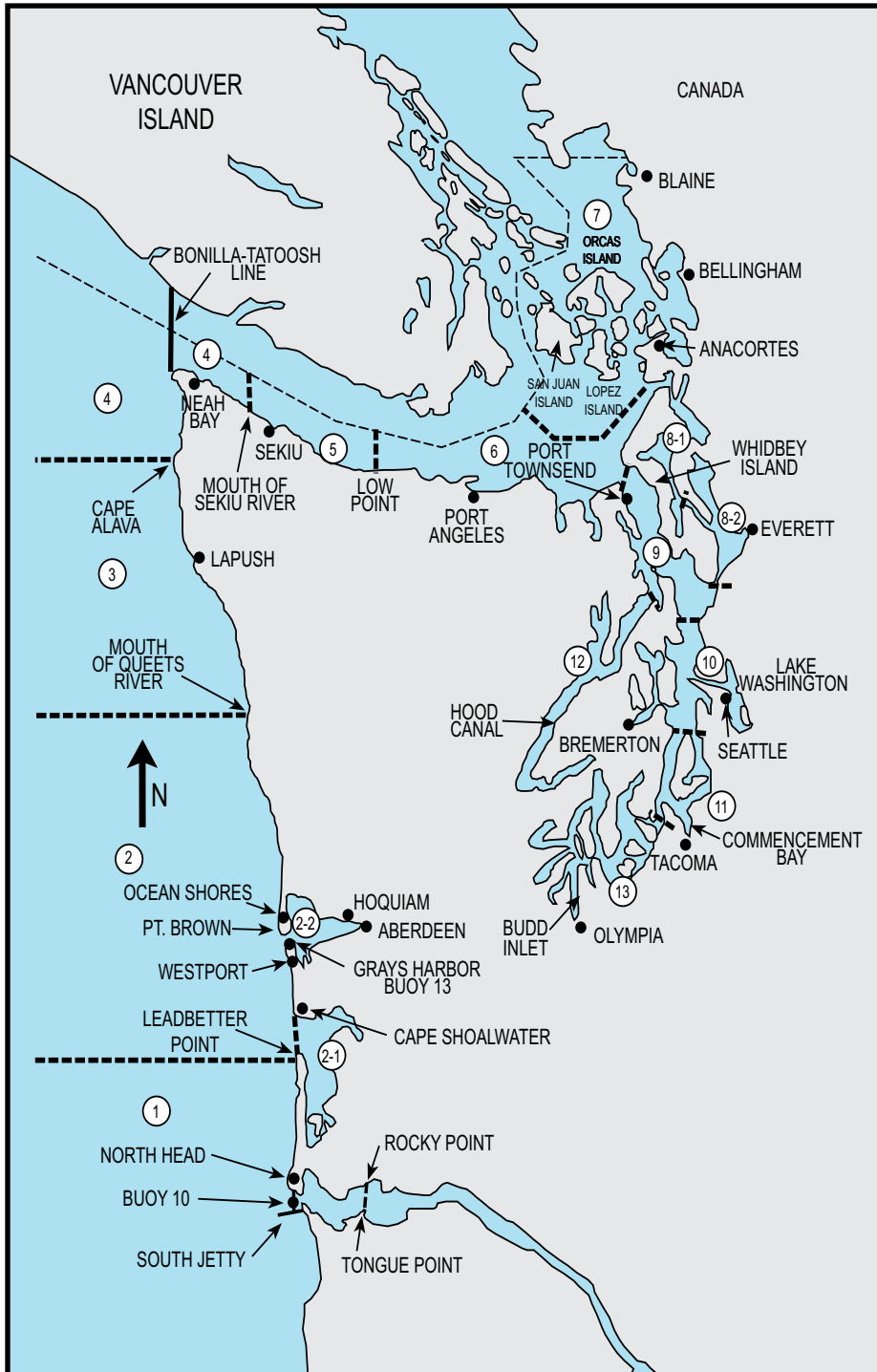
ROD HOLDERS - May be used; the rod must be easily removed without delay; rod may be left in the holder while playing the fish.

ELECTRIC REELS - May be used if designed for sport fishing and attached to a fishing rod.

SPEARFISHING - The diver must be swimming or floating in the water while spearfishing. The use of explosives or bullets attached to the spear ("bang sticks") is prohibited.

In Washington waters where a saltwater license is valid, each angler aboard a vessel may continue to deploy angling gear or shellfish gear until the daily limit of fish and shellfish for all anglers aboard has been achieved.

Marine Area Definitions and Codes



AREA DEFINITIONS AND CODES

1. **ILWACO** - west of the Buoy 10 line at the Columbia River mouth, north to Leadbetter Point.
2. **WESTPORT-OCEAN SHORES**- from Leadbetter Point north to the Queets River, excluding Willapa Bay and Grays Harbor.
- 2-1. **WILLAPA BAY** - east of a line from Leadbetter Point to Cape Shoalwater (see definition page 102).
- 2-2. **GRAYS HARBOR** - east of a line from the outermost tip of the north jetty to outermost exposed end of the south jetty.
3. **LAPUSH** - from the Queets River (47°32.31'N) north to Cape Alava (48° 10' N).
4. **NEAH BAY** - from Cape Alava north and inside Juan de Fuca Strait to the Sekiu River.
5. **SEKIU AND PILLAR POINT** - from mouth of the Sekiu River east to Low Point, mouth of the Lyre River.
6. **EAST JUAN DE FUCA STRAIT** - from Low Point east to the Partridge Point - Point Wilson line, north to the line from Trial Island (near Victoria B.C.) - Vessel Traffic Separation Buoy "R" - Smith Island to the Lawson Reef Buoy, to Northwest Island, to the Initiative 77 marker on Fidalgo Island.
7. **SAN JUAN ISLANDS** - all marine waters north of the Trial Island line (described under Area 6) to the United States-Canada boundary.
- 8-1. **DECEPTION PASS, HOPE ISLAND, AND SKAGIT BAY** - from West Point to Reservation Head eastward through Deception Pass, including all waters of Swinomish Slough and Skagit Bay, and the portion of Saratoga Passage north and west of a line from East Point Light to light on Camano Island (Saratoga Pass Light #4FI Red 4 Sec.).
- 8-2. **PORTS SUSAN AND GARDNER** - east of East Point Light-Camano Island Light line (described in 8-1 above) and north of the Possession Point-Shipwreck line (described in 9 below).
9. **ADMIRALTY INLET** - all waters inside and south of the Partridge Point - Point Wilson line, south and west of a line from Possession Point 110° true to shipwreck, north of the Hood Canal Bridge, and north of the Apple Cove Point-Edwards Point line.
10. **SEATTLE-BREMERTON AREA** - south from the Apple Cove Point-Edwards Point line to a line projected true east- west through the north tip of Vashon Island.
11. **TACOMA-VASHON ISLAND** - south from a line projected true east west through the north tip of Vashon Island to the northernmost Tacoma Narrows Bridge.
12. **HOOD CANAL** - all waters south of the Hood Canal Bridge.
13. **SOUTH PUGET SOUND** - all waters south of northernmost Tacoma Narrows Bridge.

Columbia River Smelt (eulachon)



Size: up to 12"

Color: bluish on upper half with silvery white sides and belly.

Look for: grooves on gill cover, skinny head, speckled tail.

Surf Smelt



Size: up to 10"

Color: silver with a stripe along the side.

Look for: small adipose fin and stripe on the side.

Marine Area 1 - Ilwaco

(West of the Buoy 10 line at the Columbia River mouth, north to Leadbetter Point)

SALMON

SPECIES	SEASON	ADDITIONAL RULES
SALMON - ENTIRE AREA	Open through Aug. 31, 2016	CHINOOK - min. size 24". COHO - min. size 16". Other SALMON species - no min. size. Daily limit 2 (combined). Only 1 CHINOOK may be retained. Release wild COHO. Season may close earlier if quota of 18,900 hatchery COHO or 10,200 CHINOOK guideline is attained. See Control Zone 1 closure below. Note: season may change depending on in season catch projections. See wdfw.wa.gov.
	May-June, 2017	Check the WDFW website at wdfw.wa.gov or call (360) 902-2700 in late April 2017 for information on the 2017 SALMON season.
TROUT	Year-round	Catch-and-release except up to 2 hatchery STEELHEAD may be retained.
STURGEON	Year-round	Catch-and-release.
TUNA and MACKEREL	Year-round	No min. size. No daily limit except NORTHERN BLUEFIN, SKIPJACK, and YELLOWFIN TUNA daily limit of 2 each.
HERRING, SAND LANCE, and SMELT	Year-round	No min. size. Daily limit 10 lbs., all species combined. All SMELT caught must be kept and count toward the daily limit except CLOSED to Columbia River SMELT (eulachon).
ANCHOVY and SARDINE	Year-round	No min. size. Daily limit 25 lbs., all species combined. May be taken by a cast net.
PACIFIC HALIBUT	Check the WDFW website at wdfw.wa.gov/fishing/creel/halibut or call (360) 902-2700 in April 2017 for information on PACIFIC HALIBUT seasons and regulations. No min. size. Daily limit 1. See the Nearshore HALIBUT Fishery below.	

BOTTOMFISH

BOTTOMFISH		ADDITIONAL RULES
Check the WDFW website at wdfw.wa.gov or call (360) 902-2700 in January 2017 for potential updates. Year-round season. Daily limit is 12 BOTTOMFISH (see definition page 10) regardless of species, subject to individual limits and seasons shown below. No BOTTOMFISH (except SABLEFISH, PACIFIC COD, and all flatfish species) may be landed in Marine Area 1 if a HALIBUT is onboard from May 1-Sept. 30 except during the Nearshore HALIBUT Fishery (see below).		
LINGCOD	Open through Oct. 15, 2016	Min. size 22". Daily limit 2. No retention or possession seaward of a line drawn from 46°38.17' N Lat., 124°21.00' W Lon., to 46°28.00' N Lat., 124°21.00' W Lon.
Check the WDFW website at wdfw.wa.gov or call (360) 902-2700 in January 2017 for information on the 2017 LINGCOD season.		
SURFPERCH	Year-round	No min. size. Daily limit 12. Except SHINER PERCH daily limit 15: not included in BOTTOMFISH limit.
ROCKFISH	Year-round	No min. size. Daily limit 10. No CANARY or YELLOWEYE may be retained.
CABEZON	Year-round	No min. size. Daily limit 2.
SIXGILL, SEVENGILL, and THRESHER SHARKS	CLOSED	CLOSED to fishing for, retaining, or possessing. SIXGILL SHARK may not be removed from the water.
OTHER FOOD FISH	Year-round	No min. size. Daily limit 2 of each species. See definition page 11.
ALL OTHER FISH	CLOSED	CLOSED to fishing for, retaining, or possessing.

Control Zone 1: An area at the Columbia River mouth bounded on the west by a line running northeast/southwest between the red lighted Buoy #4 (46°13.58'N/124°06.83'W) and the green lighted Buoy #7 (46°15.15'N/124°06.27'W); on the east by the Buoy #10 line which bears north/south at 357° true from the south jetty at 46°14'N/124°03.12'W to its intersection with the north jetty; on the north by a line running northeast/southwest between the green lighted Buoy #7 to the tip of the north jetty (46°14.8'N/124°05.33'W), and then along the north jetty to the point of intersection with the Buoy #10 line; and on the south by a line running northeast/southwest between the red lighted Buoy #4 and the tip of the south jetty (46°14.05'N/124°04.08'W), and then along the south jetty to the point of intersection with the Buoy #10 line, is **CLOSED** to fishing for SALMON at all times except open to fishing from the north jetty when adjacent waters north of the Control Zone are open to fishing for SALMON or the Buoy 10 fishery is open.

Buoy 10 season: See Columbia River listing in Eastside Rivers-Special Rules section.

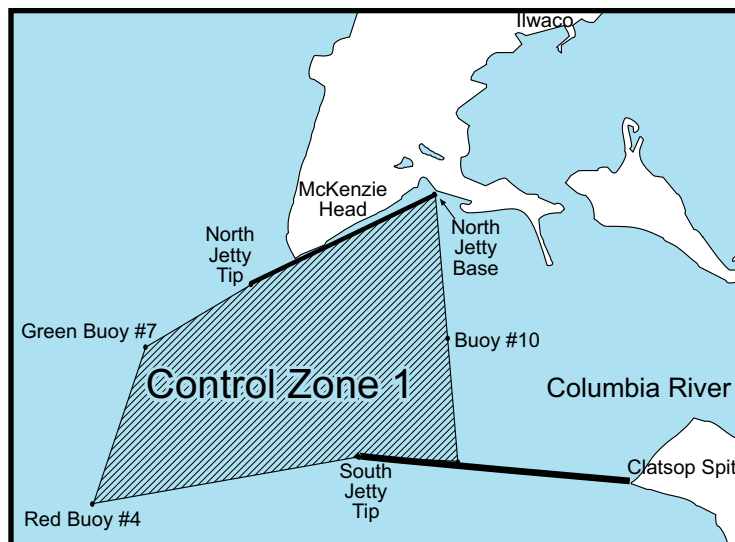
Buoy 10 Line: Defined as a true north and south line projected through Buoy 10, which marks the channel leading into the Columbia River at its mouth (a line from the Lewis and Clark Interpretive Center atop Cape Disappointment Rock through Buoy 10 to the south jetty).

Columbia River North Jetty: fishing for SALMON and STEELHEAD is open 7 days a week when Marine Area 1 or Buoy 10 areas are open for SALMON. The daily limit and minimum size restrictions follow the most liberal regulations of either of these areas. Single-point barbless hooks required for SALMON and STEELHEAD. A saltwater or combination license is required to fish the north jetty.

Reciprocity Rules: When angling from a boat in the concurrent waters of the Columbia River or the Pacific Ocean within 3 miles of shore between Cape Falcon, Oregon, and Leadbetter Point, Washington, either a Washington or an Oregon fishing license is valid.

Nearshore HALIBUT Fishery: BOTTOMFISH may be retained with HALIBUT on board in the Nearshore HALIBUT Fishery ONLY. The nearshore area is defined as waters shoreward of 46°38.17'N. latitude 124°15.88'W. Lon., to the WA/OR border at 46°16.00'N Lat., 124°15.88'W Lon., then connecting to the 40 fathom depth contour in Oregon.

Check the WDFW website at: wdfw.wa.gov/fishing/creel/halibut or call (360) 902-2700 for information on PACIFIC HALIBUT seasons and regulations.



Marine Area 2 - Westport - Ocean Shores

Marine Area 2-1 (Willapa Bay) and Marine Area 2-2 (Grays Harbor)

Marine Area 2 Definition: from Leadbetter Point north to the Queets River, excluding Willapa Bay and Grays Harbor

Marine Area 2-1 (Willapa Bay) Definition: east of a line from Leadbetter Point (46°39.20' N, 124° 3.516' W) due west to 46°39.20' N, 124° 5.3' W then due north to the westerly most landfall on Cape Shoalwater (46°44.66' N, 124° 5.3' W)

Marine Area 2-2 (Grays Harbor) Definition: east of a line from the tip of the north jetty to exposed end of the south jetty

NOTE: In Areas 2-1 and 2-2, anglers may use either a freshwater, saltwater, or combination license.

SPECIES	SEASON	ADDITIONAL RULES	
SALMON - AREA 2	Open through Aug. 21, 2016	CHINOOK - min. size 24". Other SALMON species - no min. size. Daily limit 1. Release COHO. Season may close earlier if 16,600 CHINOOK guideline is attained. Grays Harbor Control Zone CLOSED beginning Aug. 8, see description on next page. Note: season may change depending on in season catch projections. See wdfw.wa.gov .	
	May-June, 2017	Check the WDFW website at wdfw.wa.gov or call (360) 902-2700 in late April 2017 for information on the 2017 SALMON season.	
	AREA 2-1 east of a line from Cape Shoalwater to Leadbetter Pt. ④ (see map next page)	July 1-July 31	Open concurrent with the ocean (Area 2) for SALMON. Area 2 rules apply.
		Aug. 1-Jan. 31	Min. size 12". Daily limit 6 (combined). Up to 4 adults may be retained. Release wild CHINOOK. Aug. 1-Sept. 30: see ③ North River Area Closure on next page. Anglers may fish with two poles with Two-Pole Endorsement.
	AREA 2-2 (west of Buoy 13 line)	Open through Aug. 7, 2016	Open concurrent with the ocean (Area 2) for SALMON. Area 2 rules apply.
	AREA 2-2 (east of the Buoy 13 line)	ALL SALMON required to be released may not be totally removed from the water, except anglers fishing from boats 30' or longer as listed on either their state or Coast Guard registration are exempt.	
Humptulips North Bay Fishery ① (see map next page)	Aug. 1-Sept. 24	Min. size 12". Daily limit 2 (combined). Release wild COHO.	
East Grays Harbor Fishery ② (see map next page)	Oct. 1-Nov. 30	Min. size 12". Daily limit 1. Release wild CHINOOK.	
Westport Boat Basin and Ocean Shores Boat Basin	Aug. 16-Jan. 31	Min. size 12". Daily limit 6. No more than 4 adults may be retained. Release CHINOOK. Night closure and anti-snagging rule. Only single-point barbless hooks may be used.	
TROUT	Year-round	Catch-and-release except up to 2 hatchery STEELHEAD may be retained.	
STURGEON	Year-round	Catch-and-release.	
TUNA and MACKEREL	Year-round	No min. size. No daily limit except NORTHERN BLUEFIN, SKIPJACK, and YELLOWFIN TUNA daily limit of 2 each.	
HERRING, SAND LANCE, and SMELT	Year-round	No min. size. Daily limit 10 lbs., all species combined. All SMELT caught must be kept and count toward the daily limit except CLOSED to Columbia River SMELT (eulachon).	
ANCHOVY and SARDINE	Year-round	No min. size. Daily limit 25 lbs., all species combined. May be taken by a cast net.	
PACIFIC HALIBUT	Check the WDFW website at wdfw.wa.gov/fishing/creel/halibut or call (360) 902-2700 in April 2017 for information on PACIFIC HALIBUT seasons and regulations. No min. size. Daily limit 1. See HALIBUT and BOTTOMFISH Closures and Northern Nearshore HALIBUT Fishery on next page.		
BOTTOMFISH	Check the WDFW website at wdfw.wa.gov or call (360) 902-2700 in January 2017 for potential updates. Year-round season. Daily limit is a total of 12 BOTTOMFISH (see definition page 10) regardless of species, subject to individual limits and seasons shown below. See HALIBUT and BOTTOMFISH closure areas and 30 fathom restriction on next page.		
LINGCOD	Open through Oct. 15, 2016	Min. size 22". Daily limit 2. No retention or possession seaward of a line approximating 30 fathoms March 15-June 15 (except when the primary HALIBUT season is open). See 30 fathom restriction on next page. No retention or possession seaward of a line drawn from, 47°31.70' N, 124°45.00' W to 46°38.17' N, 124°30.00' W (except when the primary HALIBUT season is open) year-round.	
	Check the WDFW website at wdfw.wa.gov or call (360) 902-2700 in January 2017 for information on the 2017 LINGCOD season.		
SURFPERCH	Year-round	No min. size. Daily limit 12. Except SHINER PERCH daily limit 15: not included in BOTTOMFISH limit.	
ROCKFISH	Year-round	No min. size. Daily limit 10. No CANARY or YELLOWEYE may be retained.	
CABEZÓN	Year-round	No min. size. Daily limit 2.	
SIXGILL, SEVENGILL, and THRESHER SHARKS	CLOSED	CLOSED to fishing for, retaining, or possessing. SIXGILL SHARK may not be removed from the water.	
OTHER FOOD FISH	Year-round	No min. size. Daily limit 2 of each species. See definition page 11.	
ALL OTHER FISH	CLOSED	CLOSED to fishing for, retaining, or possessing.	

SALMON

BOTTOMFISH

Marine Areas

Marine Area 2 - Westport - Ocean Shores

HALIBUT and BOTTOMFISH Closure Areas

Fishing for HALIBUT and BOTTOMFISH is closed and anglers may not fish for SALMON with BOTTOMFISH aboard in these areas:

South Coast YRCA described beginning at: 46°58.00'N, 124°48.00'W, and continuing to 46°55.00'N, 124°48.00'W, then to 46°55.00'N, 124°49.00'W, then to 46°58.00'N, 124°49.00'W, and back to the point of origin.

Westport Offshore YRCA beginning at: 46°54.30'N, 124°53.40'W, and continuing to 46°54.30'N, 124°51.00'W, then to 46°53.30'N, 124°51.00'W, then to 46°53.30'N, 124°53.40'W, and back to the point of origin.

30 fathom restriction

Mar. 15-June 15: fishing for or possession of BOTTOMFISH, except ROCKFISH, is prohibited seaward of a line approximating 30 fathoms, except LINGCOD retention permitted on days primary HALIBUT season is open. SABLEFISH, and PACIFIC COD permitted May 1-June 15 from Queets River south to Leadbetter Pt., as described by the following coordinates: 47°31.70'N, 124°37.03'W, 47°25.67'N, 124°34.79'W, 47°12.82'N, 124°29.12'W, 46°52.94'N, 124°22.58'W, 46°44.18'N, 124°18.00'W, 46°38.17'N, 124°15.88'W.

Buoy 13 Line: A line drawn true north-south through Buoy 13 near the entrance of Grays Harbor.

Grays Harbor Control Zone: An area at the entrance to Grays Harbor bounded by a line from the lighthouse 1 mile south of the south jetty to buoy #2 to buoy #3 to the tip of the north jetty to the tip of the exposed end of the south jetty.

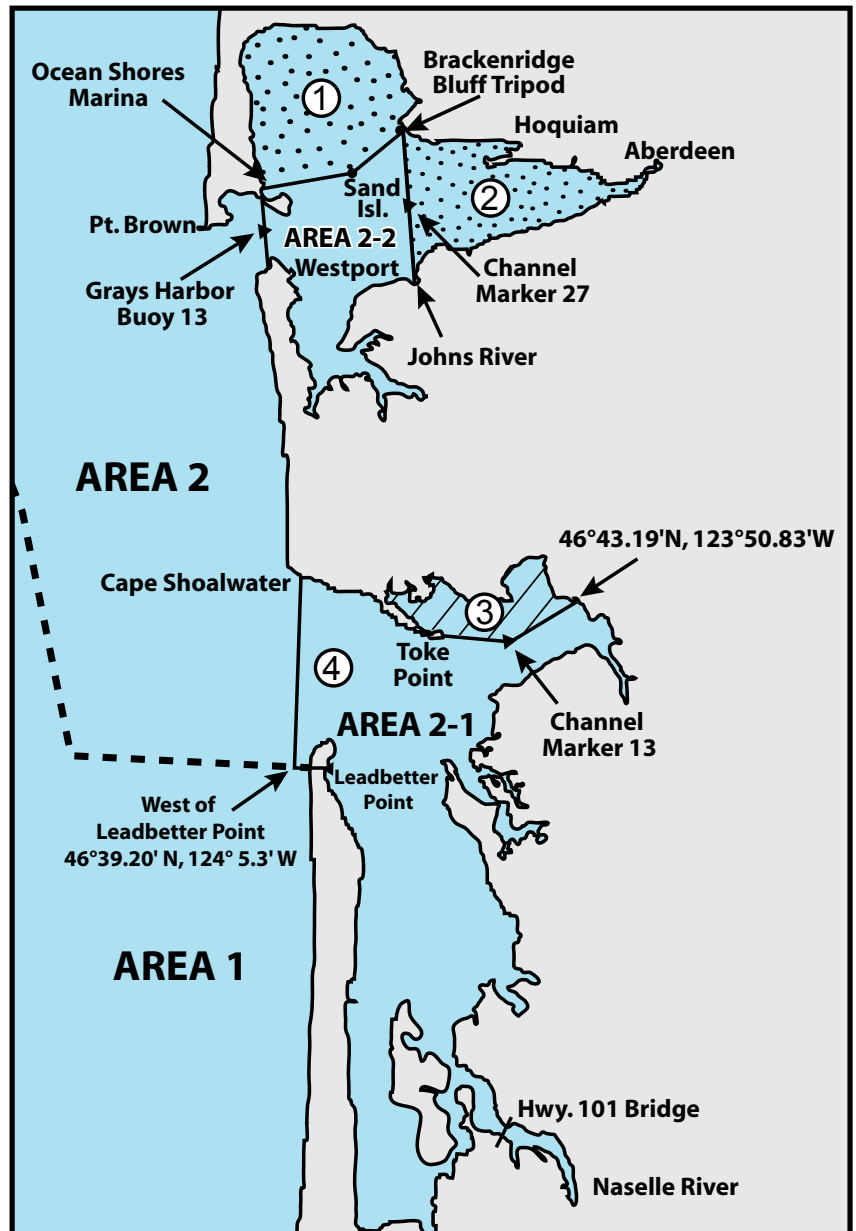
Westport Boat Basin: A portion of Grays Harbor lying inside the boat basin breakwater and inside lines drawn from lighted day markers 10 to 11 and 1 to 2.

Northern Nearshore HALIBUT Fishery: This area includes the waters from 47°31.70' N. latitude south to 46°58.00'N. latitude and east of a line approximating 30 fathoms as defined by the following coordinates: 47°31.70'N, 124°37.03'W, 47°25.67'N, 124°34.79'W, 47°12.82'N, 124°29.12'W, 46°58.00'N, 124°24.24'W.

Check the WDFW website at:

wdfw.wa.gov/fishing/creel/halibut or call (360) 902-2700 for information on PACIFIC HALIBUT seasons and regulations

NOTE: In Areas 2-1 and 2-2, anglers may use either a freshwater, saltwater, or combination license.



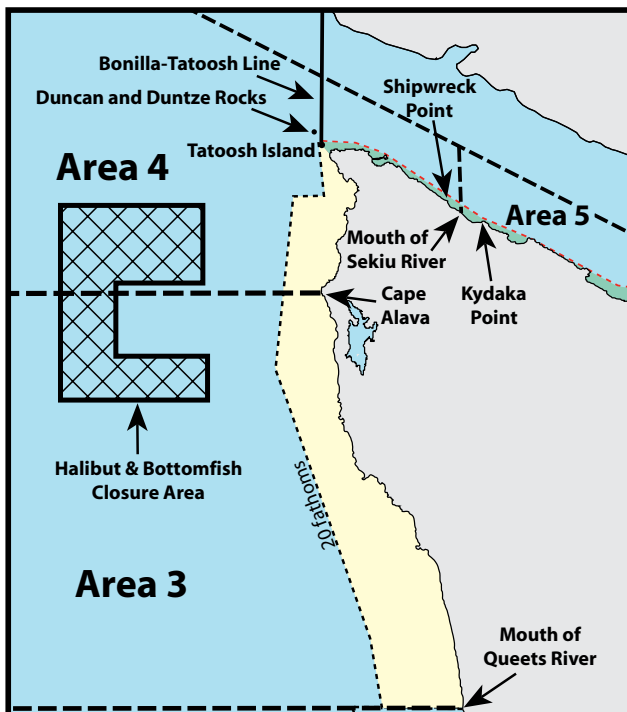
- ① **Humptulips North Bay Fishery**
Northerly of a line running from the south end of the eastern jetty at Ocean Shores Marina, then to a fishing boundary marker on Sand Island (46°57.52'N, 124°03.36'W) then to the Tripod Station located at 46°59.12'N, 124°00.72'W on Brackenridge Bluff.
- ② **East Grays Harbor Fishery**
Easterly of a projected line from the mouth of Johns River (Hwy. 105 Bridge) to the Tripod Station on Brackenridge Bluff (46°59.12'N, 124°00.72'W) through channel marker 27 (green).
- ③ **North River Closure**
Aug. 1-Sept. 30: closed to salmon angling in waters north of a line from Toke Point channel marker 3 easterly through Willapa Harbor channel marker 13 (green) northeasterly to the power transmission pole located at 46°43.19'N, 123°50.83'W.
- ④ **Marine Area 2-1 (Willapa Bay) Definition:** waters east of a line from Leadbetter Point (46°39.20' N, 124° 3.516' W) due west to 46°39.20' N, 124° 5.3' W then due north to the westerly most landfall on Cape Shoalwater (46°44.66' N, 124° 5.3' W).

Marine Area 3 - LaPush

(From the Queets River north to Cape Alava)

SPECIES	SEASON	ADDITIONAL RULES
SALMON - ENTIRE AREA	Open through Aug. 21, 2016	CHINOOK - min. size 24". Other SALMON species - no min. size. Daily limit 2 (combined). Release COHO. Season may close earlier if 2,000 CHINOOK guideline is attained. Note: season may change depending on inseason catch projections. See wdfw.wa.gov .
	May-June, 2017	Check the WDFW website at wdfw.wa.gov or call (360) 902-2700 in late April 2017 for information on the 2017 SALMON season.
TROUT	Year-round	Catch-and-release except up to 2 hatchery STEELHEAD may be retained.
STURGEON	Year-round	Catch-and-release.
TUNA and MACKEREL	Year-round	No min. size. No daily limit except NORTHERN BLUEFIN, SKIPJACK, and YELLOWFIN TUNA daily limit of 2 each.
HERRING, SAND LANCE, and SMELT	Year-round	No min. size. Daily limit 10 lbs., all species combined. All SMELT caught must be kept and count toward the daily limit except CLOSED to Columbia River SMELT (eulachon).
ANCHOVY and SARDINE	Year-round	No min. size. Daily limit 25 lbs., all species combined. May be taken by a cast net.
PACIFIC HALIBUT	Check the WDFW website at wdfw.wa.gov/fishing/creel/halibut or call (360) 902-2700 in April 2017 for information on PACIFIC HALIBUT seasons and regulations. No min. size. Daily limit 1. See HALIBUT and BOTTOMFISH Closure below.	
BOTTOMFISH	Check the WDFW website at wdfw.wa.gov or call (360) 902-2700 in January 2017 for potential updates. Year-round season. Daily limit is a total of 12 BOTTOMFISH (see definition page 10) regardless of species, subject to individual limits and seasons shown below. No retention or possession of BOTTOMFISH seaward of line approximating 20 fathoms from May 9 through Labor Day (except LINGCOD, SABLEFISH, and PACIFIC COD when HALIBUT is open). See 20 fathom restriction below. Note HALIBUT and BOTTOMFISH Closure Area below.	
LINGCOD	Open through Oct. 15, 2016	Min. size 22". Daily limit 2.
Check the WDFW website at wdfw.wa.gov or call (360) 902-2700 in January 2017 for information on the 2017 LINGCOD season.		
SURFPERCH	Year-round	No min. size. Daily limit 12. Except SHINER PERCH daily limit 15: not included in BOTTOMFISH limit.
ROCKFISH	Year-round	No min. size. Daily limit 10. No CANARY or YELLOWEYE may be retained.
CABEZON	Year-round	No min. size. Daily limit 2.
SIXGILL, SEVENGILL, and THRESHER SHARKS	CLOSED	CLOSED to fishing for, retaining, or possessing. SIXGILL SHARK may not be removed from the water.
OTHER FOOD FISH	Year-round	No min. size. Daily limit 2 of each species. See definition page 11.
ALL OTHER FISH	CLOSED	CLOSED to fishing for, retaining, or possessing.

BOTTOMFISH



HALIBUT and BOTTOMFISH Closure Area ("C"-shaped YRCA)

Fishing for HALIBUT and BOTTOMFISH is closed, and anglers may not fish for SALMON with BOTTOMFISH aboard in the area described as an eastward facing "C" beginning at: 48°18'N, 125°18'W and continuing to 48°18'N, 124°59'W, then to 48°11'N, 124°59'W, then to 48°11'N, 125°11'W, then to 48°04'N, 125°11'W, then to 48°04'N, 124°59'W, then to 48°00'N, 124°59'W, then to 48°00'N, 125°18'W, and back to the point of origin.

20 fathom restriction (BOTTOMFISH)

May 9 through Labor Day: fishing for or possession of BOTTOMFISH is prohibited seaward of a line approximating 20 fathoms from the Bonilla-Tatoosh line south to the Queets River, (Marine Area 3 and 4) as described by the following coordinates:
 48°23.90' N, 124°44.20' W,
 48°23.60' N, 124°44.90' W,
 48°18.60' N, 124°43.60' W,
 48°18.60' N, 124°48.20' W,
 48°10.00' N, 124°48.80' W,
 48°02.40' N, 124°49.30' W,
 47°37.60' N, 124°34.30' W,
 47°31.70' N, 124°32.40' W.

Exception: retention of LINGCOD, PACIFIC COD, and SABLEFISH allowed on days when HALIBUT is open.

Note: Duncan and Duntze Rocks are seaward of the 20 fathom line.

Marine Areas

Marine Area 4 - Neah Bay

(From Cape Alava north and inside Juan de Fuca Strait to the Sekiu River)

SALMON

SPECIES	SEASON	ADDITIONAL RULES
SALMON West of the Bonilla-Tatoosh Line	Open through Aug. 21, 2016	CHINOOK - min. size 24". Other SALMON species - no min. size. Daily limit 2 (combined). Release COHO. Beginning Aug. 1 release CHUM. Season may close earlier if 6,200 CHINOOK guideline is attained. Note: season may change depending on inseason catch projections. See wdfw.wa.gov .
	May-June, 2017	Check the WDFW website at wdfw.wa.gov or call (360) 902-2700 in late April 2017 for information on the 2017 SALMON season.
East of the Bonilla-Tatoosh Line	Open through July 31, 2016	CHINOOK - min. size 24". Other SALMON species - no min. size. Daily limit 2 (combined). Release COHO. East of a true north-south line through Sail Rock CLOSED to SALMON fishing. See Kydaka Point Closure below. Note: season may change depending on inseason catch projections. See wdfw.wa.gov .
	May-June, 2017	Check the WDFW website at wdfw.wa.gov or call (360) 902-2700 in late April 2017 for information on the 2017 SALMON season.
July-Aug. seasons may close earlier if 6,200 CHINOOK guideline is attained.		
TROUT	Year-round	Catch-and-release except up to 2 hatchery STEELHEAD may be retained.
STURGEON	Year-round	Catch-and-release.
TUNA and MACKEREL	Year-round	No min. size. No daily limit except NORTHERN BLUEFIN, SKIPJACK, and YELLOWFIN TUNA daily limit of 2 each.
HERRING, SAND LANCE, and SMELT	Year-round	No min. size. Daily limit 10 lbs., all species combined. All SMELT caught must be kept and count toward the daily limit except CLOSED to Columbia River SMELT (eulachon). For SMELT: East of the Bonilla-Tatoosh line - jig gear may be used 7 days a week. Dipnets may be used from 6:00 a.m. until 10:00 p.m. Fridays through Tuesdays. West of the Bonilla-Tatoosh line - dipnets and jigs may be used 7 days a week.
ANCHOVY and SARDINE	Year-round	No min. size. Daily limit 25 lbs., all species combined. May be taken by a cast net.
PACIFIC HALIBUT	Check the WDFW website at wdfw.wa.gov/fishing/creel/halibut or call (360) 902-2700 in April 2017 for information on PACIFIC HALIBUT seasons and regulations. No min. size. Daily limit 1. See HALIBUT and BOTTOMFISH closure on previous page.	

BOTTOMFISH

BOTTOMFISH

West of Bonilla-Tatoosh Line	Year-round	Check the WDFW website at wdfw.wa.gov or call (360) 902-2700 in January 2017 for potential updates. Daily limit is a total of 12 BOTTOMFISH (see definition page 10), regardless of species, subject to individual limits and seasons shown below. See HALIBUT and BOTTOMFISH Closure Area and 20 fathom restriction on previous page.
East of Bonilla-Tatoosh Line	Year-round	Daily limit is a total of 10 BOTTOMFISH (see definition page 10), regardless of species, subject to individual limits and seasons shown below. Fishing for BOTTOMFISH prohibited in waters deeper than 120 feet as defined by the coordinates of the BOTTOMFISH Closure next page.
LINGCOD	Open through Oct. 15, 2016	Min. size 22". Daily limit 2. West of the Bonilla-Tatoosh Line: no retention or possession of LINGCOD seaward of line approximating 20 fathoms from May 9 through Labor Day (except when HALIBUT is open). See 20 fathom restriction on previous page. East of Bonilla-Tatoosh line: See BOTTOMFISH closure next page.
Check the WDFW website at wdfw.wa.gov or call (360) 902-2700 in January 2017 for information on the 2017 LINGCOD season.		
SURFPERCH	Year-round	No min. size. Daily limit 12. Except SHINER PERCH daily limit 15: not included in BOTTOMFISH limit.
ROCKFISH		
West of Bonilla-Tatoosh Line	Year-round	No min. size. Daily limit 10. No CANARY or YELLOWEYE may be retained. No retention or possession of rockfish seaward of a line approximating 20 fathoms from May 9 through Labor Day. See 20 fathom restriction on previous page.
East of Bonilla-Tatoosh Line	Year-round	No min. size. Daily limit 6. Only BLUE and BLACK may be retained. See BOTTOMFISH Closure next page.
CABEZON	Year-round	Min. size 18". Daily limit 1.
WOLF-EEL	Year-round	CLOSED to retention.
SIXGILL, SEVENGILL, and THRESHER SHARKS	CLOSED	CLOSED to fishing for, retaining, or possessing. SIXGILL SHARK may not be removed from the water.
OTHER FOOD FISH	Year-round	No min. size. Daily limit 2 of each species. See definition page 11.
ALL OTHER FISH	CLOSED	CLOSED to fishing for, retaining, or possessing.

Bonilla-Tatoosh Line: A line running from the western end of Cape Flattery 48°22.86'N, 124°43.91'W, to Tatoosh Island Lighthouse 48°23.49'N, 124°44.21'W, then in a straight line to Bonilla Point on Vancouver Island 48°35.73'N, 124°43'W. See map on previous page.

Kydaka Point Closure: May 31-Sept. 21: waters south of a line from Kydaka Point westerly approximately 4 miles to Shipwreck Point CLOSED to fishing for SALMON. See map on page 106.

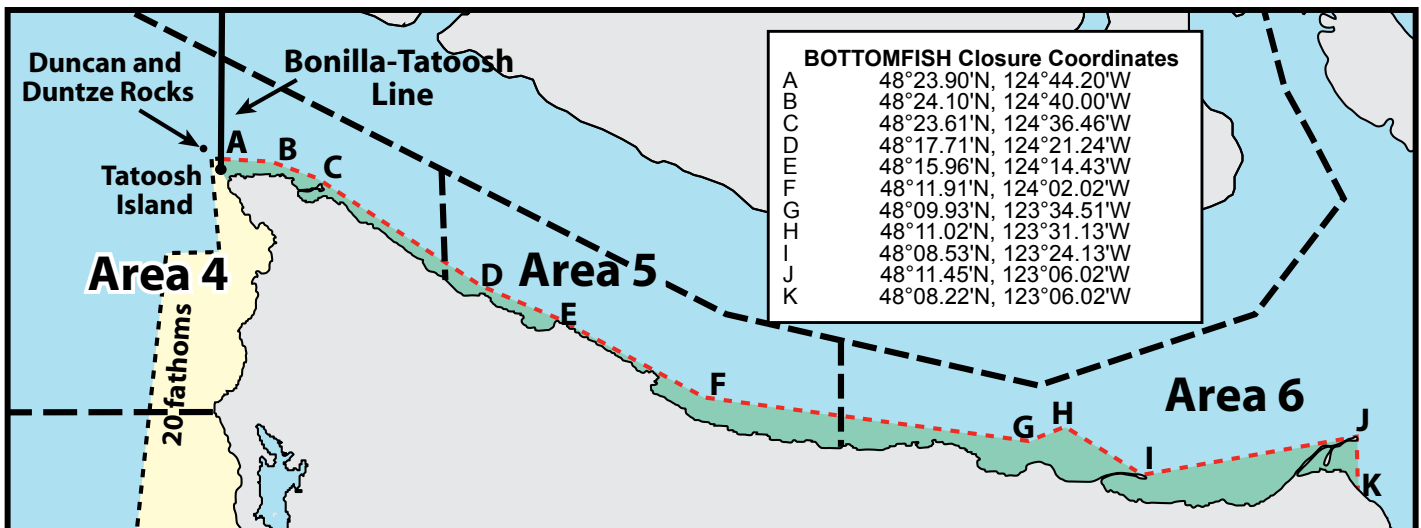
Marine Area 5 - Sekiu and Pillar Point

(From mouth of the Sekiu River east to Low Point, mouth of the Lyre River) See map on following page.

SPECIES	SEASON	ADDITIONAL RULES
SALMON - ENTIRE AREA	July 1-Aug. 15	CHINOOK - min. size 22". Other SALMON species - no min. size. Daily limit 2 (combined) plus 2 additional SOCKEYE. Release COHO, CHUM, and wild CHINOOK. See Kydaka Point Closure next page. Season may close earlier if CHINOOK guideline is attained.
	Feb. 16-Apr. 30	CHINOOK - min. size 22". Other SALMON species - no min. size. Daily limit 2 (combined). Release wild CHINOOK and COHO.
TROUT	Year-round	Catch-and-release except up to 2 hatchery STEELHEAD may be retained.
STURGEON	Year-round	Catch-and-release.
TUNA and MACKEREL	Year-round	No min. size. No daily limit except NORTHERN BLUEFIN, SKIPJACK, and YELLOWFIN TUNA daily limit of 2 each.
HERRING, ANCHOVY, SARDINE, SAND LANCE, and SMELT	Year-round	No min. size. Daily limit 10 lbs., all species combined. All SMELT caught must be kept and count toward the daily limit except CLOSED to Columbia River SMELT (eulachon). For SMELT: Jig gear may be used 7 days a week. Dipnets may be used from 6:00 a.m. until 10:00 p.m. Fridays through Tuesdays.
PACIFIC HALIBUT	Check the WDFW website at wdfw.wa.gov/fishing/creel/halibut or call (360) 902-2700 in April 2017 for information on PACIFIC HALIBUT seasons and regulations. No min. size. Daily limit 1.	
BOTTOMFISH	Year-round season. Daily limit is a total of 15 BOTTOMFISH (see definition page 10) regardless of species, subject to individual limits and seasons shown below. Fishing for BOTTOMFISH prohibited in waters deeper than 120 feet as defined by the coordinates under the BOTTOMFISH Closure below. Exception: retention of LINGCOD and PACIFIC COD allowed on days when HALIBUT is open.	
LINGCOD	May 1-June 15 May 21-June 15	Hook and line season. Min. size 26". Max. size 36". Daily limit 1. Spearfishing season. Max. size 36". Daily limit 1.
SURFPERCH	Year-round	No min. size. Daily limit 10. Except SHINER PERCH daily limit 15: not included in BOTTOMFISH limit.
ROCKFISH	West of Slip Point May 1-Sept. 30 East of Slip Point May 1-Sept. 30	
PACIFIC COD, POLLOCK, HAKE	Year-round	No min. size. Daily limit 2 of each species.
CABEZON	May 1-Nov. 30	Min. size 18". Daily limit 1.
WOLF-EEL	Year-round	CLOSED to retention.
SIXGILL, SEVENGILL, and THRESHER SHARKS	CLOSED	CLOSED to fishing for, retaining, or possessing. SIXGILL SHARK may not be removed from the water.
OTHER FOOD FISH	Year-round	No min. size. Daily limit 2 of each species. See definition page 11.
ALL OTHER FISH	CLOSED	CLOSED to fishing for, retaining, or possessing.

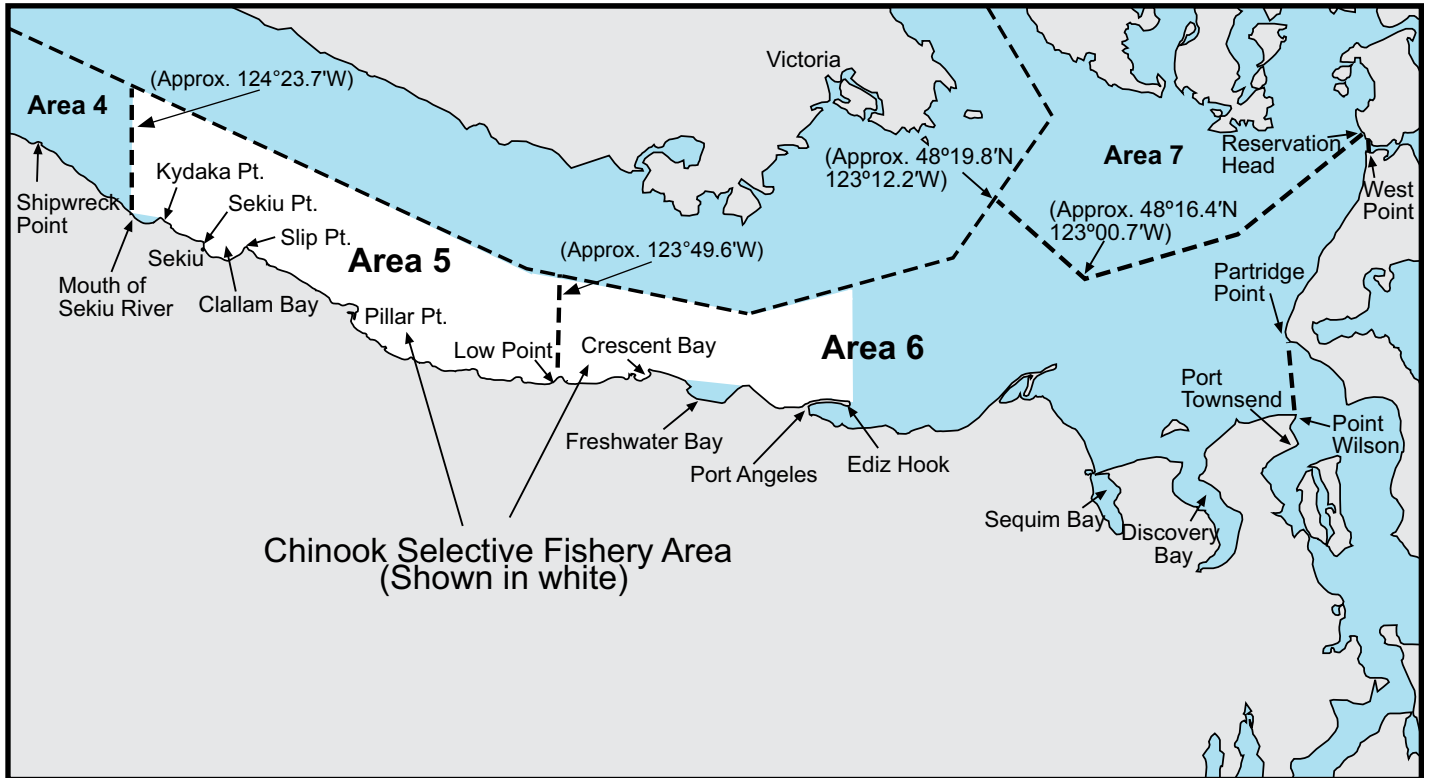
BOTTOMFISH

BOTTOMFISH Closure: Fishing for BOTTOMFISH prohibited in waters deeper than 120 feet as defined by the coordinates listed below shown by the dashed red line. **Exception:** retention of LINGCOD and PACIFIC COD allowed on days when HALIBUT is open.

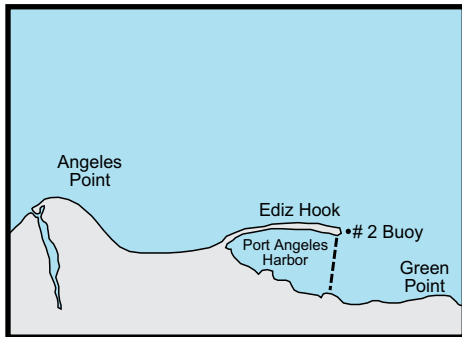


Marine Areas

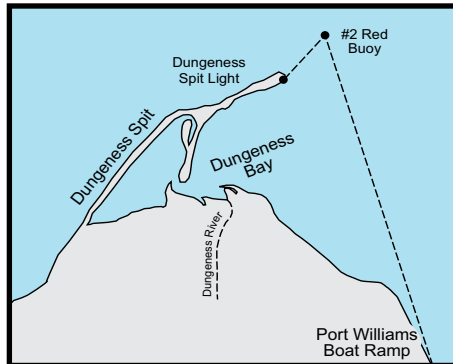
Marine Area 5 and 6 Map



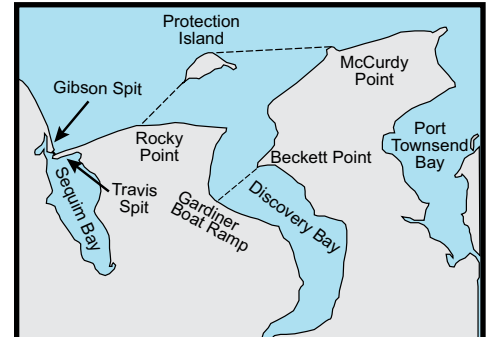
Kydaka Point Closure: July 1-Aug. 15: waters south of a line from Kydaka Point westerly approximately 4 miles to Shipwreck Point CLOSED to fishing for SALMON. See map above.



Port Angeles Harbor Closure: July 1-Aug. 15: waters of Port Angeles Harbor west of a line from the tip of Ediz Hook to the ITT Rayonier Dock CLOSED to fishing for SALMON.



Dungeness Bay Fishery and Closure: Waters of Dungeness Bay inside of a line from Dungeness Spit Lighthouse to the #2 Red Buoy, then to the Port Williams boat ramp. See rules next page.



Discovery Bay Shrimp District: Waters south of a line from McCurdy Point on the Quimper Peninsula to the northern tip of Protection Island then from the western end of Protection Island to Rocky Point on the Miller Peninsula and all waters of Discovery Bay.

Marine Area 6 - East Juan de Fuca Strait

(From Low Point east to the Partridge Point – Point Wilson line north to the line from Trial Island (near Victoria B.C.) – Vessel Traffic Separation Buoy “R” – Smith Island to the Lawson Reef Buoy to Northwest Island to the Initiative 77 marker on Fidalgo Island and west of the line from Reservation Head to West Point)

SPECIES	SEASON	ADDITIONAL RULES
SALMON	SALMON (CHINOOK Selective Fishery) West of a true north/south line through the #2 Buoy immediately east of Ediz Hook	July 1-Aug. 15 CHINOOK - min. size 22". Other SALMON species - no min. size. Daily limit 2 (combined) plus 2 additional SOCKEYE. Release COHO, CHUM, and wild CHINOOK. See closures below.
	(CHINOOK Release Area) East of a true north/south line through the #2 Buoy immediately east of Ediz Hook	July 1-Aug. 15 No min. size. Daily limit 2 (combined) plus 2 additional PINK. Release CHINOOK, COHO, and CHUM. See closures below.
	SALMON - ENTIRE AREA	Dec. 1-Apr. 15 CHINOOK - min. size 22". Other SALMON species - no min. size. Daily limit 2 (combined). Release COHO and wild CHINOOK. See Dungeness Bay Fishery and Closure below. Season may close earlier if CHINOOK guideline is attained.
	Dungeness Bay Fishery (see below for boundaries)	Oct. 1-Oct. 31 No min. size. Daily limit 2 COHO only. Release wild COHO.
	TROUT	Year-round Catch-and-release except up to 2 hatchery STEELHEAD may be retained. See Freshwater Bay Closure below.
	STURGEON	Year-round Catch-and-release.
	MACKEREL	Year-round No min. size. No daily limit.
HERRING, ANCHOVY, SARDINE, SAND LANCE, and SMELT	Year-round No min. size. Daily limit 10 lbs., all species combined. All SMELT caught must be kept and count toward the daily limit except CLOSED to Columbia River SMELT (eulachon). HERRING - CLOSED Jan. 16-Apr. 15 south of a line from Ediz Hook to Partridge Point. For SMELT: Jig gear may be used 7 days a week. Dipnets may be used from 6:00 a.m. until 10:00 p.m. Fridays through Tuesdays.	
PACIFIC HALIBUT	Check the WDFW website at wdfw.wa.gov/fishing/creel/halibut or call (360) 902-2700 in April 2017 for information on PACIFIC HALIBUT seasons and regulations. No min. size. Daily limit 1.	
BOTTOMFISH	BOTTOMFISH	Year-round season. Daily limit is a total of 15 BOTTOMFISH (see definition page 10) regardless of species, subject to individual limits and seasons shown below. See Freshwater Bay Closure below. Fishing for BOTTOMFISH prohibited in waters deeper than 120 feet east of the easternmost point of Dungeness Spit, and prohibited in waters deeper than 120 feet west of the easternmost point of Dungeness Spit as defined by the coordinates of the BOTTOMFISH Closure (see page 105). Exception: retention of LINGCOD, and PACIFIC COD allowed on days when HALIBUT is open.
	LINGCOD	May 1-June 15 May 21-June 15 Hook and line season. Min. size 26". Max. size 36". Daily limit 1. Spearfishing season. Max. size 36". Daily limit 1.
	SURFPERCH	Year-round No min. size. Daily limit 10. Except SHINER PERCH daily limit 15: not included in BOTTOMFISH limit.
	ROCKFISH	CLOSED CLOSED to fishing for, retaining, or possessing.
	PACIFIC COD, POLLOCK, HAKE	Year-round No min. size. Daily limit 2 of each species.
	CABEZON	May 1-Nov. 30 Min. size 18". Daily limit 1.
	WOLF-EEL	Year-round CLOSED to retention.
	SIXGILL, SEVENGILL, and THRESHER SHARKS	CLOSED CLOSED to fishing for, retaining, or possessing. SIXGILL SHARK may not be removed from the water.
	OTHER FOOD FISH	Year-round No min. size. Daily limit 2 of each species. See definition page 11.
	ALL OTHER FISH	CLOSED CLOSED to fishing for, retaining, or possessing.

CLOSURES:

Dungeness Bay Fishery and Closure: Waters of Dungeness Bay inside of a line from Dungeness Spit Lighthouse to the #2 Red Buoy, then to the Port Williams boat ramp. Oct. 1-Oct. 31: OPEN to fishing for hatchery COHO SALMON. CLOSED to fishing for SALMON at all other times. See Dungeness Bay Fishery above for rules.

Freshwater Bay Closure: July 1-Oct. 31: waters of Freshwater Bay south of a line from Angeles Point westerly approximately 4 miles to Observatory Point (Bachelor Rock) CLOSED to fishing for ALL species.

Port Angeles Harbor Closure: July 1-Aug. 15: waters of Port Angeles Harbor west of a line from the tip of Ediz Hook to the ITT Rayonier Dock CLOSED to fishing for SALMON.

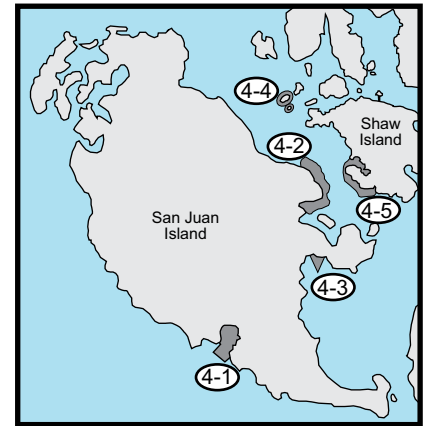
Sequim Bay Closure: July 1-Aug. 15: waters of Sequim Bay south of a line from the southern end of Gibson Spit to the west end of Travis Spit CLOSED to fishing for SALMON.

Discovery Bay Closure: July 1-Aug. 15: waters of Discovery Bay south of a line from the Gardiner boat ramp to Beckett Point CLOSED to fishing for SALMON.

Marine Area 7 Map



- ① **Bellingham Bay Closure and Fishery:** Waters of Bellingham and Padilla bays south and east of a line from Gooseberry Pt. to Sandy Pt. to Pt. Migley, from Carter Pt. to north tip of Vendovi Island to Clark Pt., and true west from Yellow Bluff (southwest corner of Guemes Island) to Yellow Bluff Reef Range Marker to Washington State Dept. of Transportation ferry terminal dock east of Shannon Pt. and north of the railroad bridges at Swinomish Slough.
Apr. 1-Aug.15: CLOSED to fishing for SALMON.
Aug. 16-Oct. 31: OPEN to fishing for SALMON. (see rules for Bellingham Bay Fishery on next page).
Nov. 1-Mar. 31: same rules as Marine Area 7 - ENTIRE AREA.
- ② **Samish Bay Closure:** Waters of Samish Bay lying south of a line running true east from Fish Point - same rules as Marine Area 7 - ENTIRE AREA, except Apr. 1-Apr. 30 and July 1-Oct. 15: CLOSED to fishing for SALMON and Oct. 16-Oct. 31: same rules as Bellingham Bay Fishery.
- ③ **Lummi Indian Reservation and Lummi Bay Closure:** Reservation CLOSED to non-Indian fishing and/or access. Waters east of a line from Gooseberry Point to Sandy Point same rules as Marine Area 7 - ENTIRE AREA except Sept. 8-Oct. 15: CLOSED to fishing for SALMON.



San Juan Islands Marine Preserve
Closed to all shellfish and bottomfish activities (except crabbing in Parks Bay on Shaw Island).

- ④ **San Juan Islands Marine Preserve (False Bay, Friday Harbor, Argyle Lagoon, Yellow and Low Islands, and Shaw Island):** Closed to all SHELLFISH and BOTTOMFISH activity (except crabbing in Parks Bay on Shaw Island). Yellow and Low Islands also closed to SALMON fishing.
- ④-1 **False Bay:** The tidelands and bedlands of False Bay on San Juan Island, including all University of Washington (UW)-owned tidelands and bedlands beginning at a marker 400' east of the east entrance of False Bay and extending to the entrance of False Bay, all UW-owned tidelands and bedlands within a line beginning at the UW marker on the shore at the east entrance of False Bay, projected 500 yards offshore, then northwest to a point 500 yards offshore along a line projected from a UW marker on the shore at the west side of a small peninsula at the west entrance of False Bay, then to shore along the line to the marker, and all UW-owned tidelands west of the marker to a UW marker 600' west of the small peninsula.
- ④-2 **Friday Harbor:** Those tidelands and bedlands adjacent to San Juan Island within a line beginning on the shore 500 yards west of Point Caution, then 500 yards offshore, then south and east following the shoreline to the intersection with a line projected from a UW marker located 100' north of the north entrance of the floating breakwater of the Port of Friday Harbor and projected toward Reid Rock Buoy, then along the line to shore on San Juan Island.
- ④-3 **Argyle Lagoon:** Those UW-owned tidelands and all bedlands enclosed by the inner spit of Argyle Lagoon on San Juan Island.
- ④-4 **Yellow and Low Islands Preserve:** All tidelands and bedlands within 300 yards of Yellow Island and 300 yards of Low Island. Also closed to SALMON fishing.
- ④-5 **Shaw Island:** Those tidelands and bedlands within a line beginning at a UW marker on the shore at Hicks Bay 122°58.25'W longitude, then due south 500 yards, then north and west at a distance of 500 yards from shore to the intersection with a line projected 261° true from a UW marker on the shore of Parks Bay, which passes just south of the unnamed island at the north end of Parks Bay, then along the line to the shore of Shaw Island, including all tidelands and bedlands of Parks Bay south of the line.

Marine Area 7 - San Juan Islands

(All marine waters north of the Trial Island line described under Area 6 to the United States-Canada boundary)

SALMON

SPECIES	SEASON	ADDITIONAL RULES
SALMON - ENTIRE AREA	July 1-July 31	CHINOOK - min. size 22". Other SALMON species - no min. size. Daily limit 2 (combined) plus 2 additional SOCKEYE. Release COHO and wild CHINOOK. See Bellingham Bay Closure and Fishery, Samish Bay Closure, and Yellow and Low Islands Preserve on previous page.
	Aug. 1-Sept. 30	CHINOOK - min. size 22". Other SALMON species - no min. size. Daily limit 2 (combined) plus 2 additional SOCKEYE. Only 1 CHINOOK may be retained. Release COHO and CHUM. See Southern Rosario Strait/ Eastern Strait of Juan de Fuca Closure below. See Bellingham Bay Closure and Fishery, Samish Bay Closure, Lummi Reservation and Bay Closure, and Yellow and Low Islands Preserve on previous page.
	Oct. 1-Oct. 31	CHINOOK - min. size 22". Other SALMON species - no min. size. Daily limit 2 (combined). Release COHO and wild CHINOOK. See Bellingham Bay Closure and Fishery, Samish Bay Closure, Lummi Reservation and Bay Closure, and Yellow and Low Islands Preserve on previous page. Season may close earlier if CHINOOK guideline is attained.
	Dec. 1-Apr. 30	CHINOOK - min. size 22". Other SALMON species - no min. size. Daily limit 2 (combined). Release COHO and wild CHINOOK. See Bellingham Bay Closure and Fishery, and Yellow and Low Islands Preserve on previous page. Season may close earlier if CHINOOK guideline is attained.
Bellingham Bay Fishery (see ① on previous page for boundaries)	Aug. 16-Oct. 31	CHINOOK - min. size 22". Other SALMON species - no min. size. Daily limit 4 (combined). Up to 2 CHINOOK may be retained. Release COHO. Oct. 1-Oct. 31: release wild CHINOOK. See Samish Bay Closure on previous page.
TROUT	Year-round	Catch-and-release except up to 2 hatchery STEELHEAD may be retained.
STURGEON	Year-round	Catch-and-release.
MACKEREL	Year-round	No min. size. No daily limit.
HERRING, ANCHOVY, SARDINE, SAND LANCE, and SMELT	Year-round	No min. size. Daily limit 10 lbs., all species combined. All SMELT caught must be kept and count toward the daily limit except CLOSED to Columbia River SMELT (eulachon). HERRING - CLOSED year-round north of a line from Sandy Point to Patos Island to the Canadian boundary. For SMELT: Jig gear may be used 7 days a week. Dipnets may be used from 6:00 a.m. until 10:00 p.m. Fridays through Tuesdays.
PACIFIC HALIBUT	Check the WDFW website at wdfw.wa.gov/fishing/creel/halibut or call (360) 902-2700 in April 2017 for information on PACIFIC HALIBUT seasons and regulations. No min. size. Daily limit 1.	

BOTTOMFISH

BOTTOMFISH	Year-round season. Daily limit is a total of 15 BOTTOMFISH (see definition page 10) regardless of species, subject to individual limits and seasons shown below. See closures on previous page. Fishing for BOTTOMFISH prohibited in waters deeper than 120 feet.	
LINGCOD	May 1-June 15 May 21-June 15	Hook and line season. Min. size 26". Max. size 36". Daily limit 1. Spearfishing season. Max. size 36". Daily limit 1.
SURFPERCH	Year-round	No min. size. Daily limit 10. Except SHINER PERCH daily limit 15: not included in BOTTOMFISH limit.
ROCKFISH	CLOSED	CLOSED to fishing for, retaining, or possessing.
PACIFIC COD, POLLOCK, HAKE	Year-round	No min. size. Daily limit 2 of each species.
CABEZON	May 1-Nov. 30	Min. size 18". Daily limit 1.
WOLF-EEL	Year-round	CLOSED to retention.
SIXGILL, SEVENGILL, and THRESHER SHARKS	CLOSED	CLOSED to fishing for, retaining, or possessing. SIXGILL SHARK may not be removed from the water.
OTHER FOOD FISH	Year-round	No min. size. Daily limit 2 of each species. See definition page 11.
ALL OTHER FISH	CLOSED	CLOSED to fishing for, retaining, or possessing.

- ⑤ **Southern Rosario Strait/Eastern Strait of Juan de Fuca Closure:** Waters of Area 7 in Rosario Strait and the eastern portion of the Strait of Juan de Fuca southerly of a line running true south from the westernmost point on Fidalgo Head to Burrows Island, then westerly and southerly along the shore of Burrows Island to the Burrows Island Lighthouse, then westerly to Bird Rocks, then westerly from Bird Rocks to the southernmost point on Decatur Island, then southerly across Lopez Pass to Lopez Island and following the shore of Lopez Island southerly and westerly to Iceberg Point, then from Iceberg Point to Cattle Point, then south southwest to the Salmon Bank Buoy, and then true south from the Salmon Bank Buoy to the Area 7 boundary - Aug. 1-Sept. 30: CLOSED to fishing for SALMON. Oct. 1-July 31: same rules as Marine Area 7 - ENTIRE AREA.

Be Whale Wise

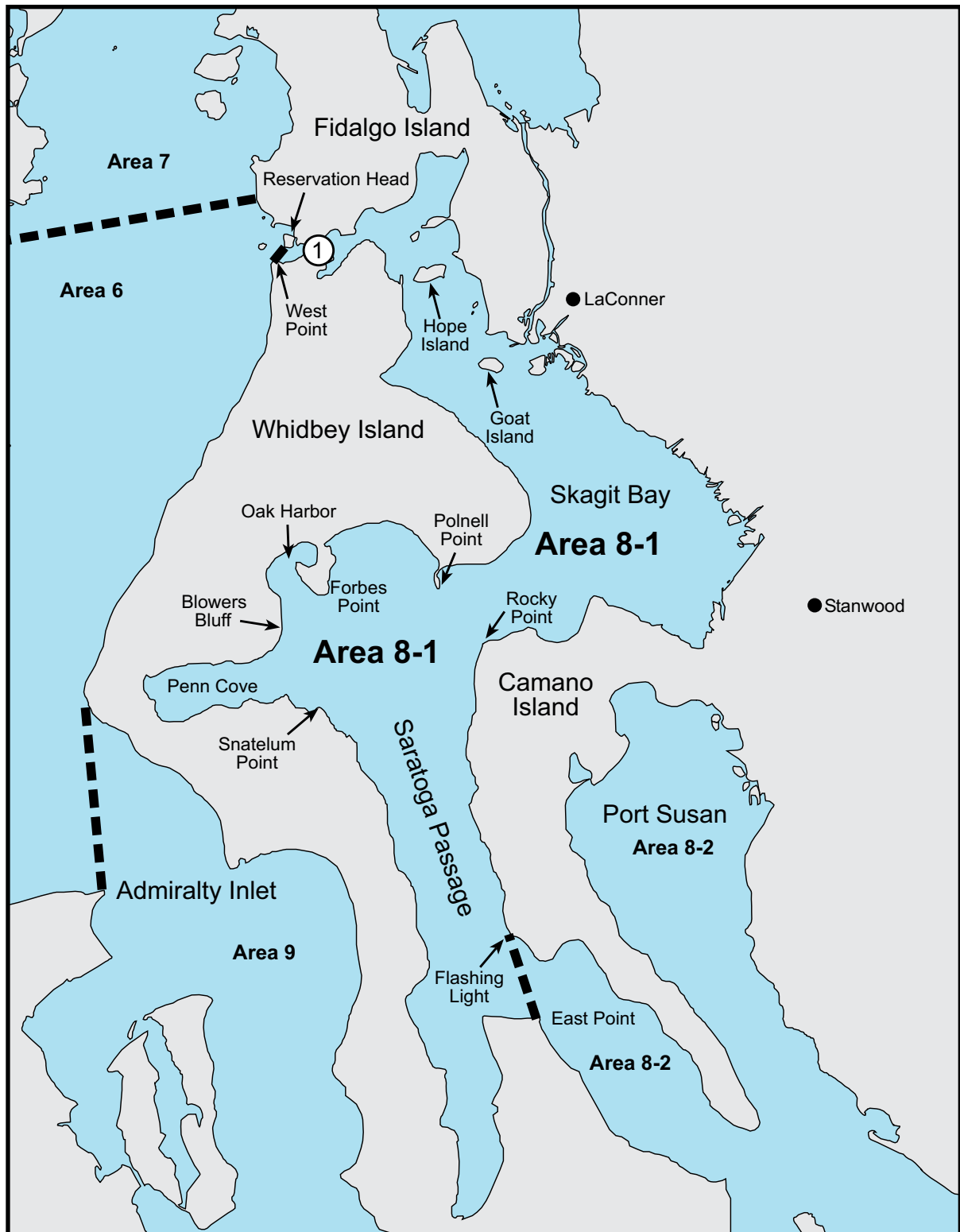


Recreational anglers and boaters are not exempt from laws protecting killer whales and other marine mammals.

Know the laws.

Learn more at www.nwr.noaa.gov/marine-mammals or wdfw.wa.gov/conservation/orca

Marine Area 8-1 Map



① Deception Pass (Octopus Protection Area): CLOSED to the harvest of OCTOPUS.

Pacific Herring

Size: up to 10"

Color: silver with dark blue-green back.

Look for: deeply forked tail and lack of adipose fin.



Marine Area 8-1 - Deception Pass, Hope Island, and Skagit Bay

(From West Point to Reservation Head eastward through Deception Pass, including all waters of Swinomish Slough and Skagit Bay, and the portion of Saratoga Passage north and west of a line from East Point Light to light on Camano Island (Saratoga Pass light #4 Fl Red 4 Sec))

SPECIES	SEASON	ADDITIONAL RULES
SALMON - ENTIRE AREA	Nov. 1-Apr. 30	CHINOOK - min. size 22". Other SALMON species - no min. size. Daily limit 2 (combined). Release COHO and wild CHINOOK. Season may close earlier if CHINOOK guideline is attained.
TROUT	Year-round	Catch-and-release except up to 2 hatchery STEELHEAD may be retained.
STURGEON	Year-round	Catch-and-release.
MACKEREL	Year-round	No min. size. No daily limit.
HERRING, ANCHOVY, SARDINE, SAND LANCE, SMELT	Year-round	No min. size. Daily limit 10 lbs., all species combined. All SMELT caught must be kept and count toward the daily limit except CLOSED to Columbia River SMELT (eulachon). For SMELT: Jig gear may be used 7 days a week. Dipnets may be used from 6:00 a.m. until 10:00 p.m. Fridays through Tuesdays.
PACIFIC HALIBUT	Check the WDFW website at wdfw.wa.gov/fishing/creel/halibut or call (360) 902-2700 in April 2017 for information on PACIFIC HALIBUT seasons and regulations. No min. size. Daily limit 1.	
BOTTOMFISH	Year-round season. Daily limit is a total of 15 BOTTOMFISH (see definition page 10) regardless of species, subject to individual limits and seasons shown below. Fishing for BOTTOMFISH prohibited in waters deeper than 120 feet.	
LINGCOD	May 1-June 15 May 21-June 15	Hook and line season. Min. size 26". Max. size 36". Daily limit 1. Spearfishing season. Max. size 36". Daily limit 1.
SURFPERCH	Year-round	No min. size. Daily limit 10. Except SHINER PERCH daily limit 15: not included in BOTTOMFISH limit.
ROCKFISH	CLOSED	CLOSED to fishing for, retaining, or possessing.
PACIFIC COD, POLLOCK, HAKE, and WOLF-EEL	Year-round	CLOSED to retention.
SIXGILL, SEVENGILL, and THRESHER SHARKS	CLOSED	CLOSED to fishing for, retaining, or possessing. SIXGILL SHARK may not be removed from the water.
CABEZON	May 1-Nov. 30	Min. size 18". Daily limit 1.
OTHER FOOD FISH	Year-round	No min. size. Daily limit 2 of each species. See definition page 11.
ALL OTHER FISH	CLOSED	CLOSED to fishing for, retaining, or possessing.

BOTTOMFISH



Pacific Cod

Brown to grey body with lighter mottling. Three fins on back and a large "whisker" under lower jaw. Also called true cod and grey cod.



Pacific Hake

Body dark or silver grey becoming silvery below. Two fins on back, the second being deeply notched. Black inside mouth. Large mouth with sharp teeth. Also called whiting.



Cabezon

Body olive green to grey with lighter mottling. Two fins on back. Skin flap between nostrils. Small teeth.

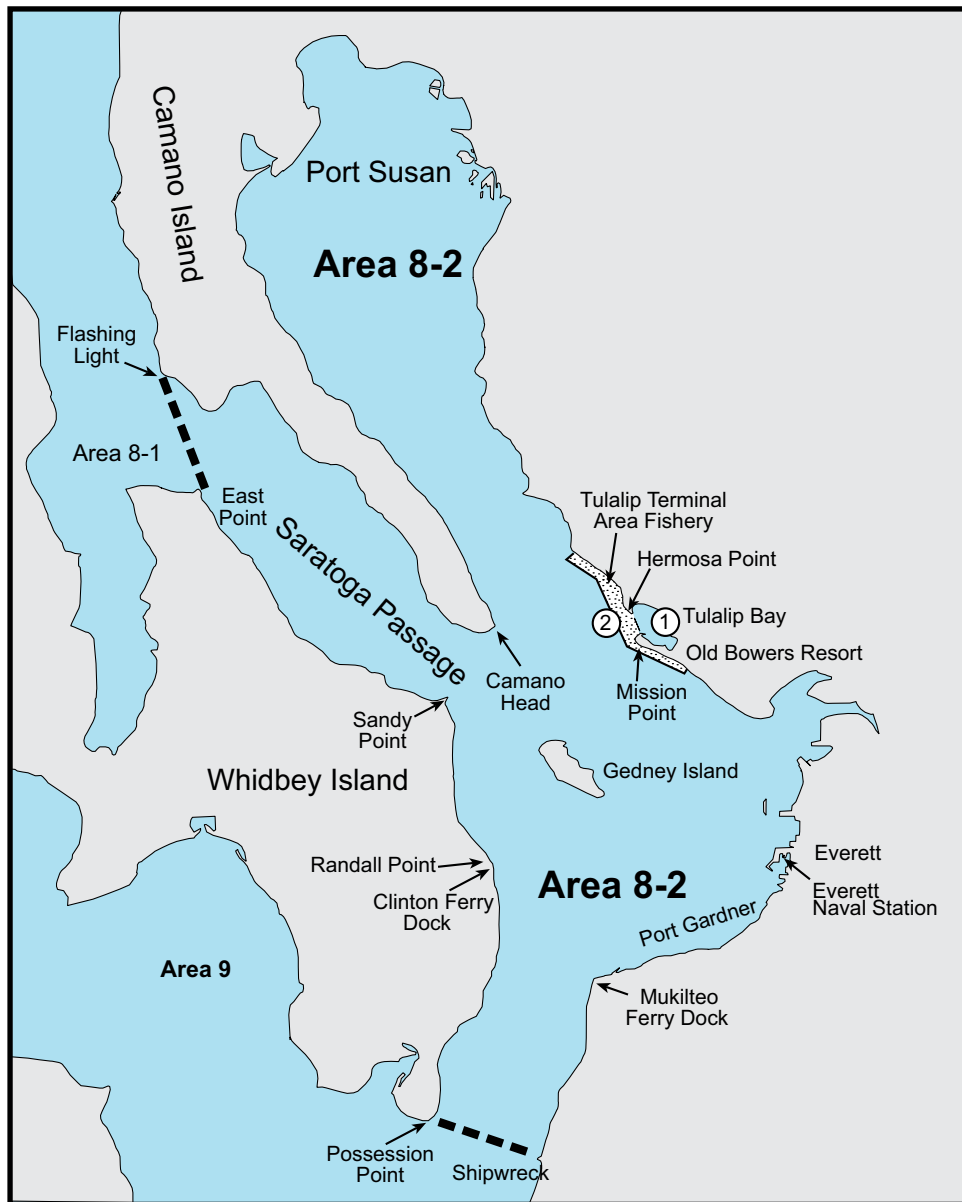


Walleye Pollock

Body brown with mottling, usually with several stripes along the body. Three fins on back. The "whisker" under lower jaw is absent or very small. Large eye with small pupil.

Marine Areas

Marine Area 8-2 Map



- ① **Tulip Bay Closure:** Closed to all fishing east of a line from Mission Point to Hermosa Point.
- ② **Tulip Terminal Area Salmon Fishery:** Waters west of a line from Mission Point to Hermosa Point and contained within 2,000' off shore between the pilings at Old Bowers Resort (48°02.88'N, 122°16.42'W) to 2,000' from shore (48°02.63'N, 122°16.79'W) and north to 2,000' from shore (48°04.36'N, 122°19.06'W) of the boundary marker approximately 1.4 miles north of Hermosa Point (48°04.57'N, 122°18.64'W). Same SALMON rules as Marine Area 8-2 - ENTIRE AREA, except July 1–Sept. 25, 2016 and May 26–June 30, 2017: see Tulalip Terminal Area Fishery on next page for rules.



Lingcod

Body dark brown, grey or green with mottling on sides. A single long fin on back with only one notch. Large mouth with large teeth. Can reach five feet in length.



Dogfish Shark

Dark brown upper body with white belly, white spots sometimes on upper body. Single prominent spines in front of each dorsal fin. Lacks an anal fin.

Marine Area 8-2 - Port Susan and Port Gardner

(East of East Point Light-Camano Island Light line (described in Area 8-1) and north of the Possession Point-Shipwreck line)

SALMON

SPECIES	SEASON	ADDITIONAL RULES
SALMON - ENTIRE AREA	Nov. 1-Apr. 30	CHINOOK - min. size 22". Other SALMON species - no min. size. Daily limit 2 (combined). Release COHO and wild CHINOOK. See Tulalip Bay Closure on previous page. Season may close earlier if CHINOOK guideline is attained.
Tulalip Terminal Area Fishery (see ② on previous page for boundaries)	July 1-Sept. 5, 2016 May 26-June 30, 2017	Open Fridays through Noon Mondays ONLY. CHINOOK - min. size 22". Other SALMON species - no min. size. Daily limit 2 (combined). Release COHO and wild CHINOOK. See Tulalip Bay Closure on previous page. Anglers may fish with two poles with Two-Pole Endorsement.
	Sept. 10-Sept. 25	Open Saturdays and Sundays ONLY. CHINOOK - min. size 22". Other SALMON species - no min. size. Daily limit 2 (combined). See Tulalip Bay Closure on previous page. Anglers may fish with two poles with Two-Pole Endorsement.
TROUT	Year-round	Catch-and-release except up to 2 hatchery STEELHEAD may be retained.
STURGEON	Year-round	Catch-and-release.
MACKEREL	Year-round	No min. size. No daily limit.
HERRING, ANCHOVY, SARDINE, SAND LANCE, and SMELT	Year-round	No min. size. Daily limit 10 lbs., all species combined. All SMELT caught must be kept and count toward the daily limit except CLOSED to Columbia River SMELT (eulachon). For SMELT: Jig gear may be used 7 days a week. Dipnets may be used from 6:00 a.m. until 10:00 p.m. Fridays through Tuesdays.
PACIFIC HALIBUT	Check the WDFW website at wdfw.wa.gov/fishing/creel/halibut or call (360) 902-2700 in April 2017 for information on PACIFIC HALIBUT seasons and regulations. No min. size. Daily limit 1.	

BOTTOMFISH

SPECIES	SEASON	ADDITIONAL RULES
BOTTOMFISH	Year-round season. Daily limit is a total of 15 BOTTOMFISH (see definition page 10) regardless of species, subject to individual limits and seasons shown below. See Tulalip Bay closure on previous page. Fishing for BOTTOMFISH prohibited in waters deeper than 120 feet.	
LINGCOD	May 1-June 15 May 21-June 15	Hook and line season. Min. size 26". Max. size 36". Daily limit 1. Spearfishing season. Max. size 36". Daily limit 1.
SURFPERCH	Year-round	No min. size. Daily limit 10. Except SHINER PERCH daily limit 15: not included in BOTTOMFISH limit.
ROCKFISH	CLOSED	CLOSED to fishing for, retaining, or possessing.
PACIFIC COD, POLLOCK, HAKE, and WOLF-EEL	Year-round	CLOSED to retention.
SIXGILL, SEVENGILL, and THRESHER SHARKS	CLOSED	CLOSED to fishing for, retaining, or possessing. SIXGILL SHARK may not be removed from the water.
CABEZON	May 1-Nov. 30	Min. size 18". Daily limit 1.
OTHER FOOD FISH	Year-round	No min. size. Daily limit 2 of each species. See definition page 11.
ALL OTHER FISH	CLOSED	CLOSED to fishing for, retaining, or possessing.



Pile Perch

Size: up to 17"

Color: dusky to silvery gray, with dark bar in middle of body.

Look for: deeply forked tail and dark spot on gill cover.



Rock Sole

Size: up to 23"

Color: white on one side; top of body brown to green, small mouth.

Look for: right-eyed fish, lateral line arches above the pectoral fin.



Sanddab

Size: up to 16"

Color: one side is off-white; other side is brown with mottling.

Look for: left-eyed fish, squared caudal fin.



Striped Perch

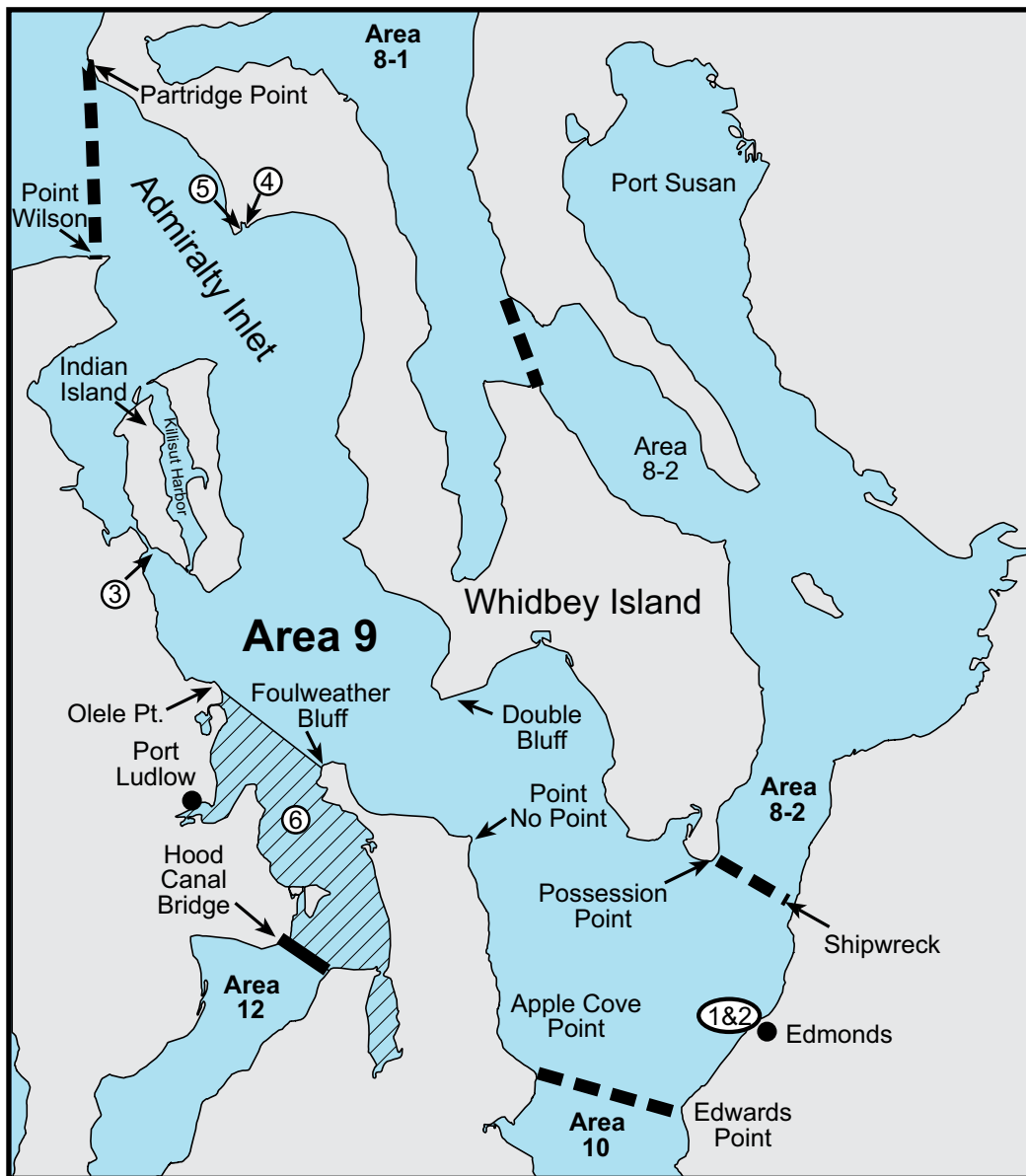
Size: up to 15"

Color: blue and yellow stripes on side of body.

Look for: bright color pattern.

Marine Areas

Marine Area 9 Map



- ① **Edmonds Public Fishing Pier:** Waters inside a line from the boundary marker on the north breakwater to the southernmost marker buoy; then to the northernmost marker buoy; then to the north end of the city of Edmonds public beach. CLOSED to fishing for Food Fish and to the harvest of SHELLFISH except when fishing from the pier.
- ② **Brackett's Landing Shoreline Sanctuary:** Bedlands and tidelands owned by the city of Edmonds at Brackett's Landing Shoreline Sanctuary and the water column above them, including all of the area known as Edmonds Underwater Park. CLOSED to all harvest.
- ③ **Port Townsend Ship Canal/Portage Canal:** Tidelands on the eastern shore of the canal between Port Townsend Bay and Oak Bay.
- ④ **Keystone Conservation Area:** All waters, bedlands, and tidelands from Extreme High Water (EHW) out to 600' offshore of EHW that are located between the jetty at Keystone Harbor and the eastern side of the old military wharf (located east of the jetty). CLOSED to all harvest.
- ⑤ **Admiralty Head Marine Preserve:** All waters and bedlands below the Extreme Low Water starting at the extreme low tide line at 48°9.46'N, 122°40.88'W at the sign (in Fort Casey State Park), extending 400 yards offshore and northward parallel to the beach for 0.6 nautical miles. CLOSED to all harvest except sea urchins and sea cucumbers.
- ⑥ **Hood Canal Closure:** Waters of Area 9 south of a line from Foulweather Bluff to Olele Point, July 16-Aug. 15: CLOSED to fishing for SALMON.

Marine Area 9 - Admiralty Inlet

(All waters inside and south of the Partridge Point – Point Wilson line, south and west of a line from Possession Point 110° true to shipwreck, north of the Hood Canal Bridge, and north of the Apple Cove Point-Edwards Point line.)

SALMON

SPECIES	SEASON	ADDITIONAL RULES
SALMON - ENTIRE AREA	July 1-July 15	No min. size. Daily limit 2 (combined). Release CHINOOK, COHO, and CHUM.
	July 16-Aug. 15	CHINOOK - min. size 22". Other SALMON species - no min. size. Daily limit 2 (combined). Only 1 hatchery CHINOOK may be retained. Release COHO, CHUM, and wild CHINOOK. See Hood Canal Closure on previous page. Season may close earlier if CHINOOK quota is attained.
	Nov. 1-Nov. 30	CHINOOK - min. size 22". Other SALMON species - no min. size. Daily limit 2 (combined). Release COHO and wild CHINOOK.
	Jan. 16-Apr. 15	CHINOOK - min. size 22". Other SALMON species - no min. size. Daily limit 2 (combined). Release COHO and wild CHINOOK. Season may close earlier if CHINOOK guideline is attained.
Edmonds Public Fishing Pier	July 1-Aug. 31 & Nov. 1-June 30	CHINOOK - min. size 22". Other SALMON species - no min. size. Daily limit 2 (combined). Only 1 CHINOOK may be retained. Release COHO. Aug. 1-Sept. 30: release CHUM.
TROUT	Nov. 1-June 30	Catch-and-release except up to 2 hatchery STEELHEAD may be retained.
STURGEON	Year-round	Catch-and-release.
MACKEREL	Year-round	No min. size. No daily limit.
HERRING, ANCHOVY, SARDINE, SAND LANCE, and SMELT	Year-round	No min. size. Daily limit 10 lbs., all species combined. All SMELT caught must be kept and count toward the daily limit except CLOSED to Columbia River SMELT (eulachon). For SMELT: Jig gear may be used 7 days a week. Dipnets may be used from 6:00 a.m. until 10:00 p.m. Fridays through Tuesdays.
PACIFIC HALIBUT	Check the WDFW website at wdfw.wa.gov/fishing/creel/halibut or call (360) 902-2700 in April 2017 for information on PACIFIC HALIBUT seasons and regulations. No min. size. Daily limit 1.	

BOTTOMFISH

BOTTOMFISH	SEASON	ADDITIONAL RULES
Year-round season. Daily limit is a total of 15 BOTTOMFISH (see definition page 10) regardless of species, subject to individual limits and seasons shown below. Fishing for BOTTOMFISH prohibited in waters deeper than 120 feet.		
LINGCOD	May 1-June 15 May 21-June 15	Hook and line season. Min. size 26". Max. size 36". Daily limit 1. Spearfishing season. Max. size 36". Daily limit 1.
SURFPERCH	Year-round	No min. size. Daily limit 10. Except SHINER PERCH daily limit 15: not included in BOTTOMFISH limit.
ROCKFISH	CLOSED	CLOSED to fishing for, retaining, or possessing.
PACIFIC COD, POLLOCK, HAKE, and WOLF-EEL	Year-round	CLOSED to retention.
SIXGILL, SEVENGILL, and THRESHER SHARKS	CLOSED	CLOSED to fishing for, retaining, or possessing. SIXGILL SHARK may not be removed from the water.
CABEZON	May 1-Nov. 30	Min. size 18". Daily limit 1.
OTHER FOOD FISH	Year-round	No min. size. Daily limit 2 of each species. See definition page 11.
ALL OTHER FISH	CLOSED	CLOSED to fishing for, retaining, or possessing.

Kelp Greenling (female)

Size: up to 21"

Color: small, reddish-brown to golden spots on a gray to brown body.

Look for: yellowish orange fins.



Kelp Greenling (male)

Size: up to 21"

Color: gray to brownish-olive, with irregular blue spots on the front half of their bodies

Look for: eyelike spot at the end of the soft dorsal fin, just in front of the tail.



Halibut

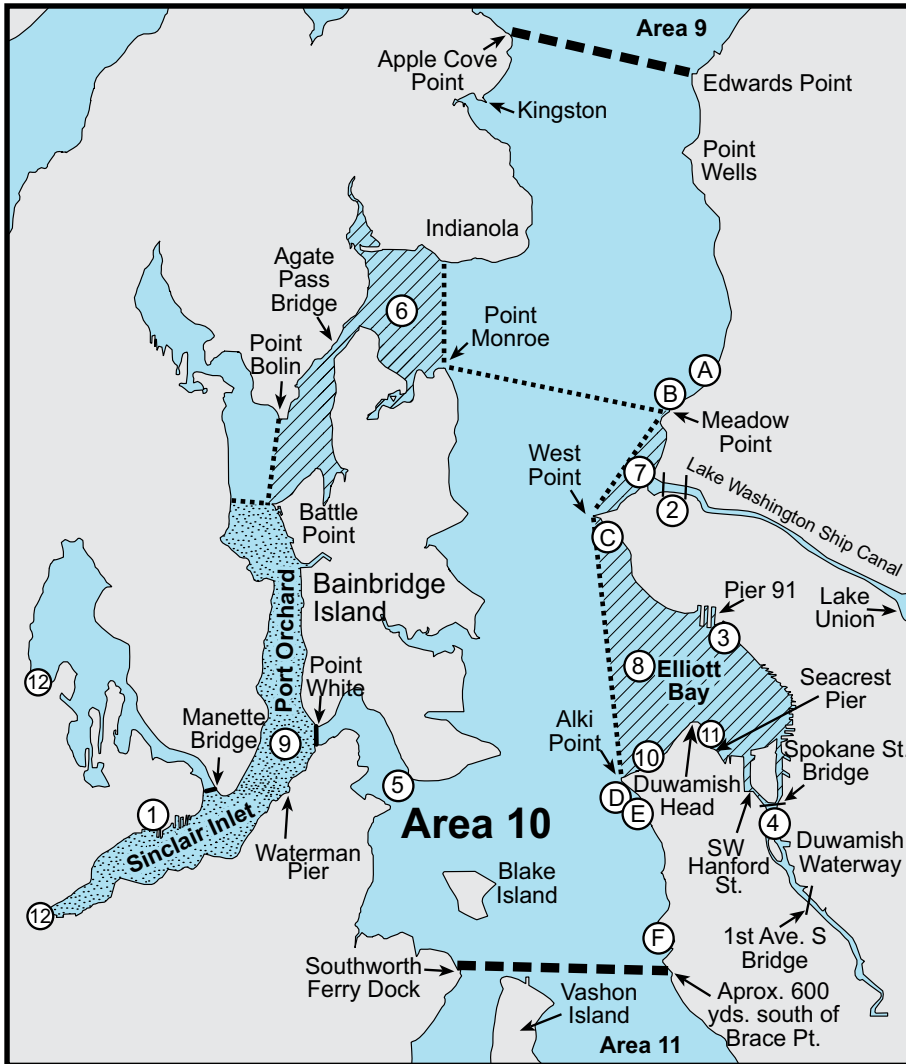
Size: up to 6'

Color: white on one side; brown-gray on the other.

Look for: large mouth and eyes on right side of body. Three points on tail.

Marine Areas

Marine Area 10 Map



Seattle Marine Preserves: Note signs at beach entrances. The area from high tide to minus 4.5' (extreme low water) between the coordinates listed below is CLOSED to harvest except for finfish by hook and line.

- (A) **Carkeek Park Marine Preserve**
122°22.82'W, 47°42.53'N to a sign at 122°22.79'W, 47°42.73'N
AND 200 yards of beach starting 300 yards north of 122°22.79'W, 47°42.73'N
- (B) **Golden Gardens Marine Preserve**
122°24.12'W, 47°41.86'N south to the walkway sign
- (C) **Discovery Park Marine Preserve**
122°25.53'W, 47°39.45'N northeast to the sign at sidewalk
AND 122°25.35'W, 47°40.06'N to a sign posted at 122°25.07'W, 47°40.19'N
- (D) **Richey Viewpoint Marine Preserve**
From the north edge of the park at 122°25.15'W, 47°34.50'N to 122°24.82'W, 47°34.34'N
- (E) **Emma Schmitz Memorial Marine Preserve**
The residential property fence at 122°24.44'W, 47°33.89'N south to SW Oregon St.
- (F) **Lincoln Park Marine Preserve**
The flagpole at 122°24.08'W, 47°31.83'N to the sign posted at 122°23.67'W, 47°31.55'N

See DOH Fish Consumption advisories for Dyes Inlet (Ostrich Bay), Eagle Harbor, King County, Manchester State Park, and Sinclair Inlet, page 16.

- (1) **Puget Sound Naval Shipyard at Bremerton:** All waters within 150' of the pier head line CLOSED to fishing for Food Fish at all times.
- (2) **Chittenden Locks Closure:** Waters between Chittenden Locks and the Burlington-Northern Railroad bridge CLOSED to fishing. It is illegal to fish for Food Fish east of a line which is parallel to the Burlington-Northern Railroad bridge and approximately 175' west of the bridge, and which runs through the wooden piling tower structure near the south shore (west of the Chittenden Locks).
- (3) **Elliott Bay Public Fishing Pier:** Waters within 100 yards of the Elliott Bay Public Fishing Pier CLOSED to fishing for Food Fish and the harvest of SHELLFISH except when fishing from the pier.
- (4) **Duwamish Waterways Special Rules:** a) Downstream of 1st Ave. South Bridge is part of Marine Area 10. Record SALMON caught here as Marine Area 10 on your catch record card. b) July 1-Aug. 15: CLOSED to fishing for SALMON. c) Aug. 16-June 30: same rules as Area 10 - ENTIRE AREA. d) Additional restrictions Sept. 1-Oct. 31: from the 1st Ave. South Bridge downstream to an east-west line through SW Hanford St. on Harbor Island (including waters at the Spokane St. Bridge) - night closure, unlawful to use forage fish jig gear, and anti-snagging rule.
- (5) **Orchard Rocks Conservation Area:** Waters and bedlands of Rich Passage within a 400 yard radius of Orchard Rocks CLOSED to all harvest. Closure does not affect privately owned fish in net pens and the harvest of clams, oysters, and mussels by tideland owners and their families.
- (6) **Agate Pass Area:** Jan. 1-Mar. 31: catch-and-release and fly fishing only in waters west of a line from Point Monroe to Indianola and east of a line from Point Bolin to Battle Point. Lead-core line prohibited.
- (7) **Shilshole Bay Closure:** July 1-Aug. 31: waters of Shilshole Bay southeast of a line from Meadow Point to West Point CLOSED to fishing for SALMON.
- (8) **Elliott Bay Closure:** Waters of Elliott Bay east of a line from West Point to Alki Point CLOSED to salmon fishing July 1-Aug. 31.
- (9) **Sinclair Inlet Fishery:** Waters of Sinclair Inlet and Port Orchard south of the Manette Bridge in Bremerton, south of a line drawn true west from Battle Point, and west of a line drawn true south from Point White - same rules as Marine Area 10 - ENTIRE AREA, except July 1-Sept. 30.
- (10) **Alki Beach Junk Yard (Octopus Protection Area):** CLOSED to the harvest of OCTOPUS.
- (11) **Seacrest Park Coves 1, 2, and 3 (Octopus Protection Area):** CLOSED to the harvest of OCTOPUS.
- (12) **Chico and Gorst Creeks Mouths Closures:** All waters within channels created by exposed tidelands are CLOSED to fishing for SALMON.

Marine Area 10 - Seattle/Bremerton Area

(From the Apple Cove Point-Edwards Point to a line projected true east-west through the north tip of Vashon Island)

SALMON

SPECIES	SEASON	ADDITIONAL RULES
SALMON - ENTIRE AREA	June 1-June 30	Catch-and-release. Open only north of a line from Point Monroe to Meadow Point.
	July 1-July 15	No min. size. Daily limit 2 (combined). Release CHINOOK, COHO, and CHUM. See Duwamish Waterways Special Rules, Shilshole Bay Closure, Elliott Bay Closure, and Sinclair Inlet Fishery on previous page.
	July 16-Aug. 15	CHINOOK - min. size 22". Other SALMON species - no min. size. Daily limit 2 (combined). Only 1 hatchery CHINOOK may be retained. Release COHO, CHUM, and wild CHINOOK. See Duwamish Waterways Special Rules and Sinclair Inlet Fishery on previous page. Season may close earlier if CHINOOK quota is attained.
	Nov. 1-Feb. 28	CHINOOK - min. size 22". Other SALMON species - no min. size. Daily limit 2 (combined). Release COHO and wild CHINOOK. See Agate Pass Area and Duwamish Waterways Special Rules on previous page. Season may close earlier if CHINOOK guideline is attained.
	Sinclair Inlet Fishery (see 9 on previous page for boundaries)	July 1-Sept. 30
Elliott Bay Fishing Pier at Terminal 86 and Seacrest Pier	July 1-Aug. 31 & Nov. 1-June 30	CHINOOK - min. size 22". Other SALMON species - no min. size. Daily limit 2 (combined). Only 1 CHINOOK may be retained. Release COHO. Aug. 1-Sept. 15: release CHUM.
Waterman Pier, Bremerton Boardwalk, and Illahee State Park Pier	Year-round	CHINOOK - min. size 22". Other SALMON species - no min. size. Daily limit 2 (combined). Only 1 CHINOOK may be retained. Release wild COHO. Aug. 1-Sept. 15: release CHUM.
TROUT	Year-round	Catch-and-release except up to 2 hatchery STEELHEAD may be retained.
STURGEON	Year-round	Catch-and-release.
MACKEREL	Year-round	No min. size. No daily limit.
HERRING, ANCHOVY, SARDINE, SAND LANCE, and SMELT	Year-round	No min. size. Daily limit 10 lbs., all species combined. All SMELT caught must be kept and count toward the daily limit except CLOSED to Columbia River SMELT (eulachon). For SMELT: Jig gear may be used 7 days a week. Dipnets may be used from 6:00 a.m. until 10:00 p.m. Fridays through Tuesdays.
PACIFIC HALIBUT	Check the WDFW website at wdfw.wa.gov/fishing/creel/halibut or call (360) 902-2700 in April 2017 for information on PACIFIC HALIBUT seasons and regulations. No min. size. Daily limit 1.	
BOTTOMFISH	Year-round season. Daily limit is a total of 15 BOTTOMFISH (see definition page 10) regardless of species, subject to individual limits and seasons as shown on previous page. See Agate Pass Area on previous page. Fishing for BOTTOMFISH prohibited in waters deeper than 120 feet.	
LINGCOD	May 1-June 15 May 21-June 15	Hook and line season. Min. size 26". Max. size 36". Daily limit 1. Spearfishing season. Max. size 36". Daily limit 1.
SURFPERCH	Year-round	No min. size. Daily limit 10. Except SHINER PERCH daily limit 15: not included in BOTTOMFISH limit.
ROCKFISH	CLOSED	CLOSED to fishing for, retaining, or possessing.
PACIFIC COD, POLLOCK, HAKE, and WOLF-EEL	Year-round	CLOSED to retention.
SIXGILL, SEVENGILL, and THRESHER SHARKS	CLOSED	CLOSED to fishing for, retaining, or possessing. SIXGILL SHARK may not be removed from the water.
CABEZON	May 1-Nov. 30	Min. size 18". Daily limit 1.
OTHER FOOD FISH	Year-round	No min. size. Daily limit 2 of each species. See definition page 11.
ALL OTHER FISH	CLOSED	CLOSED to fishing for, retaining, or possessing.

BOTTOMFISH

Marine Areas

Coho

Jaw- mouth is white and the gum line is almost white, but the tongue may be black. The teeth are sharp and strong.

Tail- has just a few scattered spots, usually on the upper lobe, with silver streaks. It has a wide caudal peduncle.



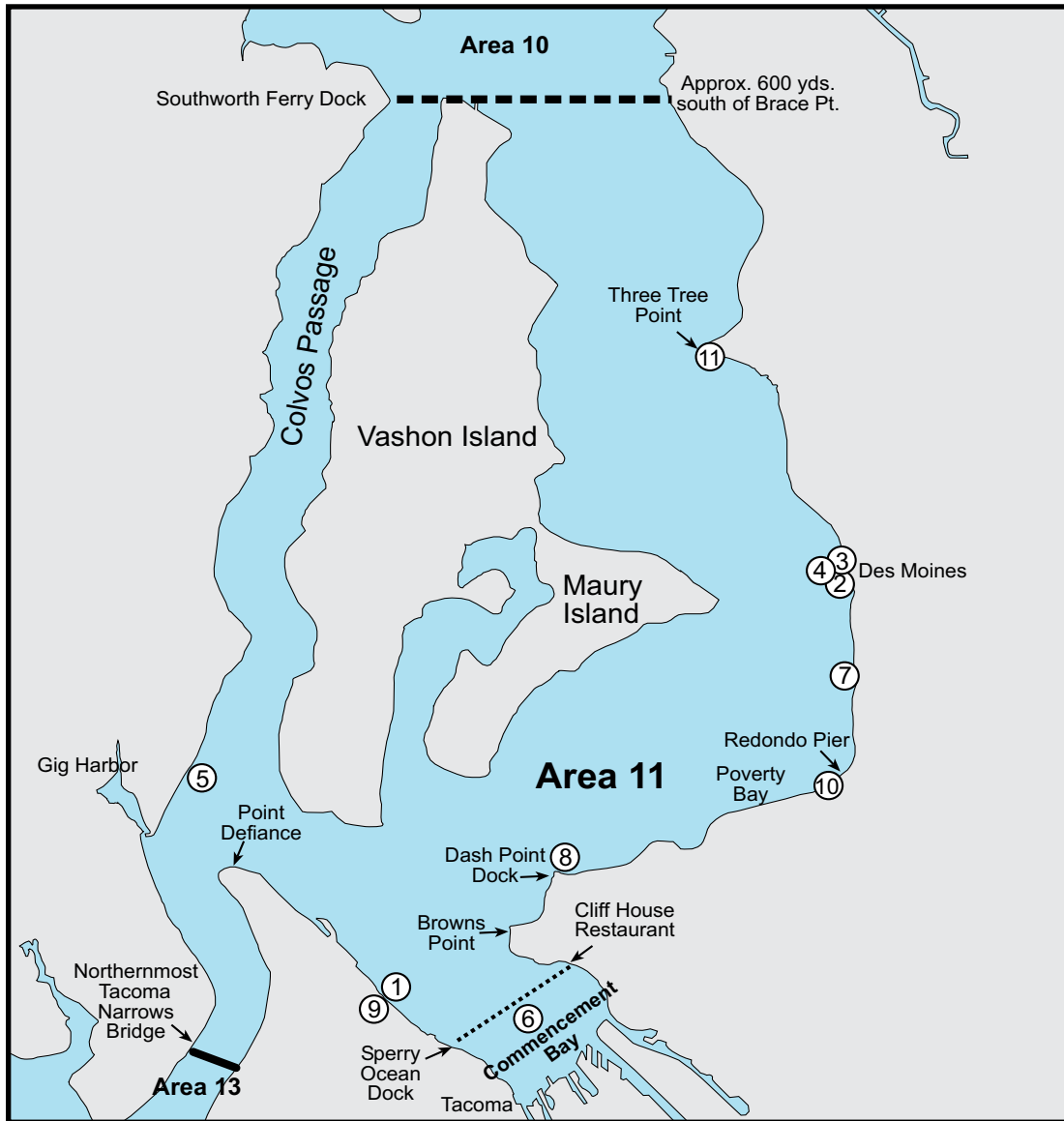
Chinook

Jaw- has a dark mouth and black gums at the base of its teeth. Immature chinook are known as a "blackmouth."

Tail- both the upper and lower lobes of the tail are covered with spots and silver is prominent.



Marine Area 11 Map



- ① **Les Davis Fishing Pier:** Waters within 100 yards of the Les Davis Fishing Pier, CLOSED to fishing for Food Fish and to the harvest of SHELLFISH except when fishing from the pier.
- ② **Des Moines Fishing Pier:** Waters within 100 yards of the Des Moines Public Fishing Pier, CLOSED to fishing for Food Fish and to the harvest of SHELLFISH except when fishing from the pier.
- ③ **City of Des Moines Park Conservation Area:** CLOSED to all harvest.
- ④ **South 239th Street Park Conservation Area:** CLOSED to all harvest.
- ⑤ **Colvos Passage Marine Preserve:** Area enclosed by a line starting at extreme low water 300' SW of the southern boundary of Sunrise County Park, Pierce Co. (latitude 47°20.9'N) due east 300', then southwesterly paralleling the shoreline for 500', then west to the extreme low water line, then northeasterly along extreme low water line to point of origin, CLOSED to all harvest, except SALMON trolling allowed.
- ⑥ **Commencement Bay Closure:** Waters east of a line bearing 215° true (195°30' magnetic) from the Cliff House Restaurant on north shore (approximate position 47°17.85'N, 122°25.90'W) through Sperry Ocean Dock (approximate position 47°16.43'N, 122°27.37'W) - Apr. 1- Apr. 30, and June 1-July 31: CLOSED to fishing for SALMON. Aug. 1-Mar. 31 and May 1-May 31: same rules as Marine Area 11 - ENTIRE AREA. See Department of Health (DOH) Fish Consumption Advisory on page 16.
- ⑦ **Saltwater State Park Marine Preserve:** Those waters, bedlands, and tidelands of Saltwater State Park within a line projected from the northernmost marker at the DNR high tide line through 122°19.65'W, 47°22.42'N; then to 122°19.74'W, 47°22.44'N; then to 122°19.77'W, 47°22.36'N, then to 122°19.68'W, 47°22.34'N; then to the southernmost marker on the shoreline and back along the high tide line to the northernmost marker, CLOSED to all harvest.
- ⑧ **Dash Point Dock:** Waters within 100 yards of the Dash Point Dock, CLOSED to fishing for Food Fish and to the harvest of SHELLFISH except when fishing from the pier.
- ⑨ **Les Davis (Octopus Protection Area):** CLOSED to the harvest of OCTOPUS.
- ⑩ **Redondo Beach (Octopus Protection Area):** CLOSED to the harvest of OCTOPUS.
- ⑪ **Three Tree Point (Octopus Protection Area):** CLOSED to the harvest of OCTOPUS.

Marine Area 11 - Tacoma-Vashon Island

(From the north tip of Vashon Island to the Northernmost Tacoma Narrows Bridge)

SALMON

SPECIES	SEASON	ADDITIONAL RULES
SALMON - ENTIRE AREA	June 1-Aug. 31	CHINOOK - min. size 22". Other SALMON species - no min. size. Daily limit 2 (combined). Release COHO and wild CHINOOK. See Commencement Bay Closure on previous page. Season may close earlier if CHINOOK guideline is attained.
	Feb. 1-Apr. 30	CHINOOK - min. size 22". Other SALMON species - no min. size. Daily limit 2 (combined). Release COHO and wild CHINOOK. See Commencement Bay closure on previous page. Season may close earlier if CHINOOK guideline is attained.
Dash Point Dock, Les Davis Pier, Des Moines Pier, Redondo Pier, Point Defiance Boathouse Dock	July 1-Aug. 31 & Nov. 1-June 30	CHINOOK - min. size 22". Other SALMON species - no min. size. Daily limit 2 (combined). Only 1 CHINOOK may be retained. Release COHO.
TROUT	Year-round	Catch-and-release except up to 2 hatchery STEELHEAD may be retained.
STURGEON	Year-round	Catch-and-release.
MACKEREL	Year-round	No min. size. No daily limit.
HERRING, ANCHOVY, SARDINE, SAND LANCE, and SMELT	Year-round	No min. size. Daily limit 10 lbs., all species combined. All SMELT caught must be kept and count toward the daily limit except CLOSED to Columbia River SMELT (eulachon). For SMELT: Jig gear may be used 7 days a week. Dipnets may be used from 6:00 a.m. until 10:00 p.m. Fridays through Tuesdays.
PACIFIC HALIBUT	CLOSED	CLOSED to fishing for, retaining, or possessing.

BOTTOMFISH

BOTTOMFISH	Year-round season. Daily limit is a total of 15 BOTTOMFISH (see definition page 10) regardless of species, subject to individual limits and seasons shown below. Fishing for BOTTOMFISH prohibited in waters deeper than 120 feet.	
LINGCOD	May 1-June 15 May 21-June 15	Hook and line season. Min. size 26". Max. size 36". Daily limit 1. Spearfishing season. Max. size 36". Daily limit 1.
SURFPERCH	Year-round	No min. size. Daily limit 10. Except SHINER PERCH daily limit 15: not included in BOTTOMFISH limit.
ROCKFISH	CLOSED	CLOSED to fishing for, retaining, or possessing.
PACIFIC COD, POLLOCK, HAKE, and WOLF-EEL	Year-round	CLOSED to retention.
SIXGILL, SEVENGILL, and THRESHER SHARKS	CLOSED	CLOSED to fishing for, retaining, or possessing. SIXGILL SHARK may not be removed from the water.
CABEZON	May 1-Nov. 30	Min. size 18". Daily limit 1.
OTHER FOOD FISH	Year-round	No min. size. Daily limit 2 of each species. See definition page 11.
ALL OTHER FISH	CLOSED	CLOSED to fishing for, retaining, or possessing.

Derelict Fishing Gear

Report lost or abandoned commercial nets or pots

There are no penalties associated with reporting lost commercial fishing gear.

The Derelict Fishing Gear Removal Project is a no-fault program. The goals are simply to remove lost and abandoned commercial gear, to help restore Puget Sound, to improve public safety, and to assist species recovery.

Nets are dangerous! Never attempt to remove them. Divers, stay a safe distance away.



Still Fishing After All These Years

Lost and abandoned commercial fishing gear continues to fish, impacting marine animals and destroying their habitat, entangling divers, and damaging propellers and rudders of boats.

What's being done?

Federal, state, tribal, and local governments, NGOs, and grassroots organizations and individuals are collaborating to protect and restore Washington marine resources by locating and removing harmful commercial derelict fishing gear.

How can you help?

Record as much information as you can when you find commercial derelict gear, including:

- Date of sighting
- Type of gear
- Approximate water depth
- General location
- Latitude (example 48.34333)
- Longitude (example -123.00333)

You can report this information to:

Washington Department of Fish and Wildlife
(Toll Free) 855-542-3935 or go to
<http://wdfw.wa.gov/fishing/derelict>



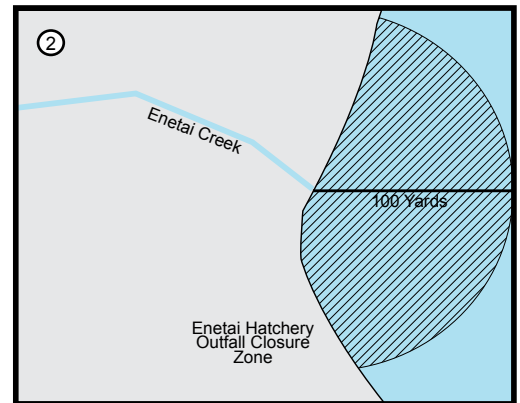
Northwest Straits Marine Conservative Initiative
360-733-1725 or go to
www.derelictgear.org



NORTHWEST STRAITS
marine conservation initiative

Marine Areas

Marine Area 12 Map



- ① **Sund Rock Conservation Area:** Waters, tidelands, and bedlands enclosed by a line originating at the shore of Hood Canal, at the mouth of Sund Creek (47°26.4'N, 123°7.1'W), then due east to 123°6.9'W, then due south to 47°26', then due west until it intersects the beach, then north along the ordinary high water line to the point of origin, including all of the underwater feature known as Sund Rock, CLOSED to all harvest, except tideland owners and their families may still harvest CLAMS, OYSTERS, and MUSSELS from their property.
- ② **Enetai Hatchery Outfall Closure:** Waters within 100 yards of the Enetai Hatchery outfall CLOSED year-round to fishing for Food Fish.
- ③ **Big Beef Closure:** Aug. 1-Nov. 30: Waters within 100' of the Seabeck Hwy. NW Big Beef Creek Bridge CLOSED to fishing for Food Fish.
- ④ **Dewatto, Dosewallips, Duckabush, Hamma Hamma, and Skokomish Mouth Closures:** July 1-Sept. 30: All waters within channels created by exposed tidelands are CLOSED to fishing for finfish.
- ⑤ **Octopus Hole Conservation Area:** Waters, tidelands, and bedlands of Hood Canal from ordinary highwater to 200 yards due east in an area starting at latitude 47°26.67'N (the first bulkhead south of the sign for Octopus Hole) and extending north 1/3 of a mile to 47°27.02'N are CLOSED to harvest, except tideland owners and their families may still harvest CLAMS, OYSTERS, and MUSSELS from their property.
- ⑥ **Waketickoh Creek Conservation Area:** Waters and bedlands from Waketickoh Creek (located 1,000 yards NE of Cummings Pt.) out perpendicular to shore 500 yards, then parallel to shore northeast 1,700 yards, then back to shore along a line perpendicular to shore, excluding the area within 100' of ordinary high water - CLOSED to all harvest.
- ⑦ **Tarboo Bay Closure:** Waters north of Broad Spit (northern Dabob Bay) CLOSED to SALMON fishing Sept. 16-Dec. 31.

Marine Area 12 - Hood Canal

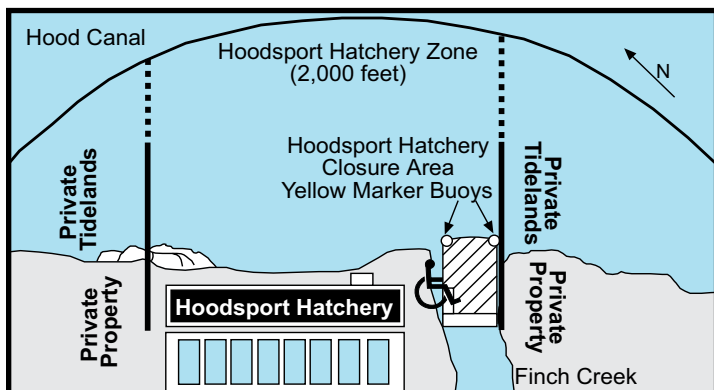
(All waters south of the Hood Canal Bridge)

SALMON

SPECIES	SEASON	ADDITIONAL RULES
SALMON	Aug. 16-Sept. 30	No min. size. Daily limit 4 (combined). Release CHINOOK and CHUM. See Tarboo Bay and Mouth Closures on previous page.
North of Ayock Point		
South of Ayock Point	July 1-Sept. 30	CHINOOK - min. size 20". Other SALMON species - no min. size. Daily limit 4 (combined). Release CHUM and wild CHINOOK. See Mouth Closures on previous page. Anglers may fish with two poles with Two-Pole Endorsement.
ENTIRE AREA	Oct. 1-Dec. 31	CHINOOK - min. size 22". Other SALMON species - no min. size. Daily limit 4 (combined). Up to 2 CHINOOK may be retained. Release wild CHINOOK. Oct. 1-Oct. 15: release CHUM. See Tarboo Bay Closure on previous page. Oct. 1-Oct. 31: south of Ayock Point Anglers may fish with two poles with Two-Pole Endorsement.
	Jan. 1-Apr. 30	CHINOOK - min. size 22". Other SALMON species - no min. size. Daily limit 2 (combined). Release wild CHINOOK.
Hoodsport Hatchery Zone (see below for boundaries)	July 1-Dec. 31	No min. size. Daily limit 4 (combined). Release wild CHINOOK. Night closure. July 1-Oct. 15: release CHUM. Please respect private property adjacent to hatchery (see map and description below).
TROUT	Year-round	Catch-and-release except up to 2 hatchery STEELHEAD may be retained.
STURGEON	Year-round	Catch-and-release.
MACKEREL	CLOSED	CLOSED to fishing for, retaining, or possessing.
HERRING, ANCHOVY, SARDINE, SAND LANCE, and SMELT	CLOSED	CLOSED to fishing for, retaining, or possessing.
PACIFIC HALIBUT	CLOSED	CLOSED to fishing for, retaining, or possessing.

BOTTOMFISH

BOTTOMFISH	(see definition page 10).	
FLOUNDERS, SOLE, and SANDDABS	Year-round	Open north of a true east line from the mouth of Turner Creek to the Toandos Peninsula in waters shallower than 120 feet (20 fathoms). Daily limit is a total of 15. See map on previous page.
LINGCOD	CLOSED	CLOSED to fishing for, retaining, or possessing.
SURFPERCH	CLOSED	CLOSED to fishing for, retaining, or possessing.
ROCKFISH	CLOSED	CLOSED to fishing for, retaining, or possessing.
PACIFIC COD, POLLOCK, HAKE, and WOLF-EEL	CLOSED	CLOSED to fishing for, retaining, or possessing.
SIXGILL, SEVENGILL, and THRESHER SHARKS	CLOSED	Closed to fishing for, retaining, or possessing. SIXGILL SHARK may not be removed from the water.
CABEZON	CLOSED	CLOSED to fishing for, retaining, or possessing.
OTHER FOOD FISH	CLOSED	CLOSED to fishing for, retaining, or possessing.
ALL OTHER FISH	CLOSED	CLOSED to fishing for, retaining, or possessing.



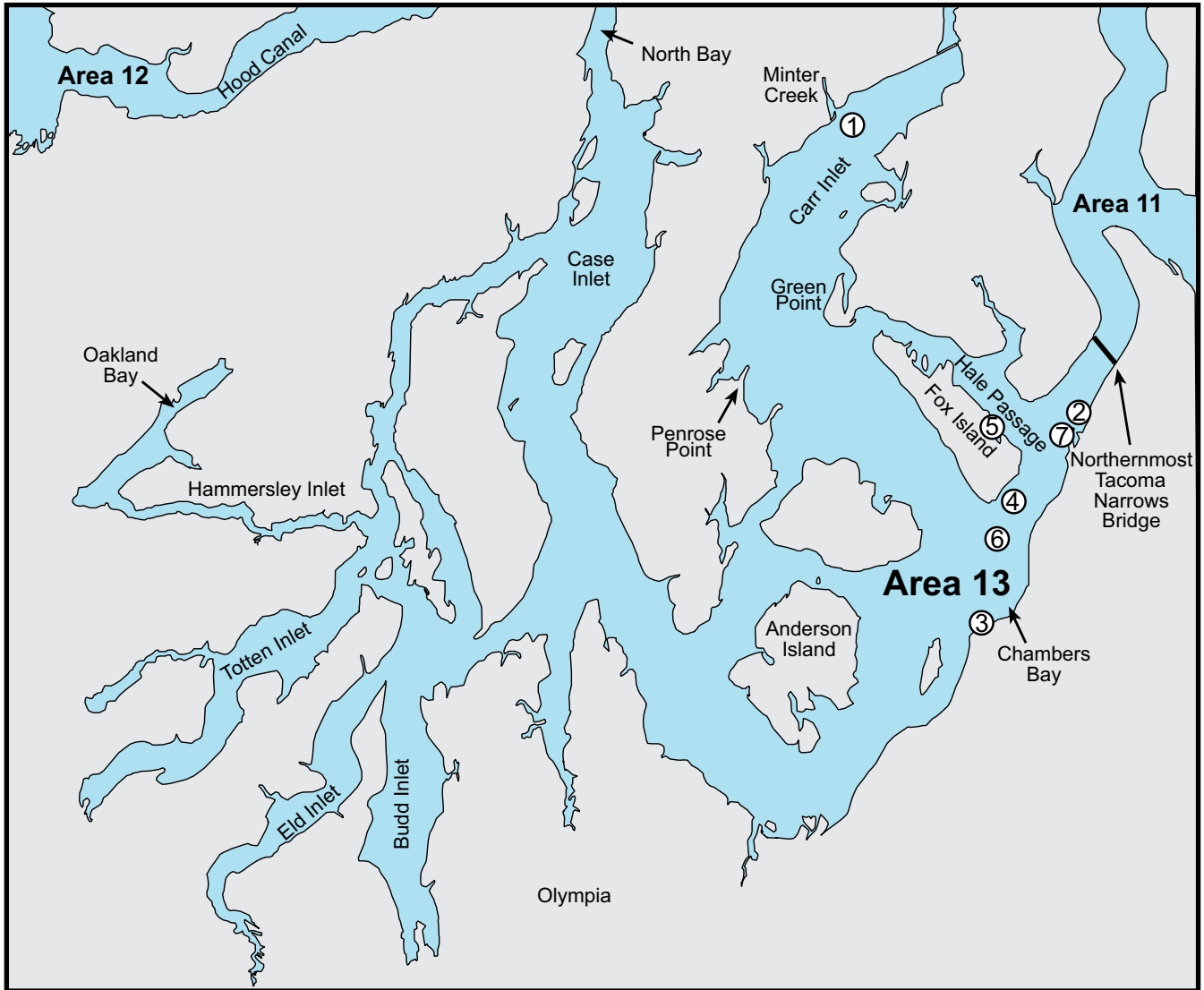
Hoodsport Hatchery Zone: Waters within a 2,000' arc seaward of the yellow marker buoys at the mouth of Finch Creek, Jan. 1-June 30: same rules as Area 12 - ENTIRE AREA; July 1-Dec. 31: see Hoodsport Hatchery Zone above for rules. **Visitors, please be aware that walking or wading onto private property or tidelands adjacent to the hatchery without permission is considered criminal trespass and will be enforced. Please stay within the state-owned tidelands in front of the hatchery complex. The north and south boundaries are clearly marked by signs and floating buoys for your benefit. Closure of these waters may occur if trespassing continues.**

Hoodsport Hatchery Closure: All waters between 2 yellow buoys at the mouth of Finch Creek and the hatchery weir (walkway); and all waters within the channel created by Finch Creek on exposed tidelands, and fishing from any part of the Hoodsport Hatchery structure, CLOSED to fishing year-round, except persons with disabilities who permanently use a wheelchair AND who have a designated harvester companion card may fish from the ADA-accessible site at the Hoodsport Salmon Hatchery, provided such persons follow all applicable rules and regulations of the adjoining waters of Marine Area 12.

Hood Canal Shrimp District: All waters of Hood Canal south of the Hood Canal floating bridge.

Marine Areas

Marine Area 13 Map



- ① **Minter Creek Closure:** Apr. 16-Aug. 31: waters at Minter Creek mouth within 1,000' of outer oyster stakes CLOSED to fishing for SALMON.
- ② **Titlow Beach Marine Preserve:** All waters due west from the southern end of the Tacoma Outboard Association building near the boat launch ramp to the outer harbor line, then south following the outer harbor line to a line due west from the old ferry landing dock at the 6th Ave. Extension, then following the line to the high water line, then to the point of origin, CLOSED to the harvesting of FISH, SHELLFISH, and WILDLIFE, except SALMON fishing, using lures only, is permitted from shore or non-motorized craft.
- ③ **Saltar's Point Conservation Area:** Tidelands owned by the town of Steilacoom at Saltar's Point Beach located between Montgomery Street and Martin Street, and the water column above these tidelands, CLOSED to all harvest.
- ④ **Fox Island Public Fishing Pier**
- ⑤ **Z's Reef Marine Preserve:** Waters and bedlands beginning at the extreme low water line on the northeast side of Fox Island at 47°14.56'N, 122°35.98'W, then 0.5 nautical mile westerly along the extreme low water line to 47°14.96'N, 122°36.37'W, then northeast to the 85' contour line, southeast along 85' contour, then southeast along the 85' depth contour to a point on a due northeast-southwest line through the point of origin, then southwest to the point of origin, CLOSED to all harvest, except for fly fishing for SALMON allowed.
- ⑥ **Toliva Shoal Closure:** June 16-Apr. 30: closed to fishing for fin fish in waters within 500 yards of the buoy on Toliva Shoal. May 1-June 15: same rules as Marine Area 13 - ENTIRE AREA.
- ⑦ **Days Island (Octopus Protection Area):** CLOSED to the harvest of OCTOPUS.

Marine Area 13 - South Puget Sound

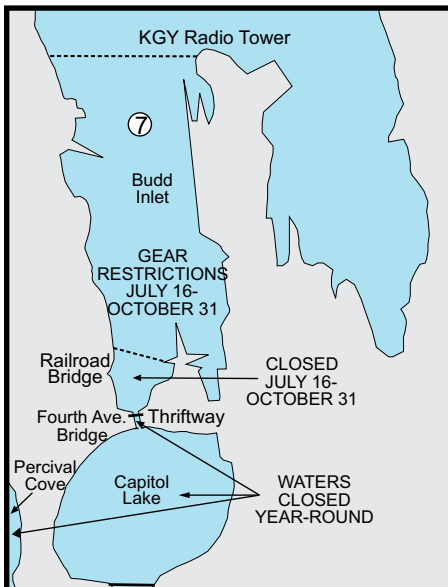
(All waters south of northernmost Tacoma Narrows Bridge)

SALMON

SPECIES	SEASON	ADDITIONAL RULES
SALMON - ENTIRE AREA	July 1-Aug. 31 & Oct. 1-June 30	CHINOOK - min. size 22". Other SALMON species - no min. size. Daily limit 2 (combined). Release COHO and wild CHINOOK.. See closures and marine preserves on previous page and below. Anglers may fish with two poles with Two-Pole Endorsement .
Fox Island Public Fishing Pier	July 1-Aug. 31 & Nov. 1-June 30	CHINOOK - min. size 22". Other SALMON species - no min. size. Daily limit 2 (combined). Only 1 CHINOOK may be retained. Release COHO.
TROUT	Year-round	Catch-and-release except up to 2 hatchery STEELHEAD may be retained.
STURGEON	Year-round	Catch-and-release.
MACKEREL	Year-round	No min. size. No daily limit.
HERRING, ANCHOVY, SARDINE, SAND LANCE, and SMELT	Year-round	No min. size. Daily limit 10 lbs., all species combined. All SMELT caught must be kept and count toward the daily limit except CLOSED to Columbia River SMELT (eulachon). For SMELT: Jig gear may be used 7 days a week. Dipnets may be used from 6:00 a.m. until 10:00 p.m. Fridays through Tuesdays.
PACIFIC HALIBUT	CLOSED	CLOSED to fishing for, retaining, or possessing.

BOTTOMFISH

BOTTOMFISH		
Year-round season. Daily limit is a total of 15 BOTTOMFISH (see definition page 10) regardless of species, subject to individual limits and seasons shown below. See closures and marine preserves on previous page and below. Fishing for BOTTOMFISH prohibited in waters deeper than 120 feet.		
LINGCOD	May 1-June 15 May 21-June 15	Hook and line season. Min. size 26". Max. size 36". Daily limit 1. Spearfishing season. Max. size 36". Daily limit 1.
SURFPERCH	Year-round	No min. size. Daily limit 10. Except SHINER PERCH daily limit 15: not included in BOTTOMFISH limit.
ROCKFISH	CLOSED	CLOSED to fishing for, retaining, or possessing.
PACIFIC COD, POLLOCK, HAKE, and WOLF-EEL	Year-round	CLOSED to retention.
SIXGILL, SEVENGILL, and THRESHER SHARKS	CLOSED	CLOSED to fishing for, retaining, or possessing. SIXGILL SHARK may not be removed from the water.
CABEZON	May 1-Nov. 30	Min. size 18". Daily limit 1.
OTHER FOOD FISH	Year-round	No min. size. Daily limit 2 of each species. See definition page 11.
ALL OTHER FISH	CLOSED	CLOSED to fishing for, retaining, or possessing.



⑦ **Budd Inlet Closure:** waters of Budd Inlet at Olympia south of the Fourth Ave. Bridge are CLOSED to fishing year-round; July 16-Oct. 31: all contiguous waters between the Fourth Ave. Bridge and a line from the northwest corner of the Thriftway Market building to a point 100 yards north of the railroad bridge located on the western side of the inlet CLOSED to fishing for SALMON and BOTTOMFISH.

July 16-Oct. 31: night closure and anti-snagging rule in effect in waters of Budd Inlet south of a line projected true west from the KGY Radio Station Tower to the western shore of the inlet and north of a line from the northwest corner of the Thriftway Market building to a point 100 yards north of the railroad bridge located on the western side of the inlet.

See Department of Health (DOH) Fish Consumption Advisories on page 16.

COASTAL CUTTHROAT TROUT - catch-and-release ONLY in all marine waters.

Body color is variable. Numerous closely grouped spots on dorsal fin and tail. The maxillary (upper jaw bone) usually extends beyond the back of the eye. May have a red or orange slash on the underside of the jaw.



Marine Areas

SIXGILL SHARK

Size: up to 15'
Color: dark brown or gray.
Look for: one fin on back situated towards tail.
Six gill slits on each side of head.



SIXGILL SHARK - May not be removed from the water.

PROTECT WASHINGTON'S ROCKFISH

Rockfish are an incredibly diverse and important group of marine fish in our Pacific waters. A number of species are in low abundance in both Puget Sound and the Washington coast. To aid their recovery, fisheries in these areas have ended or been restricted. Read on to learn how you can help conserve Washington's rockfish.

See the WDFW web page for more information:
<http://wdfw.wa.gov/fishing/bottomfish/rockfish/mortality.html>



SEND THAT FISH DOWN

As fish are brought to the surface, gases in the swim bladder expand causing the stomach and eyes to bulge. This is known as **barotrauma**.



Notice the everted stomach and bulging eyes.



Sending fish with barotrauma to their caught depth recompresses them, improving their ability to stay down. There are several devices that you can use:



DEPTH PRESSURE RELEASE

These devices grasp the fish on the jaw and release automatically once your desired depth is reached.



INVERTED HOOK

An inverted barbless hook is inserted in the lower lip. Once back to depth, release the fish with a sharp jerk on the line.



BOTTOM CONTACT RELEASE

A weight secures the grip as the fish descends. Once the weight contacts the sea floor, it releases the fish.



DO NOT VENT

Puncturing the fish's swim bladder or bulging organs is not recommended as it can cause serious injury or introduce infection.

IDENTIFY AND REPORT

CANARY
 3 orange stripes across head. Lateral line in clear gray zone & orange mottling.



YELLOWEYE
 Brilliant yellow eye & raspy ridges above eye. Fins usually have black edges.



BOCACCIO



Lower jaw greatly projecting & elongated body.

VERMILION



Reddish & mottled with gray.

Rockfish can be challenging to identify. Anglers are encouraged to learn key features and use picture references to aid identification. **Accurately identify and report all caught & released rockfish.** Data from recreational anglers are critical to scientific evaluations that determine population health. Report all rockfish caught and released to WDFW port samplers. **Support rockfish conservation.** Be an informed angler; support the continued survival of rockfish by knowing how to properly identify, report, and, if necessary, release these species.

tips

- **Protect sensitive species by avoiding them-** if you are fishing in an area where you are catching fish you can't keep, it's best to move to another location.
- **Get the rockfish down quickly-** have your descending device ready to use. **Fish returned to depth within 2 minutes have a much better chance of survival.**

- **Avoid rough handling-** avoid dropping fish; touch fish as little as possible. Use a wet towel or wet your hands to avoid removing the protective slime coat.
- **Return fish back to the depth of capture or at least 60 feet.**
- **Use the descending device that works for you-** consider the fishing location, depth, and type of boat you have.