



State of Washington

DEPARTMENT OF FISH AND WILDLIFE

Mailing Address: 600 Capitol Way N - Olympia, Washington 98501-1091 - (360) 902-2200, TDD (360) 902-2207
Main Office location: Natural Resources Building - 1111 Washington Street SE - Olympia, WA

DETERMINATION OF NONSIGNIFICANCE (DNS)

Name of Proposal: TEMPORARY COHO SALMON ACCLIMATION ON SOUTH FORK COWICHE CREEK

Description of Proposal: Mobile acclimation units are possibly the key to coho recovery efforts in the Yakima Basin. Using these small mobile units, the Yakama Nation Fisheries will be able to fully acclimate up to 10,000 coho salmon for release in specific tributaries. These units are part of the phase II coho project funded by BPA. Eventually, acclimation will be planned for tributaries that offer the best chance and coho salmon recovery. We propose testing Cowiche Creek in 2008-2011. If successful these units may be used to recover individual tributaries in the Upper Yakima River and Naches Basins.

During the fall of 2008 the YKFP Coho feasibility project intends to finish construction of 2 mobile acclimation units (MAU). These units will be placed on WDFW land managed by Oak Creek Wildlife Area on South Fork Cowiche Creek. Each tank is approximately 20' long 5' wide and 4' deep (Figure 1). The tanks will be placed parallel with the creek as close as logistically possible. A temporary water right for 120 gpm from February 1st to April 1st will be applied for through Department of Ecology. When in operation, each tank will use approximately, 60 gpm and acclimated between 5,000 and 10,000 (depending on size) coho smolts for 4 to 8 weeks.

Before operation can begin, power must be brought across from private land onto WDFW lands. The power will be metered and owned by WDFW. Once power is brought across onto WDFW lands, a secondary pole will be brought off to power the pump. The pump will be 3 horse power centrifugal pump that will pull water from the creek and into the raceways. The raceways will be plumbed so that there exits tie together and exit back into the creek directly downstream of the water intake. In addition to the pump, a backup generator will be placed on site for emergencies.

The proposed site is a disturbed area outside the active flood plain. The tanks will be positioned parallel to the river and they will sit on a small gravel pad (Figure 2). Additionally, water quality measurements will be taken above the intake, in the raceways, and 100 meters below the exit, this will be done to comply with concerns by the Department of Ecology.

Proponent/Applicant:

Washington Department of Fish and Wildlife and
Yakama Nation Fisheries, YKFP project

John McGowan, Oak Creek Wildlife Area Manager

16601 Highway 12

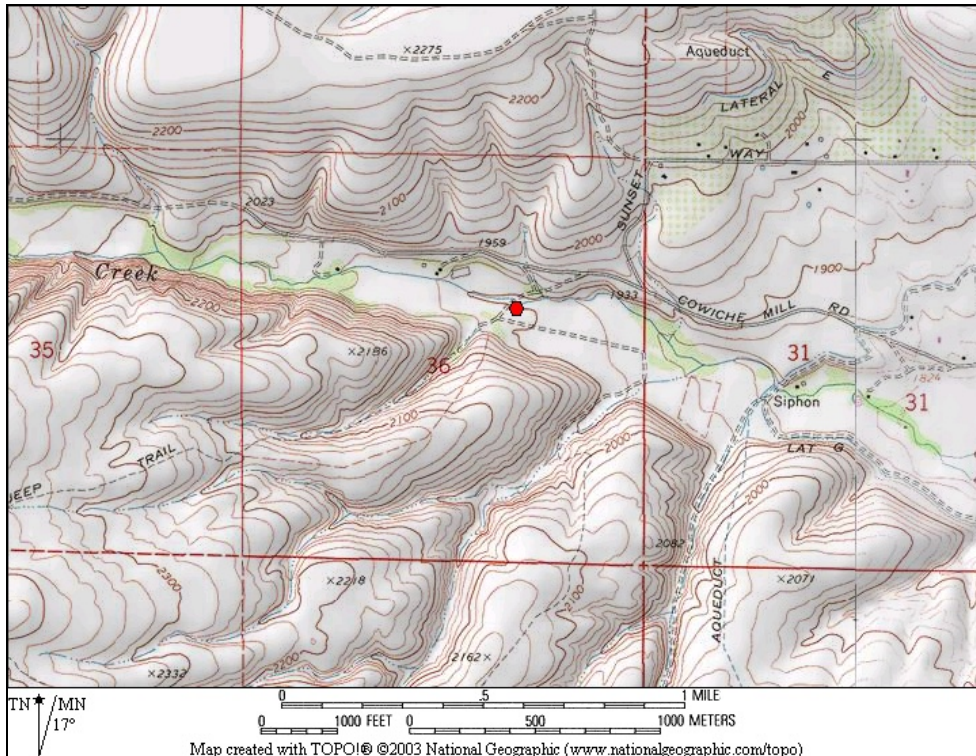
Naches, WA 98937

(509) 653-2390

Location of Proposal, including street, if any:

Cowiche Creek Wildlife Area, Cowiche Mill Road

- Approximately 10 miles west of Yakima, Yakima County
- Township 14 N, Range 16 E, Section 36 NE ¼ SW ¼ (Figure 3)
- Parcel # 16143613403
- 46.66° W; 120.77° W
- WRIA 38, South Fork Cowiche Creek



Lead Agency: Washington Department of Fish and Wildlife (WDFW)

WDFW has determined that this proposal likely will not have a significant adverse impact on the environment. Therefore, state law¹ does not require an environmental impact statement (EIS). WDFW made this determination of nonsignificance (DNS) after we reviewed the environmental checklist and other information on file with us. If you want to review this information, please contact WDFW at the address below.

Agencies, affected tribes, and members of the public are invited to comment on this proposal.

We issued this DNS according to state rules.² We will **not act on this proposal for 14 days** from the date we issued the DNS. If you have comments about this DNS or the proposal, you must send your comments to us so that we receive them within 14 days. This means we must receive your comments by **October 2, 2008**.

When you send us your comments, please provide the name of proposal in your comment letter, and mail the letter to:

Responsible Official: Teresa A. Eturaspe

Position/Title: SEPA/NEPA Coordinator, WDFW Regulatory Services Section

Address: 600 Capitol Way North, Olympia, WA 98501

You can also send your comments via email to SEPAdesk@dfw.wa.gov, or via fax to (360) 902-2946.

If you have questions about this DNS or the details of the proposal, contact Teresa Eturaspe at the address, e-mail, or fax number above; you can also call her at (360) 902-2575.

DATE OF ISSUE: September 18, 2008

SIGNATURE:

Teresa A. Curayce

Footnotes

1. RCW 43.21C.030(2)(c)
2. WAC 197-11-340(2).

SEPA Log Number: 08 -067. dns

Distribution of Environmental Document:

Department of Ecology, Environmental Review Section, Olympia
Department of Natural Resources, SEPA Center, Olympia
U.S. Fish and Wildlife Service, Upper Columbia River Basin Field Office, Spokane
U.S. Army Corps of Engineers, Seattle
NOAA - Fisheries, Seattle
Dept of Archaeology and Historic Preservation
Yakima County Planning Department, Yakima
Yakama Nation, Toppenish
Columbia River Inter-Tribal Fisheries Commission, Portland, OR
Department of Transportation, So. Central Region, Yakima
State Parks and Recreation Commission, Olympia
WDFW, Habitat Program, Region 3, Yakima
WDFW, Fish Program, Region 3, Yakima
WDFW, Wildlife Program, Region 3, Yakima