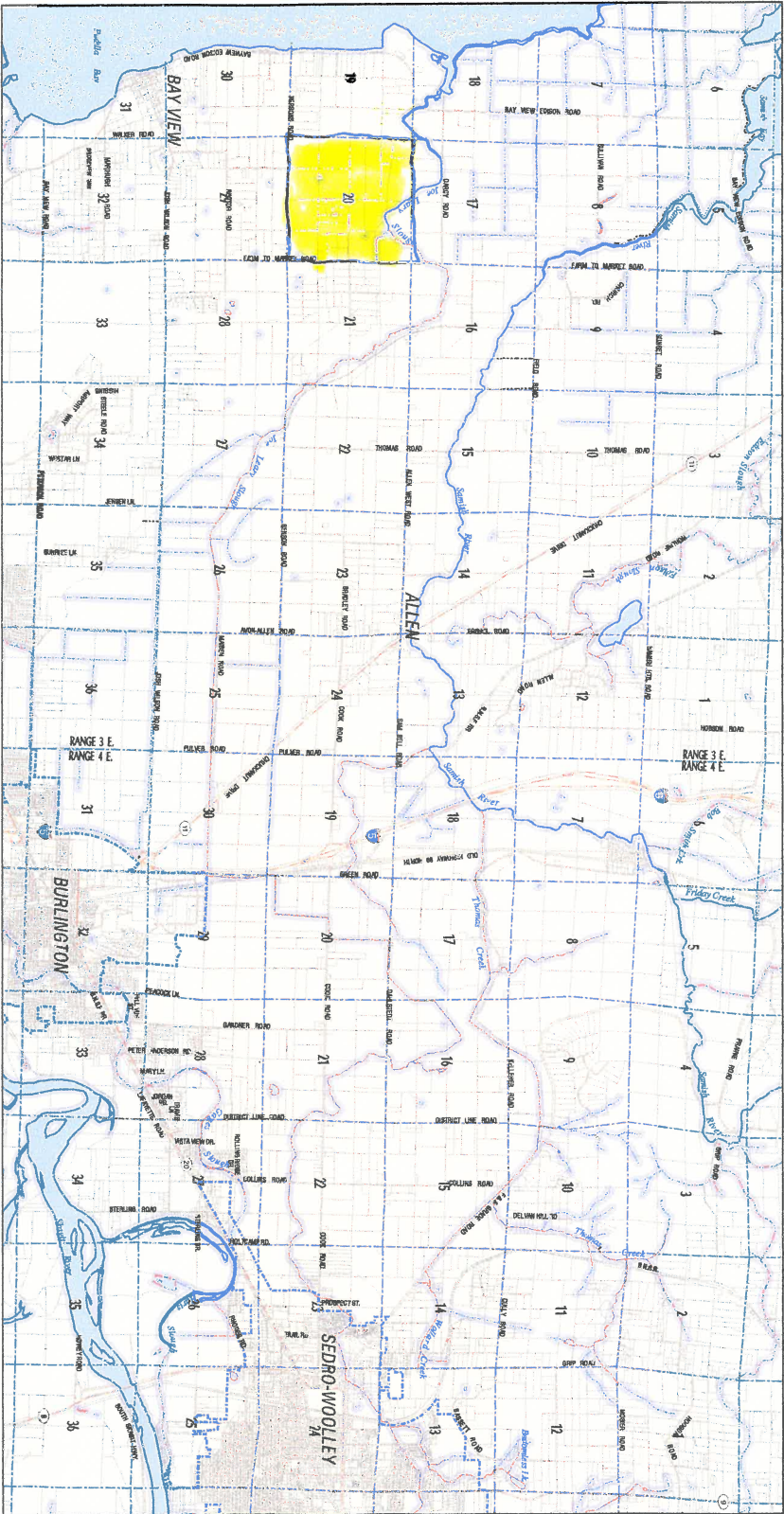


SKAGIT COUNTY DNR (WC) Hydrography February 1, 2009

LEGEND

- D.N.R. Fish Habitat Water Type Code**
- Designated Hydrograph of the State as defined in WAC 220-14-050
 - Fish Habitat as defined in WAC 220-14-050 (1)
 - Water Type Code (1) as defined in WAC 220-14-050 (1)
 - Water Type Code (2) as defined in WAC 220-14-050 (1)
 - Water Type Code (3) as defined in WAC 220-14-050 (1)
 - Water Type Code (4) as defined in WAC 220-14-050 (1)
 - Water Type Code (5) as defined in WAC 220-14-050 (1)
 - Water Type Code (6) as defined in WAC 220-14-050 (1)
 - Water Type Code (7) as defined in WAC 220-14-050 (1)
 - Water Type Code (8) as defined in WAC 220-14-050 (1)
 - Water Type Code (9) as defined in WAC 220-14-050 (1)
 - Water Type Code (10) as defined in WAC 220-14-050 (1)
 - Water Type Code (11) as defined in WAC 220-14-050 (1)
 - Water Type Code (12) as defined in WAC 220-14-050 (1)
 - Water Type Code (13) as defined in WAC 220-14-050 (1)
 - Water Type Code (14) as defined in WAC 220-14-050 (1)
 - Water Type Code (15) as defined in WAC 220-14-050 (1)
 - Water Type Code (16) as defined in WAC 220-14-050 (1)
 - Water Type Code (17) as defined in WAC 220-14-050 (1)
 - Water Type Code (18) as defined in WAC 220-14-050 (1)
 - Water Type Code (19) as defined in WAC 220-14-050 (1)
 - Water Type Code (20) as defined in WAC 220-14-050 (1)
 - Water Type Code (21) as defined in WAC 220-14-050 (1)
 - Water Type Code (22) as defined in WAC 220-14-050 (1)
 - Water Type Code (23) as defined in WAC 220-14-050 (1)
 - Water Type Code (24) as defined in WAC 220-14-050 (1)
 - Water Type Code (25) as defined in WAC 220-14-050 (1)
 - Water Type Code (26) as defined in WAC 220-14-050 (1)
 - Water Type Code (27) as defined in WAC 220-14-050 (1)
 - Water Type Code (28) as defined in WAC 220-14-050 (1)
 - Water Type Code (29) as defined in WAC 220-14-050 (1)
 - Water Type Code (30) as defined in WAC 220-14-050 (1)
 - Water Type Code (31) as defined in WAC 220-14-050 (1)
 - Water Type Code (32) as defined in WAC 220-14-050 (1)
 - Water Type Code (33) as defined in WAC 220-14-050 (1)
 - Water Type Code (34) as defined in WAC 220-14-050 (1)
 - Water Type Code (35) as defined in WAC 220-14-050 (1)
 - Water Type Code (36) as defined in WAC 220-14-050 (1)
 - Water Type Code (37) as defined in WAC 220-14-050 (1)
 - Water Type Code (38) as defined in WAC 220-14-050 (1)
 - Water Type Code (39) as defined in WAC 220-14-050 (1)
 - Water Type Code (40) as defined in WAC 220-14-050 (1)
 - Water Type Code (41) as defined in WAC 220-14-050 (1)
 - Water Type Code (42) as defined in WAC 220-14-050 (1)
 - Water Type Code (43) as defined in WAC 220-14-050 (1)
 - Water Type Code (44) as defined in WAC 220-14-050 (1)
 - Water Type Code (45) as defined in WAC 220-14-050 (1)
 - Water Type Code (46) as defined in WAC 220-14-050 (1)
 - Water Type Code (47) as defined in WAC 220-14-050 (1)
 - Water Type Code (48) as defined in WAC 220-14-050 (1)
 - Water Type Code (49) as defined in WAC 220-14-050 (1)
 - Water Type Code (50) as defined in WAC 220-14-050 (1)



This map was created from aerial photography and other data sources. It is not a legal document. It is intended for informational purposes only. The user assumes all responsibility for any use of this map. The user agrees to hold the State of Washington and the Department of Natural Resources harmless from any and all claims, damages, or expenses, including reasonable attorneys' fees, arising from the use of this map. The user agrees to indemnify and hold the State of Washington and the Department of Natural Resources harmless from any and all claims, damages, or expenses, including reasonable attorneys' fees, arising from the use of this map.

This map was created from aerial photography and other data sources. It is not a legal document. It is intended for informational purposes only. The user assumes all responsibility for any use of this map. The user agrees to hold the State of Washington and the Department of Natural Resources harmless from any and all claims, damages, or expenses, including reasonable attorneys' fees, arising from the use of this map. The user agrees to indemnify and hold the State of Washington and the Department of Natural Resources harmless from any and all claims, damages, or expenses, including reasonable attorneys' fees, arising from the use of this map.

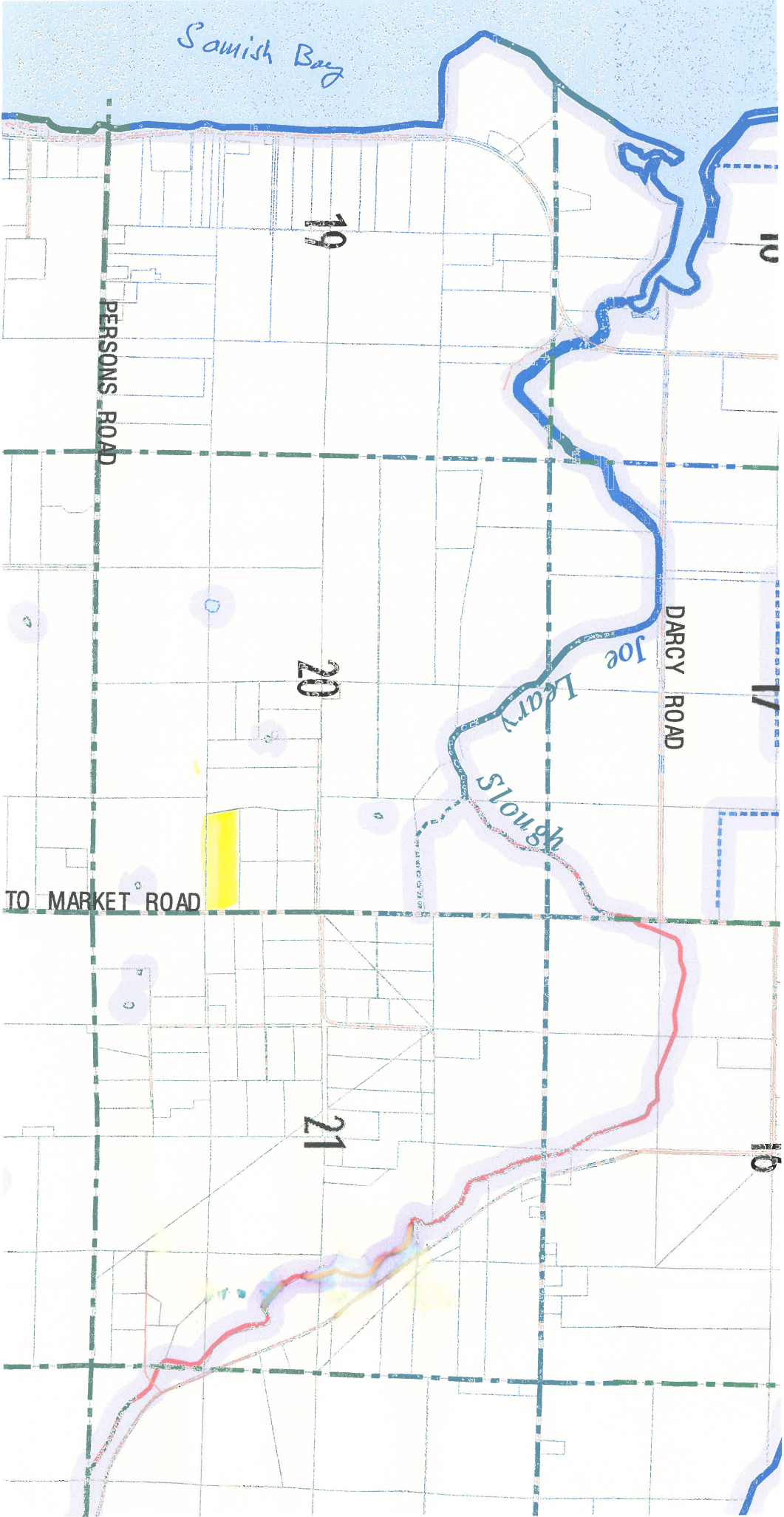
This map was created from aerial photography and other data sources. It is not a legal document. It is intended for informational purposes only. The user assumes all responsibility for any use of this map. The user agrees to hold the State of Washington and the Department of Natural Resources harmless from any and all claims, damages, or expenses, including reasonable attorneys' fees, arising from the use of this map. The user agrees to indemnify and hold the State of Washington and the Department of Natural Resources harmless from any and all claims, damages, or expenses, including reasonable attorneys' fees, arising from the use of this map.

This map was created from aerial photography and other data sources. It is not a legal document. It is intended for informational purposes only. The user assumes all responsibility for any use of this map. The user agrees to hold the State of Washington and the Department of Natural Resources harmless from any and all claims, damages, or expenses, including reasonable attorneys' fees, arising from the use of this map. The user agrees to indemnify and hold the State of Washington and the Department of Natural Resources harmless from any and all claims, damages, or expenses, including reasonable attorneys' fees, arising from the use of this map.

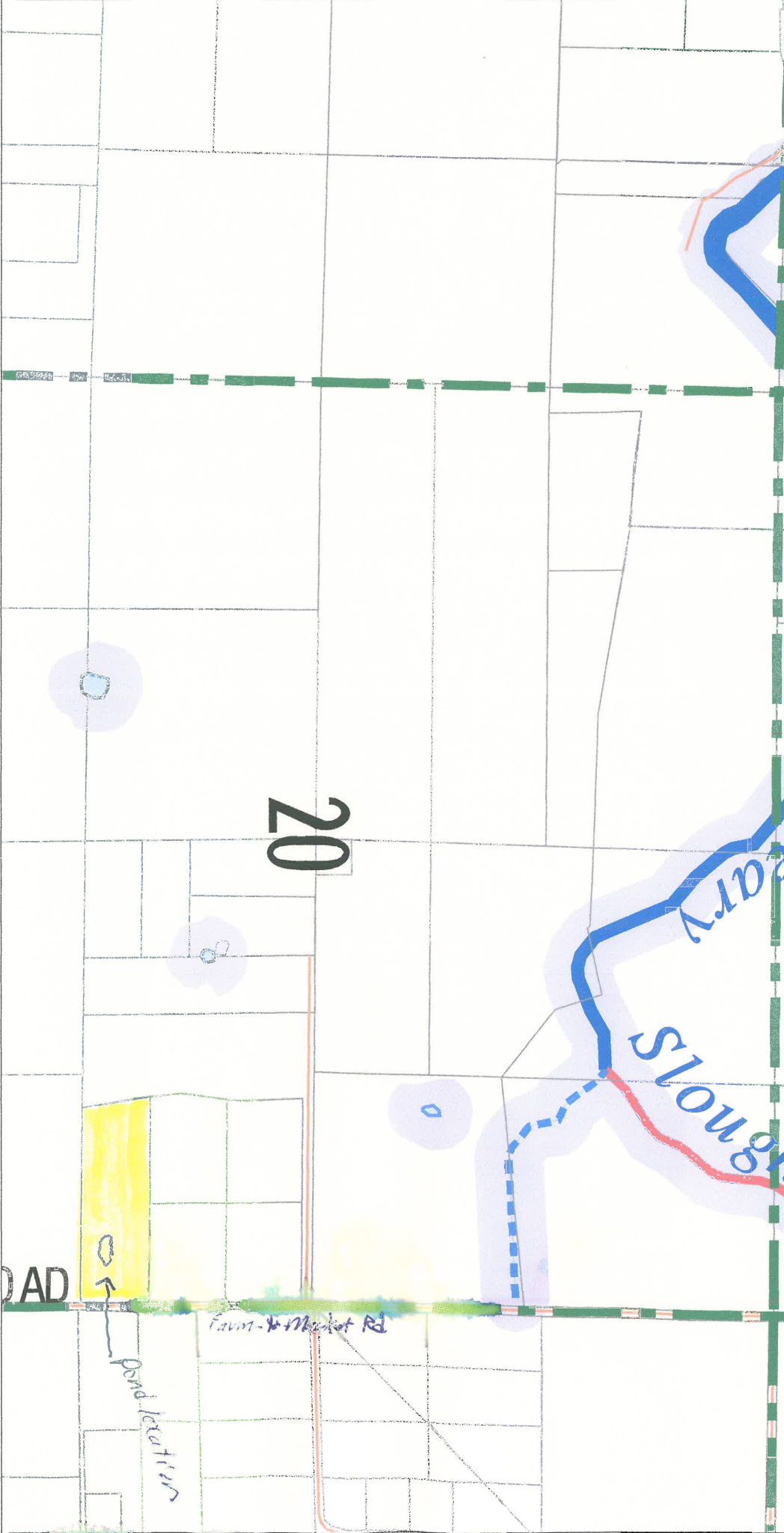


Scale: 1 inch = 2000 feet
Map Scale: 1:24,000

T35N R3 and 4E W.M.



Location in yellow



20

SLOUGH
PARTY

Farm-to-Market Rd

ROAD

pond location