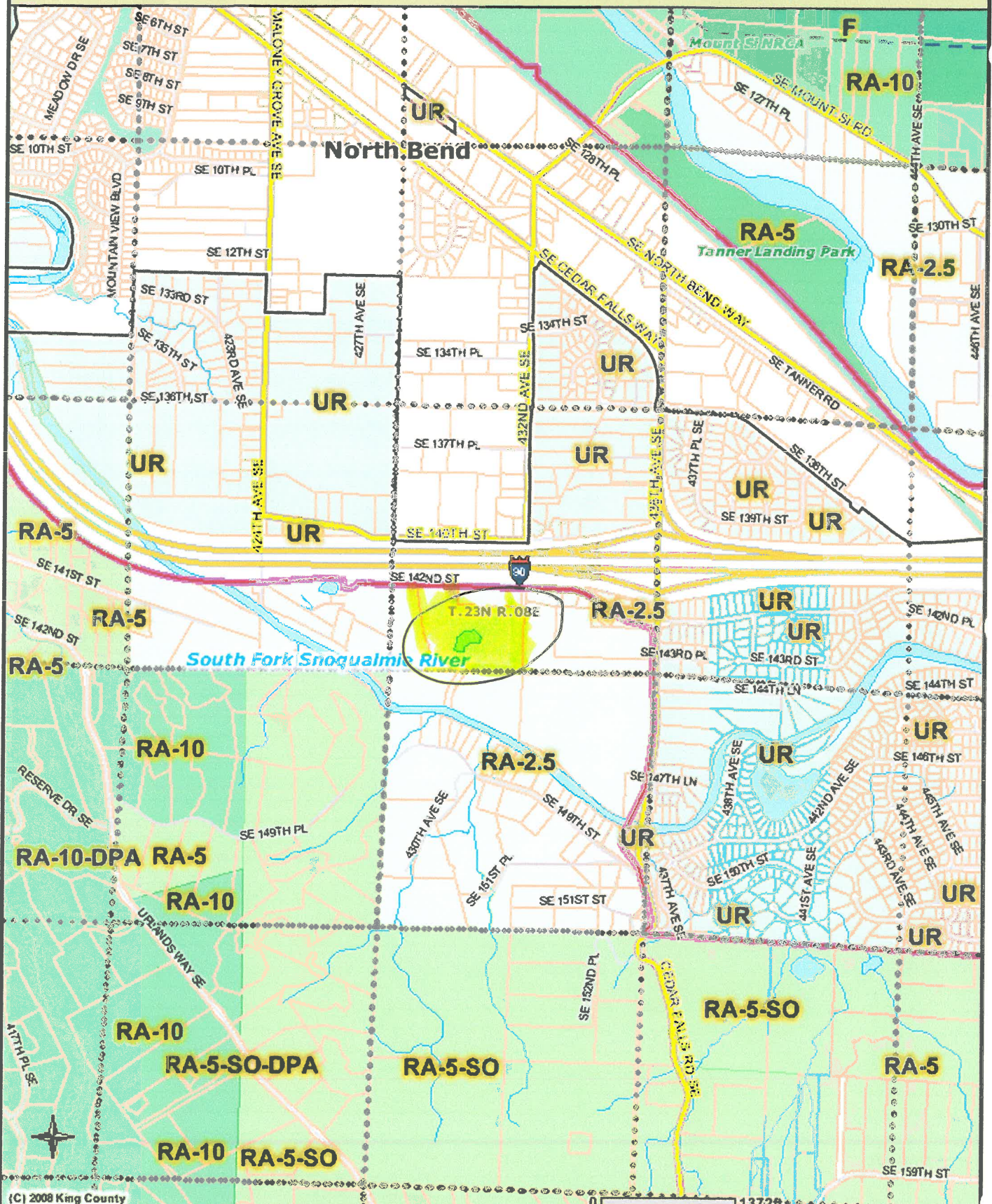


# IMAP



(C) 2008 King County

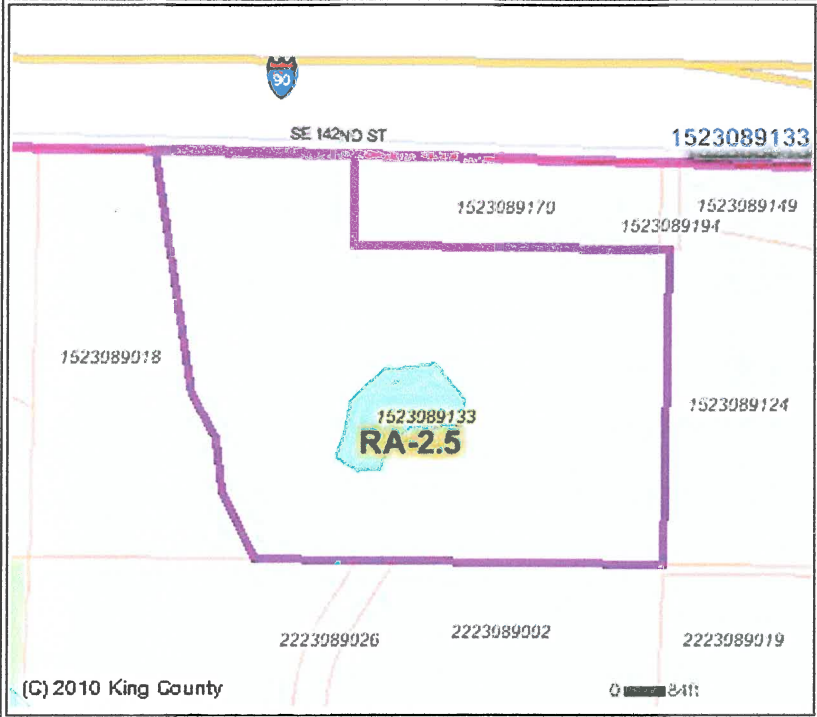
The information included on this map has been compiled by King County staff from a variety of sources and is subject to change without notice. King County makes no representations or warranties, express or implied, as to accuracy, completeness, timeliness, or rights to the use of such information. This document is not intended for use as a survey product. King County shall not be liable for any general, special, indirect, incidental, or consequential damages including, but not limited to, lost revenues or lost profits resulting from the use or misuse of the information contained on this map. Any sale of this map or information on this map is prohibited except by written permission of King County.



Date: 4/2/2012 Source: King County IMAP - Property Information (<http://www.metrokc.gov/GIS/IMAP>)



### Parcel Map and Data



<b>Parcel Number</b>	1523089133
<b>Site Address</b>	
<b>Zip code</b>	
<b>Taxpayer</b>	CREEKSIDE LAND COMPANY

The information included on this map has been compiled by King County staff from a variety of sources and is subject to change without notice. King County makes no representations or warranties, express or implied, as to accuracy, completeness, timeliness, or rights to the use of such information. King County shall not be liable for any general, special, indirect, incidental, or consequential damages including, but not limited to, lost revenues or lost profits resulting from the use or misuse of the information contained on this map. Any sale of this map or information on this map is prohibited except by written permission of King County."

[King County](#) | [GIS Center](#) | [News](#) | [Services](#) | [Comments](#) | [Search](#)

By visiting this and other King County web pages, you expressly agree to be bound by terms and conditions of the site. [The details.](#)