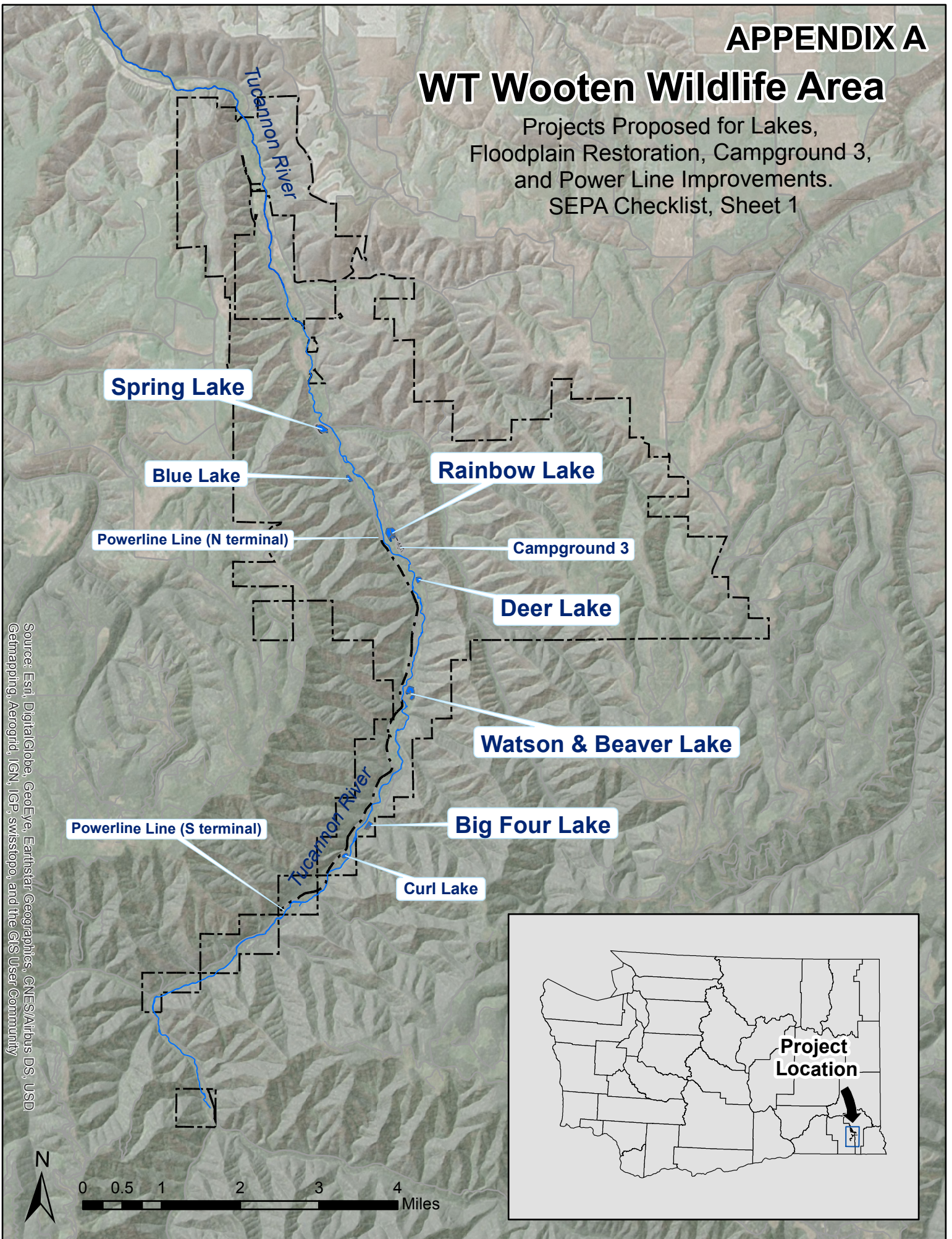


# APPENDIX A

## WT Wooten Wildlife Area

Projects Proposed for Lakes,  
Floodplain Restoration, Campground 3,  
and Power Line Improvements.  
SEPA Checklist, Sheet 1



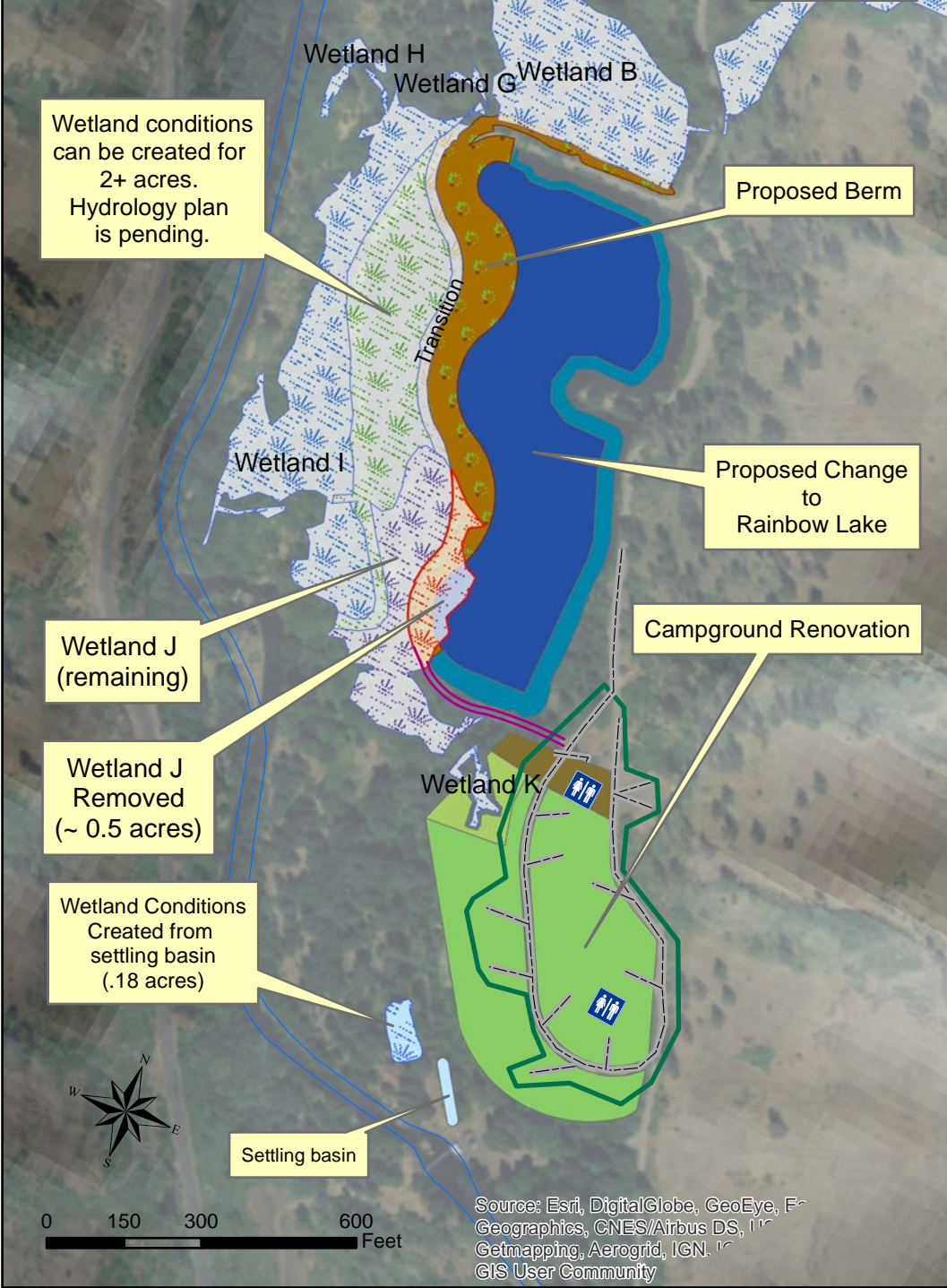
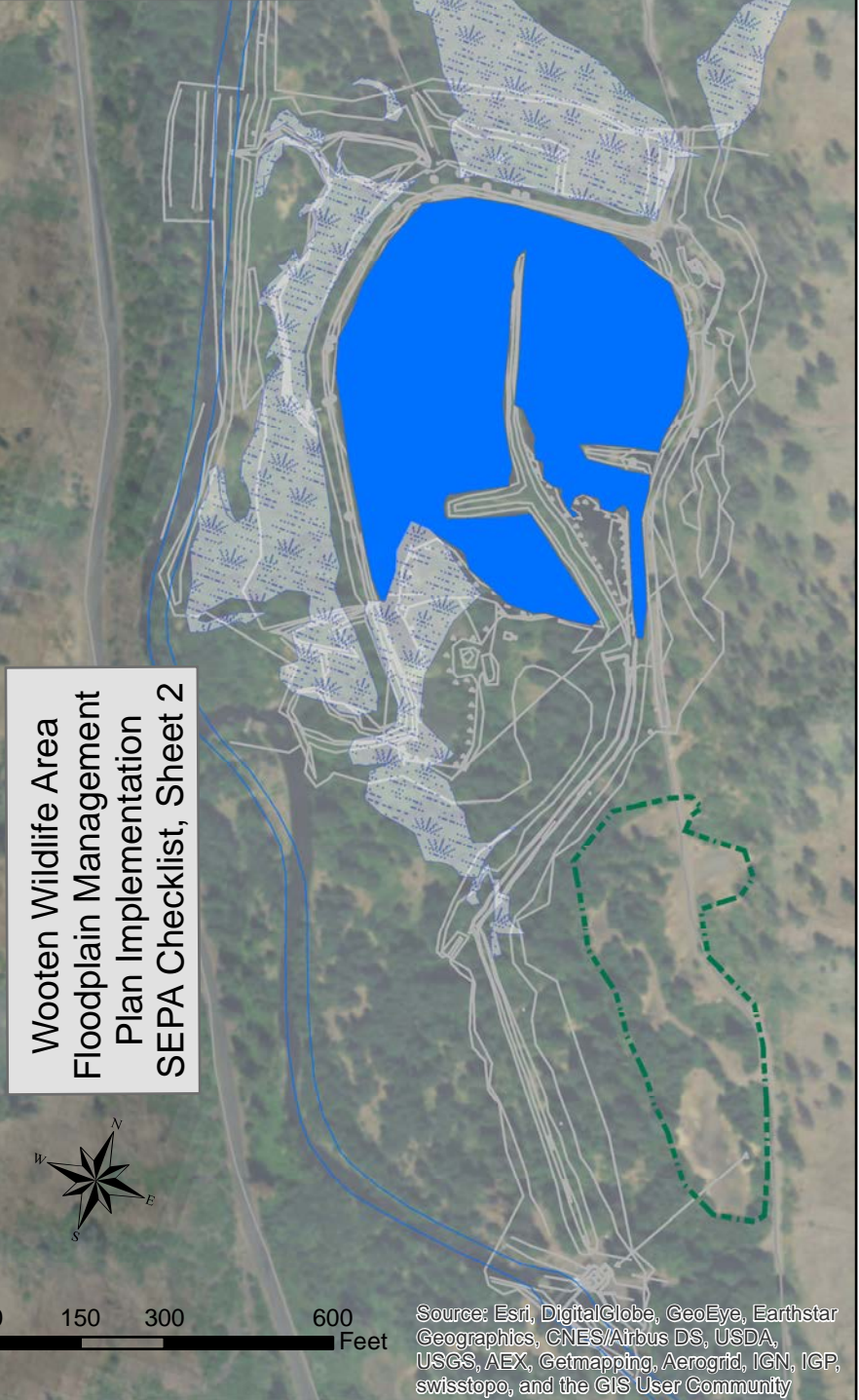
Source: Esri, DigitalGlobe, GeoEye, Earthstar Geographics, CNES/Airbus DS, USDA  
Getmapping, Aergrid, IGN, JGP, swisstopo, and the GIS User Community



Existing Condition

# Rainbow Lake and Campground 3

Proposed



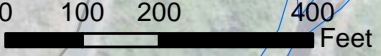
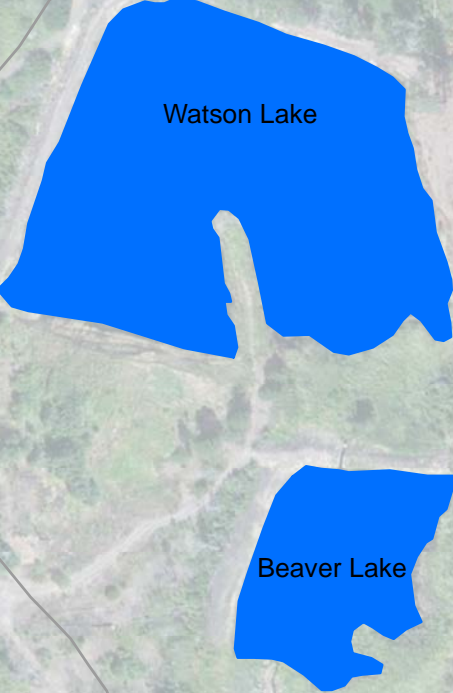


Existing Condition

# Watson and Beaver Lakes

Proposed

Wooten Wildlife Area  
Floodplain Management  
Plan Implementation  
SEPA Checklist, Sheet 3



Source: Esri, DigitalGlobe, GeoEye, Earthstar Geographics, CNES/Airbus DS, USDA, USGS, AEX, Getmapping, Aerogrid, IGN, IGP, swisstopo, and the GIS User Community

Set-back Dike

Watson-Beaver Lake

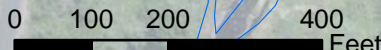
Develop spring-fed water source

New Outlet

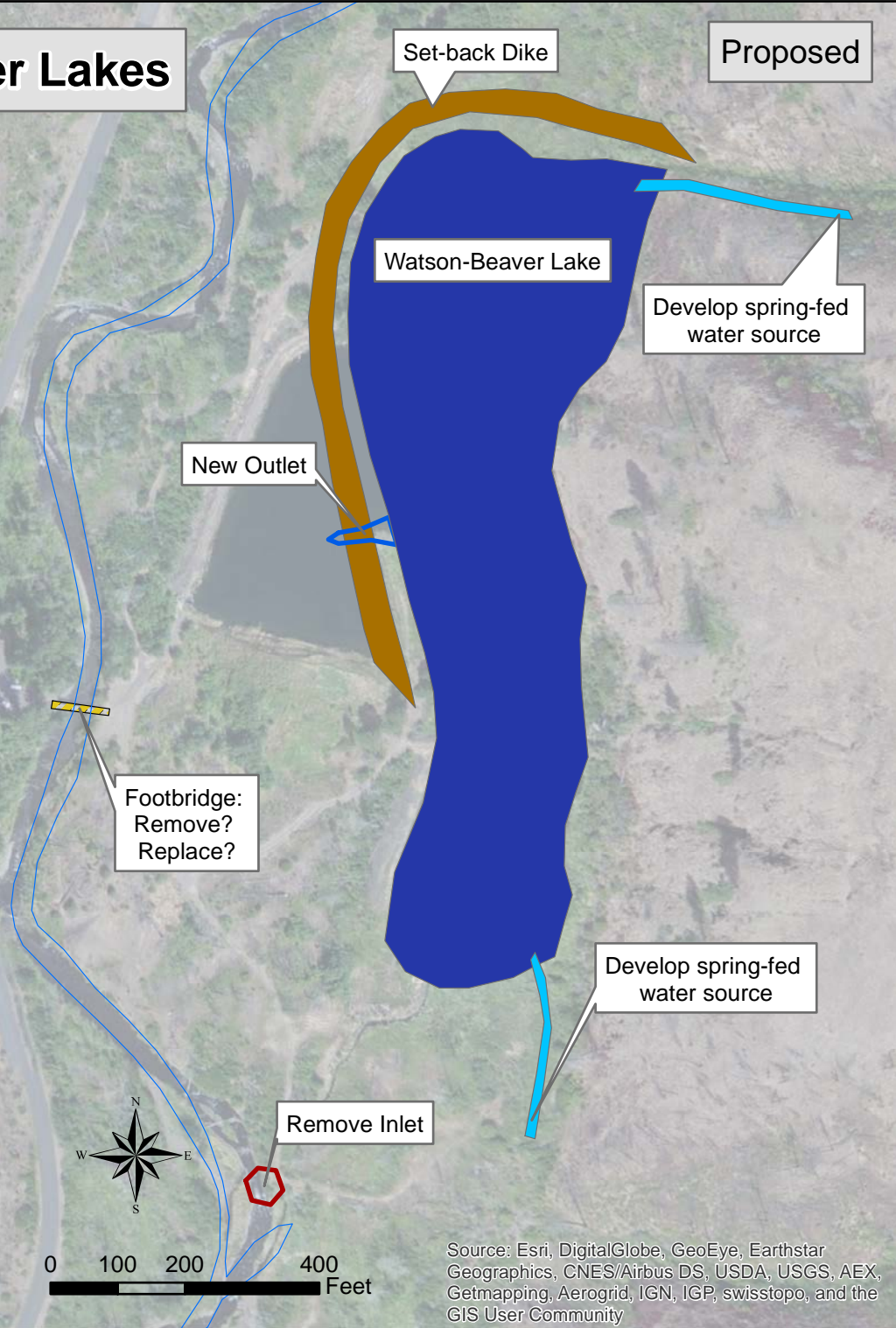
Footbridge: Remove? Replace?

Develop spring-fed water source

Remove Inlet



Source: Esri, DigitalGlobe, GeoEye, Earthstar Geographics, CNES/Airbus DS, USDA, USGS, AEX, Getmapping, Aerogrid, IGN, IGP, swisstopo, and the GIS User Community



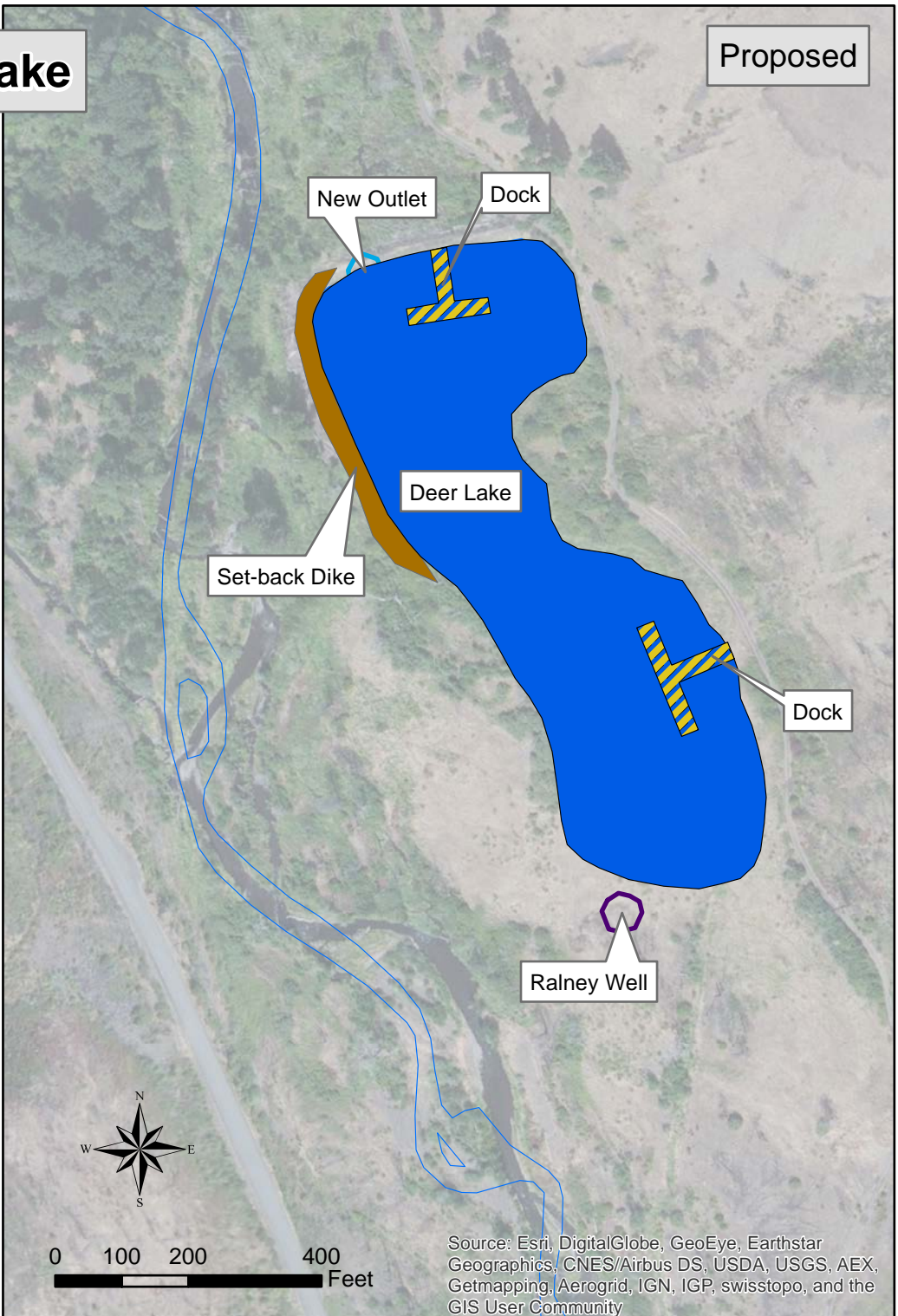


Existing Condition

Deer Lake

Proposed

Wooten Wildlife Area  
Floodplain Management  
Plan Implementation  
SEPA Checklist, Sheet 4



0 100 200 400 Feet

Source: Esri, DigitalGlobe, GeoEye, Earthstar Geographics, CNES/Airbus DS, USDA, USGS, AEX, Getmapping, Aerogrid, IGN, IGP, swisstopo, and the GIS User Community



0 100 200 400 Feet

Source: Esri, DigitalGlobe, GeoEye, Earthstar Geographics, CNES/Airbus DS, USDA, USGS, AEX, Getmapping, Aerogrid, IGN, IGP, swisstopo, and the GIS User Community



Existing Condition

# Big 4 Lake

Proposed

Wooten Wildlife Area  
Floodplain Management  
Plan Implementation  
SEPA Checklist, Sheet 5

Big 4 Lake

Remove Dike

Create Wetland  
Conditions

Improved hydraulic continuity  
with floodplain sought;  
Hydrologic/hydraulic analysis  
to be accomplished prior to work.



0 60 120 240  
Feet

Source: Esri, DigitalGlobe, GeoEye, Earthstar  
Geographics, CNES/Airbus DS, USDA, USGS,  
AEX, Getmapping, Aerogrid, IGN, IGP,  
swisstopo, and the GIS User Community



0 60 120 240  
Feet

Source: Esri, DigitalGlobe, GeoEye, Earthstar  
Geographics, CNES/Airbus DS, USDA, USGS, AEX,  
Getmapping, Aerogrid, IGN, IGP, swisstopo, and the  
GIS User Community



Existing Condition

# Spring Lake

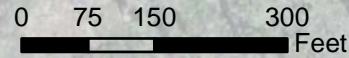
Proposed

Wooten Wildlife Area  
Floodplain Management  
Plan Implementation  
SEPA Checklist, Sheet 6

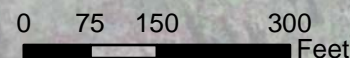
Spring Lake

Accessible Trail

Parking Area Improvement



Source: Esri, DigitalGlobe, GeoEye, Earthstar Geographics, CNES/Airbus DS, USDA, USGS, AEX, Getmapping, Aerogrid, IGN, IGP, swisstopo, and the GIS User Community



Source: Esri, DigitalGlobe, GeoEye, Earthstar Geographics, CNES/Airbus DS, USDA, USGS, AEX, Getmapping, Aerogrid, IGN, IGP, swisstopo, and the GIS User Community



# WT Wooten Wildlife Area

Projects Proposed for Lakes,  
Floodplain Restoration, Campground 3,  
and Power Line Improvements.  
SEPA Checklist, Soil Deposition, Sheet 7

**Spring Lake**

**Soil  
Deposition  
Sites**

**Blue Lake**

**Rainbow Lake**

**Campground 3**

**Deer Lake**

Source: Esri, DigitalGlobe, GeoEye, Earthstar Geographics, CNES/Airbus DS, USDA  
Gemapping, Aerogrid, IGN, IGP, swisstopo, and the GIS User Community



0 0.2 0.4 0.8 1.2 1.6 Miles