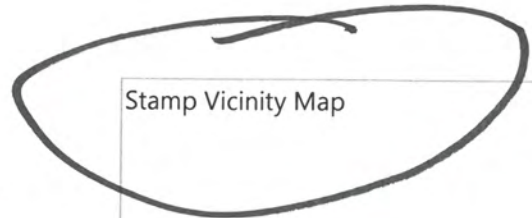
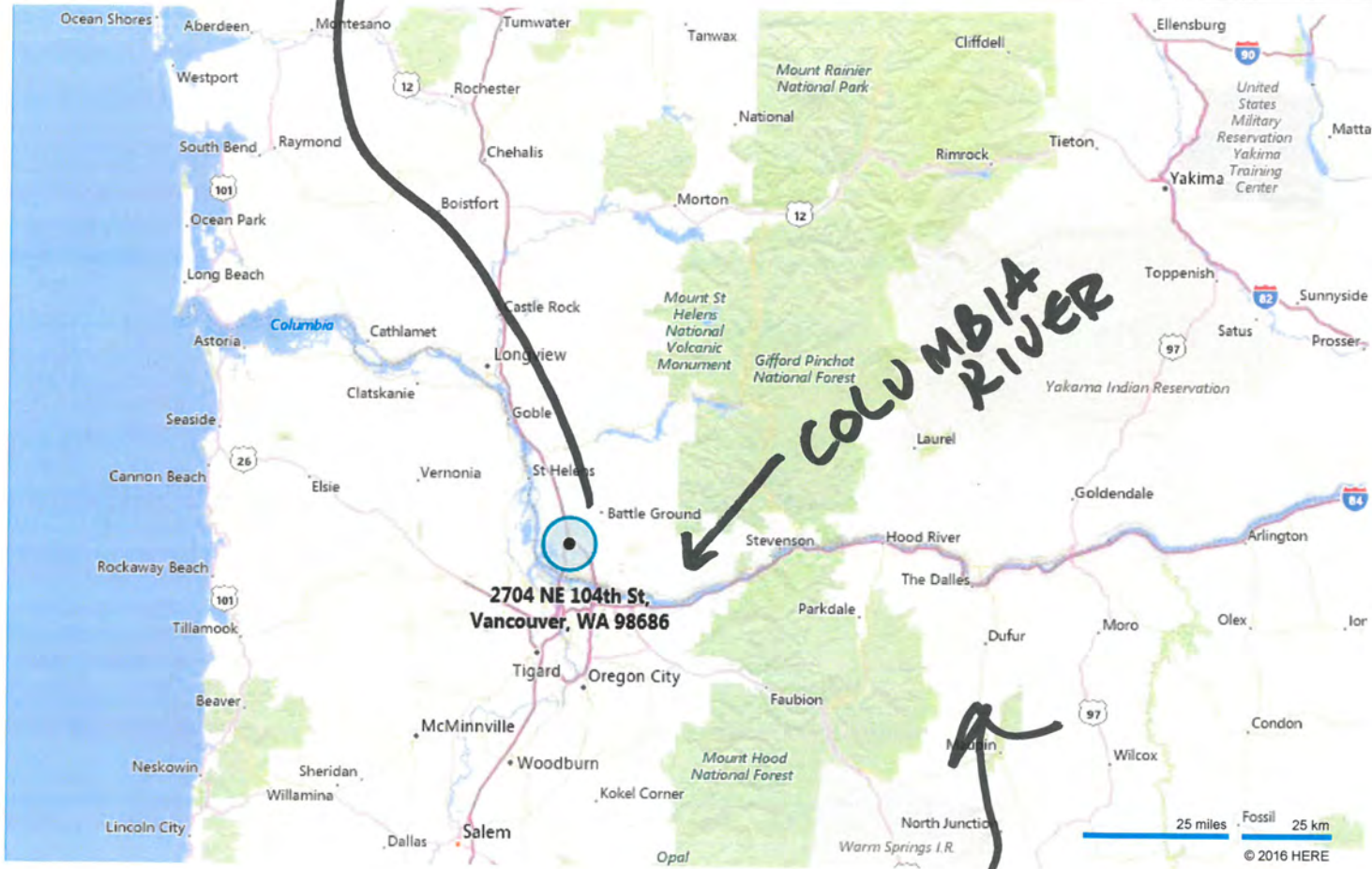


2704 NE 104th St, Vancouver, WA 98686



THIS IS WASHINGTON STATE



THIS IS OREGON STATE

CLOSER VICINITY MAP

- CLARK COUNTY  
- WASHINGTON STATE

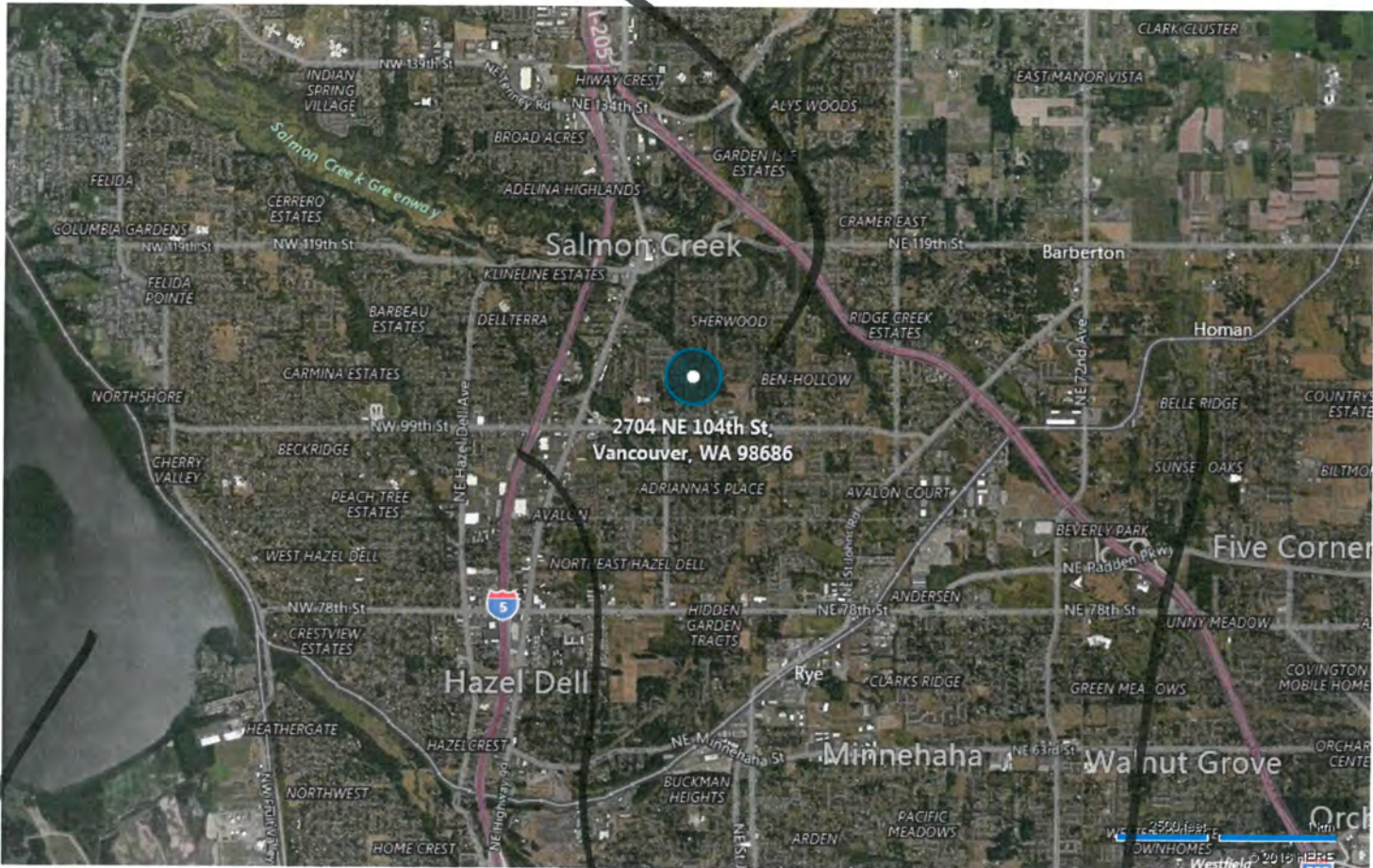
# SATellite View

bing maps

2704 NE 104th St, Vancouver, WA 98686

Satellite Vicinity Map

VANCOUVER  
WA



IS Freeway

VANCOUVER  
LAKE

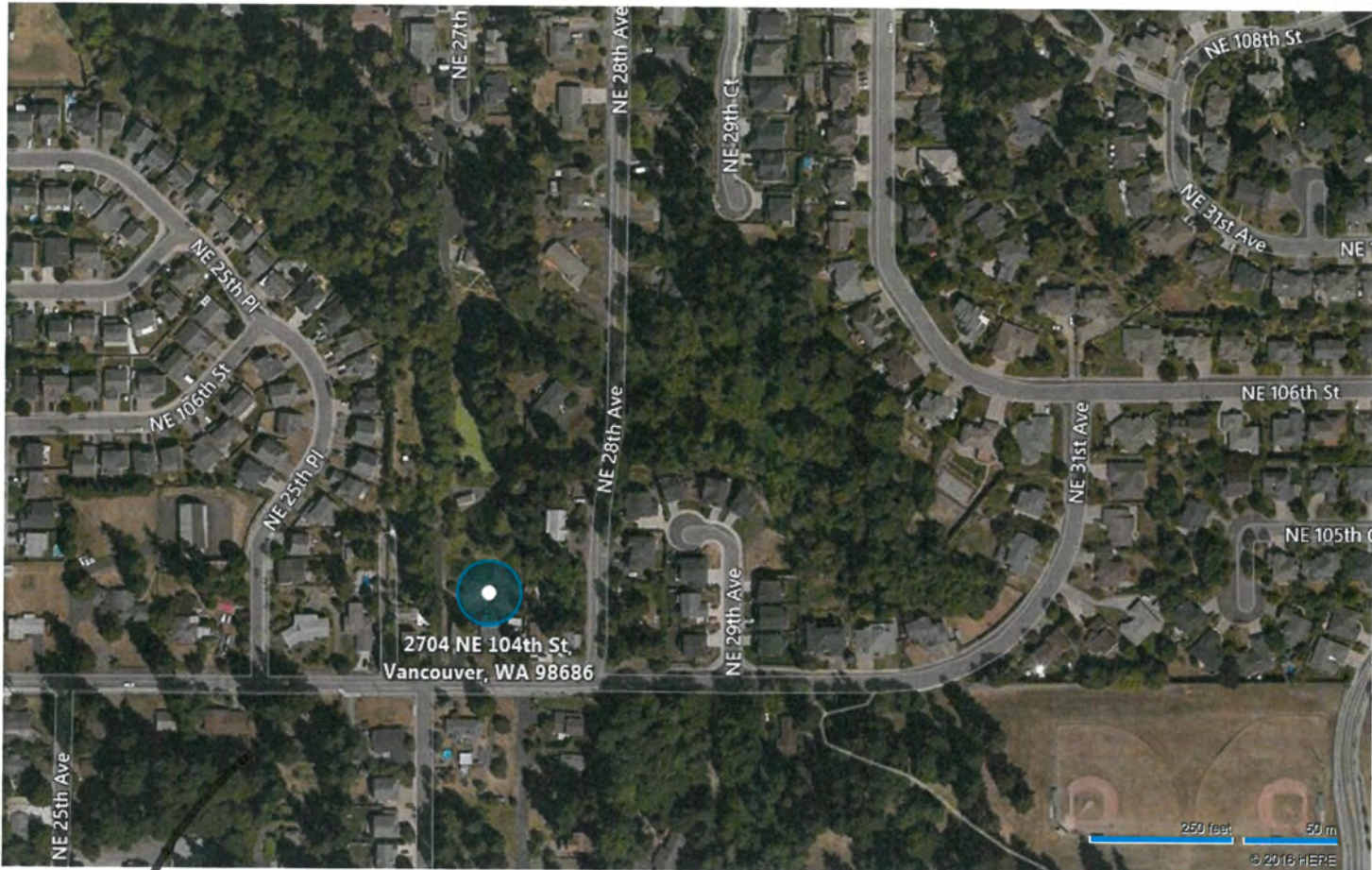
- WASHINGTON STATE
- CLARK COUNTY
- VANCOUVER WA

# CLOSER SATellite view

bing maps

2704 NE 104th St, Vancouver, WA 98686

Type your notes here.

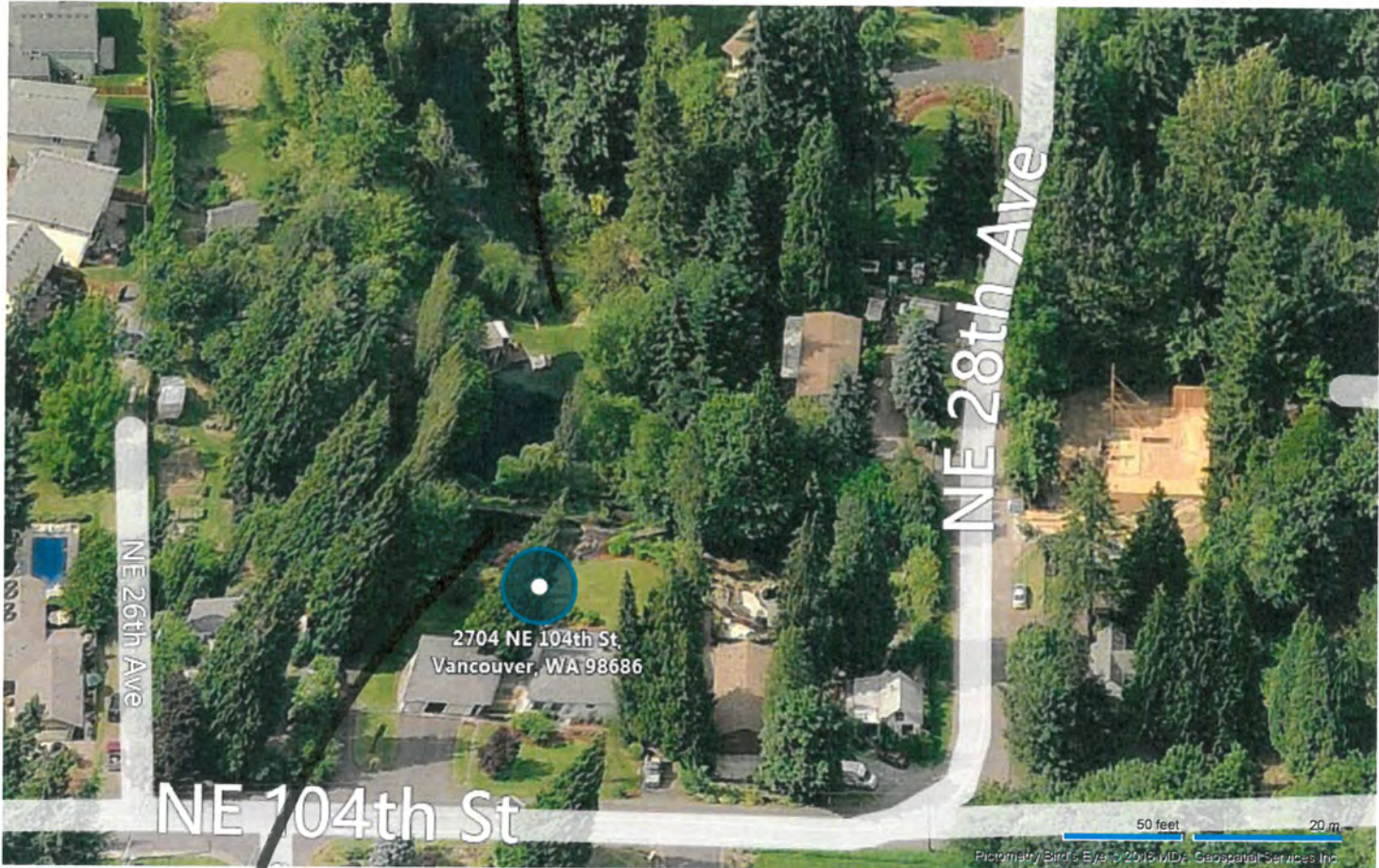


WASHINGTON STATE  
CLARK COUNTY  
VANCOUVER WA

2704 NE 104th St, Vancouver, WA 98686

Overview of Stamp Property

LOWER POND

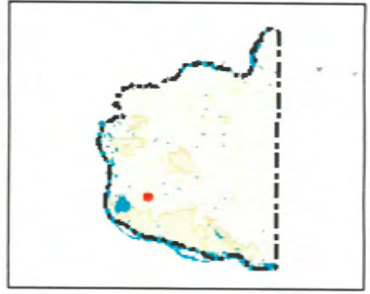
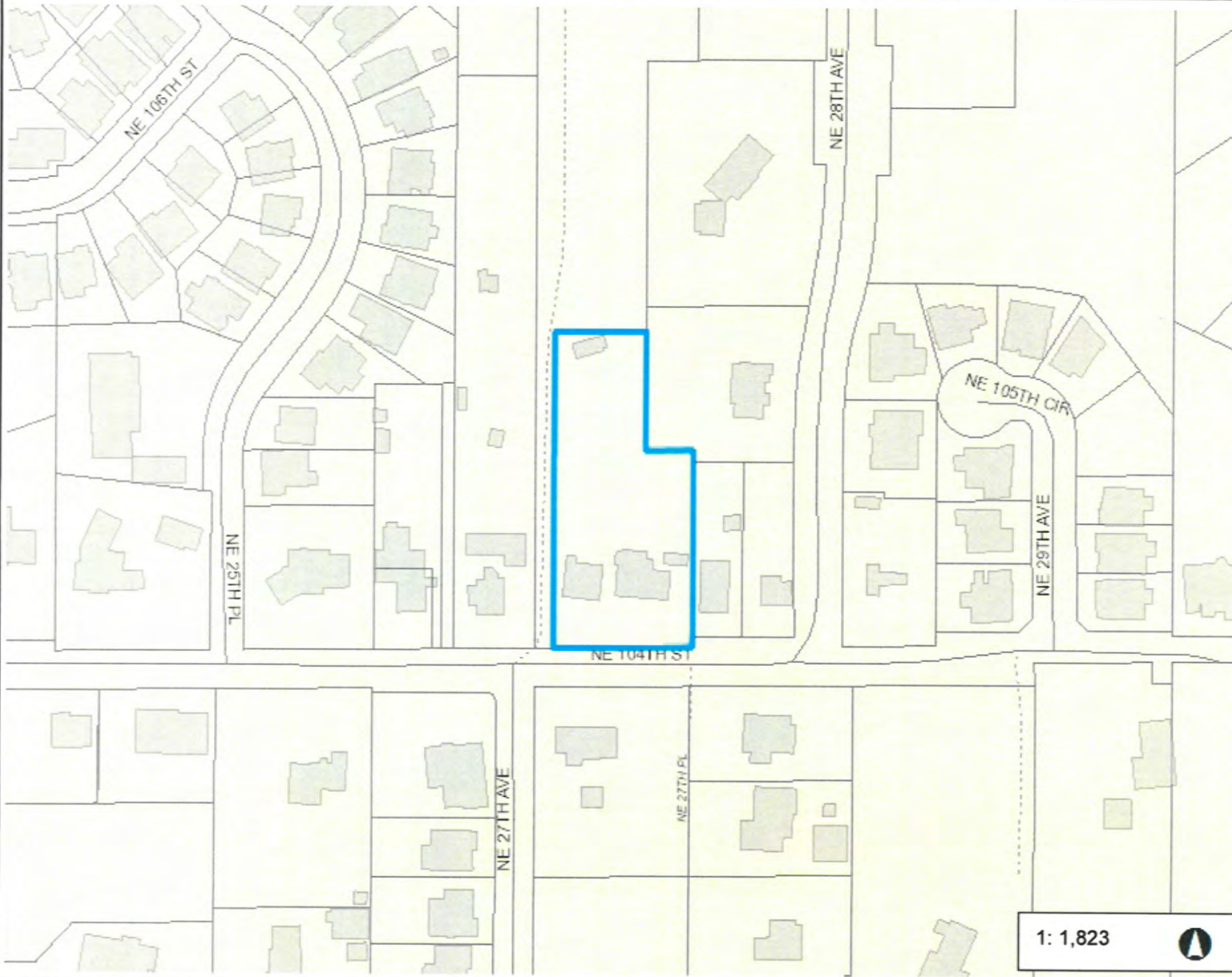


UPPER POND

Road View  
WASHINGTON STATE  
CLARK COUNTY  
VANCOUVER WA



# Stamp Property

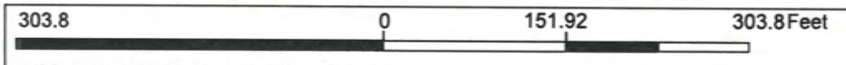


**Legend**

- Building Footprints
- Taxlots
- Cities Boundaries
- Urban Growth Boundaries

**Notes:**

1: 1,823



WGS\_1984\_Web\_Mercator\_Auxiliary\_Sphere  
Clark County, WA. GIS - <http://gis.clark.wa.gov>

This map was generated by Clark County's "MapsOnline" website. Clark County does not warrant the accuracy, reliability or timeliness of any information on this map, and shall not be held liable for losses caused by using this information.



# Stamp Property



## Legend

- Building Footprints
- Taxlots
- ImageBestRes**
- Red: Band\_1
- Green: Band\_2
- Blue: Band\_3
- Cities Boundaries
- Urban Growth Boundaries

## Notes:

1: 912



151.9 0 75.96 151.9Feet

WGS\_1984\_Web\_Mercator\_Auxiliary\_Sphere  
Clark County, WA. GIS - <http://gis.clark.wa.gov>

This map was generated by Clark County's "MapsOnline" website. Clark County does not warrant the accuracy, reliability or timeliness of any information on this map, and shall not be held liable for losses caused by using this information.



POND #1



BETWEEN  
#1 & #2





POND #2



POND #2

A photograph of a pond with handwritten text and an arrow pointing to a pipe. The pond is surrounded by dense vegetation, including willow trees and various green plants. The water in the pond is greenish, suggesting algae. A white pipe is visible in the foreground, partially obscured by green foliage. The text 'POND #2' is written in black marker, and 'FLOWS INTO THIS POND' is written below it with an arrow pointing to the pipe.

POND #2

FLOWS INTO  
THIS POND