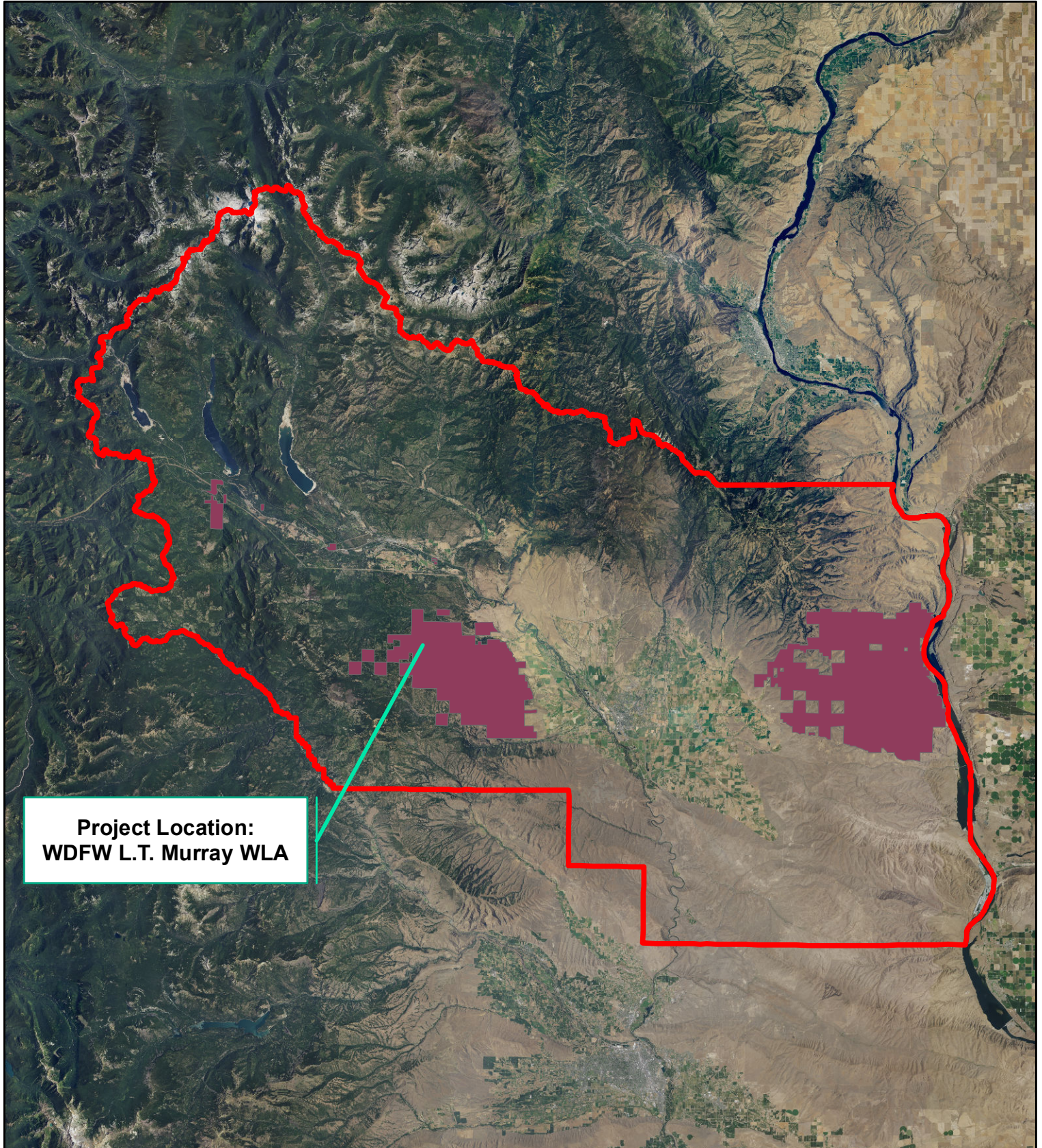
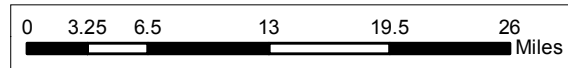
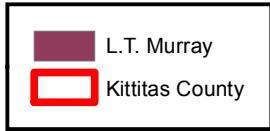


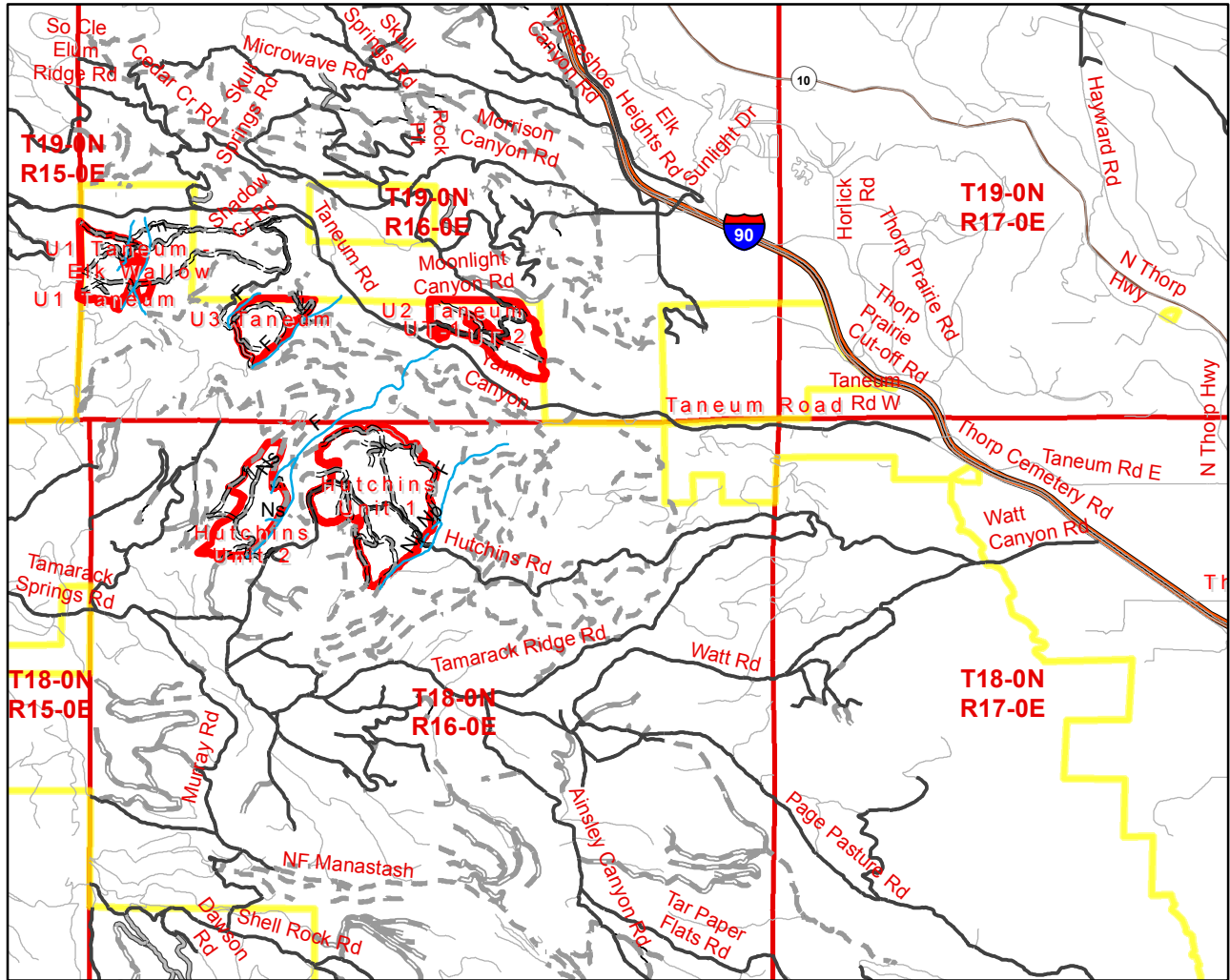
# Hutchins Forest Thinning Project - Project Location

Compiled by Forester Rod Pfeifle

Date: 11/30/2016



# Hutchins/TaneumThin SEPA Vicinity Map



**Legend**

- WDFW Wildlife Area
- Unit Boundary
- ==== Project\_Road
- Project\_Streams

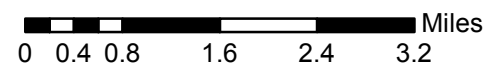
**Roads By Status**

**ROAD\_STATUS\_CD**

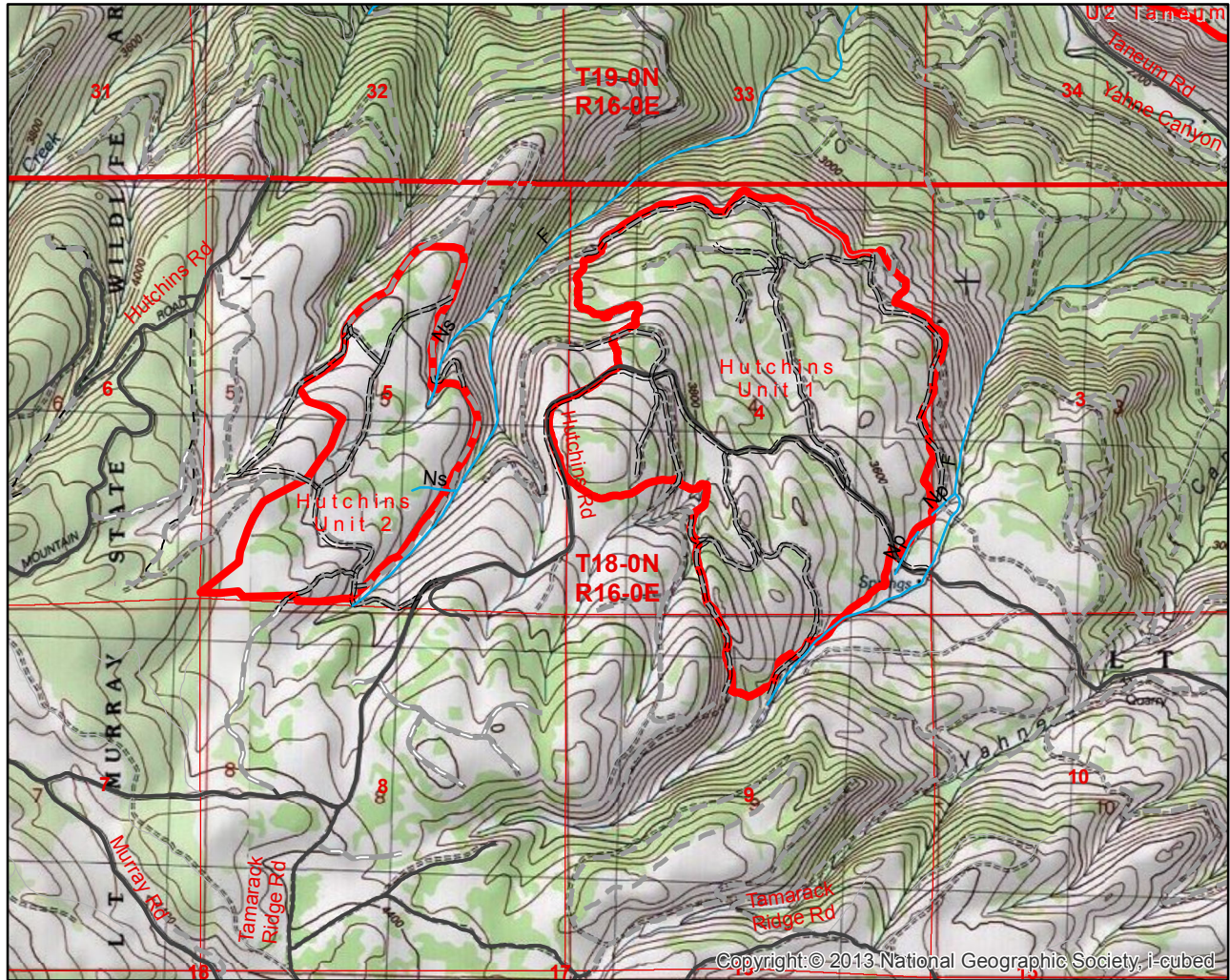
- 1: Active
- 2: Closed
- 3: Decommissioned
- 4: Pending Abandonment
- - - 5: FP Abandoned
- 6: Orphaned
- + + + + 7: Planned
- 9: Unknown



1 inch = 1.58 miles




# Hutchins Thin SEPA Contour Map



Copyright © 2013 National Geographic Society, i-cubed

## Legend

 WDFW Wildlife Area


 Unit Boundary


 Project\_Road

 Project\_Streams

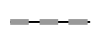
## Roads By Status

### ROAD\_STATUS\_CD


 1: Active


 2: Closed


 3: Decommissioned

 4: Pending Abandonment

 5: FP Abandoned

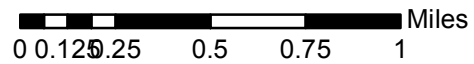
 6: Orphaned

 7: Planned

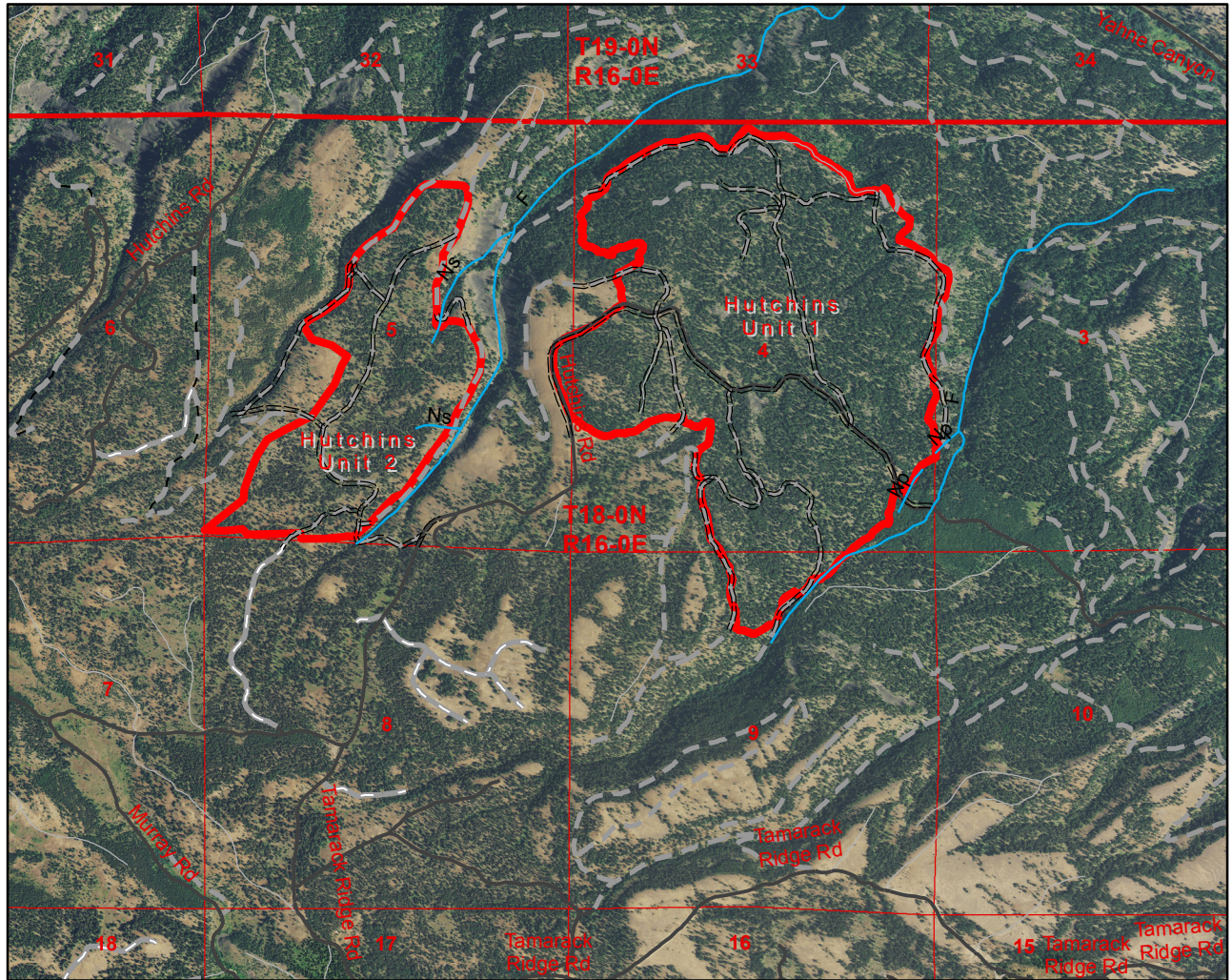
 9: Unknown



1 inch = 0.51 miles



# Hutchins Thin SEPA Photo



**Legend**

- WDFW Wildlife Area
- Unit Boundary
- ==== Project\_Road
- Project\_Streams

**Roads By Status**

**ROAD\_STATUS\_CD**

- 1: Active
- == 2: Closed
- 3: Decommissioned
- - - 4: Pending Abandonment
- - - 5: FP Abandoned
- |||| 6: Orphaned
- ++++ 7: Planned
- 9: Unknown



1 inch = 0.51 miles

