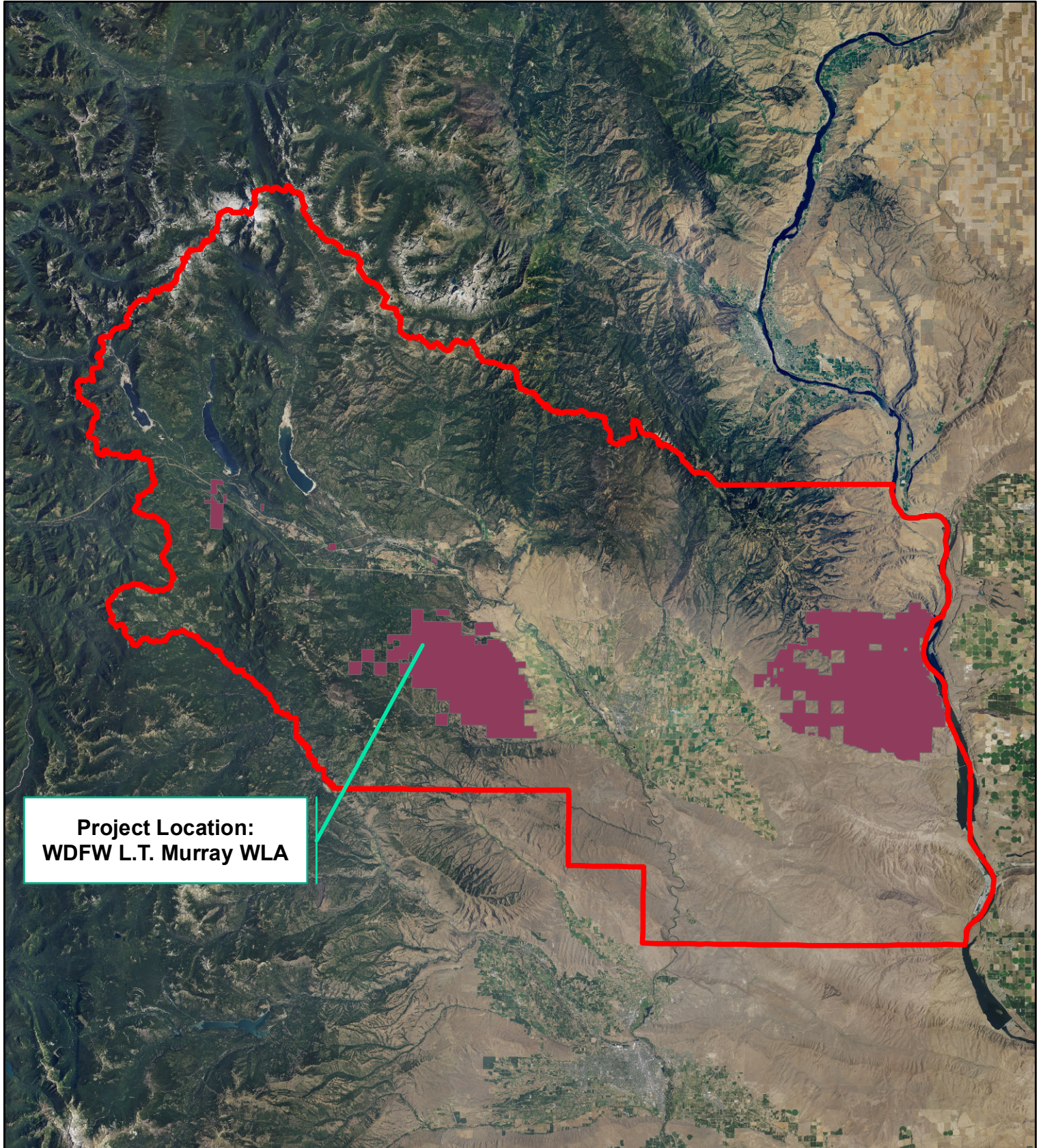
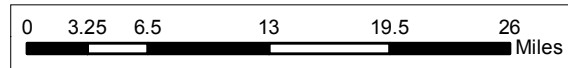
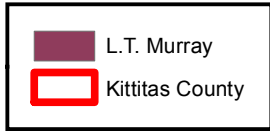


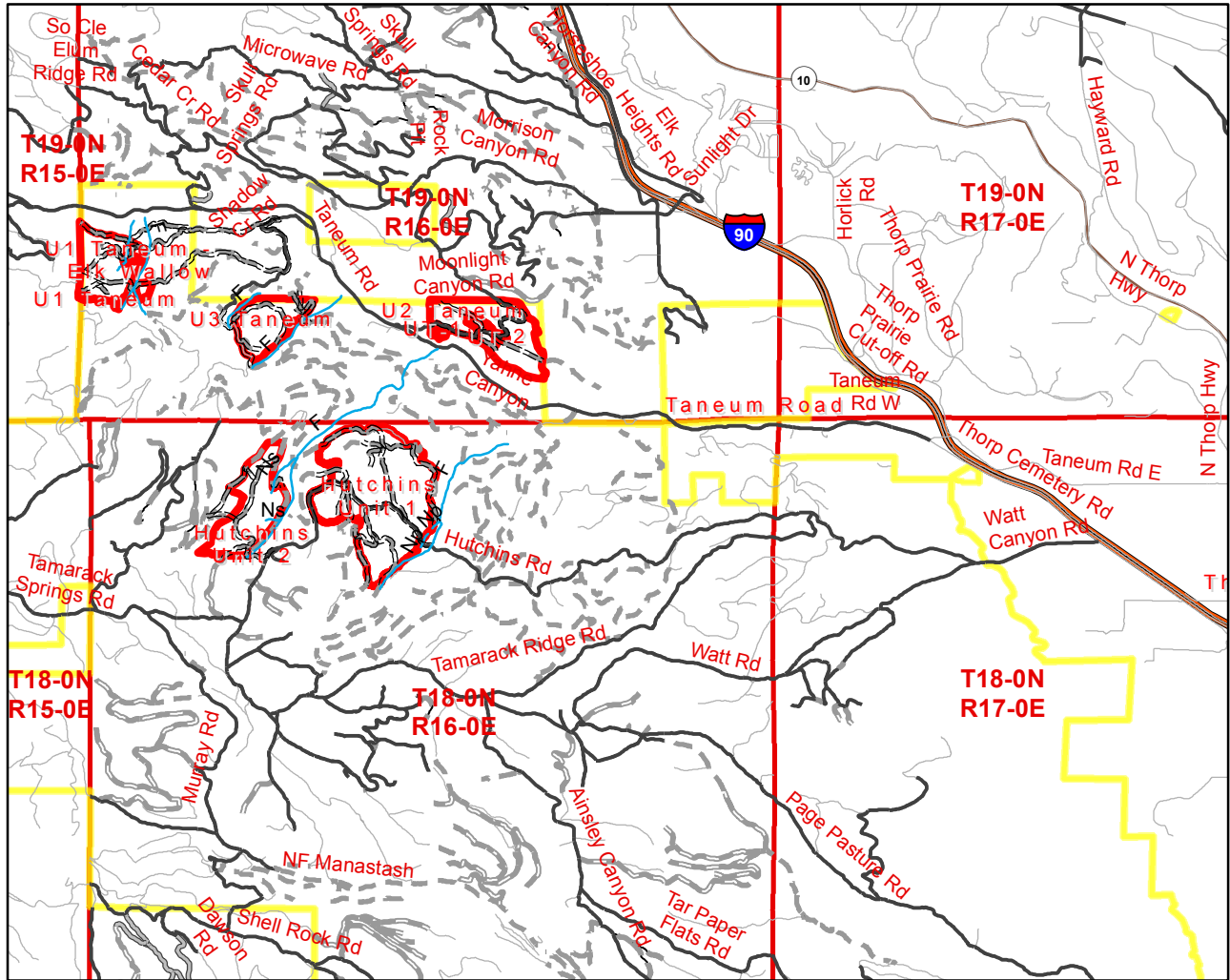
Taneum Forest Thinning Project - Project Location

Compiled by Forester Rod Pfeifle

Date: 11/30/2016



Hutchins/TaneumThin SEPA Vicinity Map



Legend

WDFW Wildlife Area

Unit Boundary

Project_Road

Project_Streams

Roads By Status

ROAD_STATUS_CD

1: Active

2: Closed

3: Decommissioned

4: Pending Abandonment

5: FP Abandoned

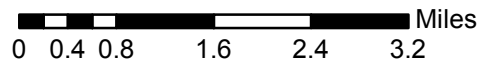
6: Orphaned

7: Planned

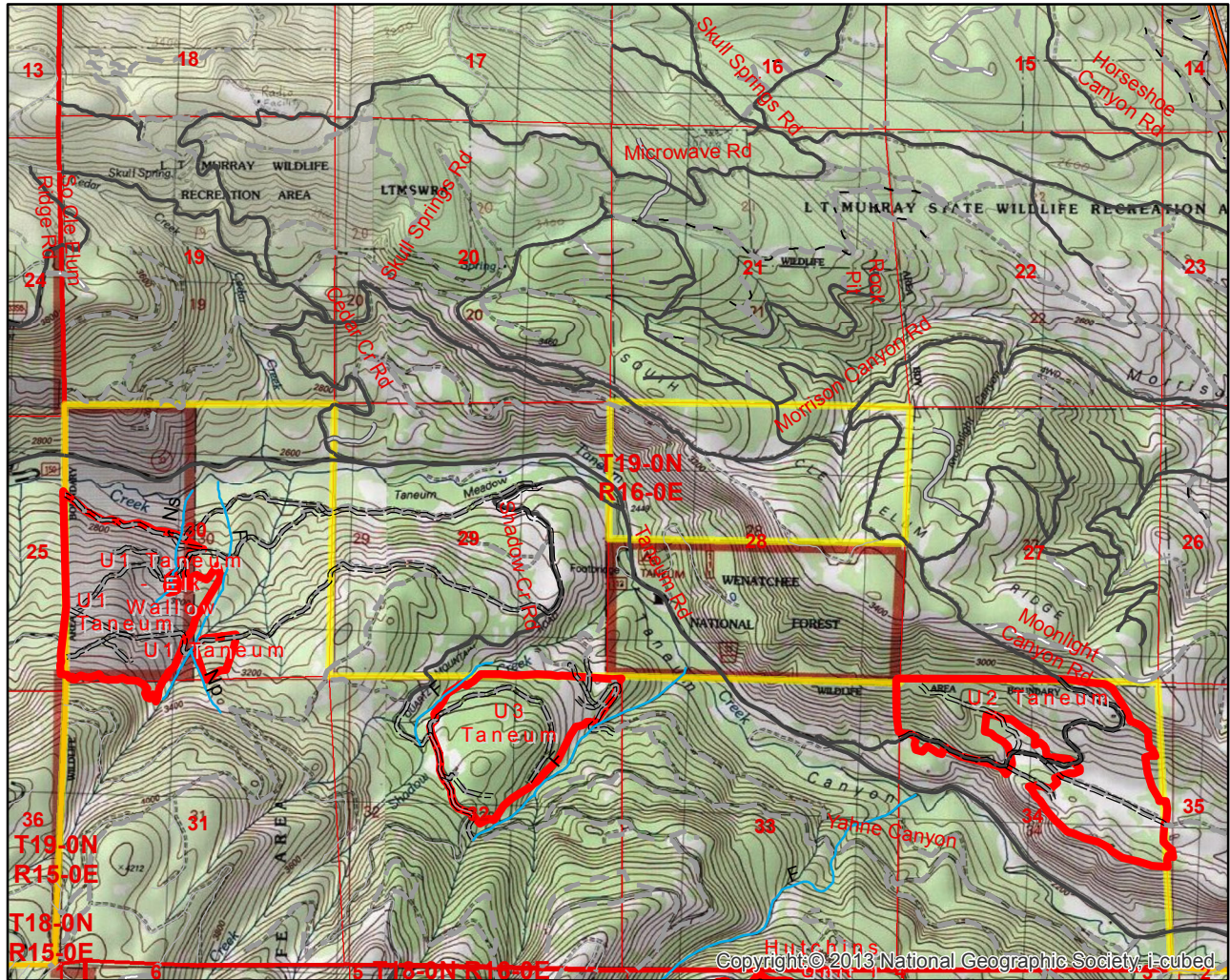
9: Unknown



1 inch = 1.58 miles




Taneum Thin SEPA Contour Map



Legend

 WDFW Wildlife Area


 Project_Road


 Unit Boundary

 Project_Streams

Roads By Status

ROAD_STATUS_CD


 1: Active


 2: Closed


 3: Decommissioned

 4: Pending Abandonment

 5: FP Abandoned

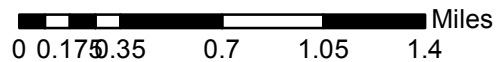
 6: Orphaned

 7: Planned

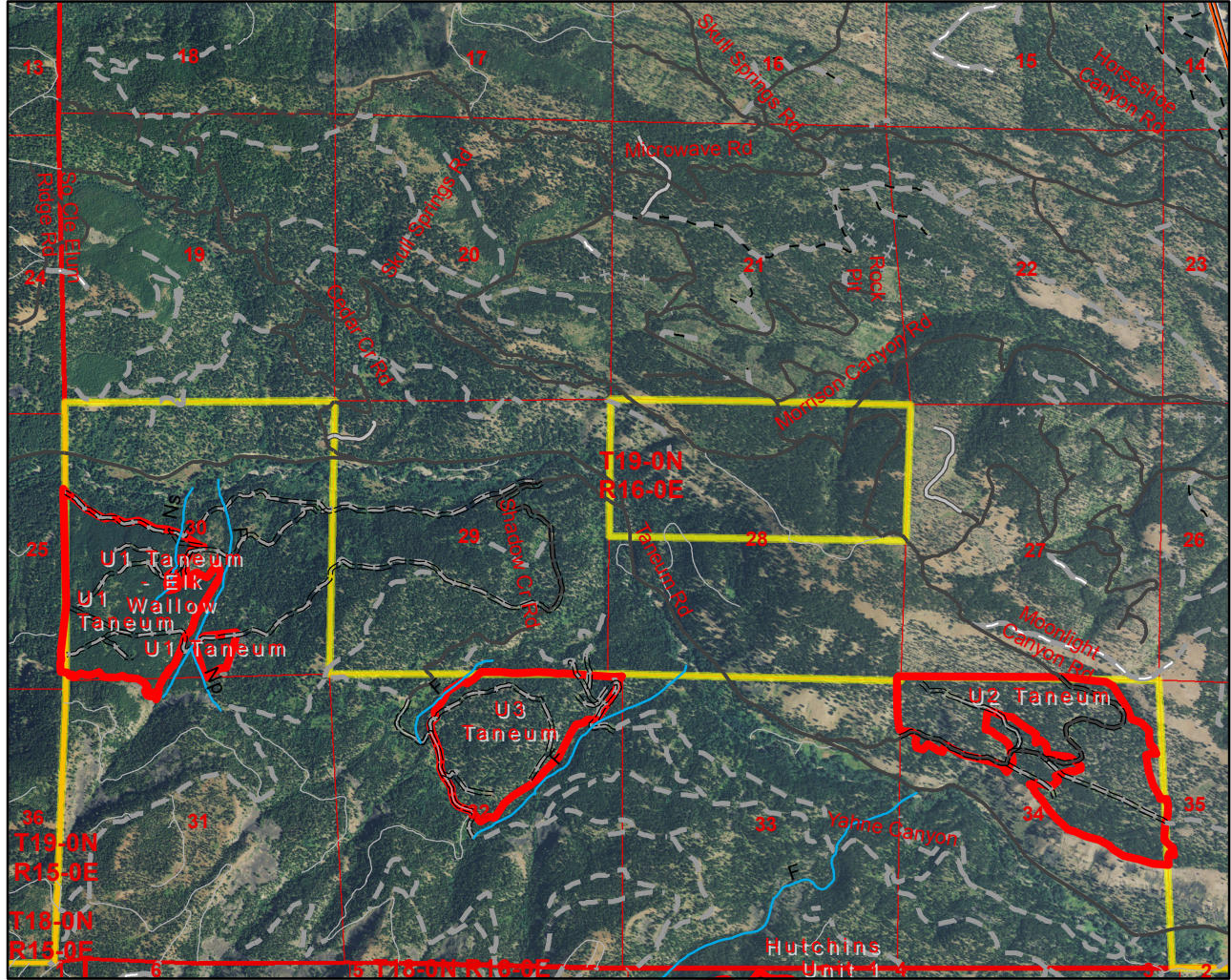
 9: Unknown



1 inch = 0.66 miles



Taneum Thin SEPA Ortho Photo



Legend

 WDFW Wildlife Area


 Project_Road


 Unit Boundary

 Project_Streams

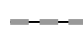
Roads By Status

ROAD_STATUS_CD


 1: Active


 2: Closed


 3: Decommissioned

 4: Pending Abandonment

 5: FP Abandoned

 6: Orphaned

 7: Planned

 9: Unknown



1 inch = 0.66 miles

