



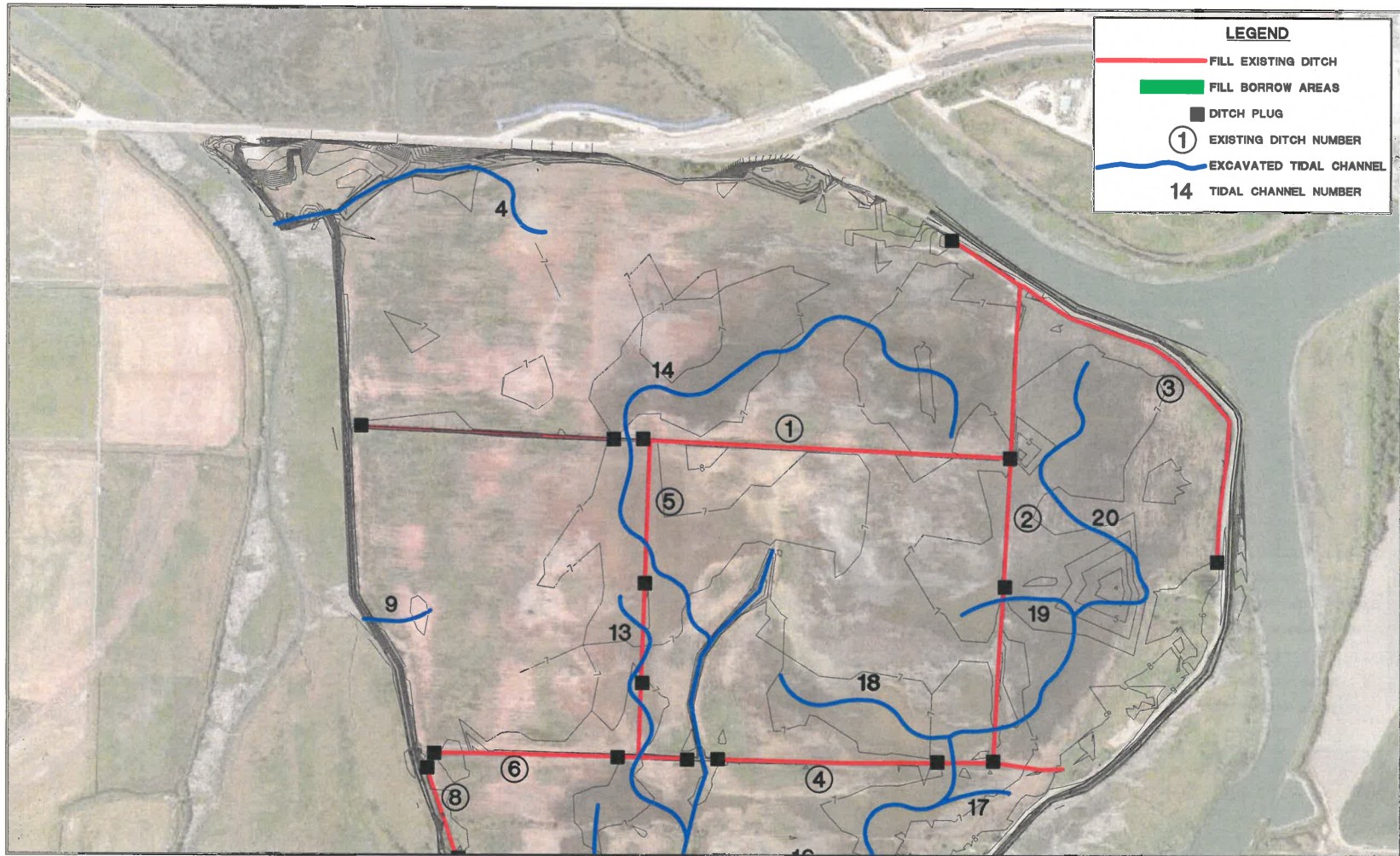
**Figure 1. Leque Island Estuary Restoration Project - Project Area**

0 200 400  
SCALE FEET



**LEGEND**

- FILL EXISTING DITCH
- FILL BORROW AREAS
- DITCH PLUG
- ① EXISTING DITCH NUMBER
- ~ EXCAVATED TIDAL CHANNEL
- 14 TIDAL CHANNEL NUMBER



SEE SHEET 7

**Unauthorized Changes & Uses**  
The engineer preparing these plans will not be responsible for, or liable for, unauthorized changes to or uses of these plans. All changes must be in writing and must be approved by the preparer of these plans.



REVISIONS			
REV. NO.	DESCRIPTION	DATE	APPROVED

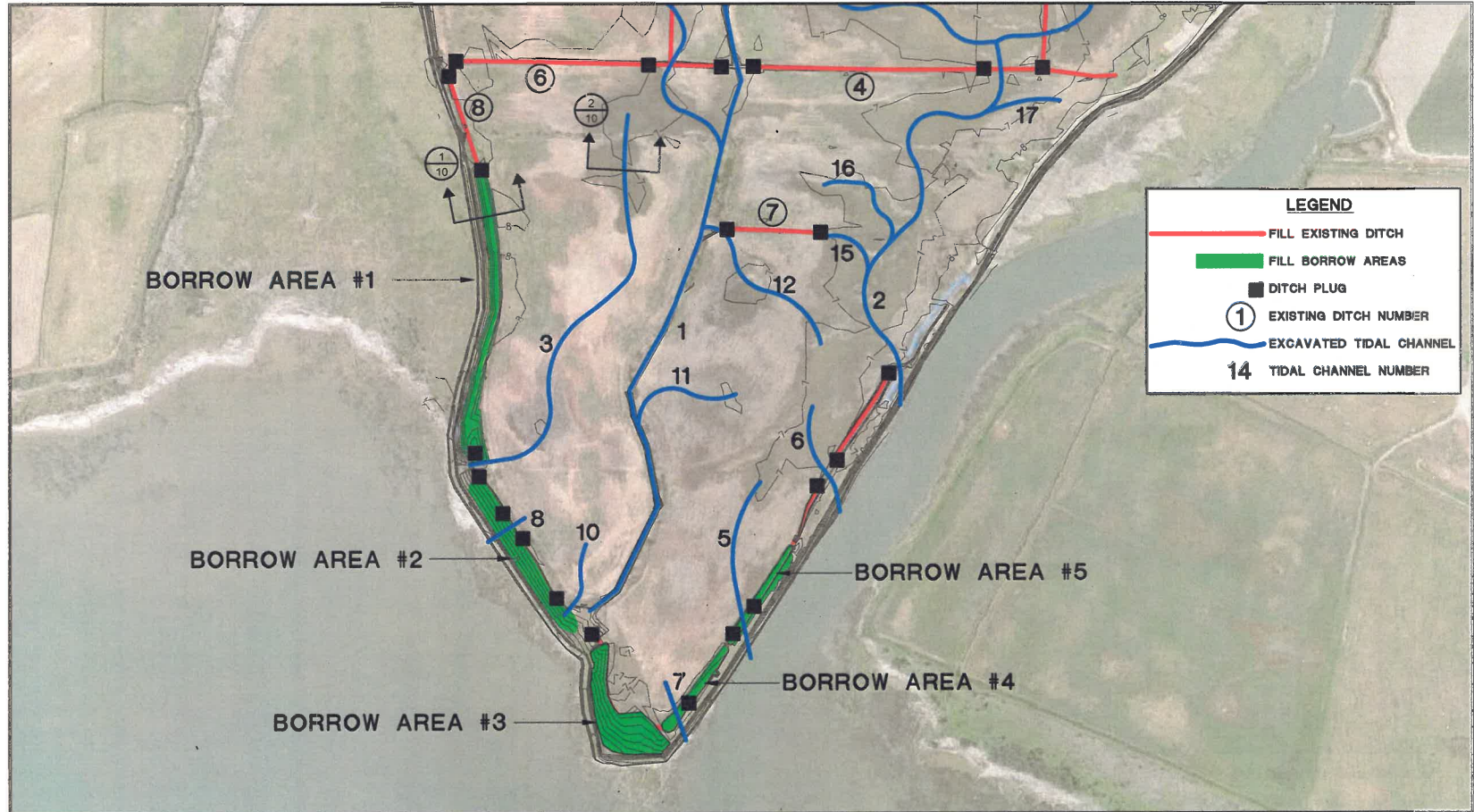


**PRELIMINARY**

PROJECT NO. US-JWA-92-4	DATE: 6/10/2016	DESIGNED BY: DMV
<b>LEQUE ISLAND ESTUARY RESTORATION PROJECT</b>		DRAWN BY: DMAC
		SURVEYED BY: JPS
		CHECKED BY:
		SHEET NO.
DITCH FILL & TIDAL CHANNEL EXCAVATION		<b>6 of 10</b>



SEE SHEET 6



**LEGEND**

- FILL EXISTING DITCH
- FILL BORROW AREAS
- DITCH PLUG
- ① EXISTING DITCH NUMBER
- EXCAVATED TIDAL CHANNEL
- 14 TIDAL CHANNEL NUMBER

**Unauthorized Changes & Uses**  
The engineer preparing these plans will not be responsible for, or liable for, unauthorized changes to or uses of these plans. All changes must be in writing and must be approved by the preparer of these plans.



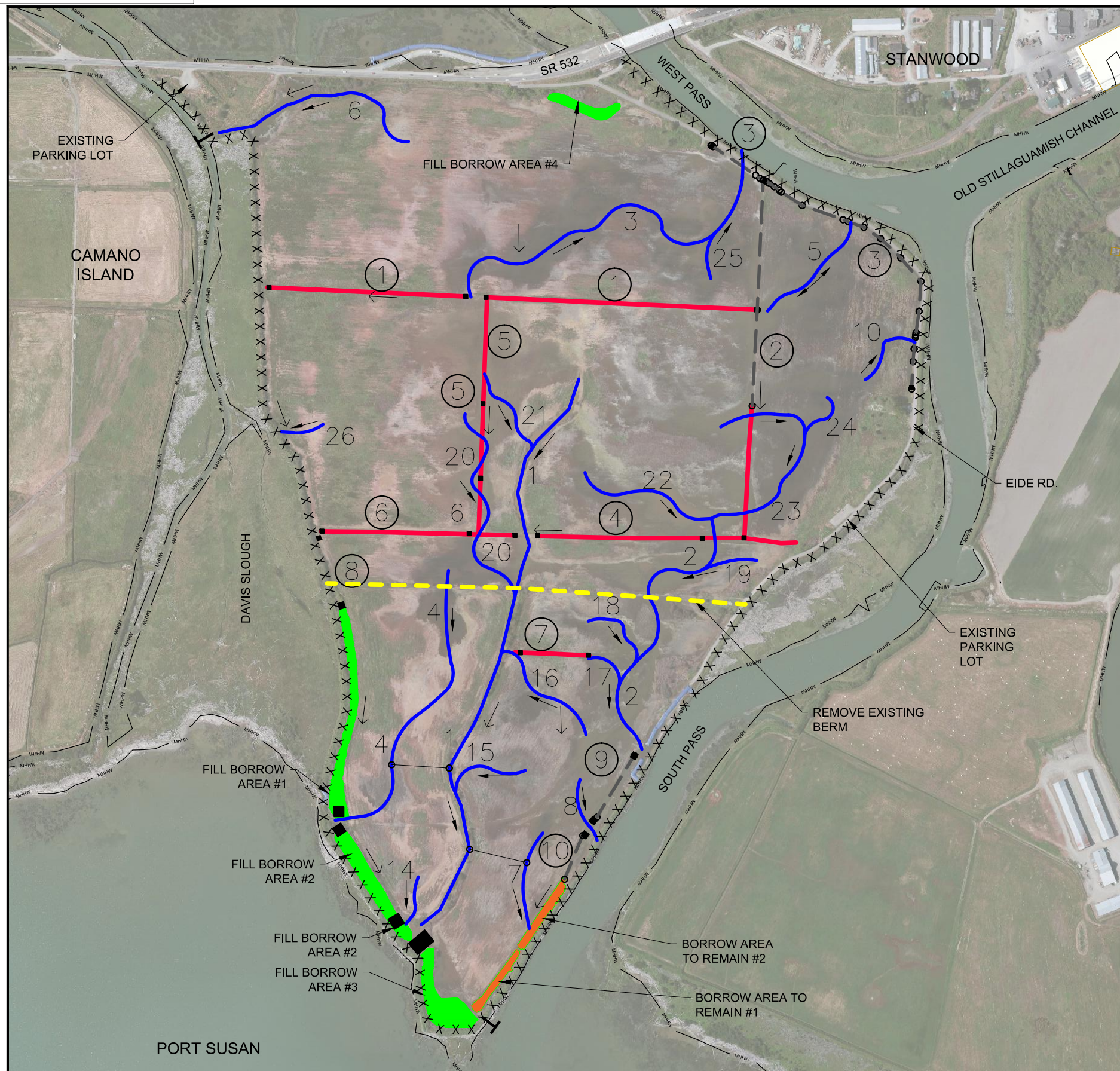
REVISIONS			
REV. NO.	DESCRIPTION	DATE	APPROVED



PROJECT NO. US-WA-62-4	DATE: 6/10/2016	DESIGNED BY: DMK
LEQUE ISLAND ESTUARY RESTORATION PROJECT		DRAWN BY: DMK
		SURVEYED BY: JPS
		CHECKED BY:
		SHEET NO. 7 of 10

**PRELIMINARY**

DITCH FILL & TIDAL CHANNEL EXCAVATION



**LEGEND**

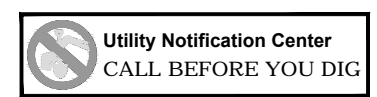
- REMOVE EXISTING BERM
- FILL EXISTING DITCH
- FILL EXISTING BORROW AREAS
- BORROW AREA TO REMAIN
- DITCH PLUG (PROPOSED)
- EXISTING DITCH NUMBER
- EXCAVATED TIDAL CHANNEL (PROPOSED)
- TIDAL CHANNEL NUMBER
- DIRECTION OF CHANNEL FLOW
- EXISTING DRAINAGE PATH
- EXISTING PERIMETER DIKE
- EXISTING TIDE GATE TO REMAIN

PROPERTY OWNER:  
WA DEPARTMENT OF FISH AND WILDLIFE



PRELIMINARY

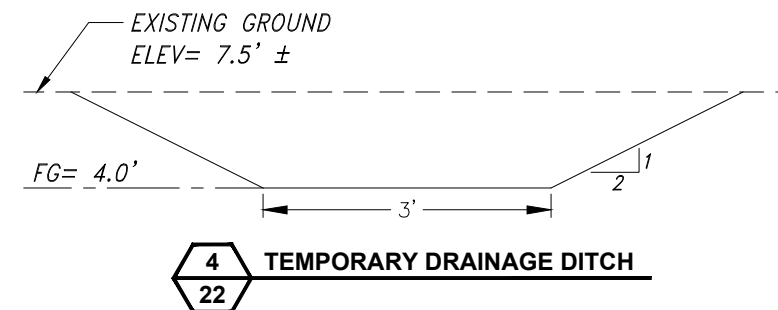
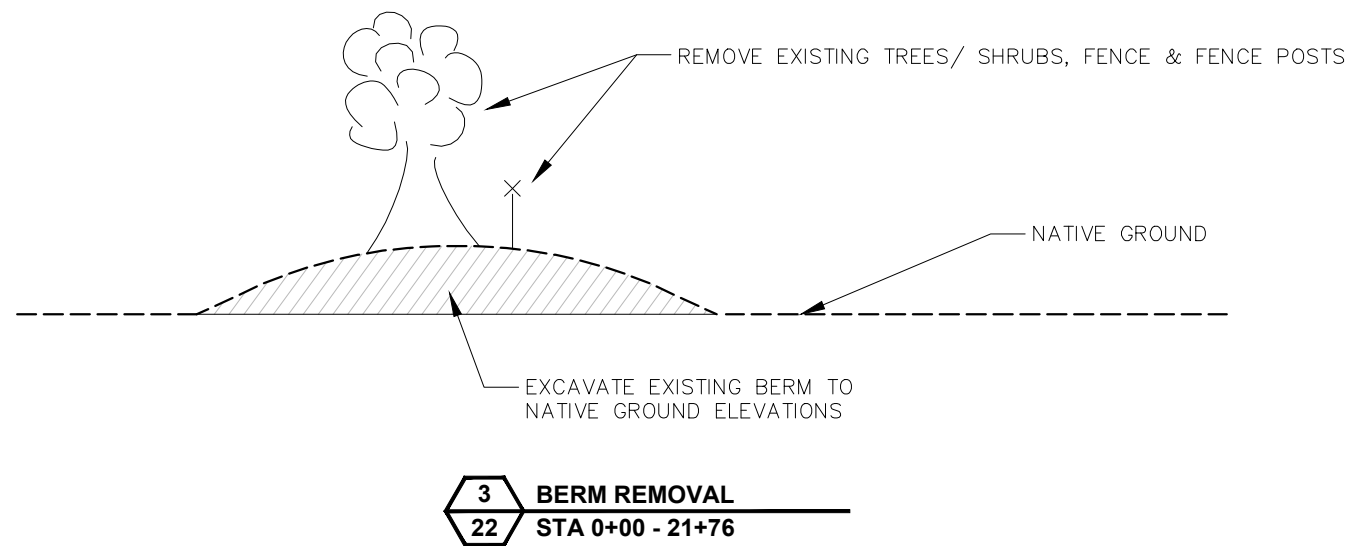
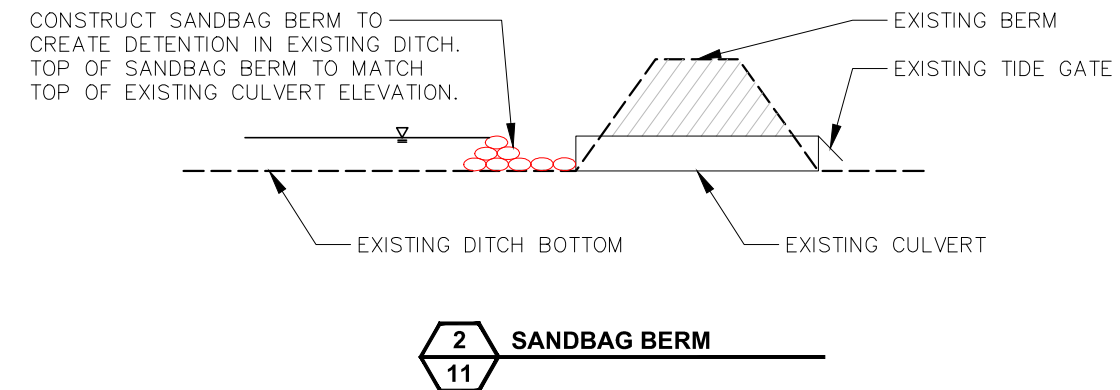
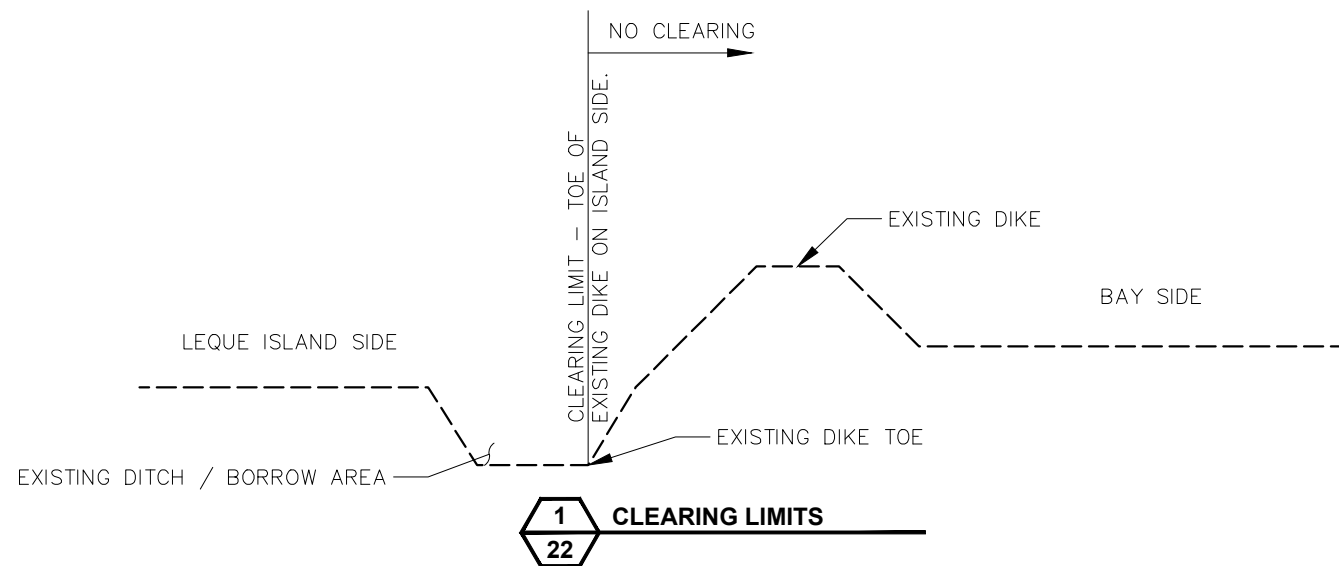
**Unauthorized Changes & Uses**  
The engineer preparing these plans will not be responsible for, or liable for, unauthorized changes to or uses of these plans. All changes must be in writing and must be approved by the preparer of these plans.



REV. NO.	DESCRIPTION	DATE	APPROVED

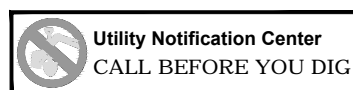


PROJECT NO. <b>US-WA-62-4</b>	DATE: <b>02/2017</b>	DESIGNED BY: SWL
<b>LEQUE ISLAND ESTUARY RESTORATION PROJECT</b>		DRAWN BY: DMC
<b>SITE PLAN</b>		SURVEYED BY: JPS
		CHECKED BY:
		SHEET NO. <b>1 of 3</b>



PRELIMINARY

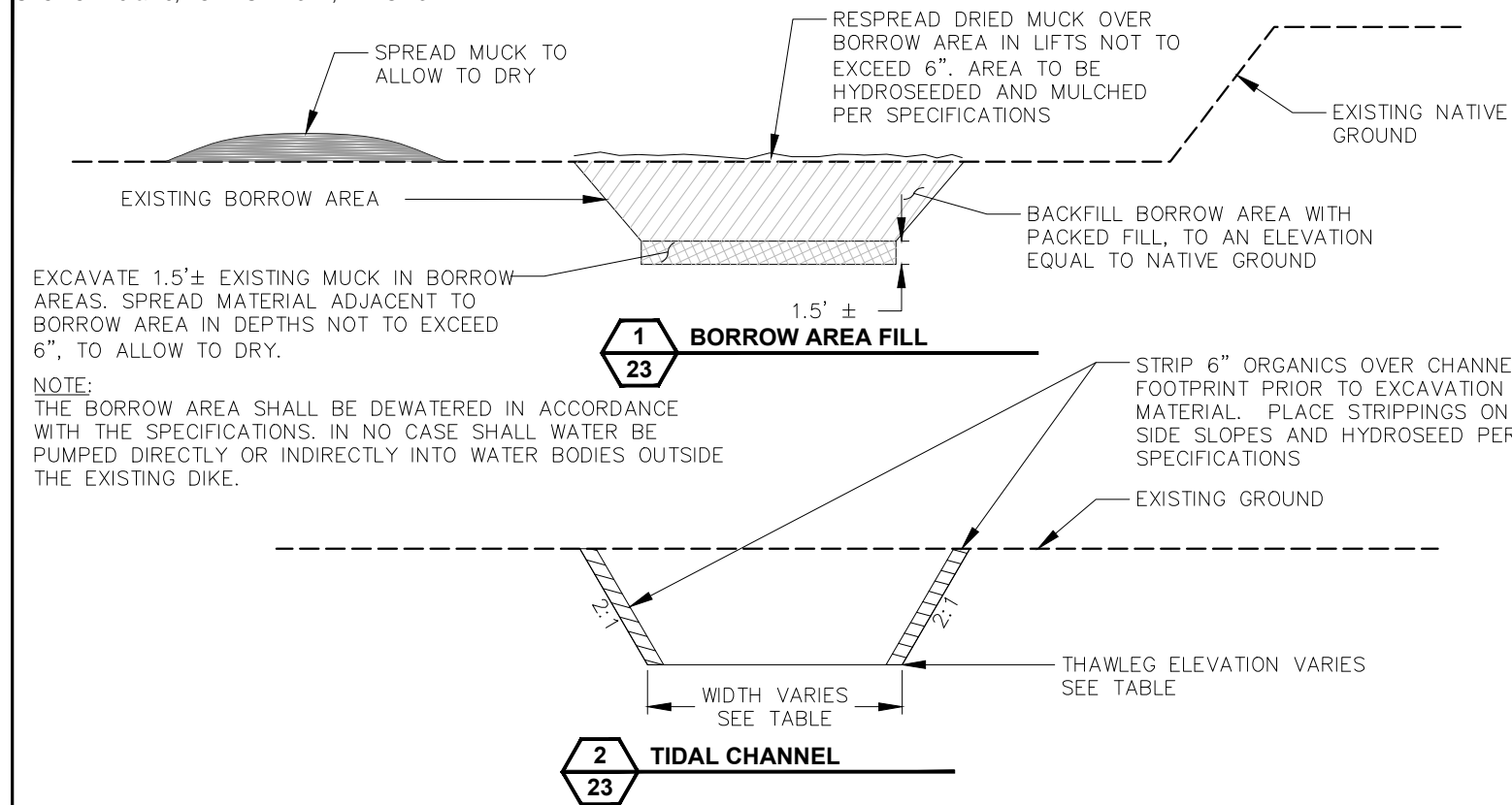
**Unauthorized Changes & Uses**  
The engineer preparing these plans will not be responsible for, or liable for, unauthorized changes to or uses of these plans. All changes must be in writing and must be approved by the preparer of these plans.



REVISIONS			
REV. NO.	DESCRIPTION	DATE	APPROVED

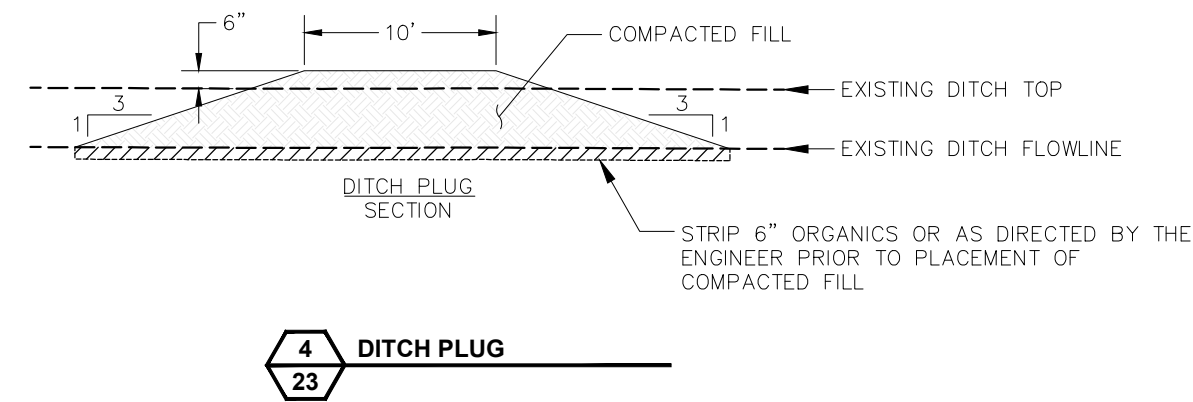
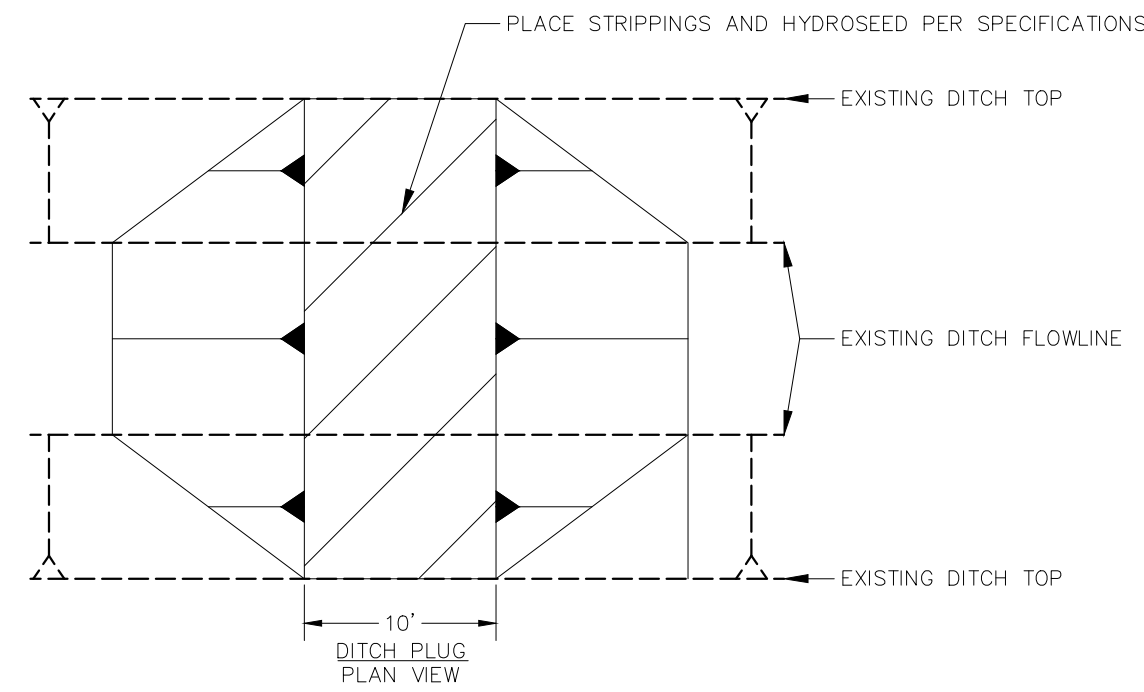
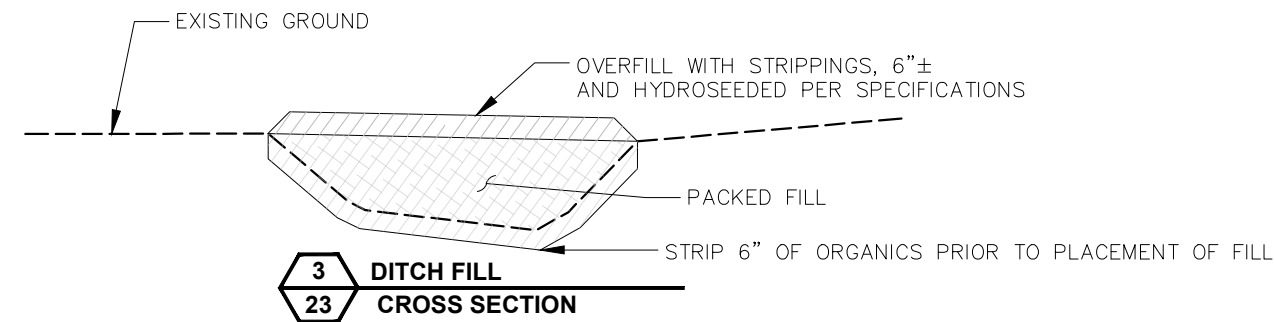


PROJECT NO. <b>US-WA-62-4</b>	DATE: <b>02/2017</b>	DESIGNED BY: SWL
<b>LEQUE ISLAND ESTUARY RESTORATION PROJECT</b>		DRAWN BY: DMC
<b>DETAIL SHEET 1</b>		SURVEYED BY: JPS
		CHECKED BY:
		SHEET NO. <b>2 of 2</b>



EXCAVATE 1.5'± EXISTING MUCK IN BORROW AREAS. SPREAD MATERIAL ADJACENT TO BORROW AREA IN DEPTHS NOT TO EXCEED 6", TO ALLOW TO DRY.

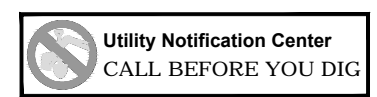
**NOTE:**  
 THE BORROW AREA SHALL BE DEWATERED IN ACCORDANCE WITH THE SPECIFICATIONS. IN NO CASE SHALL WATER BE PUMPED DIRECTLY OR INDIRECTLY INTO WATER BODIES OUTSIDE THE EXISTING DIKE.



**TIDAL CHANNEL EXCAVATION TABLE**

Channel #	Predicted Thalweg Elevation at Outlet(ft, NAVD88)	Predicted Thalweg Elevation at 1/4 point (ft, NAVD88)	Predicted Thalweg Elevation at 1/2 point (ft, NAVD88)	Predicted Thalweg Elevation at 3/4 point (ft, NAVD88)	Predicted Thalweg Elev at End (ft, NAVD88)	Predicted Thalweg Width at Outlet (ft)	Predicted Thalweg Width at 1/4 point (ft)	Predicted Thalweg Width at 1/2 point (ft)	Predicted Thalweg Width at 3/4 point (ft)	Predicted Thalweg Width at End (ft)	Total Channel Length (ft)
1	2.32	2.83	3.84	4.24	4.90	60.0	40.0	30.0	20.0	10.0	3350
2	2.54	3.06	4.01	4.42	5.07	50.0	35.0	27.0	18.0	10.0	2240
3	3.05	3.61	4.39	4.82	5.48	24.2	13.9	12.1	8.6	5.2	2100
4	3.05	3.61	4.39	4.82	5.48	30.0	20.0	15.0	10.0	8.0	1690
5	3.67	4.27	4.85	5.32	5.97	13.9	9.4	8.4	6.2	4.1	670
6	3.06	3.61	4.39	4.83	5.48	24.1	13.9	12.0	8.6	5.2	1320
7	3.67	4.27	4.85	5.32	5.97	13.9	9.4	8.4	6.2	4.1	570
8	3.97	4.58	5.07	5.55	6.21	10.7	7.8	7.1	5.3	3.6	470
10	3.97	4.58	5.07	5.55	6.21	10.7	7.8	7.1	5.3	3.6	650
14	3.92	4.54	5.04	5.51	6.17	11.2	8.1	7.2	5.5	3.7	280
15	3.67	4.27	4.85	5.32	5.97	13.9	9.4	8.4	6.2	4.1	430
16	3.67	4.27	4.85	5.32	5.97	13.9	9.4	8.4	6.2	4.1	560
17	4.17	4.80	5.22	5.71	6.37	9.0	6.9	6.3	4.8	3.3	190
18	4.17	4.80	5.22	5.71	6.37	9.0	6.9	6.3	4.8	3.3	370
19	4.17	4.80	5.22	5.71	6.37	9.0	6.9	6.3	4.8	3.3	350
20	3.15	3.71	4.46	4.90	5.56	22.2	13.1	11.4	8.2	5.0	1180
21	4.17	4.80	5.22	5.71	6.37	9.0	6.9	6.3	4.8	3.3	400
22	3.67	4.27	4.85	5.32	5.97	13.9	9.4	8.4	6.2	4.1	700
23	3.67	4.27	4.85	5.32	5.97	13.9	9.4	8.4	6.2	4.1	310
24	4.17	4.80	5.22	5.71	6.37	22.2	13.1	11.4	8.2	5.0	430
25	3.67	4.27	4.85	5.32	5.97	13.9	9.4	8.4	6.2	4.1	220
26	3.15	3.71	4.46	4.90	5.56	22.2	13.1	11.4	8.2	5.0	310

**Unauthorized Changes & Uses**  
 The engineer preparing these plans will not be responsible for, or liable for, unauthorized changes to or uses of these plans. All changes must be in writing and must be approved by the preparer of these plans.



REV. NO.	DESCRIPTION	DATE	APPROVED



PROJECT NO. <b>US-WA-62-4</b>	DATE: <b>02/2017</b>	DESIGNED BY: SWL
LEQUE ISLAND ESTUARY RESTORATION PROJECT		DRAWN BY: DMC
		SURVEYED BY: JPS
DETAIL SHEET 2		CHECKED BY: JPS
		SHEET NO. 3 of 3

PRELIMINARY