

# Oak Creek Habitat Restoration Project Site Plan

## Attachment to SEPA Checklist

### List of Figures

Figure 1. Project area overview. Legal location, stream channels and decommissioned roads are shown.

Figure 2A. Overview of proposed earth work in section 3.

Figures 2B-G. Cross-sections in section 3.

Figures 2H-L. Cross-sections in section 3.

Figure 3A. Area of work and earth moving in section 3. Contour interval is 5 feet.

Figures 3B-D. Cross sections in section 3.

Figure 4. Overview of proposed earth work in sections 8 and 9.

Figure 5. Area of work and earth moving in section 9. Contour interval is 5 feet.

Figure 6. Map of work in sections 3 and 10.

Figure 7. Example wood placement.

Figure 8. Oak Creek Habitat Restoration Project: Project Area.

Figure 9. Oak Creek Habitat Restoration Project: Sections 2, 3, and 10.

Figure 10. Oak Creek Habitat Restoration Project: sections 8 and 9.

Figure 11 A and B. Examples of pre- and post-yarding down wood thresholds.

### List of Tables

Table 1. Tree cutting thresholds, pre- and post-treatment density requirements, number of trees cut, and yarding method.

Figure 1. Project area overview. Township and Range Sections, stream channels, and existing dirt roads are shown.

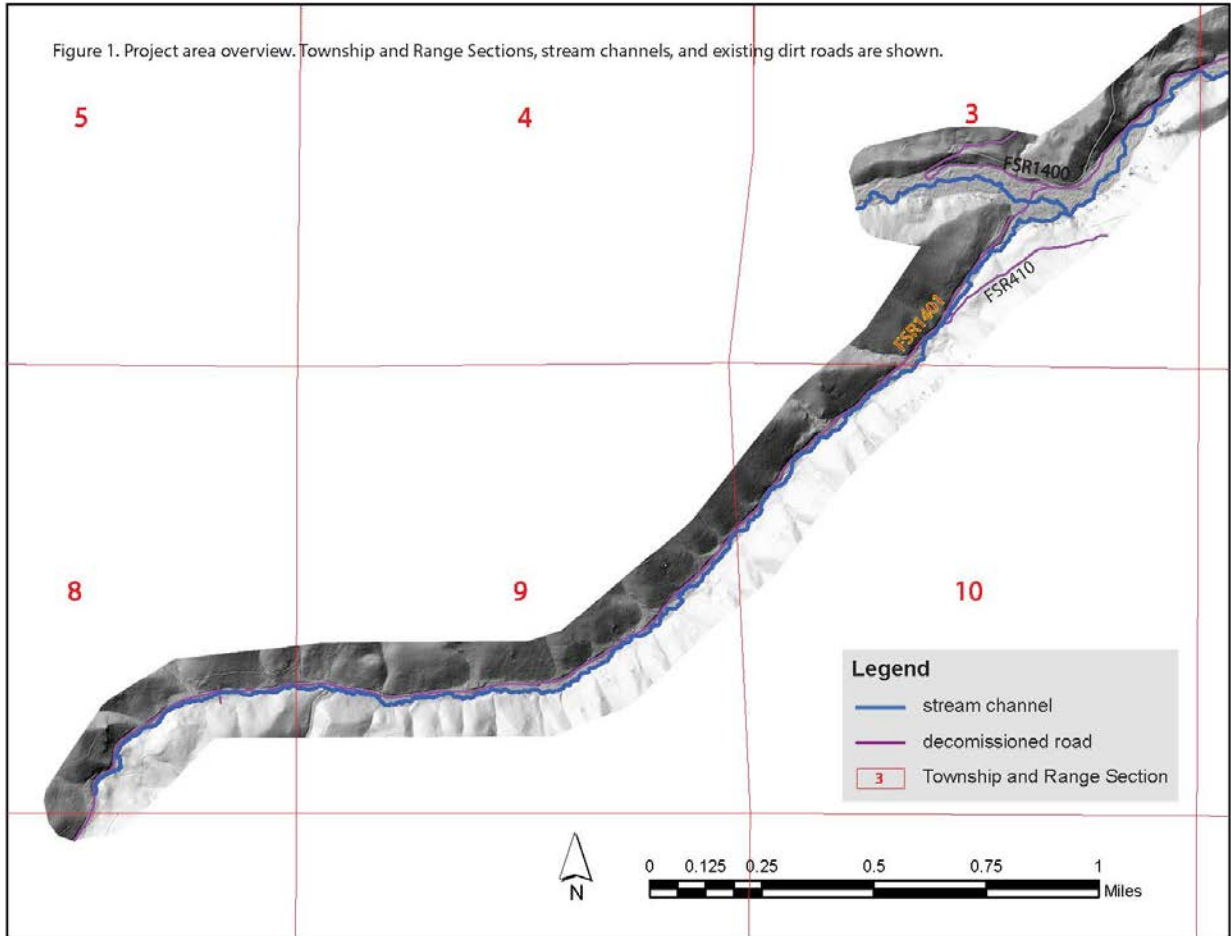




Figure 2A. Overview of proposed earth work in Section 3.

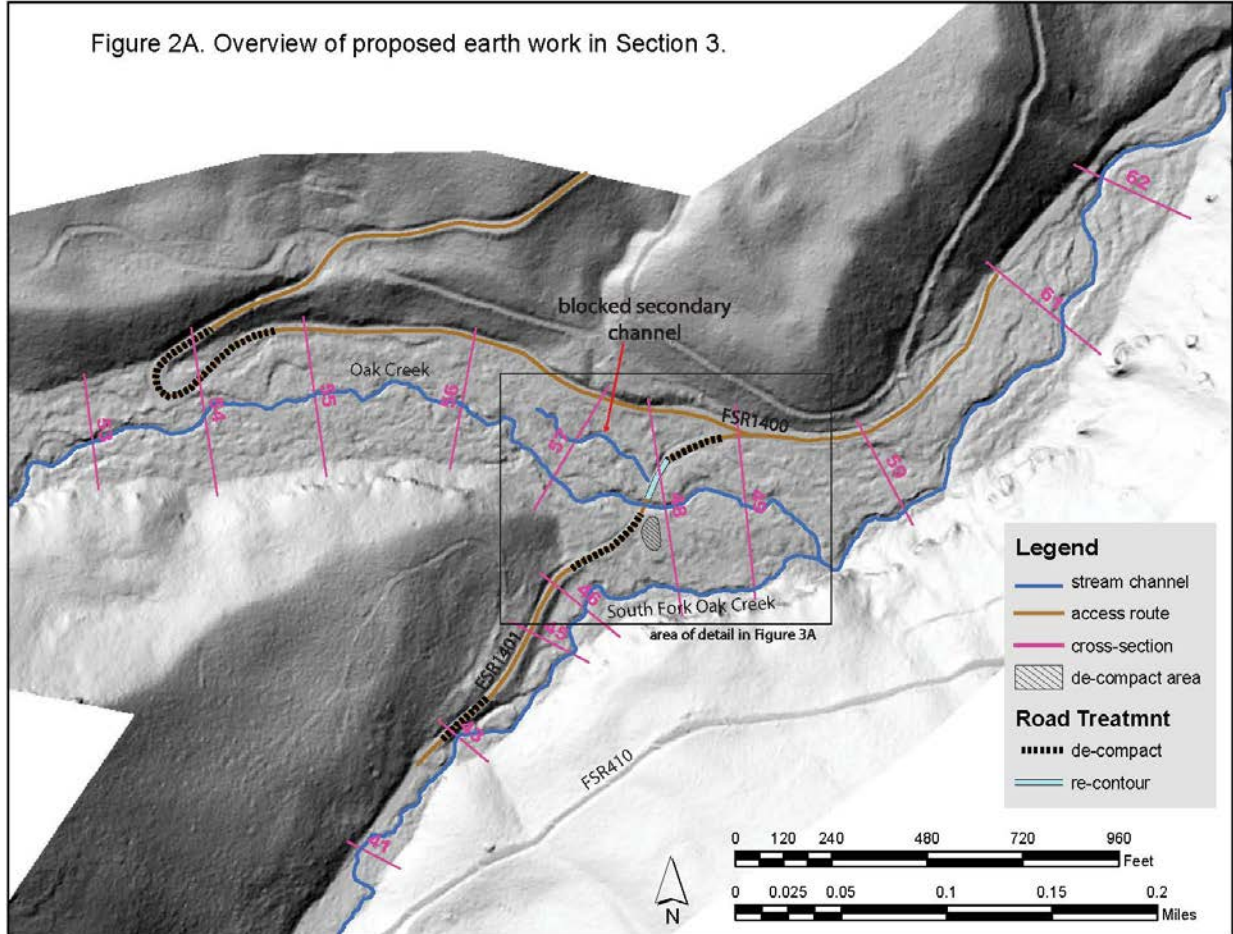


Figure 2B-G. Cross-sections in Section 3. All units are in feet.

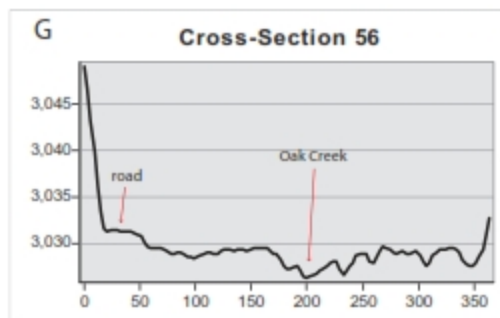
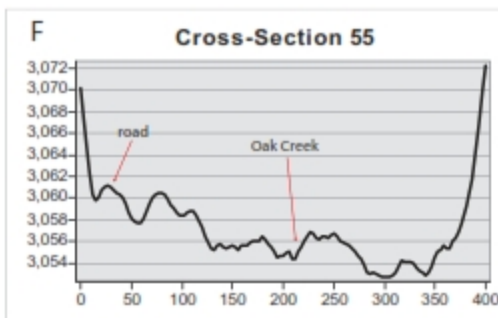
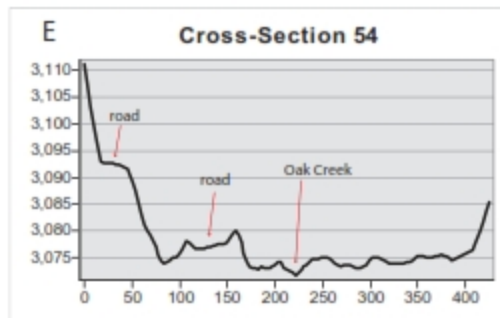
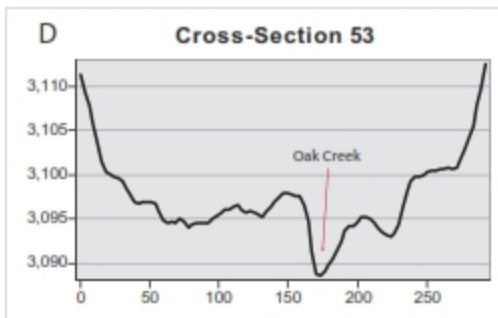
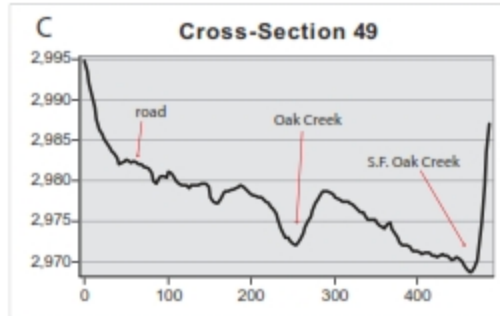
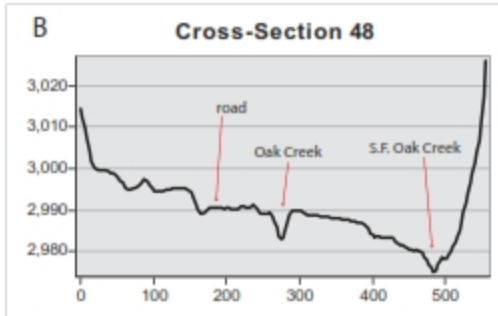


Figure 2H-L. Cross-sections in Section 3. All units are in feet.

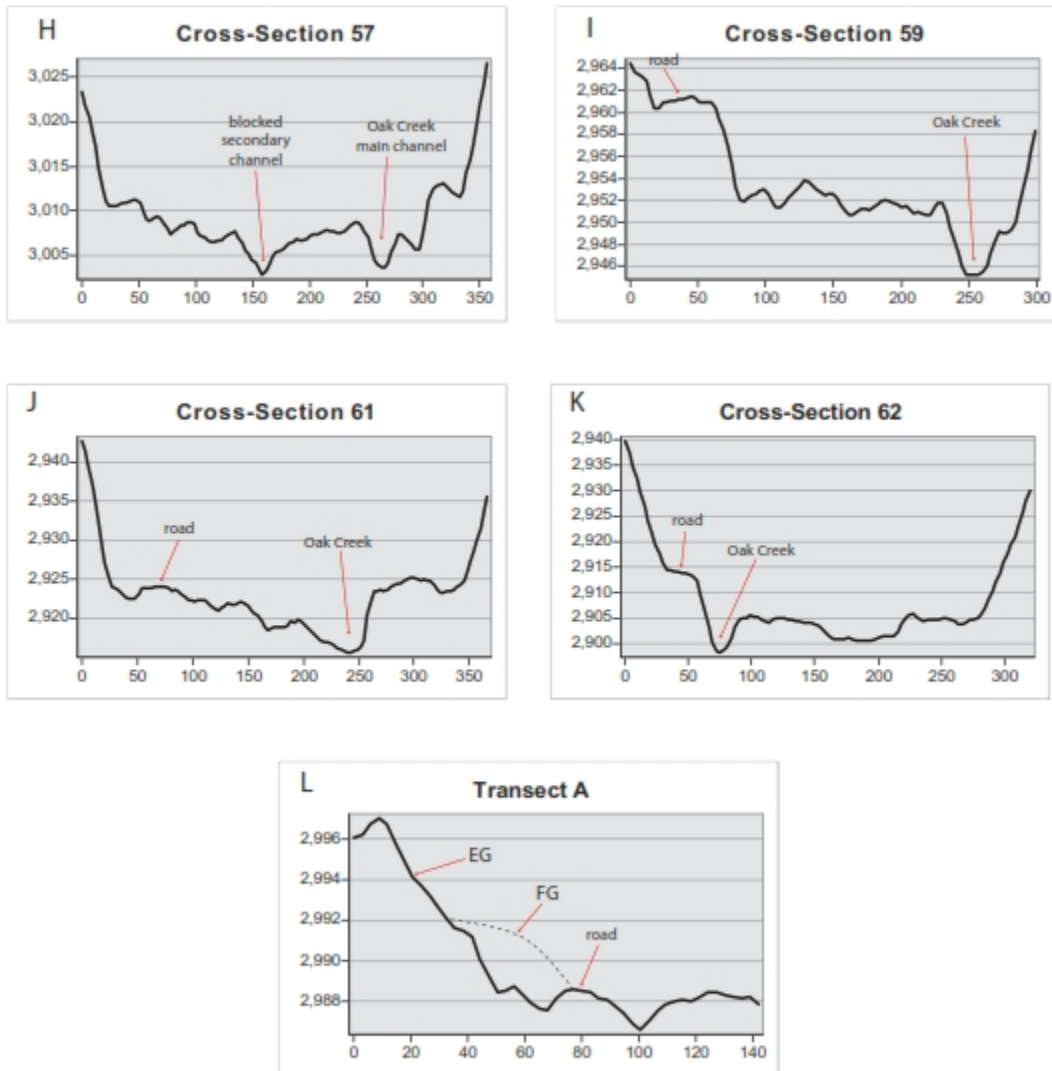
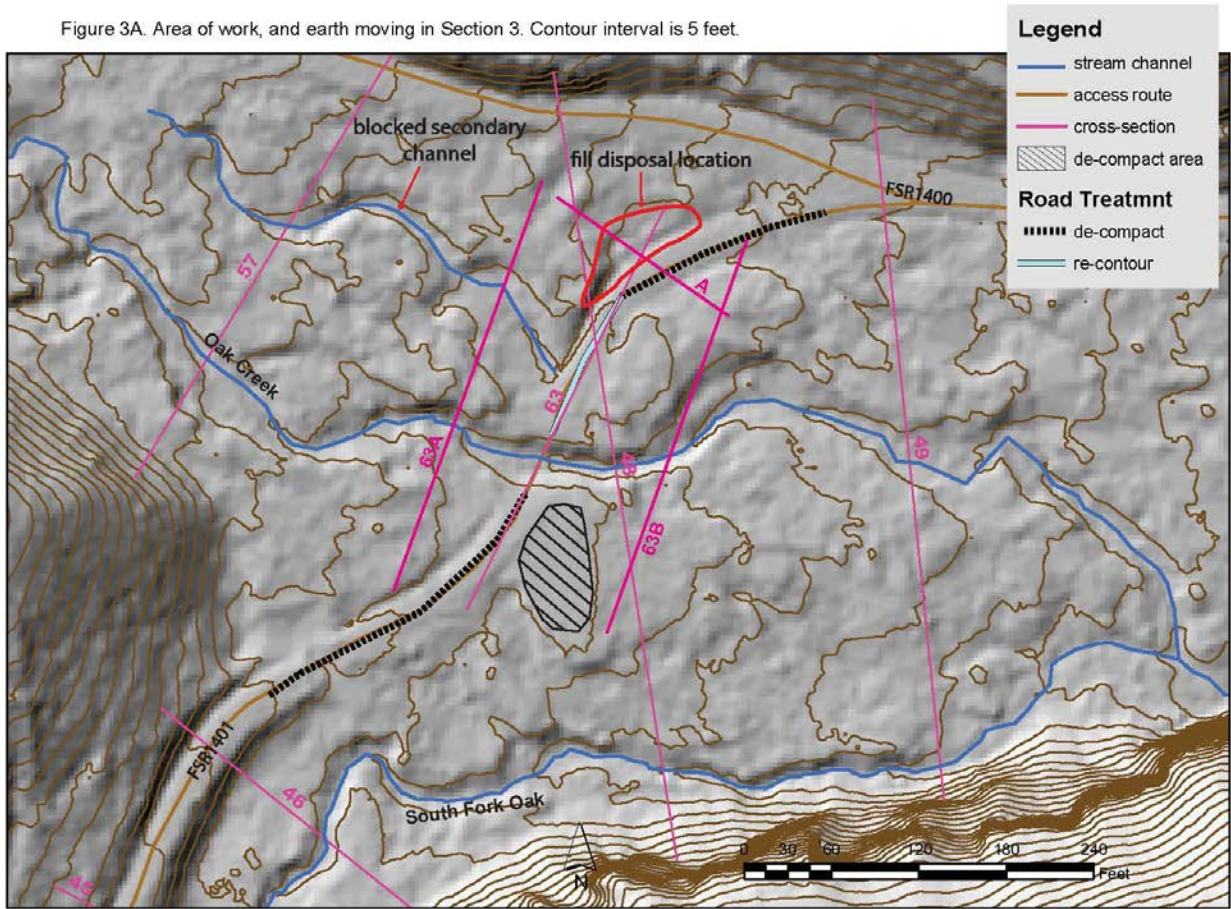


Figure 3A. Area of work, and earth moving in Section 3. Contour interval is 5 feet.





Figures 3B-D. Typical for work in Section 3. All units are in feet.

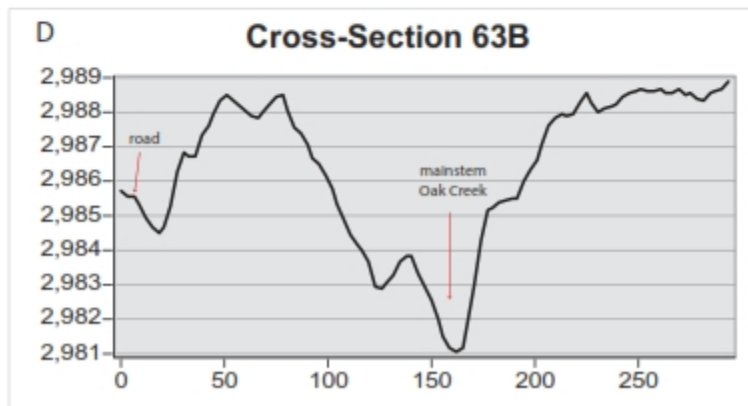
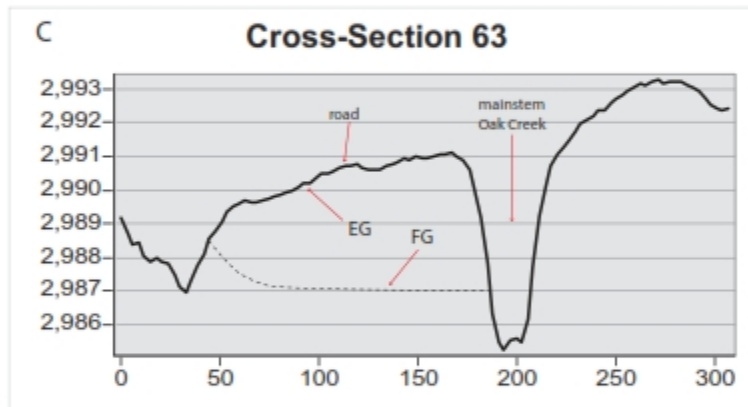
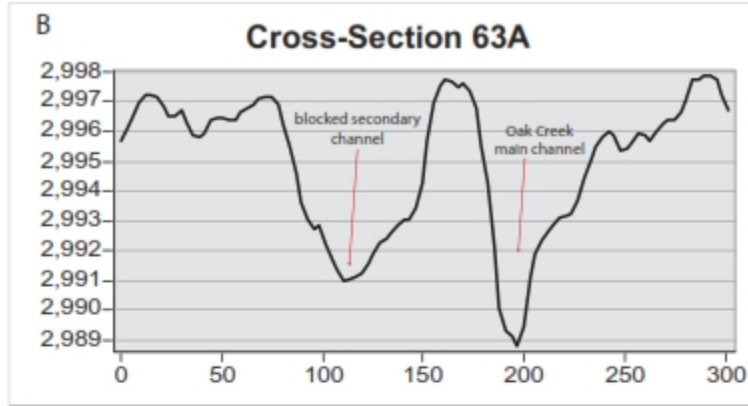


Figure 4. Overview of proposed earth work in Sections 8 and 9.

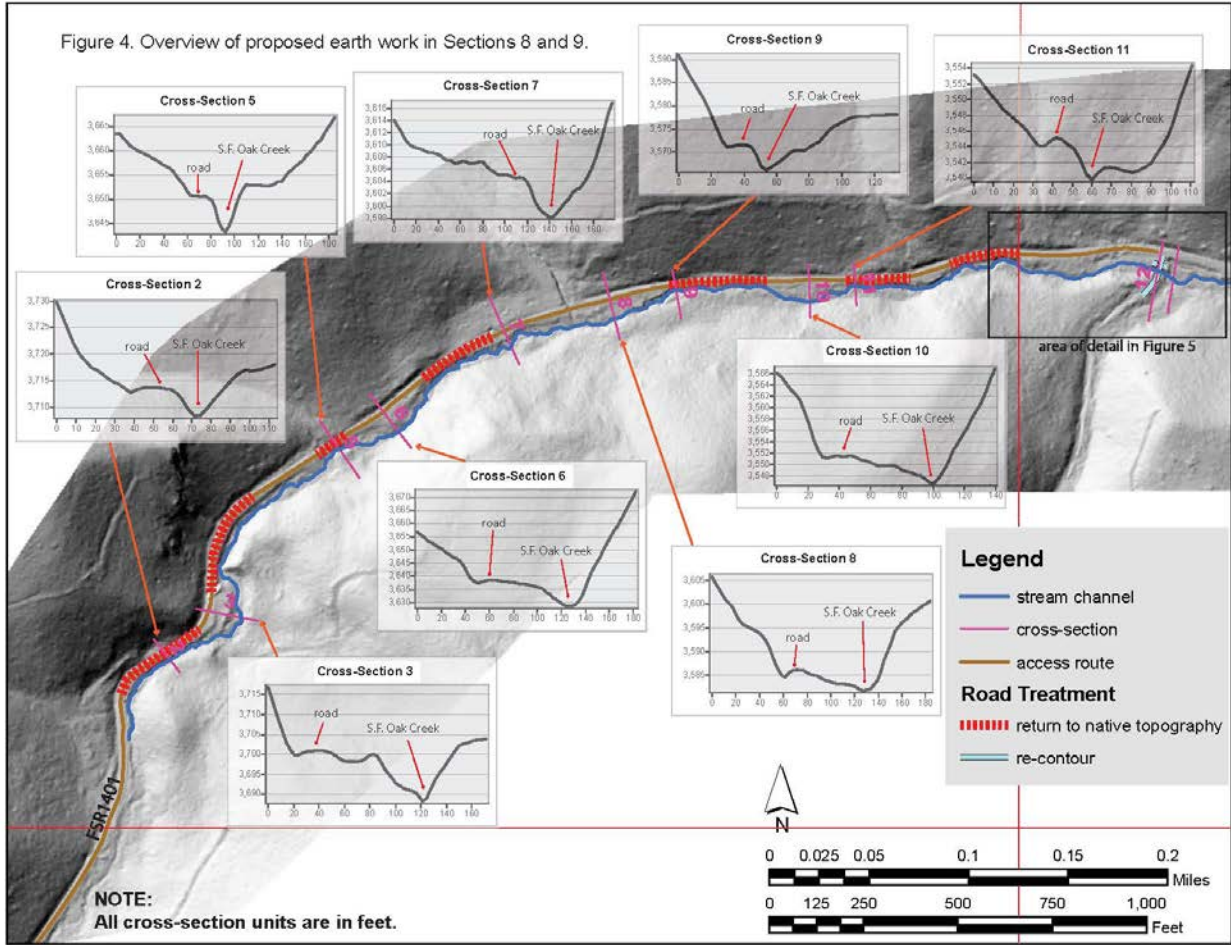


Figure 5. Area of work, and earth moving in Section 9. Contour interval is 5 feet.

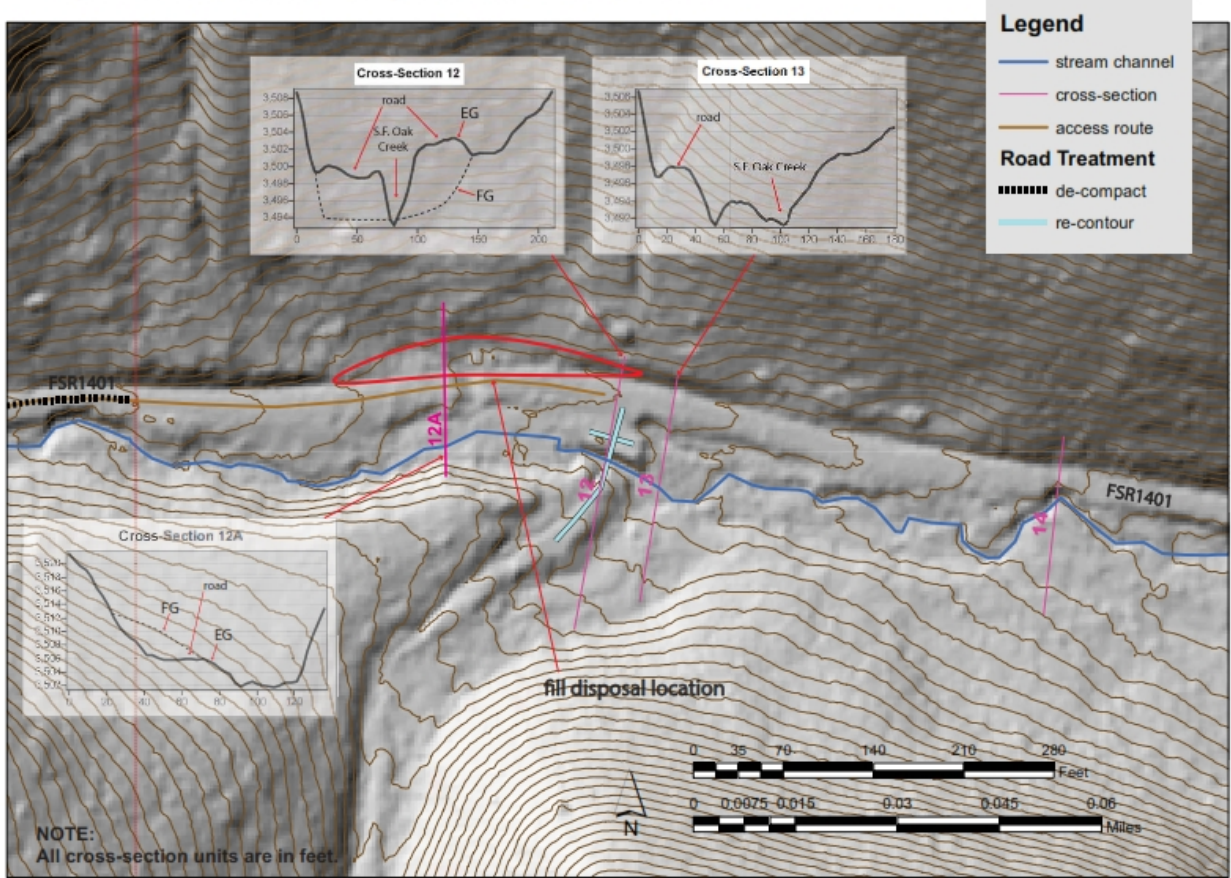




Figure 6. map of work in Sections 3 and 10.

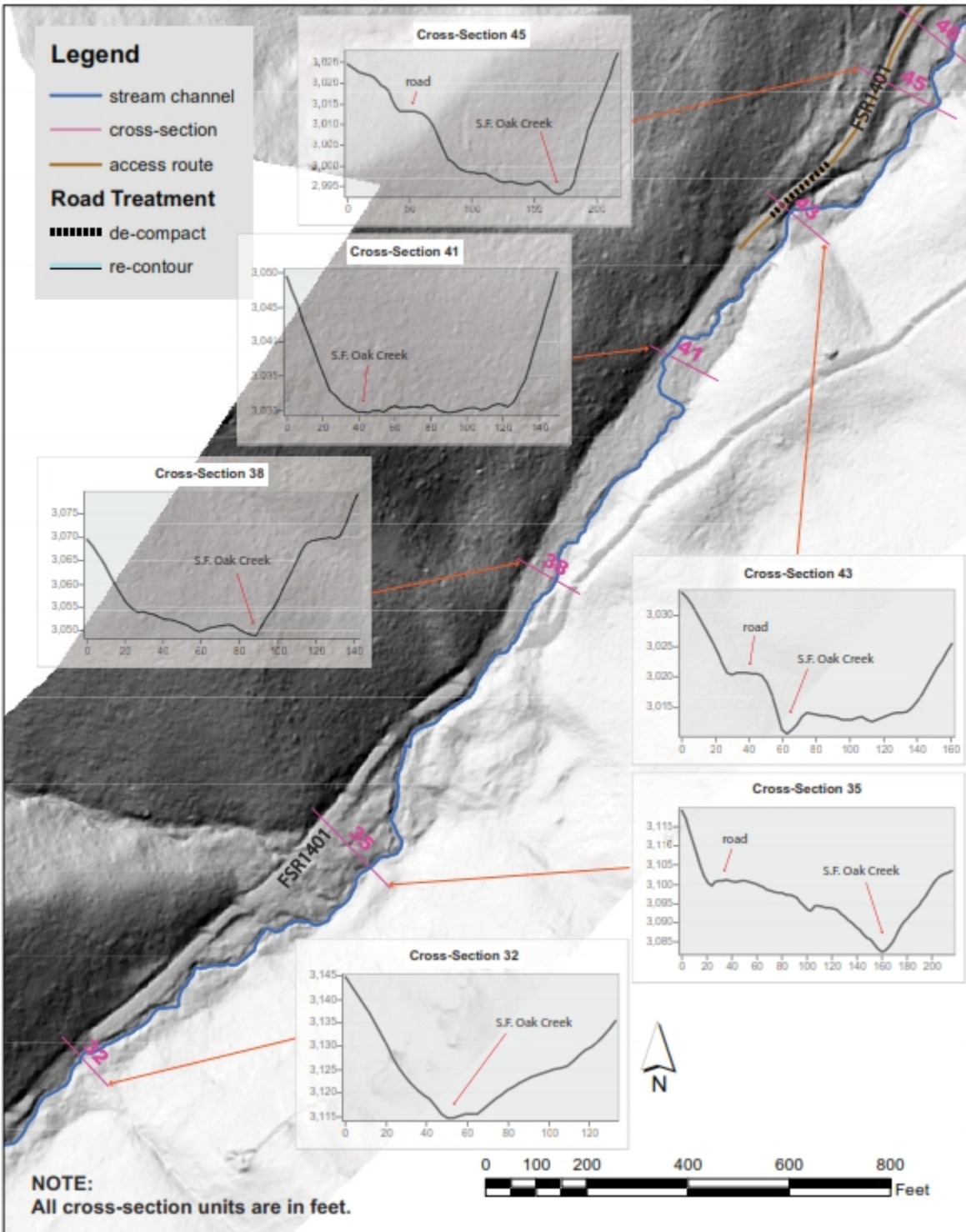
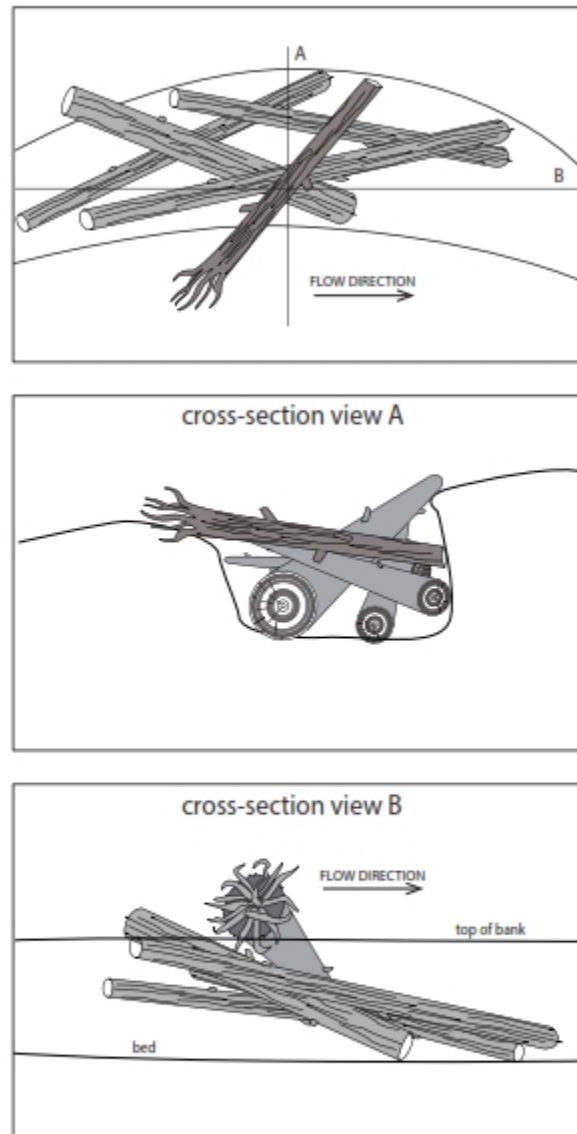


Figure 7. Example wood placement.

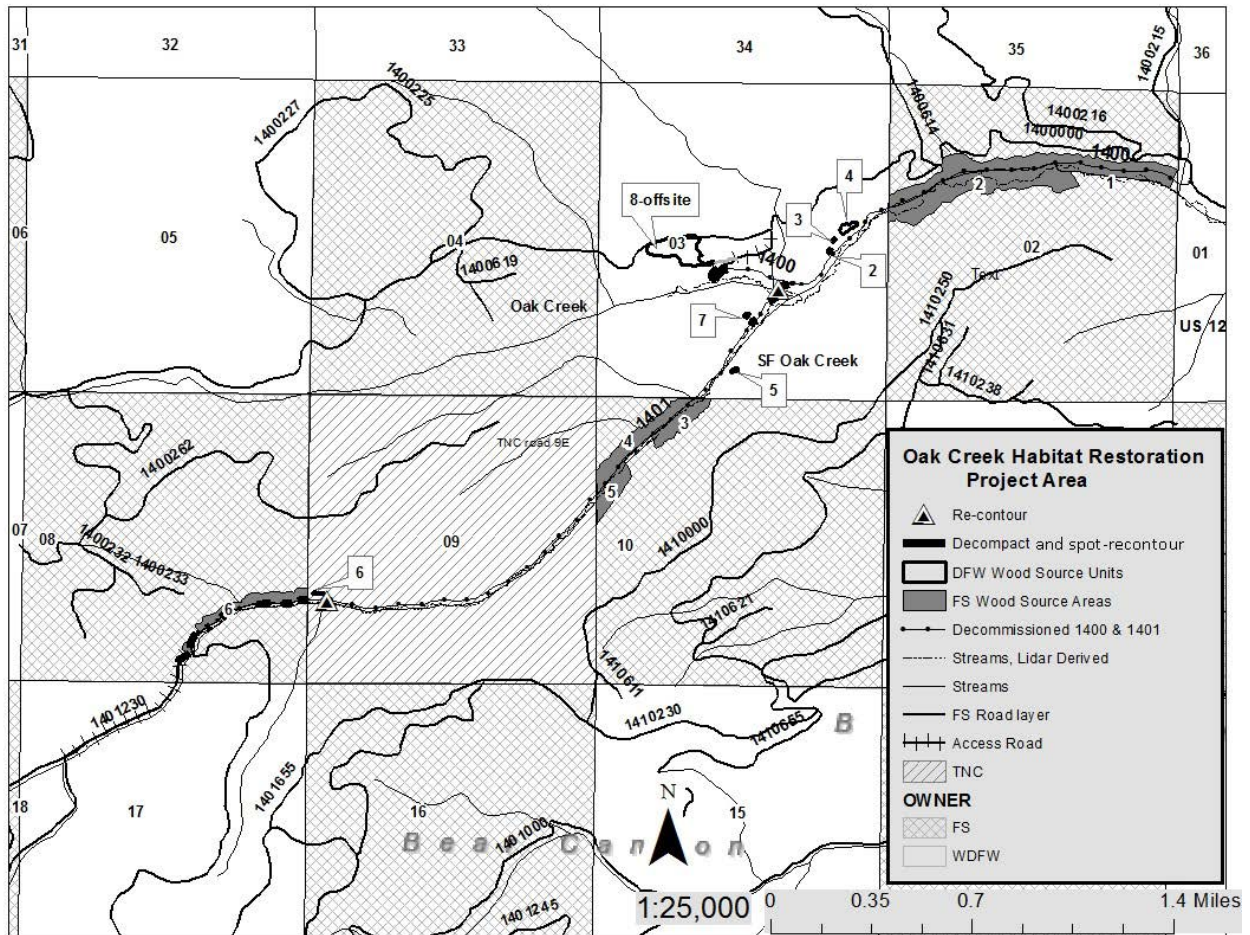


Wood placements will follow the guidelines for large wood replenishment described in the Washington Department of Fish and Wildlife's Stream Habitat Restoration Guidelines (<http://wdfw.wa.gov/publications/01374/wdfw01374.pdf>)

**Additional Notes:**

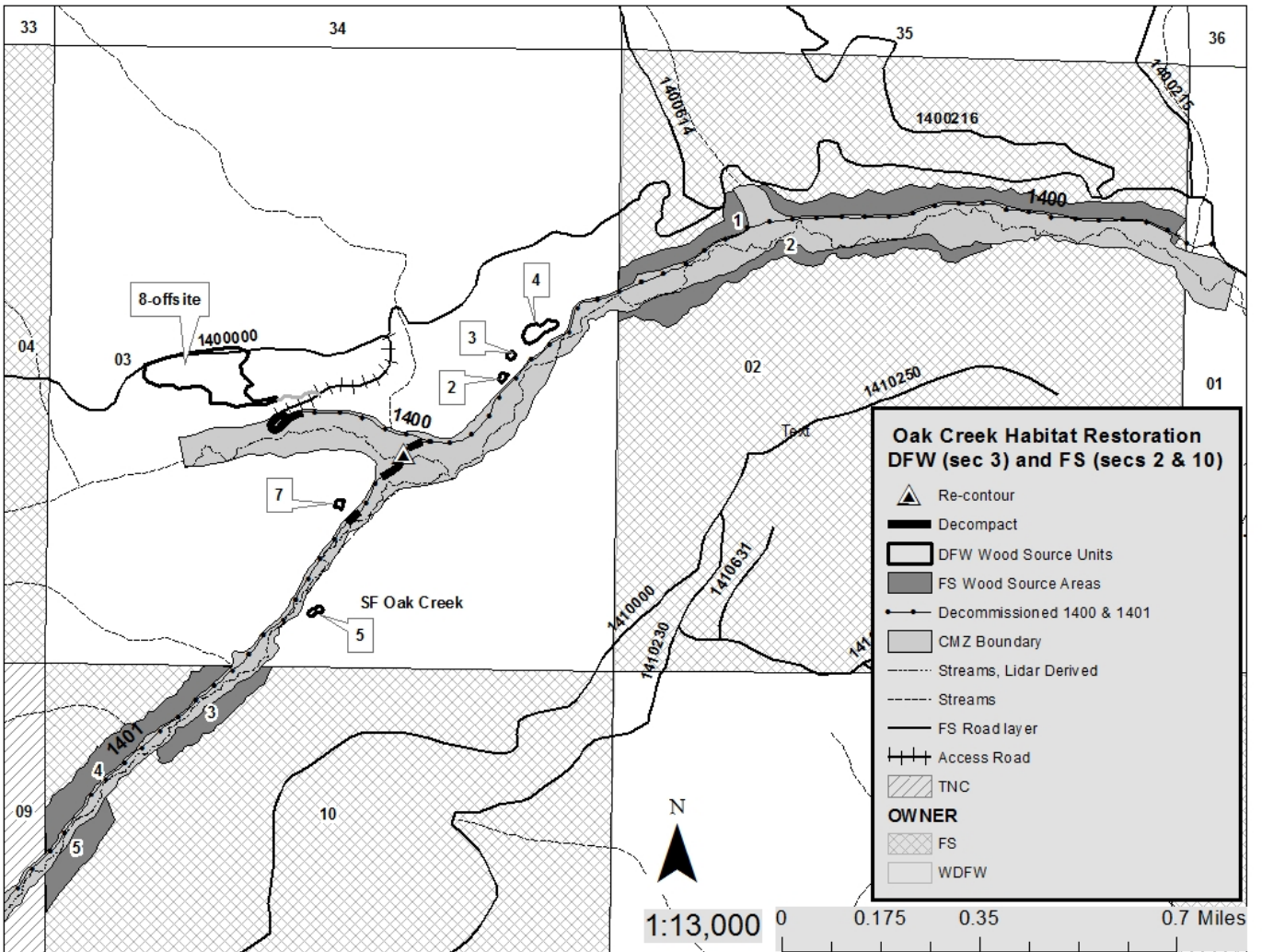
Use untrimmed logs whenever possible. Logs will be placed to take advantage of local setting (tight meander bends, other logs, rocks, live vegetation) to lock them in place.

**Figure 8. Oak Creek Habitat Restoration Project: Project Area.**

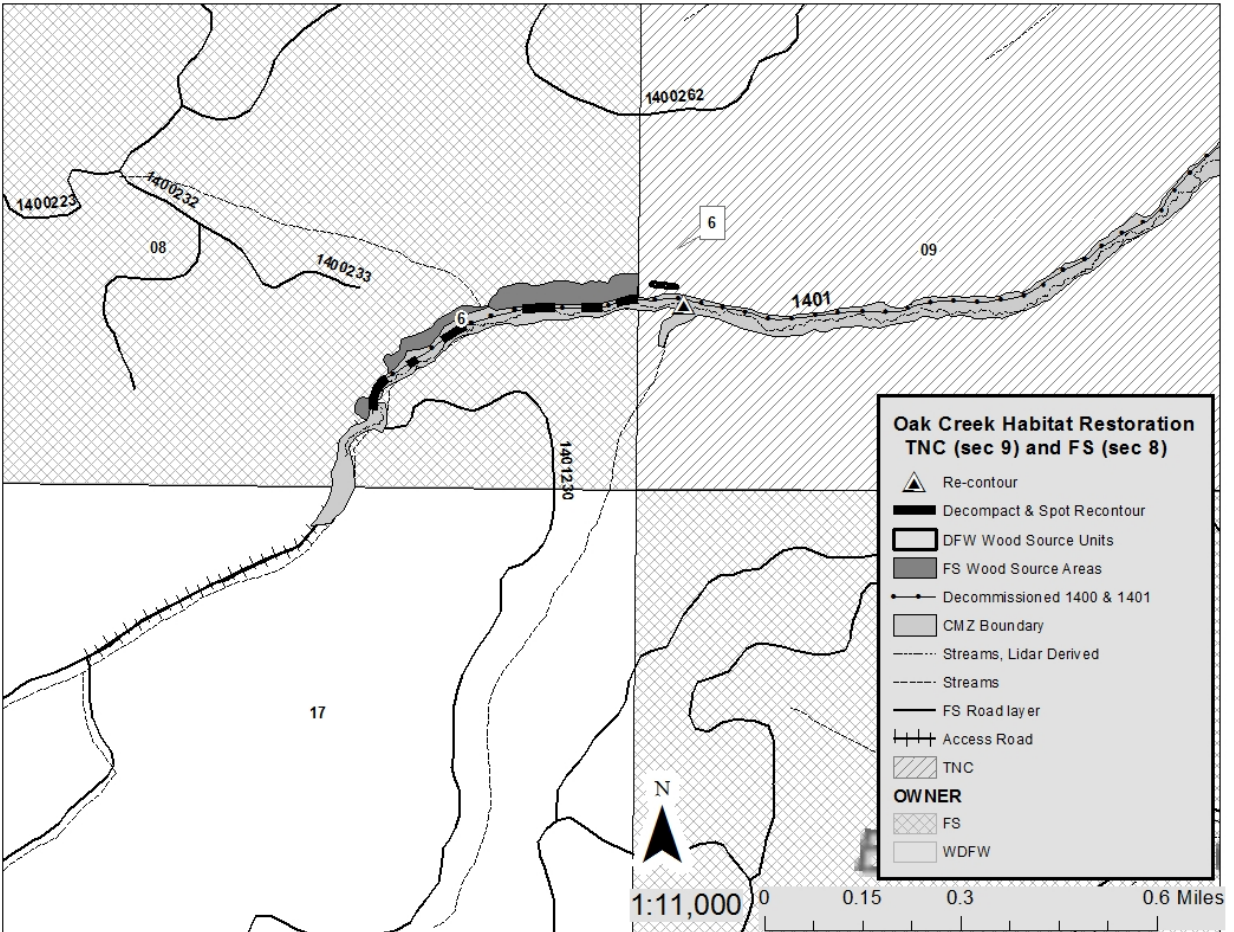




**Figure 9. Oak Creek Habitat Restoration Project: sections 2, 3, and 10.**



**Figure 10. Oak Creek Habitat Restoration Project: sections 8 and 9.**



**Table 1. Tree cutting thresholds, pre- and post-treatment density requirements, number of trees cut, and yarding method.**

Owner	Section	*Pre-treat min BA,ft2	*Post-treat min BA,ft2	Leave tree requirements	Number of trees to be cut. FS numbers are maximums based on an average of 8.5/site.	Yarding and wood placement method
WDFW	3	Units 2,3,4: 130 Units 5,7: 110	Units 2,3,4: 90 Units 5,7: 70	Retain at least 50 TPA to include the 21 largest per acre (or for FS land, equivalently 30 ft of BA), plus 30 > 10".	209 (100 from off-site location and 109 from stream adjacent forest)	Excavator and Grip hoist winch
TNC	9	Unit 6: 110	Unit 6: 70		12	Excavator
FS	8	110	70		For Section 8 69 on 8 sites	Excavator
FS	10	130	90		For Section 10 77 on 9 sites	Grip hoist winch
FS	2	110	70		For Section 2 154 on 18 sites	

\*greater than 6 inches dbh.



Figures 11 A and B. Examples of pre- and post-yarding down wood thresholds.

**Figure 11A. Example of abundant down wood: 35 tons/acre over 9 inches diameter.**



**Figure 11B. Example of lower post-treatment threshold: 15 tons/acre over 9 inches diameter.**

